



SIMCOE VILLAGE

---

# SIMCOE MEADOWS

SUPPORTIVE HOUSING

5988 Line 8  
Beeton, Ontario  
(905) 729-2267

SIMCOE  
**SIMCOE VILLAGE**

Beeton  Ontario

[SIMCOE.CA/SIMCOEVILLAGEREDEVELOPMENT](https://simcoe.ca/simcoevillageredevelopment)





# SIMCOE MEADOWS

Supportive Housing (60+)

Simcoe Meadows will feature supportive housing apartments that ensure clients have access to suitable homes while maintaining affordability and promoting independence. The Meadows will provide accommodation and support services for individuals 60+ who require supervision or assistance with the tasks of daily living due to decreased physical and/or mental capabilities.

Support services will be provided on an as-needed basis to enhance the ability of those in the apartments to age-in-place while maintaining independent lifestyles.

Clients can enjoy convenient access to a multitude of amenities at Bee's Landing Village Centre and outdoor amenities such as walking trails, shuffleboard, golf greens, and pickleball.

***32 Supportive Housing apartments and 2 guest suites located on levels 1 through 3 of this six-storey building spanning over 85,000 square feet.***



## Apartment Features

- Beautifully designed open concept 1 and 2-bedroom apartments
- Full kitchen with island including refrigerator, stove/oven, microwave, dishwasher rough-in
- Window coverings
- Individual climate controls
- Sprinkler system and smoke detectors
- Pre-wired for telephone, cable, and internet
- In-suite storage closet/pantry
- Ensuite washroom with walk through tub insert for universal use as a tub and/or shower

## Support Services

- Secure building with fob access and automatic doors
- Support staff to provide support services as required (service may include well-being monitoring, personal care, light housekeeping, assisted meal preparation, medication cueing, and local shopping trips)\*
- Emergency response system in each apartment
- 3 nutritious dinner meals each week served in the Meadows dining room. Additional dinners can be purchased through a la carte services
- One annual clean and preventative maintenance checks of the apartment
- Organized social and recreation programs
- Scheduled group outings
- One designated parking space per apartment (if tenant owns and operates a vehicle)

***\*It's important to note that 24-hour care is not available nor are support staff available to drop in at any time, services will be prescheduled.***

## Amenities

- Access to the Bees Landing Village Centre
  - » The Neighbourhood Hive Dining & Bar
  - » Therapy Pool
  - » Fitness Centre
  - » Hair Salon
  - » Café
  - » Central Auditorium
- On-site laundry facilities on each floor
- Outdoor walking paths, golf green, community gardens, shuffleboard, pickleball courts
- Pet-friendly community
- Multipurpose rooms for functions
- Garbage chutes on all floors
- Guest suite availability on a fee for service

## Barrier-Free Suites

- Barrier-Free Suites available, please contact the County for more information

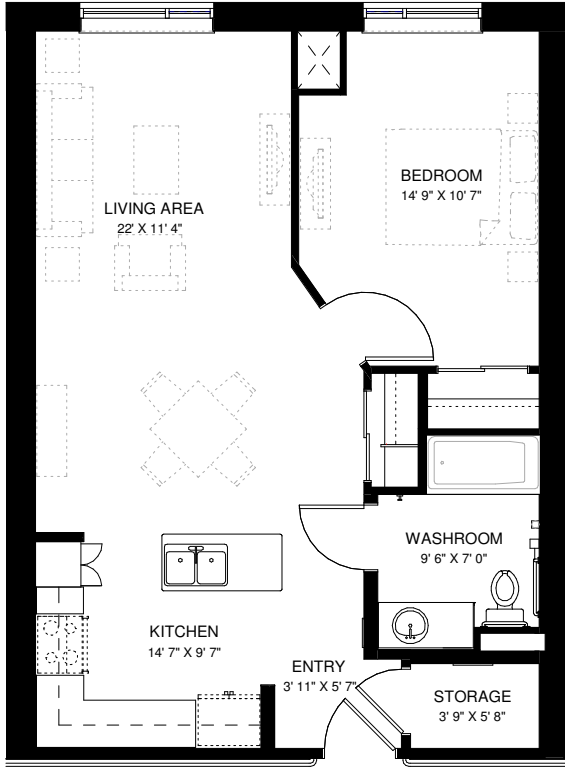
## Smoke-Free Campus

- All Simcoe Village Campus housing units and facilities are smoke/vape free



# SIMCOE MEADOWS FLOOR PLANS

One Bedroom - 695 sqft



Two Bedroom - 890 sqft

