

LEGEND

- SAN.MH1900 EX. SANITARY MANHOLE
- MH1900 SANITARY MANHOLE
- DIMHCB @ SINGLE DITCH INLET MANHOLE CATCHBASIN
- DITCH INLET CATCHBASIN
- REAR LOT CATCHBASIN
- SINGLE CATCHBASIN
- DOUBLE CATCHBASIN
- 227.84 EX. ELEVATION
- 227.84 PROP. ELEVATION
- SANITARY DRAINAGE DIRECTION
- PROPERTY LINE
- PROPOSED SANITARY SERVICE CONNECTION
- EXISTING SANITARY SERVICE CONNECTION
- DITCH INLET CATCHBASIN
- REAR LOT CATCHBASIN
- SINGLE CATCHBASIN
- DOUBLE CATCHBASIN
- EX. ELEVATION
- PROP. ELEVATION
- SANITARY DRAINAGE DIRECTION
- PROPERTY LINE
- PROPOSED SANITARY SERVICE CONNECTION
- EXISTING SANITARY SERVICE CONNECTION
- DITCH INLET CATCHBASIN
- REAR LOT CATCHBASIN
- SINGLE CATCHBASIN
- DOUBLE CATCHBASIN
- EX. ELEVATION
- PROP. ELEVATION
- SANITARY DRAINAGE DIRECTION

NOTE:
CONCEPT PLAN PREPARED BY INNOVATIVE PLANNING SOLUTIONS.
FILE:24-1417 DATE: JUNE 24, 2025

NO.	BY	DATE	REVISION	REMARKS
1	ITM	AUG.15/25	OPA/ZBA APPLICATION	

BENCHMARK: BENCHMARK No. 03120110024 ELEVATION =251.146
LOCATION:INNISFIL,ON
SURVEY OF PART OF THE NORTH HALF OF LOT 26 CONCESSION 12.ELEVATIONS SHOWN ARE RELATED TO GEODETIC DATUM CGVD28:78.

NOTE:
TOPO SURVEY COMPLETED BY JN BARNES AT JUNE 20,2023

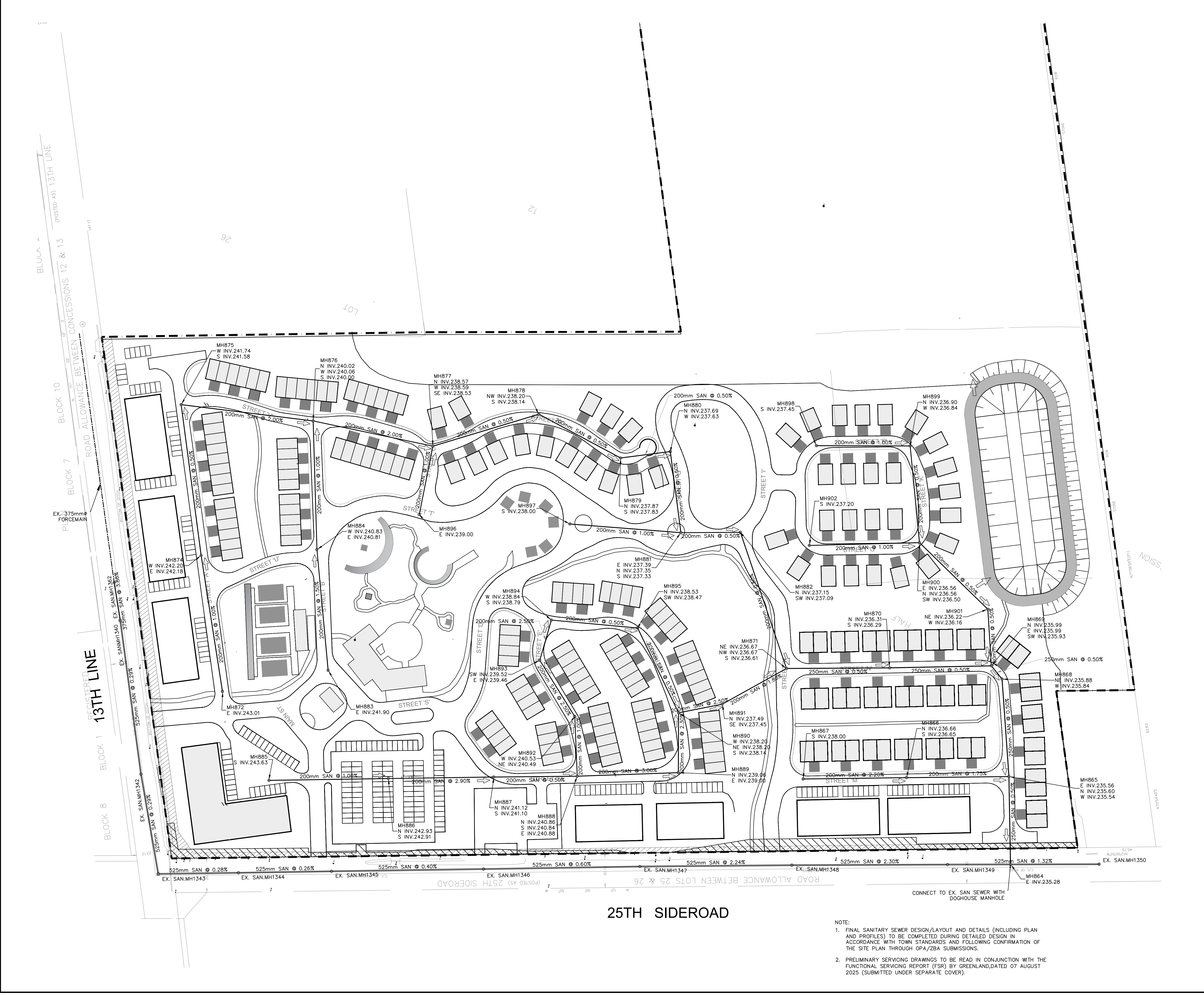


CONSULTANT:
GREENLAND Consulting Engineers
120 Hume Street
Collingwood, Ontario, L9Y 1V5
Tel: (705) 444-8805
Fax: (705) 444-5482
E-mail: greenland@gmiland.com
Website: www.gmiland.com

**3523 25TH SIDEROAD
INNISFIL
SANITARY SERVICING PLAN**

DRAWN BY:	J.A.L.	CHECKED BY:	J.M.	PROJECT No.	4441
DESIGNED BY:	I.T.M.	CHECKED BY:		DRAWING No.	SAN
SCALE:	H 1:1000	DATE:	AUG. 5, 2025		

- NOTE:
- FINAL SANITARY SEWER DESIGN/LAYOUT AND DETAILS (INCLUDING PLAN AND PROFILES) TO BE COMPLETED DURING DETAILED DESIGN IN ACCORDANCE WITH TOWN STANDARDS AND FOLLOWING CONFIRMATION OF THE SITE PLAN THROUGH OPA/ZBA SUBMISSIONS.
 - PRELIMINARY SERVICING DRAWINGS TO BE READ IN CONJUNCTION WITH THE FUNCTIONAL SERVICING REPORT (FSR) BY GREENLAND, DATED 07 AUGUST 2025 (SUBMITTED UNDER SEPARATE COVER).



TOWN FILE: