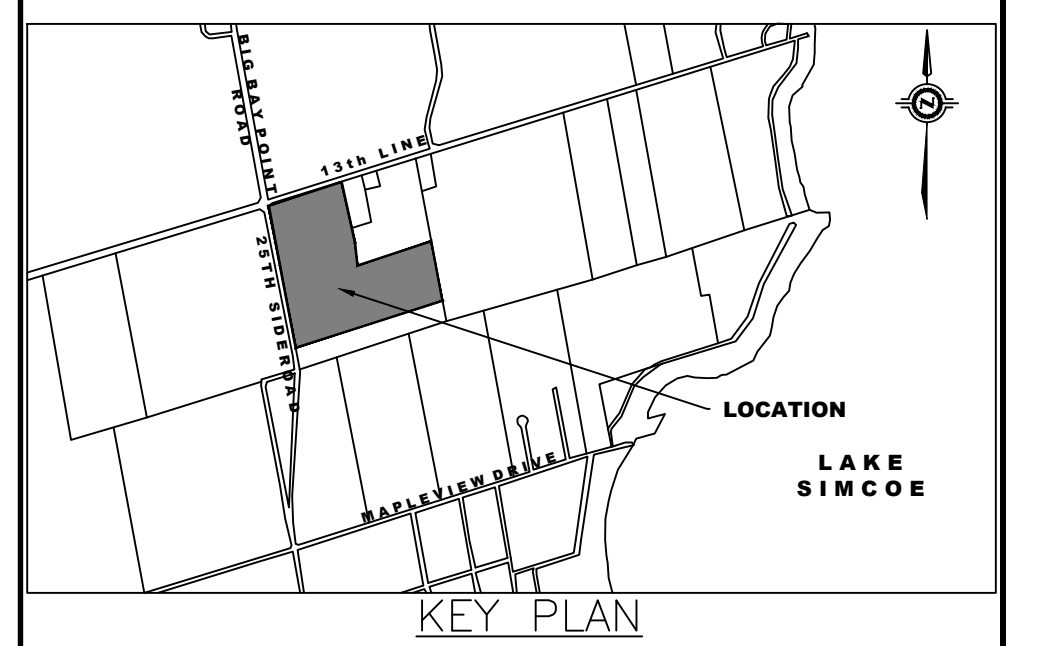
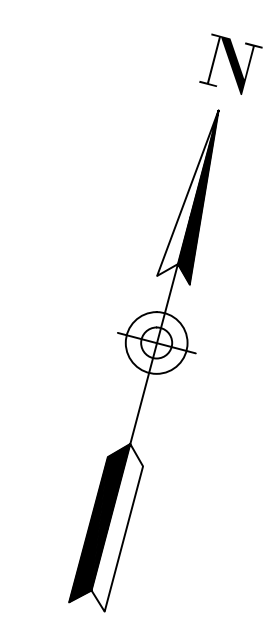
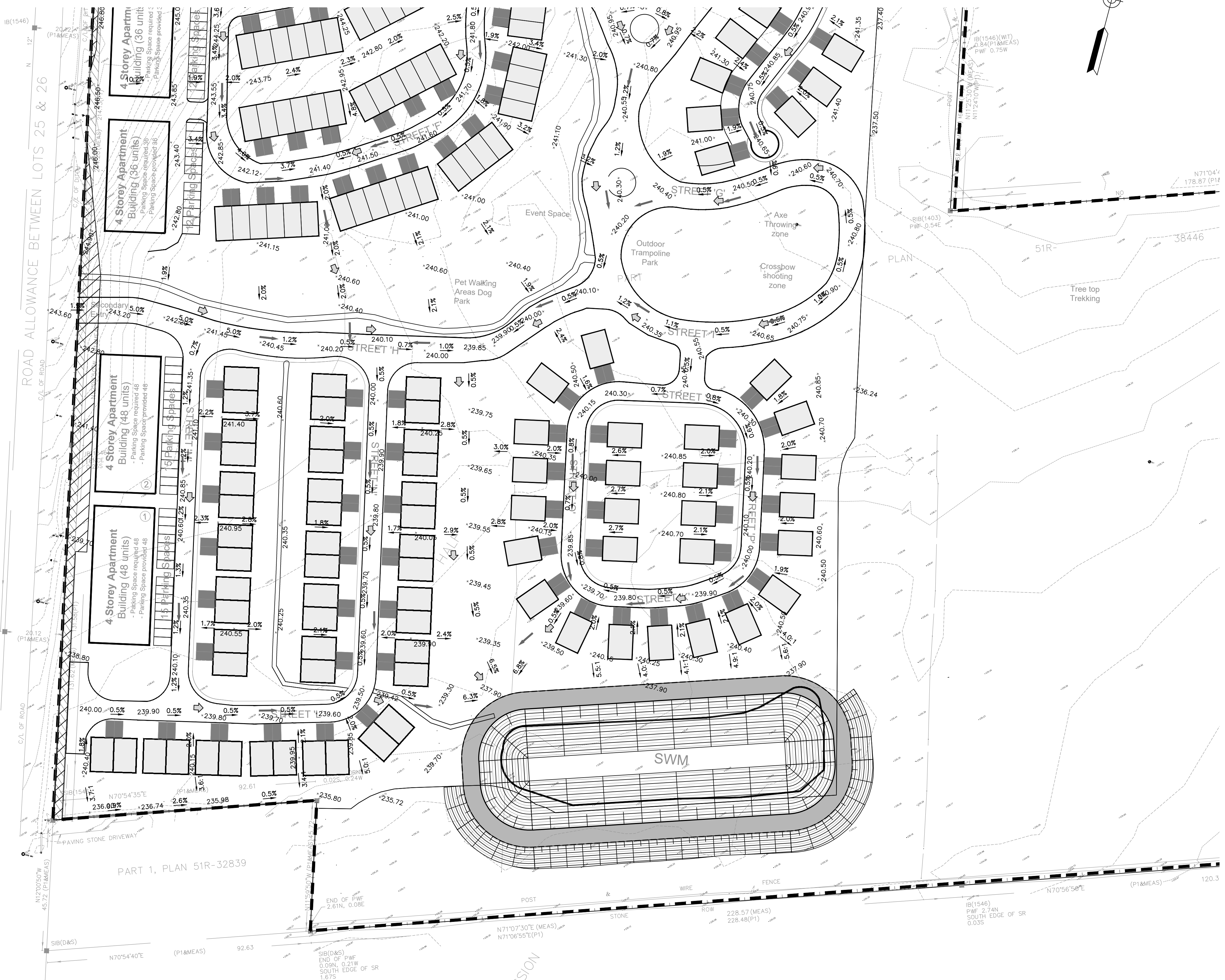


PART 1, PLAN 51R-32839
25TH SIDEROAD



LEGEND

SB(MH190)	EX. SANITARY MANHOLE	---	PROPERTY LINE
MH190	SANITARY MANHOLE	---	PROPOSED SANITARY SERVICE CONNECTION
DIM(MHCB)	SINGLE DITCH INLET	---	EXISTING SANITARY SERVICE CONNECTION
	MANHOLE CATCHBASIN	---	MAJOR PR CONTOUR LABEL
	DITCH INLET CATCHBASIN	---	MINOR PR CONTOUR LABEL
	REAR LOT CATCHBASIN	---	MAJOR EX CONTOUR LABEL
	SINGLE CATCHBASIN	---	MINOR EX CONTOUR LABEL
	DOUBLE CATCHBASIN	---	
227.84	EX. ELEVATION		
227.84	PROP. ELEVATION		
→	MINOR STORM		
→	MAJOR STORM		
0.8%	PROP. GRADE		

NOTE:
CONCEPT PLAN PREPARED BY INNOVATIVE PLANNING SOLUTIONS.
FILE: 24-1417 DATE: JUNE 24, 2025

NO.	BY	DATE	REVISION	REMARKS
1	ITM	AUG. 15/25	OPA/ZBA APPLICATION	

BENCHMARK: BENCHMARK No. 03120110024 ELEVATION = 251.146
 LOCATION: INNISFIL ON SURVEY OF PART OF THE NORTH HALF OF LOT 26 CONCESSION 12. ELEVATIONS SHOWN ARE RELATED TO GEODETIC DATUM CGVD28.78.

NOTE:
TOPO SURVEY COMPLETED BY JN BARNES AT JUNE 20, 2023



CONSULTANT:

GREENLAND® Consulting Engineers
 120 Hume Street
 Collingwood, Ontario, L9Y 1V5
 Tel: (705) 444-8805
 Fax: (705) 444-5482
 E-mail: greenland@gmiland.com
 Website: www.gmiland.com

**3523 25TH SIDEROAD
 INNISFIL
 PRELIMINARY GRADING
 AND STORM DRAINAGE PLAN**

DRAWN BY:	J.A.L.	CHECKED BY:	J.M.	PROJECT No.	4441
DESIGNED BY:	I.T.M.	CHECKED BY:		DRAWING No.	GR2
SCALE:	H 1:750	DATE:	AUG. 5, 2025		

- NOTE:
 1. FINAL STORM SEWER DESIGN/LAYOUT TO BE COMPLETED DURING DETAILED DESIGN IN ACCORDANCE WITH TOWN STANDARDS.
 2. PRELIMINARY SERVING DRAWINGS TO BE READ IN CONJUNCTION WITH THE FUNCTIONAL SERVING REPORT (FSR) BY GREENLAND, DATED 07 AUGUST 2025 (SUBMITTED UNDER SEPARATE COVER).

TOWN FILE: