



GEORGIAN VILLAGE

---

# GEORGIAN RESIDENCES

RETIREMENT LIVING SUITES

101 Thompsons Road  
Penetanguishene, ON  
(705) 549-3166



[SIMCOE.CA/LONGTERMCARE](https://simcoe.ca/longtermcare)



# GEORGIAN RESIDENCES

Retirement Living 60+

Georgian Residences residents can enjoy an outdoor patio, central dining, spa and shower rooms (if support is needed), amenity spaces, and all community programs and services of the Georgian Rendezvous Village Centre.

Variable support programs and services are available and can be tailored to suit the residents' specific needs to ensure comfort and safety and the everyday enjoyment of their home within Georgian Residences. In addition, Georgian Village offers a wide variety of amenities and activity areas for resident's use and enjoyment at the Georgian Rendezvous Village Centre, the hub of this vibrant community.



## Suite Features

- Studio and one (1) bedroom suites
- Barrier-free accessibility
- Barrier-free washroom/shower with provision for stacked washer/dryer
- Small kitchenette (no cooktop) – microwave and mini-fridge included
- Mechanical/electrical provisions for apartment-size stackable washer and dryer
- Non-slip residential flooring
- Operable windows
- Direct/indirect lighting with illuminated switches
- Full air-conditioning system, air exchange/exhaust system with independent thermostat control
- Nurse Call system with 24-hour support
- Sound and fire-rated environment including efficient and environmentally friendly building systems with LEEDS Silver Certification
- Central dining
- Spa shower and tub room (if support is needed)
- Variable programs and support care services provided

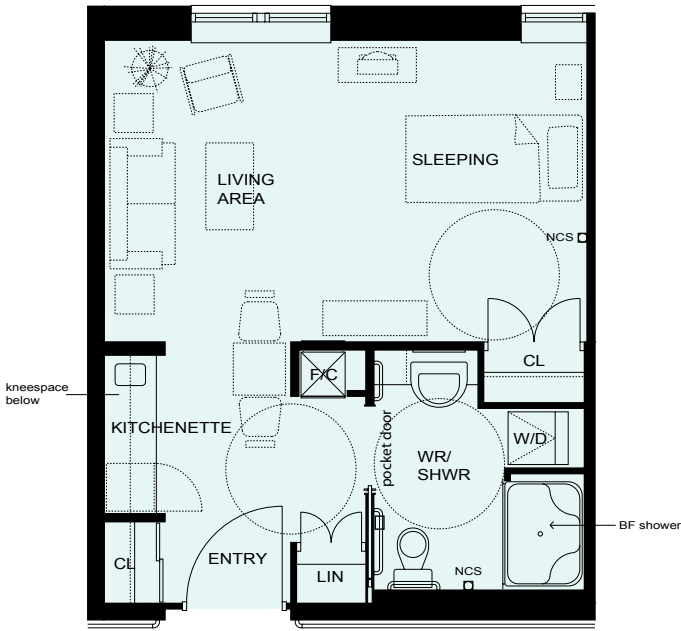
## Service Package

- 3 meals per day and snacks
- Half hour of personal care per day
- Weekly clean of unit, plus laundering of bed towels and linens
- 24 hour emergency response
- Recreational programming
- Gym membership & therapy pool access
- A-La-Carte options available

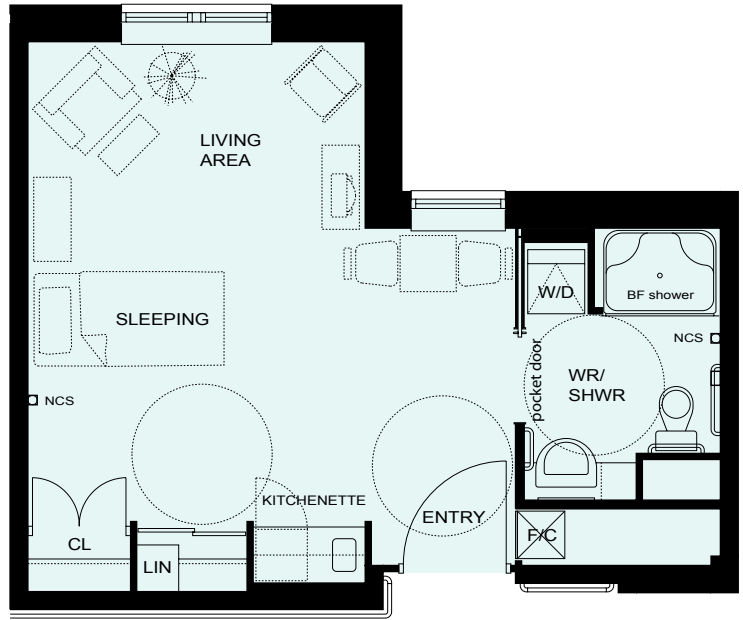


# GEORGIAN RESIDENCES FLOORPLANS

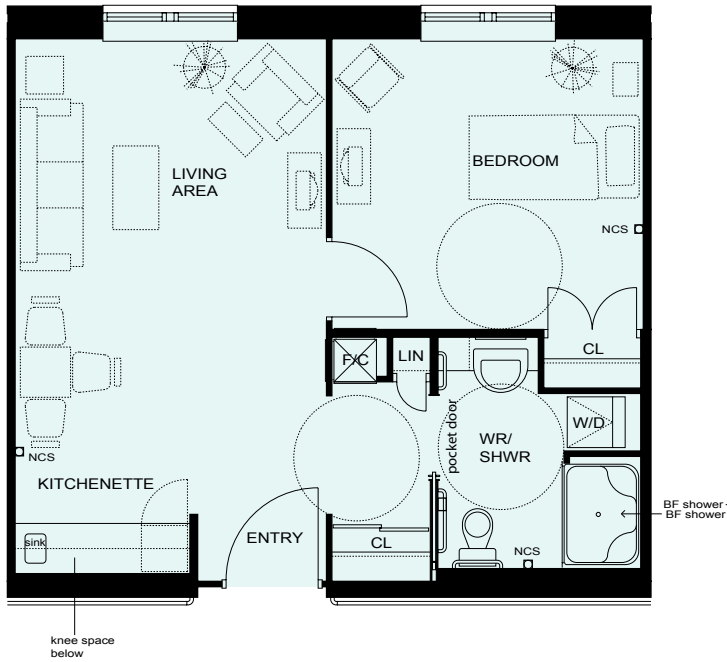
**Studio 1 - 390 sq. ft.**



**Studio 2 - 376 sq. ft.**



**1 Bedroom A - 526 sq. ft.**



**1 Bedroom B - 495 sq. ft.**

