

SIMCOE VILLAGE

Beeton  Ontario
established 2022

Simcoe Village Campus News

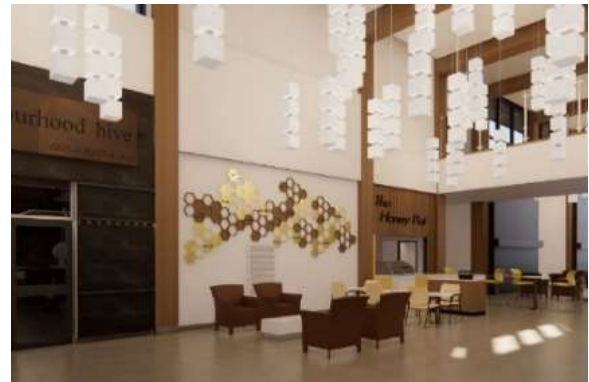
Issue 2 – November 2022

Simcoe Village Campus begins site preparation

On October 11th 2022 County Council received an update and presentation regarding the Simcoe Village Campus Project, our new seniors' campus with an age-in-place approach that includes a wide range of amenities on site. The Simcoe Village Campus will open in phases, with the Simcoe Manor long-term care home and adjoining Village Centre, supportive and affordable housing opening first in 2025, followed by the remaining housing components in 2026.

As presented to County Council, the site is currently undergoing site preparation activities, expected to be complete in mid-2023, with building construction beginning shortly thereafter.

"As we close out our Council term, I know Councillors were pleased to learn more about continued progress on this important project," said Warden George Cornell. "Approving and advancing the addition of new long-term care and seniors housing is one of this Council's biggest achievements. We continue to thank all our partners, including the Government of Ontario, for investing in this redevelopment project, and I look forward to attending the grand opening of the new Simcoe Village Campus as a past Warden in 2025."



NEXT STEP: DESIGN DEVELOPMENT

The Simcoe Manor Long-Term Care Home, Village Centre and Site Plan designs are the focus of the team at this time in order to obtain Ministry approvals, to put forth the next Site Plan submission and to submit initial Building Permit applications to the Town. Once this design phase is complete, the team will shift focus to the other residential buildings on site.

FUNDRAISING CAMPAIGN BEGINS!

The County of Simcoe has also started a vital fundraising campaign to raise \$4.5 million towards special projects at the new campus including outdoor amenities such as gazebos, garden accessories, outdoor benches, health and wellness amenities, and socialization amenities such as a coffee bar. These amenities and features will enhance the lives of those living on campus. To make donations and support these projects during the early phases of the fundraising efforts, please call us, email us, or go to [Simcoe.ca/DonateSVC](https://simcoe.ca/DonateSVC)

For more information and to read previous issues of this newsletter, please visit simcoe.ca/SimcoeVillageRedevelopment

For questions or be added to the enquiry list, we can be reached at 1-888-267-0007 or by e-mail SimcoeVillage.Questions@simcoe.ca

REPORT TO COUNCIL – OCTOBER 11, 2022

On October 11, 2022, staff brought a report and presentation to County Council outlining the progress made to-date on the Simcoe Village Campus development project.

On June 14, 2022 the County received written communication from the Ministry of Long-Term Care, that Preliminary Design Plans for the Simcoe Manor and Village Project have been approved.

The next steps in the Ministry of Long-Term Care design approval process, site plan approval, building permit application and site preparation processes are moving forward with earthworks underway as of September 7, 2022.

Staff continue to proceed with project planning and site preparation as directed by Council in May 2021 and will continue to provide project updates on a regular basis.

SIMCOE VILLAGE CAMPUS WORKING GROUP

The Simcoe Village Campus Working Group held their quarterly meeting on October 3, 2022. Items discussed at this meeting included:

- Review of progress on site
- Updated site plan
- Proposed Village and various housing component names:
 - Simcoe Manor Long-Term Care**, Village Centre – **Bees Landing**, Affordable Housing – **Simcoe Terraces**, Supportive Housing – **Simcoe Meadows**, Retirement Living - **Simcoe Residences**, Life Lease and Market Rentals – **Simcoe Suites**, Garden Homes - **Simcoe Gardens**, Town Homes - **Simcoe Villas** , and Co Housing – **Simcoe Lodge**
- Exterior and interior design concepts:

The foyer is described as a bright space with a piano, aquarium, fire place that includes a beam from the original barn located on the property, coffee station and vending machines. This area and the corridors throughout the Manor have a wood-look wall protection that runs throughout the corridor. Furniture has been chosen to replicate a home-like atmosphere with added seating for visitors.
- Proposed restaurant and coffee bar/station names:
 - Proposed Restaurant Name: **Neighbourhood Hive**
 - Proposed Café Name: **Honey Pot**

*Please note: All interior images depicted in this newsletter are **draft renderings**. Design work is subject to change*



You may call or email us to add your contact information to our Enquiry List and to receive updates and quarterly Simcoe Village Campus Newsletters. As we get closer to finalizing information on the various housing opportunities, we will be reaching out to everyone on the Enquiries List to further discuss the types of housing available and preferences, and what would best align with your needs. For questions or to be added to the enquiry list, please call **1-888-267-0007** or e-mail SimcoeVillage.Questions@simcoe.ca Website: simcoe.ca/SimcoeVillageRedevelopment

November Site Works



Southwest



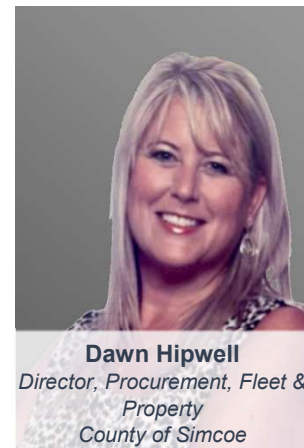
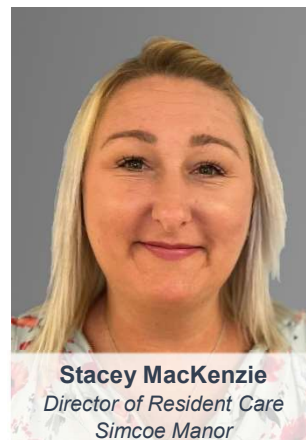
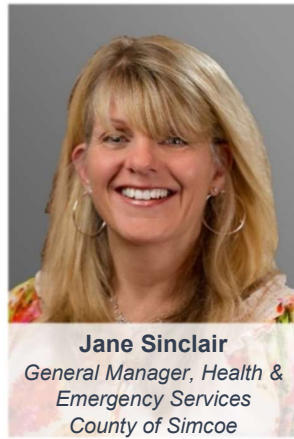
Southeast



Northwest



Meet the Simcoe Village Campus Redevelopment Leadership Team



For more information and to read previous issues of this newsletter, please visit
simcoe.ca/SimcoeVillageRedevelopment

For questions or be added to the enquiry list, we can be reached at 1-888-267-0007 or by
e-mail SimcoeVillage.Questions@simcoe.ca