
Quick Guide to the Ontario Land Property Records Portal (OnLand)

Website: <https://www.onland.ca/ui/>

The Ontario Land Records Portal, or OnLand, can be used as a tool for historical property research. Using the Historical Books portal, researchers can find information about the sale and ownership of a property dating back to the eighteenth century.

This guide provides information on how to use OnLand to research lands and properties in Simcoe County.



In order to look up a property in the Historical Books portal on OnLand, you must have the following information:

- 1) The Lot and Concession or Plan Number of the property. This information is typically included on a Land Deed or Tax Assessment. You can also find this information using a street address and the Property search portal on OnLand. Lot and Concession can also be obtained from the Simcoe County GIS Maps.
- 2) Within which historic Town or Township the property is located. The County of Simcoe has undergone a number of amalgamations, which has resulted in the changing of some municipal boundaries and names.

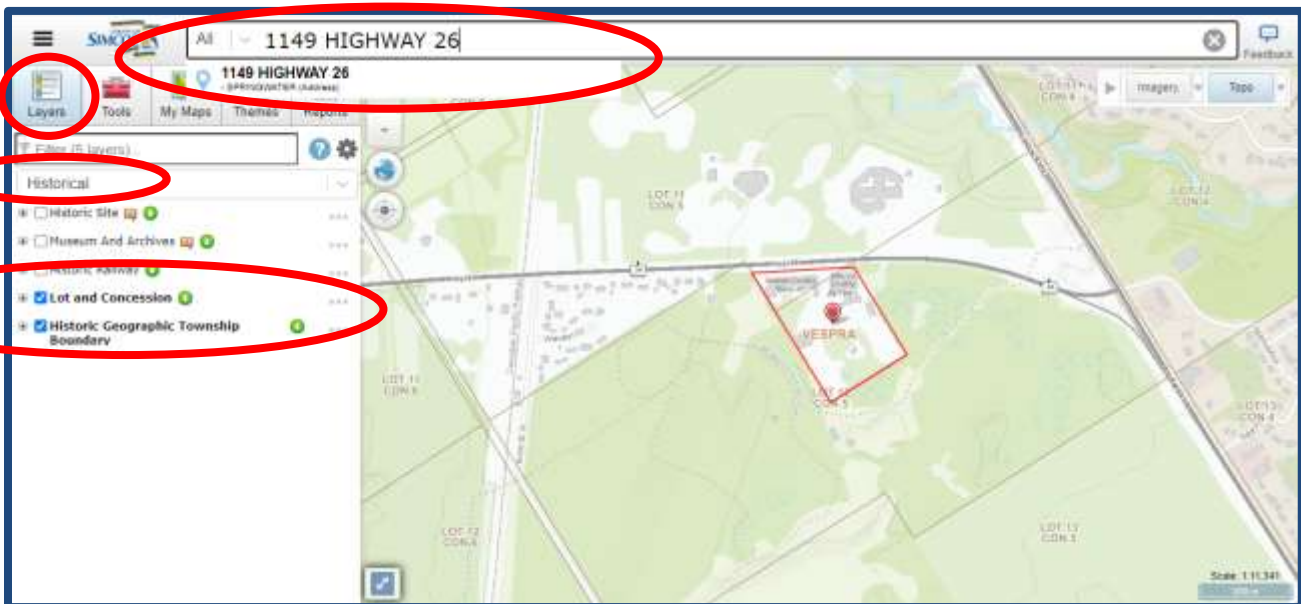


- The search results should include Lot and/ or the Plan Number in the **Property Details**. LT indicates Lot (i.e LT 110) and PL indicates Plan (i.e. PL 2). Make a note of the Plan Number and Lot Number and any directional information (i.e. N/S is North Side).
- You can use the Plan Number to access historic records for the property in the Historic Books portal for free.

Determining Lot, Concession, and Township – Simcoe County Maps

The Lot and Concession and the historic Township can also be determined using the Simcoe County GIS Map: <https://opengis.simcoe.ca/public/>. This is a good option for rural properties.

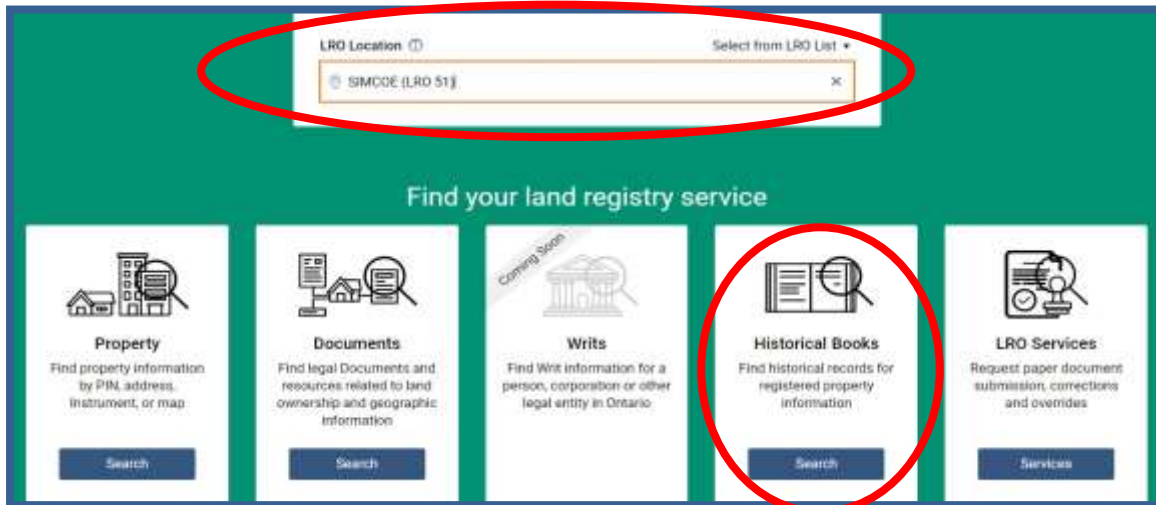
- First, enter the address you are searching in the search bar (i.e. 1149 Highway 26, Springwater)
 - The address will be highlighted and circled in red on the map
- Then, using the tool bar on the left hand side of the screen, under **Layers** select **Historical**
- Check off **Lot and Concession** and **Historic Geographic Township Boundary**
 - The Lot and Concession will appear in brown script on the map and the historic Township will appear in red
 - In this example, the address is on Lot 12 Con. 5 in Vespra Township



Looking up Historic Property Records on OnLand

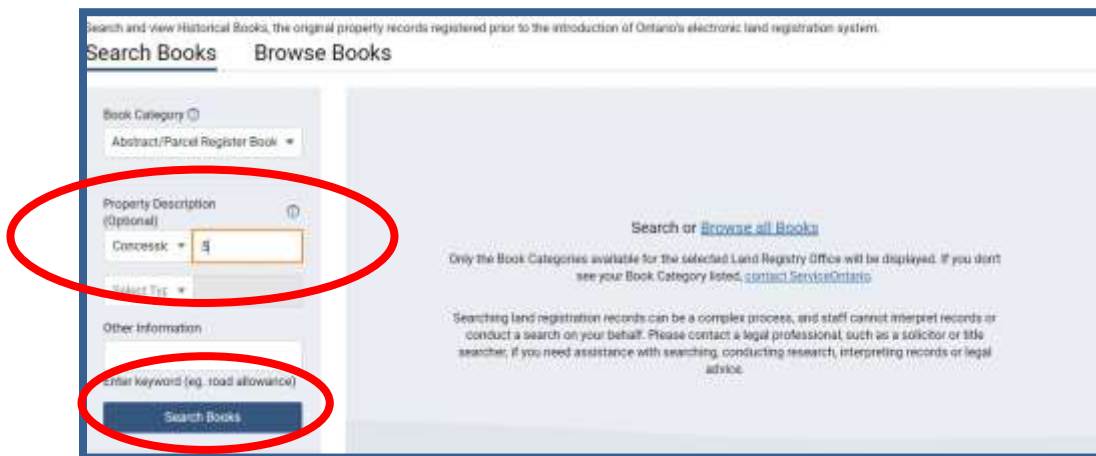
The Historical Books function on Onland allows researchers to access the historic abstract of title for a given property. This can be accomplished using either the Lot and Concession, or the Plan Number. Once you have this information, proceed to OnLand: <https://www.onland.ca/ui/>

- In the search bar enter **51**, or select **SIMCOE (LRO 51)** from the dropdown menu
- Select **Search** under **Historical Books**



If using Lot and Concession

- Under **Property Description** select **Concession** and enter the concession number (i.e. 5)
- Select **Search Books**



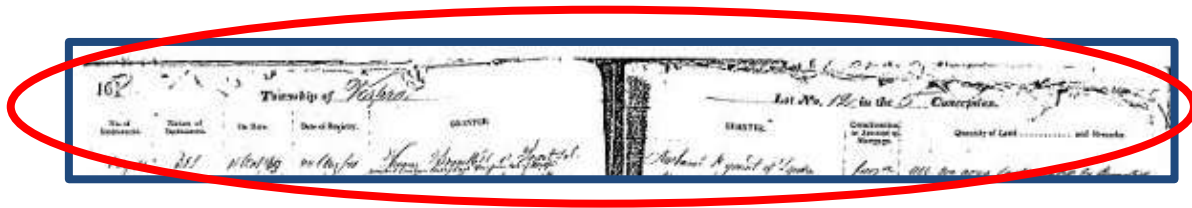
- Find the name of the historic **Township** (i.e. Vespra) your property is located in and select the corresponding **View Details**

207, 208	SOUTH ORILLIA	CONCESSION 5	View Details
221, 222	ORO	CONCESSION 5 Comments: SEE RETAKE FOR CONCESSION 5; NORTH HALF OF WEST HALF LOT 1; EAST HALF LOT 1	View Details
266, 267	SUNNIDALE	CONCESSION 1 TO 14; EAST SUNNIDALE ROAD; STREET	View Details
27, 28	ESSA	CONCESSION 5	View Details
271, 272	SUNNIDALE	CONCESSION 1 TO 14; WEST SUNNIDALE ROAD	View Details
306, 307	TECUMSETH	CONCESSION 5	View Details
370, 371	TOSORONTIO	CONCESSION 5	View Details
386, 387, 388	VESPRA	CONCESSION 5	View Details
87, 88	INNISFIL	CONCESSION 5	View Details

- Once in the correct historic book, use the tool bar on the left hand screen to **Expand**, **Rotate**, or **Zoom in** and **Zoom Out** on the page
- You can manually enter what page you would like to jump to, or use the **Previous** and **Next** buttons to move ahead or back one page at a time.

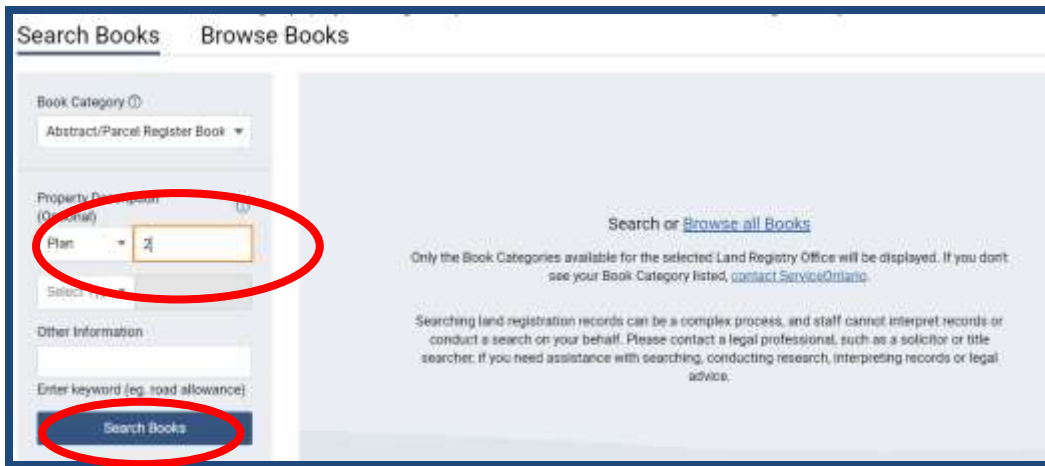
The screenshot displays a digital interface for viewing a historical document. On the left, there is a toolbar with icons for expand, rotate, zoom in, and zoom out. The central area shows a scanned page of handwritten text. At the bottom of the page, a navigation bar contains 'Previous', '230 of 747', and 'Next' buttons, which are circled in red. On the right side, there is a panel titled 'Select Desired Pages' with an 'Add Current Page' button, 'From' and 'To' input fields, and an 'Add Range' button. Below this, it shows 'Total Selected Pages (0)' and 'No pages selected.' There is also a section for 'Historical Books Certified Copies' with a price of '\$2.00' and a checkbox for 'I accept the Terms of Service *'. At the bottom right, there is a 'Request Selected Pages +' button.

- The **Township, Lot and Concession** will be listed at the top of the page

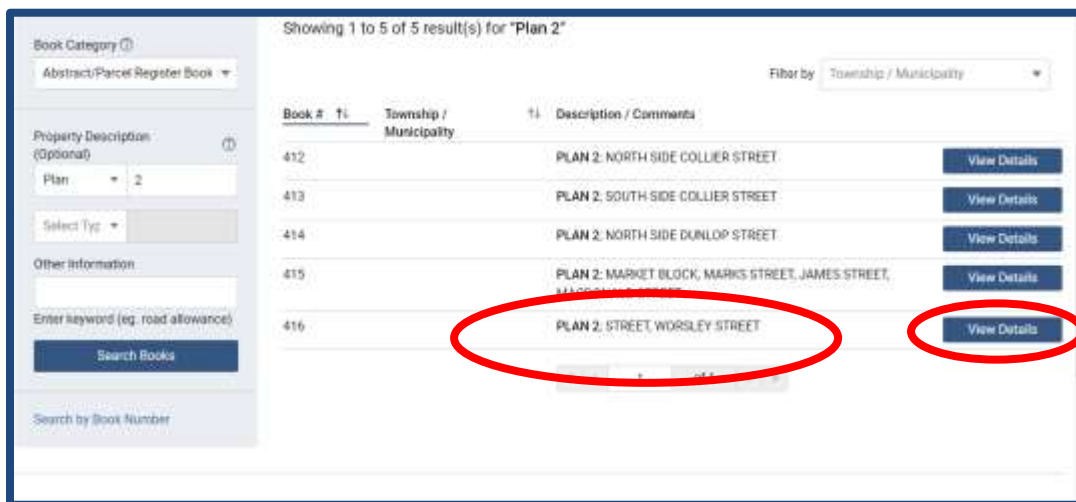


If using the Plan Number

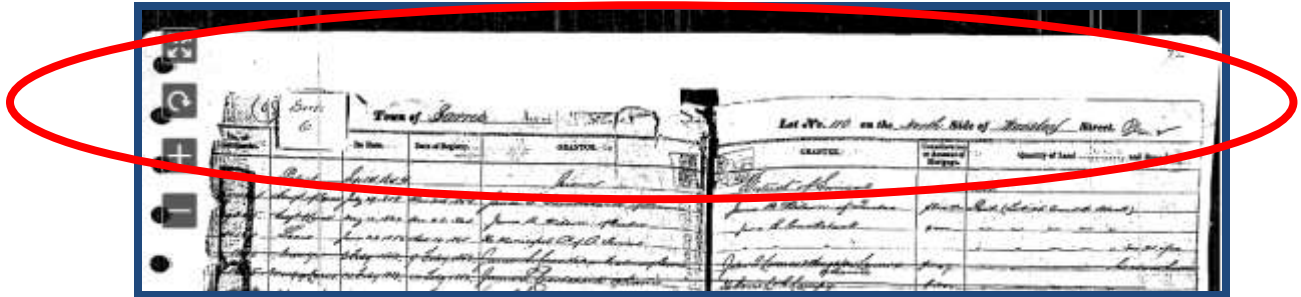
- Under **Property Description** select **Plan** and enter the Plan Number (i.e. 2)
- Select **Search Books**



- Find the Plan that best matches the property you are looking for and select **View Details**

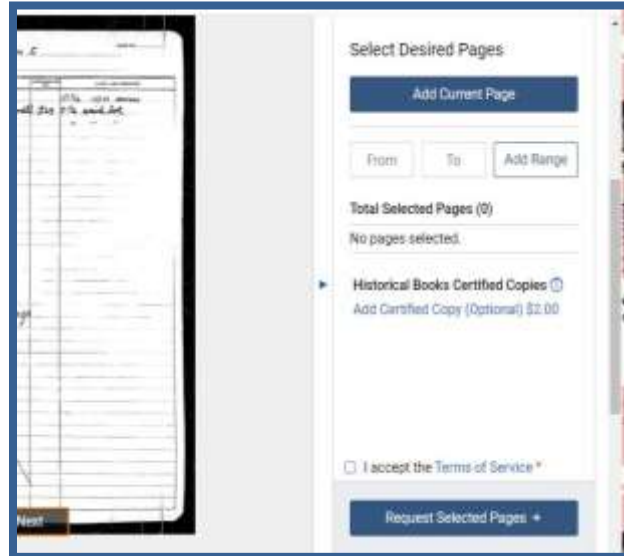


- Once in the correct historic book, use the tool bar on the left hand screen to **Expand**, **Rotate**, or **Zoom in** and **Zoom Out** on the page
- You can manually enter what page you would like to jump to, or use the **Previous** and **Next** buttons to move ahead or back one page at a time
- The **Lot** and **Plan Number** will be listed at the top of the page



Making Copies

- The tool bar on the right side of the screen can be used to select pages and order certified copies (for a fee)



- You can also use the **Snipping Tool** on your personal computer to take a screen shot of the page

