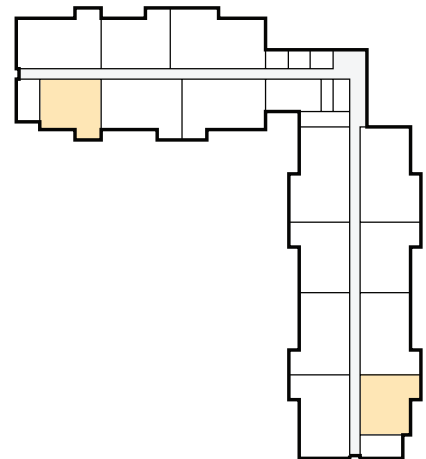


The Cove - 1 bedroom



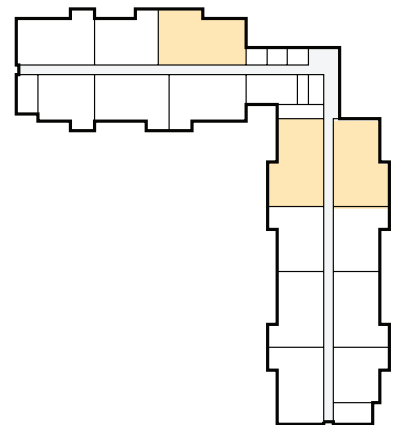
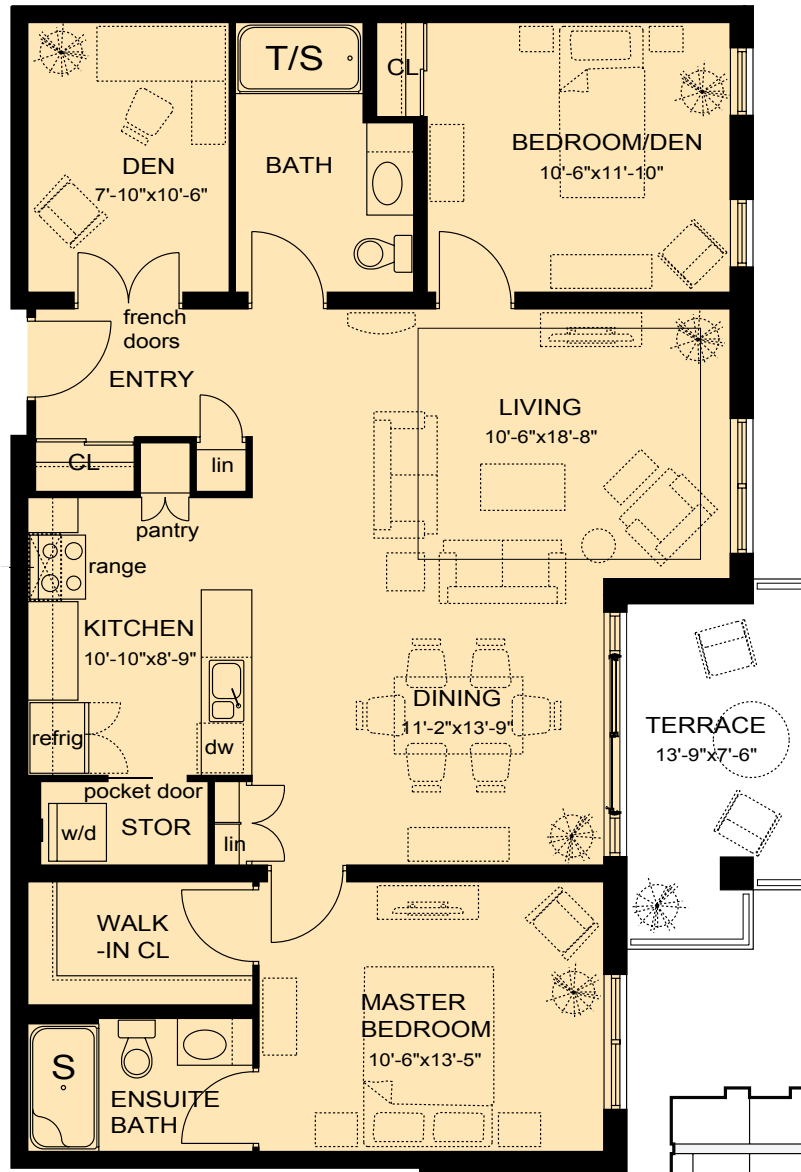
726 sq. ft.

- One large bedroom with ensuite walk-in closet
- Generous entry closet and convenient linen closet
- Large 3 piece bath with full size (60" walk-in shower with moulded seat)
- Open concept living / dining room with direct access to private terrace
- 6 quality Energy Star rated appliances (refrigerator, dishwasher, easy-cleaning stove with integrated microwave range hood)
- Laundry and storage room with stacked washer/dryer directly off kitchen



salter pilon
architecture inc.

The Harbour - 2 bedroom plus den



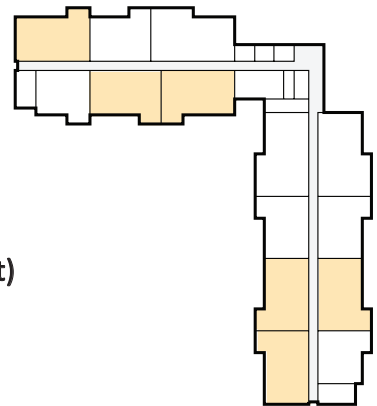
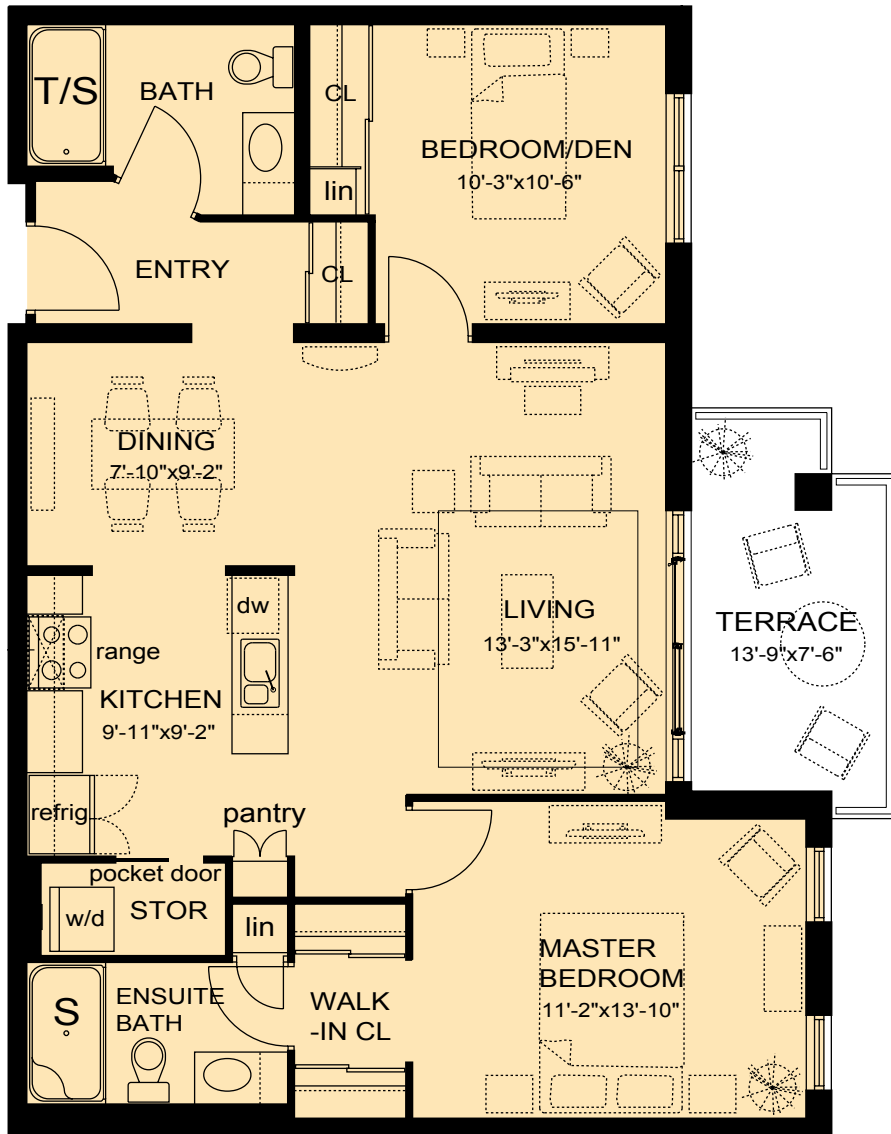
1182 sq. ft.

- Two bedrooms plus den, two baths
- Large corner master bedroom with ensuite walk-in closet
- Ensuite 3 piece bath with full size (60" walk-in shower with moulded seat)
- Open concept living/dining room with direct access to private terrace
- 6 quality Energy Star rated appliances (refrigerator, dishwasher, easy-cleaning stove with integrated microwave range hood, stacked washer/dryer)
- Second corner bedroom with direct access to 3 piece bath
- Corner Den with double french doors



salter pilon
architecture inc.

The Peninsula - 2 bedroom

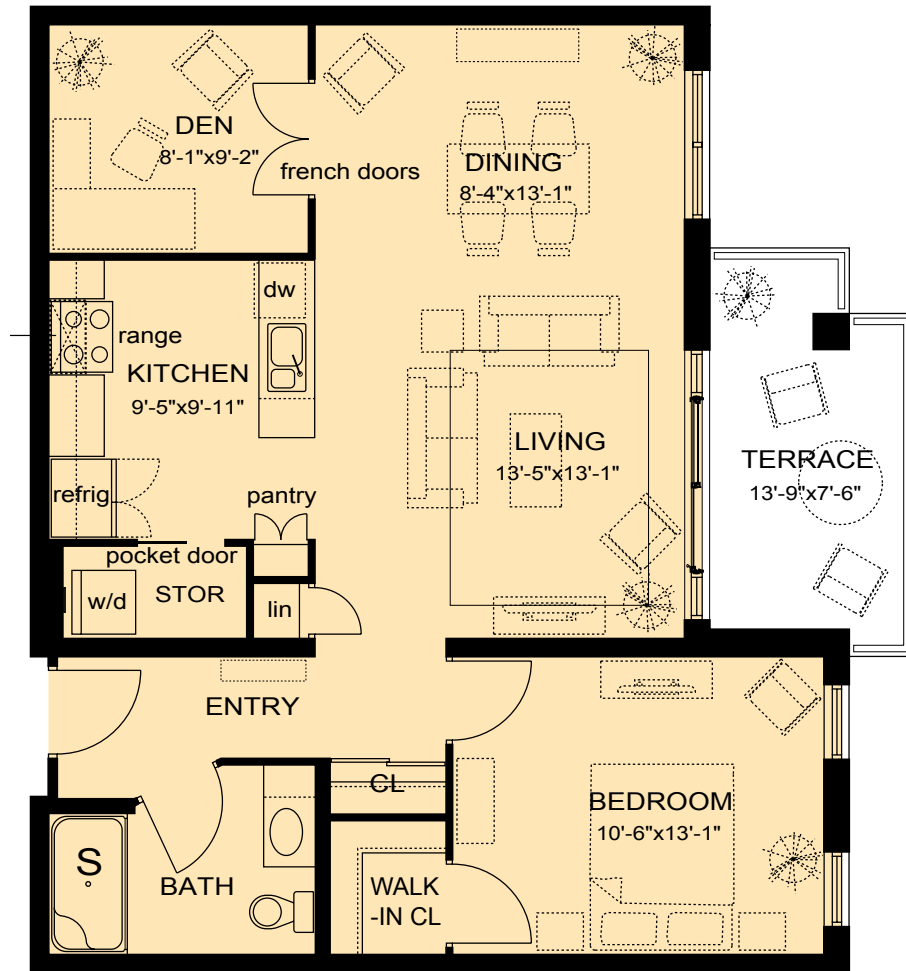


993 sq. ft.

- Two bedrooms two baths
- Large master bedroom with ensuite walk-thru his & hers closet
- 3 piece bath with full size (60" walk-in shower with moulded seat)
- Open concept living / dining room with direct access to private terrace
- 6 quality Energy Star rated appliances (refrigerator, dishwasher, easy-cleaning stove with integrated microwave range hood, stacked washer/dryer)
- Laundry and storage room with stacked washer/dryer

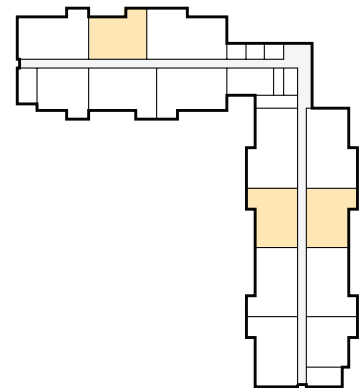


The Bay - 1 bedroom plus den



860 sq. ft.

- Spacious one bedroom plus den
- Large bedroom with ensuite walk-in closet
- 3 piece bath with full size (60" walk-in shower with moulded seat)
- Open concept living / dining room with direct access to private terrace
- 6 quality Energy Star rated appliances (refrigerator, dishwasher, easy-cleaning stove with integrated microwave range hood, stacked washer/dryer)
- Laundry and storage room with stacked washer/dryer directly off kitchen
- Corner den with double french doors



salter pilon
architecture inc.