



County of Simcoe
1110 Highway 26,
Midhurst, ON
L0L 1X0

Main Line 705-726-9300
Toll Free 1-866-893-9300
Fax 705-792-5743
simcoe.ca

MINUTES

SUBJECT: Age-Friendly Advisory Committee

MEETING DATE: November 29, 2022 **TIME:** 10:30 AM – 12:00 PM

LOCATION: Zoom Meeting Link:
<https://simcoe.zoom.us/j/91979425390?pwd=RkVfYjYzbGJia1pBb0lDM3dVVUFOUT09>

Meeting ID: 919 7942 5390, Passcode: 449968

Telephone (if required): 1-855-703-8985

CHAIR: Jane Sinclair, General Manager, Health & Emergency Services

RECORDER: Catherine Ivanyshyn, Administrative Assistant II, County of Simcoe

ATTENDANCE:

Brittany Hillier, Public Health Nurse, Simcoe Muskoka District Health Unit

Cheryl Stubbings, Manager, Helping Hands Orillia

Christina Strong, Communications Coordinator, Independent Living Services Simcoe County

Dan Leonard, Service Coordinator & Community Navigator, Independent Living Services

David Di Giovanni, Manager of Cultural Services, Bradford West Gwillimbury Public Library

Emeka Onuoha, Manager, Collaboration and Partnerships, United Way Simcoe Muskoka

Judy Contin, Executive Director, Askennonnia Senior Centre

Kristin Pechkovsky, Seniors Policy Advisor, Planning, County of Simcoe

Margaret Adolphe, Chair Accessibility Committee of Collingwood

Sherry Teeter, Community Connection/211 Central East Ontario

Tracy Hill, Programs & Support Supervisor, Seniors Services and Age-Friendly Champion


GUESTS:

Alison Howard, Director, Health System Planning & Specialized Programs

Irena Pozgaj-Jones, CAIP, Social Impact Fellow, Centre for Changemaking and Social Innovation, Georgian College

Embedded PDFs are attached to these Minutes

ITEM	ACTION ITEMS
1.0 WELCOME AND INTRODUCTIONS All committee members were welcomed to the meeting. New members and guests were welcomed.	
2.0 APPROVAL OF AGENDA The Agenda was approved as presented by Christina Strong and seconded by Margaret Adolphe.	

ITEM	ACTION ITEMS
<p>3.0 APPROVAL OF PREVIOUS MINUTES (April 5, 2022)</p> <p>The Minutes from the September 15th meeting were approved as presented by Margaret Adolphe and Christina Strong.</p>	
<p>4.0 Presentation: Connect Us</p> <p>Irena Pozgaj-Jones, CAIP, Social Impact Fellow, Centre for Changemaking and Social Innovation, Georgian College</p>  <p>Connect-Us_Age-Friendly_Nov29^LJ2022</p> <p>(Presentation is attached to these Minutes)</p> <p>Georgian College is the first and only Changemaker College in Canada to help support older adults in the community. Georgian College was identified as a the leader in social innovation and changemaking in applied education. There is a network of institutions that work together to collaborate to advance social innovation and changemaking across higher education to graduate changemakers in their communities.</p> <p>In December 2021, Georgian College joined the United Nations Sustainable Development Goals (SDGs) with a commitment to support the SDGs in programming and research.</p> <p>The Centre for Changemaking and Social Innovation (CCSI) Programs and Services are supported through a spectrum of supporters. For example, entrepreneurship is offered through the Henry Bernick Centre for Entrepreneurship to help community members, local businesses, and industry partners.</p> <p>Flourishing Economics and Communities identifies what is being done through a theory of change. There is a focus on graduating students that are employed and contributing to the capacity of flourishing economies and communities. Flourishing communities describes communities that are excelling at supporting economy, environment, and social capital. There is also support for organizations on value-driven work in communities, such as supporting skills and mindset through learning opportunities, mobilizing knowledge, projects and tools, and resources and supports.</p>	<p>Presentation will be posted on the Age-Friendly webpage.</p> <p>Irena will share workshop information through the Age-Friendly Advisory Committee.</p> <p>The Committee will welcome a member of CCSI on the Age-Friendly Advisory Committee.</p> <p>Kristin Pechkovsky, Seniors Policy Advisor, Planning, County of Simcoe to connect with Irena. Kristin.Pechkovsky@simcoe.ca</p>



County of Simcoe
 1110 Highway 26,
 Midhurst, ON
 L0L 1X0



Main Line 705-726-9300
 Toll Free 1-866-893-9300
 Fax 705-792-5743
 simcoe.ca

ITEM	ACTION ITEMS
<p>CCSI brings together diversity cohorts using sub-community innovation methods that are both traditional research and innovative research through systemic design. Open Source Platforms mobilize and generate information about bringing people together to work together in communities.</p> <p><u>Social Isolation Amongst Older Adults</u></p> <p>CCSI brought together diverse stakeholders in a community impact lab that included Georgian staff, Georgian supports and community and coop students.</p> <p><u>Community Impact Lab Methodology</u></p> <p>Cycles are matched with semesters and labs members are onboarded depending on the labs available, gage where the labs are at and specific academic programs that will support the work. Students are from various areas such as Research Analysis, Human Resources, Business students, computer studies, etc. This is done through three (3) cycles: Cycle 1: Understand issue from perspective of diverse stakeholders; Cycle 2: Co-design and build prototype to address issue and test; and Cycle 3: Reassess and explore a sustainability model.</p> <p>Connect Us started in early 2022 through Waypoint and Ontario Health Teams and then included other community partners such as Alzheimer's Society of Simcoe County, 211 Community Connections and Catholic Family Services.</p> <p>Connect Us conducted an online event for seniors in April 2022. Student volunteers were match to older adults and they created Whirligigs. Positive feedback was received. In a survey done, it was noted that the number one reason for the older adults wanting to learn technology was to reach out and connect with family. It was found that students also benefited and connected to these older adults.</p> <p>Learnings from all three (3) cycles will help assess what Connect Us found working with volunteers, older adults and community stakeholders. Connect Us continues to be community informed and will be looking at holding a workshop in 2023 to review information gathered to create a sustainable model that is</p>	



County of Simcoe
 1110 Highway 26,
 Midhurst, ON
 L0L 1X0

Main Line 705-726-9300
 Toll Free 1-866-893-9300
 Fax 705-792-5743
 simcoe.ca

ITEM	ACTION ITEMS
<p>standalone, to enhance current programs in communities and will be mobilizing this model. If interested in joining, please contact Irena at the information below.</p> <p>Email: irena.PozgajJones@georgiancollege.ca Website: www.georgiancollege.ca/ccsi linkedin.com: centre-for-changemaking-and-social-innovation</p> <p><u>Comments and Questions:</u></p> <p>In 2023, the County will be doing a review and edit of the Positive Aging Strategy for 2024 and going forward. The previous survey was conducted along with Georgian College and a number of partners.</p> <p><i>How were participants involved in the Zoom event and chosen to be invited?</i></p> <p>Connect Us worked with community partners who had direct programming with older adults and the knowledge on what support was needed. As well, some broad marketing was done through flyers at libraries, etc.</p>	
<p>5.0 Presentation: Behavioural Transitional Support Unit (BSTU) – Georgian Village</p> <p>Alison Howard, Director, Health System Planning & Specialized Programs</p> <div style="display: flex; justify-content: space-around; align-items: flex-start;"> <div style="text-align: center;">  BSTU presentation.pdf </div> <div style="text-align: center;">  NSM Geriatric MH Beds FINAL October </div> </div> <p>Georgian Village has opened a 16-bed Behaviour Support Transition Unit for those who are diagnosed with dementia with pervasive high-risk behaviours. The average stay in this Unit is 60 days. The individual is treated as part of a continuum of care for people with dementia and not intended to be a resource for emergency treatment or intervention.</p> <p>The goal of the unit is to treat someone who is currently in the community, in a hospital or in a long-term care setting who is not able to manage their responsive behaviours within their own settings. The team will work with family and friends on the</p>	<p>Alison to connect with Sherry Teeter (Community Connection/211 Central East Ontario): steeter@communityconnection.ca</p> <p>Alison to connect with Judy Contin to present at the Askennonia Senior Centre jcontin@rogers.com</p> <p>County (Alison Howard) to review BSTU brochures to include guidelines for people to access supports.</p>



County of Simcoe
 1110 Highway 26,
 Midhurst, ON
 L0L 1X0

Main Line 705-726-9300
 Toll Free 1-866-893-9300
 Fax 705-792-5743
 simcoe.ca

ITEM	ACTION ITEMS
<p>specialized unit and treat with interventions to stabilize the person, identify the best approach and provide treatment routines with the individual. They are then transitioned back into their previous setting. If they were in hospital, they will not be transitioned back to hospital, but transitioned to their home. This is interdisciplinary care where we are collaborating with community partners such as Specialized Geriatric Team and Geriatric Psychiatrist at Waypoint.</p> <p>Some eligibility criteria include a primary diagnosis of progressive dementia with response behaviors that are not managed within their current environment, despite other interventions. Individuals must have some services <u>already</u> being provided such as regional specialized geriatric services or a behavioural support team, must be medical stable and no acute delirium. There must also be clear goals identified when being referred to this Unit. Those not eligible include individuals with a major psychiatric disorder, acute brain injury, neurological illnesses, developmental delay, current forensic patients or have acute an illness.</p> <p>The application process is conducted through the Home and Community Care Program Referral Process (as in Long-Term Care). A Long-Term Care Application is completed. As well as a specific application for the Unit which is part of the package. This package is available in both English and French and uploaded through Health Partner Gateway (HPG). The team then works with Home and Community Care to determine admission date.</p> <p><u>Discharge Criteria for the program</u></p> <p>A discharge care conference is done for those who have achieved the goals set out, are no longer progressing to these goals, no longer require close and constant observation and intervention in managing behaviors and will be successful in their discharged environment. If going to Long-Term Care, they would need to reapply to Long-Term Care and be put on the wait list be accepted.</p> <p>For those on the Unit who do not show progression, the team will look at other programs and services that would be better suitable for the individual. The team will also work with Home and Community Care to help transition them to a chosen service.</p>	



County of Simcoe
 1110 Highway 26,
 Midhurst, ON
 L0L 1X0

Main Line 705-726-9300
 Toll Free 1-866-893-9300
 Fax 705-792-5743
 simcoe.ca

ITEM	ACTION ITEMS
<p>For those already in Long-Term Care, the individual would need to be discharged from their current Home due to Ministry legislation that a person cannot have two beds in a Long-Term Care Home at the same time. For this reason, many are not referred from Long-Term Care settings as Long-Term Care Homes have behavioural support teams already in place.</p> <p>The County collaborated with the Alzheimer’s Society, LOFT and Waypoint Centre for Mental Health. The BSTU team is also working with Wendat and BSO Support in transitioning people in and out of the program. The 16-bed unit opened in July 2022. The County will be doing construction for another add-on to the existing Home to be able to expand the long-term care beds, which has been approved and will be underway in spring 2023.</p> <p><u>Comments and Questions:</u></p> <p><i>Will this be expanded to other County properties?</i></p> <p>The County will be putting in a proposal for a BSTU to be located in the new development of Simcoe Village and Manor to help support the South Simcoe area. The County’s goal is to add this specialized transitional care to Simcoe Manor.</p> <p><i>What informational supports are there to help explain to family members the healthcare system and applying to Long-Term Care and/or a behavioural support transition unit? Is there a simple, printed, step-by-step brochure on how to apply, cope with behaviours, what behaviours look like, etc.?</i></p> <p>One of the challenges is to make physicians aware of this service in order to help families. The County has been doing a lot of work with community and hospital partners to share this information in order to create an understanding and awareness of the program. A one-page document has been produced to show the different specialized services in the area such as Waypoint, SGS, LOFT beds and Behaviour Unit (attached to these Minutes).</p> <p><i>Would like to see translatable wording. For example: What does “behaviours/behavioural” mean?</i></p>	



County of Simcoe
 1110 Highway 26,
 Midhurst, ON
 L0L 1X0

Main Line 705-726-9300
 Toll Free 1-866-893-9300
 Fax 705-792-5743
 simcoe.ca

ITEM	ACTION ITEMS
<p>The team will consider the language and use of examples and scenarios in literature to help the general public relate and understand.</p> <p>All feedback on these materials welcomed. Please contact Alison Howard with feedback and to schedule a presentation on the Behavioural Support Transitional Unit.</p> <p>Alison Howard, Director, Health System Planning & Specialized Programs: Alison.Howard@simcoe.ca Telephone: (705) 726-9300 ext. 6201</p>	
<p>6.0 WHAT'S HAPPENING (local community initiatives) – Roundtable</p> <p>Tracy Hill, Programs & Support Supervisor, Seniors Services and Age-Friendly Champion</p> <p>Over the last few weeks, The County has been preparing for 2023 Age-Friendly Initiatives. Currently, the team is working on the Individual Recognition and Achievement Award and criteria, the Business Recognition Award Program, the Municipal Grant program, and the 2023 Seniors Housing Grant Program. More information will be available at the January 2023 Age-Friendly Advisory Committee Meeting.</p> <p>Seniors Serves received a grant from the Seniors Community Grant Program to enhance the Community Gardens. The grant received was in the amount of \$20,900 and has been split up between all of the County's Seniors Services campuses, with a focus on Sunset Manor and Suites, where a community garden has not yet been set up. The County be working on a garden box at this location to provide fresh garden produce in the summer season for the Suites and for meals in Long-Term Care. The County's Seniors Services has also, once again, partnered with the Karma Project. They are an organization that provides fresh produce at an affordable price to seniors residents in the community. The County will be working with youth to provide an intergenerational program through this project.</p>	<p>Tracy to set up meeting with Irena Pozgaj-Jones (Irena.PozgajJones@georgiancollege.ca) Georgian College to discuss Age-Friendly Survey for 2023.</p>



County of Simcoe
 1110 Highway 26,
 Midhurst, ON
 L0L 1X0


Main Line 705-726-9300
 Toll Free 1-866-893-9300
 Fax 705-792-5743
 simcoe.ca

ITEM	ACTION ITEMS
<p>Christina Strong, Communications Coordinator, Independent Living Services Simcoe County</p> <p>Independent Living Services (ILS) continues to work on supporting seniors in their homes. ILS continues to support clients through information on accessibility resources and connections. ILS is also working on hiring more Personal Support Workers.</p> <p>Judy Contin, Executive Director, Askennonia Senior Centre</p> <p>Askennonia Senior Centre is in the process of planning for 2023. Judy will contact Alison Howard to present the Behavioural Support Transition Unit at an Askennonia Seniors Centre Meeting Lunch and Learn Series as a guest speaker. Large gatherings are in progress with success and a Christmas Party is approaching in December. Mary Moreau has been instrumental in the community to help navigate available grant services to seniors.</p> <p>Sherry Teeter, Community Connection/211 Central East Ontario</p> <p>Community Connection/211 continues with referrals regarding seniors in isolation or mental health supports. A new program resources database is being worked on. A new software program has allowed Community Connection/211 software to link with South Georgian Bay electronic Medical records to connect resources that can be stored with these records. This streamlines the flow of information for individuals.</p> <p>David Di Giovanni, Manager of Cultural Services, Bradford West Gwillimbury Public Library</p> <p>This is the first committee meeting and looking to grow events and programs in Bradford Community Library. David has a background in community engaged theatre and art practices and interested in ideas and ways to engage seniors in Simcoe County.</p>	



County of Simcoe
 1110 Highway 26,
 Midhurst, ON
 L0L 1X0

Main Line 705-726-9300
 Toll Free 1-866-893-9300
 Fax 705-792-5743
 simcoe.ca

ITEM	ACTION ITEMS
<p>Kristin Pechkovsky, Seniors Policy Advisor, Planning, County of Simcoe</p> <p>Kristin recently presented to this committee the Official Plan Amendment in relation to Age-Friendly principals. The County Planning Dept. intends on creating an age-friendly development tool to assess how a development is using age-friendly principles. The Planning team has embarked on an attainable Housing Strategy called the Housing Attainable Supply Action Plan and is looking to produce concrete action plans to address market housing and seniors housing. The Scope of Work has been developed and an RFQ (Request for Quote) was submitted. The team is now getting ready to award a consultant. In 2023, Planning will be working on an actionable plan to increase supply of housing at market level.</p> <p>Emeka Onuoha, Manager, Collaboration and Partnerships, United Way Simcoe Muskoka</p> <p>The United Way Simcoe Muskoka is currently looking for Volunteers for the Community Impact Council (CIC). There is a volunteer application (attached). The CIC is a group of volunteers that determines the projects to be funded for a typical funding cycle. The CIC is looking for an additional five or six members. The CIC is expected to finalize projects funding for the next collaborative in 2023. The application is attached for anyone interested. Emeka will also forward the application to the Committee. Contact Emeka Onuoha: Email: eonuoha@uwsimcoemuskoka.ca (attached to these Minutes)</p> <p> CI Volunteer Application 2022.pdf</p> <p>Brittany Hillier, Public Health Nurse, Simcoe Muskoka District Health Unit</p> <p>Brittany sits on the Muskoka Seniors Health Table and will connect with Sarah Orr-Shaw to share information on intergeneration opportunities and Age-Friendly work.</p>	<p>County to include CIC call for Volunteers on Age-Friendly Website.</p>



County of Simcoe
1110 Highway 26,
Midhurst, ON
L0L 1X0

Main Line 705-726-9300
Toll Free 1-866-893-9300
Fax 705-792-5743
simcoe.ca

ITEM	ACTION ITEMS
<p>7.0 Closing Remarks</p> <p>The next Agenda will include a review of the Age-Friendly Advisory Committee Terms of Reference. A Survey will be sent in advance of the January 2023 Advisory Committee Meeting.</p> <p>With an expansion of 2023 Age-Friendly programs, the County will develop a strategy for Committee involvement.</p> <p>If there are any topics or guest speakers that the Committee Members would like to see, please contact us.</p>	<p>Add Terms of Reference to the next Age-Friendly Advisory Committee Meeting (January 19, 2023).</p> <p>A Survey will be sent in advance of the January 2023 Advisory Committee Meeting.</p>
<p>8.0 Next Meeting: January 19th, 2023 (10:30 AM – 12:00 PM)</p>	
<p>9.0 Adjournment: 12:00 PM</p>	



Connect Us

A Digital Engagement Program

Centre for Changemaking and Social Innovation
Irena Pozgaj-Jones
November 29, 2022



ACCELERATE
YOUR SUCCESS



Georgian is an Ashoka U Chagemaker Campus!

Georgian College is the first and only Chagemaker College in Canada.



ACCELERATE
YOUR SUCCESS



It acknowledges we need to work together



President and CEO Dr. MaryLynn West-Moynes, Neh Thakker, a Computer Programming and Analysis student and Suzie Addison-Toor, Director of Student Success and Social Innovation.

SUSTAINABLE DEVELOPMENT GOALS





Collaborate
MORE.

COLABORATORY

Sociology Liberal Arts Human & Community Services Social Entrepreneurship Entrepreneurship Technology Engineering Health Sciences

Centre For Changemaking
and Social Innovation

Henry Bernick Centre
For Entrepreneurship

Research
and Innovation





FLOURISHING ECONOMIES AND COMMUNITIES

THEORY OF
CHANGE



Georgian graduates are employed and contribute to the capacity of Flourishing economies and communities

Organizations use 'Flourishing' strategies to increase value-driven work in our communities and economies.

Skills & Mindsets

Project-Based Learning

Tools & Resources



Students



Faculty



Community



Build partners' capacity to hire Georgian College graduates.



Create opportunities for faculty to build their understanding and teaching of social innovation.



Professional development and networking opportunities for non-profits related to social entrepreneurship.

INNOVATE TOGETHER AGENDA



Build organizational capacity to capitalize upon the use of social finance and impact investing.



Increase internal and external system capacity to provide skill-building, experiential learning opportunities.



Conduct research on social innovation and social entrepreneurship skills and mindset acquisition.



The Community Impact Lab Network.

A framework where community innovates together

Diverse
Stakeholders



Bring a
complex issue

Community Innovation
Methods



Support co-creating
and co-designing

Open Source
Platforms



Democratize and
mobilize knowledge,
tools and resources

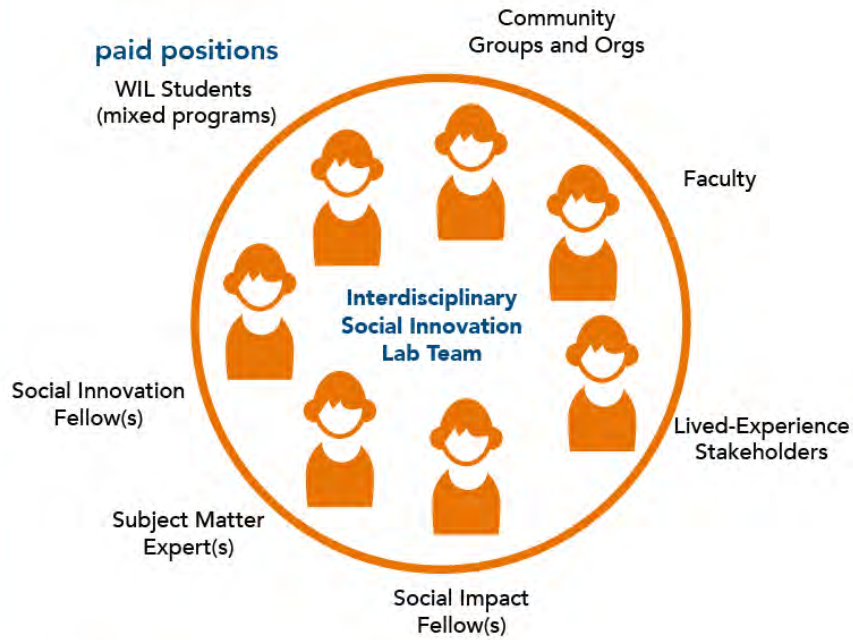
Accessible
Spaces



Convene. Share.
Prototype. Catalyse



Diverse Stakeholders



Community Innovation Methods



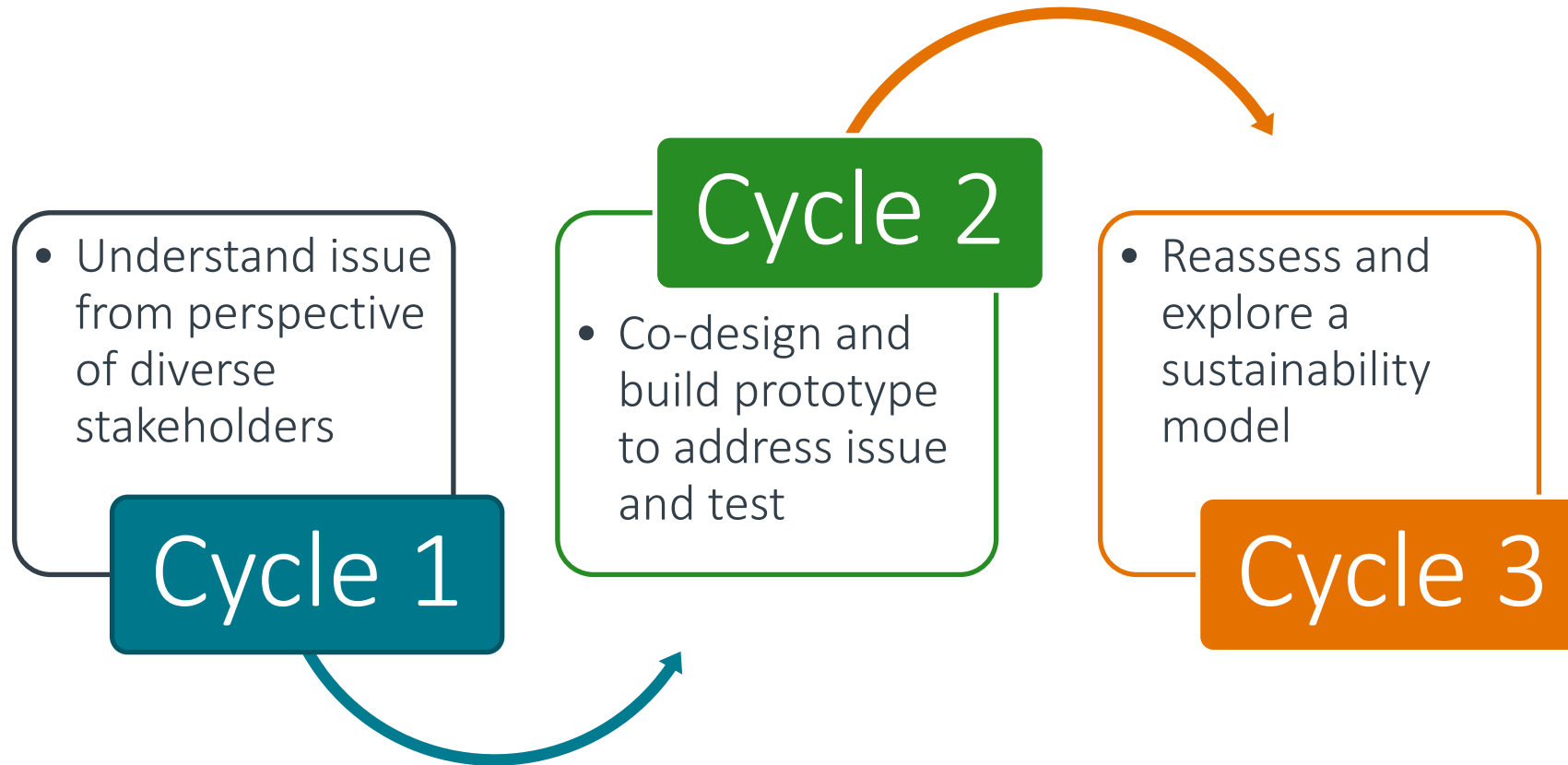
Accessible Spaces



Open Source Platforms



Community Impact Lab Methodology





**Elderly and
Social Isolated Lab**



CURRENT PROJECT

Sponsor: Waypoint Centre for Mental Health Care

Extend Virtual Care to Central Ontario Health Team for Specialized Populations Frail & Isolated Seniors

**Climate Action
Lab**



CURRENT PROJECT

Sponsor: Drawdown Toronto & CICAN

Project to explore applying the Drawdown framework to food miles and waste across our region

**Affordable
Housing Lab**

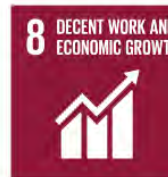


CURRENT PROJECT

Sponsor: County of Simcoe

Social and Community Services Division

**Rural
Innovation**



FUTURE PROJECT

Sponsor: TBD

Pre-Lab development and design for a Rural Community Smart Specialization Lab





Connect Us

A Digital Engagement Program

A Community Impact Lab Project currently in progress!



ACCELERATE
YOUR SUCCESS

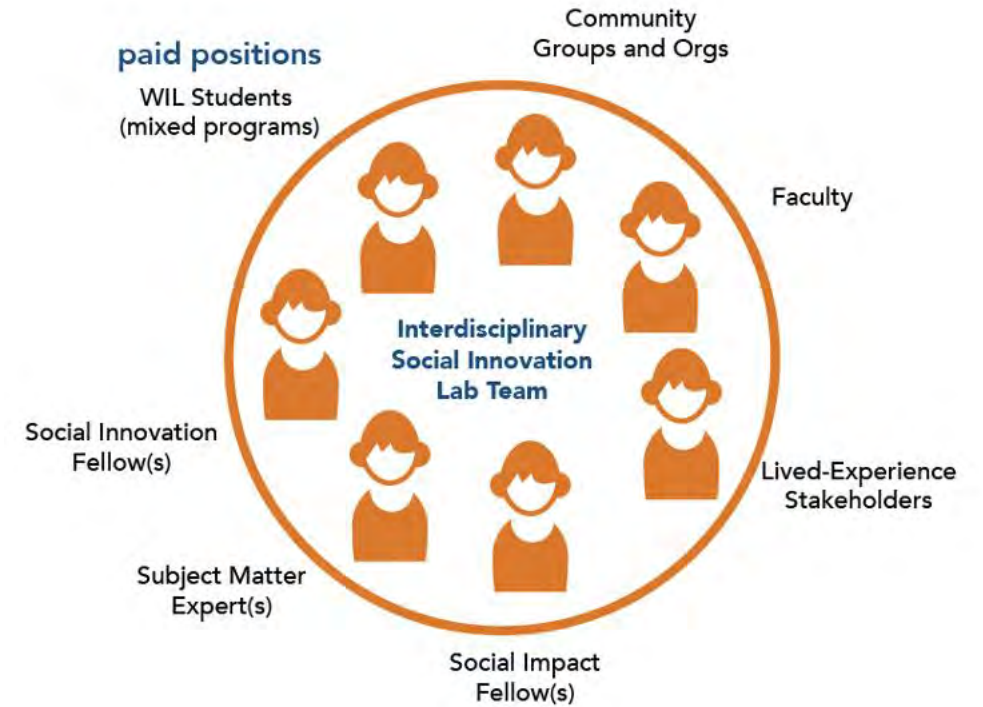


Central Ontario Health Team for
Specialized Populations

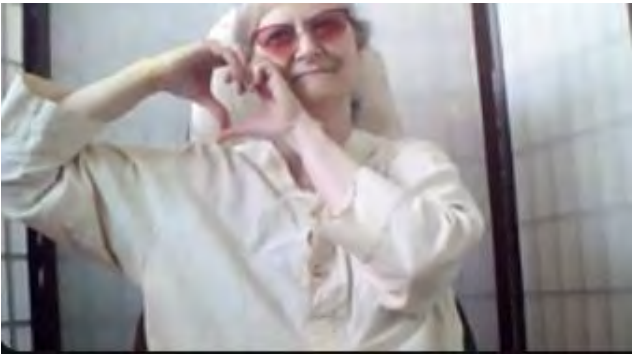


Community Working Group Stakeholders

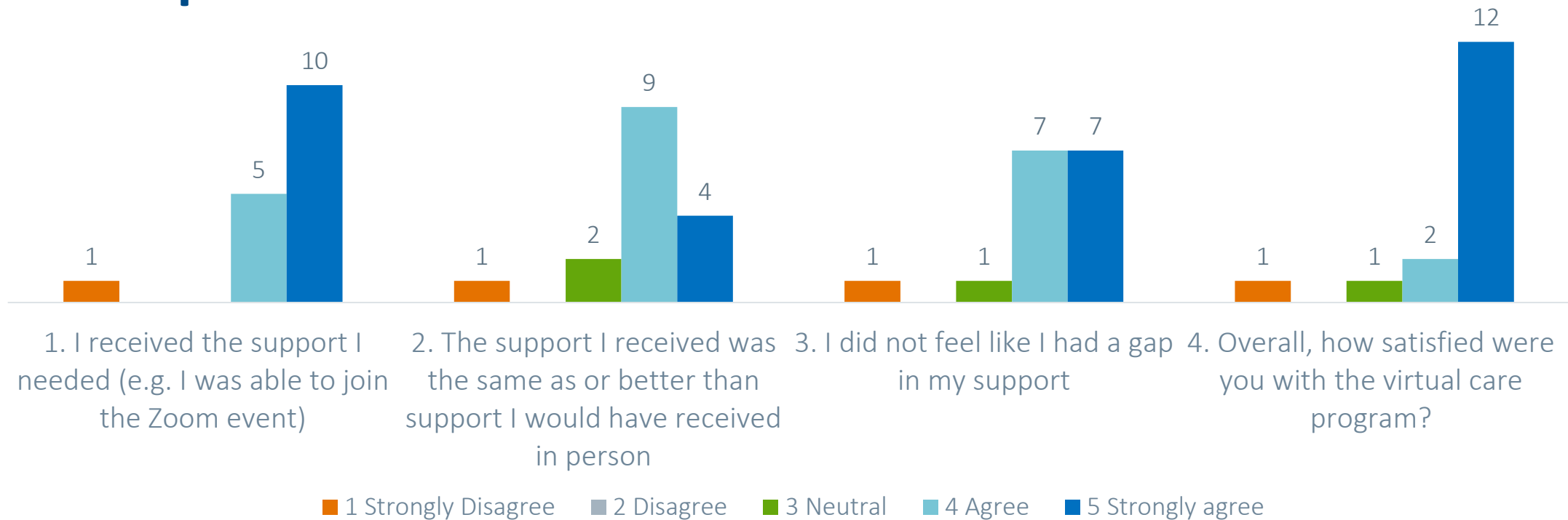
- Waypoint Centre for Mental Health
- Alzheimer's Society of Simcoe County
- 211 Community Connections
- Catholic Family Services



Online Whirligig Event April 2022



Participant Event Feedback n=16



Considering what you have learned so far, what possibilities do you see for yourself in the future in terms of using technology and online resources:

connecting with family,
games online, uploading images to computer for future resources

using Facebook to
connect with family and reach out

I would like to learn more - how to do some **online shopping**, how to use **Kijiji**, send an email, maybe **listen to Music**

know how to set it up a personal zoom meeting link to **share with other people**

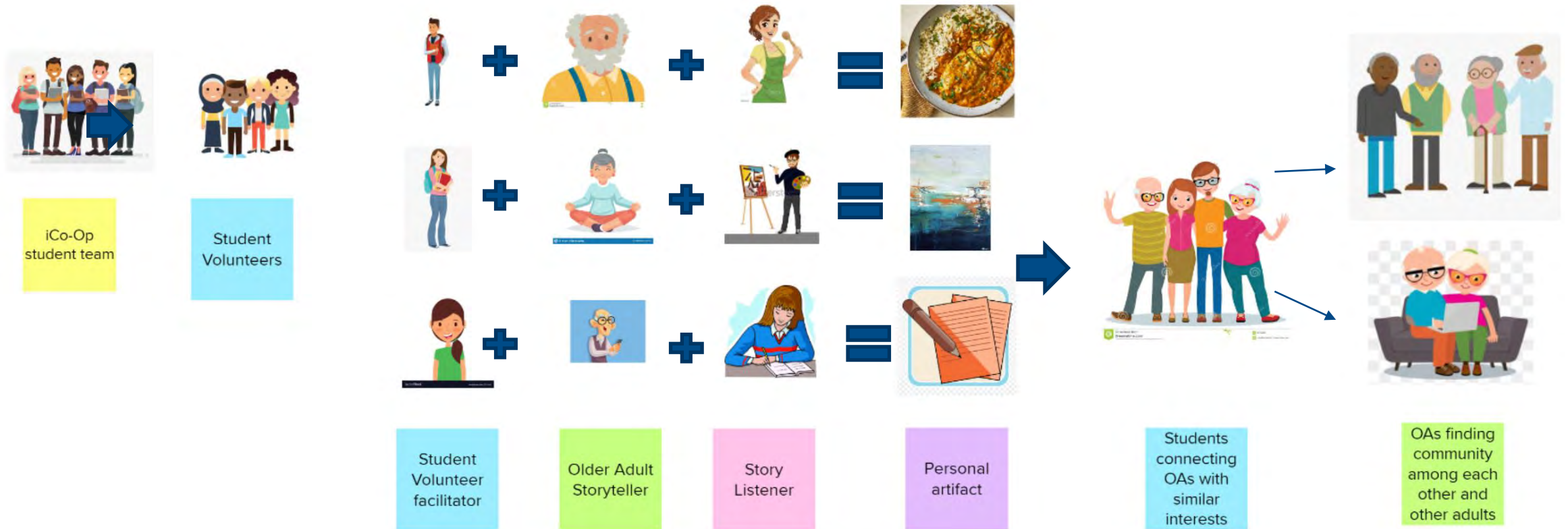
having another way to connect with family and being able to **place orders online**

zoom, skype and messenger calls to family- access to **YouTube** and **outside resources**

What we learned from Cycle 1...

- Student volunteers also felt more connected
- Challenged our assumptions: some Older Adults already ARE proficient
- Volunteers need some resources/support to learn technology
- Coordinating/scheduling is a significant component
- Need extra time for initial connections
- Stakeholders and programs are silo'd
- There are a lot of 'existing community assets' in the space but how do we connect them to tackle the issue

Cycle 2: Connect Us – Prototype of Living Library Concept



What we learned from Cycle 2...

- Engagement with all stakeholders takes a lot of time and energy – there is no quick fix and we can only move at the speed of the humans in the system
- Through the process we uncovered many community assets and knowledge that was not previously identified until we understood what we were looking for – stakeholders had to see the concept in action and say “you know who does that well...”
- We had to go back and reframe our scope for the getting the prototype to feasible pilot
- Invited new stakeholders to help launch the pilot and test our prototype

Moving into Cycle 3...

- Reflect and assess what we've learned
- Community-informed: workshop in early 2023
- Co-design a sustainable model
- Mobilize the knowledge



Thank you

- Irena.PozgajJones@georgiancollege.ca
 - www.georgiancollege.ca/ccsi
 - [linkedin.com](https://www.linkedin.com)
- centre-for-changemaking-and-social-innovation



Centre for Changemaking
and Social Innovation



Geriatric Mental Health Beds in North Simcoe Muskoka

October 11, 2022



LOFT

Community-Based Supportive Housing

Specialized transitional & long-term supportive housing for older adults with mental health and addictions, dementia, responsive behaviours, social determinants of health, physical health & psychosocial needs

Simcoe Terrace
Barrie: 48 beds
Tudhope Manor
Orillia: 44 beds
Georgian Bay Seniors Lodge
Penetanguishene: 27 beds

Unlimited (Housing)

- Older adults 55 +; other ages considered case-by-case
- Designated ALC or at Risk of ALC in a NSM hospital
- Needs subsidized permanent housing with specialized supportive housing/assisted living support
- Complex challenges (e.g. mental health/addictions, dementia, responsive behaviours, neuro disorders, ongoing physical health issues, psychosocial, social determinants of health)
- **Exclusion:** functional/medical needs beyond unit ability/capacity (e.g. 2- person transfer, tracheostomy)

*** Acceptance of housing offer by patient required**

Via:
LOFT Community Services – Centralized Access
Call: 1-844-798-6920
Fax: 1-844-834-4638

LOFT Community Services
OR
Call: 1-844-798-6920

Horizon

Horizon Program for Geriatric Psychiatry

Inpatient tertiary level care program with specialized services to meet the complex mental health needs of older adults with serious mental illness

Waypoint Centre for Mental Health Care
Penetanguishene
28 beds

60 Days

- Older adults 65+; <65 with major neurocognitive disorder (dementia) considered
- Need inpatient admission for:
 - Long-standing and/or newly diagnosed psychiatric disorders
 - Psychiatric conditions due to medical conditions or substances/ medications
 - Electroconvulsive Therapy (ECT) initiation
- Currently on service with a Specialized Geriatric Services Program or Behaviour Supports Ontario Team
- **Exclusion:** medical needs beyond unit abilities; active alcohol/substance misuse/ abuse/withdrawal; Acquired Brain Injury (ABI) in absence of neurocognitive or major psychiatric disorder; requires palliative/ residential care; minimal psychiatric goals

Via:
Waypoint Central Intake Referral Form
OR
Call: 1-705-549-3181 ext 2308 OR 1-877-341-4729

Waypoint Centre for Mental Health Care
OR
Call: 1-705-549-3181 ext 2308

BSTU

Behaviour Support & Transition Unit

Transitional treatment unit for older adults with a primary diagnosis of dementia and responsive behaviour(s)

Georgian Manor Long-Term Care Home
Penetanguishene
16 beds

60 Days

- Older adult with diagnosis of progressive dementia with or without neurological conditions AND responsive behaviour(s) not managed within current setting, despite interventions.
- Currently on service with a Specialized Geriatric Services Program or Behaviour Supports Ontario team
- Achievable SMART goals and plan for discharge identified by referring source
- Medically stable
- **Exclusion:** high risk harm to self/others; meeting criteria for Form 1/3 certification; primary cause of responsive behaviour(s) due to issues outside dementia; forensic patients; functional/medical needs beyond unit ability/capacity (e.g. trach)

Via:
Home & Community Care (LTC application required)

Call:
Georgian Manor 705-549-3166
OR
Alison Howard
705-726-9300 ext. 6201

GEORGIAN MANOR BEHAVIOUR SUPPORT TRANSITION UNIT



Behaviour Support Transitional Unit (BSTU)

A treatment transitional unit for clients who have a primary diagnosis of dementia with pervasive, high-risk behaviours.

Being treated in the BSTU is one option in a continuum of care for clients with dementia.

The BSTU is not intended to be a resource for emergency treatment or intervention.

BSTU Goals

- Provide intensive programming for clients with responsive behaviours
- Transition clients to allow them to transition into a long term care home or return to their community
- Work with the client and their family/friends to stabilize the individual through identifying the best approach / routine / triggers
- Provide an interdisciplinary approach to care and collaborate with community partners and staff within an appropriately staffed and equipped setting

BSTU Eligibility Criteria

- Have a primary diagnosis of a progressive dementia with associated responsive behaviour(s)
- Are currently on service with Regional Specialized Geriatric Services or Behaviour Supports Ontario team
- Medically stable and/or medical conditions that can be managed on the BSTU, no delirium (e.g. diabetes)
- Clear goals for discharge identified by referral source

Note: Where a potential client does not meet the above eligibility criteria, the interdisciplinary BSTU admission team may consider the admission on a “case by case” basis.

Exclusion Criteria

- Individuals at high risk of suicide or harm to others
- Individuals with an active delirium
- If the primary cause of behaviour is a major psychiatric disorder (IE. Schizophrenia), acute psychosis, substance abuse, neurological illness (IE. Huntington's), traumatic brain injury, or developmental delay
- Individuals who require hospital-based care and are deemed medically unstable
- Current forensic patients

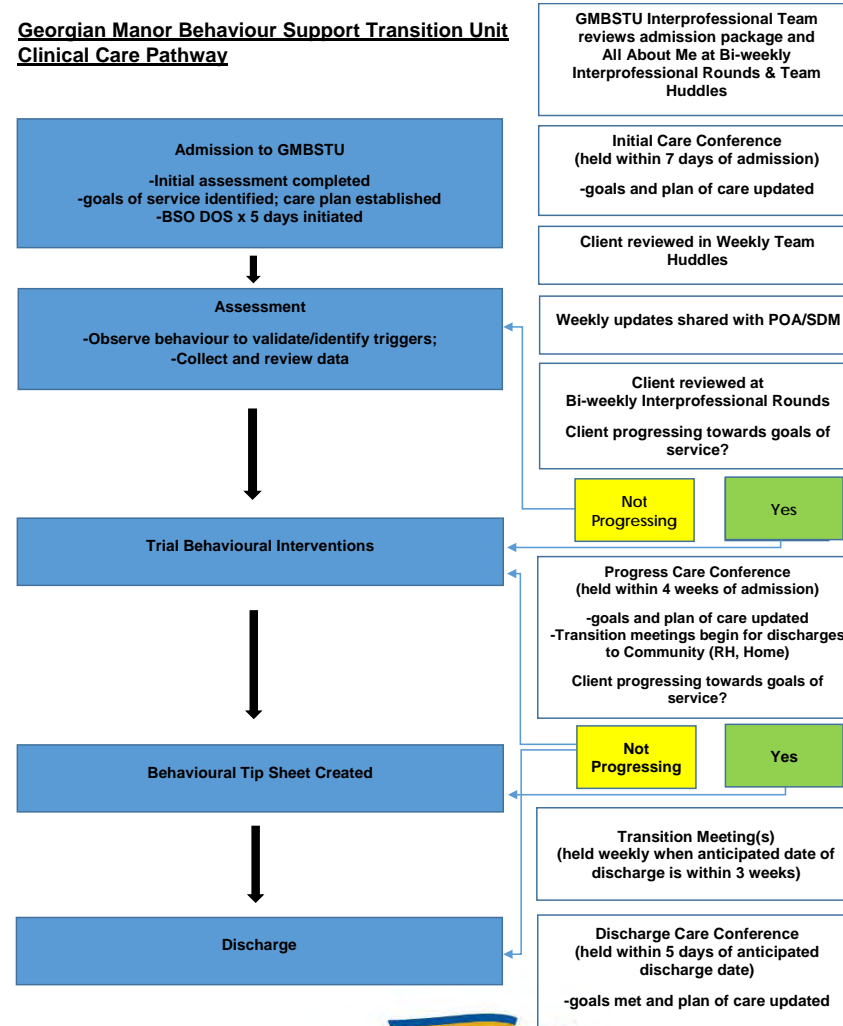
Application Process

- Complete HCCSS referral
- Complete Georgian Manor Behaviour Support Transition Unit application – available in English & French
- BSTU team will review the referral through HPG and provide a response
- Will work with HCCSS care coordinator on admission dates

Discharge Criteria

- No longer a risk to self or others
- No longer require close and constant observation and/or intervention
- Sustained and consistent improvement in the management of the behaviour with interventions
- Full behavioural pharmacological review of medications is completed
- BSTU discharge plan, including care plan, is completed
- No longer progressing to goals

Review of Clinical Care Pathway



Common Questions – What are specialized interventions?

Specialized interventions would be those interventions and resources the care team has already used for a person. We would like to see that referrals and resources in the community or available in hospital have been tried or accessed prior to referring to the BSTU.

Common Questions: What if the client is no longer progressing in the BSTU?

If someone is not making progress in the BSTU we will work with the team and see what other services and programs are available within or outside of the Region that would be suitable to meet the client's needs.

Common Question

If a client from LTCH is admitted to the BSTU when they are ready for discharge will the client return to the LTCH?

A client cannot have two LTC beds at the same time; if they come from a LTCH they will be discharged from that Home.

When ready for discharge, the client will reapply to LTC. There is a special priority for individuals waiting for admission to a LTC who are currently in a BSTU bed.

Contact Information

Georgian Manor Long Term Care Home

705-549-3166

Alison Howard, Project Lead, BSTU

Alison.howard@simcoe.ca

705-737-7134

QUESTIONS

COMMUNITY INVESTMENT: Community Investment Council (CIC)

Volunteer Application - 2022

Purpose and Scope:

The United Way Simcoe Muskoka's (UWSM) Community Impact Council (CIC) is comprised of volunteer representatives of Simcoe Muskoka who lend their experience and expertise to the grant making process by making funding recommendations to the Community Investment & Engagement Standing Committee (CIESC). The CIESC subsequently sends those recommendations to the Board of Directors for approval.

The CIC is a subcommittee of the CIES Committee of UWSM's the Board of Directors.

Mission: To improve lives and build community by engaging individuals and mobilizing collective action.

Roles and Responsibilities:

1. Ensure that UWSM community investment goals and priority areas are taken into consideration in all grant-making processes
2. Review application forms and documents'; prepare additional interview questions (if required) to ensure applications meet criteria including:
 - Agency capacity to deliver the program
 - Program alignment to agency's mission
 - Evidence and need for the program
 - Adaptability and client centered
 - Alignment to focus area and investment priorities
 - Target population and clients serviced
 - Impact of the program on clients
 - Intended outcomes of the program
3. Conduct Interviews where warranted as part of the application review process with support from UWSM staff.
4. Complete review, assessments and scoring of applications.
5. As a council, form recommendations to the UWSM Community Investment & Engagement Steering Committee on which funding allocations will create a strong network of supports exhibiting diversity in geography, populations served and range of programs/interventions or services. All recommendations are then presented to the United Way Board of Directors for final approval.
6. To provide a safe and confidential environment for sharing information.
7. Ensure a fair, transparent, equitable funds allocation process.
8. Support United Way in our growth and development
9. Provide feedback and recommendations to UWSM on capacity building, advocacy and collaboration
10. Review Annual Reports from funded agencies to inform United Way of accomplishments and gather data on clients impacted by the program, ensure agency accountability and understand circumstances that may influence program impact, making recommendations for support if needed.



**United Way
Centraide
Simcoe Muskoka**

Time Commitment

The commitment is for a three-year term with an option to continue for an additional term. Approximately 4-6 hours per month would be dedicated to activities/meetings in-person or virtually, typically September through June. Participation on a Board standing committee is included in this time commitment.

Who Should Apply?

Interested applicants should meet the following criteria:

1. Possess a desire to serve their community and contribute their time, knowledge and skill
2. Have experience in committee/team work
3. Could be individuals with “expertise” in given priority areas
4. Could be individuals from United Way’s donor base who understand community issues
5. Have no, or limited, Conflicts of Interest
6. Include one or two young adults (18-25 years of age)
7. Member must be appointed by the Board as well as the Community Investment & Engagement Standing Commitment (CIESC)

Interested applicants are encouraged to send their resume and completed volunteer form (pg.3 & 4) to: Emeka Onuoha – Manager, Collaborations & Partnerships at EOnuoha@UWSimcoeMuskoka.ca

The United Way Simcoe Muskoka is strongly committed to diversity within its community and especially welcomes applications from racialized persons / persons of colour, women, Indigenous / Aboriginal People, persons with disabilities, LGBTQ2S+ persons, and others who may contribute to the further diversification of ideas.

As part of your application, you may be asked to complete a brief Diversity Survey. This survey is voluntary. Any information directly related to you is confidential and cannot be accessed by search committees or human resources staff. Results will be aggregated for organisational needs identification and planning and service delivery and implementation purposes.

If you require accommodation at any point during the application and hiring process, or have any questions, please contact

Emeka Onuoha | Manager, Collaborations & Partnerships United Way Simcoe Muskoka

Email: EOnuoha@UWSimcoeMuskoka.ca



United Way
Centraide
Simcoe Muskoka

Community Impact Council (CIC)

VOLUNTEER APPLICATION

Name: _____ **Position:** _____

Organization: _____ **Email:** _____

Phone Number: _____

I represent the following Sub-Group(s). Please check all boxes that apply:

- | | |
|---|--|
| <input type="checkbox"/> Academic & Research | <input type="checkbox"/> Veterans |
| <input type="checkbox"/> Accessibility (Physical, Developmental) | <input type="checkbox"/> Public Sector |
| <input type="checkbox"/> Racialized persons / persons of colour, women, Indigenous / Aboriginal People, persons with disabilities, LGBTQ2S+ persons | <input type="checkbox"/> Private Sector |
| <input type="checkbox"/> Health | <input type="checkbox"/> Not-for-Profit Organization |
| <input type="checkbox"/> Legal/Corrections | <input type="checkbox"/> Seniors |
| | <input type="checkbox"/> Youth |
| | <input type="checkbox"/> Mental Health & Addictions |

My organization has received **United Way Community Impact** funding previously (Yes/No): _____

My organization **currently** receives **United Way Community Impact** funding (Yes/No): _____

In 250 words or less, please explain why you would like to join the CIC. Please include the expertise, skills and/or networks that you could offer the committee:



Please describe your experience with reviewing and assessing funding applications:

In 250 words or less, please describe your knowledge and/or experience with vulnerable populations in Simcoe Muskoka. Vulnerable populations could also be seen as racialized persons / persons of colour, women, Indigenous / Aboriginal People, persons with disabilities, LGBTQ2S+ persons.