

# Simcoe County Data Consortium UPDATE

Community Data Program | November 2015

## Strength-in-Numbers

The CCSD is pleased to release Strength-in-Numbers, a new series of infographics, fact sheets and reports highlighting community trends across Canada.

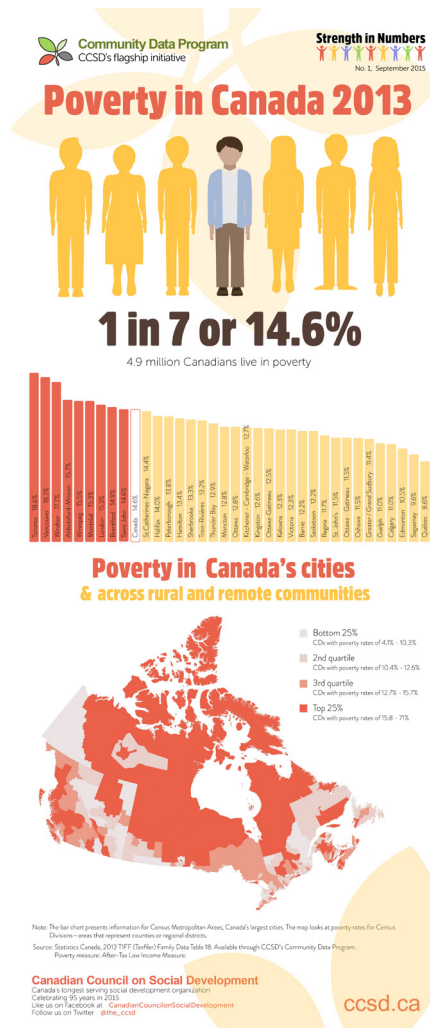
The first three infographics offered focus on poverty and utilize Taxfiler data. These include:

- No.1: Canadians living in poverty, 2013
- No.2: Poverty by Age, 2013
- No.3: Poverty by Family Status, 2013

This series will identify and illuminate significant socioeconomic trends impacting Canadian communities today, while providing a source of critical evidence for sound decision-making and program evaluation.

To access these series of infographics, please go to:

<http://ccsd.ca/index.php/evidence/strength-in-numbers-series>



## What's New...

There's plenty of new data in the [communitydata.ca](http://communitydata.ca) catalogue:

### Taxfiler Data:

- Family Data, 2013
- Neighbourhood Income and Demographics, 2013
- Financial Data and Charitable Donations, 2013
- Seniors Data, 2013
- Migration Estimates, 2012
- Income Inequality and Working Poor, 2011

### Custom NHS Topic-Based Tabulations:

- Immigration and Ethno-cultural Diversity
- Mobility and Migration
- Income and Housing

### General Social Survey- Giving, Volunteering and Participating, 2013

Data information continued on page 2

## What Have You Been Up To?

Have you created something using data from the CCSD Community Data Program? If so, you can show off your work to the network and drive traffic to your website!

Find what others have done with CDP data at <http://communitydata.ca/resources> under **Community Snapshots**.



[facebook.com/CanadianCouncilonSocialDevelopment](https://www.facebook.com/CanadianCouncilonSocialDevelopment)



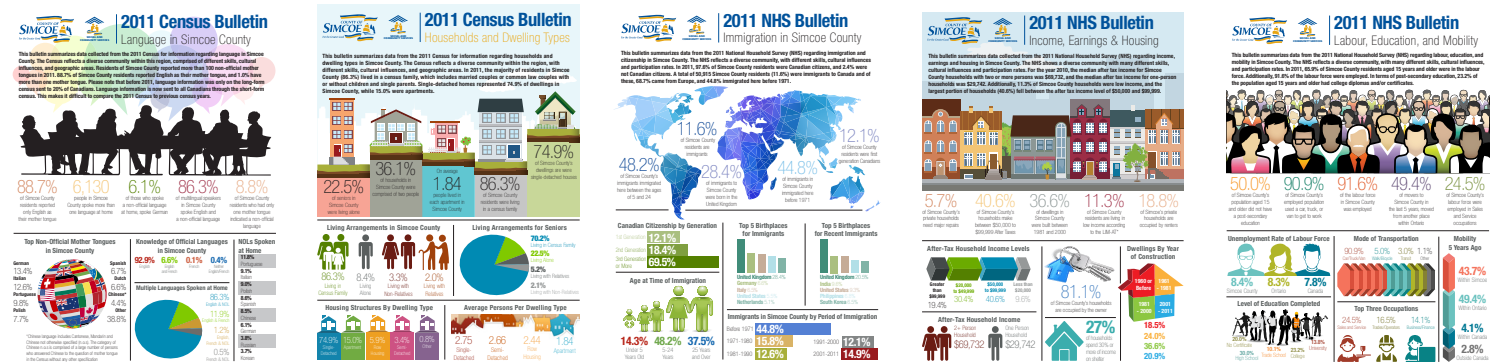
@the\_CCSD

# New Publications from the County of Simcoe

The County of Simcoe is always looking to create resources that will provide insight into the changing community. Recently, topic-based bulletins were created using the 2011 Census and National Household Survey (NHS) data. These include:

- 2011 Census: Language
- 2011 Census: Household and Dwelling Types
- 2011 NHS: Immigration and Citizenship
- 2011 NHS: Labour, Education and Mobility
- 2011 NHS: Income, Earnings and Housing

Resources can be accessed from <http://www.simcoe.ca/scdc>



## Updated Datasets and Tools

These have been updated to their most recent version:

- Building Permits, 2014
- Uniform Crime Reporting Survey, 2013
- Canadian Survey on Disability, 2012
- Canadian Business Counts, 2015
- Enhanced Postal Code Conversion File 2015 (July Updated)

## Upcoming Data

- Canadian Urban Libraries Council, Public Library Statistics, 2013 – 2014
- Employment & Skills Development Canada, Shelter Capacity Report, 2015
- Industry Canada, Insolvency data, 2014
- TransUnion, Credit Report Characteristics, 2015

For more information on the Simcoe County Data Consortium, contact:

Trevor McAlmont, Program Supervisor,  
Children and Community Services, County of Simcoe  
705-722-3132 Ext. 1460 | [trevor.mcalmont@simcoe.ca](mailto:trevor.mcalmont@simcoe.ca)

Lynn Wright, Research Analyst  
Children and Community Services, County of Simcoe  
705-722-3132 Ext. 1142 | [lynn.wright@simcoe.ca](mailto:lynn.wright@simcoe.ca)

