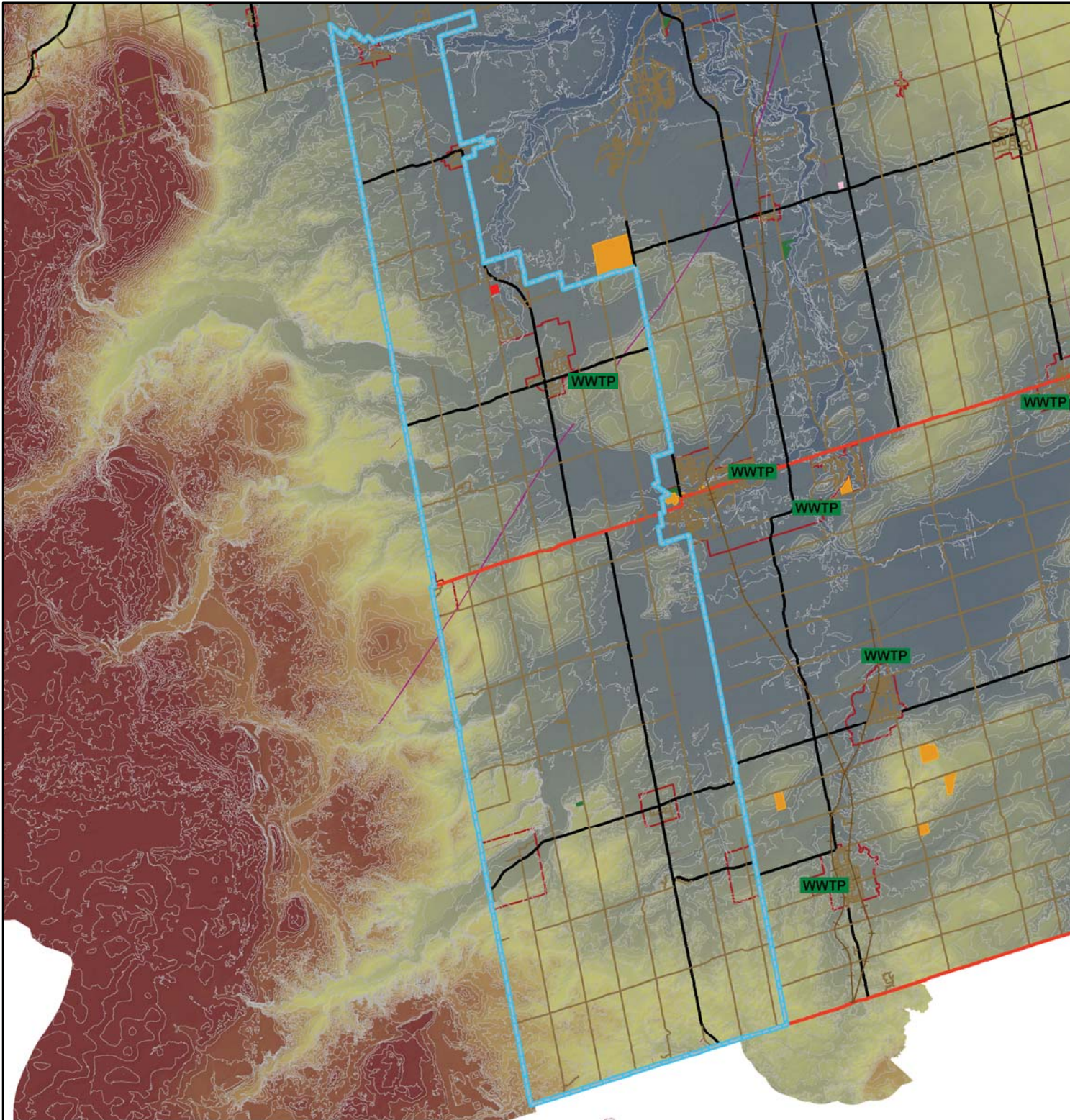
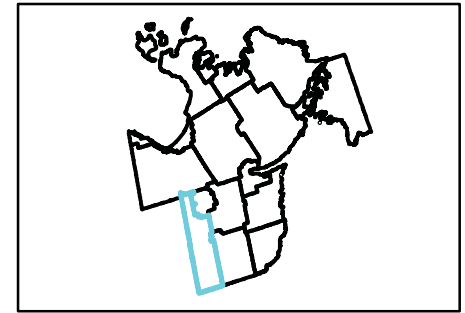


**APPENDIX A-5: COUNTY OF SIMCOE AND SURROUNDING
AREA: MUNICIPAL SANITARY SERVICING
PLANS FIGURES**

SAN-1 Adjala-Tosorontio Wastewater Servicing Plan



Legend

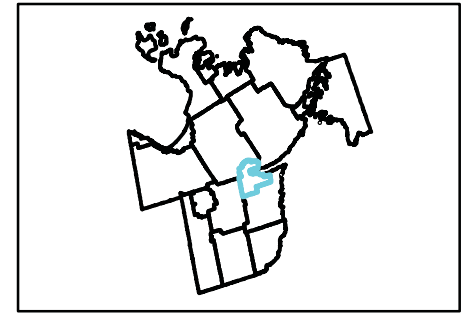
- WWTP Wastewater Treatment Plants
- Railway Active
- Railway Non-Active
- Provincial Highway
- County Road
- Local Road
- Easements
- Open Landfill Site
- Open Stump Dump
- Under Development Landfill Site
- Closed Landfill Site
- Closed Stump Dump
- 2008 Local & Private Waste Disposal Sites
- Municipal Border
- 10m Contours
- Settlement Areas
- High : 542
- Low : 175

1:200,000



This map, either in whole or in part, may not be reproduced without the written authority from the County of Simcoe, Copyright © County of Simcoe Land Information Network Cooperative - LINC 2010
 Produced (in part) under license from: the Cities of Barrie & Orillia, the Ontario Ministry of Natural Resources (Copyright - Queens Printer 2010), ©Verant Enterprises Inc. and its suppliers all rights reserved, and Members of the Ontario Geospatial Data Exchange.
THIS IS NOT A PLAN OF SURVEY.
 For information call (705) 726-9300 or visit www.simcoe.ca

SAN-2 Barrie Wastewater Servicing Plan



Legend

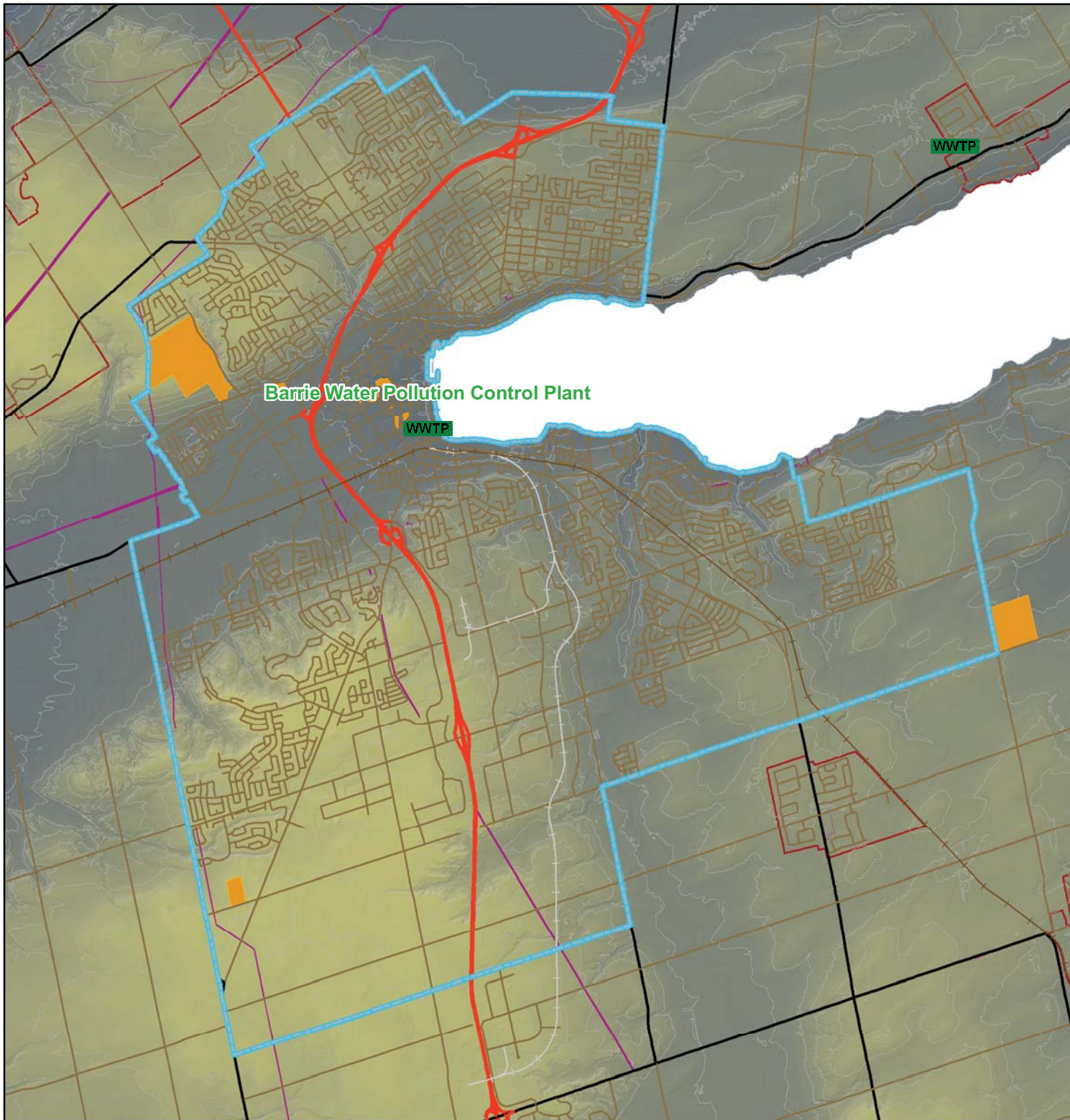
- WWTP Wastewater Treatment Plants
- Railway Active
- Railway Non-Active
- Provincial Highway
- County Road
- Local Road
- Easements
- Open Landfill Site
- Open Stump Dump
- Under Development Landfill Site
- Closed Landfill Site
- Closed Stump Dump
- 2008 Local & Private Waste Disposal Sites
- Municipal Border
- 10m Contours
- Settlement Areas
- High : 542
- Low : 175

1:80,000

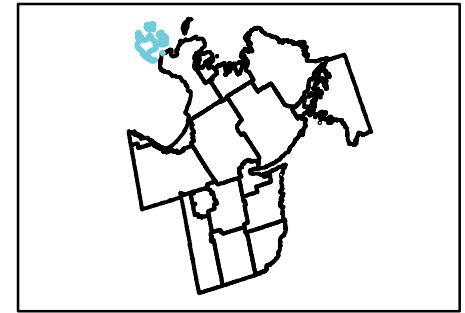
0 0.5 1 2 Kilometers



This map, either in whole or in part, may not be reproduced without the written authority from the County of Simcoe, Copyright © County of Simcoe Land Information Network Cooperative - LINC 2010
Produced (in part) under license from: the Cities of Barrie & Orillia, the Ontario Ministry of Natural Resources (Copyright - Queens Printer 2010), Verant Enterprises Inc, and its suppliers all rights reserved, and Members of the Ontario Geospatial Data Exchange.
THIS IS NOT A PLAN OF SURVEY.
For information call (705) 726-9300 or visit www.simcoe.ca



SAN-3 Beausoleil Wastewater Servicing Plan



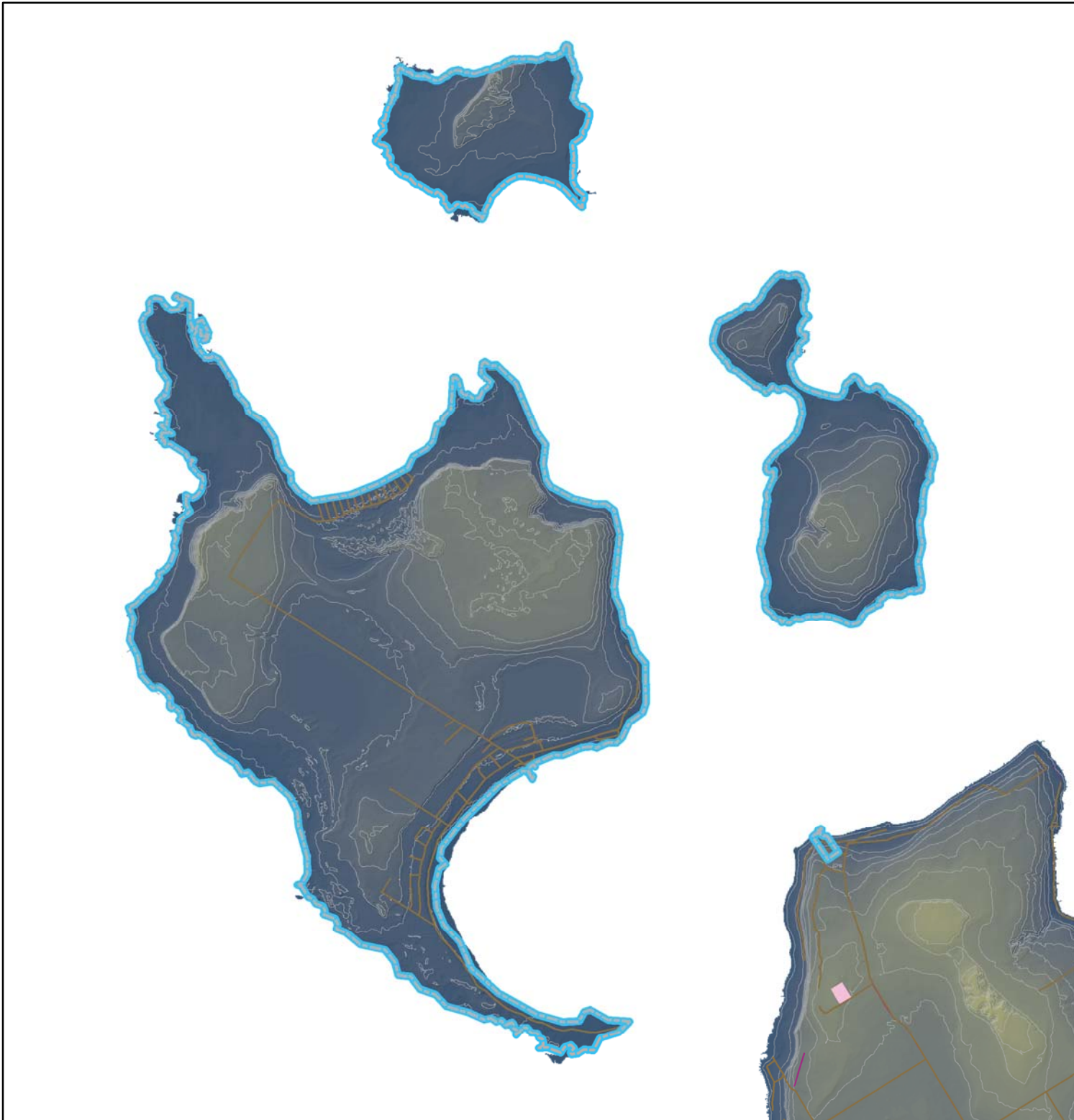
Legend

- WWTTP Wastewater Treatment Plants
- Railway Active
- Railway Non-Active
- Provincial Highway
- County Road
- Local Road
- Easements
- Open Landfill Site
- Open Stump Dump
- Under Development Landfill Site
- Closed Landfill Site
- Closed Stump Dump
- 2008 Local & Private Waste Disposal Sites
- Municipal Border
- 10m Contours
- Settlement Areas
- High : 542
- Low : 175

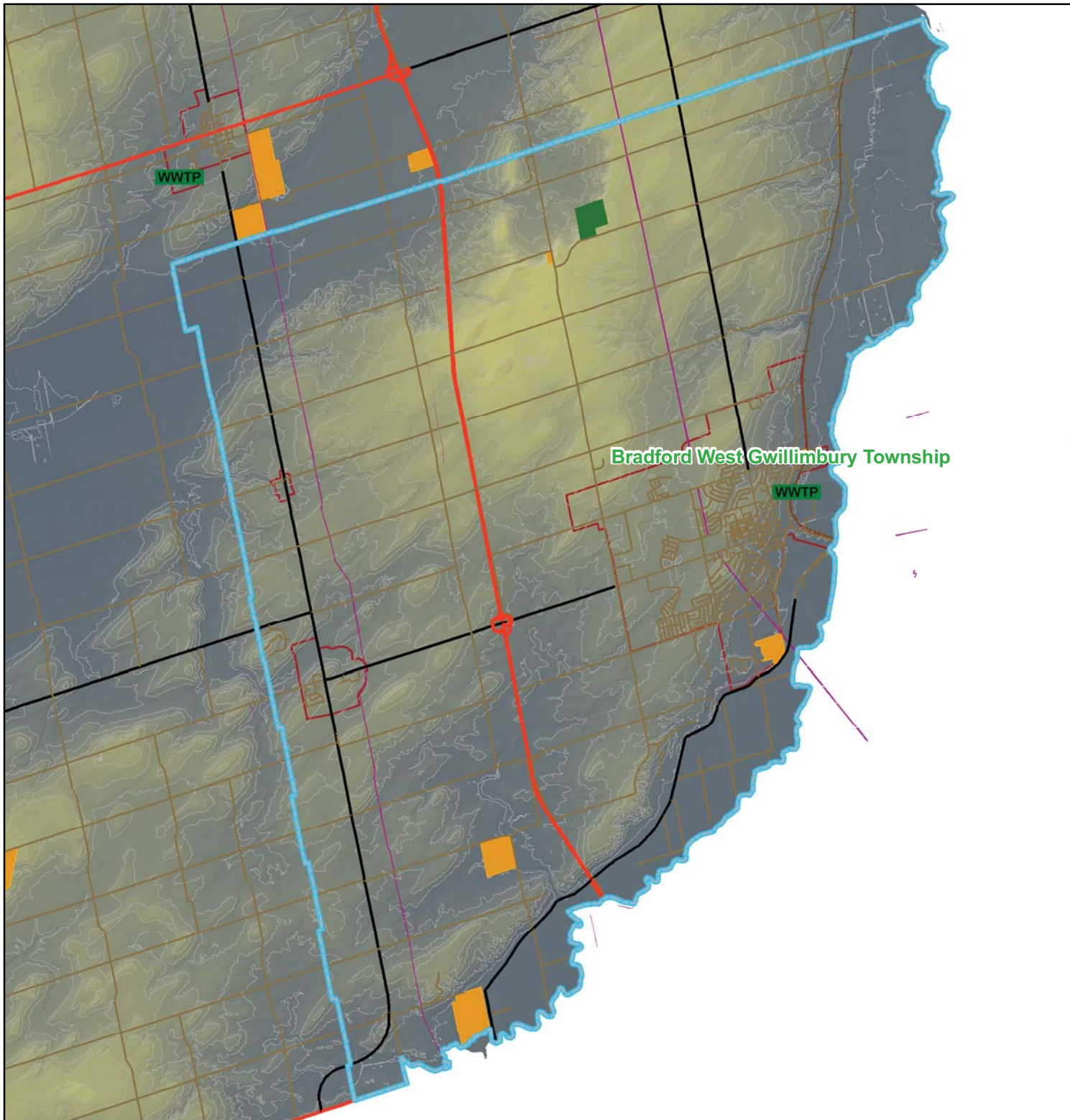
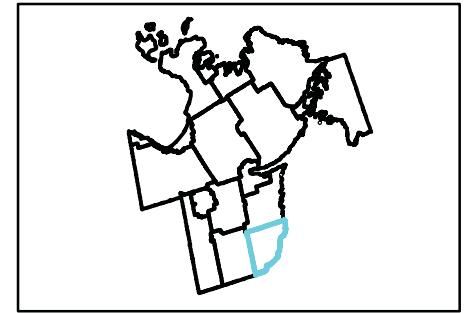
1:80,000



This map, either in whole or in part, may not be reproduced without the written authority from the County of Simcoe, Copyright © County of Simcoe Land Information Network Cooperative - LINC 2010
Produced (in part) under license from: the Cities of Barrie & Orillia, the Ontario Ministry of Natural Resources (Copyright - Queens Printer 2010), ©Verant Enterprises Inc. and its suppliers all rights reserved, and Members of the Ontario Geospatial Data Exchange.
THIS IS NOT A PLAN OF SURVEY.
For information call (705) 726-9300 or visit www.simcoe.ca



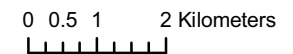
SAN-4 Bradford West Gwillimbury Wastewater Servicing Plan



Legend

- WWTP Wastewater Treatment Plants
- Railway Active
- Railway Non-Active
- Provincial Highway
- County Road
- Local Road
- Easements
- Open Landfill Site
- Open Stump Dump
- Under Development Landfill Site
- Closed Landfill Site
- Closed Stump Dump
- 2008 Local & Private Waste Disposal Sites
- Municipal Border
- 10m Contours
- Settlement Areas
- High : 542.484
- Low : 174.828

1:110,000



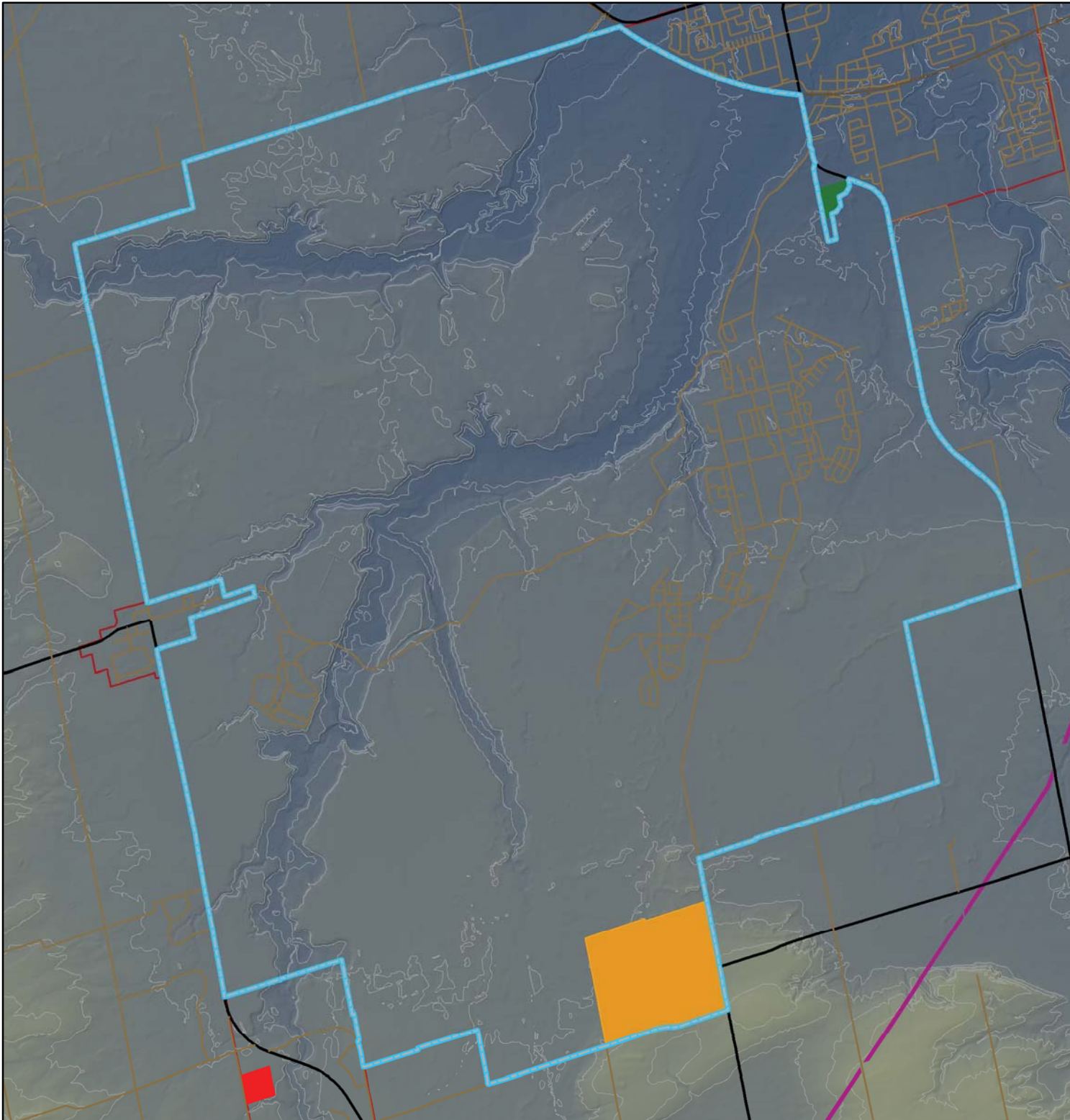
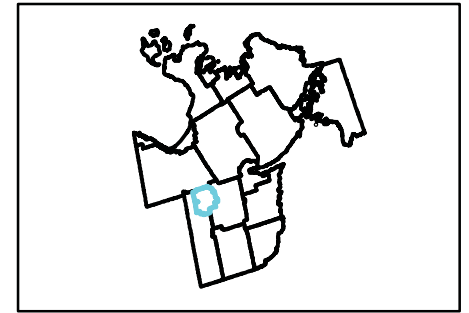
This map, either in whole or in part, may not be reproduced without the written authority from the County of Simcoe, Copyright © County of Simcoe Land Information Network Cooperative - LINC 2010

Produced (in part) under license from: the Cities of Barrie & Orillia, the Ontario Ministry of Natural Resources (Copyright © Queens Printer 2010), ©Verant Enterprises Inc. and its suppliers all rights reserved, and Members of the Ontario Geospatial Data Exchange.

THIS IS NOT A PLAN OF SURVEY.

For information call (705) 726-9300 or visit www.simcoe.ca

SAN-5 CFB Borden Wastewater Servicing Plan



Legend

- WWTTP Wastewater Treatment Plants
- Railway Active
- Railway Non-Active
- Provincial Highway
- County Road
- Local Road
- Easements
- Open Landfill Site
- Open Stump Dump
- Under Development Landfill Site
- Closed Landfill Site
- Closed Stump Dump
- 2008 Local & Private Waste Disposal Sites
- Municipal Border
- 10m Contours
- Settlement Areas
- High : 542
- Low : 175

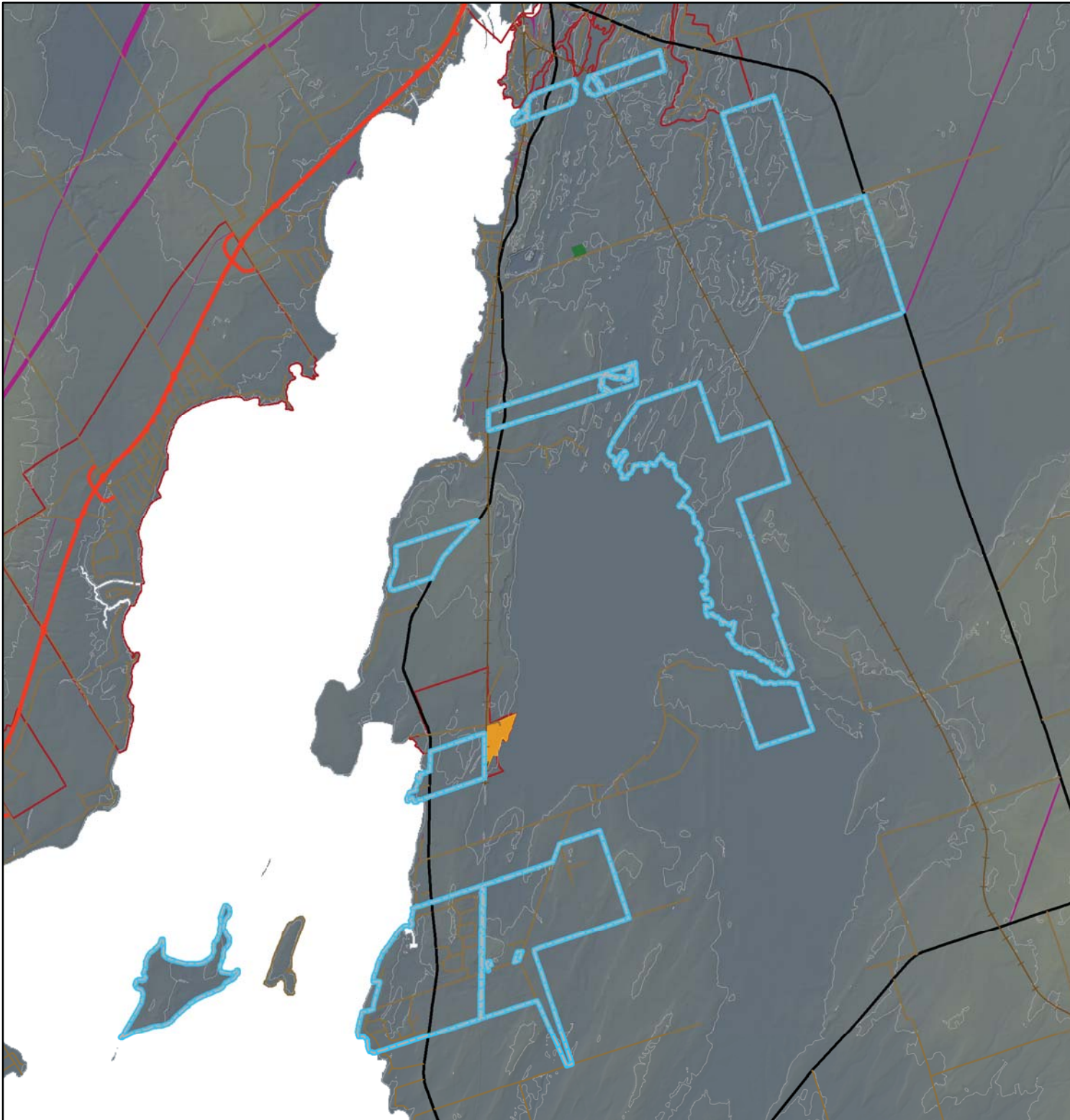
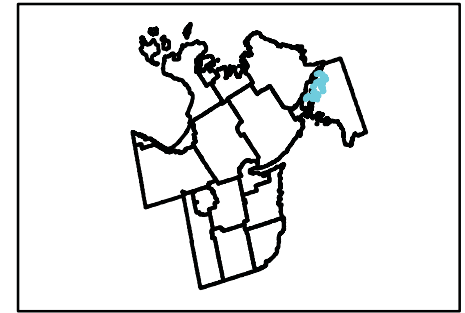
1:60,000

0 0.3 0.6 1.2 Kilometers



This map, either in whole or in part, may not be reproduced without the written authority from the County of Simcoe, Copyright © County of Simcoe Land Information Network Cooperative - LINC 2010
Produced (in part) under license from: the Cities of Barrie & Orillia, the Ontario Ministry of Natural Resources (Copyright - Queens Printer 2010), Overnet Enterprises Inc. and its suppliers all rights reserved, and Members of the Ontario Geospatial Data Exchange.
THIS IS NOT A PLAN OF SURVEY.
For information call (705) 726-9300 or visit www.simcoe.ca

SAN-6 Chippewas of First Nation Wastewater Servicing Plan



Legend

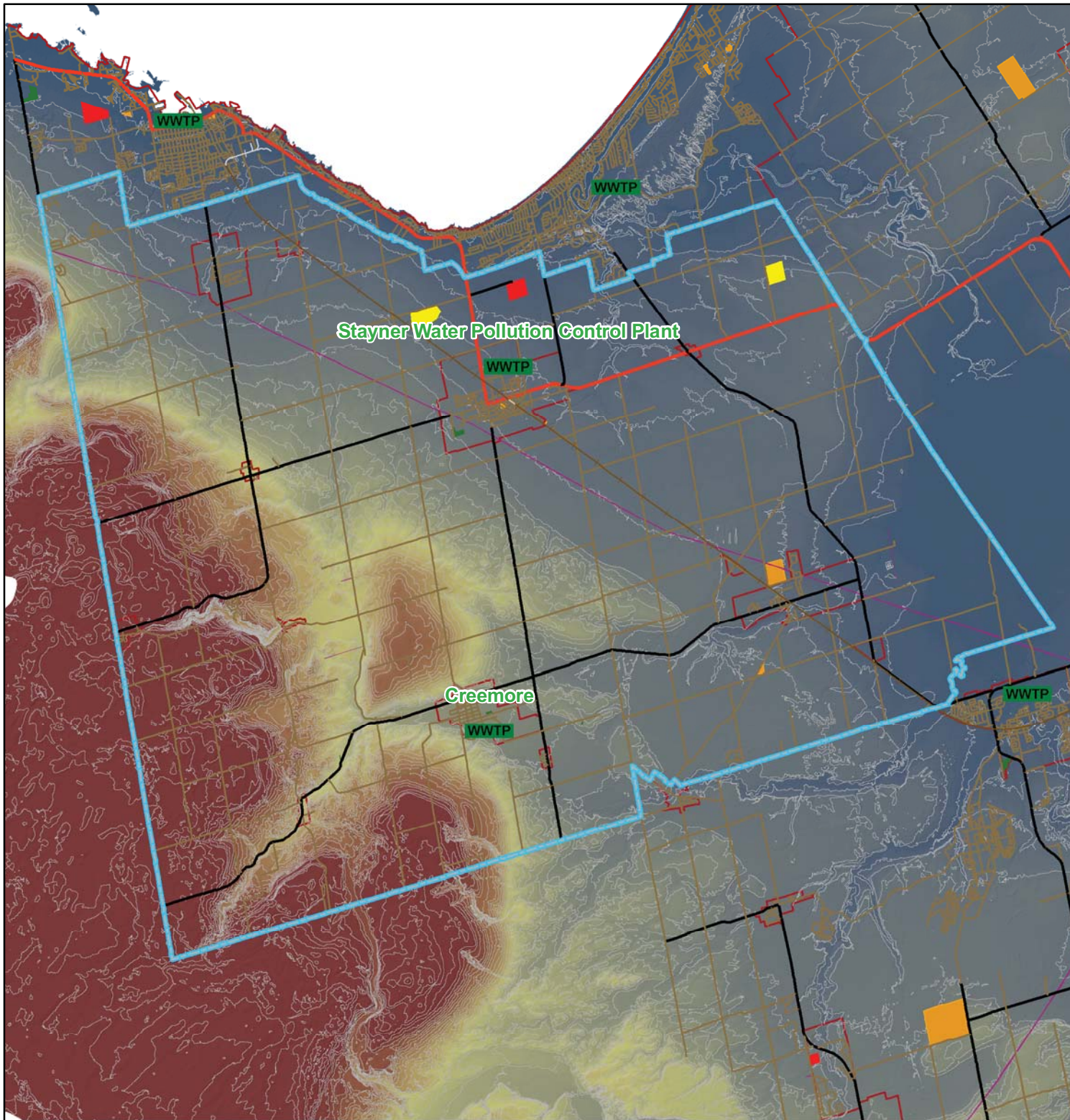
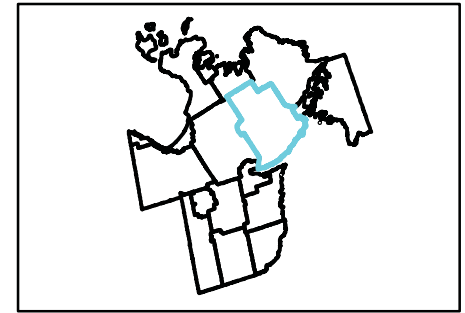
- WWTTP Wastewater Treatment Plants
- Railway Active
- Railway Non-Active
- Provincial Highway
- County Road
- Local Road
- Easements
- Open Landfill Site
- Open Stump Dump
- Under Development Landfill Site
- Closed Landfill Site
- Closed Stump Dump
- 2008 Local & Private Waste Disposal Sites
- Municipal Border
- 10m Contours
- Settlement Areas
- High : 542
- Low : 175

1:60,000



This map, either in whole or in part, may not be reproduced without the written authority from the County of Simcoe, Copyright © County of Simcoe Land Information Network Cooperative - LINC 2010
Produced (in part) under license from: the Cities of Barrie & Orillia, the Ontario Ministry of Natural Resources (Copyright - Queens Printer 2010), ©Verant Enterprises Inc., and its suppliers all rights reserved, and Members of the Ontario Geospatial Data Exchange.
THIS IS NOT A PLAN OF SURVEY.
For information call (705) 726-9300 or visit www.simcoe.ca

SAN-7 Clearview Wastewater Servicing Plan




Legend

- WWTP Wastewater Treatment Plants
- Railway Active
- Railway Non-Active
- Provincial Highway
- County Road
- Local Road
- Easements
- Open Landfill Site
- Open Stump Dump
- Under Development Landfill Site
- Closed Landfill Site
- Closed Stump Dump
- 2008 Local & Private Waste Disposal Sites
- Municipal Border
- 10m Contours
- Settlement Areas
- High : 542
- Low : 175

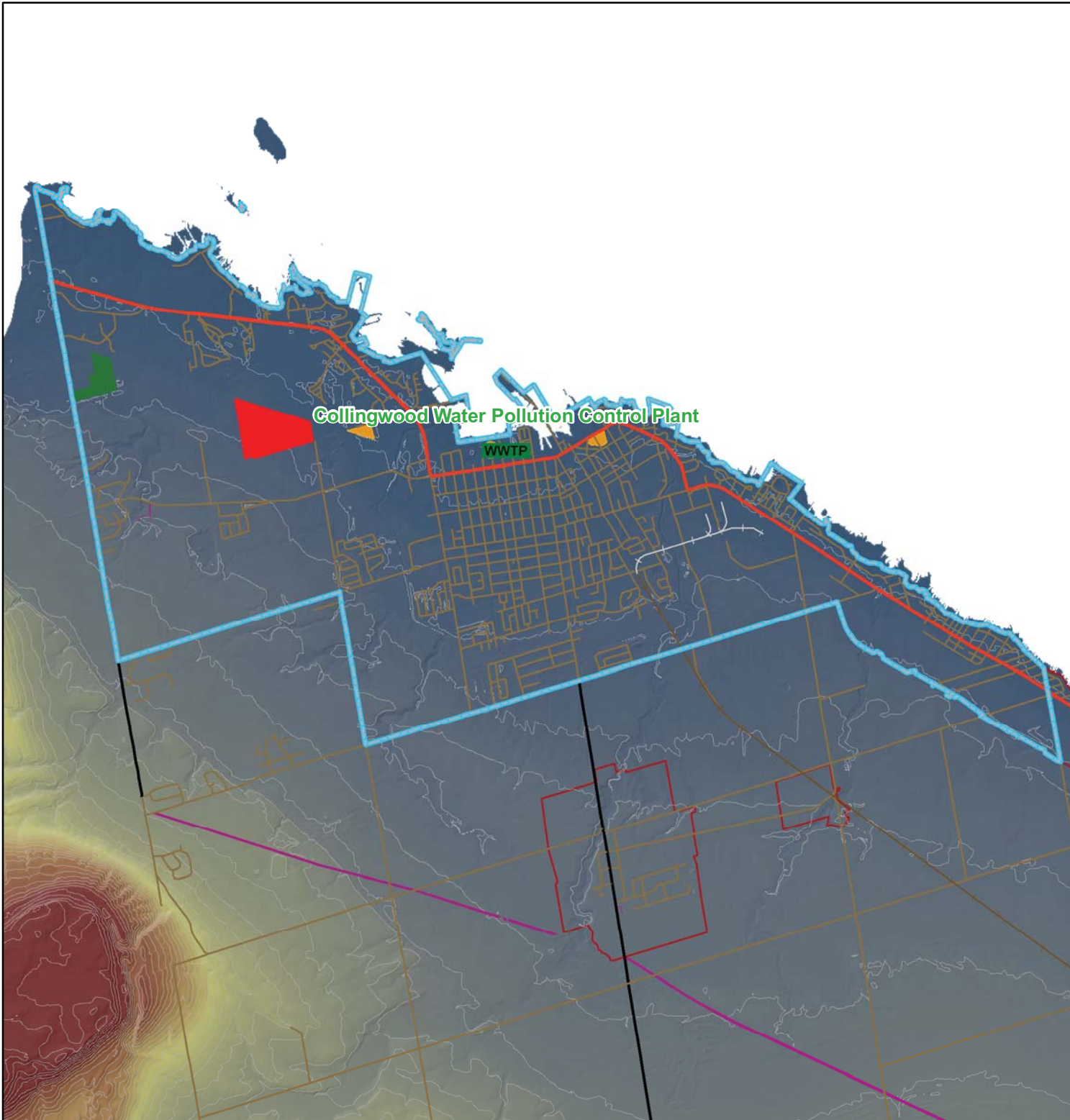
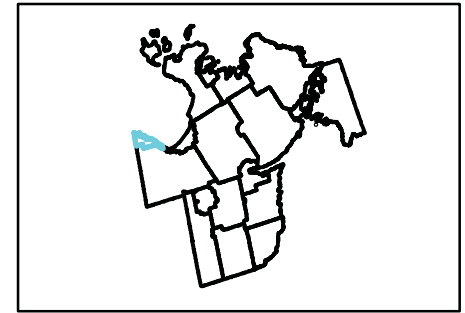
1:180,000

0 1.25 2.5 5 Kilometers




 This map, either in whole or in part, may not be reproduced without the written authority from the County of Simcoe, Copyright © County of Simcoe Land Information Network Cooperative - LINC 2010.
 Produced (in part) under license from: the Cities of Barrie & Orillia, the Ontario Ministry of Natural Resources (Copyright - Queens Printer 2010), Verant Enterprises Inc, and its suppliers all rights reserved, and Members of the Ontario Geospatial Data Exchange.
 THIS IS NOT A PLAN OF SURVEY.
 For information call (705) 726-9300 or visit www.simcoe.ca

SAN-8 Collingwood Wastewater Servicing Plan



Legend

- WWTP** Wastewater Treatment Plants
- Railway Active
- Railway Non-Active
- Provincial Highway
- County Road
- Local Road
- Easements
- Open Landfill Site
- Open Stump Dump
- Under Development Landfill Site
- Closed Landfill Site
- Closed Stump Dump
- 2008 Local & Private Waste Disposal Sites
- Municipal Border
- 10m Contours
- Settlement Areas
- High : 542
- Low : 175

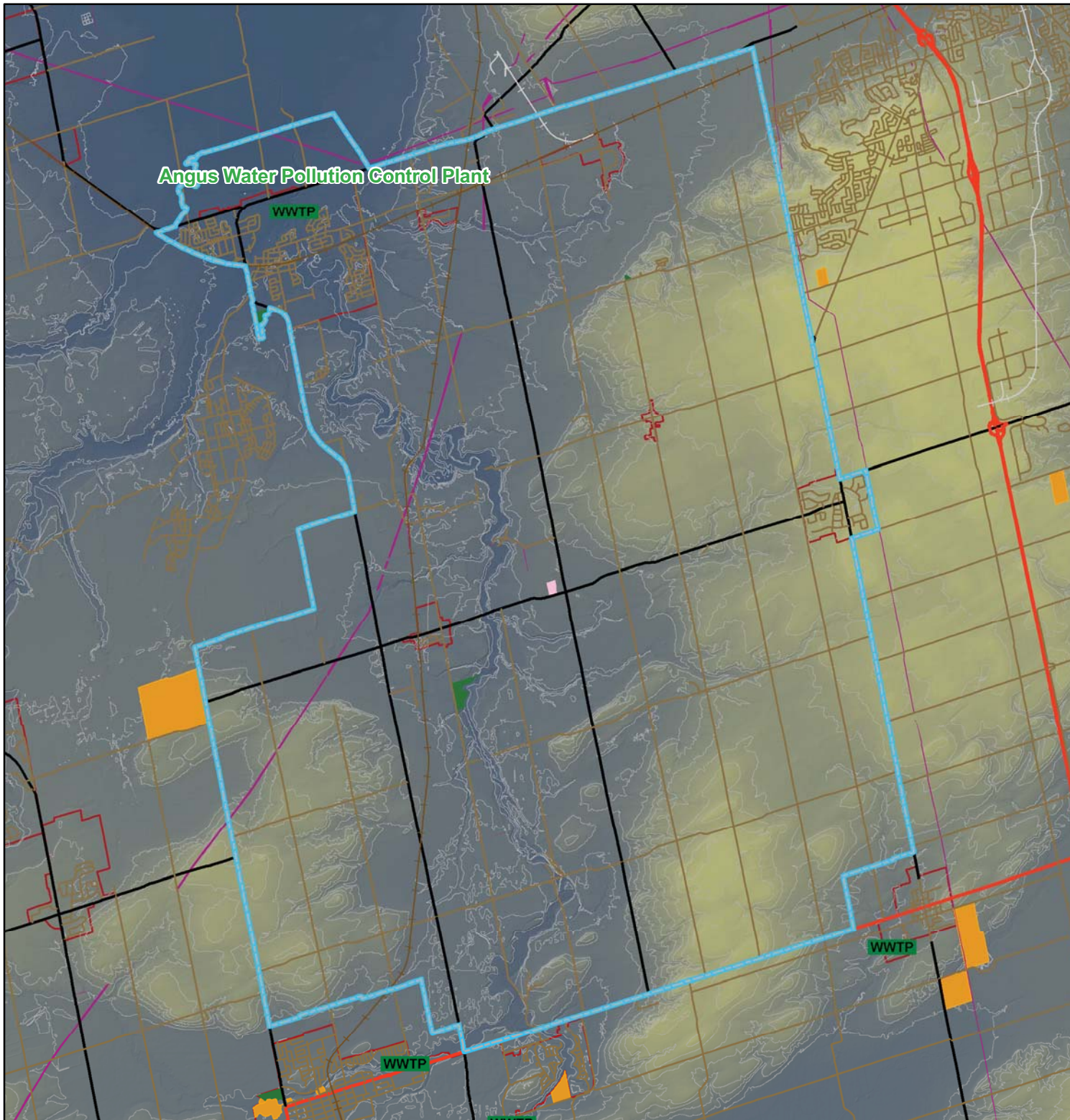
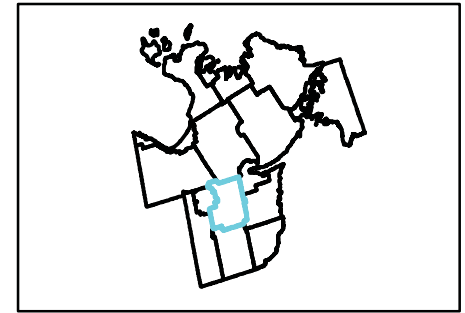
1:65,000

0 0.45 0.9 1.8 Kilometers



This map, either in whole or in part, may not be reproduced without the written authority from the County of Simcoe, Copyright © County of Simcoe Land Information Network Cooperative - LINC 2010
Produced (in part) under license from: the Cities of Barrie & Orillia, the Ontario Ministry of Natural Resources (Copyright - Queens Printer 2010), ©Verant Enterprises Inc. and its suppliers all rights reserved, and Members of the Ontario Geospatial Data Exchange.
THIS IS NOT A PLAN OF SURVEY.
For information call (705) 726-9300 or visit www.simcoe.ca

SAN-9 Essa Wastewater Servicing Plan



Legend

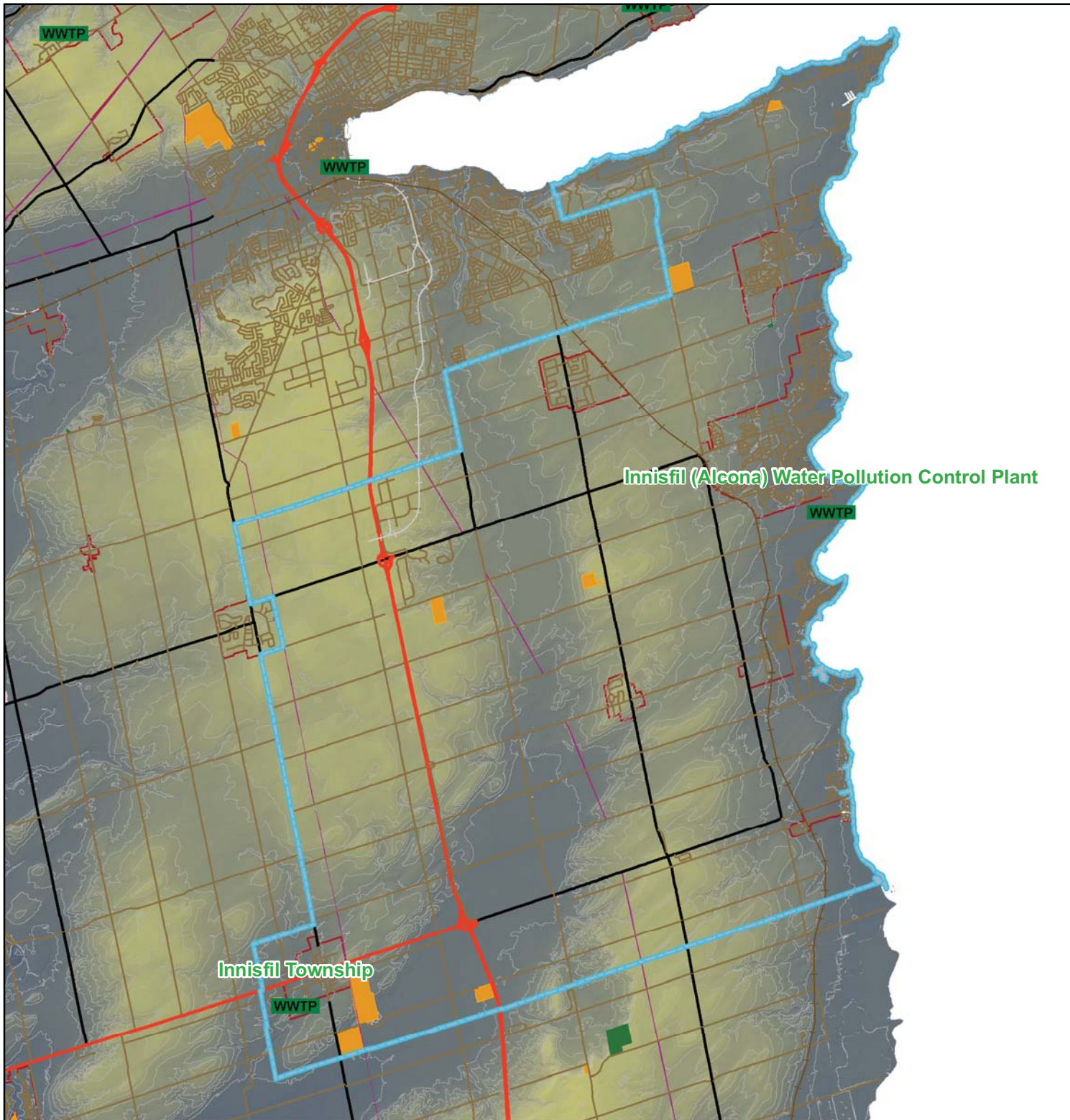
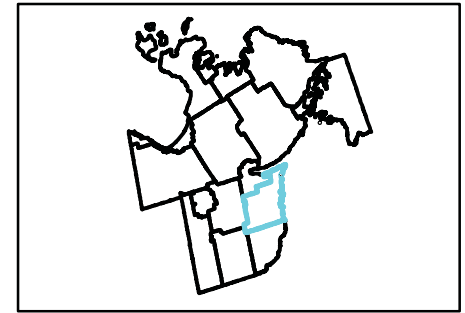
- WWTP Wastewater Treatment Plants
- Railway Active
- Railway Non-Active
- Provincial Highway
- County Road
- Local Road
- Easements
- Open Landfill Site
- Open Stump Dump
- Under Development Landfill Site
- Closed Landfill Site
- Closed Stump Dump
- 2008 Local & Private Waste Disposal Sites
- Municipal Border
- 10m Contours
- Settlement Areas
- High : 542
- Low : 175

1:120,000



This map, either in whole or in part, may not be reproduced without the written authority from the County of Simcoe, Copyright © County of Simcoe Land Information Network Cooperative - LINC 2010. Produced (in part) under license from: the Cities of Barrie & Orillia, the Ontario Ministry of Natural Resources (Copyright - Queens Printer 2010), ©Verant Enterprises Inc. and its suppliers all rights reserved, and Members of the Ontario Geospatial Data Exchange. THIS IS NOT A PLAN OF SURVEY. For information call (705) 726-9300 or visit www.simcoe.ca

SAN-10 Innisfil Wastewater Servicing Plan



Legend

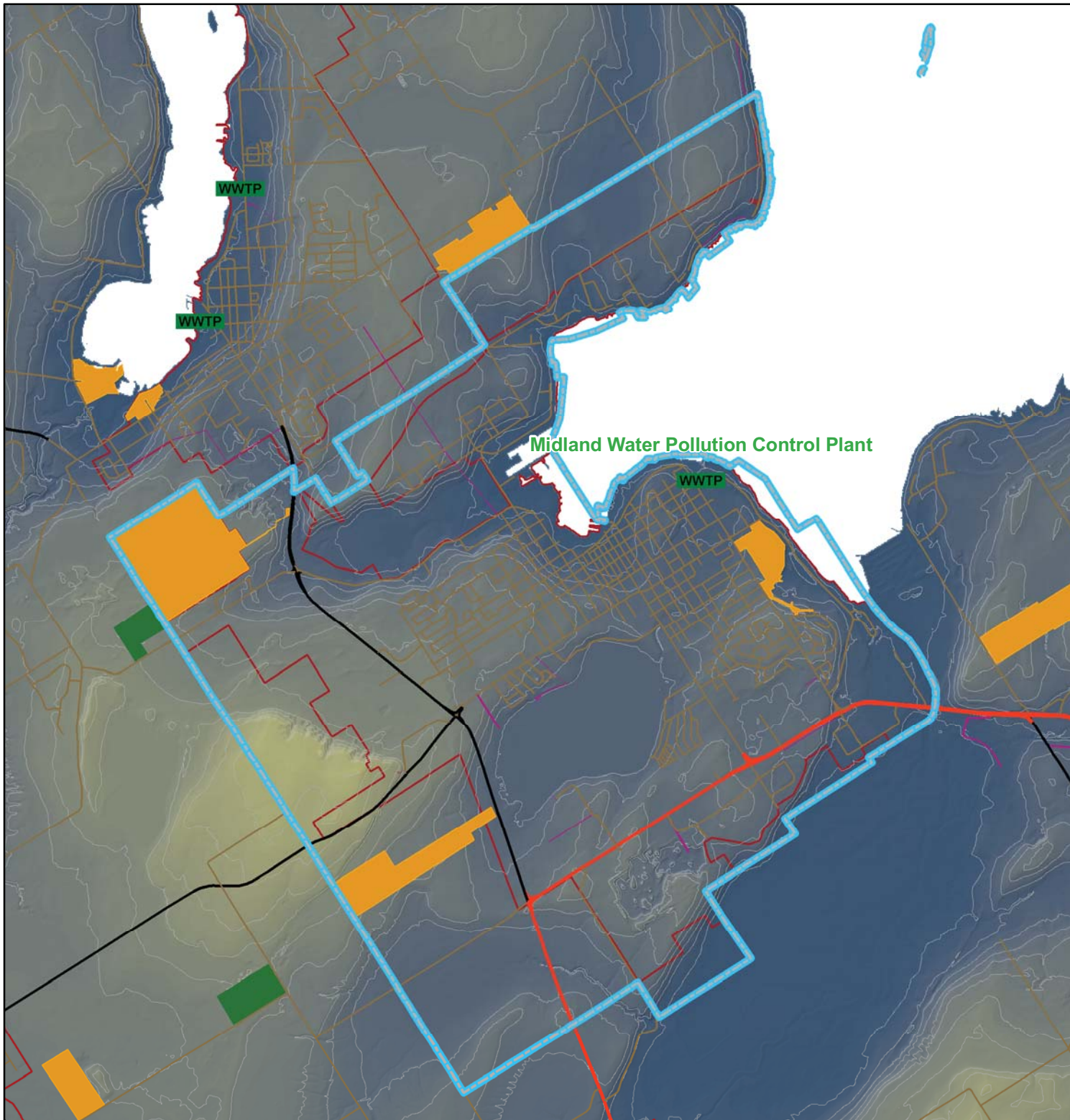
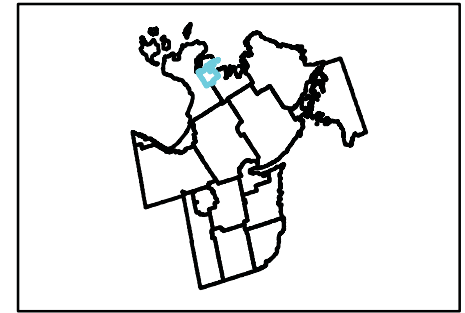
- WWTP Wastewater Treatment Plants
- Railway Active
- Railway Non-Active
- Provincial Highway
- County Road
- Local Road
- Easements
- Open Landfill Site
- Open Stump Dump
- Under Development Landfill Site
- Closed Landfill Site
- Closed Stump Dump
- 2008 Local & Private Waste Disposal Sites
- Municipal Border
- 10m Contours
- Settlement Areas
- High : 542
- Low : 175

1:140,000



This map, either in whole or in part, may not be reproduced without the written authority from the County of Simcoe, Copyright © County of Simcoe Land Information Network Cooperative - LINC 2010
Produced (in part) under license from: the Cities of Barrie & Orillia, the Ontario Ministry of Natural Resources (Copyright - Queens Printer 2010), ©Verant Enterprises Inc. and its suppliers all rights reserved, and Members of the Ontario Geospatial Data Exchange.
THIS IS NOT A PLAN OF SURVEY.
For information call (705) 726-9300 or visit www.simcoe.ca

SAN-11 Midland Wastewater Servicing Plan



Legend

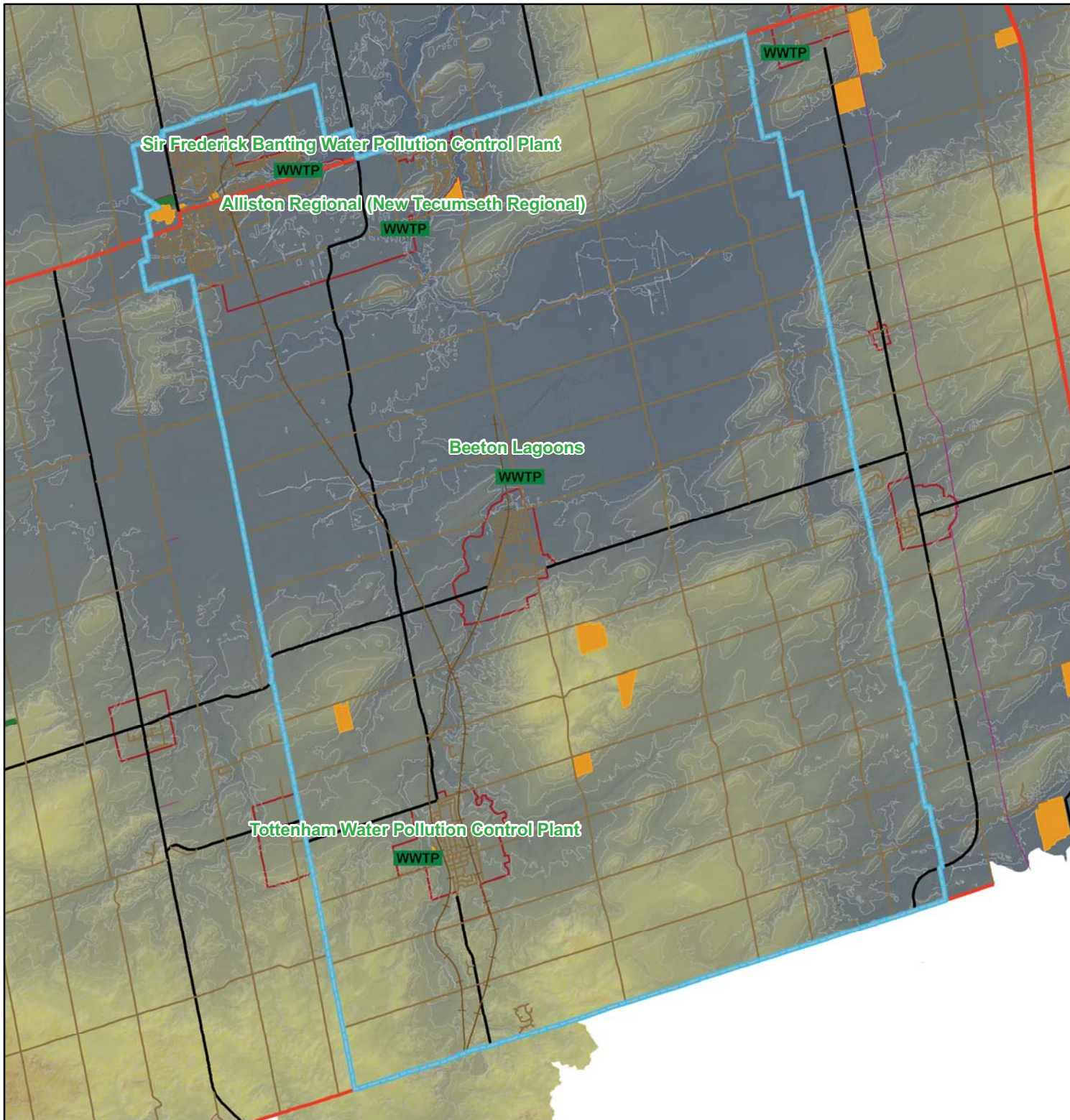
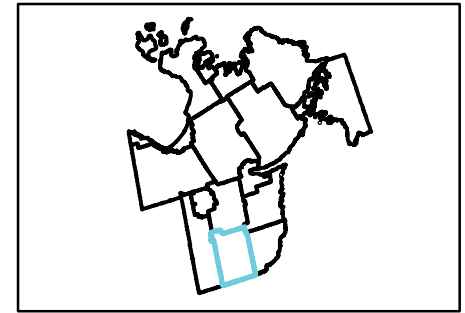
- WWTP Wastewater Treatment Plants
- Railway Active
- Railway Non-Active
- Provincial Highway
- County Road
- Local Road
- Easements
- Open Landfill Site
- Open Stump Dump
- Under Development Landfill Site
- Closed Landfill Site
- Closed Stump Dump
- 2008 Local & Private Waste Disposal Sites
- Municipal Border
- 10m Contours
- Settlement Areas
- High : 542
- Low : 175

1:55,000



This map, either in whole or in part, may not be reproduced without the written authority from the County of Simcoe, Copyright © County of Simcoe Land Information Network Cooperative - LINC 2010
Produced (in part) under license from: the Cities of Barrie & Orillia, the Ontario Ministry of Natural Resources (Copyright - Queens Printer 2010), ©Verant Enterprises Inc. and its suppliers all rights reserved, and Members of the Ontario Geospatial Data Exchange.
THIS IS NOT A PLAN OF SURVEY.
For information call (705) 726-9300 or visit www.simcoe.ca

SAN-12 New Tecumseth Wastewater Servicing Plan



Legend

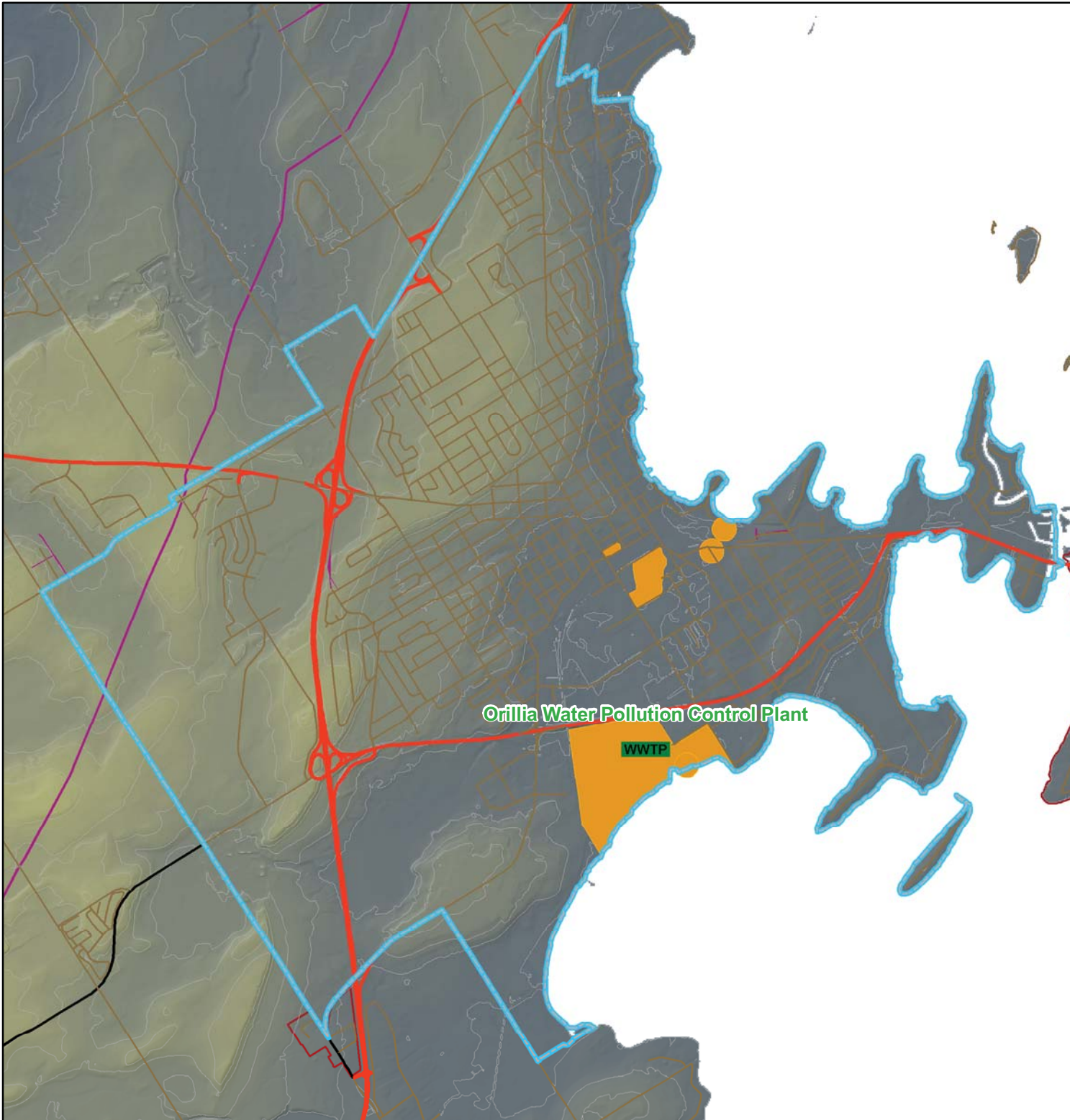
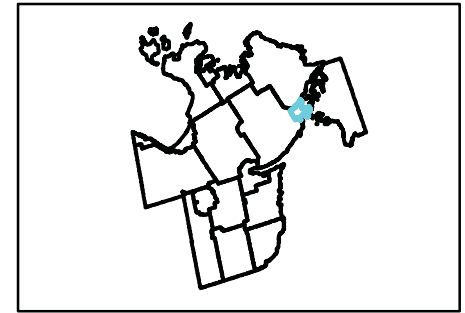
- WWTP Wastewater Treatment Plants
- Railway Active
- Railway Non-Active
- Provincial Highway
- County Road
- Local Road
- Easements
- Open Landfill Site
- Open Stump Dump
- Under Development Landfill Site
- Closed Landfill Site
- Closed Stump Dump
- 2008 Local & Private Waste Disposal Sites
- Municipal Border
- 10m Contours
- Settlement Areas
- High : 542
- Low : 175

1:120,000



This map, either in whole or in part, may not be reproduced without the written authority from the County of Simcoe, Copyright © County of Simcoe Land Information Network Cooperative - LINC 2010. Produced (in part) under license from: the Cities of Barrie & Orillia, the Ontario Ministry of Natural Resources (Copyright - Queens Printer 2010), ©Verant Enterprises Inc. and its suppliers all rights reserved, and Members of the Ontario Geospatial Data Exchange. THIS IS NOT A PLAN OF SURVEY. For information call (705) 726-9300 or visit www.simcoe.ca

SAN-13 Orillia Wastewater Servicing Plan



Legend

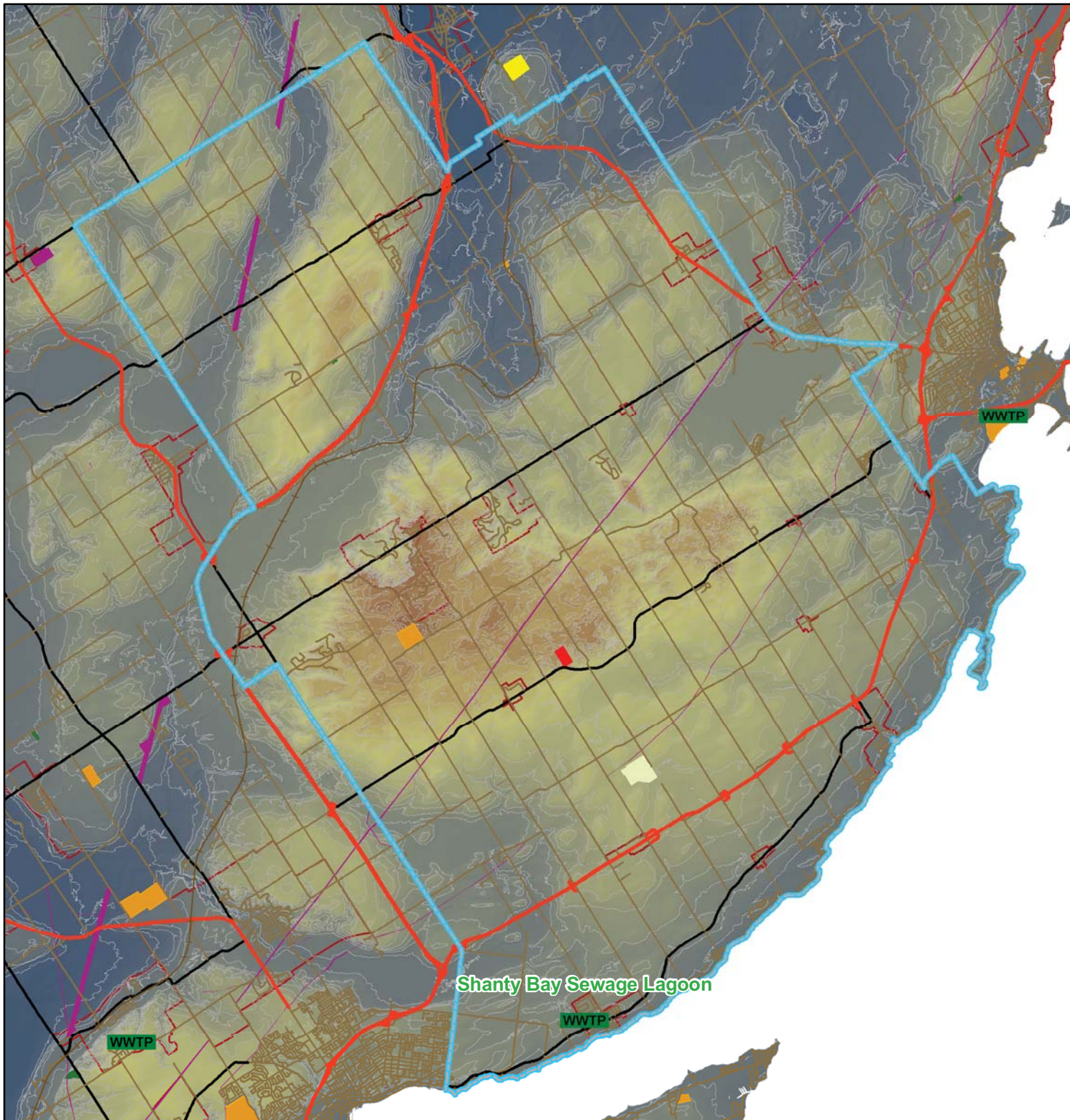
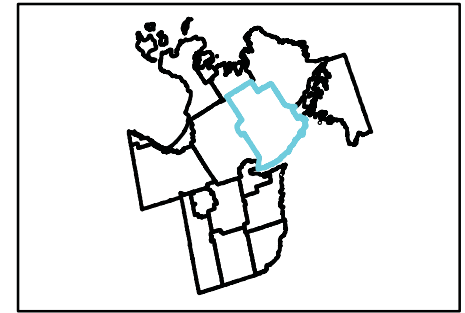
- WWTP Wastewater Treatment Plants
- Railway Active
- Railway Non-Active
- Provincial Highway
- County Road
- Local Road
- Easements
- Open Landfill Site
- Open Stump Dump
- Under Development Landfill Site
- Closed Landfill Site
- Closed Stump Dump
- 2008 Local & Private Waste Disposal Sites
- Municipal Border
- 10m Contours
- Settlement Areas
- High : 542
- Low : 175

1:45,000

0.15.3 0.6 Kilometers



SAN-14 Oro-Medonte Wastewater Servicing Plan



Legend

- WWTP Wastewater Treatment Plants
- Railway Active
- Railway Non-Active
- Provincial Highway
- County Road
- Local Road
- Easements
- Open Landfill Site
- Open Stump Dump
- Under Development Landfill Site
- Closed Landfill Site
- Closed Stump Dump
- 2008 Local & Private Waste Disposal Sites
- Municipal Border
- 10m Contours
- Settlement Areas
- High : 542
- Low : 175

1:180,000



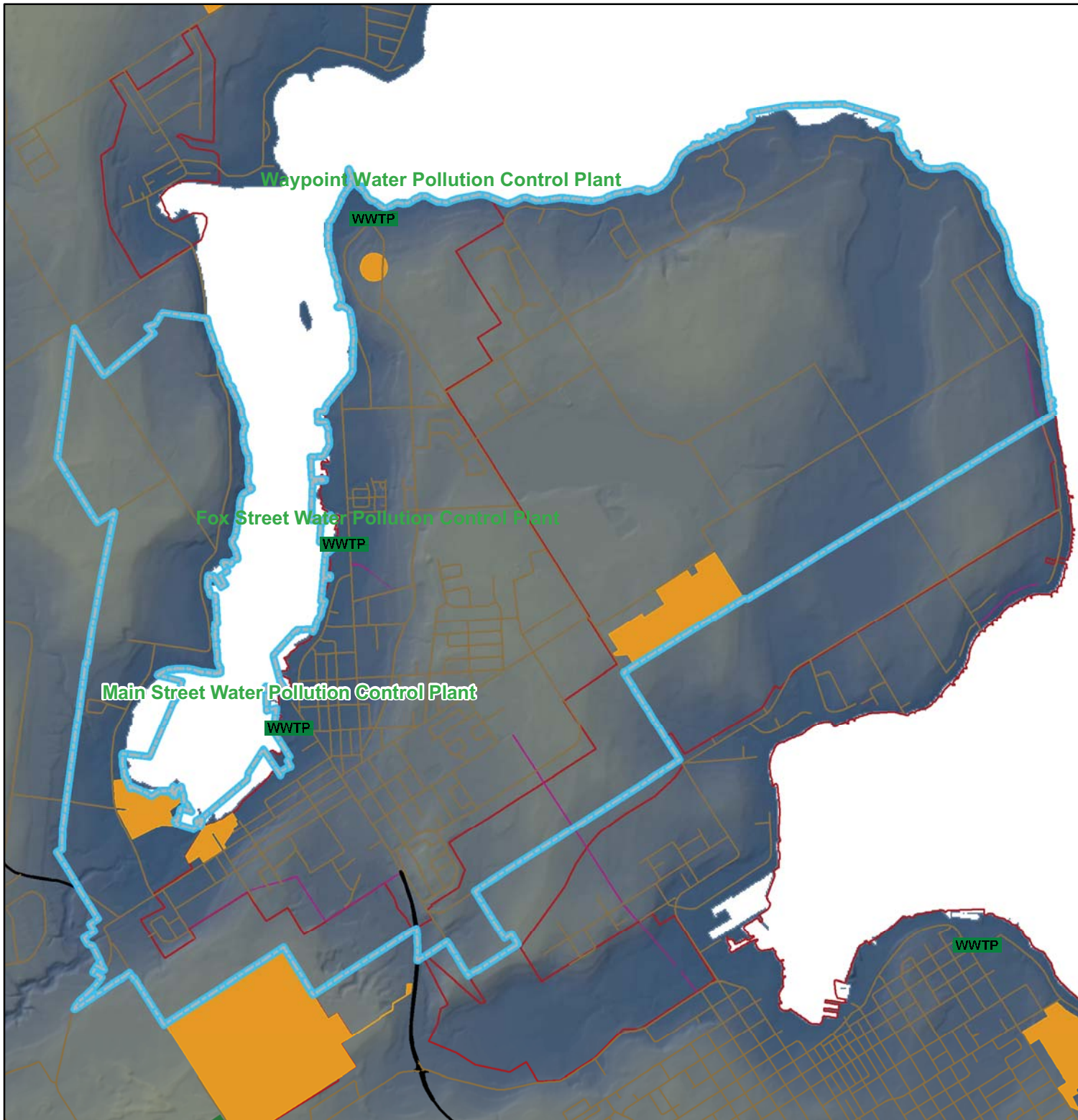
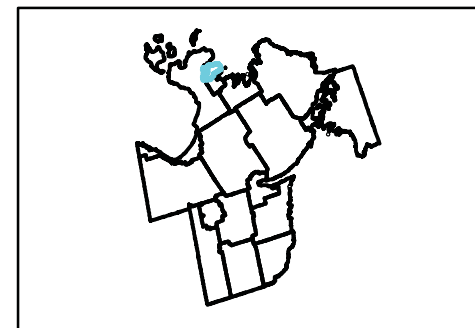
This map, either in whole or in part, may not be reproduced without the written authority from the County of Simcoe, Copyright © County of Simcoe Land Information Network Cooperative - LINC 2010

Produced (in part) under license from: the Cities of Barrie & Orillia, the Ontario Ministry of Natural Resources (Copyright - Queens Printer 2010), ©Verant Enterprises Inc. and its suppliers all rights reserved, and Members of the Ontario Geospatial Data Exchange.

THIS IS NOT A PLAN OF SURVEY.

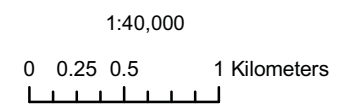
For information call (705) 726-9300 or visit www.simcoe.ca

SAN-15 Penetanguishene Wastewater Servicing Plan



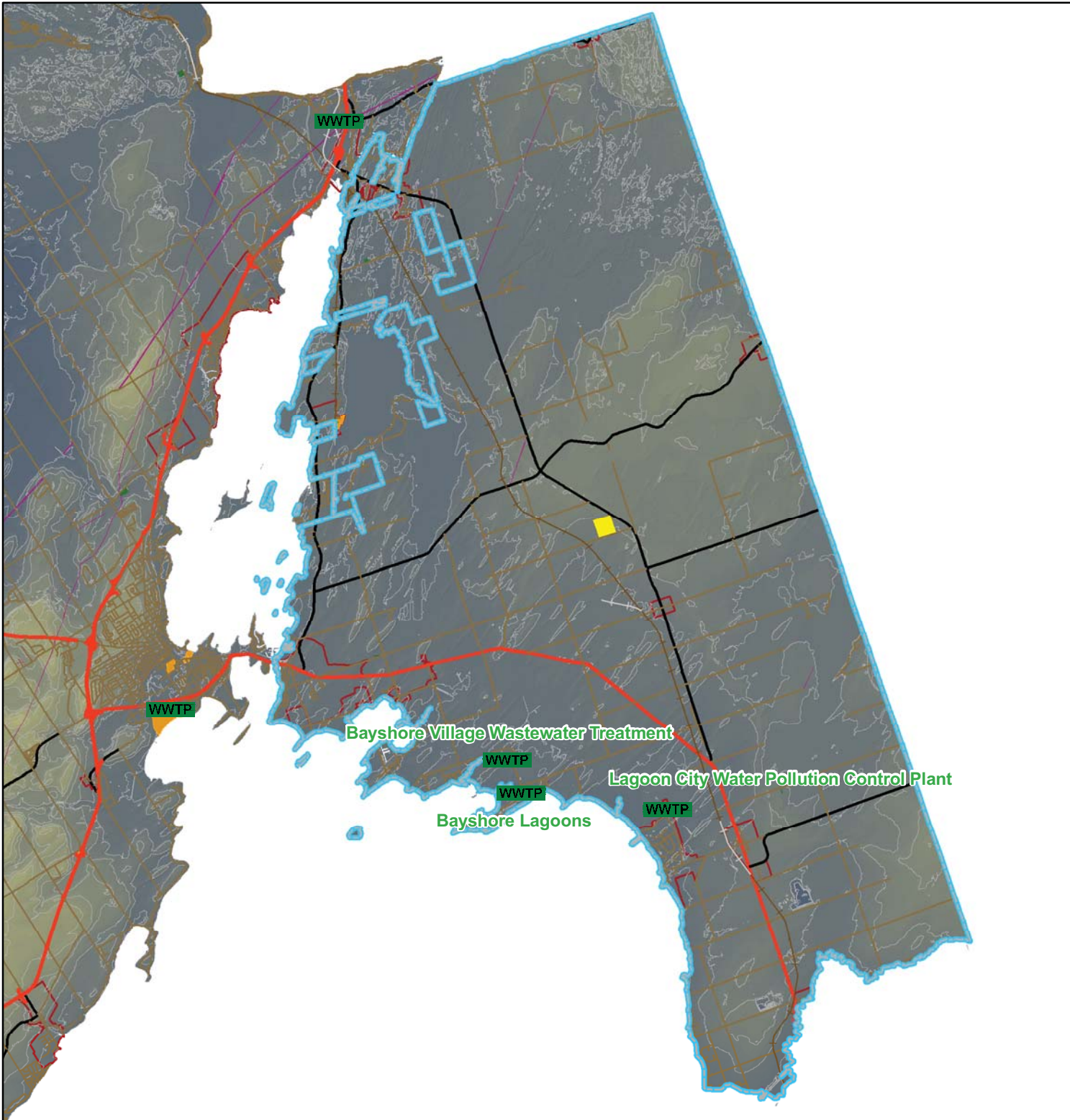
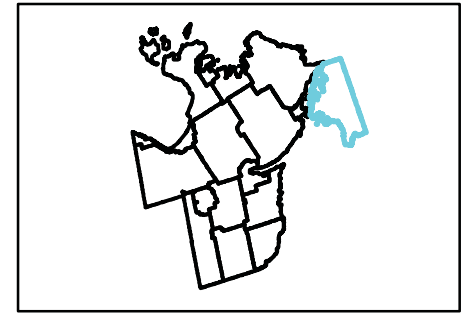
Legend

- WWTP Wastewater Treatment Plants
- Railway Active
- Railway Non-Active
- Provincial Highway
- County Road
- Local Road
- Easements
- Open Landfill Site
- Open Stump Dump
- Under Development Landfill Site
- Closed Landfill Site
- Closed Stump Dump
- 2008 Local & Private Waste Disposal Sites
- Municipal Border
- 10m Contours
- Settlement Areas
- High : 542
- Low : 175



This map, either in whole or in part, may not be reproduced without the written authority from the County of Simcoe, Copyright © County of Simcoe Land Information Network Cooperative - LINC 2010. Produced (in part) under license from: the Cities of Barrie & Orillia, the Ontario Ministry of Natural Resources (Copyright © Queens Printer 2010), ©Verant Enterprises Inc. and its suppliers all rights reserved, and Members of the Ontario Geospatial Data Exchange. THIS IS NOT A PLAN OF SURVEY. For information call (705) 726-9300 or visit www.simcoe.ca

SAN-16 Ramara Wastewater Servicing Plan



Legend

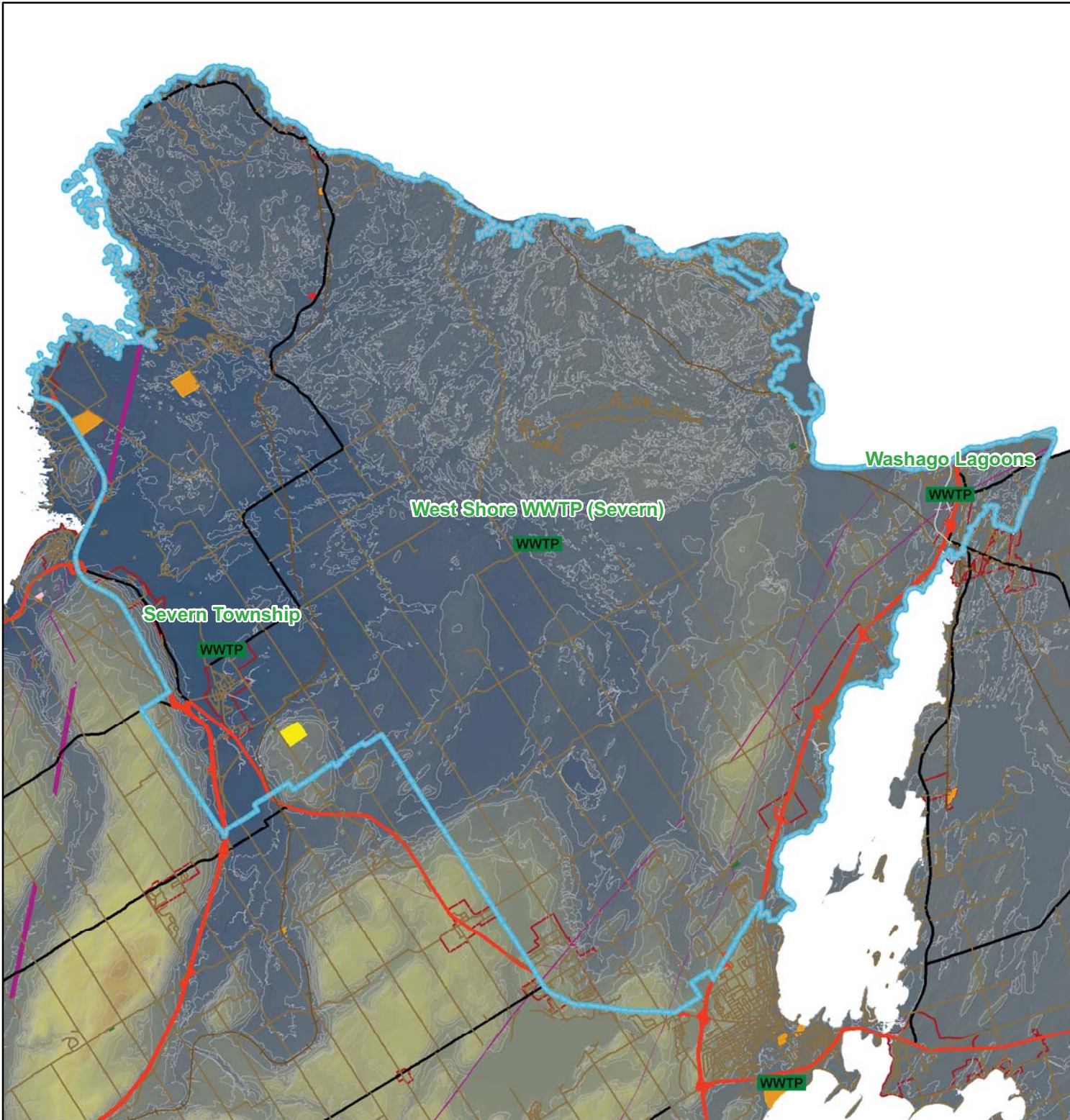
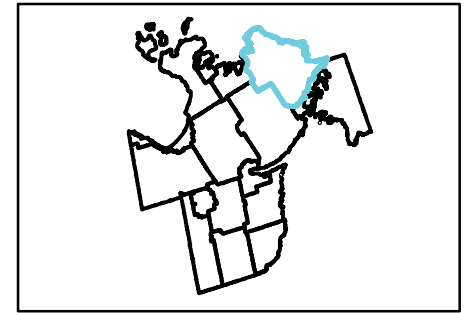
- WWTP Wastewater Treatment Plants
- Railway Active
- Railway Non-Active
- Provincial Highway
- County Road
- Local Road
- Easements
- Open Landfill Site
- Open Stump Dump
- Under Development Landfill Site
- Closed Landfill Site
- Closed Stump Dump
- 2008 Local & Private Waste Disposal Sites
- ▭ Municipal Border
- 10m Contours
- ▭ Settlement Areas
- High : 542
- Low : 175

1:180,000



This map, either in whole or in part, may not be reproduced without the written authority from the County of Simcoe, Copyright © County of Simcoe Land Information Network Cooperative - LINC 2010
Produced (in part) under license from: the Cities of Barrie & Orillia, the Ontario Ministry of Natural Resources (Copyright - Queens Printer 2010), ©Verant Enterprises Inc. and its suppliers all rights reserved, and Members of the Ontario Geospatial Data Exchange.
THIS IS NOT A PLAN OF SURVEY.
For information call (705) 726-9300 or visit www.simcoe.ca

SAN-17 Severn Wastewater Servicing Plan



Legend

- WWTP Wastewater Treatment Plants
- Railway Active
- Railway Non-Active
- Provincial Highway
- County Road
- Local Road
- Easements
- Open Landfill Site
- Open Stump Dump
- Under Development Landfill Site
- Closed Landfill Site
- Closed Stump Dump
- 2008 Local & Private Waste Disposal Sites
- Municipal Border
- 10m Contours
- Settlement Areas
- High : 542
- Low : 175

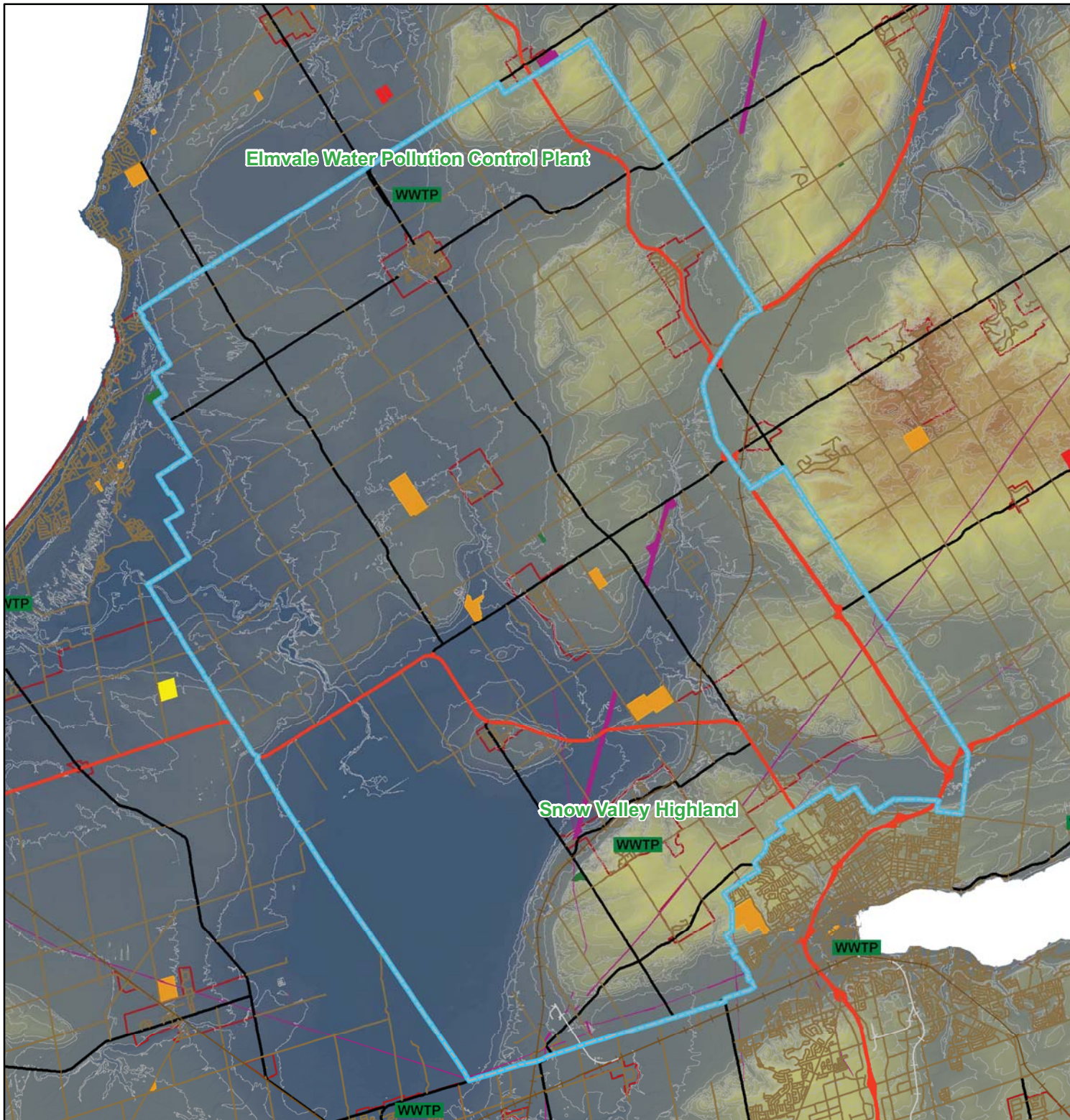
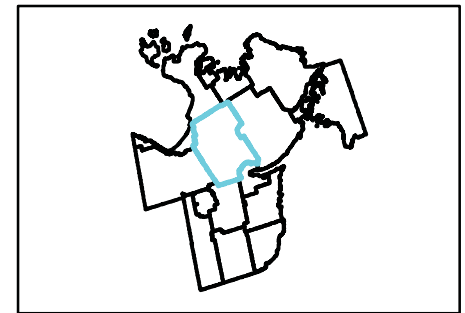
1:180,000

0 1.25 2.5 5 Kilometers



This map, either in whole or in part, may not be reproduced without the written authority from the County of Simcoe, Copyright © County of Simcoe Land Information Network Cooperative - LINC 2010. Produced (in part) under license from: the Cities of Barrie & Orillia, the Ontario Ministry of Natural Resources (Copyright - Queens Printer 2010), ©Verant Enterprises Inc. and its suppliers all rights reserved, and Members of the Ontario Geospatial Data Exchange. THIS IS NOT A PLAN OF SURVEY. For information call (705) 726-9300 or visit www.simcoe.ca

SAN-18 Springwater Wastewater Servicing Plan



Legend

- WWTP Wastewater Treatment Plants
- Railway Active
- Railway Non-Active
- Provincial Highway
- County Road
- Local Road
- Easements
- Open Landfill Site
- Open Stump Dump
- Under Development Landfill Site
- Closed Landfill Site
- Closed Stump Dump
- 2008 Local & Private Waste Disposal Sites
- ▭ Municipal Border
- 10m Contours
- ▭ Settlement Areas
- High : 542
- Low : 175

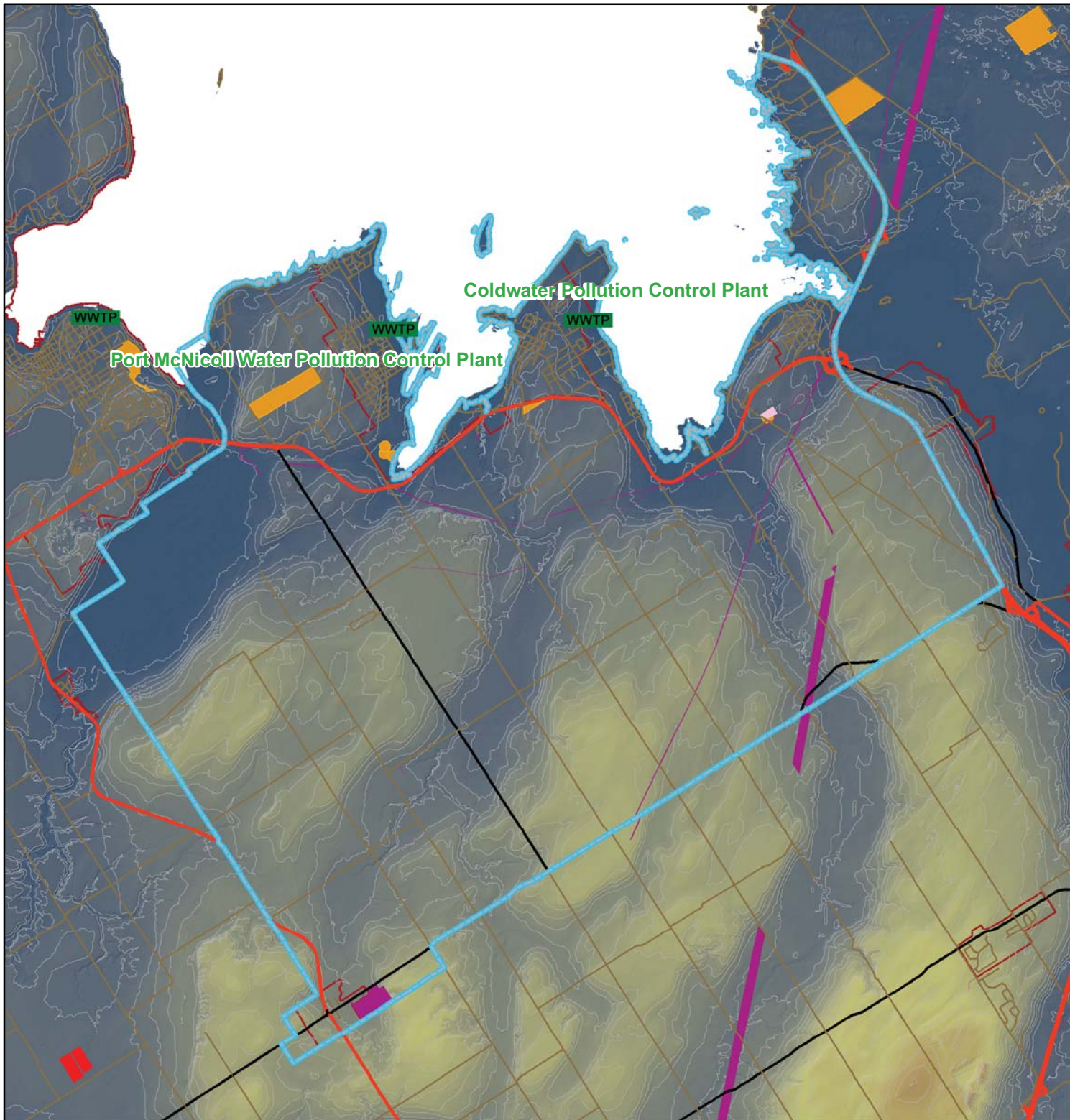
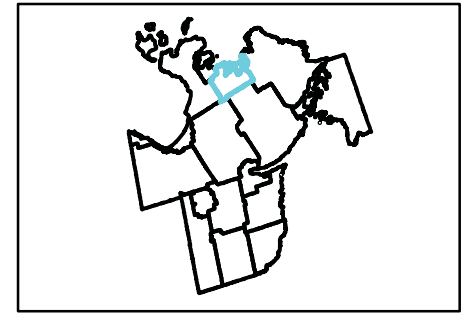
1:180,000

0 1.25 2.5 5 Kilometers



This map, either in whole or in part, may not be reproduced without the written authority from the County of Simcoe, Copyright © County of Simcoe Land Information Network Cooperative - LINC 2010
Produced (in part) under license from: the Cities of Barrie & Orillia, the Ontario Ministry of Natural Resources (Copyright - Queens Printer 2010), Verant Enterprises Inc, and its suppliers all rights reserved, and Members of the Ontario Geospatial Data Exchange.
THIS IS NOT A PLAN OF SURVEY.
For information call (705) 726-9300 or visit www.simcoe.ca

SAN-19 Tay Wastewater Servicing Plan



Legend

- WWTP Wastewater Treatment Plants
- Railway Active
- Railway Non-Active
- Provincial Highway
- County Road
- Local Road
- Easements
- Open Landfill Site
- Open Stump Dump
- Under Development Landfill Site
- Closed Landfill Site
- Closed Stump Dump
- 2008 Local & Private Waste Disposal Sites
- Municipal Border
- 10m Contours
- Settlement Areas
- High : 542
- Low : 175

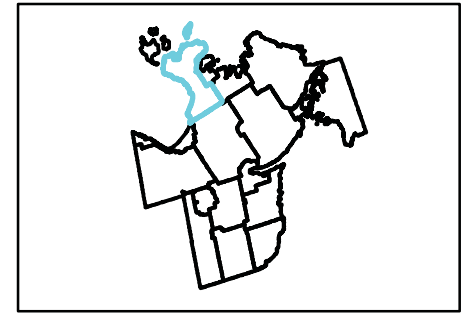
1:100,000

0 0.40.8 1.6 Kilometers



This map, either in whole or in part, may not be reproduced without the written authority from the County of Simcoe, Copyright © County of Simcoe Land Information Network Cooperative - LINC 2010
Produced (in part) under license from: the Cities of Barrie & Orillia, the Ontario Ministry of Natural Resources (Copyright - Queens Printer 2010), ©Verant Enterprises Inc. and its suppliers all rights reserved, and Members of the Ontario Geospatial Data Exchange.
THIS IS NOT A PLAN OF SURVEY.
For information call (705) 726-9300 or visit www.simcoe.ca

SAN-20 Tiny Wastewater Servicing Plan



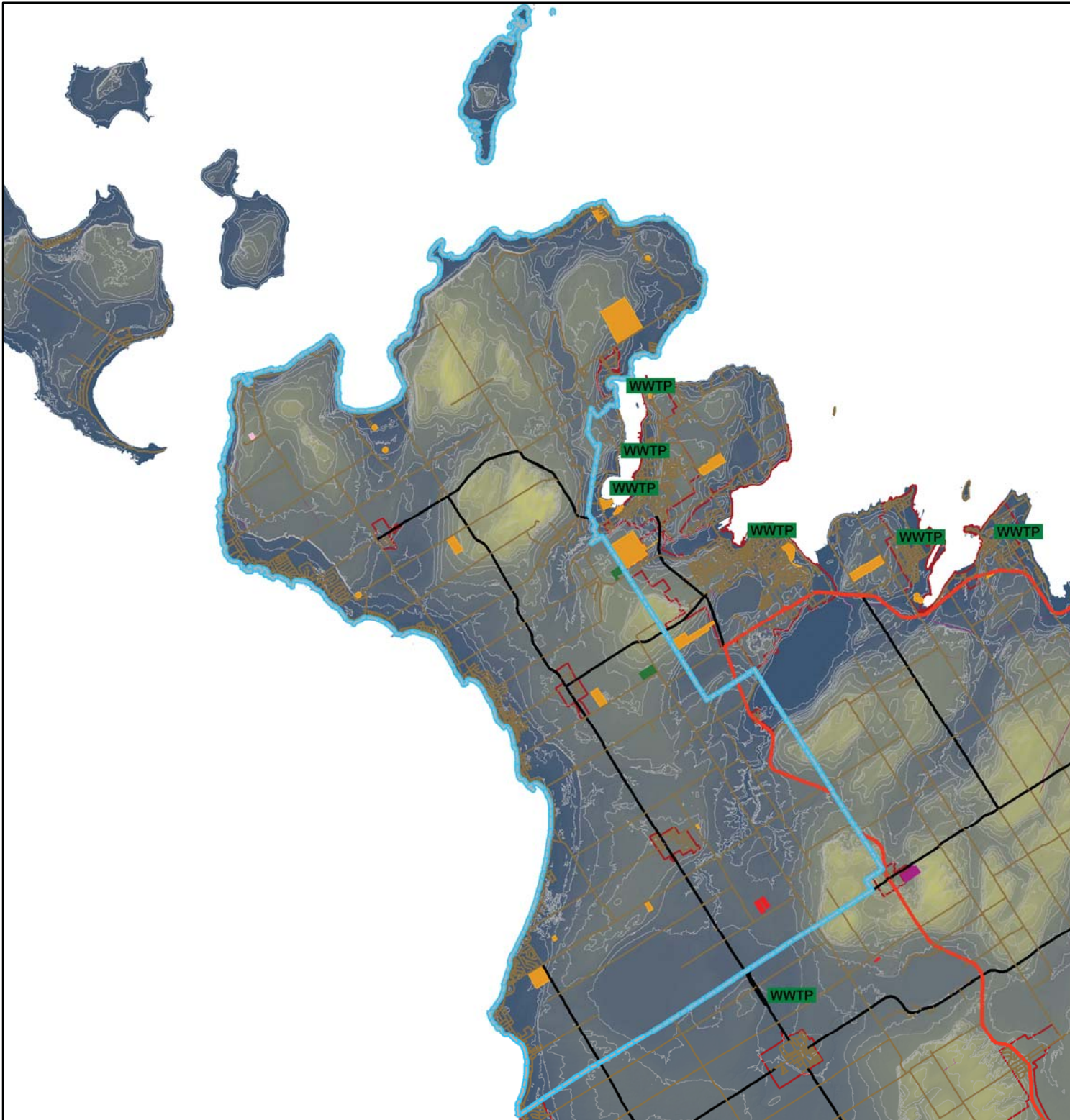
Legend

- WWTP Wastewater Treatment Plants
- Railway Active
- Railway Non-Active
- Provincial Highway
- County Road
- Local Road
- Easements
- Open Landfill Site
- Open Stump Dump
- Under Development Landfill Site
- Closed Landfill Site
- Closed Stump Dump
- 2008 Local & Private Waste Disposal Sites
- Municipal Border
- 10m Contours
- Settlement Areas
- High : 542
- Low : 175

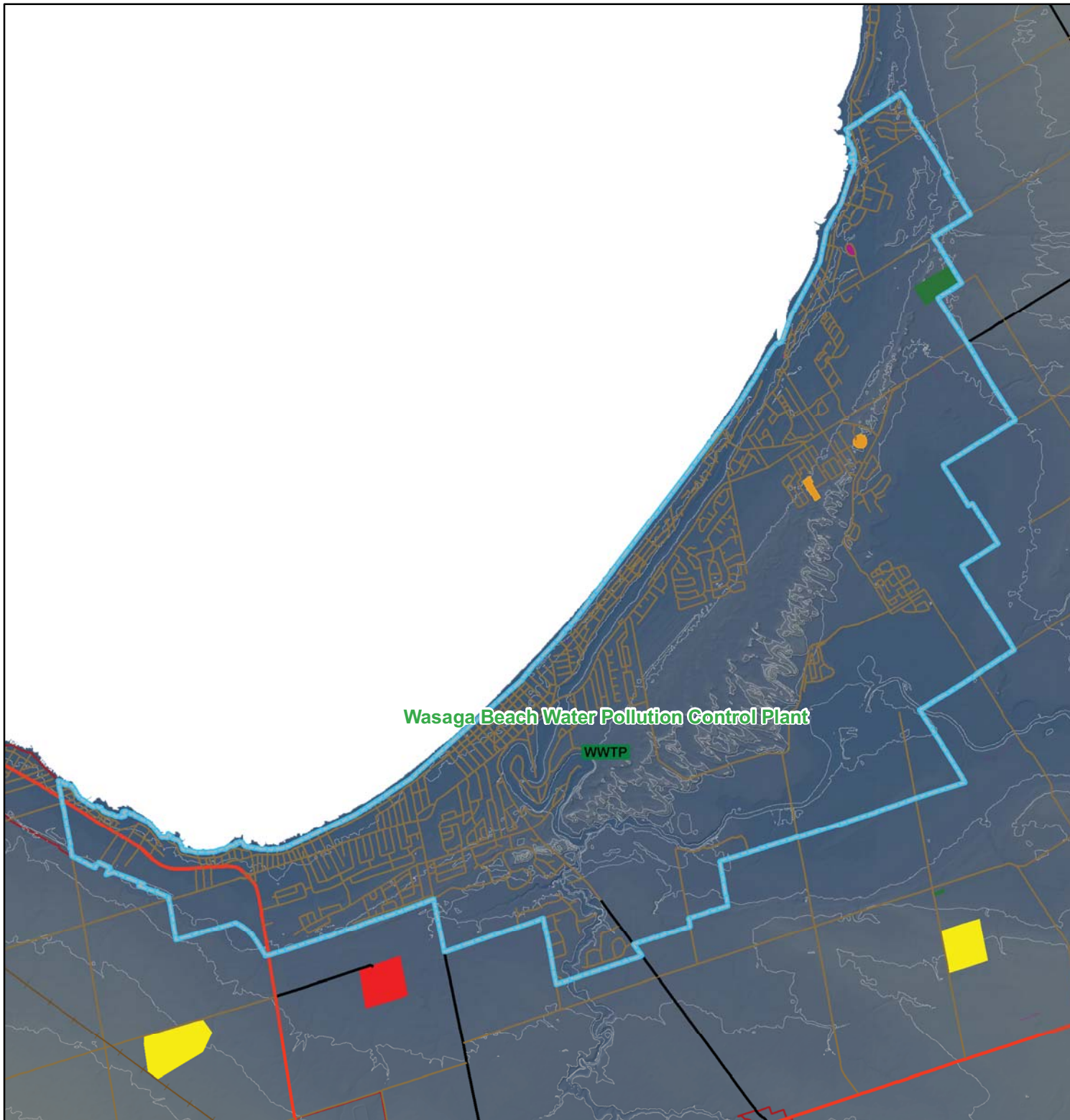
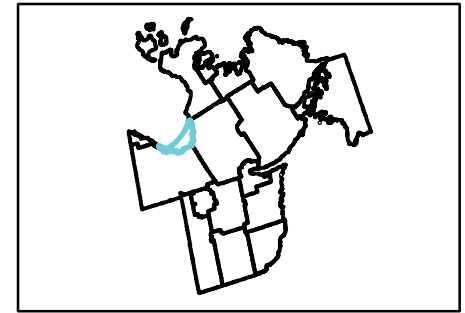
1:200,000



This map, either in whole or in part, may not be reproduced without the written authority from the County of Simcoe, Copyright © County of Simcoe Land Information Network Cooperative - LINC 2010
Produced (in part) under license from: the Cities of Barrie & Orillia, the Ontario Ministry of Natural Resources (Copyright - Queens Printer 2010), Verant Enterprises Inc. and its suppliers all rights reserved, and Members of the Ontario Geospatial Data Exchange.
THIS IS NOT A PLAN OF SURVEY.
For information call (705) 726-9300 or visit www.simcoe.ca



SAN-21 Wasaga Beach Wastewater Servicing Plan



Wasaga Beach Water Pollution Control Plant

WWTP

Legend

- WWTP Wastewater Treatment Plants
- Railway Active
- Railway Non-Active
- Provincial Highway
- County Road
- Local Road
- Easements
- Open Landfill Site
- Open Stump Dump
- Under Development Landfill Site
- Closed Landfill Site
- Closed Stump Dump
- 2008 Local & Private Waste Disposal Sites
- Municipal Border
- 10m Contours
- Settlement Areas
- High : 542
- Low : 175

1:80,000

0 0.5 1 2 Kilometers



This map, either in whole or in part, may not be reproduced without the written authority from the County of Simcoe, Copyright © County of Simcoe Land Information Network Cooperative - LINC 2010
Produced (in part) under license from: the Cities of Barrie & Orillia, the Ontario Ministry of Natural Resources (Copyright - Queens Printer 2010), ©Verant Enterprises Inc. and its suppliers all rights reserved, and Members of the Ontario Geospatial Data Exchange.
THIS IS NOT A PLAN OF SURVEY.
For information call (705) 726-9300 or visit www.simcoe.ca