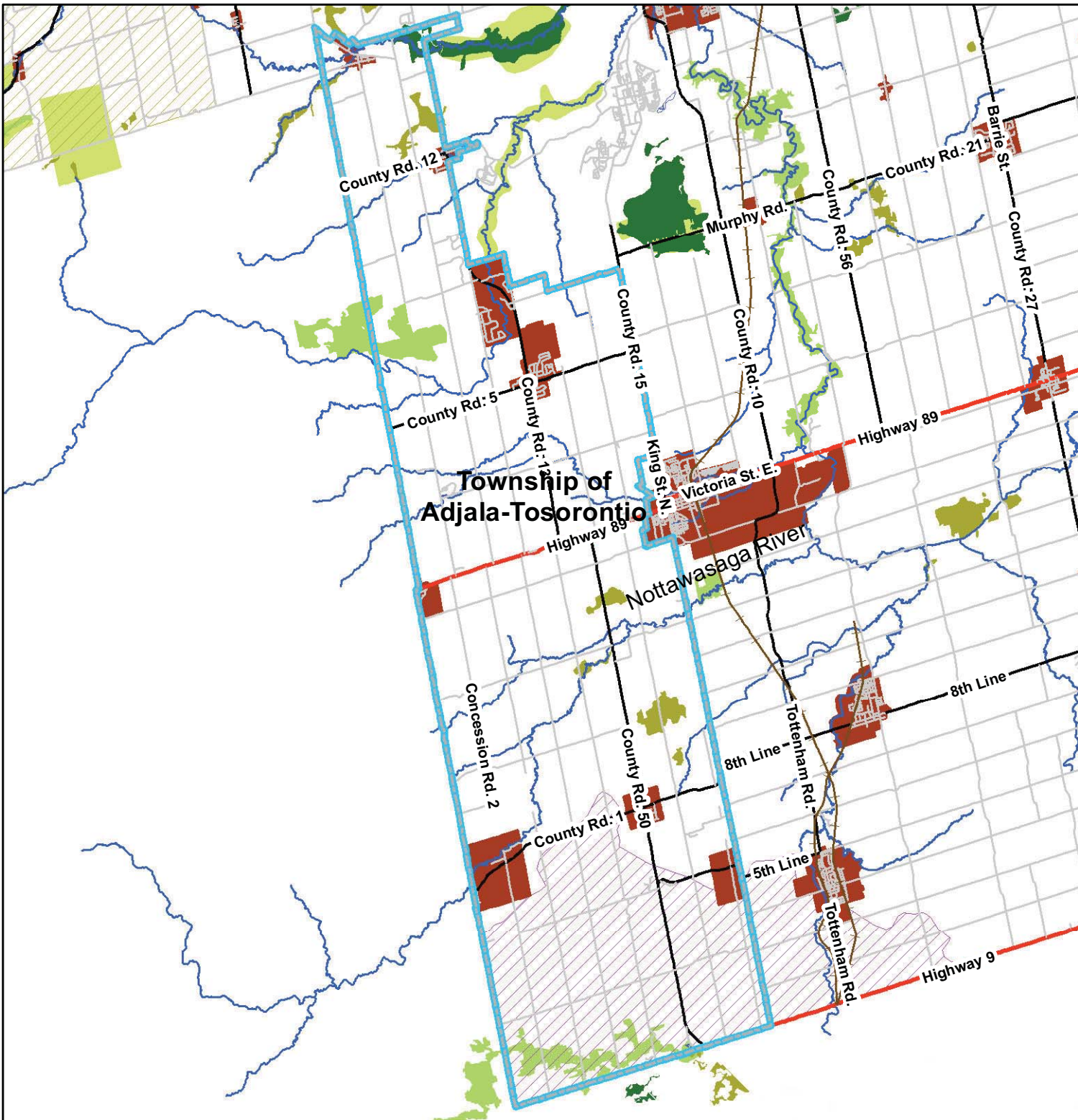
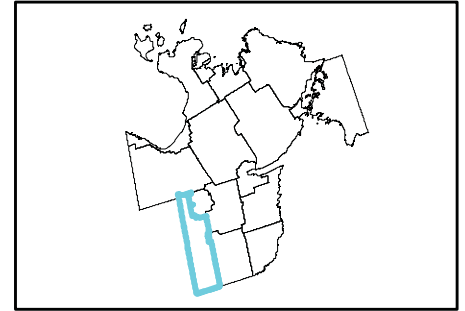


**APPENDIX A-3: COUNTY OF SIMCOE AND SURROUNDING
AREA: NATURAL HERITAGE FEATURES
AND TRANSPORTATION CORRIDORS
FIGURES**

NH-1 Adjala-Tosorontio Simcoe County Official Plan Natural Heritage Features Transportation Corridors



Legend

- Water Courses
- Railway Active
- Railway Non-Active
- Provincial Highway
- County Road
- LOCAL
- Niagara Escarpment Plan Boundary
- Oak Ridges Moraine Area
- Provincially Significant Wetland
- Locally Significant Wetland
- Marsh
- Provincial ANSI
- Regional ANSI
- Settlement Areas
- Municipal Border

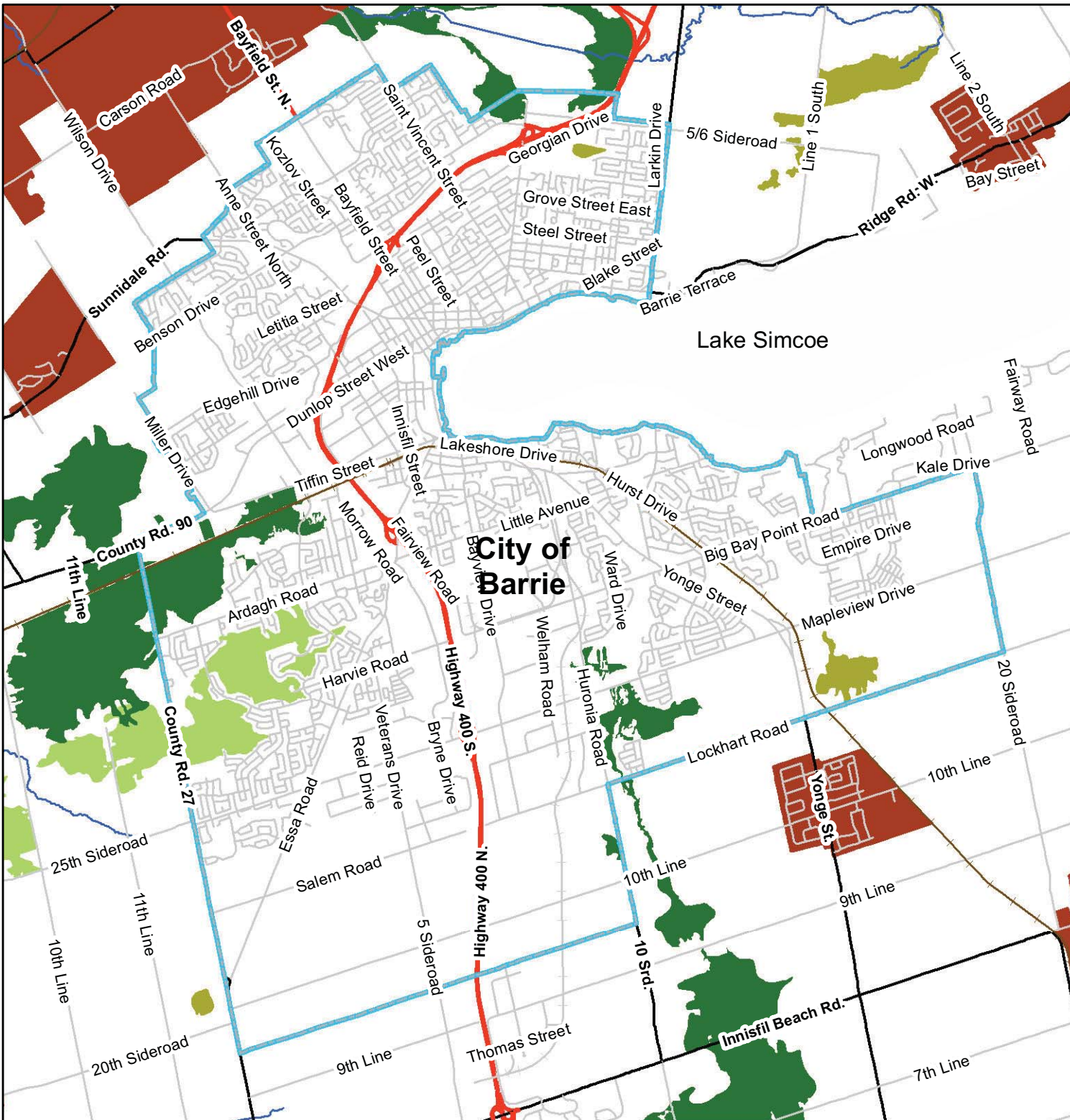
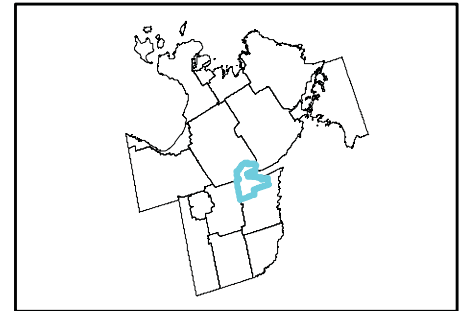
1:200,000



This map, either in whole or in part, may not be reproduced without the written authority from the County of Simcoe, Copyright ©, County of Simcoe Land Information Network Cooperative - LINC, 2010.
Produced in part under license from the City of Barrie & Orillia, the Ontario Ministry of Natural Resources (Copyright ©, Queen's Printer, 2010), i2iSource Enterprises Inc., and its suppliers, all rights reserved, and Members of the Ontario Geospatial Data Exchange.
THIS IS NOT A PLAN OF SURVEY.
For information call (705) 726-9300 or visit www.simcoe.ca

NH-2 Barrie

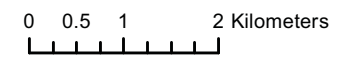
Simcoe County Official Plan Natural Heritage Features Transportation Corridors



Legend

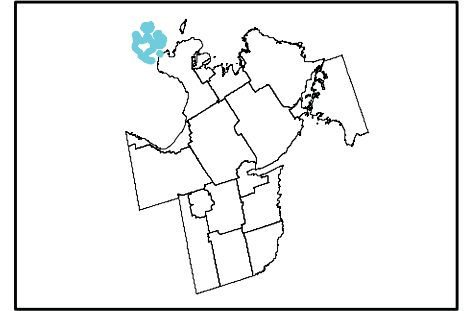
- Water Courses
- Railway Active
- Railway Non-Active
- Provincial Highway
- County Road
- LOCAL
- Niagara Escarpment Plan Boundary
- Oak Ridges Moraine Area
- Provincially Significant Wetland
- Locally Significant Wetland
- Marsh
- Provincial ANSI
- Regional ANSI
- Settlement Areas
- Municipal Border

1:80,000



This map, either in whole or in part, may not be reproduced without the written authority from the County of Simcoe, Copyright © County of Simcoe Land Information Network Cooperative - LINC, 2010.
Produced in part under license from the City of Barrie & Orillia, the Ontario Ministry of Natural Resources (Copyright © Queen's Printer 2010), i2iSource Enterprises Inc., and its suppliers, all rights reserved, and Members of the Ontario Geospatial Data Exchange.
THIS IS NOT A PLAN OF SURVEY.
For information call (705) 726-9300 or visit www.simcoe.ca

NH-3 Beausoleil Simcoe County Official Plan Natural Heritage Features Transportation Corridors



Legend

- Water Courses
- Railway Active
- Railway Non-Active
- Provincial Highway
- County Road
- LOCAL
- Niagara Escarpment Plan Boundary
- Oak Ridges Moraine Area
- Provincially Significant Wetland
- Locally Significant Wetland
- Marsh
- Provincial ANSI
- Regional ANSI
- Settlement Areas
- Municipal Border

1:80,000



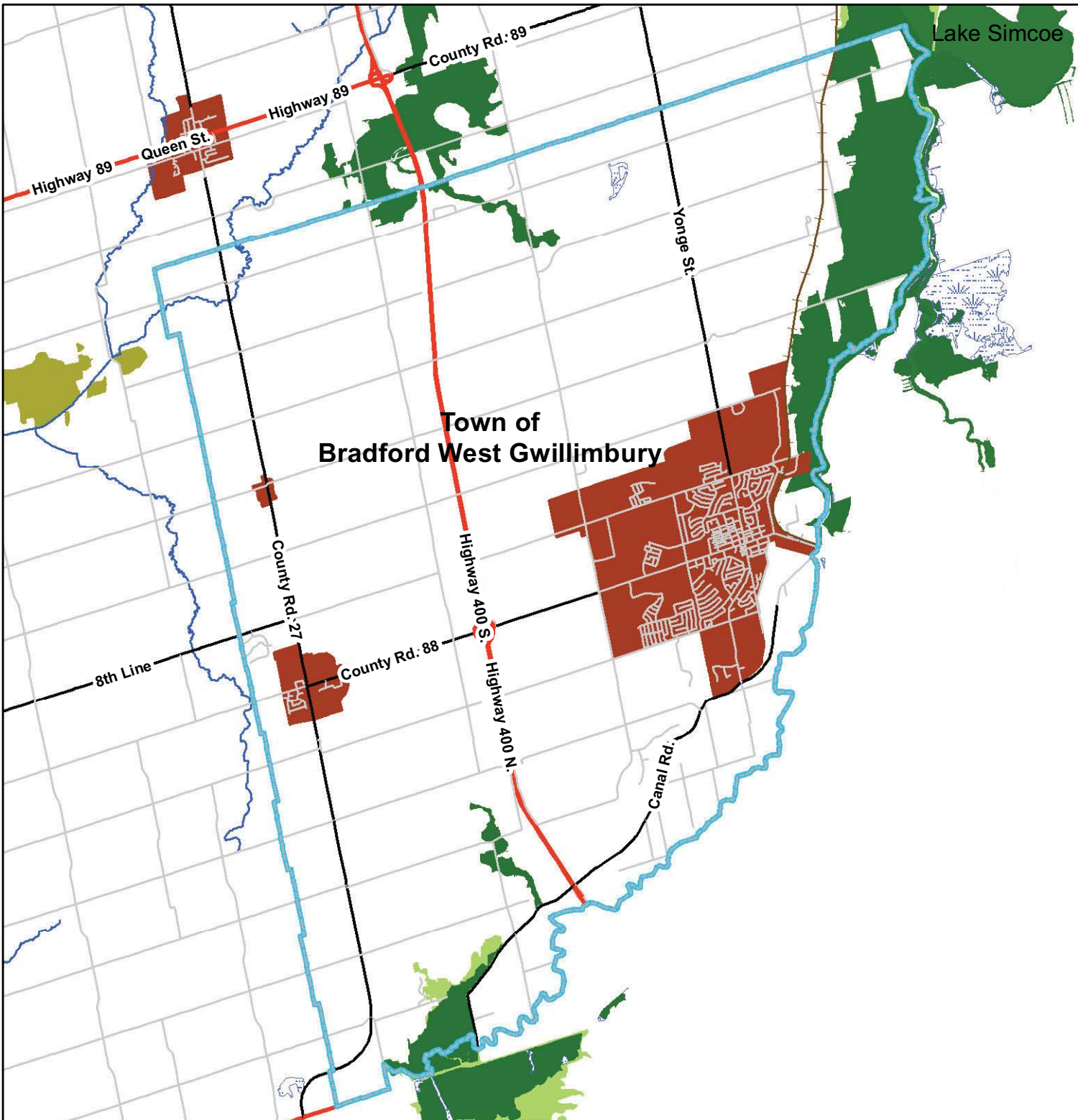
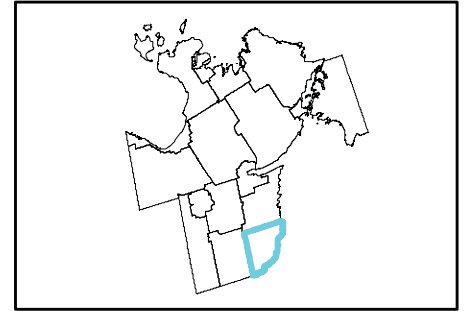
This map, either in whole or in part, may not be reproduced without the written authority from the County of Simcoe. Copyright © County of Simcoe Land Information Network Cooperative - LINC, 2010.

Produced in part under license from the City of Barrie & Orillia, the Ontario Ministry of Natural Resources (Copyright © Queen's Printer 2010), iClimat Enterprises Inc. and its suppliers, all rights reserved, and Members of the Ontario Geospatial Data Exchange.

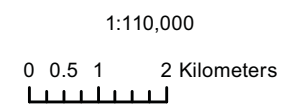
THIS IS NOT A PLAN OF SURVEY.

For information call (705) 726-9300 or visit www.simcoe.ca

NH-4 Bradford West Gwillimbury Simcoe County Official Plan Natural Heritage Features Transportation Corridors



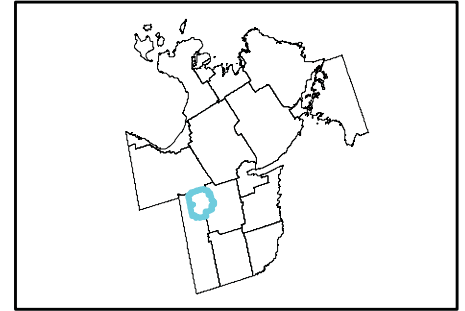
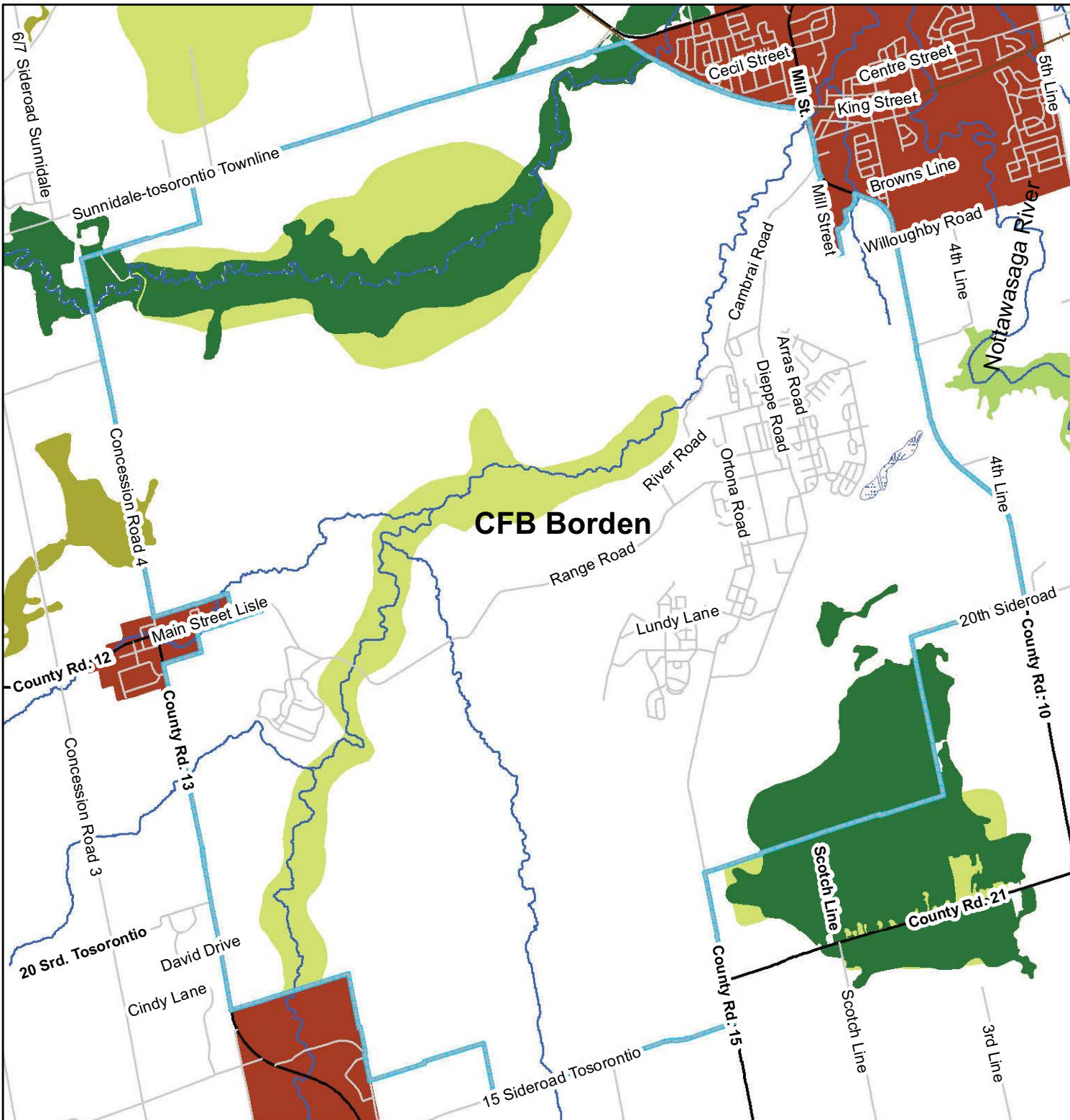
- Legend**
- Water Courses
 - Railway Active
 - Railway Non-Active
 - Provincial Highway
 - County Road
 - LOCAL
 - Niagara Escarpment Plan Boundary
 - Oak Ridges Moraine Area
 - Provincially Significant Wetland
 - Locally Significant Wetland
 - Marsh
 - Provincial ANSI
 - Regional ANSI
 - Settlement Areas
 - Municipal Border



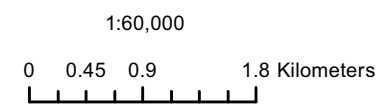
LINC
LAND INFORMATION NETWORK COOPERATIVE

This map, either in whole or in part, may not be reproduced without the written authority from the County of Simcoe, Copyright ©, County of Simcoe Land Information Network Cooperative - LINC, 2010.
Produced in part under license from the City of Barrie & Orillia, the Ontario Ministry of Natural Resources (Copyright © Queen Printer 2010), i2iSource Enterprises Inc. and its suppliers, all rights reserved, and Members of the Ontario Geospatial Data Exchange.
THIS IS NOT A PLAN OF SURVEY.
For information call (705) 726-9300 or visit www.simcoe.ca

CFB Borden Simcoe County Official Plan Natural Heritage Features Transportation Corridors



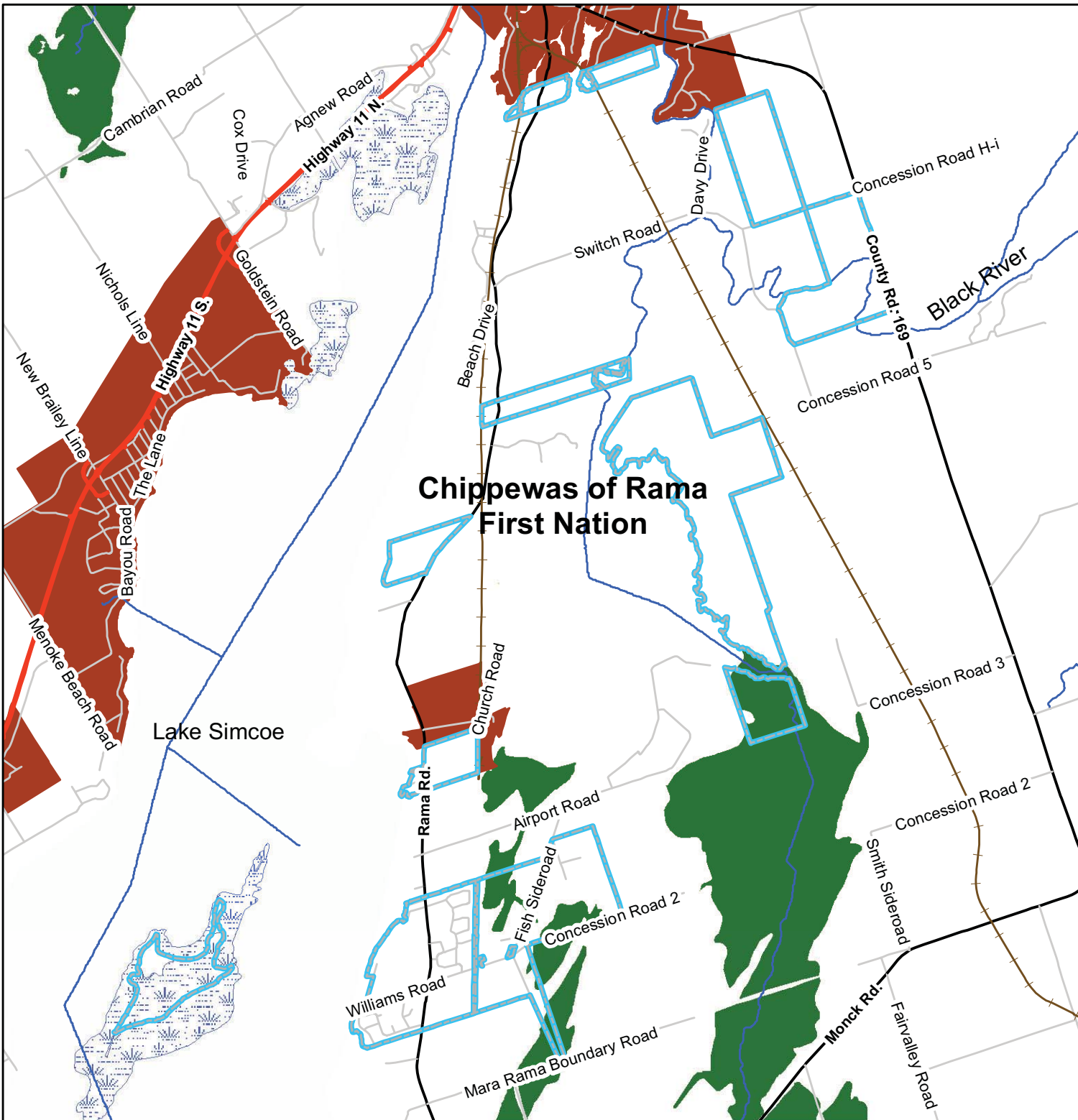
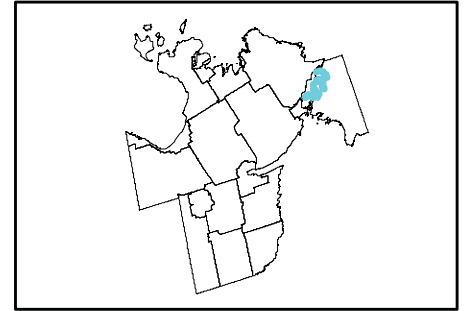
- Legend**
- Water Courses
 - Railway Active
 - Railway Non-Active
 - Provincial Highway
 - County Road
 - LOCAL
 - Niagara Escarpment Plan Boundary
 - Oak Ridges Moraine Area
 - Provincially Significant Wetland
 - Locally Significant Wetland
 - Marsh
 - Provincial ANSI
 - Regional ANSI
 - Settlement Areas
 - Municipal Border



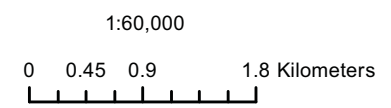
LINC LAND INFORMATION NETWORK COOPERATIVE

This map, either in whole or in part, may not be reproduced without the written authority from the County of Simcoe, Copyright ©, County of Simcoe Land Information Network Cooperative - LINC, 2010.
Produced in part under license from the City of Barrie & Orillia, the Ontario Ministry of Natural Resources (Copyright - Queen Printer 2010), i2iSource Enterprises Inc. and its suppliers, all rights reserved, and Members of the Ontario Geospatial Data Exchange.
THIS IS NOT A PLAN OF SURVEY.
For information call (905) 26-9309 or visit www.simcoe.ca

NH-6 Chippewas of Rama Simcoe County Official Plan Natural Heritage Features Transportation Corridors



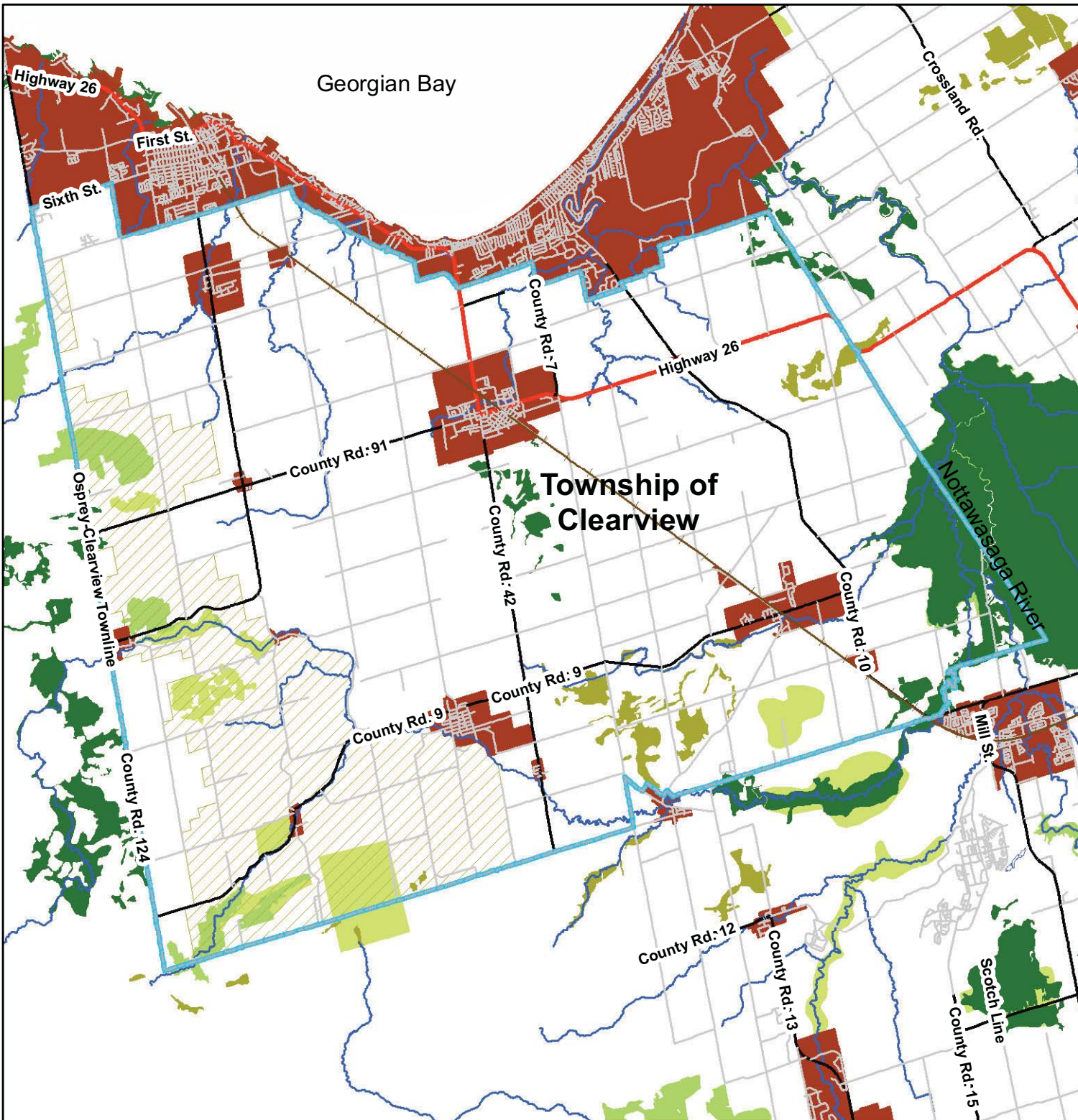
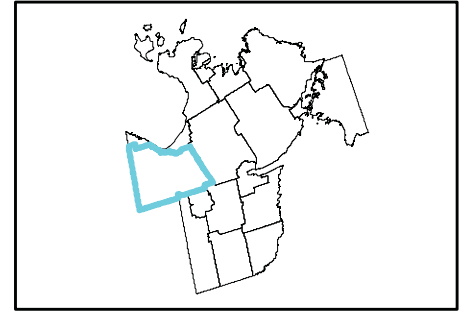
- Legend**
- Water Courses
 - Railway Active
 - Railway Non-Active
 - Provincial Highway
 - County Road
 - LOCAL
 - Niagara Escarpment Plan Boundary
 - Oak Ridges Moraine Area
 - Provincially Significant Wetland
 - Locally Significant Wetland
 - Marsh
 - Provincial ANSI
 - Regional ANSI
 - Settlement Areas
 - Municipal Border



LINC
LAND INFORMATION NETWORK COOPERATIVE

This map, either in whole or in part, may not be reproduced without the written authority from the County of Simcoe, Copyright ©, County of Simcoe Land Information Network Cooperative - LINC, 2010.
Produced in part under license from the City of Barrie & Orillia, the Ontario Ministry of Natural Resources (Copyright - Queen Printer 2010), ©Tiscare Enterprises Inc. and its suppliers all rights reserved, and Members of the Ontario Geospatial Data Exchange.
THIS IS NOT A PLAN OF SURVEY.
For information call (705) 726-9300 or visit www.simcoe.ca

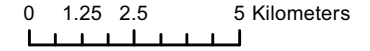
Simcoe County Official Plan Natural Heritage Features Transportation Corridors




Legend

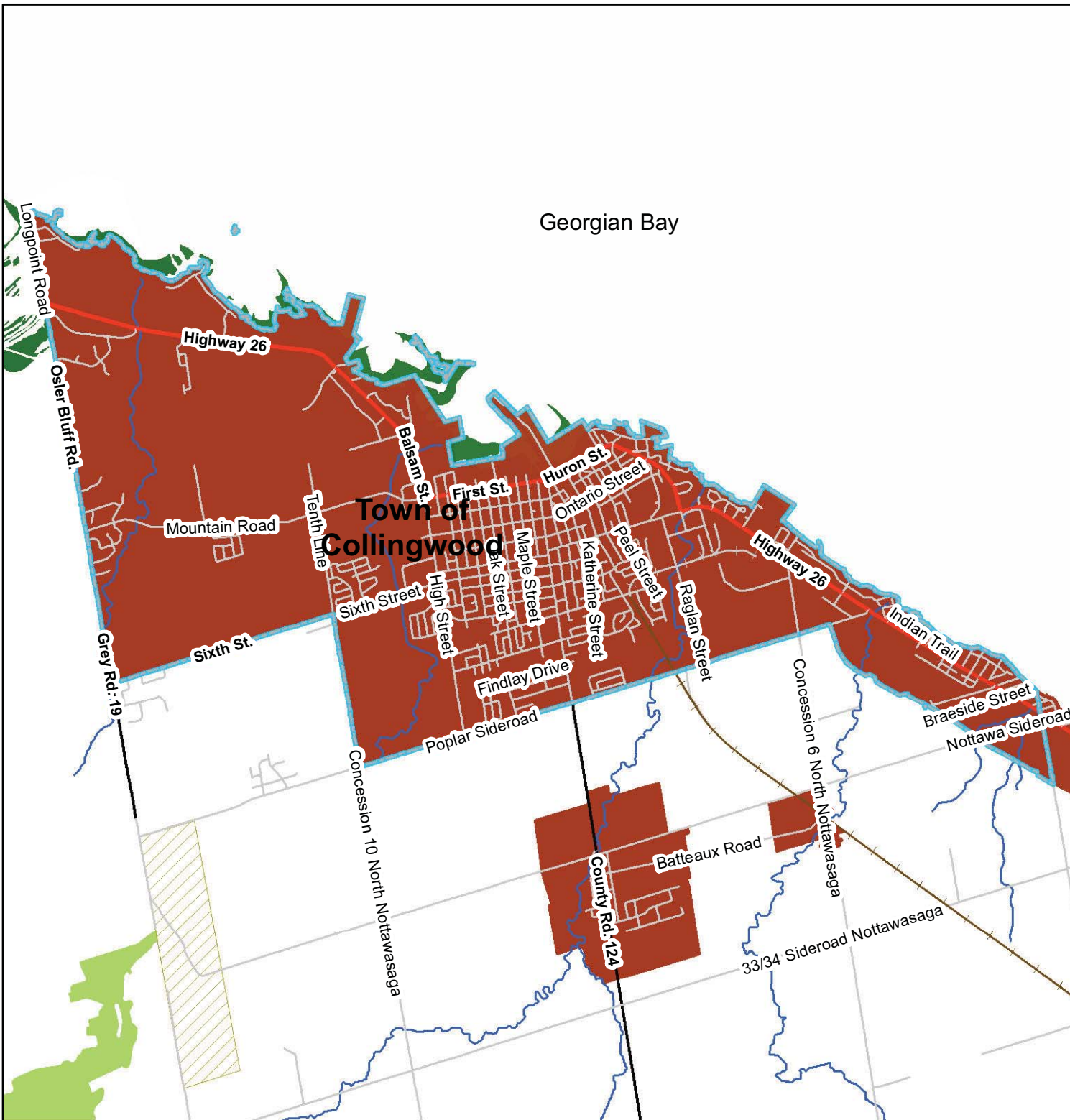
- Water Courses
- Railway Active
- Railway Non-Active
- Provincial Highway
- County Road
- LOCAL
- Niagara Escarpment Plan Boundary
- Oak Ridges Moraine Area
- Provincially Significant Wetland
- Locally Significant Wetland
- Marsh
- Provincial ANSI
- Regional ANSI
- Settlement Areas
- Municipal Border

1:180,000



 This map, either in whole or in part, may not be reproduced without the written authority from the County of Simcoe, Copyright ©, County of Simcoe Land Information Network Cooperative - LINC, 2010.
Produced in part under license from the City of Barrie & Orillia, the Ontario Ministry of Natural Resources (Copyright ©, Queen's Printer, 2010), i2iSource Enterprises Inc., and its suppliers, all rights reserved, and Members of the Ontario Geospatial Data Exchange.
THIS IS NOT A PLAN OF SURVEY.
For information call (705) 726-9300 or visit www.simcoe.ca

NH-8 Collingwood Simcoe County Official Plan Natural Heritage Features Transportation Corridors



Legend

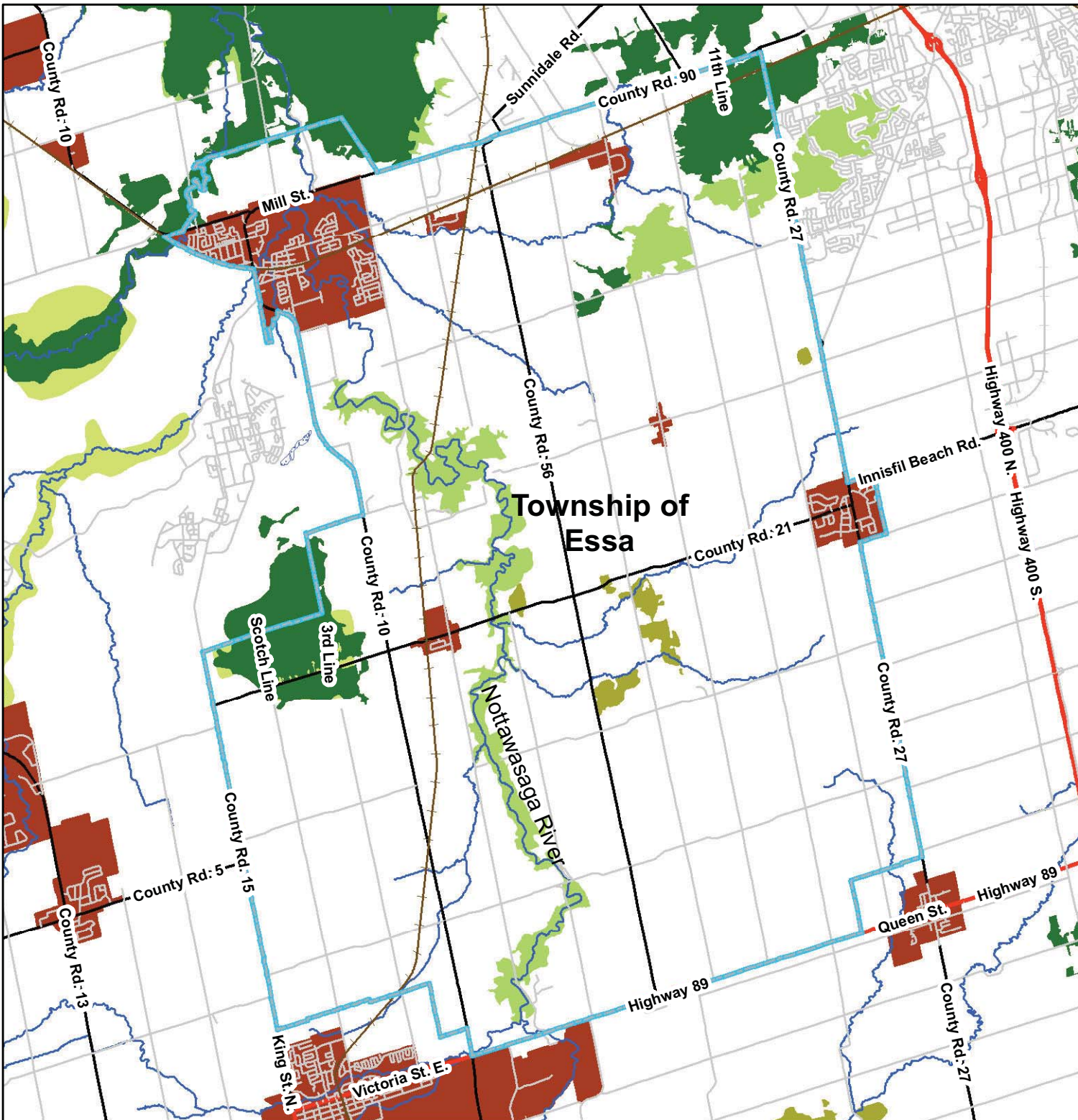
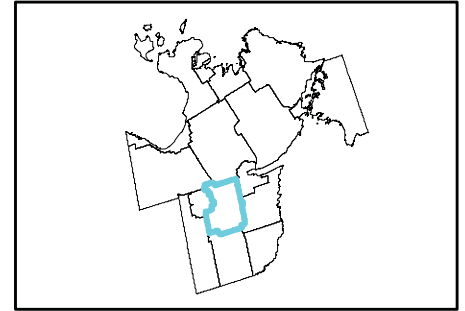
- Water Courses
- Railway Active
- Railway Non-Active
- Provincial Highway
- County Road
- LOCAL
- Niagara Escarpment Plan Boundary
- Oak Ridges Moraine Area
- Provincially Significant Wetland
- Locally Significant Wetland
- Marsh
- Provincial ANSI
- Regional ANSI
- Settlement Areas
- Municipal Border

1:65,000



This map, either in whole or in part, may not be reproduced without the written authority from the County of Simcoe, Copyright ©, County of Simcoe Land Information Network Cooperative - LINC, 2010.
Produced in part under license from the City of Barrie & Orillia, the Ontario Ministry of Natural Resources (Copyright ©, Queen Printer 2010), Wetmore Enterprises Inc., and its suppliers, all rights reserved, and Members of the Ontario Geospatial Data Exchange.
THIS IS NOT A PLAN OF SURVEY.
For information call (705) 726-9300 or visit www.simcoe.ca

Simcoe County Official Plan
Natural Heritage Features
Transportation Corridors



Legend

- Water Courses
- Railway Active
- Railway Non-Active
- Provincial Highway
- County Road
- LOCAL
- Niagara Escarpment Plan Boundary
- Oak Ridges Moraine Area
- Provincially Significant Wetland
- Locally Significant Wetland
- Marsh
- Provincial ANSI
- Regional ANSI
- Settlement Areas
- Municipal Border

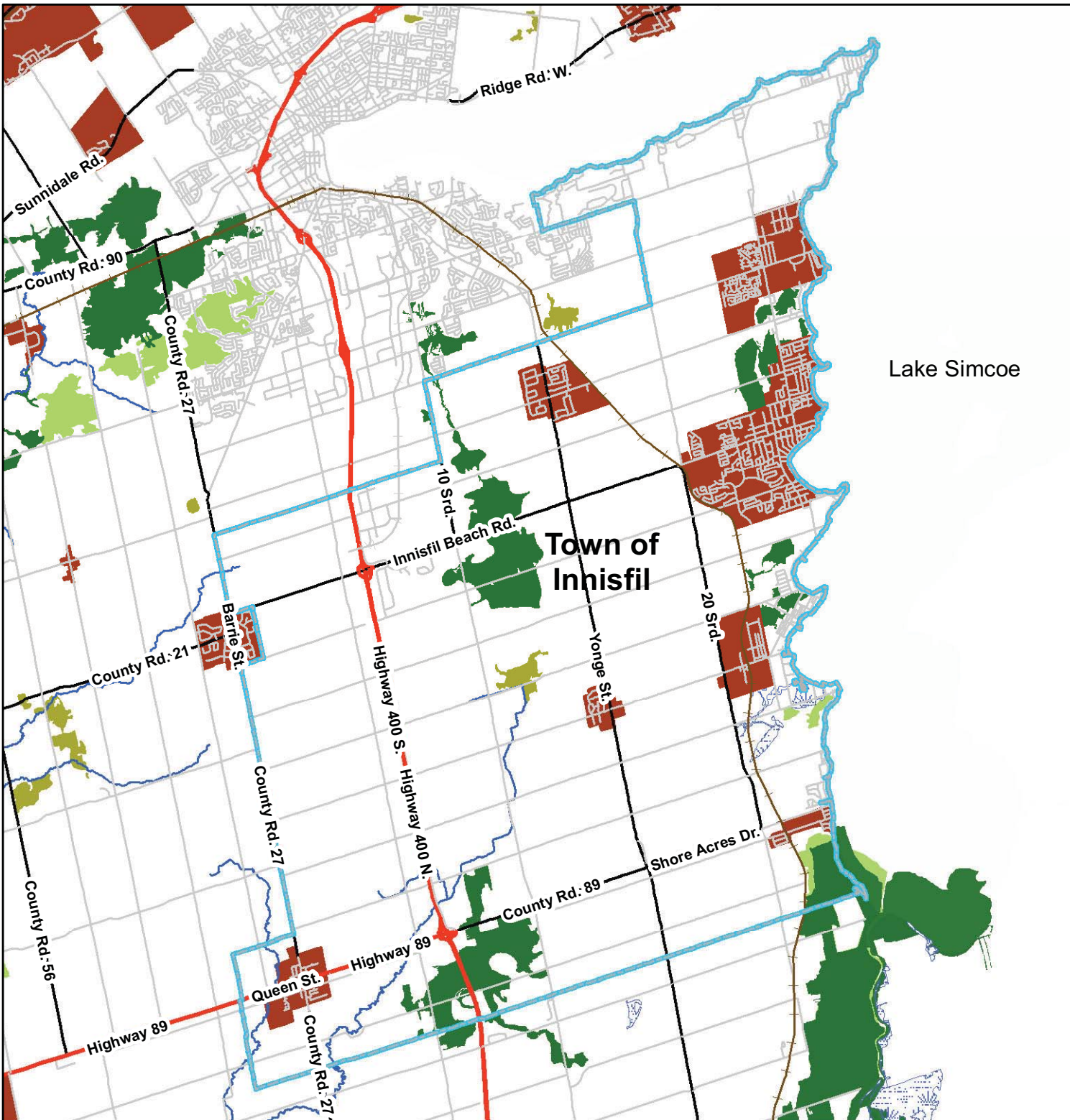
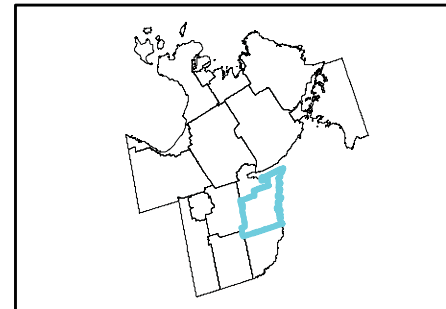
1:120,000

0 0.5 1 2 Kilometers



This map, either in whole or in part, may not be reproduced without the written authority from the County of Simcoe, Copyright ©, County of Simcoe Land Information Network Cooperative - LINC, 2010.
Produced in part under license from the City of Barrie & Orillia, the Ontario Ministry of Natural Resources (Copyright © Queen Printer 2010), i2iSource Enterprises Inc. and its suppliers all rights reserved, and Members of the Ontario Geospatial Data Exchange.
THIS IS NOT A PLAN OF SURVEY.
For information call (705) 726-9399 or visit www.simcoe.ca

Simcoe County Official Plan Natural Heritage Features Transportation Corridors



Lake Simcoe

Legend

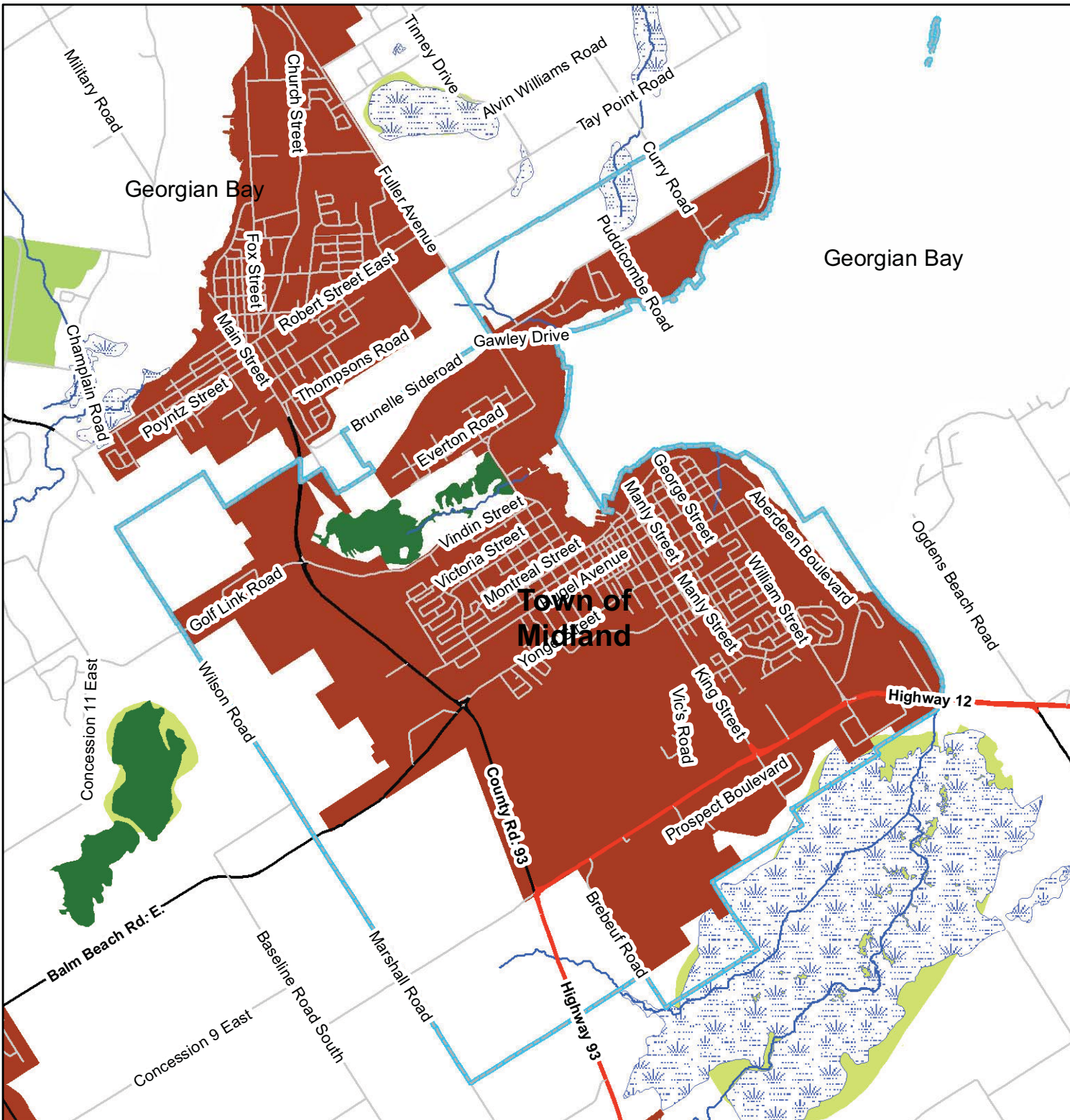
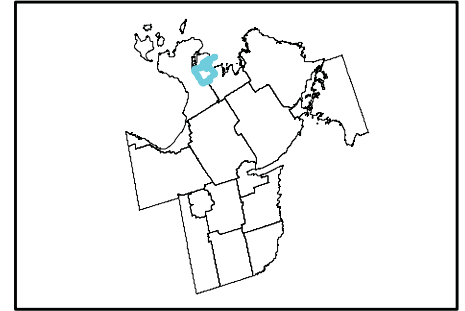
- Water Courses
- Railway Active
- Railway Non-Active
- Provincial Highway
- County Road
- LOCAL
- Niagara Escarpment Plan Boundary
- Oak Ridges Moraine Area
- Provincially Significant Wetland
- Locally Significant Wetland
- Marsh
- Provincial ANSI
- Regional ANSI
- Settlement Areas
- Municipal Border

1:140,000



This map, either in whole or in part, may not be reproduced without the written authority from the County of Simcoe, Copyright ©, County of Simcoe Land Information Network Cooperative - LINC, 2010.
Produced in part under license from the City of Barrie & Orillia, the Ontario Ministry of Natural Resources (Copyright ©, Queen's Printer 2010), ©Tiscare Enterprises Inc., and its suppliers, all rights reserved, and Members of the Ontario Geospatial Data Exchange.
THIS IS NOT A PLAN OF SURVEY.
For information call (705) 726-9399 or visit www.simcoe.ca

Simcoe County Official Plan
Natural Heritage Features
Transportation Corridors



Legend

- Water Courses
- Railway Active
- Railway Non-Active
- Provincial Highway
- County Road
- LOCAL
- Niagara Escarpment Plan Boundary
- Oak Ridges Moraine Area
- Provincially Significant Wetland
- Locally Significant Wetland
- Marsh
- Provincial ANSI
- Regional ANSI
- Settlement Areas
- Municipal Border

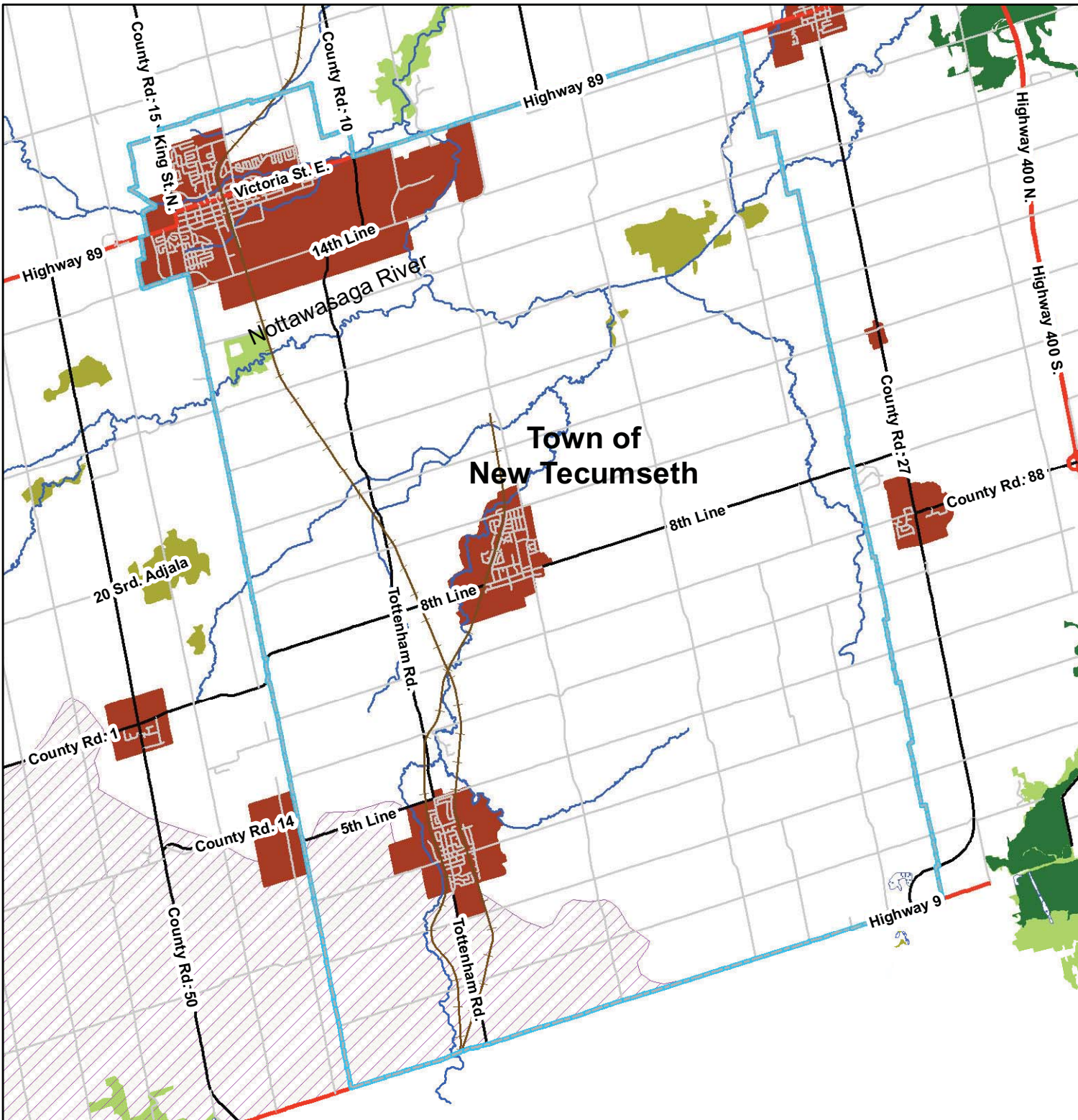
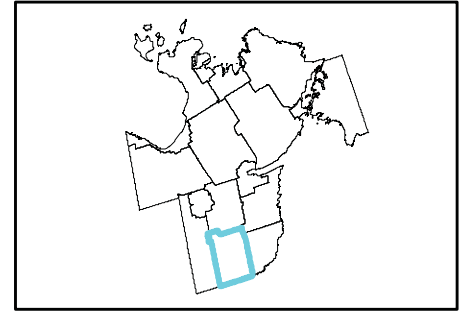
1:55,000



LINC
LAND INFORMATION NETWORK COOPERATIVE

This map, either in whole or in part, may not be reproduced without the written authority from the County of Simcoe, Copyright ©, County of Simcoe Land Information Network Cooperative - LINC, 2010.
Produced in part under license from the City of Barrie & Orillia, the Ontario Ministry of Natural Resources (Copyright © Queen's Printer 2010), i2iSource Enterprises Inc. and its suppliers all rights reserved, and Members of the Ontario Geospatial Data Exchange.
THIS IS NOT A PLAN OF SURVEY.
For information call (705) 726-9300 or visit www.simcoe.ca

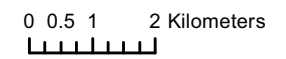
New Tecumseth Simcoe County Official Plan Natural Heritage Features Transportation Corridors



Legend

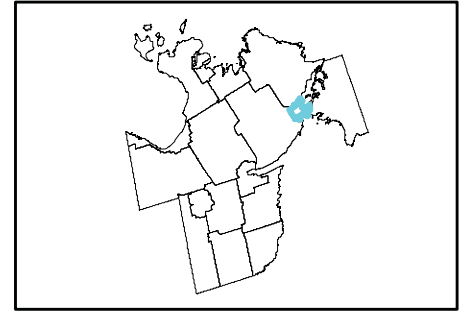
- Water Courses
- Railway Active
- Railway Non-Active
- Provincial Highway
- County Road
- LOCAL
- Niagara Escarpment Plan Boundary
- Oak Ridges Moraine Area
- Provincially Significant Wetland
- Locally Significant Wetland
- Marsh
- Provincial ANSI
- Regional ANSI
- Settlement Areas
- Municipal Border

1:120,000



This map, either in whole or in part, may not be reproduced without the written authority from the County of Simcoe, Copyright © County of Simcoe Land Information Network Cooperative - LINC, 2010.
Produced in part under license from the City of Barrie & Orillia, the Ontario Ministry of Natural Resources (Copyright © Queen Printer 2010), i2iSource Enterprises Inc. and its suppliers, all rights reserved, and Members of the Ontario Geospatial Data Exchange.
 THIS IS NOT A PLAN OF SURVEY.
 For information call (705) 726-9300 or visit www.simcoe.ca

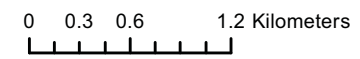

Simcoe County Official Plan Natural Heritage Features Transportation Corridors



Legend

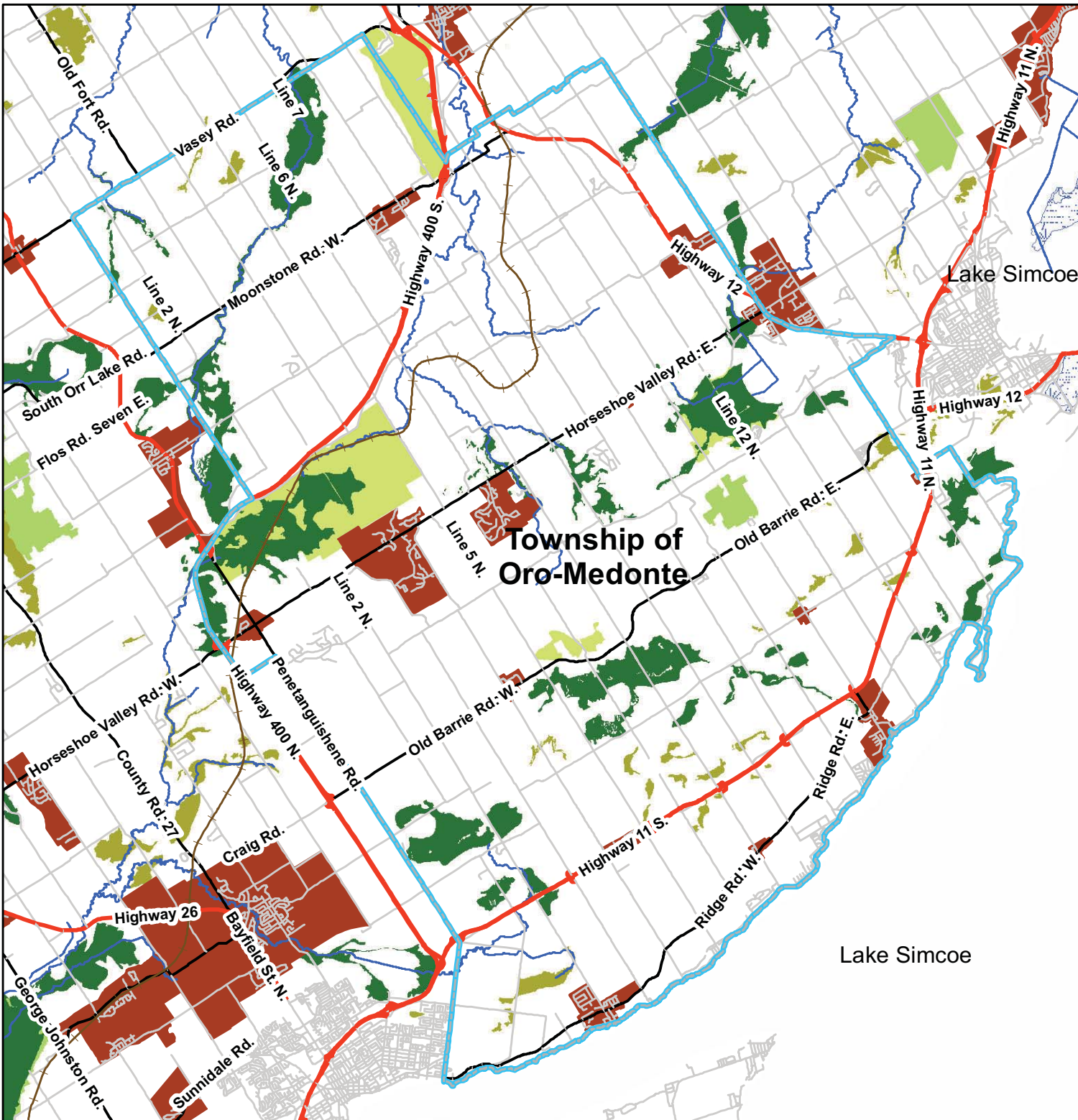
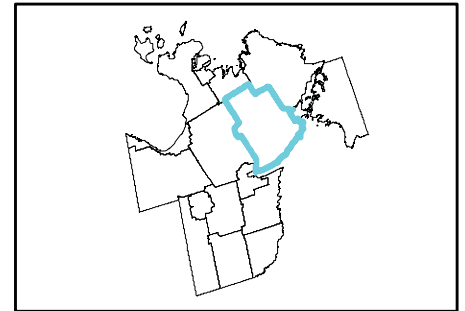
- Water Courses
- Railway Active
- Railway Non-Active
- Provincial Highway
- County Road
- LOCAL
- Niagara Escarpment Plan Boundary
- Oak Ridges Moraine Area
- Provincially Significant Wetland
- Locally Significant Wetland
- Marsh
- Provincial ANSI
- Regional ANSI
- Settlement Areas
- Municipal Border

1:45,000

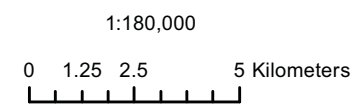



This map, either in whole or in part, may not be reproduced without the written authority from the County of Simcoe. Copyright ©, County of Simcoe Land Information Network Cooperative - LINC, 2010.
Produced in part under license from the City of Barrie & Orillia, the Ontario Ministry of Natural Resources (Copyright ©, Queen's Printer 2010), i2iSource Enterprises Inc. and its suppliers all rights reserved, and Members of the Ontario Geospatial Data Exchange.
THIS IS NOT A PLAN OF SURVEY.
For information call (705) 726-9300 or visit www.simcoe.ca

NH-14 Oro-Medonte Simcoe County Official Plan Natural Heritage Features Transportation Corridors

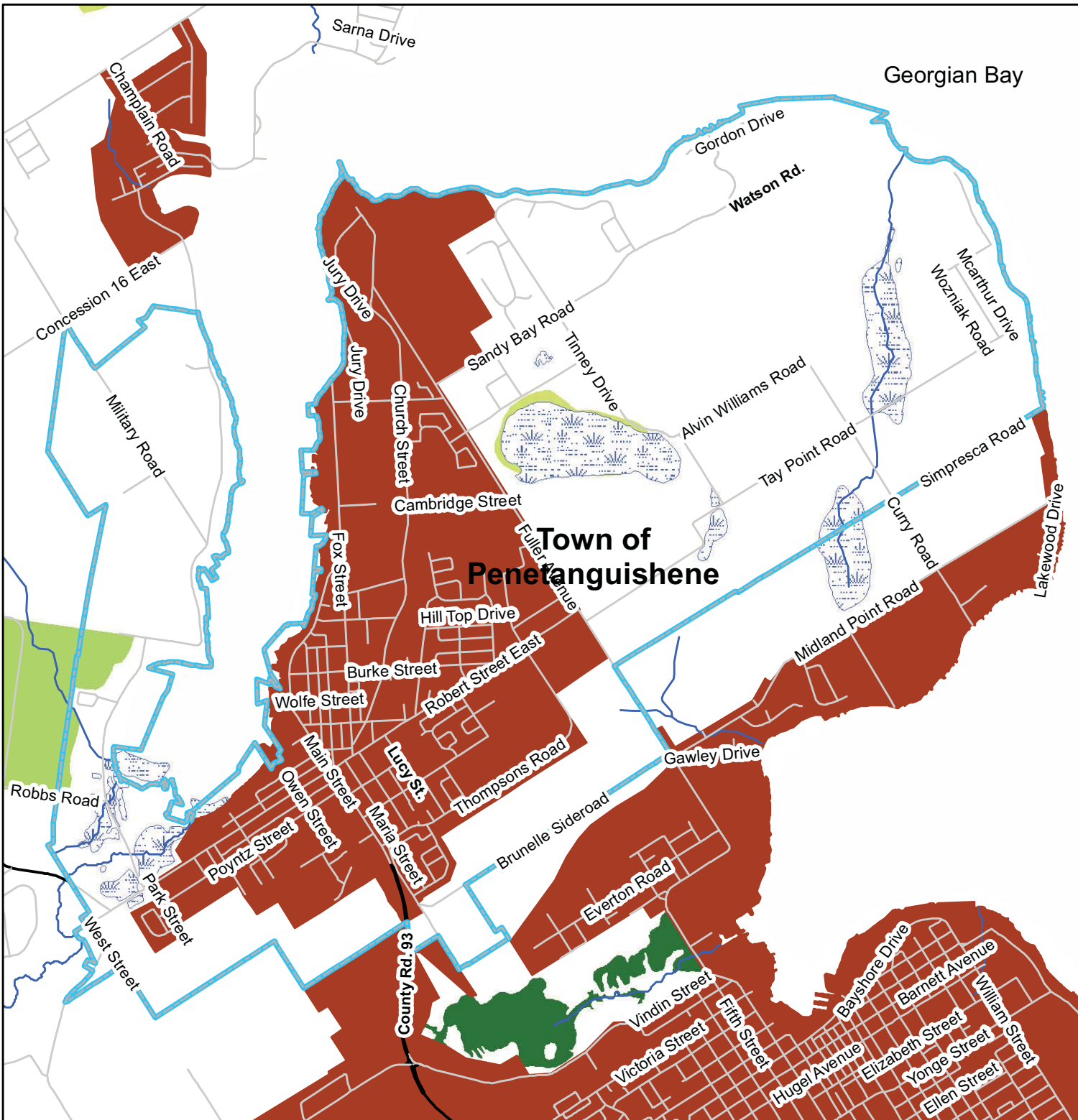
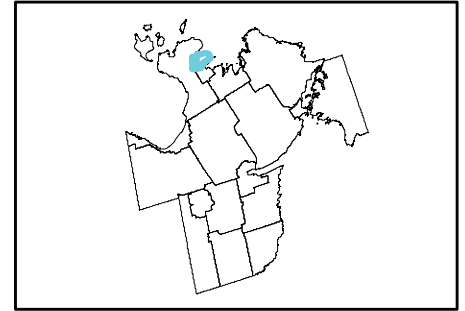


- Legend**
- Water Courses
 - Railway Active
 - Railway Non-Active
 - Provincial Highway
 - County Road
 - LOCAL
 - Niagara Escarpment Plan Boundary
 - Oak Ridges Moraine Area
 - Provincially Significant Wetland
 - Locally Significant Wetland
 - Marsh
 - Provincial ANSI
 - Regional ANSI
 - Settlement Areas
 - Municipal Border

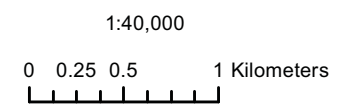



This map, either in whole or in part, may not be reproduced without the written authority from the County of Simcoe, Copyright ©, County of Simcoe Land Information Network Cooperative - LINC, 2010.
Produced in part under license from the City of Barrie & Orillia, the Ontario Ministry of Natural Resources (Copyright ©, Queen's Printer 2010), iGeoSource Enterprises Inc. and its suppliers, all rights reserved, and Members of the Ontario Geospatial Data Exchange.
THIS IS NOT A PLAN OF SURVEY.
 For information call (705) 726-9300 or visit www.simcoe.ca

NH-15 Penetanguishene Simcoe County Official Plan Natural Heritage Features Transportation Corridors

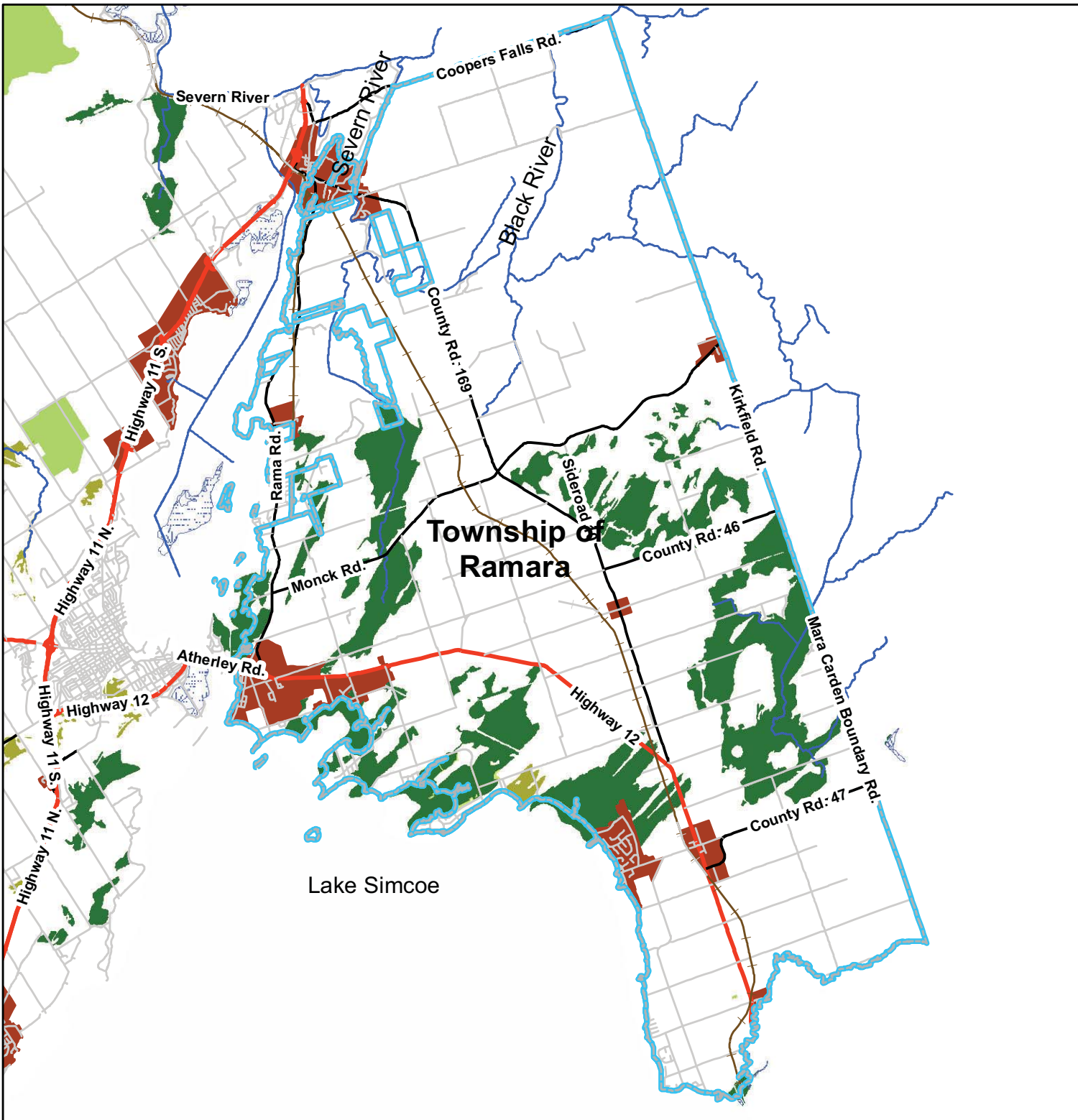
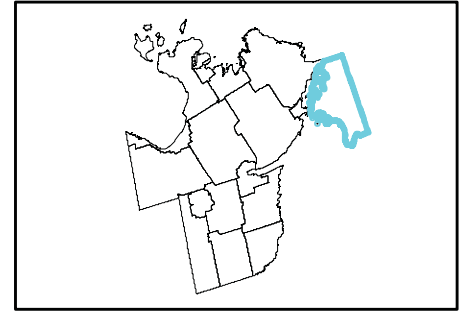


- Legend**
- Water Courses
 - Railway Active
 - Railway Non-Active
 - Provincial Highway
 - County Road
 - LOCAL
 - Niagara Escarpment Plan Boundary
 - Oak Ridges Moraine Area
 - Provincially Significant Wetland
 - Locally Significant Wetland
 - Marsh
 - Provincial ANSI
 - Regional ANSI
 - Settlement Areas
 - Municipal Border



 This map, either in whole or in part, may not be reproduced without the written authority from the County of Simcoe, Copyright ©, County of Simcoe Land Information Network Cooperative - LINC, 2010.
Produced in part under license from the City of Barrie & Orillia, the Ontario Ministry of Natural Resources (Copyright © Queen's Printer 2010), Wetmore Enterprises Inc. and its suppliers all rights reserved, and Members of the Ontario Geospatial Data Exchange.
THIS IS NOT A PLAN OF SURVEY.
For information call (705) 726-9300 or visit www.simcoe.ca

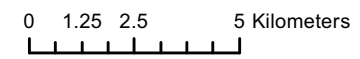
Simcoe County Official Plan
Natural Heritage Features
Transportation Corridors



Legend

- Water Courses
- Railway Active
- Railway Non-Active
- Provincial Highway
- County Road
- LOCAL
- Niagara Escarpment Plan Boundary
- Oak Ridges Moraine Area
- Provincially Significant Wetland
- Locally Significant Wetland
- Marsh
- Provincial ANSI
- Regional ANSI
- Settlement Areas
- Municipal Border

1:180,000



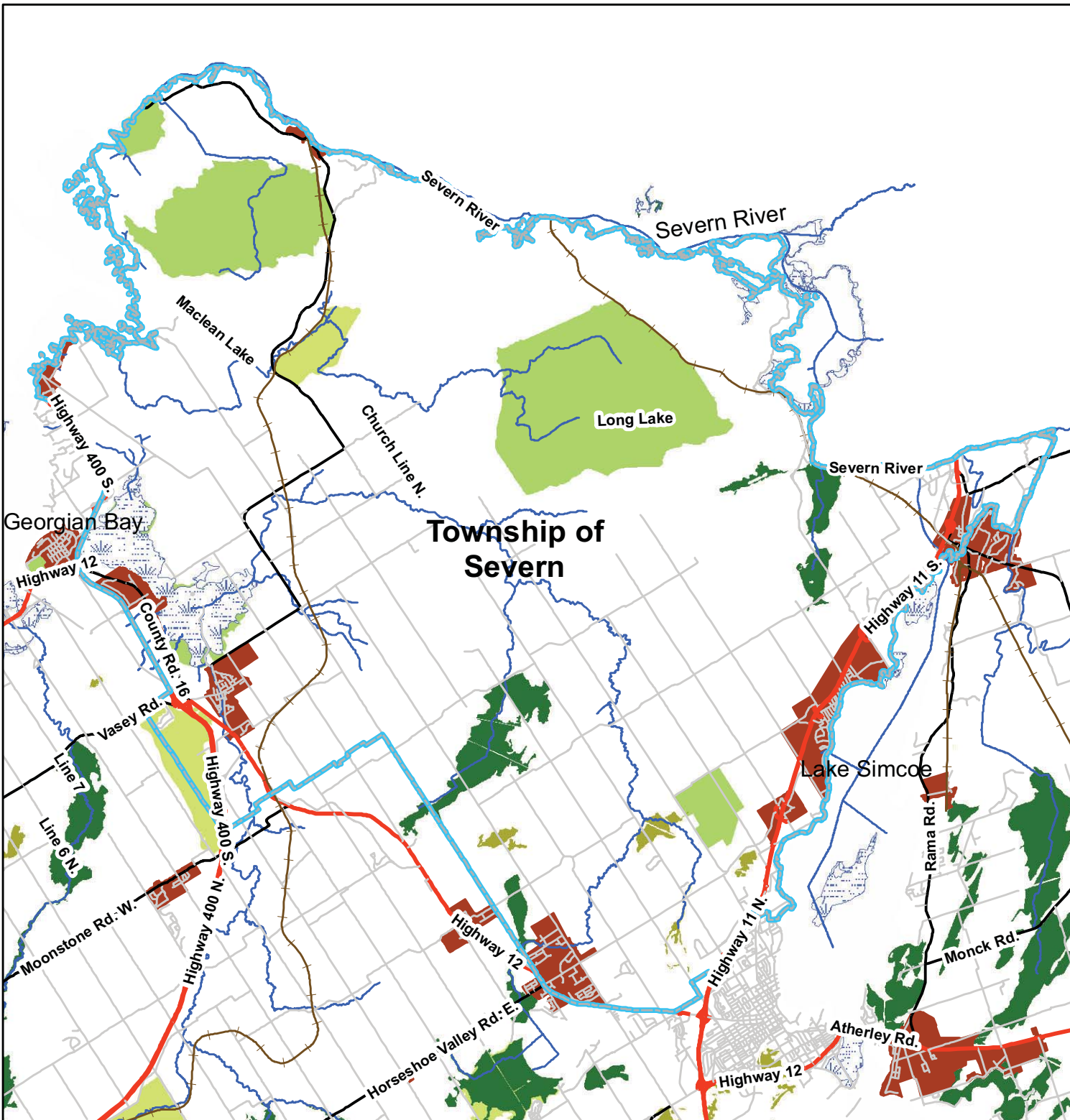
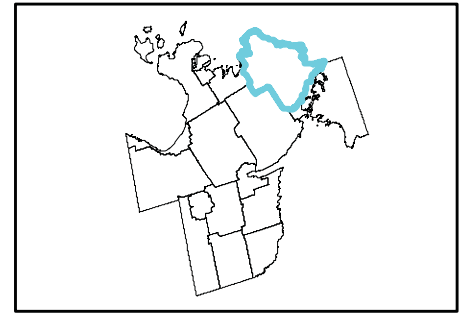
This map, either in whole or in part, may not be reproduced without the written authority from the County of Simcoe, Copyright ©, County of Simcoe Land Information Network Cooperative - LINC, 2010.

Produced in part under license from the City of Barris & Orsini, the Ontario Ministry of Natural Resources (Copyright - Queen's Printer 2010), iGeoSource Enterprises Inc. and its suppliers, all rights reserved, and Members of the Ontario Geospatial Data Exchange.

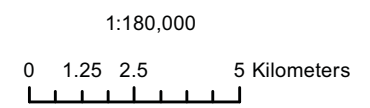
THIS IS NOT A PLAN OF SURVEY.


For information call (705) 726-9300 or visit www.simcoe.ca

Simcoe County Official Plan
Natural Heritage Features
Transportation Corridors

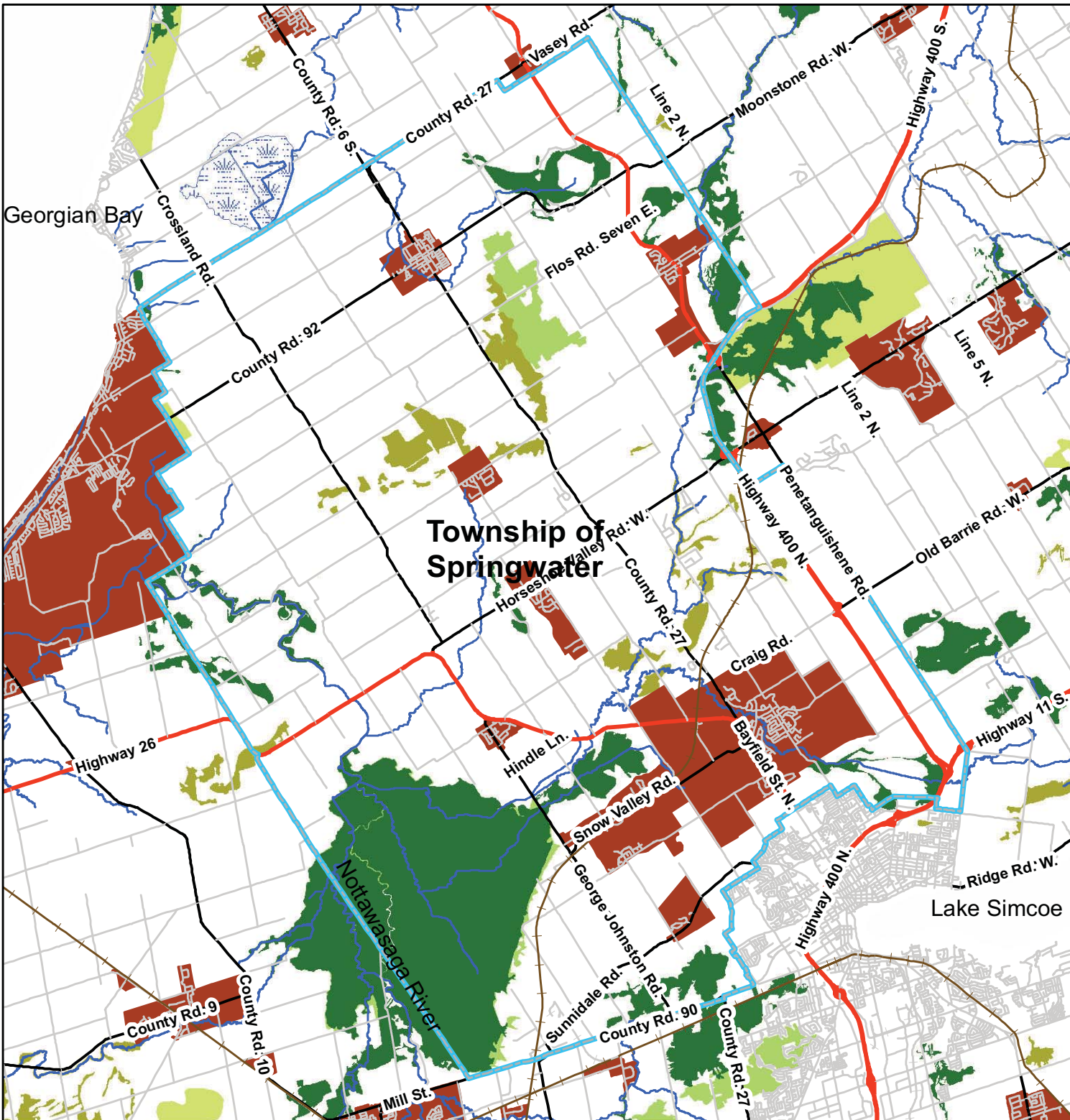
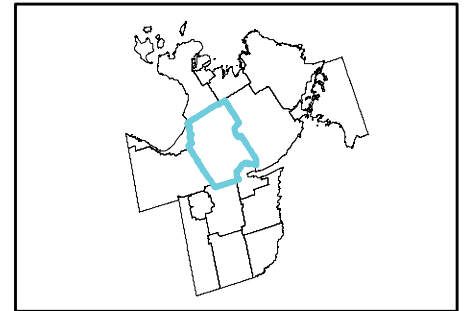


- Legend**
- Water Courses
 - Railway Active
 - Railway Non-Active
 - Provincial Highway
 - County Road
 - LOCAL
 - Niagara Escarpment Plan Boundary
 - Oak Ridges Moraine Area
 - Provincially Significant Wetland
 - Locally Significant Wetland
 - Marsh
 - Provincial ANSI
 - Regional ANSI
 - Settlement Areas
 - Municipal Border

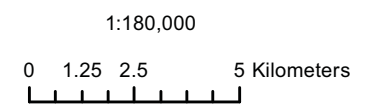


 This map, either in whole or in part, may not be reproduced without the written authority from the County of Simcoe, Copyright ©, County of Simcoe Land Information Network Cooperative - LINC, 2010.
Produced in part under license from the City of Barrie & Orillia, the Ontario Ministry of Natural Resources (Copyright ©, Queen Printer 2010), i2iSource Enterprises Inc., and its suppliers all rights reserved, and Members of the Ontario Geospatial Data Exchange.
THIS IS NOT A PLAN OF SURVEY.
For information call (905) 26-9309 or visit www.simcoe.ca

NH-18 Springwater Simcoe County Official Plan Natural Heritage Features Transportation Corridors



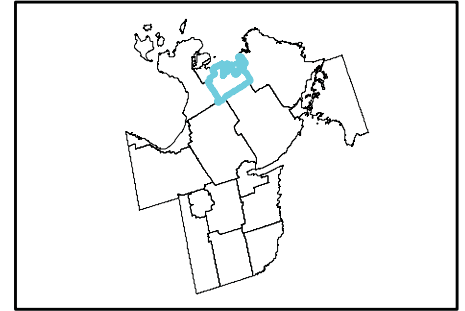
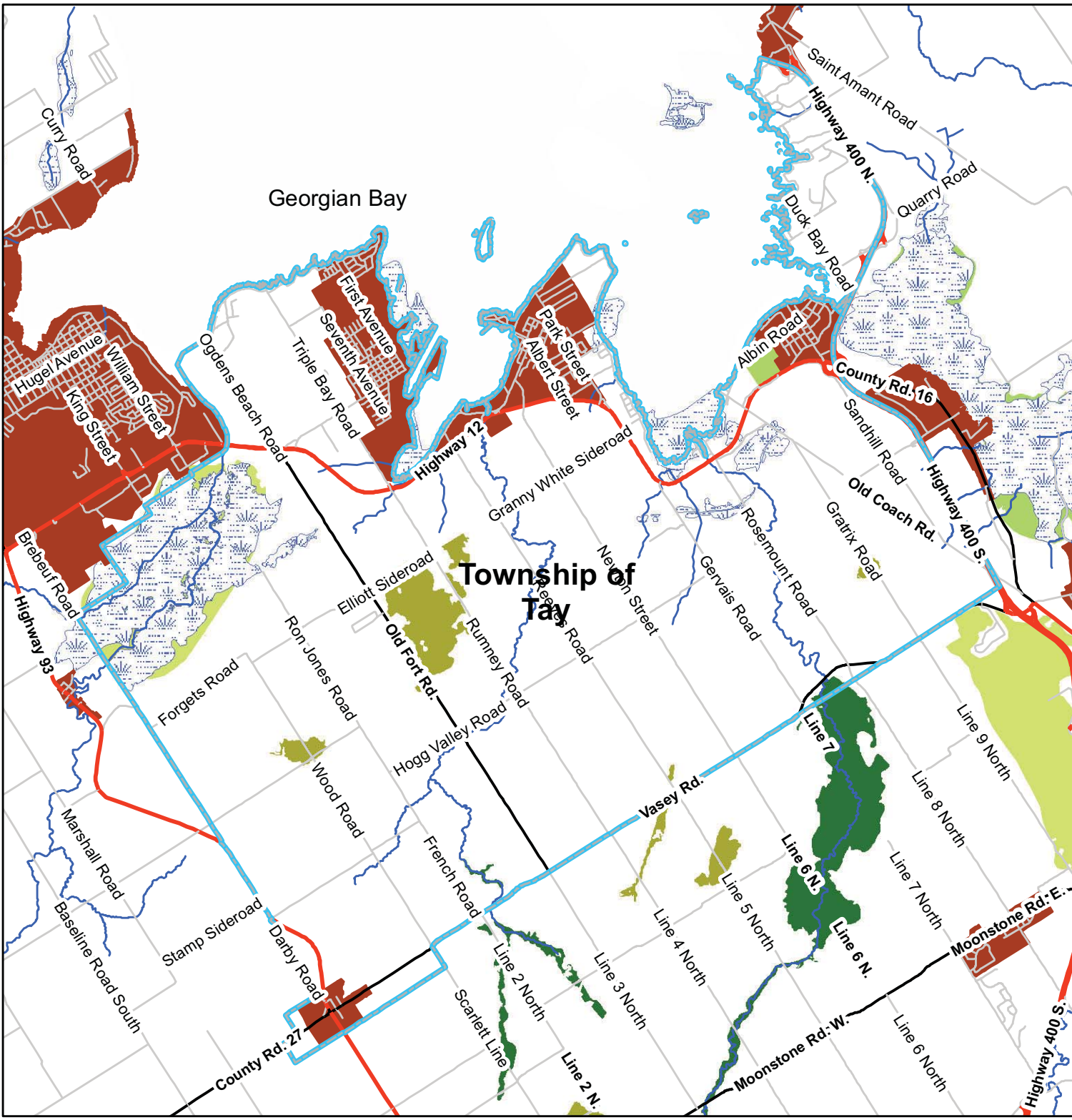
- Legend**
- Water Courses
 - Railway Active
 - Railway Non-Active
 - Provincial Highway
 - County Road
 - LOCAL
 - Niagara Escarpment Plan Boundary
 - Oak Ridges Moraine Area
 - Provincially Significant Wetland
 - Locally Significant Wetland
 - Marsh
 - Provincial ANSI
 - Regional ANSI
 - Settlement Areas
 - Municipal Border



LINC
LAND INFORMATION NETWORK COOPERATIVE

This map, either in whole or in part, may not be reproduced without the written authority from the County of Simcoe. Copyright © County of Simcoe Land Information Network Cooperative - LINC, 2010.
Produced in part under license from the City of Barrie & Orillia, the Ontario Ministry of Natural Resources (Copyright © Queen's Printer 2010), i2iSource Enterprises Inc. and its suppliers all rights reserved, and Members of the Ontario Geospatial Data Exchange.
THIS IS NOT A PLAN OF SURVEY.
For information call (905) 726-9300 or visit www.simcoe.ca

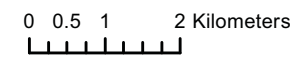
Simcoe County Official Plan Natural Heritage Features Transportation Corridors



Legend

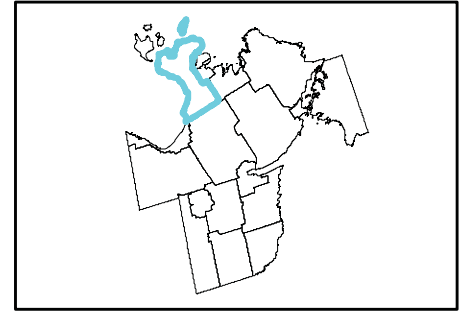
- Water Courses
- Railway Active
- Railway Non-Active
- Provincial Highway
- County Road
- LOCAL
- Niagara Escarpment Plan Boundary
- Oak Ridges Moraine Area
- Provincially Significant Wetland
- Locally Significant Wetland
- Marsh
- Provincial ANSI
- Regional ANSI
- Settlement Areas
- Municipal Border

1:100,000



This map, either in whole or in part, may not be reproduced without the written authority from the County of Simcoe, Copyright ©, County of Simcoe Land Information Network Cooperative - LINC, 2010.
Produced in part under license from the City of Barrie & Orillia, the Ontario Ministry of Natural Resources (Copyright ©, Queen's Printer 2010), ©Tiscare Enterprises Inc. and its suppliers, all rights reserved, and Members of the Ontario Geospatial Data Exchange.
THIS IS NOT A PLAN OF SURVEY.
For information call (705) 726-9300 or visit www.simcoe.ca

Simcoe County Official Plan
Natural Heritage Features
Transportation Corridors

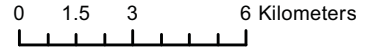



Georgian Bay

Legend

- Water Courses
- Railway Active
- Railway Non-Active
- Provincial Highway
- County Road
- LOCAL
- Niagara Escarpment Plan Boundary
- Oak Ridges Moraine Area
- Provincially Significant Wetland
- Locally Significant Wetland
- Marsh
- Provincial ANSI
- Regional ANSI
- Settlement Areas
- Municipal Border

1:200,000



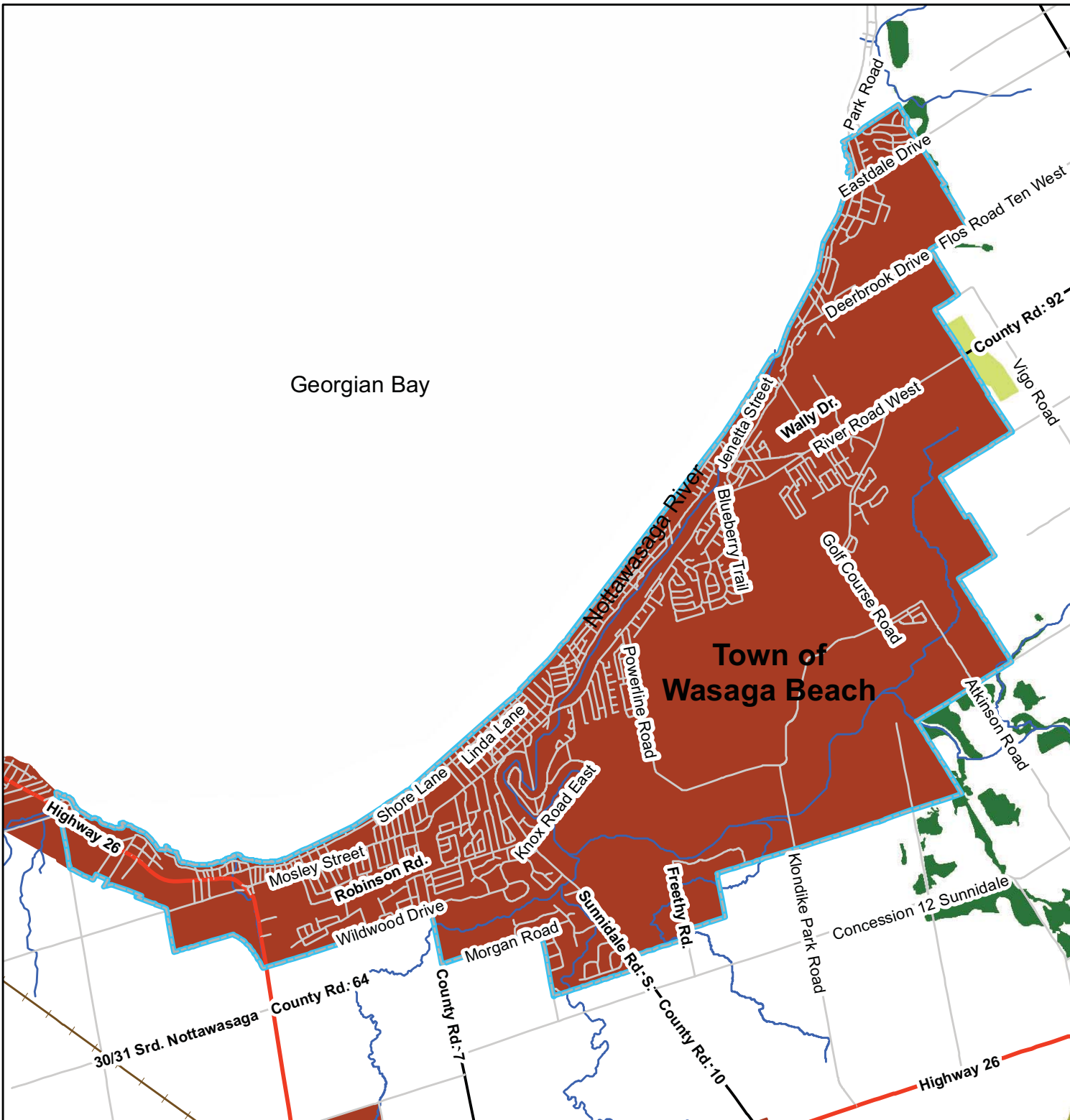
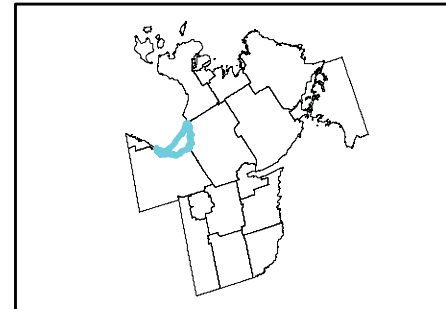
 This map, either in whole or in part, may not be reproduced without the written authority from the County of Simcoe, Copyright ©, County of Simcoe Land Information Network Cooperative - LINC, 2010.

Produced in part under license from the City of Barrie & Orillia, the Ontario Ministry of Natural Resources (Copyright ©, Queen's Printer 2010), ©Tiscare Enterprises Inc., and its suppliers, all rights reserved, and Members of the Ontario Geospatial Data Exchange.

THIS IS NOT A PLAN OF SURVEY.

For information call (705) 726-9300 or visit www.simcoe.ca

NH-21 Wasaga Beach Simcoe County Official Plan Natural Heritage Features Transportation Corridors



Georgian Bay

**Town of
Wasaga Beach**

Legend

- Water Courses
- Railway Active
- Railway Non-Active
- Provincial Highway
- County Road
- LOCAL
- Niagara Escarpment Plan Boundary
- Oak Ridges Moraine Area
- Provincially Significant Wetland
- Locally Significant Wetland
- Marsh
- Provincial ANSI
- Regional ANSI
- Settlement Areas
- Municipal Border

1:80,000



This map, either in whole or in part, may not be reproduced without the written authority from the County of Simcoe, Copyright © Simcoe Land Information Network Cooperative - LINC, 2010.

Produced in part under license from the City of Barrie & Orillia, the Ontario Ministry of Natural Resources (Copyright © Queen's Printer 2010), i2iSource Enterprises Inc., and its suppliers, all rights reserved, and Members of the Ontario Geospatial Data Exchange.

THIS IS NOT A PLAN OF SURVEY.

For information call (705) 726-9300 or visit www.simcoe.ca