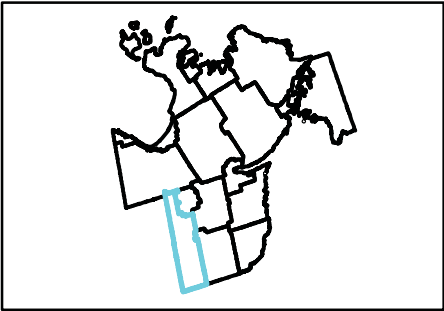


**APPENDIX A-2: COUNTY OF SIMCOE AND SURROUNDING  
AREA: EXISTING LAND USE DESIGNATIONS  
FIGURES**

---

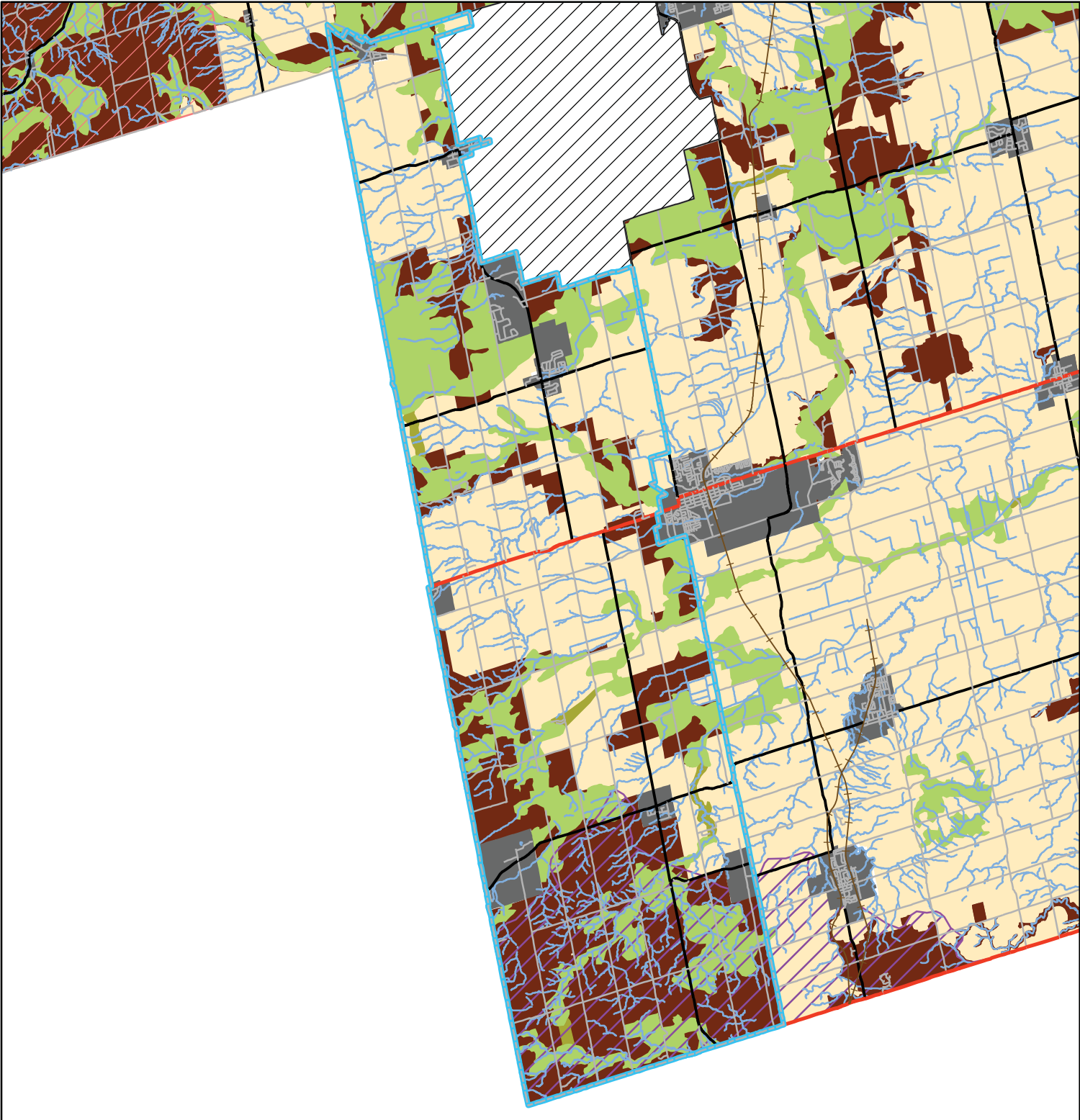
# LU-1 Adjala-Tosorontio Simcoe County Official Plan Land Use Designations 2008 (DRAFT)



### Legend

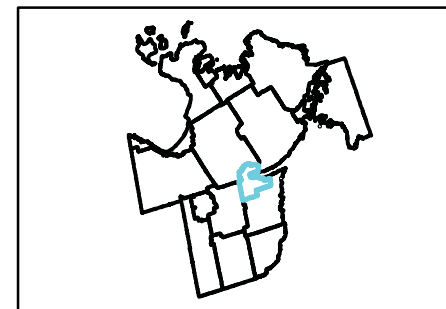
- Railway Active
- Railway Non-Active
- Provincial Highway
- County Road
- Local Road
- Major Rivers
- Agricultural
- Rural
- Lands Not Subject to This Plan
- Niagara Escarpment Plan Boundary
- Oak Ridges Moraine Area
- Greenland
- Potential Greenland Linkages
- Settlement Areas
- Municipal Border

1:200,000



# LU-2 Barrie

## Simcoe County Official Plan Land Use Designations 2008 (DRAFT)




### Legend

- Railway Active
- Railway Non-Active
- Provincial Highway
- County Road
- Local Road
- Major Rivers
- Niagara Escarpment Plan Boundary
- Oak Ridges Moraine Area
- Greenland
- Potential Greenland Linkages
- Agricultural
- Rural
- Lands Not Subject to This Plan
- Settlement Areas
- Municipal Border

1:80,000

0 0.5 1 2 Kilometers



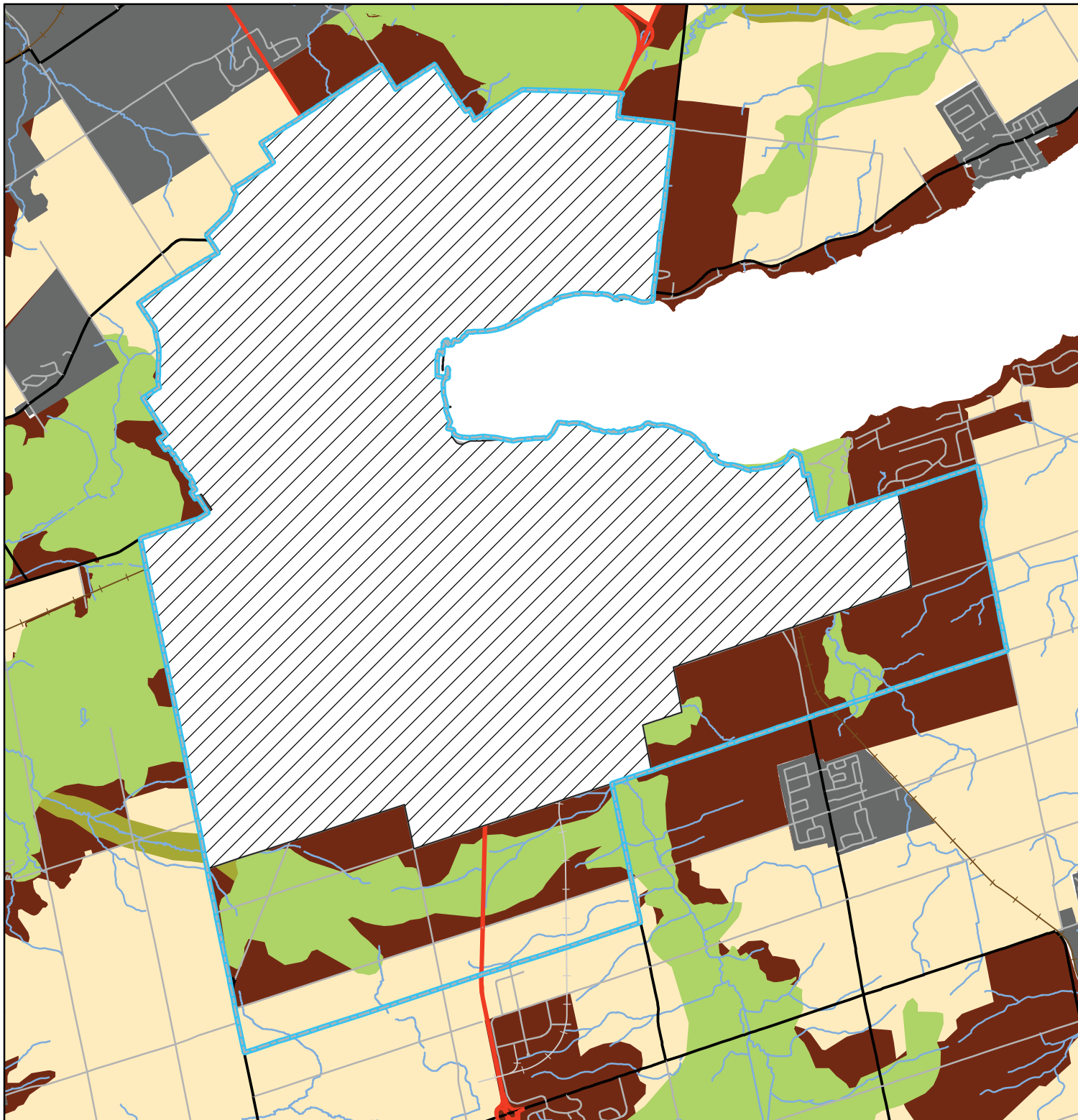


This map, either in whole or in part, may not be reproduced without the written authority from the County of Simcoe. Copyright © County of Simcoe Land Information Network Cooperative - LINC 2010

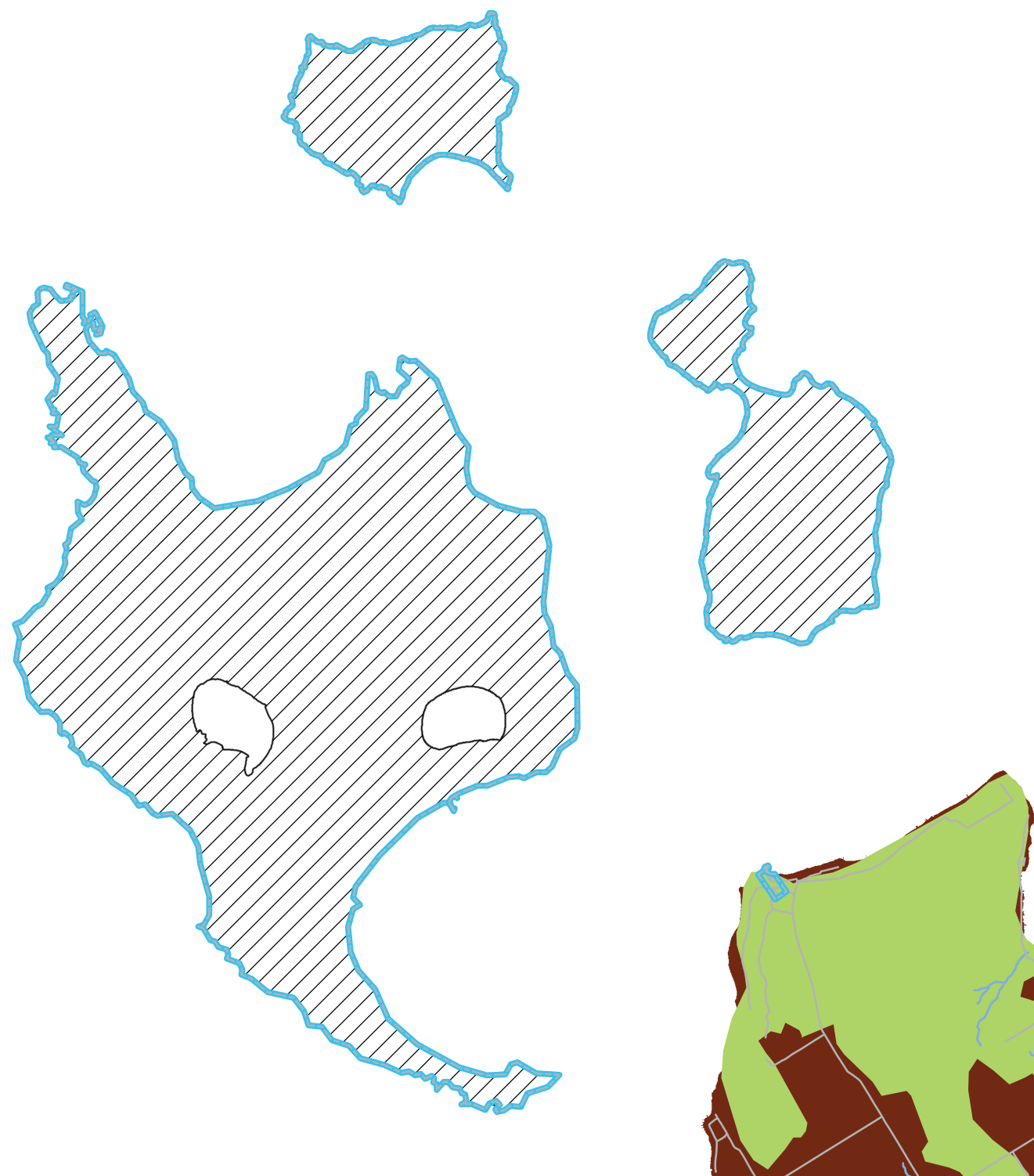
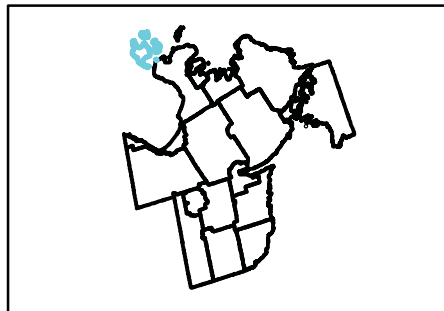
Produced in part under license from: the Cities of Barrie & Orillia, the Ontario Ministry of Natural Resources (Copyright - Queen Printer 2010), ©Teramet Enterprises Inc. and its suppliers all rights reserved, and Members of the Ontario Geospatial Data Exchange.

**THIS IS NOT A PLAN OF SURVEY.**

For information call (705) 726-9300 or visit [www.simcoe.ca](http://www.simcoe.ca)



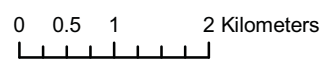
# LU-3 Beausoleil Simcoe County Official Plan Land Use Designations 2008 (DRAFT)




## Legend

- Railway Active
- Railway Non-Active
- Provincial Highway
- County Road
- Local Road
- Major Rivers
- Niagara Escarpment Plan Boundary
- Oak Ridges Moraine Area
- Greenland
- Potential Greenland Linkages
- Agricultural
- Rural
- Lands Not Subject to This Plan
- Settlement Areas
- Municipal Border

1:80,000





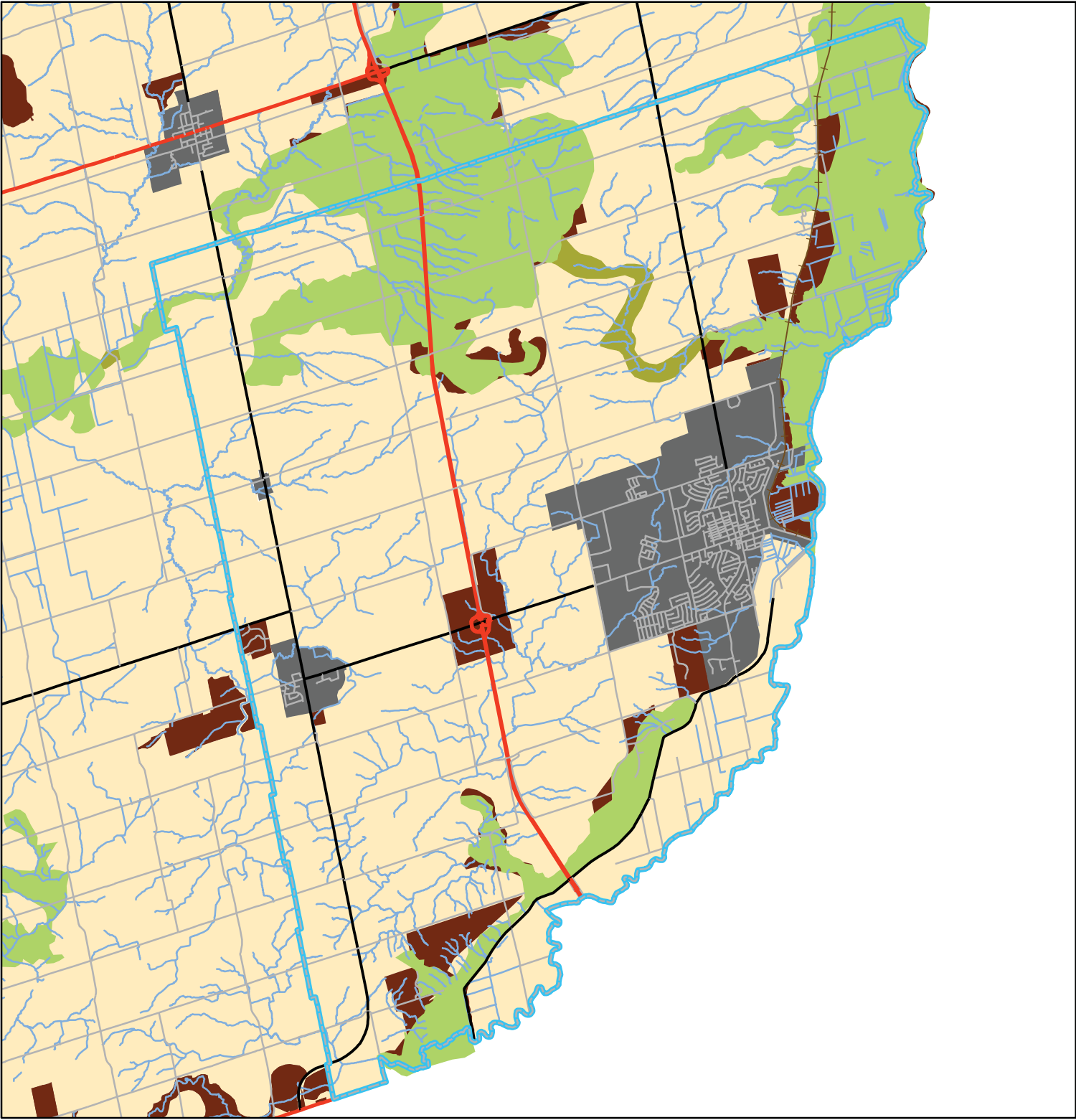
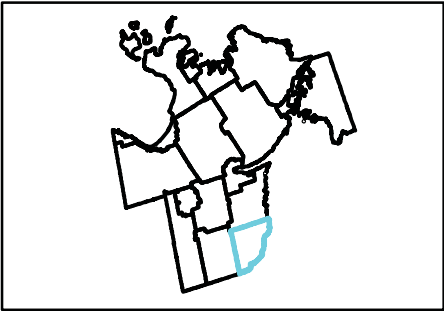
This map, either in whole or in part, may not be reproduced without the written authority from the County of Simcoe, Copyright © County of Simcoe Land Information Network Cooperative - LINC 2010

Produced in part under license from: the Cities of Barrie & Orillia, the Ontario Ministry of Natural Resources (Copyright - Queen Printer 2010), ©Teramet Enterprises Inc. and its suppliers all rights reserved, and Members of the Ontario Geospatial Data Exchange.

**THIS IS NOT A PLAN OF SURVEY.**

For information call (705) 726-9300 or visit [www.simcoe.ca](http://www.simcoe.ca)

# LU-4 Bradford West Gwillimbury Simcoe County Official Plan Land Use Designations 2008 (DRAFT)




### Legend

- Railway Active
- Railway Non-Active
- Provincial Highway
- County Road
- Local Road
- Major Rivers
- Niagara Escarpment Plan Boundary
- Oak Ridges Moraine Area
- Greenland
- Potential Greenland Linkages
- Agricultural
- Rural
- Lands Not Subject to This Plan
- Settlement Areas
- Municipal Border

1:110,000

0.37575 1.5 Kilometers





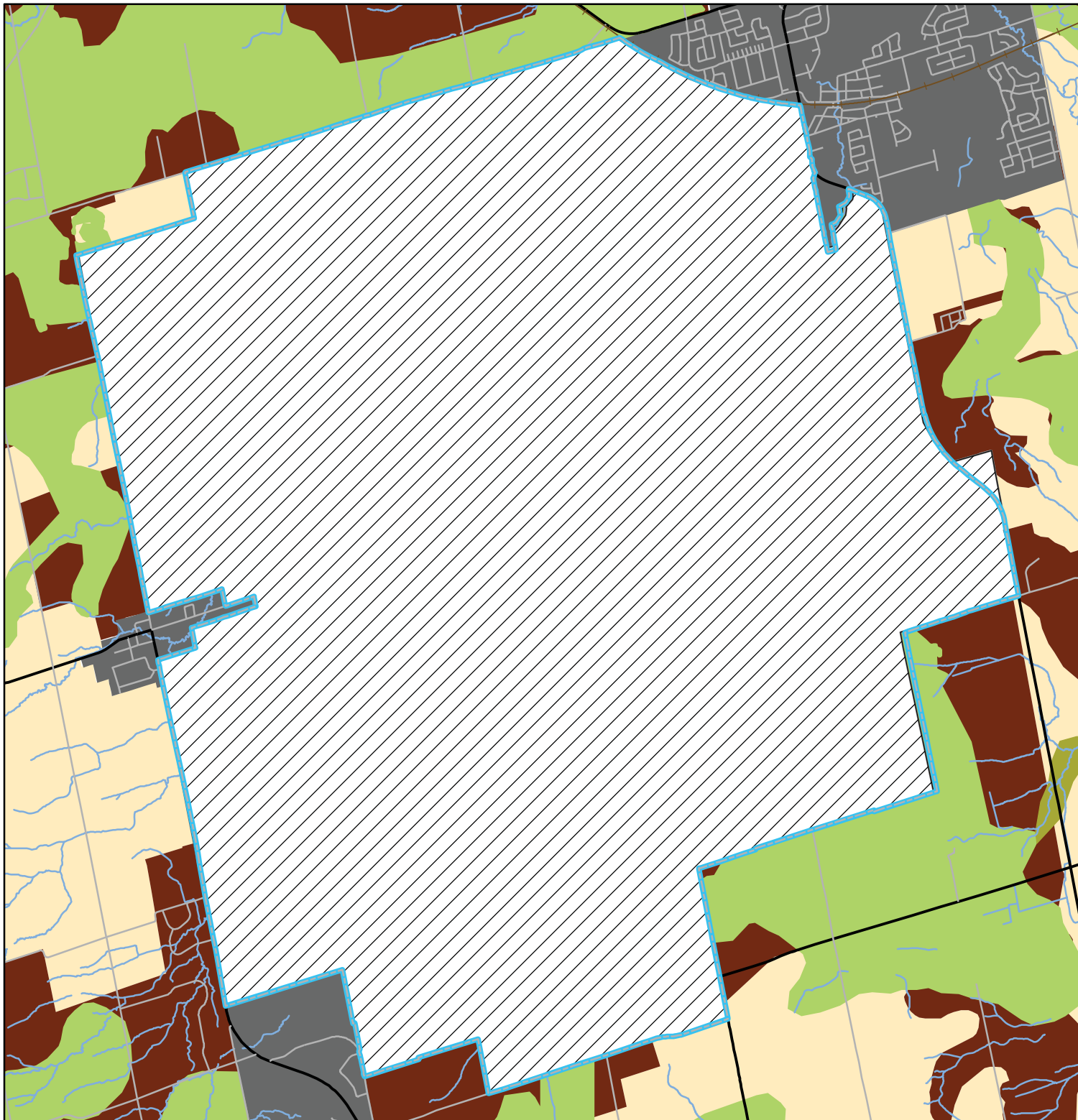
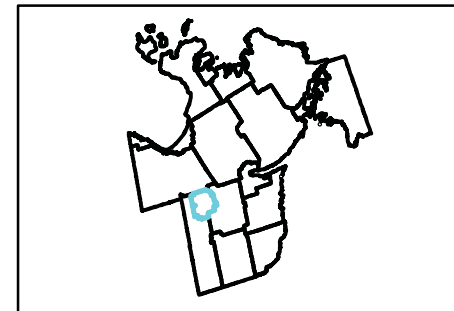
This map, either in whole or in part, may not be reproduced without the written authority from the County of Simcoe, Copyright © County of Simcoe Land Information Network Cooperative - LINC 2010

Produced in part under license from: the Cities of Barrie & Orillia, the Ontario Ministry of Natural Resources (Copyright - Queen's Printer 2010), ©Teramet Enterprises Inc. and its suppliers all rights reserved, and Members of the Ontario Geospatial Data Exchange.

**THIS IS NOT A PLAN OF SURVEY.**

For information call (705) 726-9300 or visit [www.simcoe.ca](http://www.simcoe.ca)

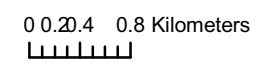
**LU-5  
CFB Borden  
Simcoe County Official Plan  
Land Use Designations  
2008 (DRAFT)**



**Legend**

- Railway Active
- Railway Non-Active
- Provincial Highway
- County Road
- Local Road
- Major Rivers
- Niagara Escarpment Plan Boundary
- Oak Ridges Moraine Area
- Greenland
- Potential Greenland Linkages
- Agricultural
- Rural
- Lands not subject to this plan
- Settlement Areas
- Municipal Border

1:60,000



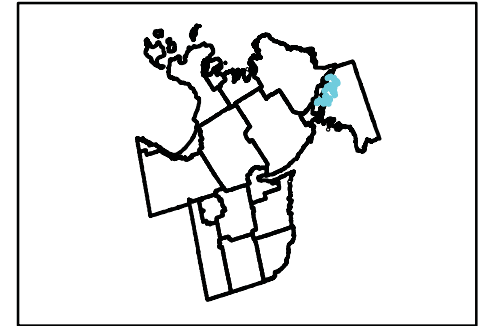
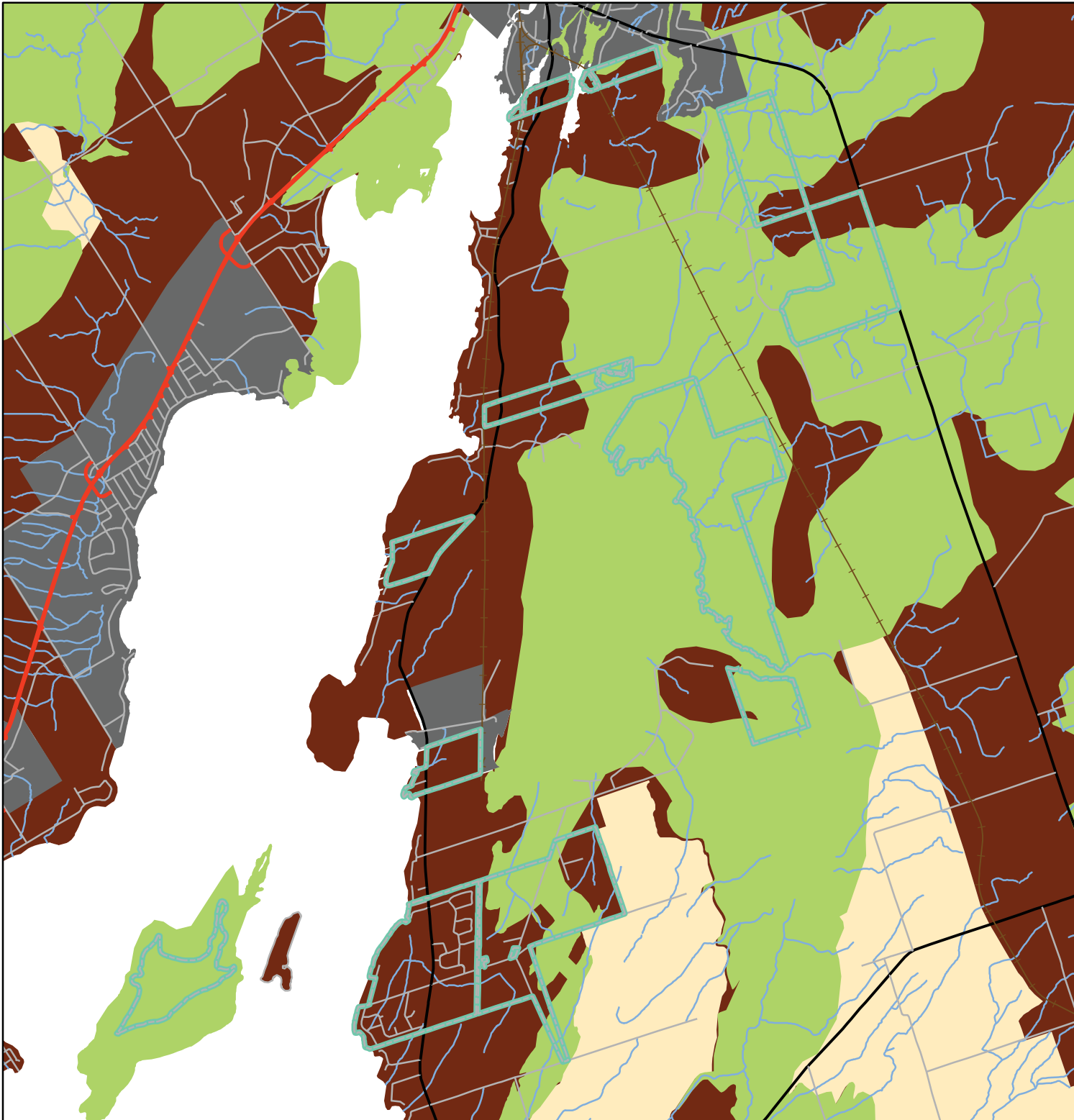
This map, either in whole or in part, may not be reproduced without the written authority from the County of Simcoe. Copyright © County of Simcoe Land Information Network Cooperative - LINC 2010

Produced in part under license from: the Cities of Barrie & Orillia, the Ontario Ministry of Natural Resources (Copyright - Queen's Printer 2010), ©Teranet Enterprises Inc. and its suppliers all rights reserved, and Members of the Ontario Geospatial Data Exchange.

**THIS IS NOT A PLAN OF SURVEY.**

For information call (705) 726-9300 or visit [www.simcoe.ca](http://www.simcoe.ca)

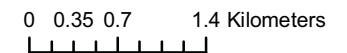
# Chippewas of Rama Simcoe County Official Plan Land Use Designations 2008 (DRAFT)



## Legend

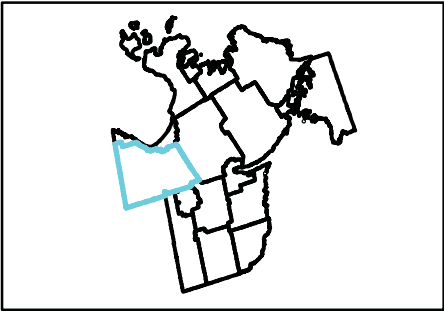
- Railway Active
- Railway Non-Active
- Provincial Highway
- County Road
- Local Road
- Major Rivers
- Niagara Escarpment Plan Boundary
- Oak Ridges Moraine Area
- Greenland
- Potential Greenland Linkages
- Settlement Areas
- Agricultural
- Rural
- Lands not subject to this plan
- Municipal Border

1:60,000



This map, either in whole or in part may not be reproduced without the written authority from the County of Simcoe, Copyright © County of Simcoe Land Information Network Cooperative - LINC 2010  
Produced in part under license from: the Cities of Barrie & Orillia, the Ontario Ministry of Natural Resources (Copyright - Queen Printer 2010), ©Teramet Enterprises Inc. and its suppliers all rights reserved, and Members of the Ontario Geospatial Data Exchange.  
**THIS IS NOT A PLAN OF SURVEY.**  
For information call (705) 726-9300 or visit [www.simcoe.ca](http://www.simcoe.ca)

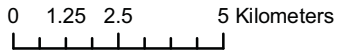
# LU-7 Clearview Simcoe County Official Plan Land Use Designations 2008 (DRAFT)




### Legend

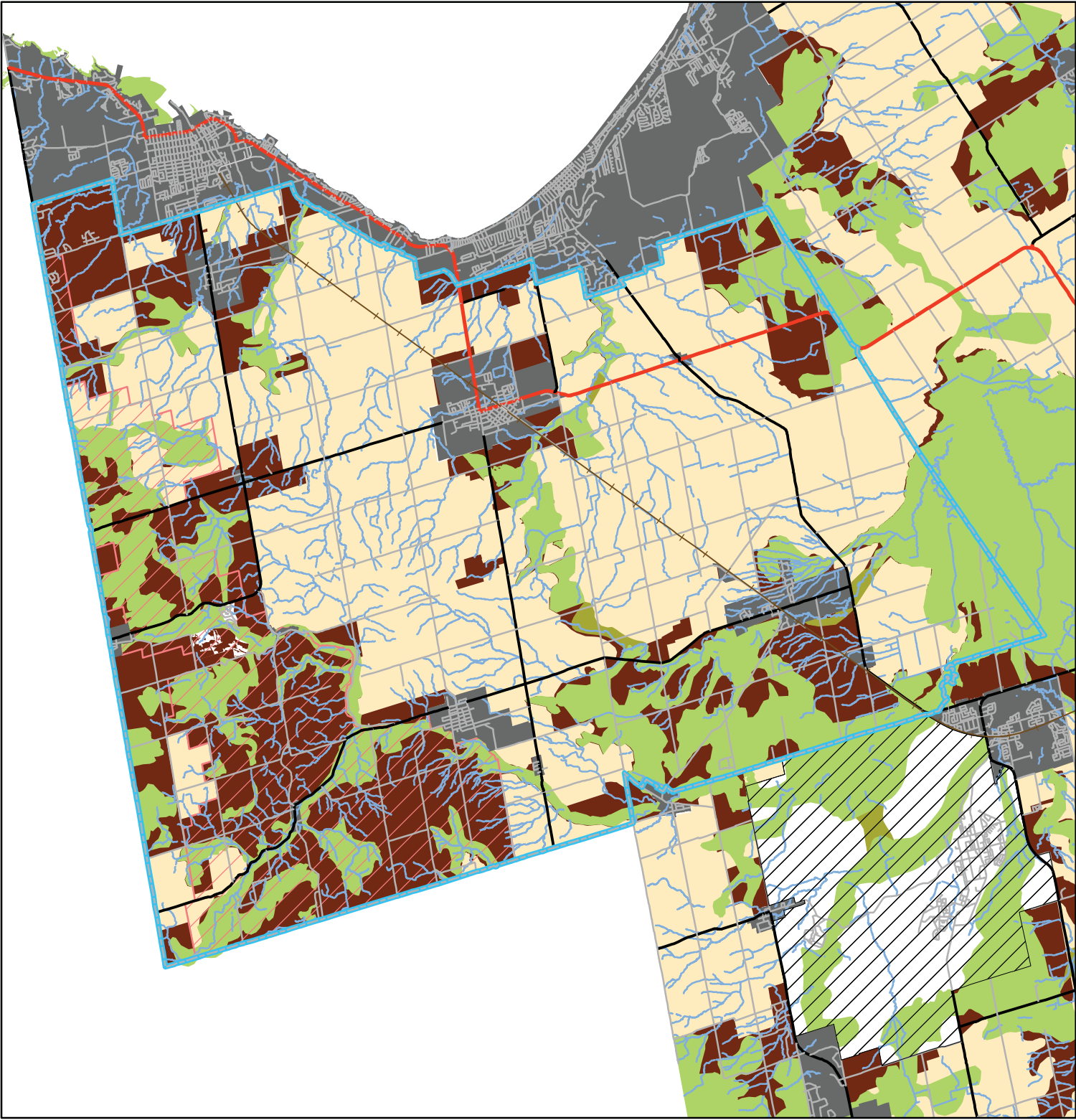
- Railway Active
- Railway Non-Active
- Provincial Highway
- County Road
- Local Road
- Major Rivers
- Niagara Escarpment Plan Boundary
- Oak Ridges Moraine Area
- Greenland
- Potential Greenland Linkages
- Settlement Areas
- Agricultural
- Rural
- Lands Not Subject to This Plan
- Municipal Border

1:180,000



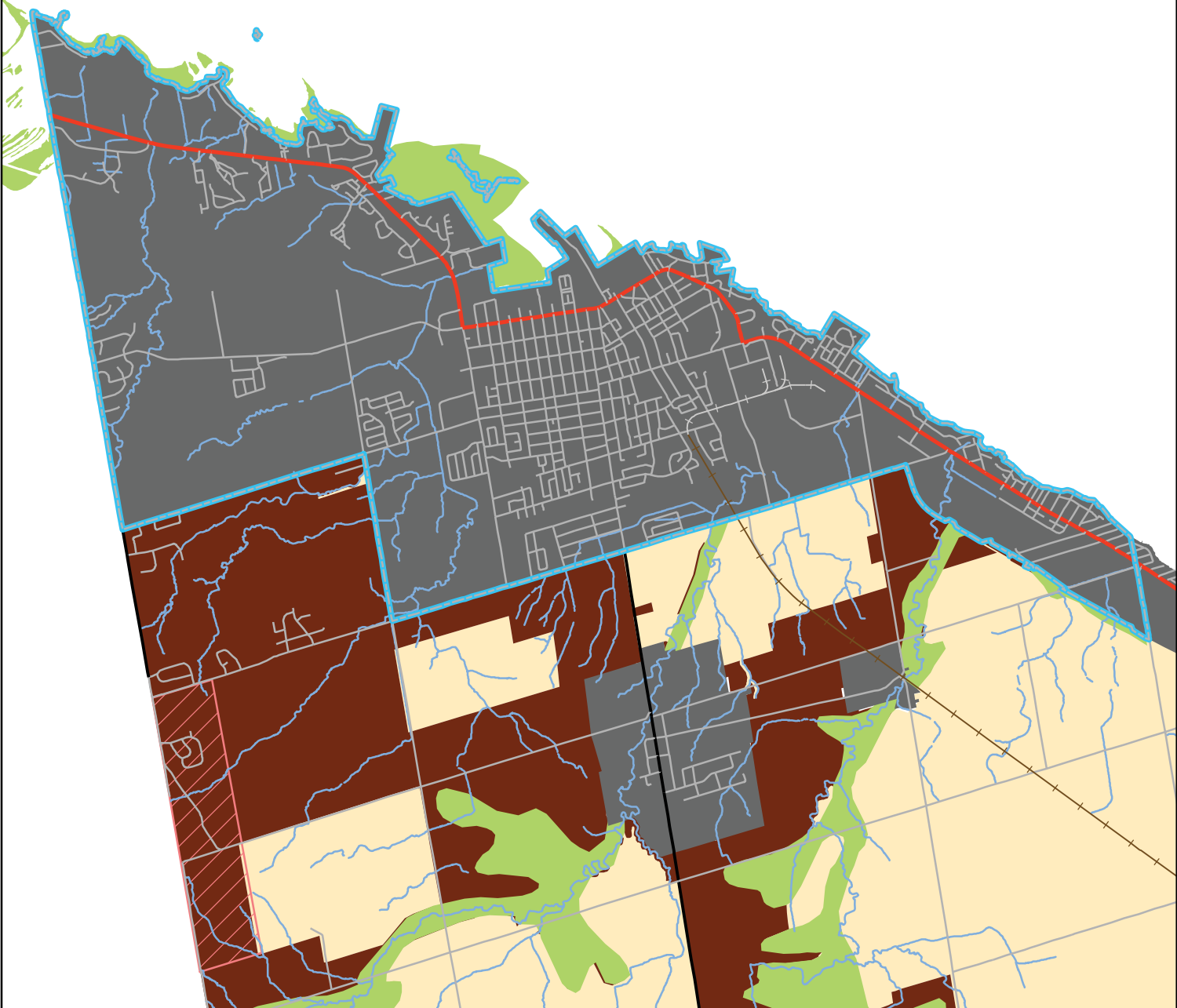
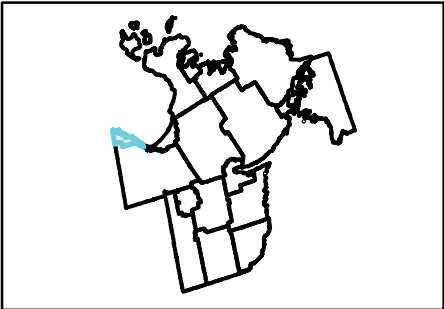


This map, either in whole or in part, may not be reproduced without the written authority from the County of Simcoe. Copyright © County of Simcoe  
Land Information Network Cooperative - LINC 2010  
Produced in part under license from: the Cities of Barrie & Orillia, the Ontario Ministry of Natural Resources (Copyright - Queen's Printer 2010), ©Teramet Enterprises Inc. and its suppliers all rights reserved, and Members of the Ontario Geospatial Data Exchange.  
**THIS IS NOT A PLAN OF SURVEY.**  
For information call (705) 726-9300 or visit [www.simcoe.ca](http://www.simcoe.ca)





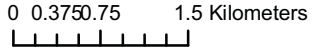
# LU-8 Collingwood Simcoe County Official Plan Land Use Designations 2008 (DRAFT)



### Legend

- Railway Active
- Railway Non-Active
- Provincial Highway
- County Road
- Local Road
- Major Rivers
- Niagara Escarpment Plan Boundary
- Oak Ridges Moraine Area
- Greenland
- Potential Greenland Linkages
- Settlement Areas
- Agricultural
- Rural
- Lands not subject to this plan
- Municipal Border

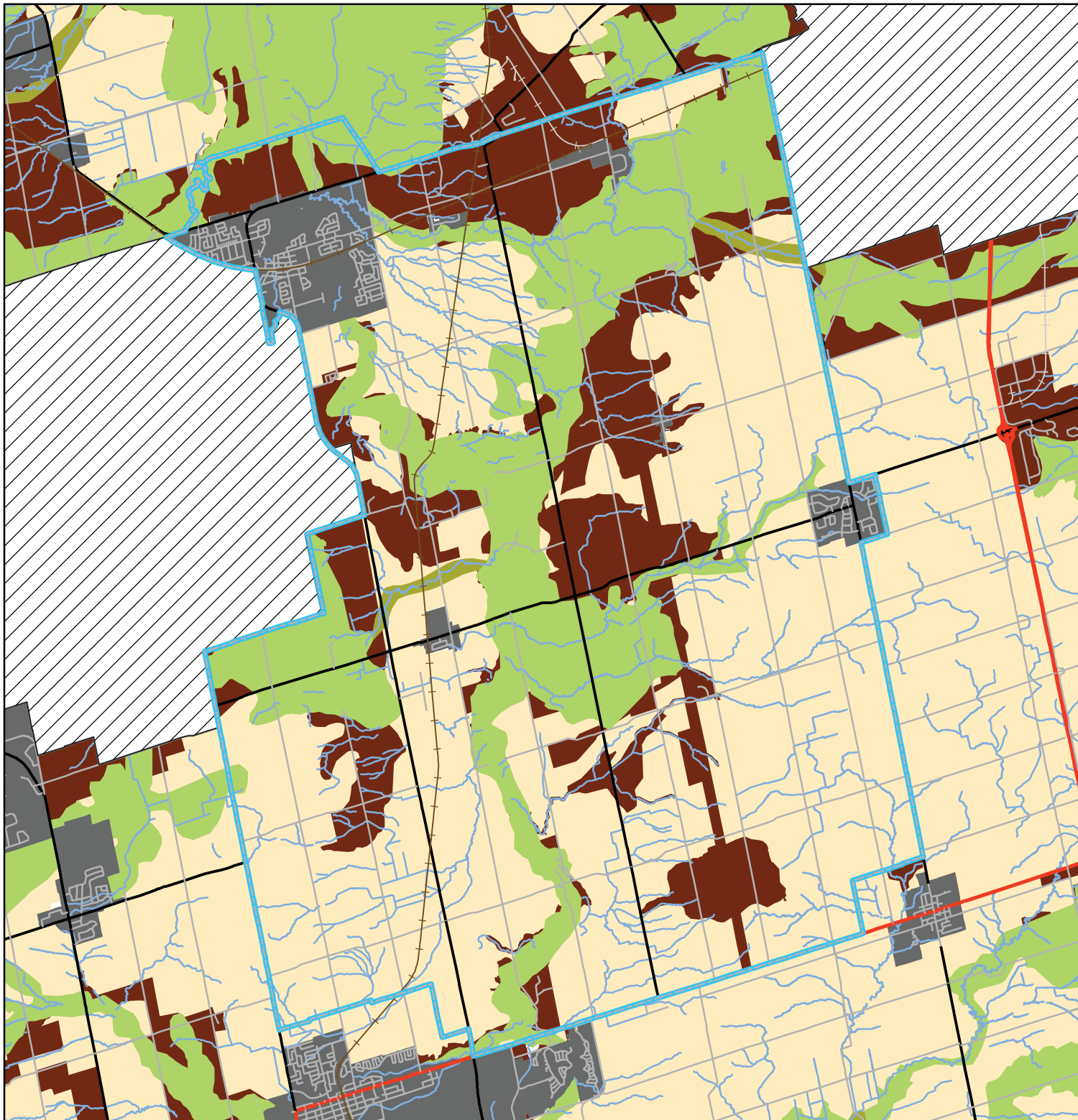
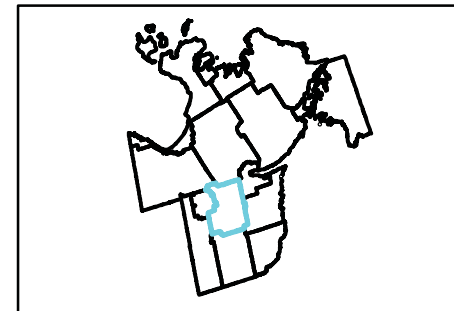
1:65,000



**LINC**  
LAND INFORMATION NETWORK COOPERATIVE

This map, either in whole or in part, may not be reproduced without the written authority from the County of Simcoe. Copyright © County of Simcoe Land Information Network Cooperative - LINC 2010  
Produced in part under license from: the Cities of Barrie & Orillia, the Ontario Ministry of Natural Resources (Copyright - Queen Printer 2010), ©Teramet Enterprises Inc. and its suppliers all rights reserved, and Members of the Ontario Geospatial Data Exchange.  
**THIS IS NOT A PLAN OF SURVEY.**  
For information call (705) 726-9300 or visit [www.simcoe.ca](http://www.simcoe.ca)

**LU-9  
Essa**  
**Simcoe County Official Plan  
Land Use Designations  
2008 (DRAFT)**

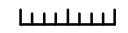


**Legend**

- Railway Active
- Railway Non-Active
- Provincial Highway
- County Road
- Local Road
- Major Rivers
- Niagara Escarpment Plan Boundary
- Oak Ridges Moraine Area
- Greenland
- Potential Greenland Linkages
- Settlement Areas
- Agricultural
- Rural
- Lands Not Subject to This Plan
- Municipal Border

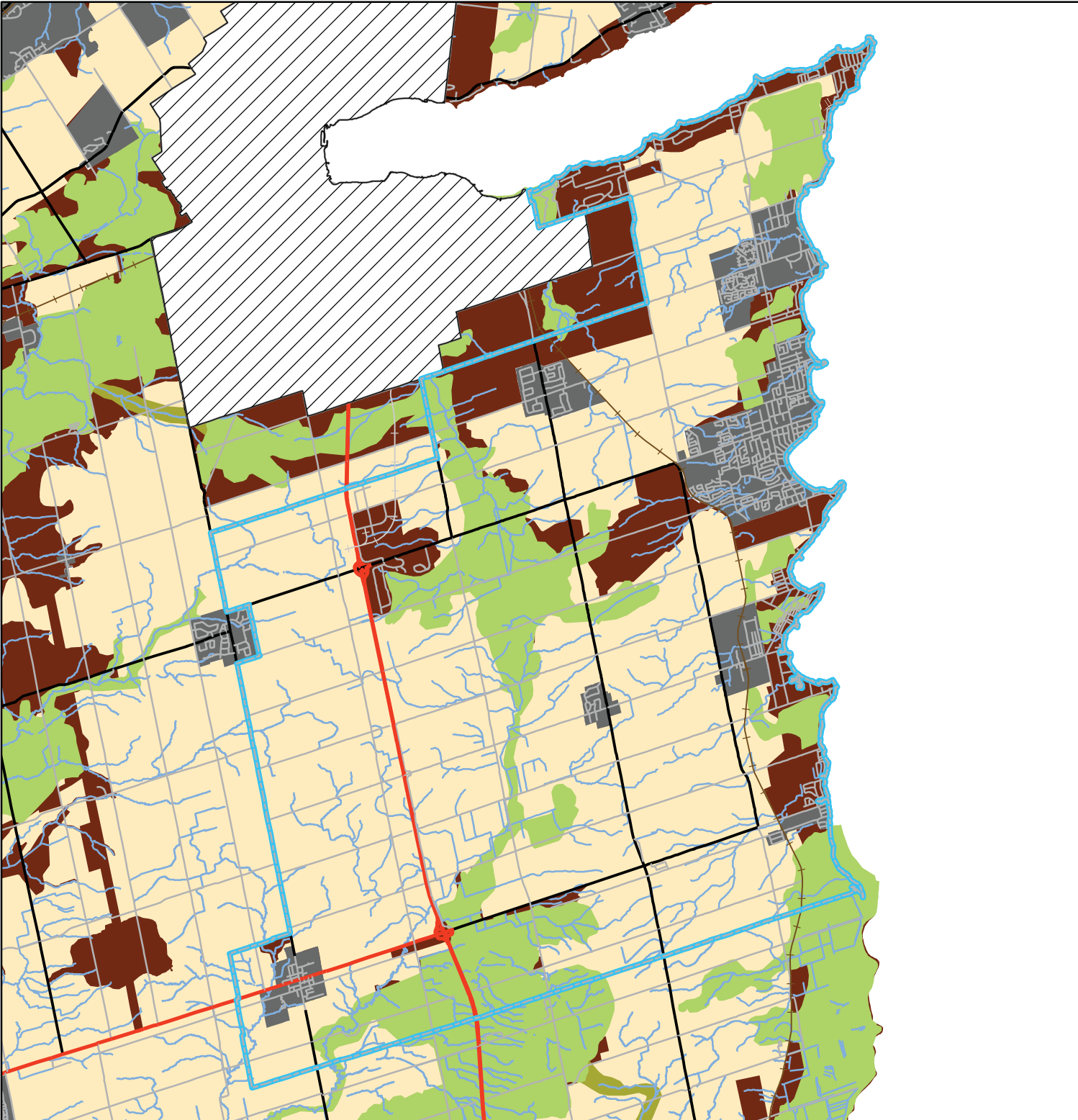
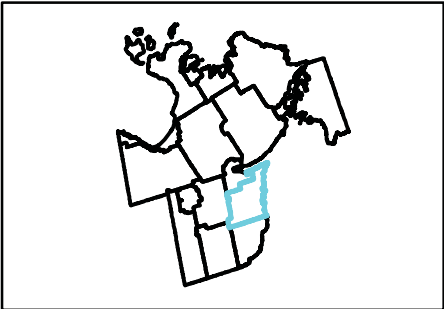
1:120,000

@.30575 1.5 Kilometers



This map, either in whole or in part, may not be reproduced without the written authority from the County of Simcoe. Copyright © County of Simcoe Land Information Network Cooperative - LINC 2010.  
 Produced in part under license from: the Cities of Barrie & Orillia, the Ontario Ministry of Natural Resources (Copyright - Queen's Printer 2010), ©Teranet Enterprises Inc. and its suppliers all rights reserved, and Members of the Ontario Geospatial Data Exchange.  
**THIS IS NOT A PLAN OF SURVEY.**  
 For information call (705) 726-9300 or visit [www.simcoe.ca](http://www.simcoe.ca)

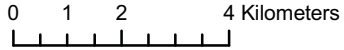
# LU-10 Innisfil Simcoe County Official Plan Land Use Designations 2008 (DRAFT)



### Legend

- Railway Active
- Railway Non-Active
- Provincial Highway
- County Road
- Local Road
- Major Rivers
- Niagara Escarpment Plan Boundary
- Oak Ridges Moraine Area
- Greenland
- Potential Greenland Linkages
- Settlement Areas
- Agricultural
- Rural
- Lands Not Subject to This Plan
- Municipal Border

1:140,000



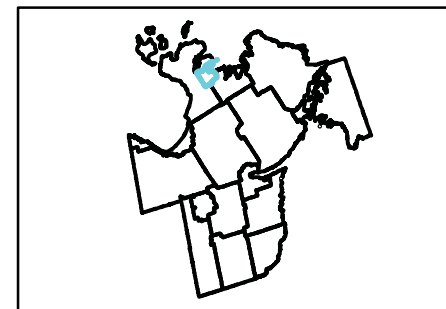
This map, either in whole or in part, may not be reproduced without the written authority from the County of Simcoe. Copyright © County of Simcoe Land Information Network Cooperative - LINC 2010

Produced in part under license from: the Cities of Barrie & Orillia, the Ontario Ministry of Natural Resources (Copyright - Queen Printer 2010), ©Teramet Enterprises Inc. and its suppliers all rights reserved, and Members of the Ontario Geospatial Data Exchange.














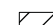

**THIS IS NOT A PLAN OF SURVEY.**

For information call (705) 726-9300 or visit [www.simcoe.ca](http://www.simcoe.ca)

# LU-11 Midland Simcoe County Official Plan Land Use Designations 2008 (DRAFT)



## Legend

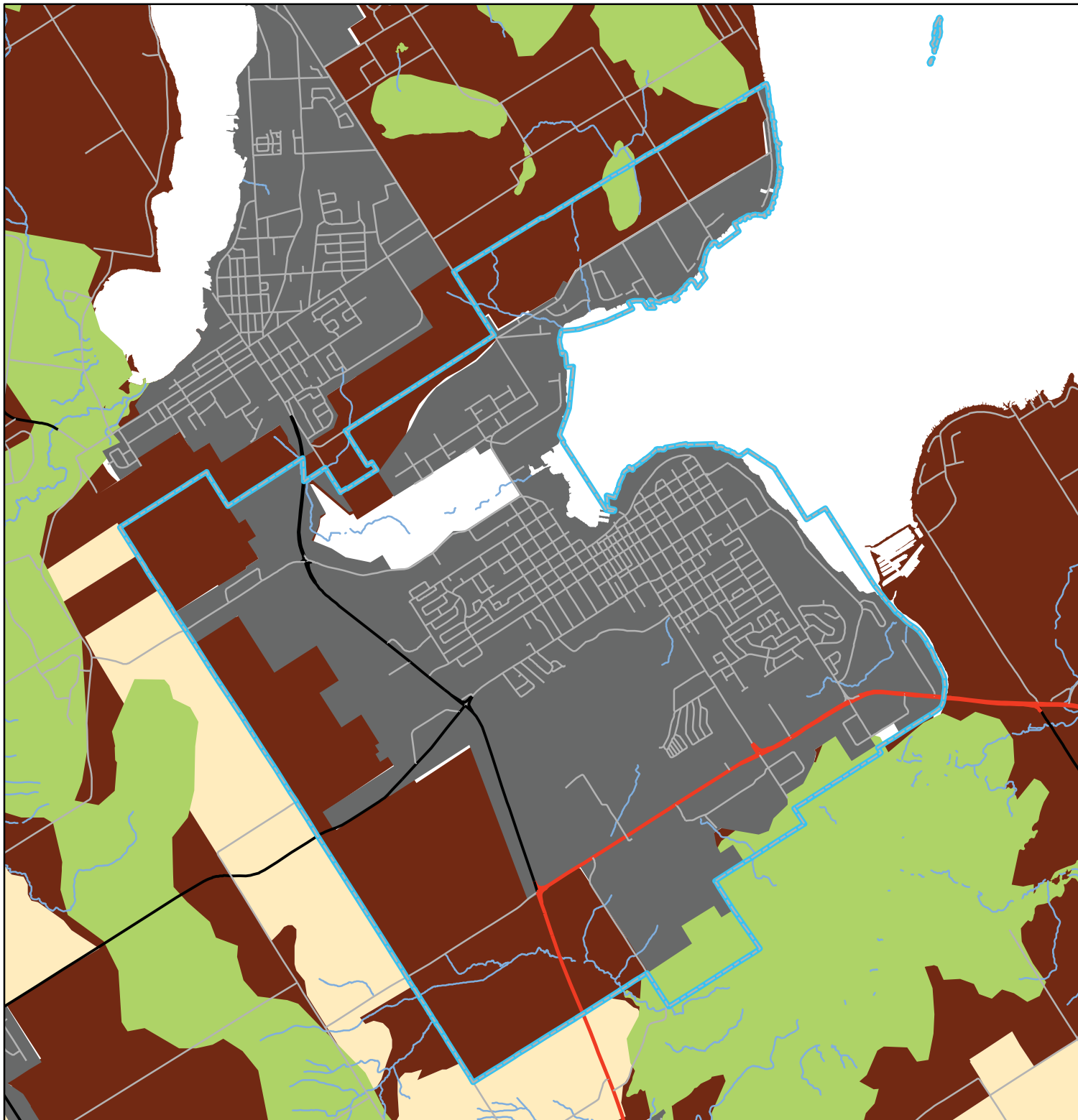
-  Railway Active
-  Railway Non-Active
-  Provincial Highway
-  County Road
-  Local Road
-  Major Rivers
-  Niagara Escarpment Plan Boundary
-  Oak Ridges Moraine Area
-  Greenland
-  Potential Greenland Linkages
-  Settlement Areas
-  Agricultural
-  Rural
-  Lands Not Subject to This Plan
-  Municipal Border

1:55,000

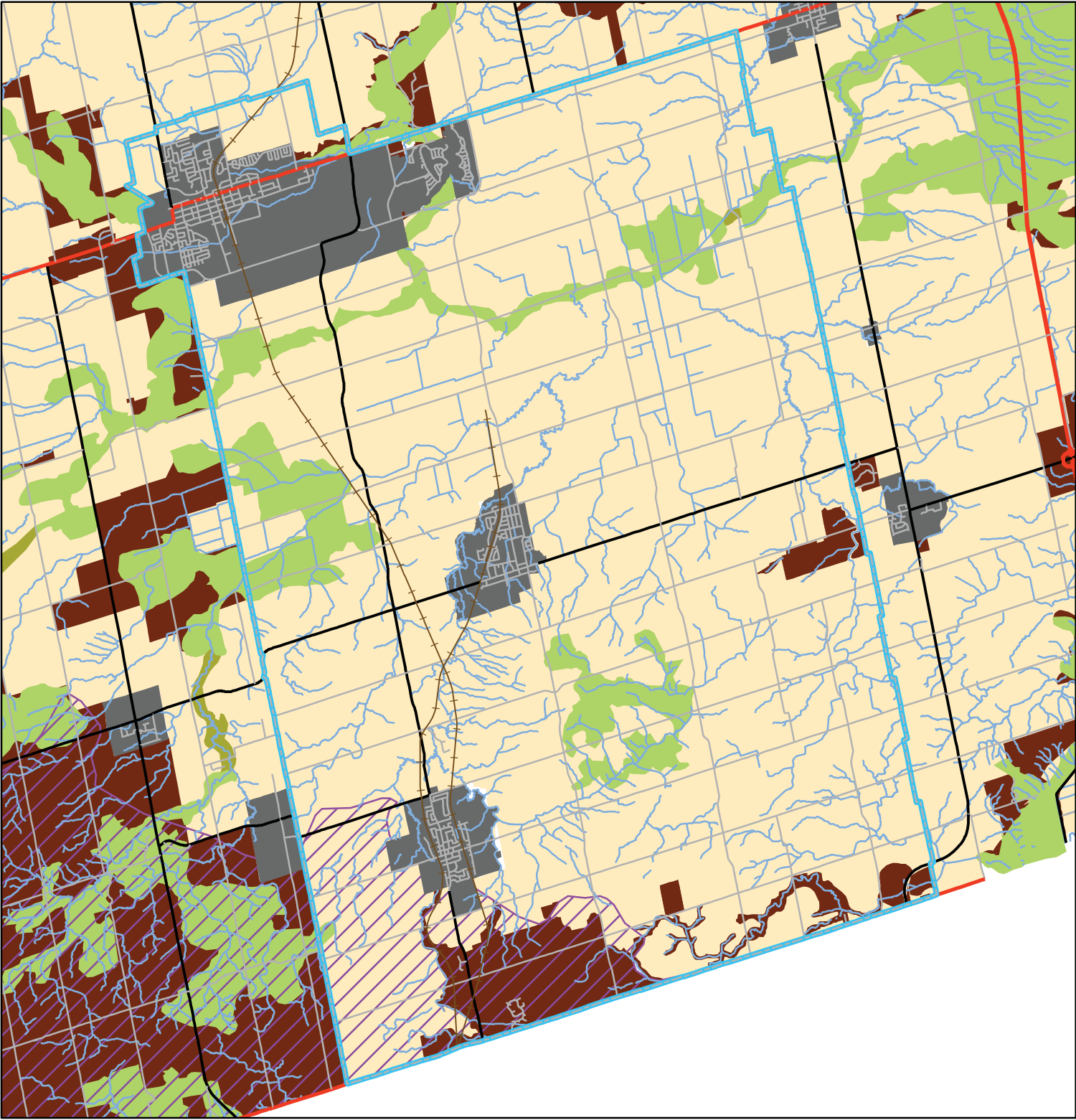
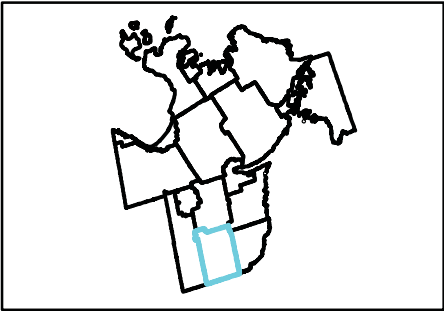
0 0.375 0.75 1.5 Kilometers




This map, either in whole or in part, may not be reproduced without the written authority from the County of Simcoe. Copyright © County of Simcoe Land Information Network Cooperative - LINC 2010  
Produced in part under license from: the Cities of Barrie & Orillia, the Ontario Ministry of Natural Resources (Copyright - Queen Printer 2010), ©Teranet Enterprises Inc. and its suppliers all rights reserved, and Members of the Ontario Geospatial Data Exchange.  
**THIS IS NOT A PLAN OF SURVEY.**  
For information call (705) 726-9300 or visit [www.simcoe.ca](http://www.simcoe.ca)



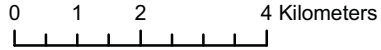
# LU-12 New Tecumseth Simcoe County Official Plan Land Use Designations 2008 (DRAFT)



### Legend

- Railway Active
- Railway Non-Active
- Provincial Highway
- County Road
- Local Road
- Major Rivers
- Niagara Escarpment Plan Boundary
- Oak Ridges Moraine Area
- Greenland
- Potential Greenland Linkages
- Settlement Areas
- Agricultural
- Rural
- Lands Not Subject to This Plan
- Municipal Border

1:120,000



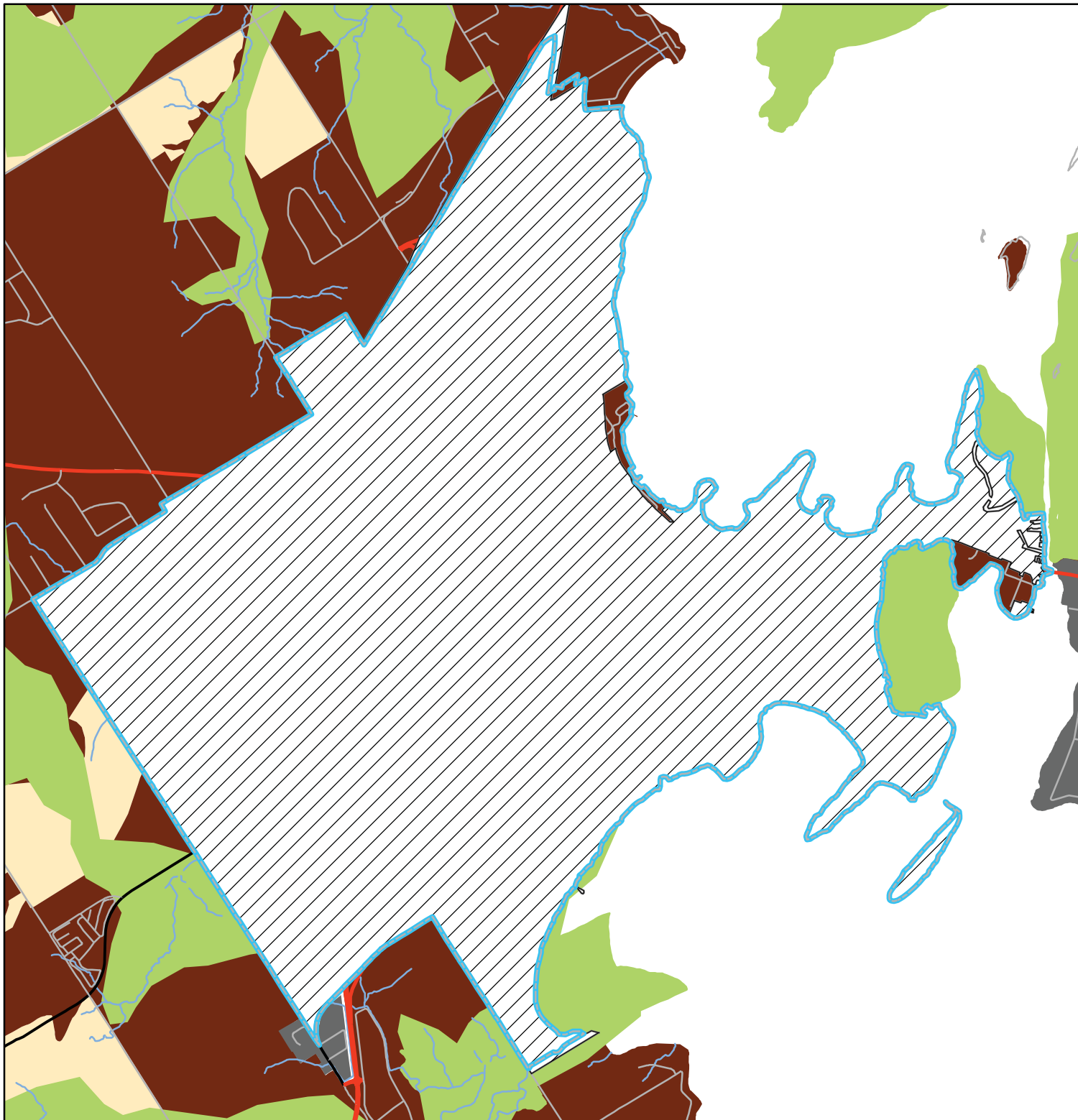
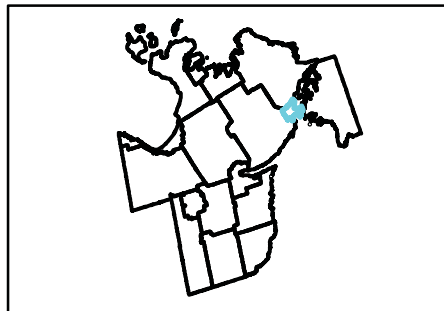
This map, either in whole or in part, may not be reproduced without the written authority from the County of Simcoe, Copyright © County of Simcoe Land Information Network Cooperative - LINC 2010

Produced in part under license from: the Cities of Barrie & Orillia, the Ontario Ministry of Natural Resources (Copyright - Queen Printer 2010), ©Teramet Enterprises Inc. and its suppliers all rights reserved, and Members of the Ontario Geospatial Data Exchange.

**THIS IS NOT A PLAN OF SURVEY.**

For information call (705) 726-9300 or visit [www.simcoe.ca](http://www.simcoe.ca)

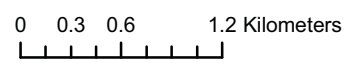
# LU-13 Orillia Simcoe County Official Plan Land Use Designations 2008 (DRAFT)




## Legend

- Railway Active
- Railway Non-Active
- Provincial Highway
- County Road
- Local Road
- Major Rivers
- Niagara Escarpment Plan Boundary
- Oak Ridges Moraine Area
- Greenland
- Potential Greenland Linkages
- Settlement Areas
- Agricultural
- Rural
- Lands Not Subject to This Plan
- Municipal Border

1:45,000





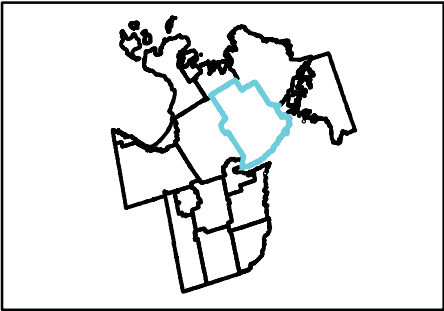
This map, either in whole or in part, may not be reproduced without the written authority from the County of Simcoe. Copyright © County of Simcoe Land Information Network Cooperative - LINC 2010

Produced in part under license from: the Cities of Barrie & Orillia, the Ontario Ministry of Natural Resources (Copyright - Queen Printer 2010), ©Teranet Enterprises Inc. and its suppliers all rights reserved, and Members of the Ontario Geospatial Data Exchange.

**THIS IS NOT A PLAN OF SURVEY.**

For information call (705) 726-9300 or visit [www.simcoe.ca](http://www.simcoe.ca)

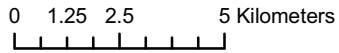
# LU-14 Oro-Medonte Simcoe County Official Plan Land Use Designations 2008 (DRAFT)



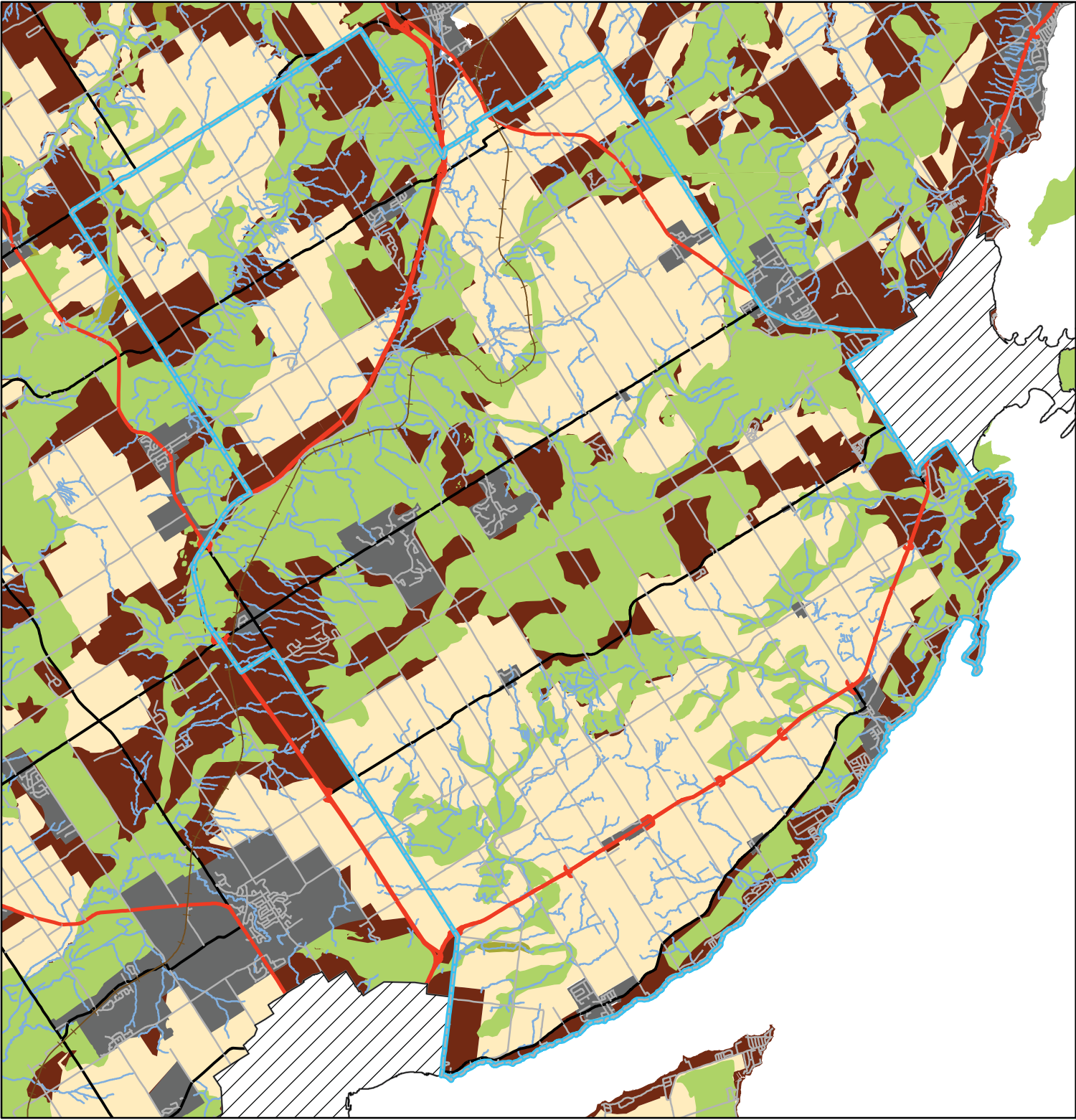
### Legend

- Railway Active
- Railway Non-Active
- Provincial Highway
- County Road
- Local Road
- Major Rivers
- Niagara Escarpment Plan Boundary
- Oak Ridges Moraine Area
- Greenland
- Potential Greenland Linkages
- Settlement Areas
- Agricultural
- Rural
- Lands Not Subject to This Plan
- Municipal Border

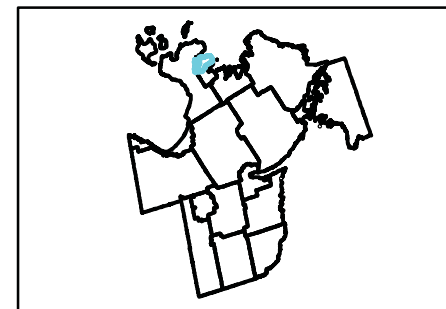
1:180,000


















This map, either in whole or in part, may not be reproduced without the written authority from the County of Simcoe. Copyright © County of Simcoe  
Land Information Network Cooperative - LINC 2010  
Produced in part under license from: the Cities of Barrie & Orillia, the Ontario Ministry of Natural Resources (Copyright - Queen Printer 2010), ©Teranet Enterprises Inc. and its suppliers all rights reserved, and Members of the Ontario Geospatial Data Exchange.  
**THIS IS NOT A PLAN OF SURVEY.**  
For information call (705) 726-9300 or visit [www.simcoe.ca](http://www.simcoe.ca)



# LU-15 Penetanguishene Simcoe County Official Plan Land Use Designations 2008 (DRAFT)




## Legend

-  Railway Active
-  Railway Non-Active
-  Provincial Highway
-  County Road
-  Local Road
-  Major Rivers
-  Niagara Escarpment Plan Boundary
-  Oak Ridges Moraine Area
-  Greenland
-  Potential Greenland Linkages
-  Settlement Areas
-  Agricultural
-  Rural
-  Lands Not Subject to This Plan
-  Municipal Border

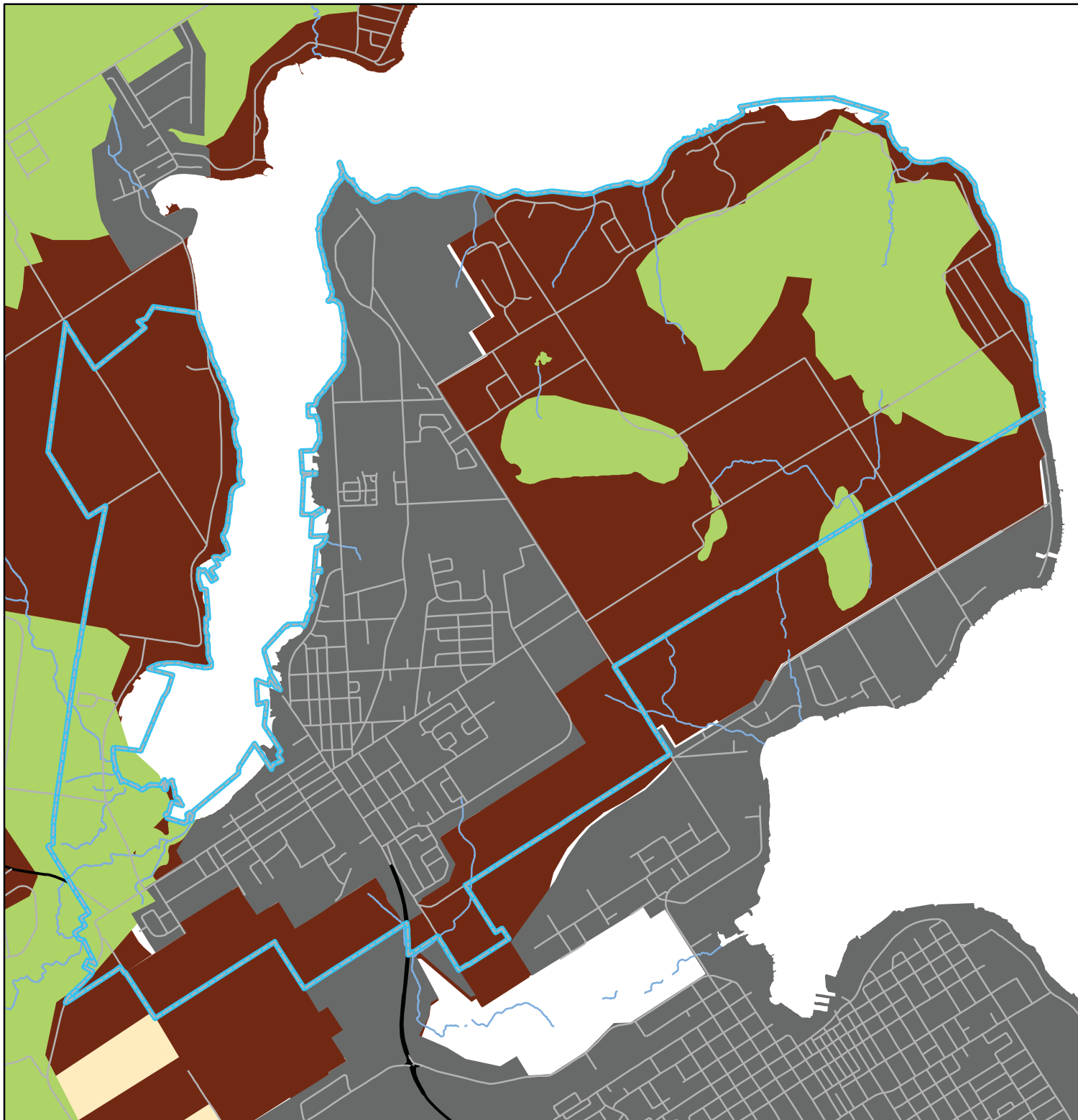
1:40,000

0 0.25 0.5 1 Kilometers



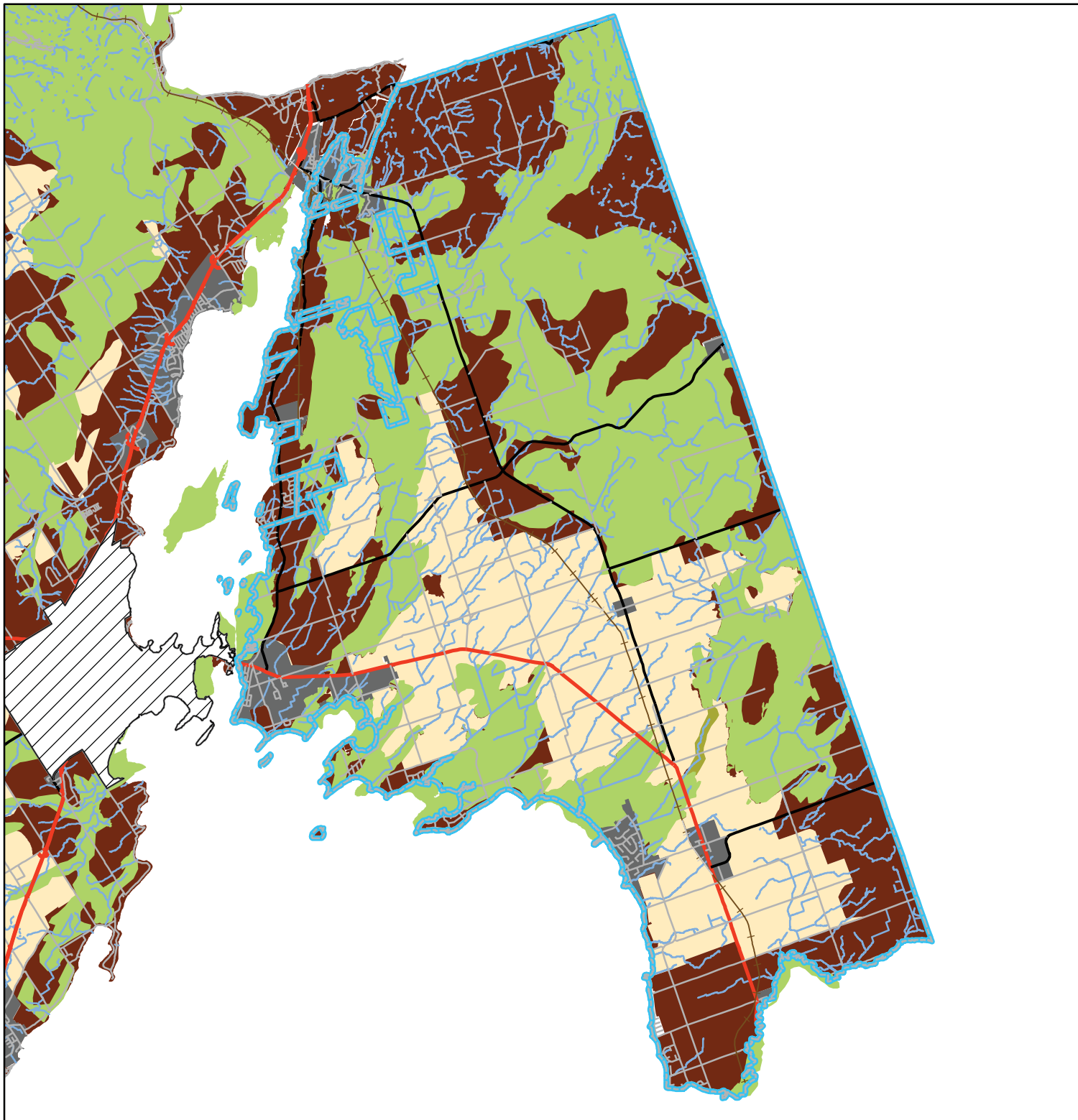
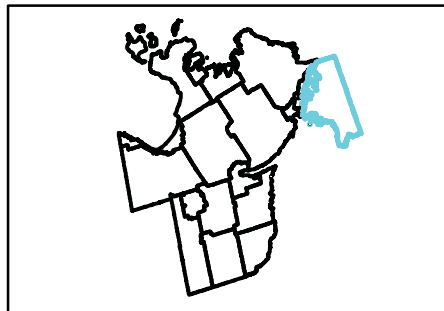



This map, either in whole or in part, may not be reproduced without the written authority from the County of Simcoe. Copyright © County of Simcoe Land Information Network Cooperative - LINC 2010.  
 Produced in part under license from: the Cities of Barrie & Orillia, the Ontario Ministry of Natural Resources (Copyright - Queen's Printer 2010), ©Teramet Enterprises Inc. and its suppliers all rights reserved, and Members of the Ontario Geospatial Data Exchange.  
**THIS IS NOT A PLAN OF SURVEY.**  
 For information call (705) 726-9300 or visit www.simcoe.ca





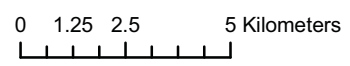
# LU-16 Ramara Simcoe County Official Plan Land Use Designations 2008 (DRAFT)




## Legend

- Railway Active
- Railway Non-Active
- Provincial Highway
- County Road
- Local Road
- Major Rivers
- Niagara Escarpment Plan Boundary
- Oak Ridges Moraine Area
- Greenland
- Potential Greenland Linkages
- Settlement Areas
- Agricultural
- Rural
- Lands not subject to this plan
- Municipal Border

1:180,000





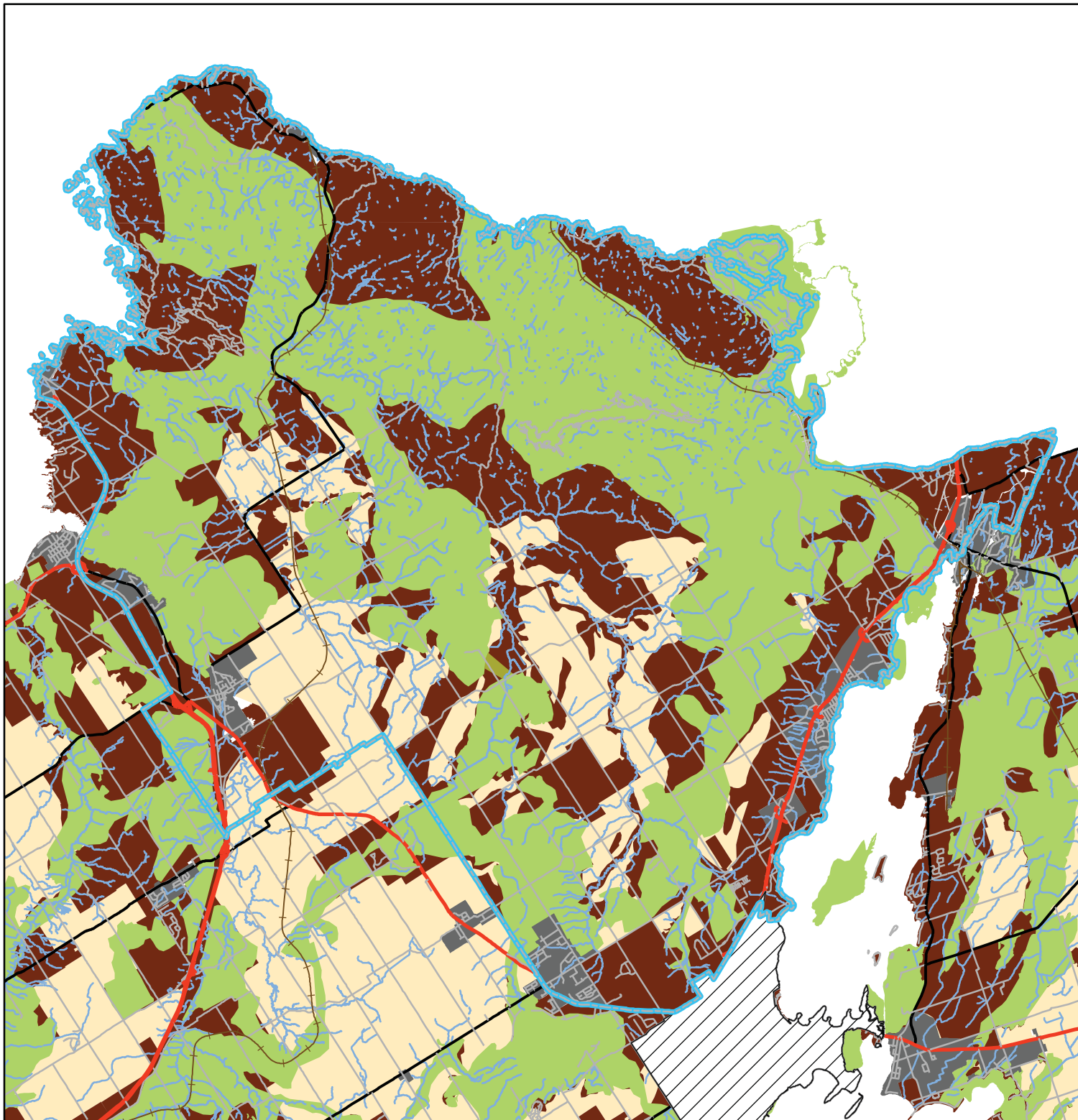
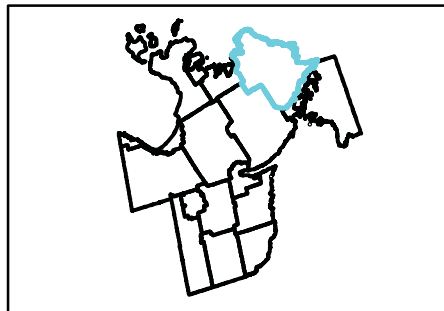
This map, either in whole or in part, may not be reproduced without the written authority from the County of Simcoe. Copyright © County of Simcoe Land Information Network Cooperative - LINC 2010

Produced in part under license from: the Cities of Barrie & Orillia, the Ontario Ministry of Natural Resources (Copyright - Queen Printer 2010), ©Teranet Enterprises Inc. and its suppliers all rights reserved, and Members of the Ontario Geospatial Data Exchange.

**THIS IS NOT A PLAN OF SURVEY.**

For information call (705) 726-9300 or visit [www.simcoe.ca](http://www.simcoe.ca)

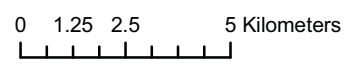
# LU-17 Severn Simcoe County Official Plan Land Use Designations 2008 (DRAFT)



## Legend

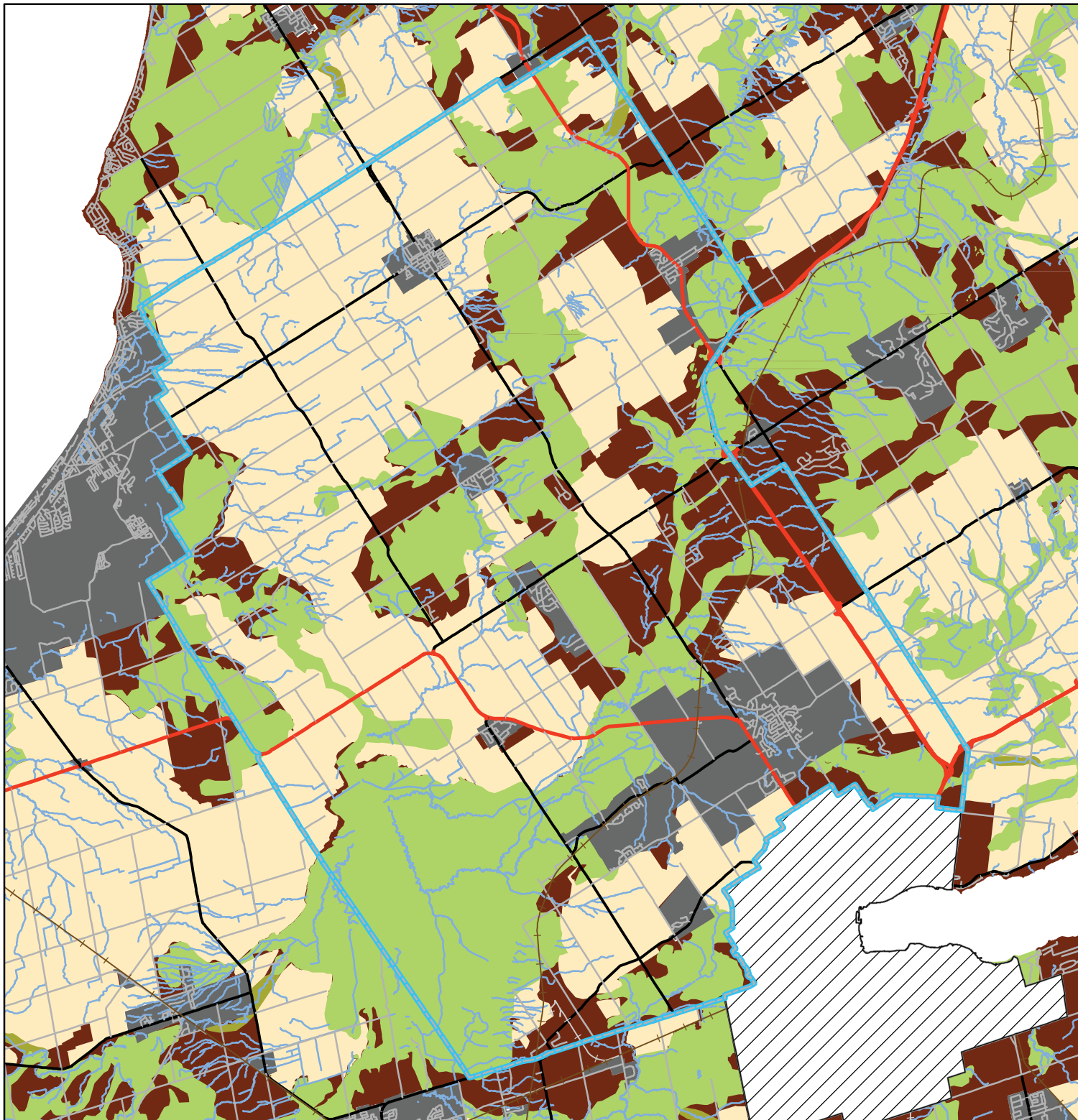
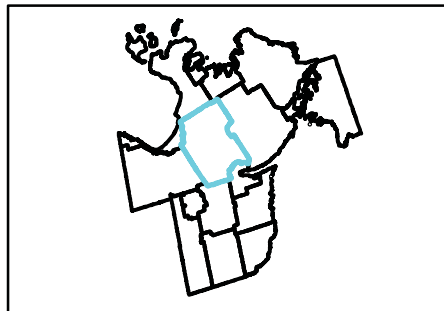
- Railway Active
- Railway Non-Active
- Provincial Highway
- County Road
- Local Road
- Major Rivers
- Niagara Escarpment Plan Boundary
- Oak Ridges Moraine Area
- Greenland
- Potential Greenland Linkages
- Settlement Areas
- Agricultural
- Rural
- Lands not subject to this plan
- Municipal Border

1:180,000



**SIMCOE COUNTY SALARY LAYERS INFORMATION NETWORK COOPERATIVE**  
**LINC**  
 This map, either in whole or in part, may not be reproduced without the written authority from the County of Simcoe, Copyright © County of Simcoe Land Information Network Cooperative - LINC 2010  
 Produced in part under license from: the Cities of Barrie & Orillia, the Ontario Ministry of Natural Resources (Copyright - Queen Printer 2010), ©Teramet Enterprises Inc. and its suppliers all rights reserved, and Members of the Ontario Geospatial Data Exchange.  
 THIS IS NOT A PLAN OF SURVEY.  
 For information call (705) 726-9300 or visit www.simcoe.ca

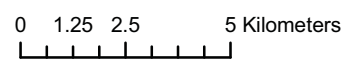
# LU-18 Springwater Simcoe County Official Plan Land Use Designations 2008 (DRAFT)



## Legend

- Railway Active
- Railway Non-Active
- Provincial Highway
- County Road
- Local Road
- Major Rivers
- Niagara Escarpment Plan Boundary
- Oak Ridges Moraine Area
- Greenland
- Potential Greenland Linkages
- Settlement Areas
- Agricultural
- Rural
- Lands not subject to this plan
- Municipal Border

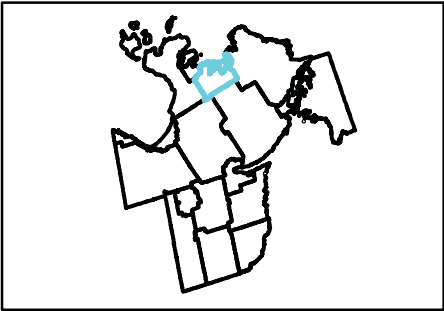
1:180,000















**LINC**  
LAND INFORMATION NETWORK COOPERATIVE

This map, either in whole or in part, may not be reproduced without the written authority from the County of Simcoe. Copyright © County of Simcoe Land Information Network Cooperative - LINC 2010  
Produced in part under license from: the Cities of Barrie & Orillia, the Ontario Ministry of Natural Resources (Copyright - Queen Printer 2010), ©Teranet Enterprises Inc. and its suppliers all rights reserved, and Members of the Ontario Geospatial Data Exchange.  
**THIS IS NOT A PLAN OF SURVEY.**  
For information call (705) 726-9300 or visit [www.simcoe.ca](http://www.simcoe.ca)

**LU-19  
Tay  
Simcoe County Official Plan  
Land Use Designations  
2008 (DRAFT)**

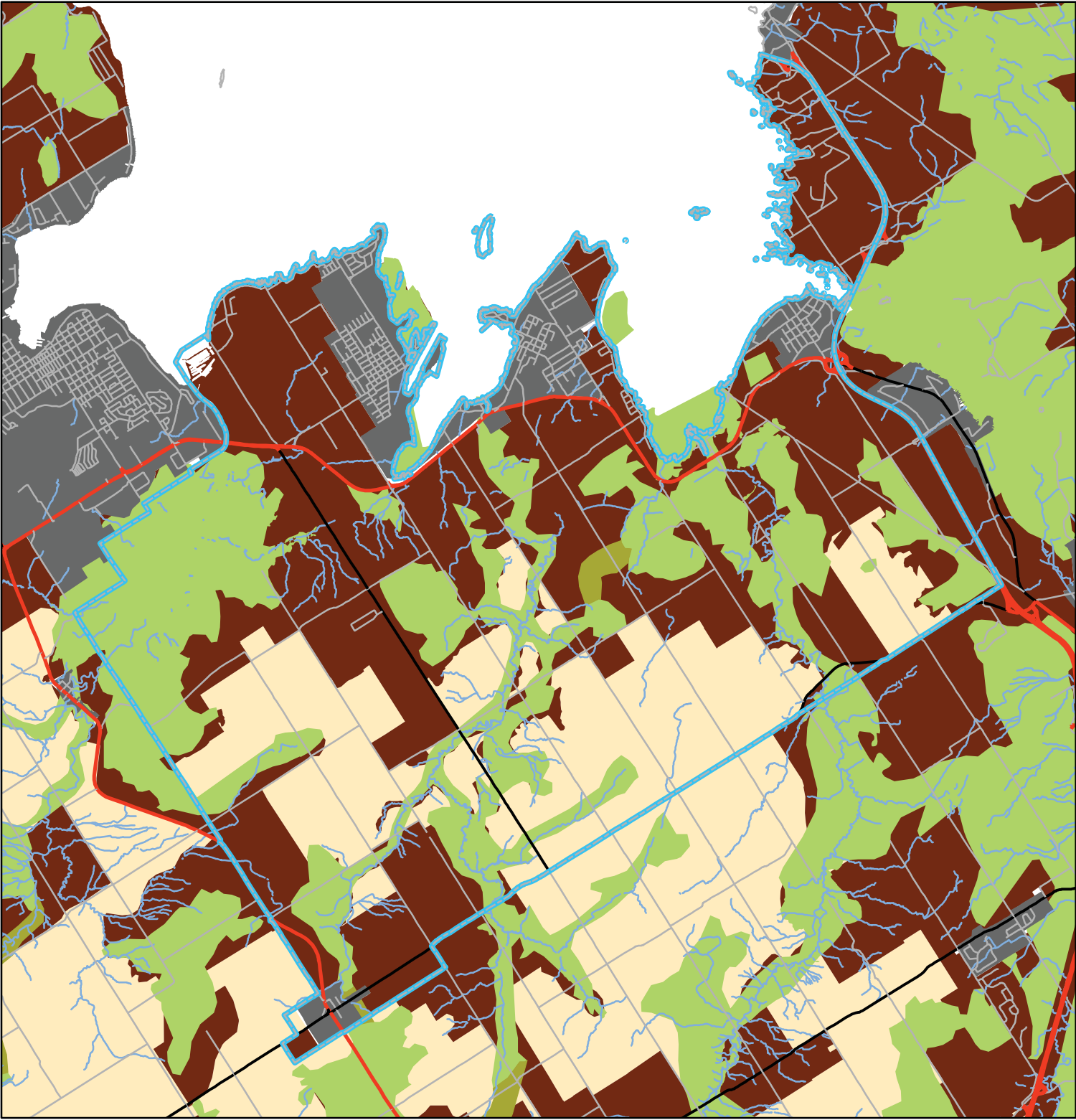


**Legend**

-  **Railway Active**
-  **Railway Non-Active**
-  **Provincial Highway**
-  **County Road**
-  **Local Road**
-  **Major Rivers**
-  **Niagara Escarpment Plan Boundary**
-  **Oak Ridges Moraine Area**
-  **Greenland**
-  **Potential Greenland Linkages**
-  **Settlement Areas**
-  **Agricultural**
-  **Rural**
-  **Lands not subject to this plan**
-  **Municipal Border**

1:100,000

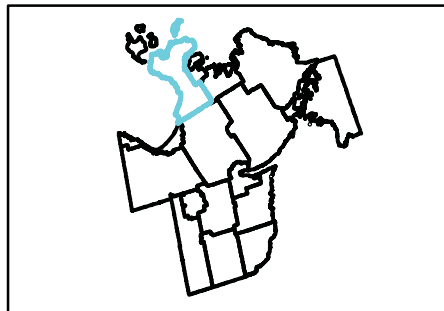
00.35.7 1.4 Kilometers



**LINC**  
LAND INFORMATION NETWORK COOPERATIVE

This map, either in whole or in part, may not be reproduced without the written authority from the County of Simcoe. Copyright © County of Simcoe Land Information Network Cooperative - LINC 2010  
Produced in part under license from: the Cities of Barrie & Orillia, the Ontario Ministry of Natural Resources (Copyright - Queen's Printer 2010), ©Teramet Enterprises Inc. and its suppliers all rights reserved, and Members of the Ontario Geospatial Data Exchange.  
**THIS IS NOT A PLAN OF SURVEY.**  
For information call (705) 726-9300 or visit [www.simcoe.ca](http://www.simcoe.ca)

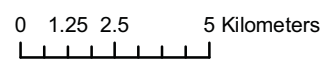
# LU-20 Tiny Simcoe County Official Plan Land Use Designations 2008 (DRAFT)



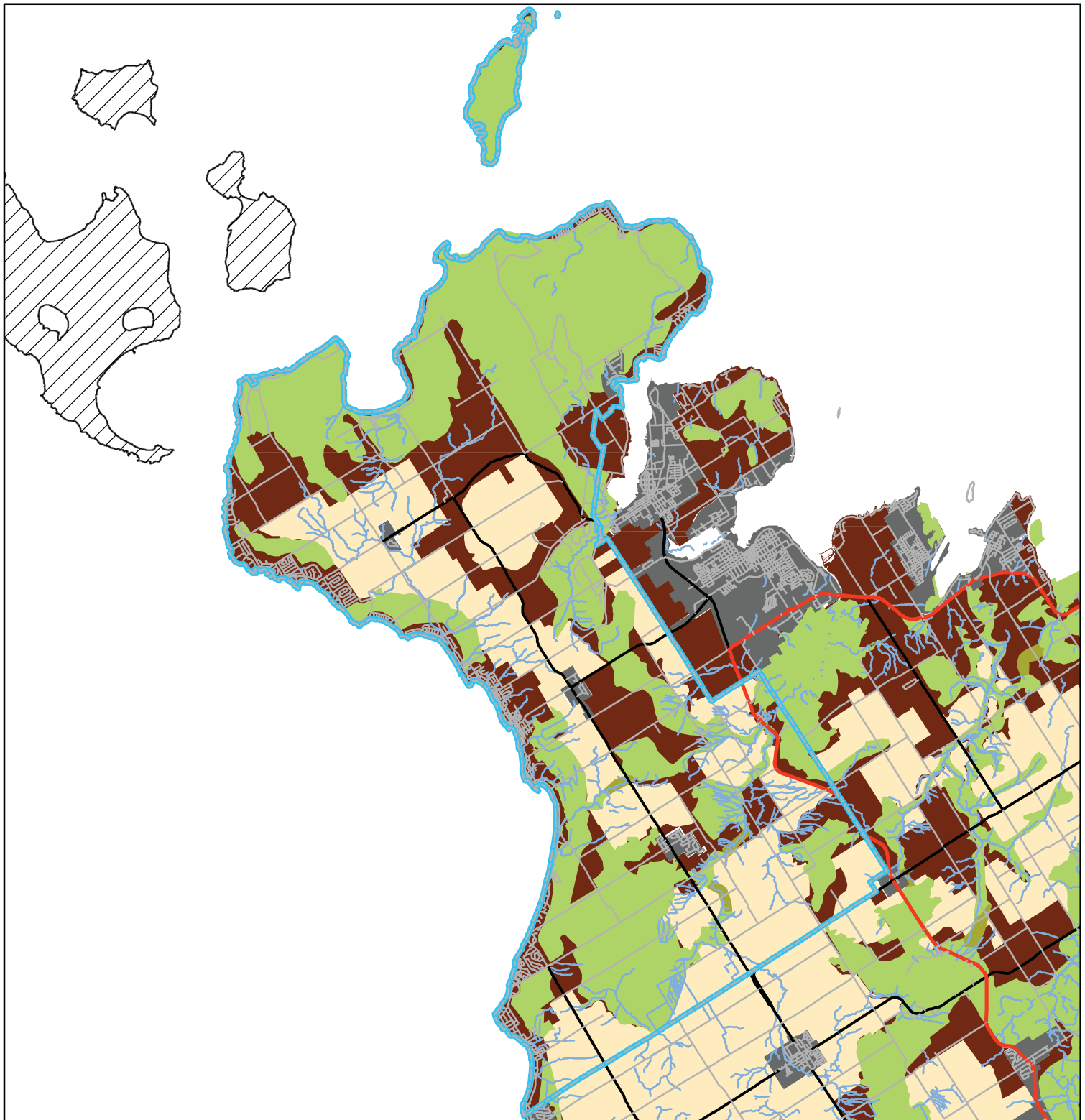
## Legend

- Railway Active
- Railway Non-Active
- Provincial Highway
- County Road
- Local Road
- Major Rivers
- Niagara Escarpment Plan Boundary
- Oak Ridges Moraine Area
- Greenland
- Potential Greenland Linkages
- Settlement Areas
- Agricultural
- Rural
- Lands not subject to this plan
- Municipal Border

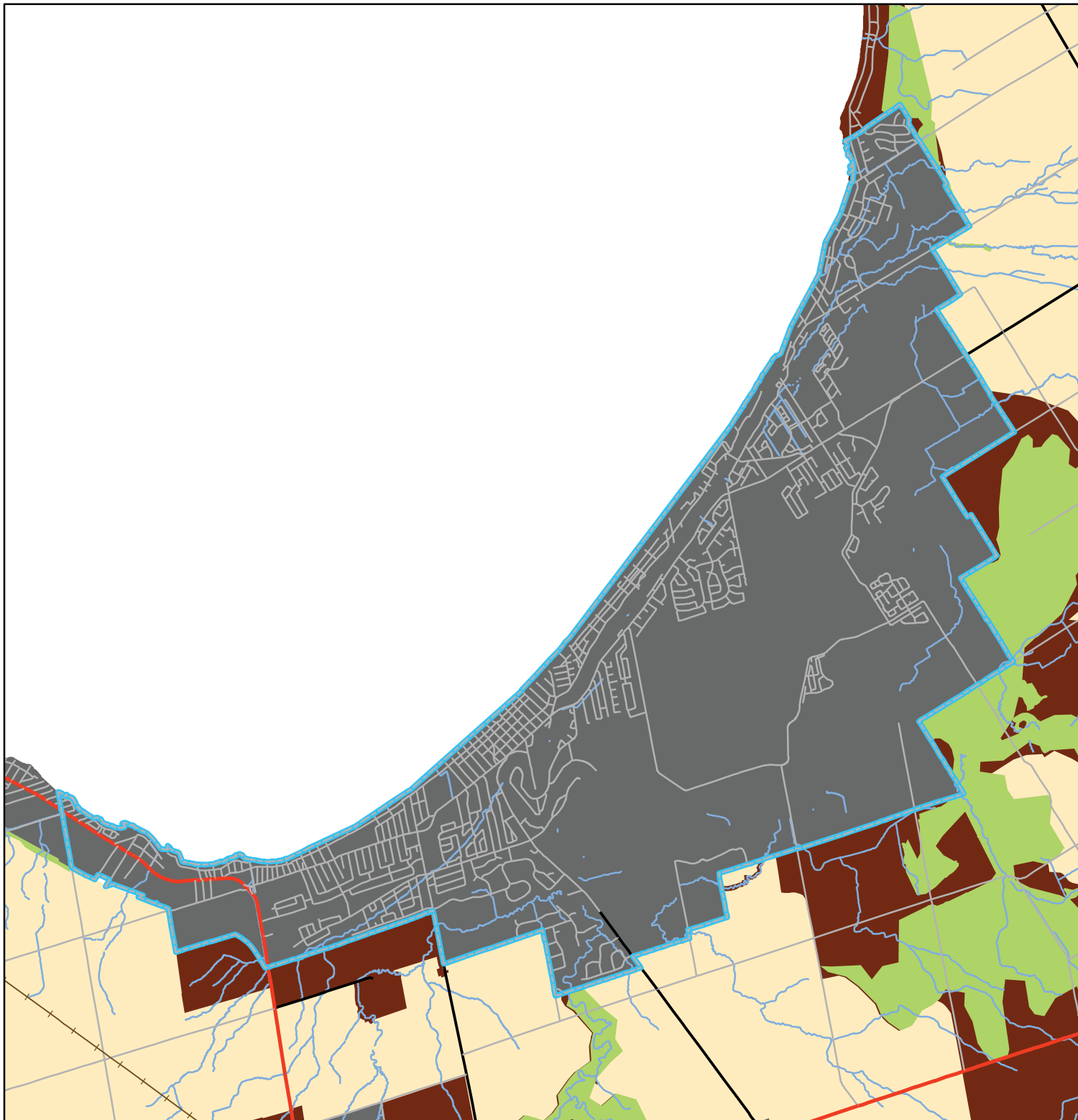
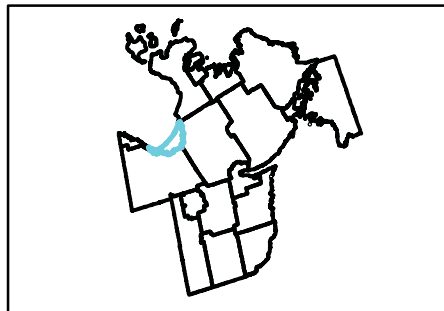
1:200,000



**LINC** SIMCOE COUNTY SALARY COOPERATIVE  
 Land Information Network Cooperative - LINC 2010  
 Produced in part under license from: the Cities of Barrie & Orillia, the Ontario Ministry of Natural Resources (Copyright - Queen Printer 2010), ©Teramet Enterprises Inc. and its suppliers all rights reserved, and Members of the Ontario Geospatial Data Exchange.  
 THIS IS NOT A PLAN OF SURVEY.  
 For information call (705) 726-9300 or visit www.simcoe.ca



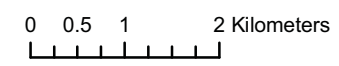
# LU-21 Wasaga Beach Simcoe County Official Plan Land Use Designations 2008 (DRAFT)




## Legend

- Railway Active
- Railway Non-Active
- Provincial Highway
- County Road
- Local Road
- Major Rivers
- Niagara Escarpment Plan Boundary
- Oak Ridges Moraine Area
- Greenland
- Potential Greenland Linkages
- Settlement Areas
- Agricultural
- Rural
- Lands not subject to this plan
- Municipal Border

1:80,000





This map, either in whole or in part, may not be reproduced without the written authority from the County of Simcoe. Copyright © County of Simcoe Land Information Network Cooperative - LINC 2010

Produced in part under license from: the Cities of Barrie & Orillia, the Ontario Ministry of Natural Resources (Copyright - Queen Printer 2010), ©Teramet Enterprises Inc. and its suppliers all rights reserved, and Members of the Ontario Geospatial Data Exchange.

**THIS IS NOT A PLAN OF SURVEY.**

For information call (705) 726-9300 or visit [www.simcoe.ca](http://www.simcoe.ca)