



Waste Management Policies & Schedules County Official Plan Amendment

Simcoe County Statutory Public Meeting (Virtual)
November 24, 2020



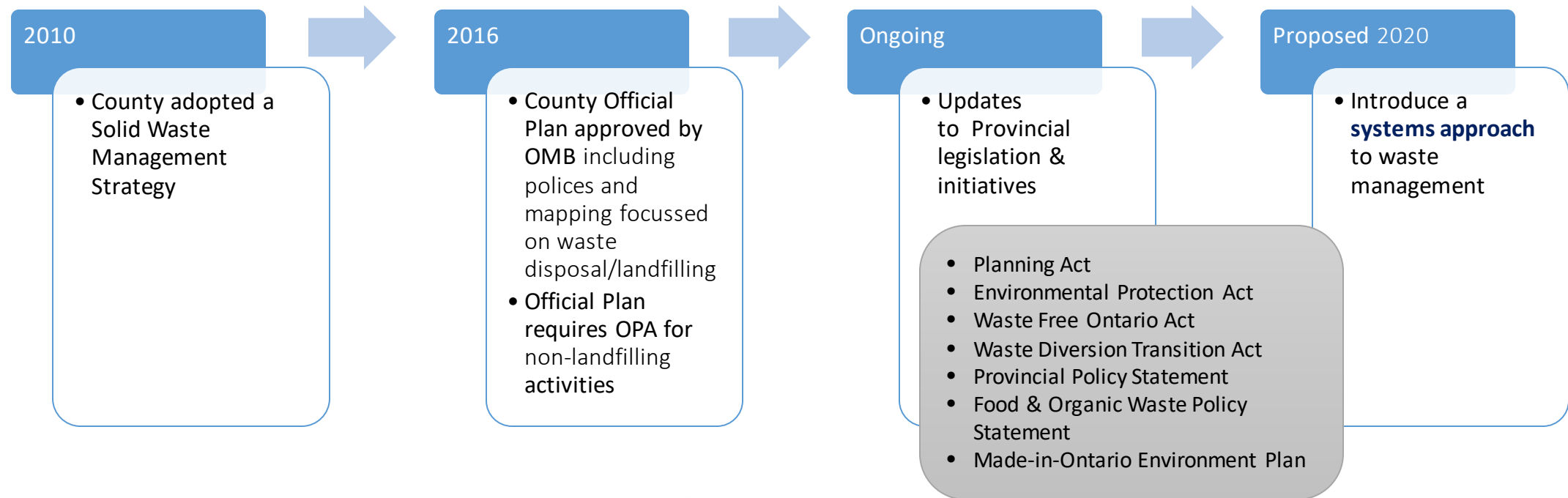
Presentation Outline

- Overview of County waste management responsibilities
- Proposed County Official Plan Amendment
 - Draft Amended Policies (Section 4.9)
 - Draft Amended Map Schedules (5.6.1 and 5.6.2)
- OPA consultation overview
- Next Steps



County Waste Management Responsibilities

- Waste management is a complex system encompassing many areas, including: environmental protection; government regulation; waste reduction and diversion; waste disposal; management of materials; curbside collection of waste, recycling and organics; and public education



Overview of Proposed Amendments by Topic

- Draft amendments are grouped into the following sections:
 - Establishment of a systems approach to waste management;
 - Defining *Landfilling vs Non-landfilling* activities;
 - New Waste Management Sites or Expansion of an Existing Site;
 - Policies related to Mapping of Waste Management Sites;
 - D-4 Assessment Areas and D-4 Studies;
 - Land Use Compatibility Studies; and,
 - Updated map Schedules.

What is a Waste Management System?

- New Section 4.9.4 introduces the concept of a waste management system which is a **collection of waste management sites** including sites and facilities to accommodate solid waste from one or more municipality, and includes one or more of the following uses:
 - *Landfilling* activities (e.g. the disposal of waste on the ground);
 - *Fill Area* and the *Buffer Area* of a property used for landfilling;
 - *Non-landfilling* activities (e.g. waste transfer or processing);
 - Any land upon, into or through which, or building or structure in which, *waste* is deposited, disposed of, handled, stored, transferred, treated or processed; and
 - Any operation carried out or machinery used in connection with the above.

New Definitions - *Landfilling vs Non-landfilling*

- **Landfilling** means the disposal of waste by deposit, under controlled conditions, on land or on land covered by water, and includes the compaction of the waste into a cell and covering the waste with cover materials at regular intervals. (R.R.O. 1990, Reg. 347: General – Waste Management)



- **Non-landfilling** means any permitted use or activity in a waste management site other than landfilling and includes but is not limited to, recycling facilities, transfer stations, and processing sites.

New Waste Management Site or Expansion of an Existing Site

- New Section 4.9.10, Notwithstanding sections 3.3.6 and 3.8.19 of this Plan, any new waste management sites or expansions of an existing waste management site for the purposes of landfilling will require an amendment to this Plan and to the local municipal official plan.
- A new waste management site or the expansion of an existing waste management site for the purposes of non-landfilling activities including, but not limited to, the transfer of materials, management of recyclable materials, or processing of organics, will not require an amendment to this Plan.
- An amendment to the local municipal official plan may be required for a new waste management site or expansion of an existing waste management site for the purposes of non-landfilling activities.
- New or expanded non-landfilling waste management sites will be identified on appropriate mapping schedules without an amendment to this Plan.

Mapping of Waste Management Sites

- New Section 4.9.11 The locations of County owned and operated waste disposal management sites are shown on Schedule 5.6.1. The boundaries of County owned and operated waste management sites are the property boundary of the lands owned by the County on which waste management site activities occur.
- The locations of private, local municipality, and provincially owned or operated waste disposal management sites are shown on Schedule 5.6.2. Information regarding the sites identified on Schedule 5.6.2, is to be obtained from the Ministry of Environment, Conservation and Parks.
- The locations of all waste management sites shown on Schedules 5.6.1 and 5.6.2 within each local municipality will be mapped in the respective local municipal official plans.
- Where the Ministry of Environment, Conservation and Parks identifies that a waste management site may be removed or must be added to the schedules of this Plan, amendments to this Plan and to the local municipal plan are not required.
- Where policy requires that an amendment to this Plan is required to remove or add a waste management site, a mapping change will occur as part of that amendment. Any such amendment requires approval from the Ministry of Municipal Affairs and Housing.



D-4 Assessment Area Policies Clarified

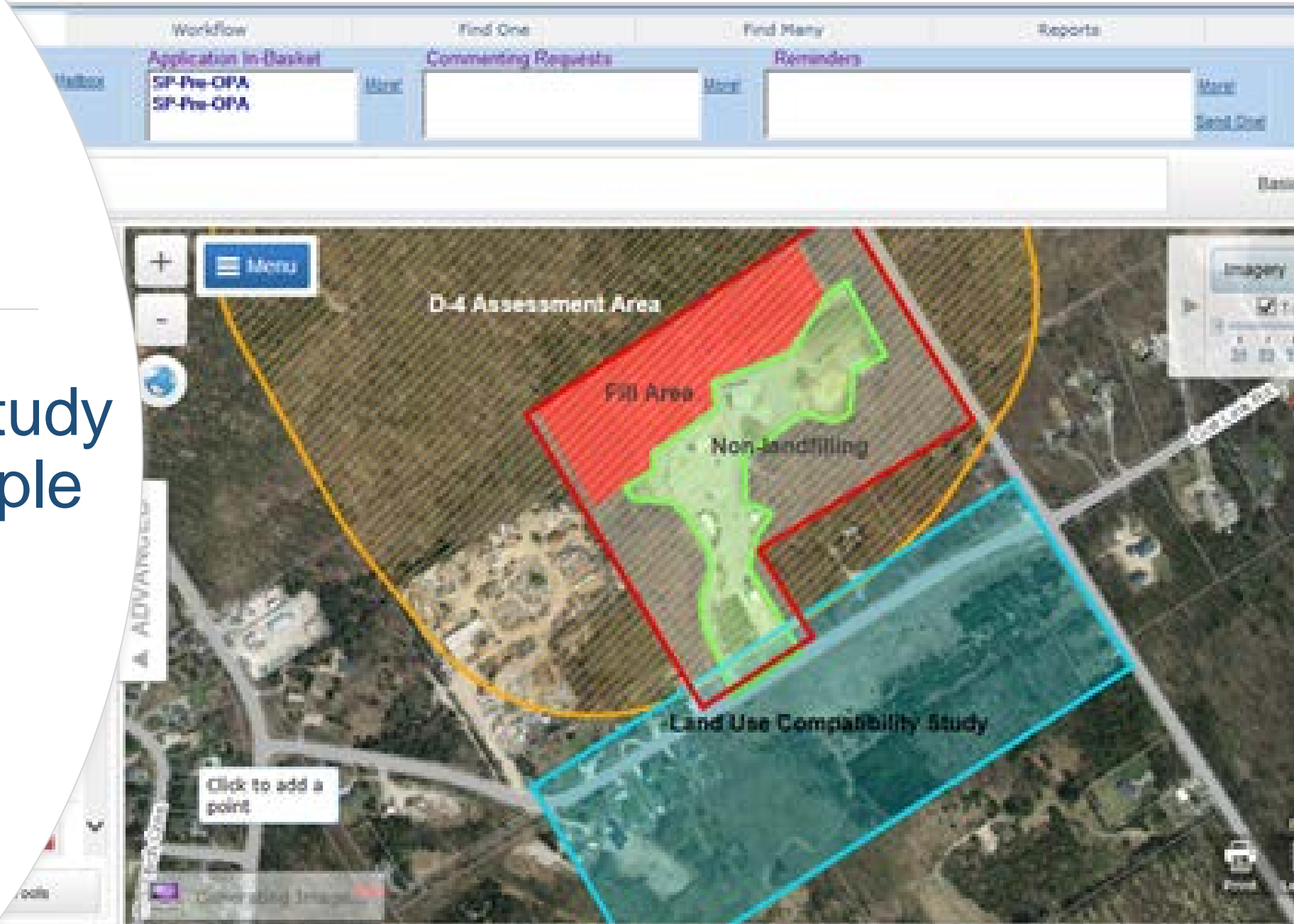
- Province's Guideline D-4 refers to Land Use On or Near Landfills and Dumps. This Guideline provides that an area within 500 metres of a *Fill Area* on a waste management site is the area in which landfilling-related impacts may be present.
 - This is known as the D-4 Assessment Area
- Sensitive land uses such as residential uses shall normally not be permitted in the D-4 Assessment Area however, this shall be considered on a site-by-site basis in accordance with the results of a D-4 Study
- Where appropriate, the County may scope the D-4 Study in accordance with the requirements of the Provincial Guideline D-4

Land Use Compatibility Study

- A new Section 4.9.19 is proposed to introduce the potential requirement for a Land Use Compatibility Study.
- This Study may be required when development is proposed in the vicinity of a waste management site which does not contain *landfilling* activities; or where there is a waste management site with *non-landfilling* activities occurring outside of the *fill area*.
- The Land Use Compatibility Study shall determine potential land use conflicts with proposed development and planned or ongoing waste management site activities, on lands that may not be subject to a D-4 Assessment Area or the requirement for a D-4 Study.



Land Use Compatibility Study Scenario Example

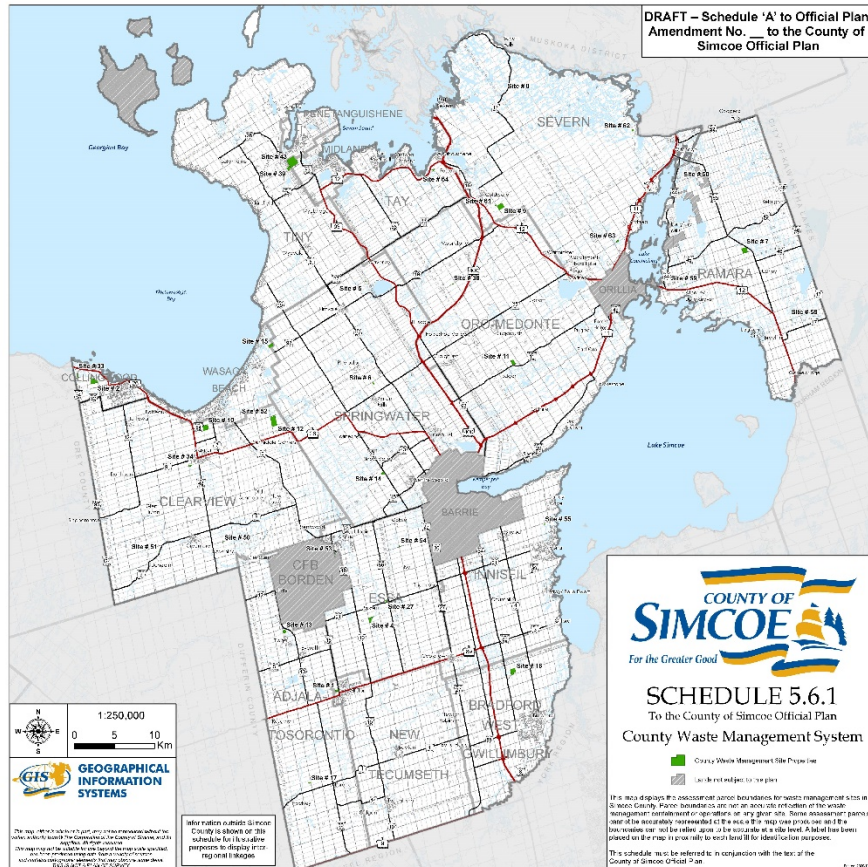


Schedules 5.6.1 & 5.6.2 Overview

- No new waste management sites are proposed as part of this Amendment
- Title and Legend updates to existing map Schedules are proposed:
 - The titles have been amended to remove "Waste Disposal Sites" which is replaced with "Waste Management System" on Schedule 5.6.1 and "Waste Management Sites" on Schedule 5.6.2 to reflect the systems approach to waste management.
 - County waste management sites are now mapped as the entire County-owned property boundary where both *landfilling* and *non-landfilling* activities may occur.
 - Details regarding the status of a waste management site (Open, Closed or Under Development), operations or activities occurring on each site, and the mapping of Fill Areas and D-4 Assessment Areas will be identified on mapping and tables separate to the Official Plan, to be produced by the County and made available to the member municipalities, the development community and the public.
- The following note has been added to both maps:
 - This map displays the assessment parcel boundaries for waste management sites in Simcoe County. Parcel boundaries are not an accurate reflection of the waste management containment or operations on any given site. Some assessment parcels cannot be accurately represented at the scale this map was produced and the boundaries cannot be relied upon to be accurate at a site level. A label has been placed on the map in proximity to each landfill for identification purposes.

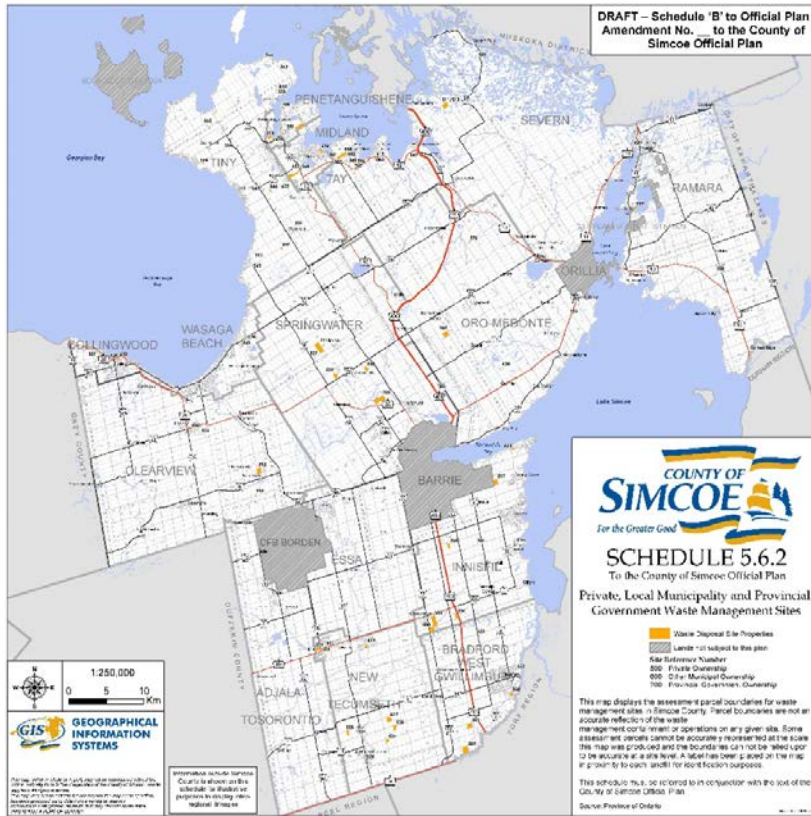


Schedule 5.6.1 County Waste Management System



- Schedule Title changed to "County Waste Management System"
- Waste management sites now mapped as the boundaries of the lands owned by County on which a variety of waste management site activities may occur
- Some previously mapped sites have been removed as they have been closed, remediated and their Ministry approvals revoked.

Schedule 5.6.2 Private, Local Municipality and Provincial Government Waste Management Sites



- Schedule Title has been updated to clarify the ownership of these sites.
- Some previously mapped sites have been removed based on approval by the Province (Ministry of Environment, Conservation and Parks)
- The sites map layer has been provided to the County by the Province.

Consultation

September 2019

- Pre-consultation meeting with Ministry of Municipal Affairs & Housing

December 2019

- Circulated Draft OPA & Schedules to external agencies, area municipalities, Indigenous communities and internal departments

March 2020

- Verbal feedback received from MMAH under one-window approach

2020 Ongoing

- Receipt of comments from external agencies, area municipalities and Indigenous communities

October 2020

- Updates made to policies and schedules based on feedback received
- Updated materials recirculated for comment in advance of public meeting



Summary

- With the introduction of a systems approach to waste management, the amendment provides support for a broader range of activities at waste management sites and recognizes that such activities may include landfilling and/or non-landfilling activities.
- A new waste management site or the expansion of an existing waste management site for the purposes of non-landfilling activities will not require an amendment to the County Official Plan but may require an amendment to the local Official Plan.
- D-4 and Land Use Compatibility Studies will determine potential land use conflicts with proposed development and planned or ongoing waste management site activities.
- The new policies are now consistent with applicable provincial legislation, provincial plans and policy statements.
- Supports diversion opportunities at County waste facilities in accordance with the updated Solid Waste Management Strategy.



Next Steps

- Review and address any comments received at the Public Meeting;
- Report back and present the finalized official plan amendment (OPA) to Committee of the Whole and Council for adoption in the first quarter of 2021; and
- When adopted, submit OPA Submission Package to MMAH for review and approval.



Thank You

Greg Marek, MCIP RPP

Manager of Planning

greg.marek@simcoe.ca

705-726-9300 x1362

Adrianna Spinosa, MCIP RPP

Planner III

adrianna.spinosa@simcoe.ca

705-726-9300 x1912

More Info:

<https://www.simcoe.ca/Planning/Pages/wasteCOPA.aspx>

