

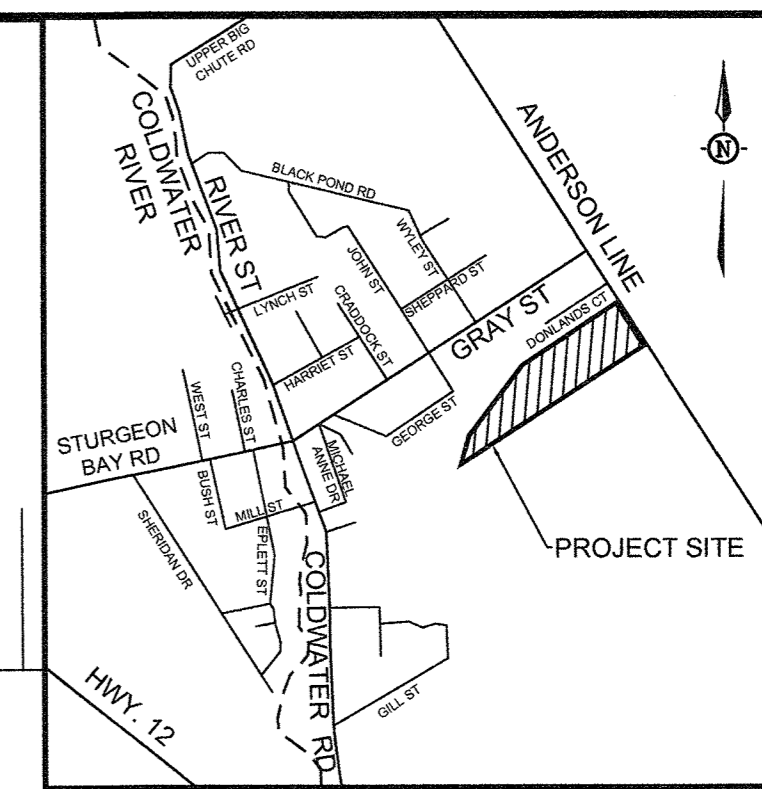
REVISIONS

#	DATE	BY	DESCRIPTION
A	05/06/20	PB	ISSUED FOR DRAFT PLAN

THESE DRAWINGS ARE NOT TO BE SCALED AND IN THE CASE OF A DISCREPANCY PLEASE CONTACT GRANITE ENGINEERING SERVICES PRIOR TO CONSTRUCTION

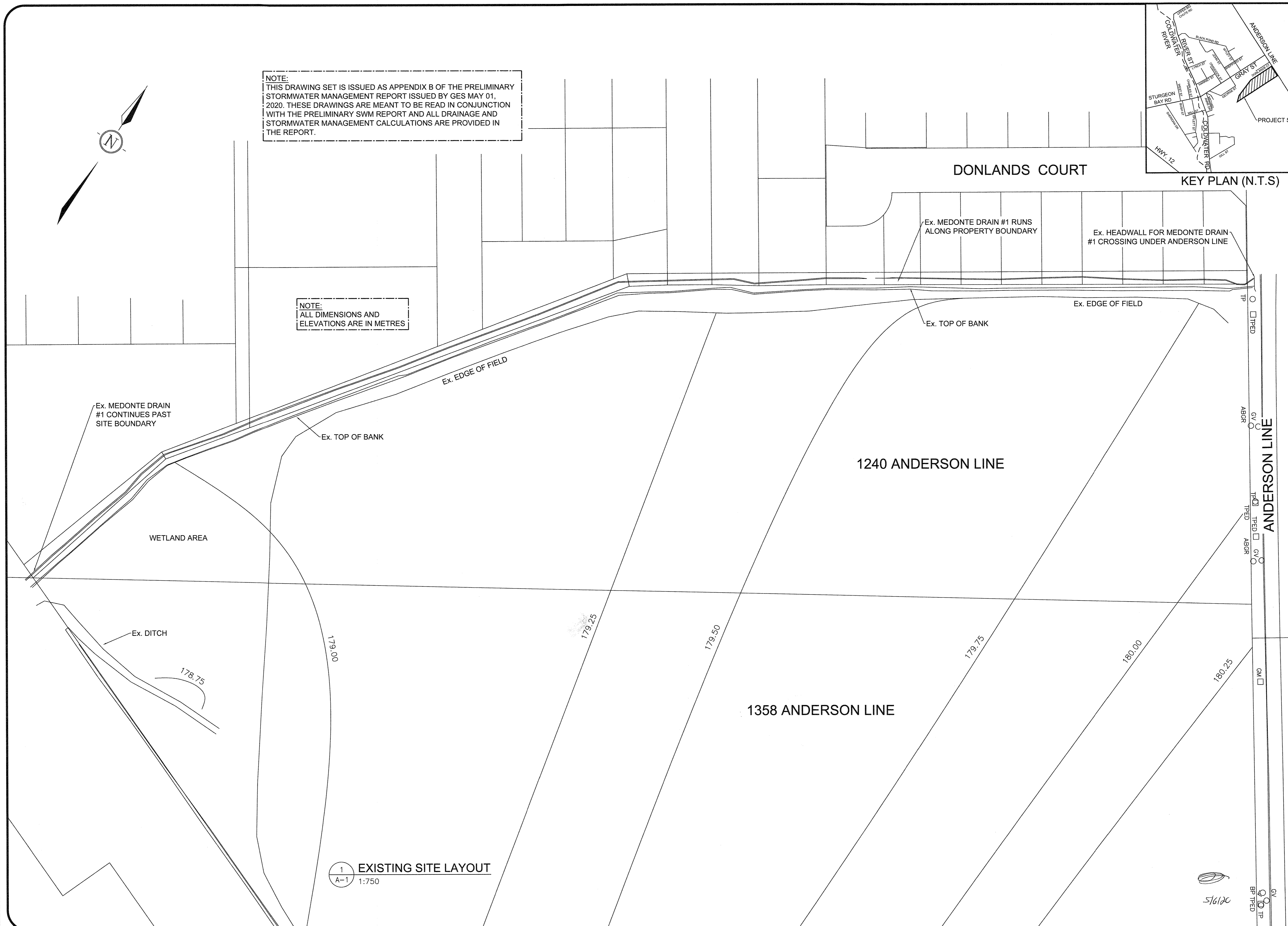
ALL RIGHTS RESERVED. THESE DRAWINGS AND ALL ASSOCIATED WORK PRODUCT ARE THE PROPERTY OF GRANITE ENGINEERING SERVICES (GES). THESE DRAWINGS ARE PROTECTED BY COPYRIGHT LAWS AND MAY NOT BE REPRODUCED IN ANY MANNER, OR FOR ANY PURPOSE, EXCEPT WITH WRITTEN PERMISSION OF THE COPYRIGHT HOLDER. IN THE EVENT THAT GES IS NOT PAID IN FULL FOR THEIR WORK, THESE DRAWINGS AND ALL ASSOCIATED WORK PRODUCTS SHALL BE RETURNED IMMEDIATELY AND GES RESERVES THE RIGHT TO WITHDRAW THESE DRAWINGS FROM USE IN ANY PERMITS OR CONSTRUCTION PROJECTS.

OWNER TO CONTACT GES TO PRE-DEFINE SITE REVIEW TIMES. FAILURE TO CONTACT GES COULD ALLEVIATE GES OF ANY/ALL RESPONSIBILITY FOR THIS PROJECT



NOTE:
THIS DRAWING SET IS ISSUED AS APPENDIX B OF THE PRELIMINARY STORMWATER MANAGEMENT REPORT ISSUED BY GES MAY 01, 2020. THESE DRAWINGS ARE MEANT TO BE READ IN CONJUNCTION WITH THE PRELIMINARY SWM REPORT AND ALL DRAINAGE AND STORMWATER MANAGEMENT CALCULATIONS ARE PROVIDED IN THE REPORT.

NOTE:
ALL DIMENSIONS AND ELEVATIONS ARE IN METRES



1 EXISTING SITE LAYOUT
A-1 1:750

Granite Engineering Services
a division of 1709425 Ontario Limited
BRANTFORD, ONTARIO
O 705-640-0401
graniteengineering.com

SCALE NOTED
DRAWN BY P. B. BRUNSKILL
CHECKED BY S.J.K., P.B.B.
DATE MAY 06/20
PROFESSIONAL ENGINEER OF ONTARIO

FILE: 2018-0017-1
PROJECT TITLE: 2018-0017

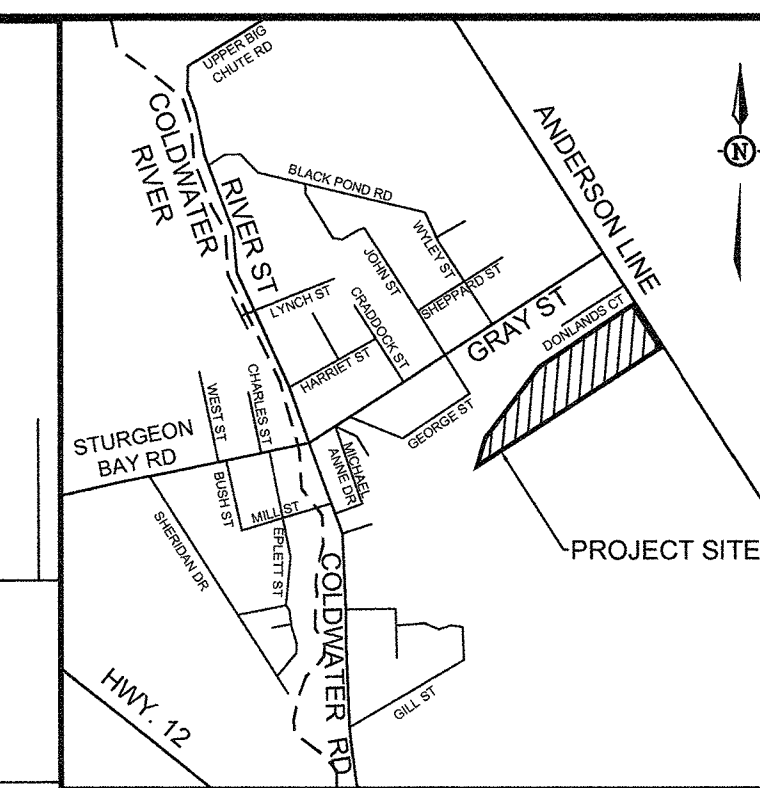
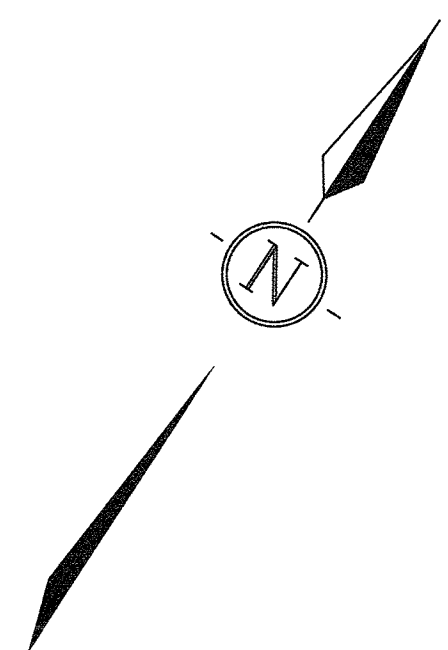
CIPPONERI SUBDIVISION
1240 ANDERSON LINE
COLDWATER
ONTARIO

CONTRACTOR: TBD

SHEET TITLE: EXISTING SITE LAYOUT

REV.	SHEET	SHEET No.
A	1 of 5	A-1

5/6/20



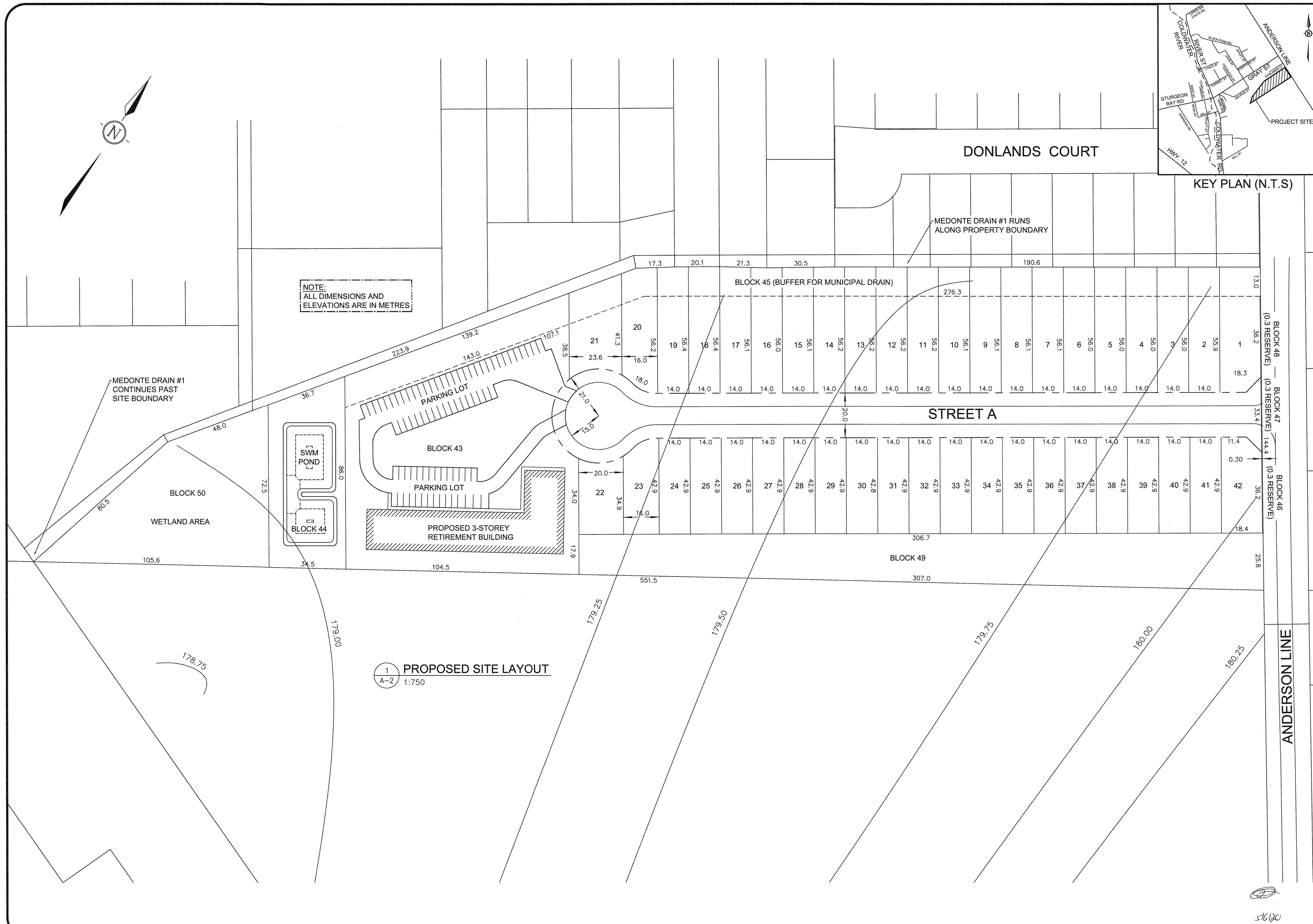
REVISIONS			
#	DATE	BY	DESCRIPTION
A	05/06/20	PB	ISSUED FOR DRAFT PLAN

THESE DRAWINGS ARE NOT TO BE SCALED AND IN THE CASE OF A DISCREPANCY PLEASE CONTACT GRANITE ENGINEERING SERVICES PRIOR TO CONSTRUCTION

ALL RIGHTS RESERVED. THESE DRAWINGS AND ALL ASSOCIATED WORK PRODUCT ARE THE PROPERTY OF GRANITE ENGINEERING SERVICES (GES). THESE DRAWINGS ARE PROTECTED BY COPYRIGHT LAWS AND MAY NOT BE REPRODUCED IN ANY MANNER, OR FOR ANY PURPOSE, EXCEPT WITH WRITTEN PERMISSION OF THE COPYRIGHT HOLDER. IN THE EVENT THAT GES IS NOT PAID IN FULL FOR THEIR WORK, THESE DRAWINGS AND ALL ASSOCIATED WORK PRODUCTS SHALL BE RETURNED IMMEDIATELY AND GES RESERVES THE RIGHT TO WITHDRAW THESE DRAWINGS FROM USE IN ANY PERMITS OR CONSTRUCTION PROJECTS.

OWNER TO CONTACT GES TO PRE-DEFINE SITE REVIEW TIMES. FAILURE TO CONTACT GES COULD ALLEVIATE GES OF ANY/ALL RESPONSIBILITY FOR THIS PROJECT

NOTE:
ALL DIMENSIONS AND ELEVATIONS ARE IN METRES



Granite Engineering Services
a division of 1709425 Ontario Limited
BRACEBRIDGE, ONTARIO
O 705-640-0401
www.graniteengineering.com

SCALE AS NOTED
DATE MAY 06/20
DRAWN BY S.J.K. CHECKED BY P.B.B.

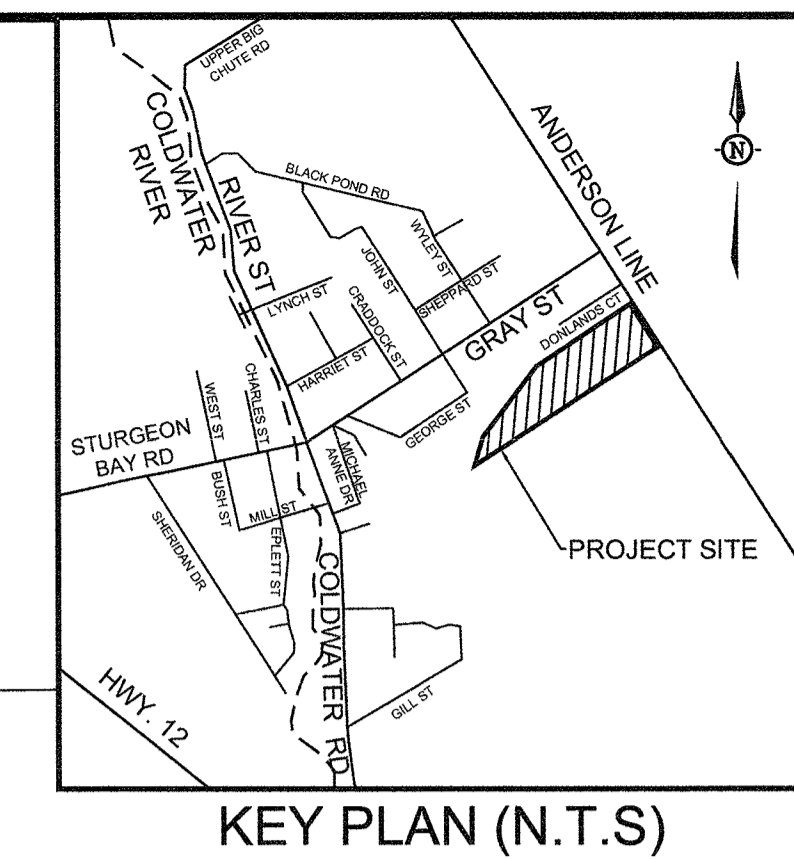
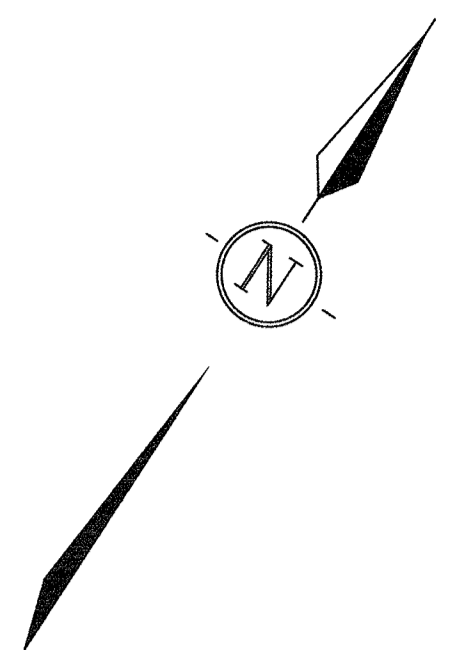
FILE 2018-001A-2 PROJECT No. 2018-0017

PROJECT TITLE
CIPPONERI SUBDIVISION
1240 ANDERSON LINE
COLDWATER
ONTARIO

CONTRACTOR
TBD

SHEET TITLE
PROPOSED SITE LAYOUT

REV.	SHEET	SHEET No.
A	2 of 5	A-2



REVISIONS			
#	DATE	BY	DESCRIPTION
A	05/06/20	PB	ISSUED FOR DRAFT PLAN

THESE DRAWINGS ARE NOT TO BE SCALED AND IN THE CASE OF A DISCREPANCY PLEASE CONTACT GRANITE ENGINEERING SERVICES PRIOR TO CONSTRUCTION

ALL RIGHTS RESERVED. THESE DRAWINGS AND ALL ASSOCIATED WORK PRODUCT ARE THE PROPERTY OF GRANITE ENGINEERING SERVICES (GES). THESE DRAWINGS ARE PROTECTED BY COPYRIGHT LAWS AND MAY NOT BE REPRODUCED IN ANY MANNER, OR FOR ANY PURPOSE, EXCEPT WITH WRITTEN PERMISSION OF THE COPYRIGHT HOLDER. IN THE EVENT THAT GES IS NOT PAID IN FULL FOR THEIR WORK, THESE DRAWINGS AND ALL ASSOCIATED WORK PRODUCTS SHALL BE RETURNED IMMEDIATELY AND GES RESERVES THE RIGHT TO WITHDRAW THESE DRAWINGS FROM USE IN ANY PERMITS OR CONSTRUCTION PROJECTS.

OWNER TO CONTACT GES TO PRE-DEFINE SITE REVIEW TIMES. FAILURE TO CONTACT GES COULD ALLEVIATE GES OF ANY/ALL RESPONSIBILITY FOR THIS PROJECT

LEGEND

- 101: DRAINAGE AREA ID
- 101: CURVE NUMBER
- 1.14 86.0: AREA (ha)
- : EXISTING DRAINAGE AREA BOUNDARY
- : EXTERNAL DRAINAGE AREA BOUNDARY
- : EXISTING FLOW DIRECTION
- ~: EXISTING MUNICIPAL DRAIN
- 180.00: EXISTING CONTOURS

NOTE: AREAS ON NORTHEAST SIDE OF ANDERSON LINE DO NOT CONTRIBUTE RUNOFF TO THE SITE.

NOTE: EXTERNAL DRAINAGE AREAS THAT CONTRIBUTE RUNOFF TO THE SITE ARE OUTSIDE OF PROPOSED DEVELOPMENT LIMITS.

NOTE: AREAS OUTSIDE OF NOTED DRAINAGE AREAS DO NOT CONTRIBUTE RUNOFF TO THE SITE.

1 DP-1 EXISTING DRAINAGE AREAS 1:1000

TITLE	DESCRIPTION
Ext. 1	EXTERNAL AREA DRAINING TO MUNICIPAL DRAIN
Ext. 2	EXTERNAL AREA DRAINING TO EXISTING ON-SITE WETLAND
101	ON-SITE AREA DRAINING TO MUNICIPAL DRAIN
102	ON-SITE AREA DRAINING TO EXISTING ON-SITE WETLAND
103	EXISTING ON-SITE WETLAND

Granite Engineering Services
a division of 1709425 Ontario Limited
BRACEBRIDGE, ONTARIO
O 705-640-0401
graniteengineering.com

SCALE AS NOTED
DATE MAY 06/20
DRAWN BY S.J.K. CHECKED BY P.B.B.
PROFESSIONAL ENGINEER
P. B. BRUNSKILL
PROVINCE OF ONTARIO

FILE 2018-0013.DWG PROJECT No. 2018-0017

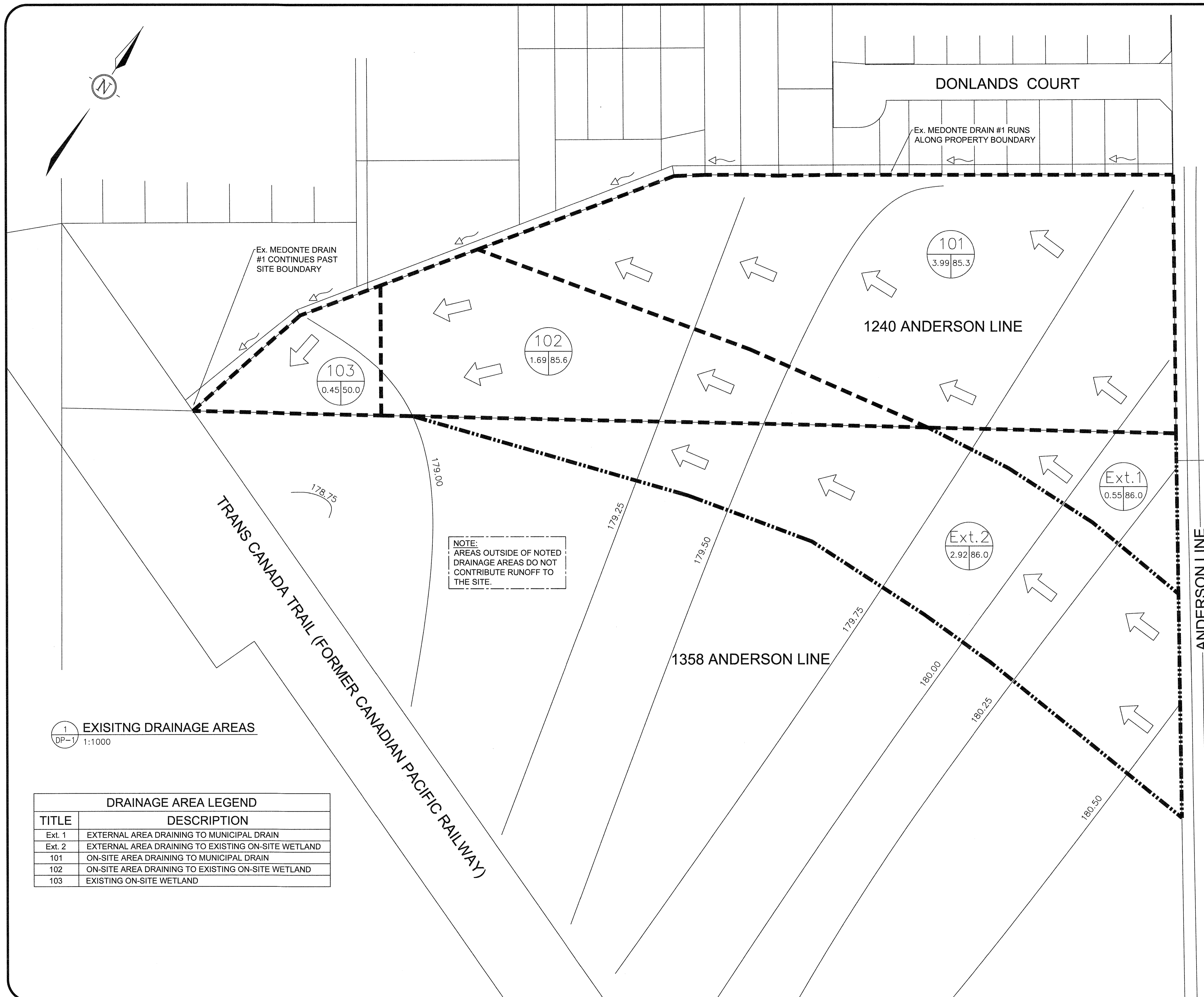
PROJECT TITLE
CIPPONERI SUBDIVISION
1240 ANDERSON LINE
COLDWATER
ONTARIO

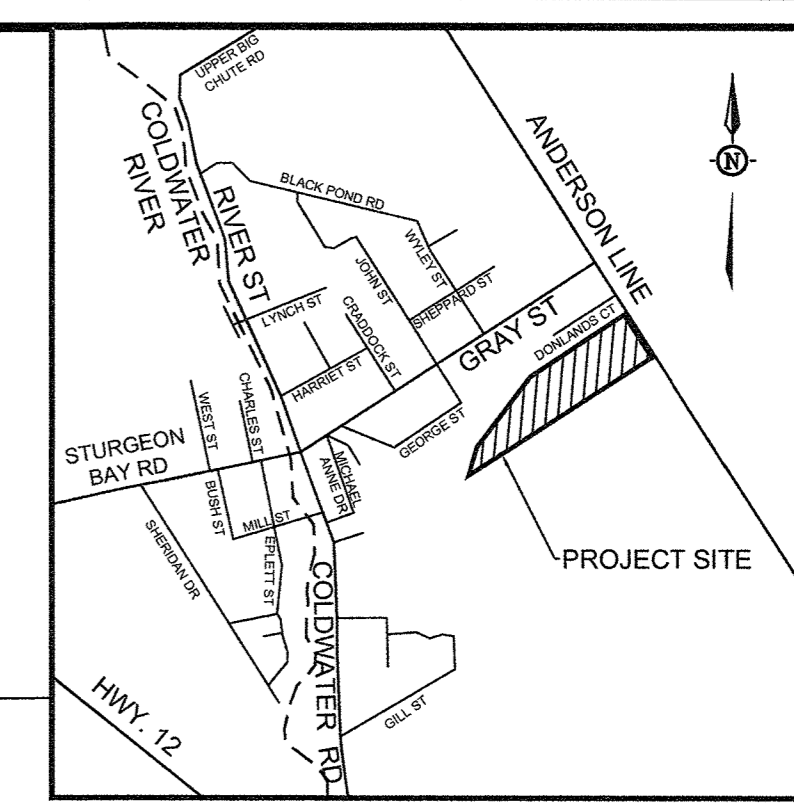
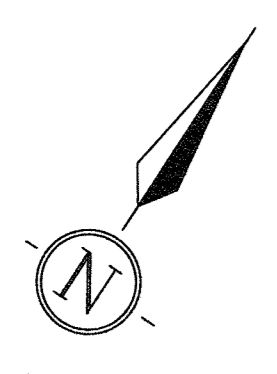
CONTRACTOR
TBD

SHEET TITLE
EXISTING DRAINAGE AREAS

REV.	SHEET	SHEET No.
A	3 of 5	DP-1

5/16/20





REVISIONS		
#	DATE	DESCRIPTION
A	05/06/20	ISSUED FOR DRAFT PLAN

THESE DRAWINGS ARE NOT TO BE SCALED AND IN THE CASE OF A DISCREPANCY PLEASE CONTACT GRANITE ENGINEERING SERVICES PRIOR TO CONSTRUCTION

ALL RIGHTS RESERVED. THESE DRAWINGS AND ALL ASSOCIATED WORK PRODUCT ARE THE PROPERTY OF GRANITE ENGINEERING SERVICES (GES). THESE DRAWINGS ARE PROTECTED BY COPYRIGHT LAWS AND MAY NOT BE REPRODUCED IN ANY MANNER, OR FOR ANY PURPOSE, EXCEPT WITH WRITTEN PERMISSION OF THE COPYRIGHT HOLDER. IN THE EVENT THAT GES IS NOT PAID IN FULL FOR THEIR WORK, THESE DRAWINGS AND ALL ASSOCIATED WORK PRODUCTS SHALL BE RETURNED IMMEDIATELY AND GES RESERVES THE RIGHT TO WITHDRAW THESE DRAWINGS FROM USE IN ANY PERMITS OR CONSTRUCTION PROJECTS.

OWNER TO CONTACT GES TO PRE-DEFINE SITE REVIEW TIMES. FAILURE TO CONTACT GES COULD ALLEVIATE GES OF ANY/ALL RESPONSIBILITY FOR THIS PROJECT

LEGEND	
	DRAINAGE AREA ID CURVE NUMBER AREA (ha)
	DRAINAGE AREA BOUNDARY
	EXTERNAL DRAINAGE AREA BOUNDARY
	EXISTING FLOW DIRECTION
	PROPOSED FLOW DIRECTION
	PROPOSED SWALE
	PROPOSED STORM PIPES
	EXISTING MUNICIPAL DRAIN
	EXISTING CONTOURS

NOTE: AREAS ON NORTHEAST SIDE OF ANDERSON LINE DO NOT CONTRIBUTE RUNOFF TO THE SITE.

NOTE: EXTERNAL DRAINAGE AREAS THAT CONTRIBUTE RUNOFF TO THE SITE ARE OUTSIDE OF PROPOSED DEVELOPMENT LIMITS.

NOTE: AREAS OUTSIDE OF NOTED DRAINAGE AREAS DO NOT CONTRIBUTE RUNOFF TO THE SITE.

1 PROPOSED DRAINAGE AREAS
DP-2 1:1000

DRAINAGE AREA LEGEND	
TITLE	DESCRIPTION
Ext. 1	EXTERNAL AREA RUNOFF TO PROPOSED SWALE
Ext. 2	EXTERNAL AREA RUNOFF TO PROPOSED SWALE
201	DIRECT CLEAN RUNOFF TO MUNICIPAL DRAIN
202	RUNOFF TO MUNICIPAL DRAIN VIA STORM SEWERS & OGS
203	RUNOFF TO SWM POND VIA STORM SEWERS & OGS
204	RUNOFF TO SWM POND VIA STORM SEWERS & OGS
205	RUNOFF TO PROPOSED SWALE
206	EXISTING ON-SITE WETLAND
207	LANDSCAPED AREA (RUNOFF CONTAINED ON-SITE)

Granite Engineering Services
a division of 1709425 Ontario Limited
BRACEBRIDGE, ONTARIO
O 705-640-0401
www.graniteengineering.com

SCALE: AS NOTED
DATE: MAY 06/20
DRAWN BY: P. B. BRUNSKILL
CHECKED BY: S. J. K., P. B. B.
PROJECT No: 2018-0017

CIPPONERI SUBDIVISION
1240 ANDERSON LINE
COLDWATER
ONTARIO

CONTRACTOR: TBD

SHEET TITLE: PROPOSED DRAINAGE AREAS

REV.	SHEET	SHEET No.	SHEET No.
A	4 of 5	DP-2	

5/6/20

REVISIONS

#	DATE	BY	DESCRIPTION
A	05/06/20	PB	ISSUED FOR DRAFT PLAN

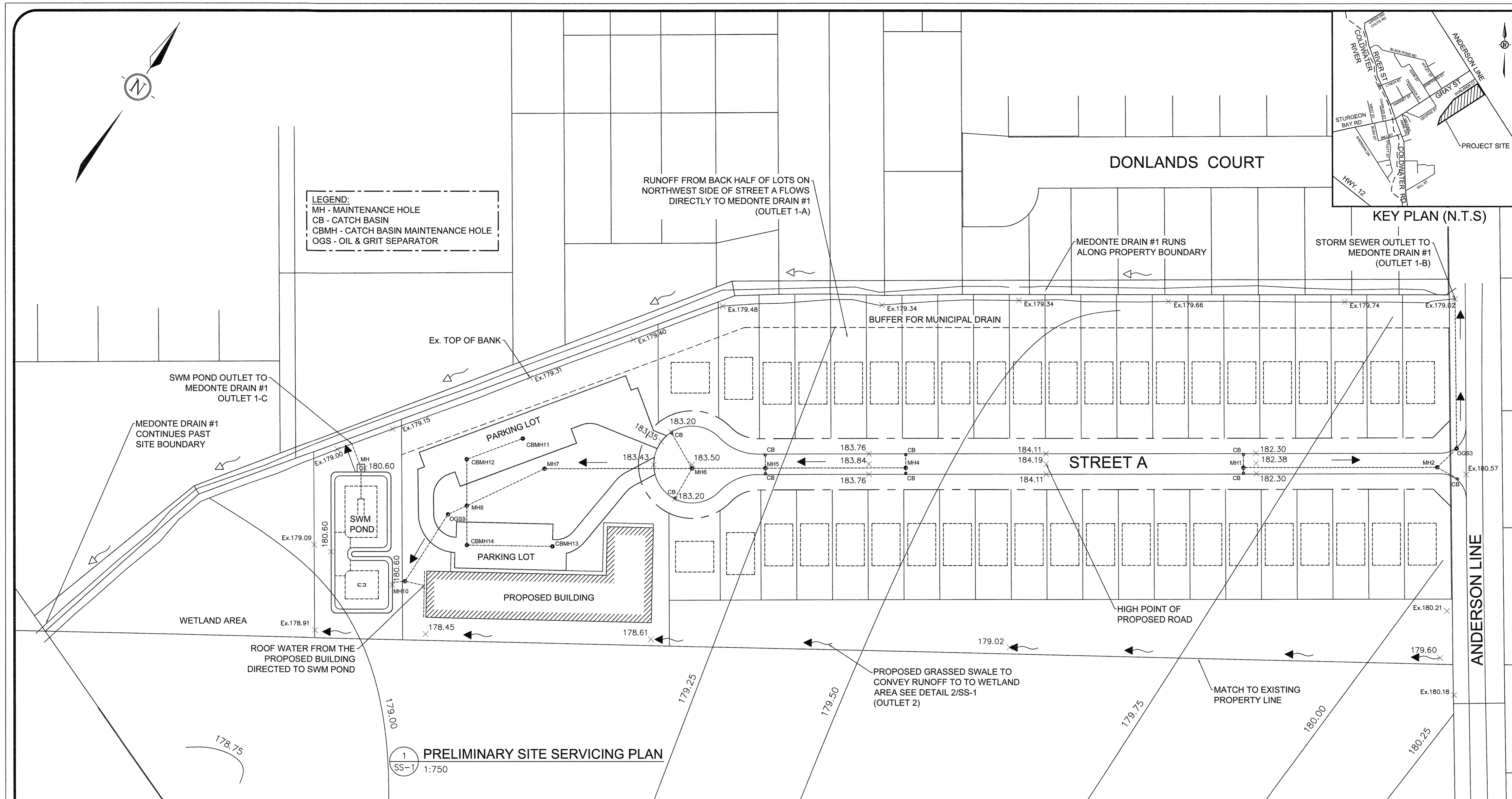
THESE DRAWINGS ARE NOT TO BE SCALED AND IN THE CASE OF A DISCREPANCY PLEASE CONTACT GRANITE ENGINEERING SERVICES PRIOR TO CONSTRUCTION

ALL RIGHTS RESERVED. THESE DRAWINGS AND ALL ASSOCIATED WORK PRODUCT ARE THE PROPERTY OF GRANITE ENGINEERING SERVICES (GES). THESE DRAWINGS ARE PROTECTED BY COPYRIGHT LAWS AND MAY NOT BE REPRODUCED IN ANY MANNER, OR FOR ANY PURPOSE, EXCEPT WITH WRITTEN PERMISSION OF THE COPYRIGHT HOLDER. IN THE EVENT THAT GES IS NOT PAID IN FULL FOR THEIR WORK, THESE DRAWINGS AND ALL ASSOCIATED WORK PRODUCTS SHALL BE RETURNED IMMEDIATELY AND GES RESERVES THE RIGHT TO WITHDRAW THESE DRAWINGS FROM USE IN ANY PERMITS OR CONSTRUCTION PROJECTS.

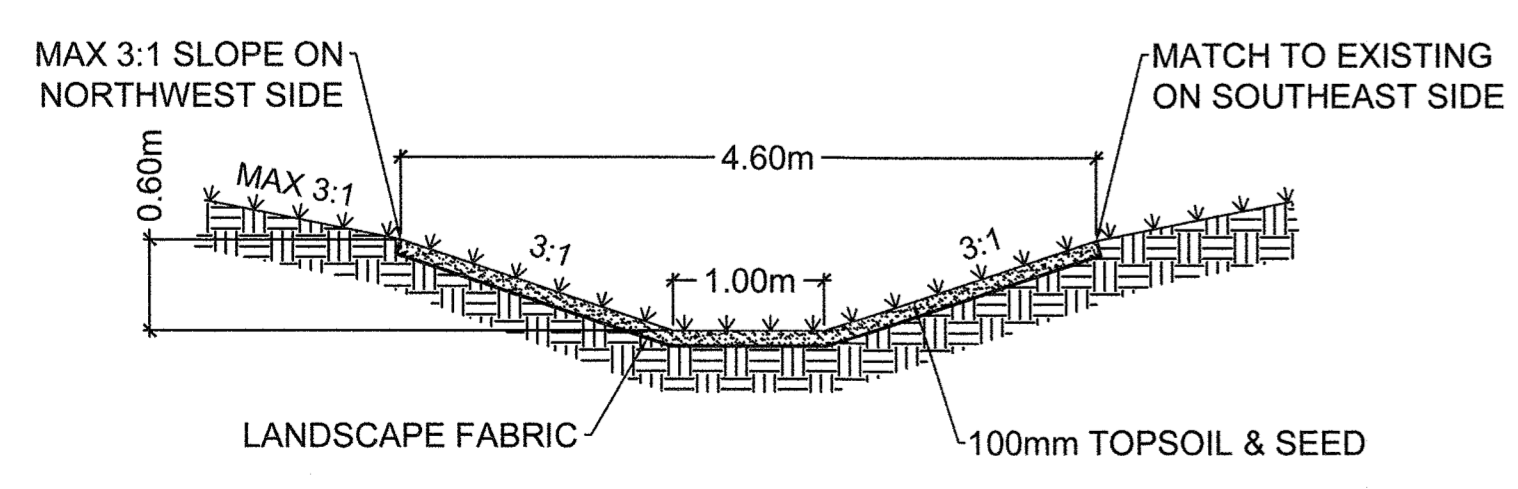
OWNER TO CONTACT GES TO PRE-DEFINE SITE REVIEW TIMES. FAILURE TO CONTACT GES COULD ALLEVIATE GES OF ANY/ALL RESPONSIBILITY FOR THIS PROJECT

LEGEND

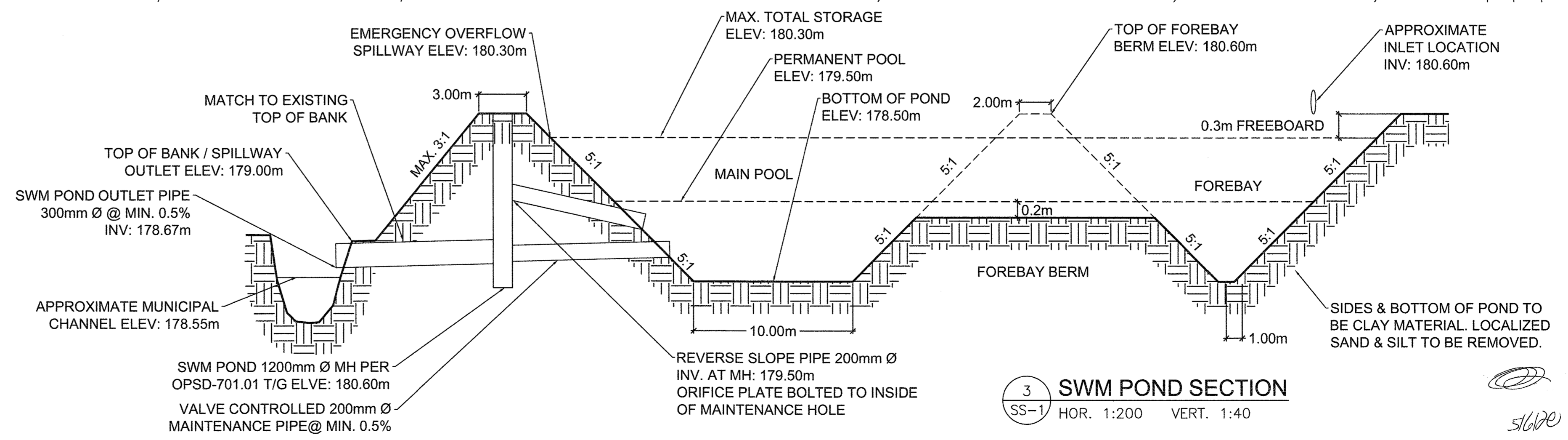
- EXISTING FLOW DIRECTION
- PROPOSED FLOW DIRECTION
- PROPOSED SWALE
- PROPOSED STORM PIPES
- EXISTING CHANNEL
- 180.00 PROPOSED ELEVATION
- Ex.180.00 EXISTING ELEVATION
- 180.00 EXISTING CONTOURS



1 PRELIMINARY SITE SERVICING PLAN
SS-1 1:750



2 GRASSED SWALE SECTION
SS-1 N.T.S.



3 SWM POND SECTION
SS-1 HOR. 1:200 VERT. 1:40



SCALE	AS NOTED
DATE	MAY 06/20
DRAWN BY	S.J.K. P.B.B.
CHECKED BY	S.J.K. P.B.B.
FILE	2018-001-SS-1
PROJECT NO.	2018-0017

CIPPONERI SUBDIVISION
1240 ANDERSON LINE
COLDWATER
ONTARIO

CONTRACTOR
TBD

SHEET TITLE
PRELIMINARY SITE SERVICING PLAN

REV.	SHEET	SHEET No.
A	5 of 5	SS-1

5600