



Simcoe County Data Consortium

November 30th, 2018

Simcoe County Administrative Building

simcoe.ca

Overview



- CDP Updates
 - Leads Teleconference meeting updates
 - Data Purchasing Working Group meeting updates
 - New tables
- New Business
 - Using Custom Geographies
 - Examples of data available through Taxfiler
 - 2018 Annual Meeting
 - Sharing what we've done
- Local Updates
 - Living Wage
- Next Meeting





Leads Teleconference meeting updates:

- There was a meeting on October 16th, 2018



Data Purchase and Access Working Group Meeting

- There was a meeting on October 29th, 2018 and November 26th, 2018
 - **Acquisitions update**
 - **NEET (Not in Education, Employment or Training)**
 - **Target Group Profiles at the Household Level**
 - **Data in Production**
 - **Still to come**
 - **Market Basket Measure update**
 - **PUMF Subscriptions Services**
 - **Canada's Survey on Health of Children and Youth**



- **Market Basket Measure Update:**
 - A representative from CDP had a conversation with one of the methodologists working on the MBM at Statistics Canada. Notes are provided in a handout for those who are interested.
- **PUMF Subscriptions Services**
 - At this time a consortium made up of multiple institutions would not be eligible for a subscription to the PUMF Collection.
- **Canada's Survey on Health of Children and Youth**
 - Will run from February to June 2019. Data is expected to be out by the end of March 2020 and PUMF would be available late 2020.
 - Ontario is buying sample so data should be available at the CD level



■ Upcoming:

- Housing Statistics Program (December 18th, 2018 at 1pm)
- 3D Excel Maps with Ottawa (January, 2019)
- Big Data for Small Places and Data Analytics for Rural Transformation (February, 2019)

■ Past:

- Using the CDP Catalogue and Beyond 20/20 (October 23rd, 2018)
- Target Group Profiles – Excel Workshop (November 6th, 2018)



New Tables

Between May 31-November 30th



Census 2016

- Custom Geography Data Tables
 - Census Profile, 2016
 - Age and Sex, Census, 2016
 - Target group profile of population by employment status, Census, 2016
 - Target group profile of Aboriginal Identity, Census, 2016
 - Target group profile of population by main mode of commuting to work, Census, 2016

Taxfiler

- Migration Estimates, 2014, 2015, 2016 (CMA, CD)
- Income of Families Tables, 2016 (Province and Territory, Postal City, Rural Community, CT, CMA, CD, CA, FSA)
- Income of Individuals Tables, 2016 (Province and Territory, Postal City, Rural Community, CT, CMA, CD, CA, FSA)
- Income of Seniors Tables, 2016 (Province and Territory, Postal City, Rural Community, CT, CMA, CD, CA, FSA)
- Canadian Investment Income, 2016
- Charitable Donations, 2016
- Canadian Taxfilers, 2016
- RRSP Contributors, 2016
- Canadian Investors, 2016
- Canadian Capital Gains, 2016
- Canadian Savers, 2016



New Tables

Between May 31-November 30th



- **Canadian business counts, establishment and location counts, employment size and North American Industry Classification System (NAICS), June 2018**
- **Postal Code Conversion File, June 2017**
- **Food Statistics**
- **Building Permits, 2017**





Simcoe County Data Consortium Custom Geographies:

- Simcoe-Muskoka
- Simcoe County District School Board
 - Elementary School Catchment Areas
 - Secondary School Catchment Areas
- Simcoe Muskoka District Health Unit Boundaries
- Local Health Integration Network (LHIN) and LHIN Sub-Region Boundaries
- Early Development Instrument (EDI) Neighbourhood Boundaries



Currently Available Tables



- Census Profile, 2016
- Age and Sex, Census, 2016
- Target group profile of population by **employment status**, Census, 2016
- Target group profile of **Aboriginal Identity**, Census, 2016
- Target group profile of population by **main mode of commuting to work**, Census, 2016



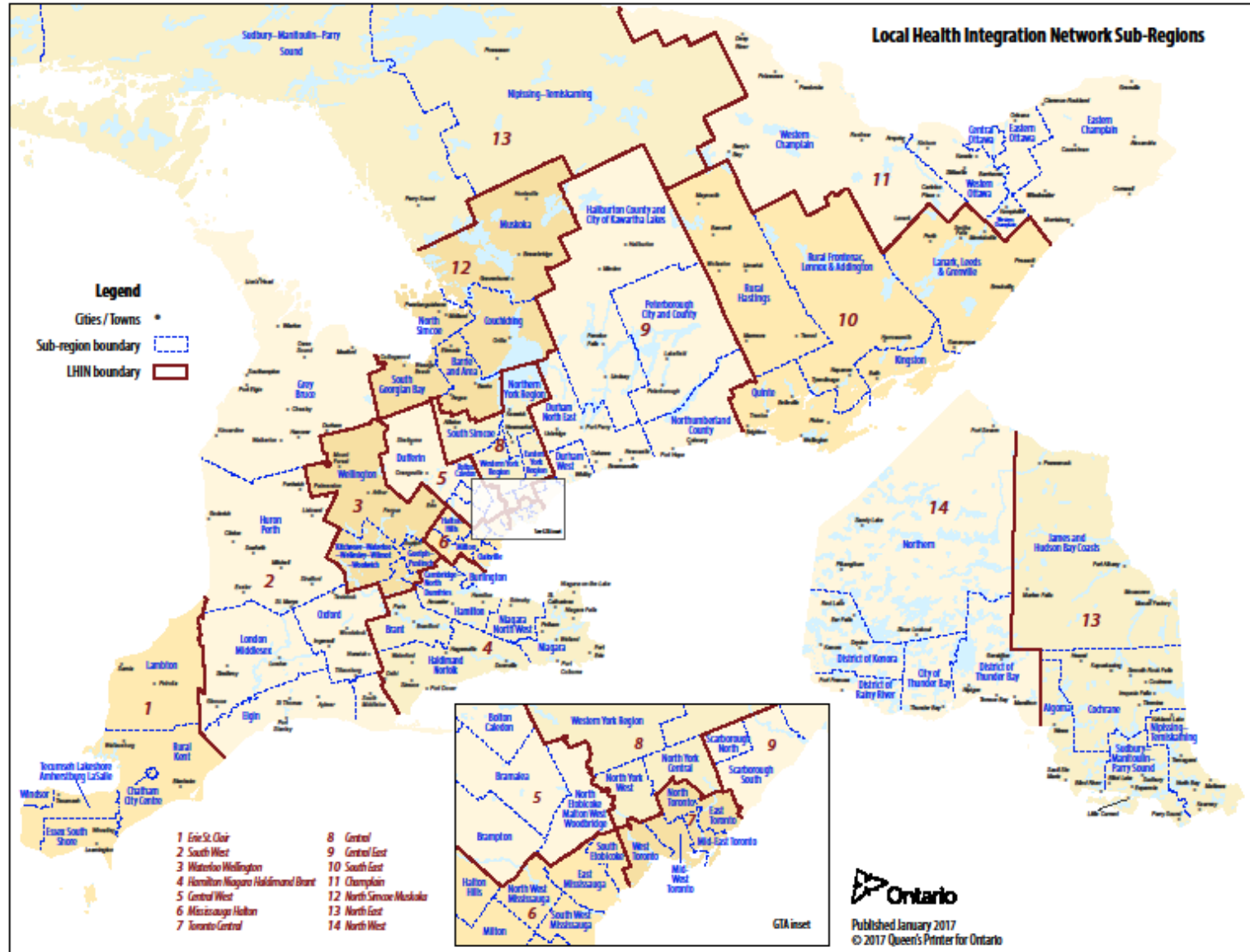
Tables In Production



- Target group profile of the **low income** population (LIM-AT)
- Target group profile of the population aged **65 years and over**
- Target group profile of **recent immigrants**
- Target group profile of the **immigrant** population
- Target group profile of population by **lone-parent** dimension
- Target group profile of the **visible minority** population
- Target group profile of the **Francophone** population
- Target group profile of population by **age groups**
- Target group profile of population with **majority income from government transfers**



LHIN and LHIN Sub-Region Boundaries

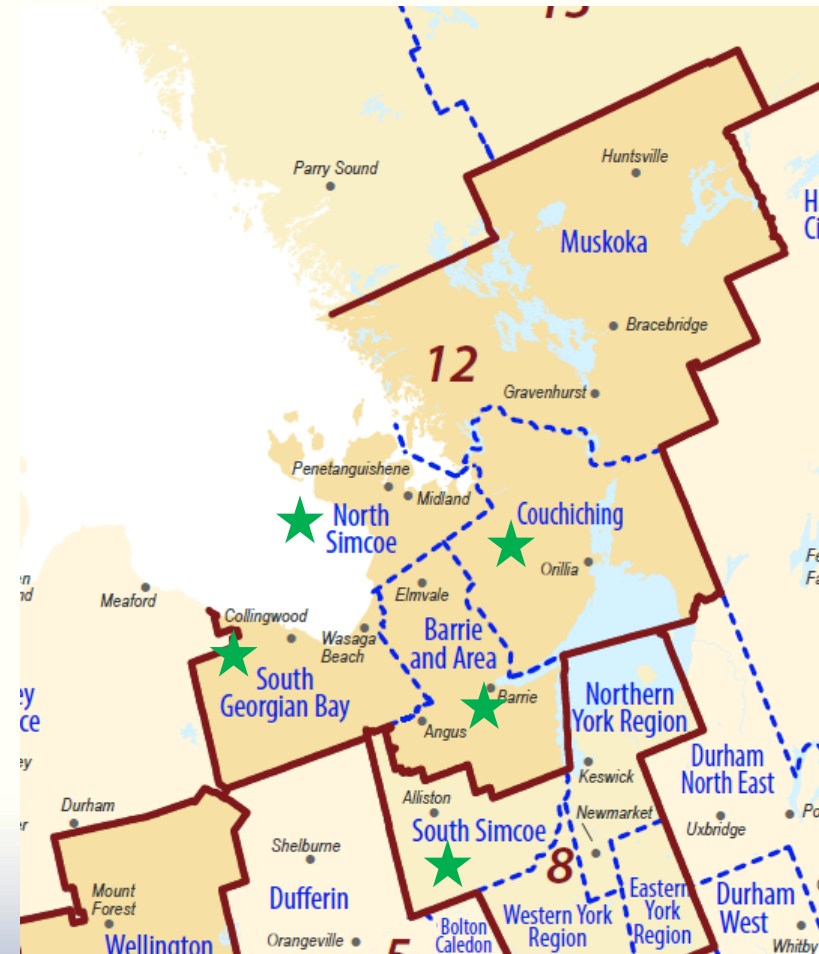
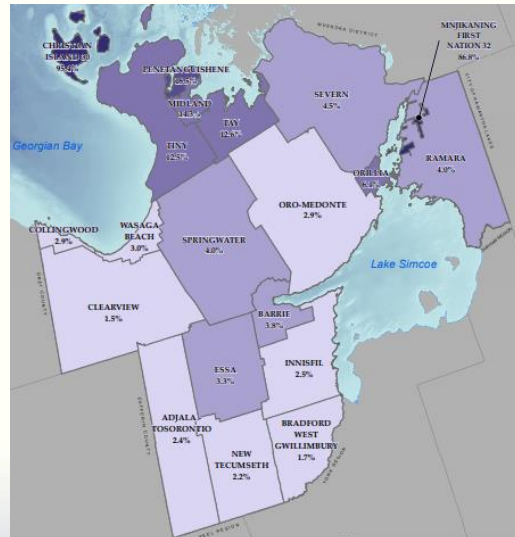


LHIN and LHIN Sub-Region Boundaries in Simcoe County



Local Health Integration Network (LHIN) and LHIN Sub-Region Boundaries

- North Simcoe Muskoka (Number 12)
 - North Simcoe
 - South Georgian Bay
 - Barrie and Area
 - Couchiching
- Central (Number 8)
 - South Simcoe

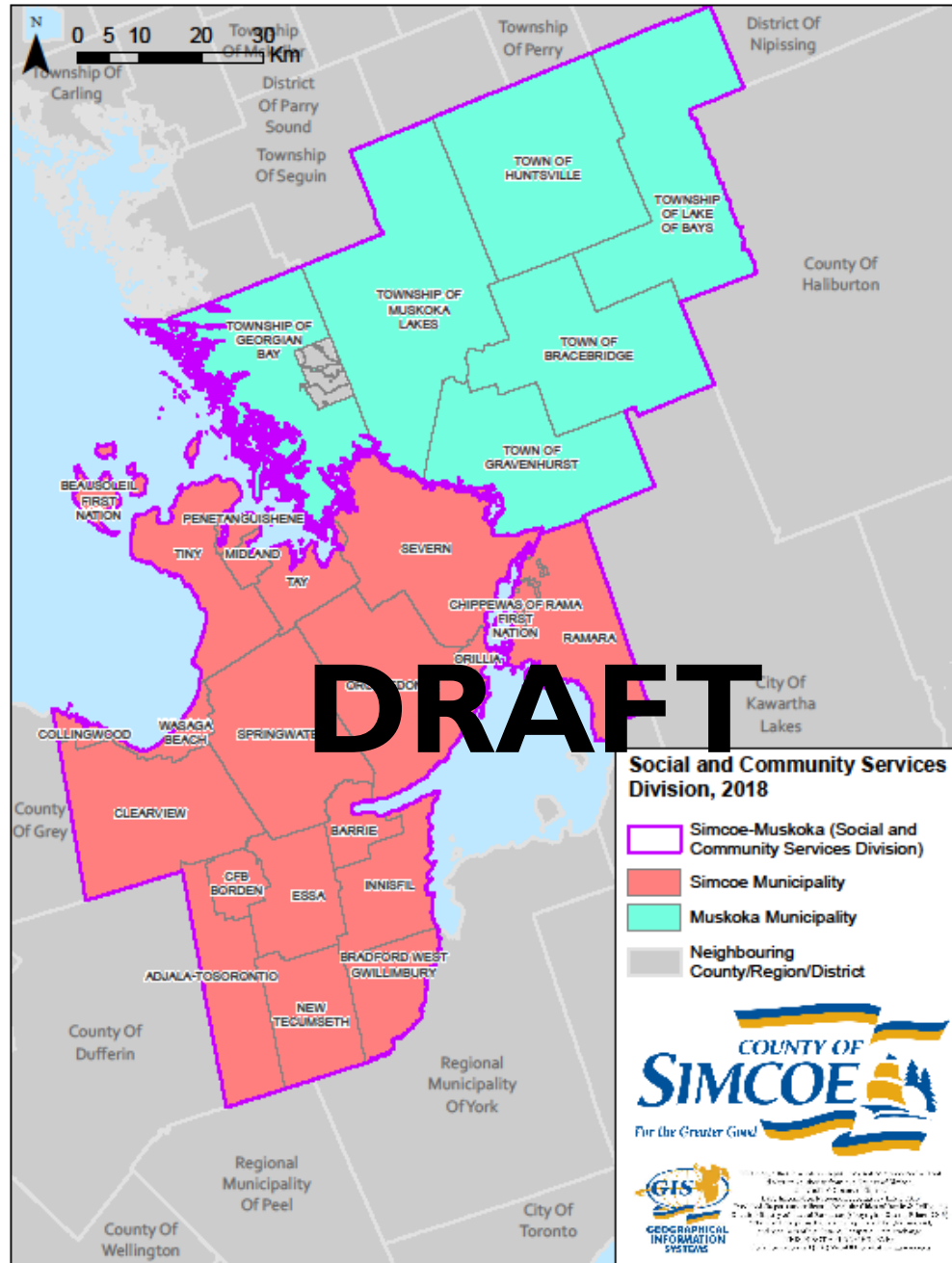


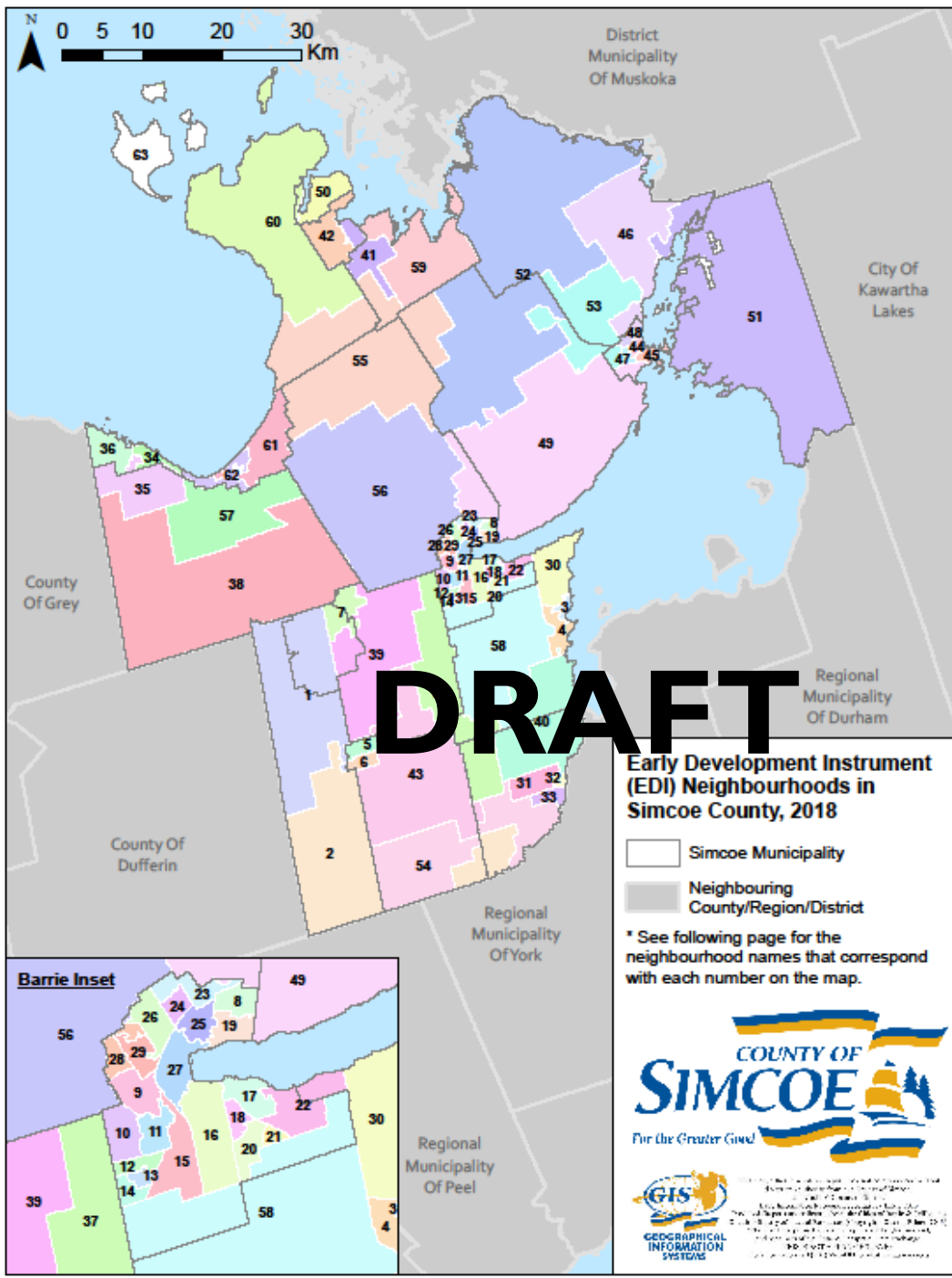
Benefit of Custom Geographies

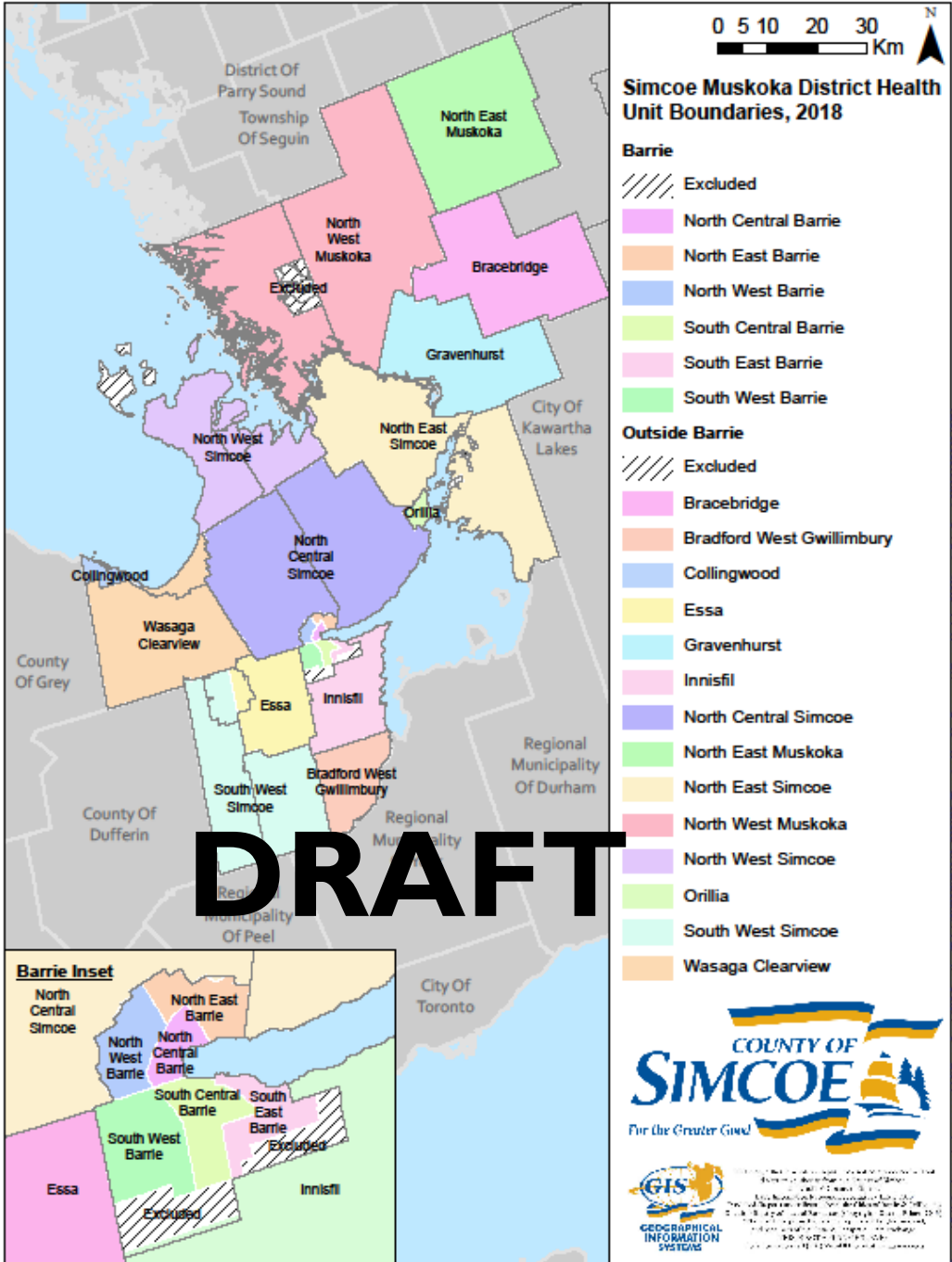


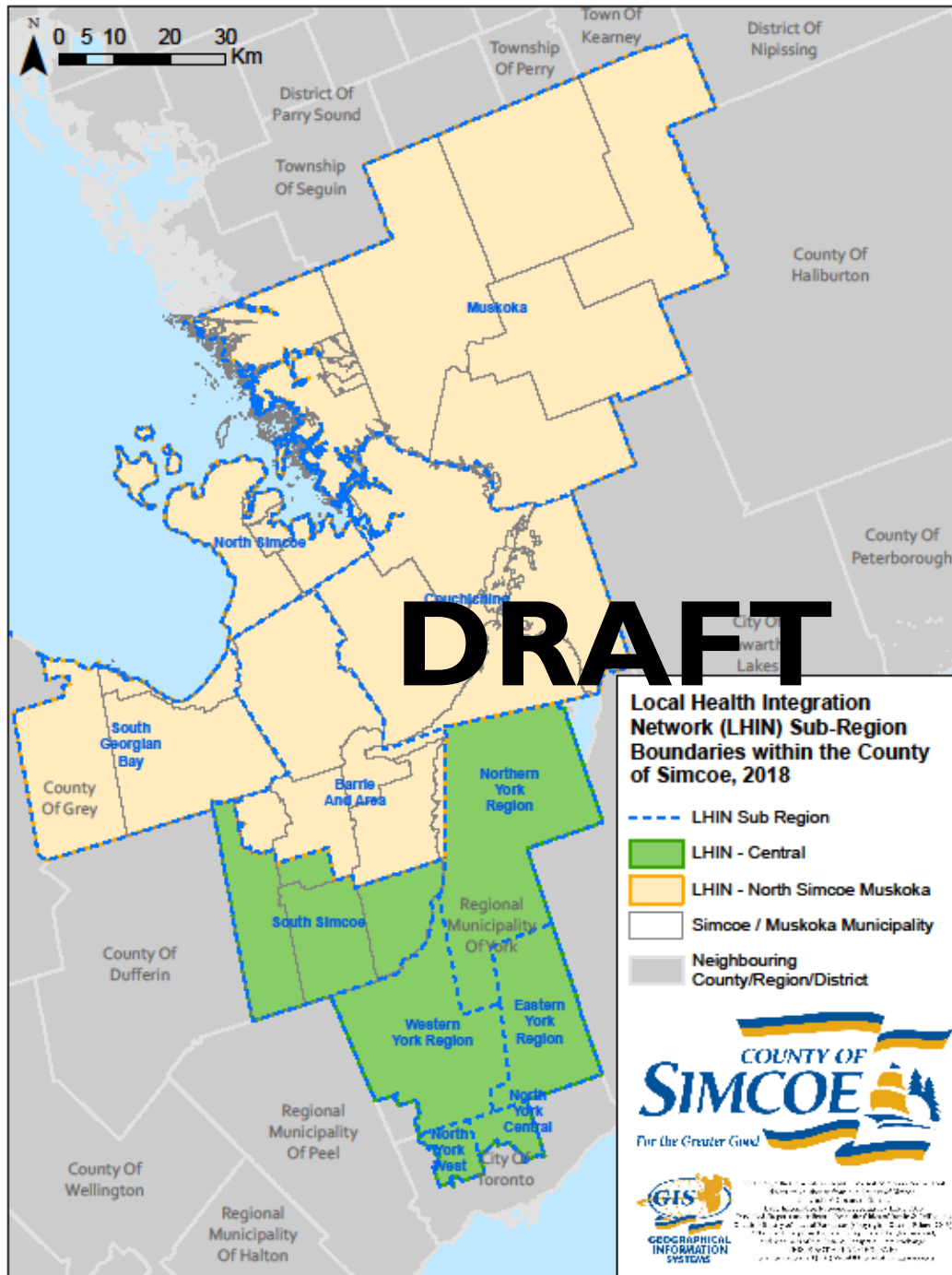
- Provides data to support organizations within our Consortium who do not work within Municipal Boundaries
- Provides additional ways to cut and understand the population within Simcoe County

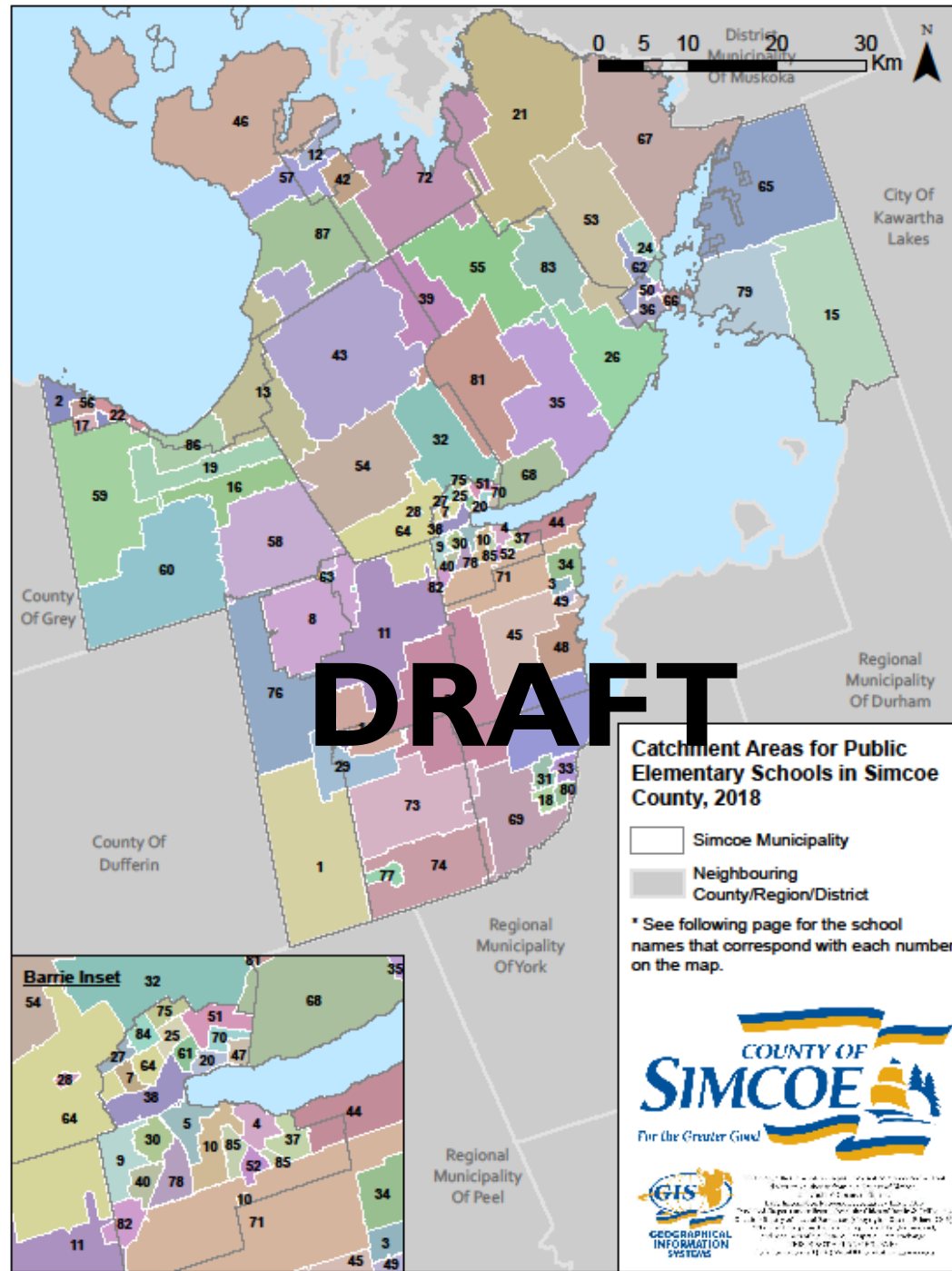


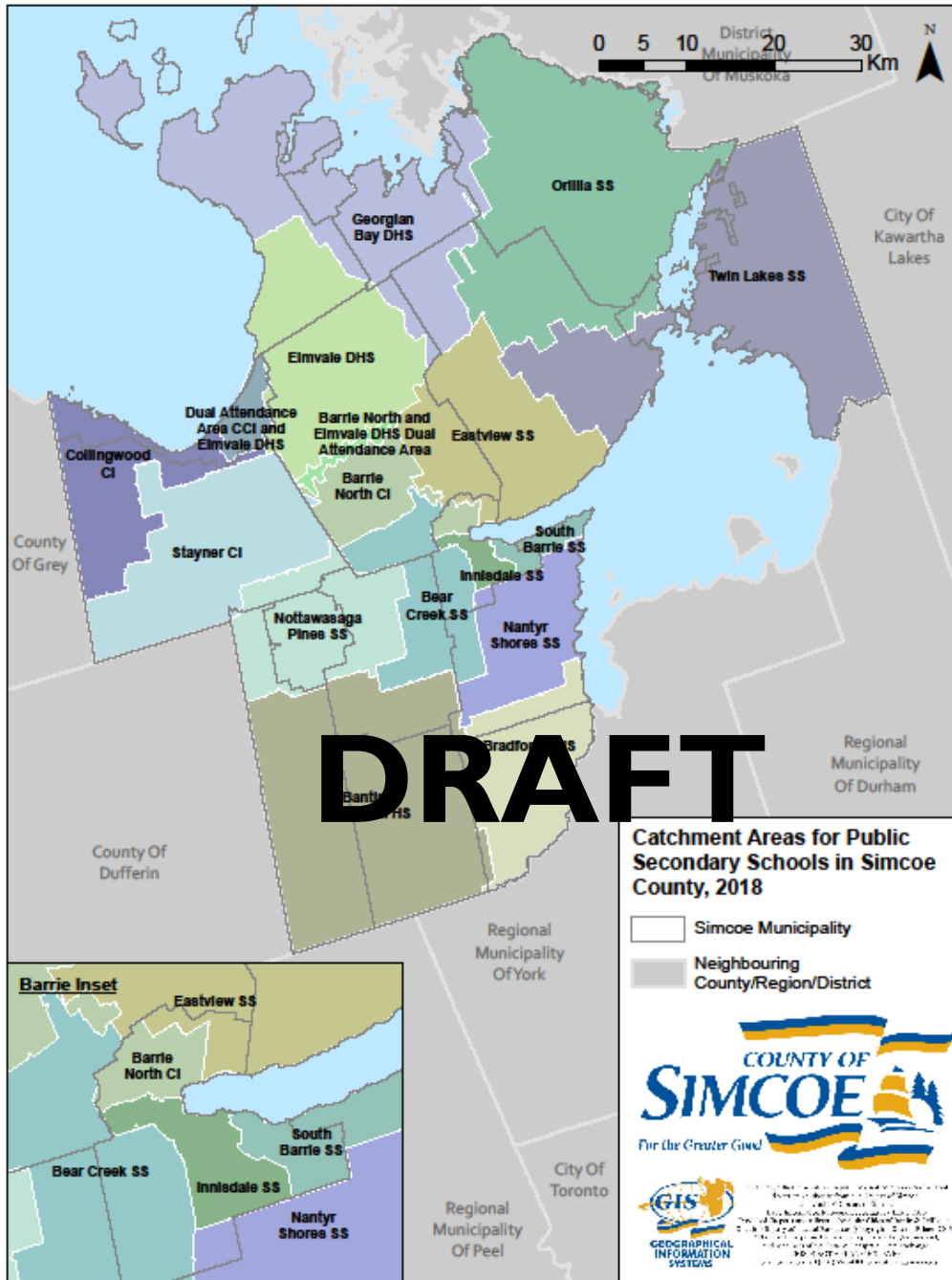














Available Taxfiler Data

A Brief Overview



What is Taxfiler (TI Family File) Data?

An annual income database produced using administrative records including:

- Canada Revenue Agency's TI income tax
- Benefit returns
- Canada Child Tax Benefits program

The population covered includes:

- All tax filers in Canada and their spouses and dependents
- Provinces and territories
- Includes individuals living in collective dwellings and on First Nation reserves
- 95% of the total estimated population in Canada in 2015



What is Taxfiler (T1 Family File) Data?

Establishes a time series:

- 1982 onward - for certain data
- 1995 onward - before-tax CFLIM (CFLIM-BT) data
- 1997 onward - after-tax CFLIM (CFLIM-AT) data

Level of geography that data is available at includes:

- Postal geographic scales
- Census geographic scales



Level of Geography



Census geographic scales:

21 - Census division

31 - Federal electoral district

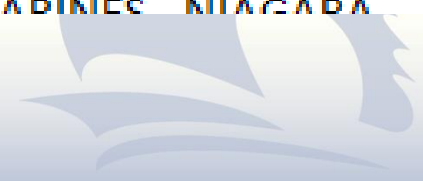
41 - Census metropolitan area

42 - Census agglomeration

51 - Economic region

61 - Census tract

Jx SIMCOE	
D	E
Level of geo	Place name
31	SCARBOROUGH-ROUGE PARK
21	SIMCOE
31	SIMCOE NORTH
31	SIMCOE-GREY
31	SPADINA-FORT YORK
31	ST. CATHARINES
41	ST. CATHARINES - NIAGARA
61	ST. CATHARINES - NIAGARA

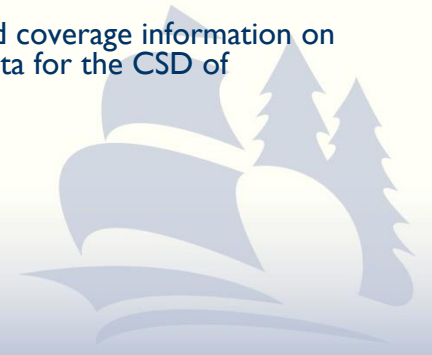


Caution for Using Lower Levels of Geography



- The TIFF database is comprised of records aggregated at the Postal Code level
- Postal Codes do not respect census geographic boundaries and therefore are often linked to more than one census geographic area (or FED) of the same type
- All TIFF records associated with a specific Postal Code are assigned to only the one CSD (or census geographic boundary)
- Consequently, a certain amount of under coverage or over coverage is created for almost all CSDs (mostly in rural areas and low population areas) or lower geographic areas such as census tracts

The Excel document “CSD_Coverage_CensusVsTIFF_2011.xlsx” can be consulted for more detailed coverage information on specific CSDs. See the “CSD Detailed Coverage Table” in the Excel file to check the quality of the data for the CSD of interest.



Over and Under Coverage at the Census Subdivision Level



Census Subdivision	2011 TIFF	2011 Census	Coverage
Adjala-Tosorontio	7,280	10,603	Under coverage
Barrie	132,640	135,711	Under coverage
Bradford West Gwillimbury	28,080	28,077	Over coverage
Christian Island	150	1,282	Under coverage
Clearview	13,740	13,734	Over coverage
Collingwood	19,930	19,241	Over coverage
Essa	16,720	18,505	Under coverage
Innisfil	33,600	33,079	Over coverage
Midland	16,190	16,572	Under coverage
Mnjikaning First Nation	-	870	Under coverage
New Tecumseth	31,970	30,234	Over coverage
Orillia	36,790	30,586	Over coverage
Oro-Medonte	11,660	20,078	Under coverage
Penetanguishene	8,650	9,111	Under coverage
Ramara	8,050	9,275	Under coverage
Severn	13,960	12,377	Over coverage
Springwater	18,710	18,223	Over coverage
Tay	9,850	9,736	Over coverage
Tiny	10,810	11,232	Under coverage
Wasaga Beach	17,840	17,537	Over coverage



- To maintain confidentiality, data cells are suppressed whenever:
 - Areas comprise less than 100 taxfilers
 - Cells represent less than 15 observations
 - Cells are dominated by a single taxfiler
 - Cells for median income are based on a rounded count of less than 20 taxfilers
- Suppressed data may occur within one area or between areas.



Data Available



About ▼ Resources ▼ News ▼

Find Data

Search our Canadian datasets by applying the filters below

Topics

Product Title

Add part, or all of the title

Apply Filters

Reset Filters

Product Group

- Survey of Financial Security
- Survey of Household Spending (SHS)
- Taxfiler (T1FF) - Financial Data and Charitable Donations
- Taxfiler (T1FF) - Income of Families
- Taxfiler (T1FF) - Income of Individuals
- Taxfiler (T1FF) - Income of Seniors
- Taxfiler (T1FF) - Migration Estimates
- Taxfiler (T1FF) - Working Poor and Income inequality
- Uniform Crime Reporting Survey (UCR)
- Welfare Incomes

Advantages & Disadvantages



Advantages

- The population covered includes individuals living in collective dwellings and on Indian reserves
- Data is available annually
- It also has the advantage of providing data for very detailed geographic areas
- Taxfiler variables available includes: age, sex, count of taxfilers, count of taxfilers by family type, number of children (dependents), sources of income (including gov'n't transfer info), total and median income, total and median after-tax income, and low income status

Disadvantages

- Information needed to construct the economic family and household is not available, only units of analysis available on T1FF are “census families and persons not in census families” and “individuals”
- Census Division data is available for 2016, however, the Census Subdivision data is only available for 2014 as of now
- Under-coverage/over-coverage exists for Census Subdivision Data

UPDATES TO DATA VARIABLES:

**LOW INCOME MEASURE
CANADA CHILD BENEFIT**

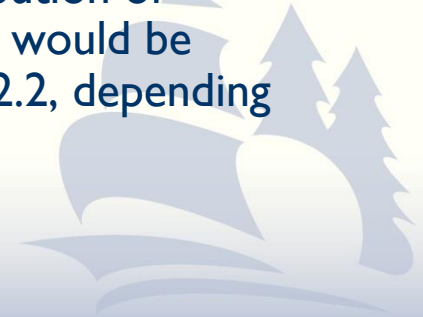


Introduction to differences between Census and Taxfiler data in respect to LIM:

- The census excludes individuals living in territories, Indian reserves and collective dwellings from the calculation of the LIM while the T1 Family File includes them
- The census calculates LIM using household income while the T1 Family File uses census family income
- The CFLIM-AT threshold could be higher than, lower than or equal to the LIM-AT

Old Method:

- Family size adjustment was based on family composition and age of family members. Family median income was established using the distribution of adjusted family income by family, not by individual. A single entry would be included and the adjustment factor would vary between 2.0 and 2.2, depending on the structure of the family.



Low Income Measure



Updated Census Family Low Income Measure methodology (2018):

- Why? To improve conceptual comparability with other Statistics Canada and international programs.
- The updated data are available for the 2004 reference year onward.

New Method:

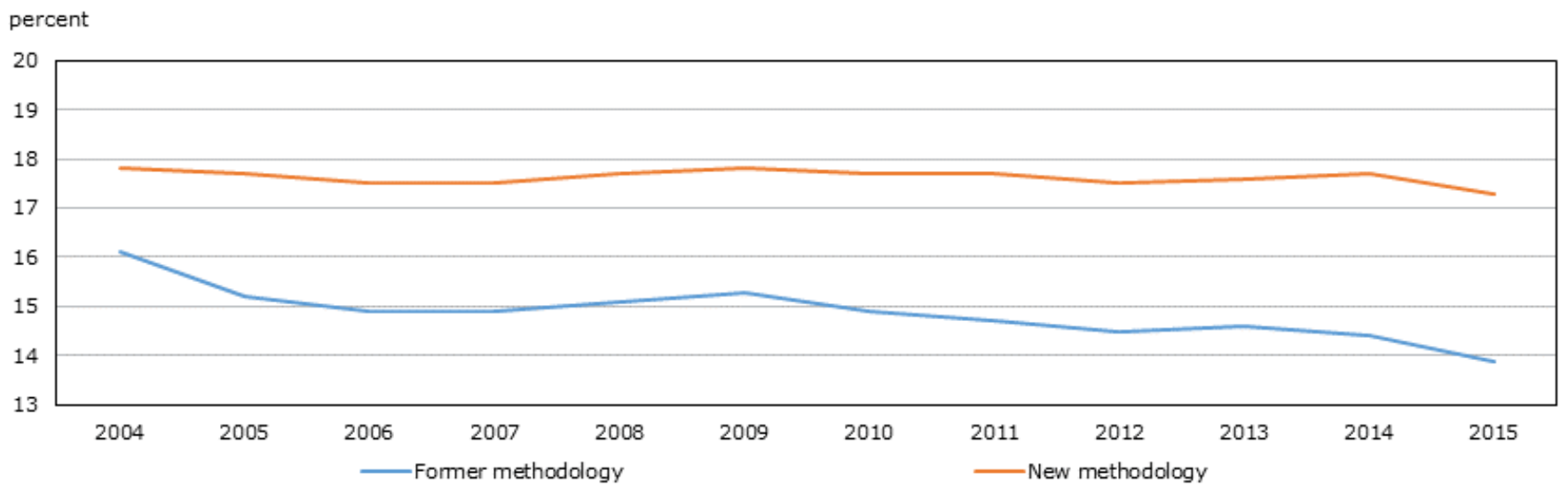
- The median is calculated using the adjusted family income assigned to each individual. For instance, the adjustment factor for a family of four with an income of \$50,000 would be 2 (that is, the square root of 4). The adjusted income would therefore be \$25,000. Consequently, four entries with an adjusted family income of \$25,000 would be included to calculate the median.
- Consequently the threshold for the CFLIM-AT is higher and the proportion of people with low income is higher



Low Income Measure



Chart 2.1
Percentage of people in situation of low income (after tax), by former and new methodologies, Canada, 2004 to 2015



Source: Statistics Canada, Income Statistics Division, Annual Income Estimates for Census Families and Individuals (T1 Family File).



Canada Child Benefit



- Effective July 1, 2016, the Universal Child Care Benefit (UCCB) and the Canada Child Tax Benefit (CCTB) were replaced by the monthly Canada Child Benefit (CCB).
- Since 2016 is a transition year (part of the year was CCTB+UCCB and the other part was CCB), the impact will be clearer with 2017 data. The main impact will be in the level of benefits received by family type and the proportion of families receiving the benefits.
- Exercise caution when comparing data from 2016 and previous years with data from 2017 and onwards.





UPDATED DATA TABLES AVAILABLE

Individuals

Families

Seniors

Financial Data and Charitable Donations



Income of Individuals



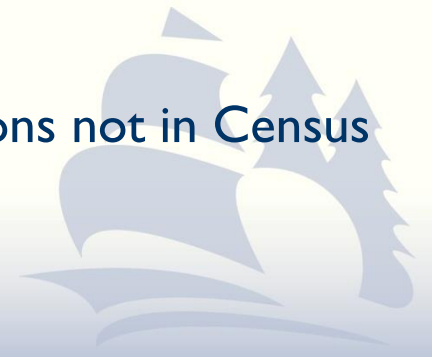
- I-1: Taxfilers and dependents, summary table, income and demographics of individuals, 2016
- I-2: Taxfilers and dependents by sex, marital status and age groups, 2016
- I-3: Taxfilers and dependents by single years of age, 2016
- I-4: Taxfilers and dependents with income by source of income, 2016
- I-5: Taxfilers and dependents with income by total income, sex and age groups, 2016
- I-6: Taxfilers and dependents with income by sex, income taxes, selected deductions and benefits, 2016
- I-7: Taxfilers and dependents with income by after-tax income, sex and age groups, 2016
- I-8: Taxfilers and dependents with income by income taxes and after-tax income, sex and age groups, 2016
- I-09: Economic dependency profile of individuals, 2016
- I-10: Labour income profile of individuals, 2016
- I-13: After-tax low income status of tax filers and dependents (census family low income measure, CFLIM-AT) for couple and lone parent families by family composition, 2016



Income of Families



- F-01: Summary census family income table, 2016
- F-02: Taxfilers and dependents by age groups and census family type, 2016
- F-03: Census families by age of older partner or parent and number of children, 2016
- F-04: Distribution of total income by census family type and age of older partner, parent or individual, 2016
- F-05: Census families by total income, family type and number of children, 2016
- F-06: Sources of income by Census family type, 2016
- F-07: Economic dependency profile of couple families, 2016
- F-08: Economic dependency profile of lone-parent families and persons not in census families, 2016
- F-09: Labour income profile of couple families, 2016
- F-10: Labour income profile of lone-parent families and persons not in Census families, 2016



Income of Families



- I-11: Taxfilers and dependents 15 years of age and over with labour income by sex and age groups, 2016
- I-12: Taxfilers and dependents 15 years of age and over receiving employment insurance by age groups and sex, 2016
- F-13: Single-earner and dual-earner Census families by number of children, 2016
- F-14: Couple families by percentage of wife's contribution to couple's employment income and by number of children, 2016
- F-15: Census families with children by age of children and children by age groups, 2016
- F-17: Before-tax low income status (based on census family low income measures, LIMs) by family type and family composition, 2016
- F-19: Census families by family type and family composition including before and after-tax median income of the family, 2016
- F-20: After-tax low income status of census families (census family low income measures, CFLIM-AT) by family type and family composition, adjusted, 2016

Income of Seniors



- S-1: Senior census families by family type and age of older partner, parent or individual, 2016
- S-2: Taxfilers and dependents in senior census families by family type, sex and age groups, 2016
- S-3: Sources of income of senior couple families by age of older partner, 2016
- S-4: Sources of income of senior lone-parent families and senior persons not in census families by age of parent or individual, 2016
- S-5: Taxfilers and dependents, seniors with income by source of income and age groups, 2016





FINANCIAL DATA AND CHARITABLE DONATIONS



Financial Data and Charitable Donations



- Canadian Savers, 2016 (Summary, Age groups, Sex, Income groups)
- RRSP Contribution Limits (Room), 2016 (Persons with room, Characteristics of persons with new room)
- Canadian Investment Income, 2016 (Summary, Age groups, Sex, Income groups)
- Charitable Donations, 2016 (Summary, Age and Sex, Income groups)
- Canadian Taxfilers, 2016 (Summary, Income groups)
- Canadian Investors, 2016 (Summary, Age groups, Sex, Income groups)
- Canadian Capital Gains, 2016





MIGRATION ESTIMATES



Migration Estimates



The first four tables provide a five-year comparison of migration while the fifth one is based on a two-year period:

- **MIG: Migration Estimates, Tables A-D, 2015-2016**
 - Table A: By Province of Origin/Destination
 - Table B: By Age Group
 - Table C: By Type of Migration and Gender
 - Table D: Flows by Census division of Origin/Destination, or by CMA/non-CMA of Origin/Destination
- **MIG: Migration Estimates, Table E, 2015-2016**
 - By Census Division/Census Metropolitan Area of Origin/Destination by Median Income of Migrant Taxfilers (year before and year of move)





UTILIZING THE DATA



Table I-3C - Individual data - Taxfilers and dependents by single year of age, 2016



Population of Individuals (Males vs Females) in Simcoe County Census Division, 2016

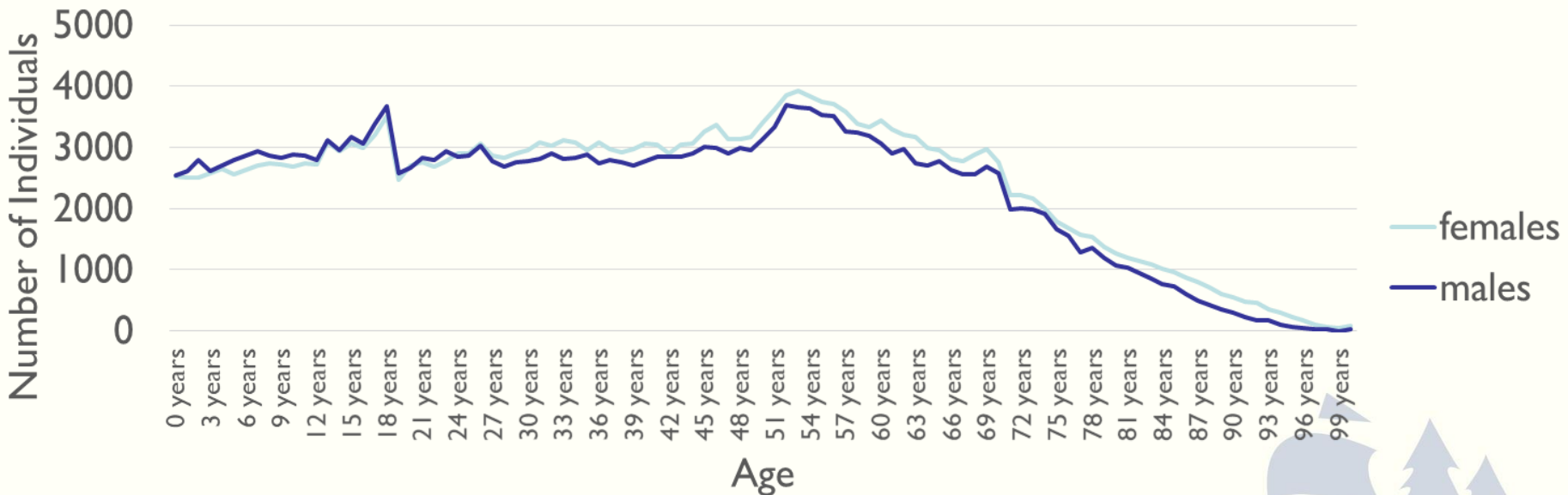
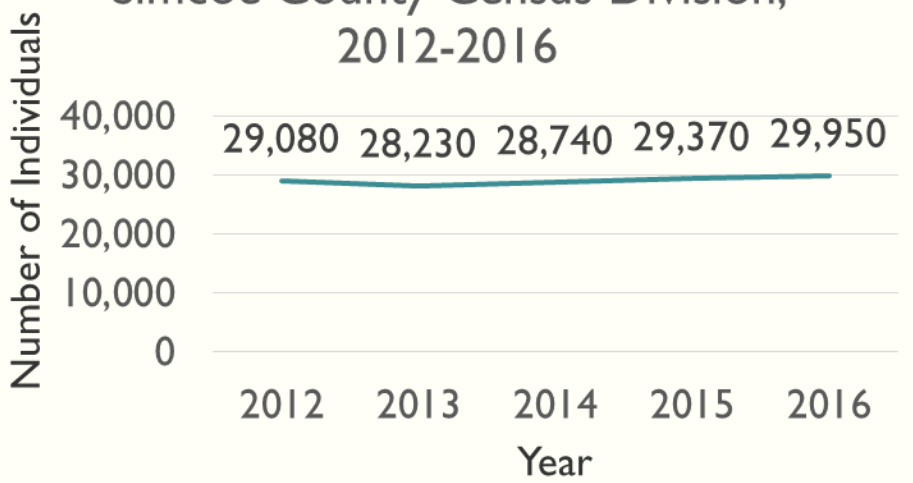


Table I-09 - Individual data - Economic dependency profile of individuals, 2012-2016



Number of Individuals Who Received Employment Insurance in Simcoe County Census Division, 2012-2016



Total Amount of Employment Insurance Received by All Recipients in Simcoe County Census Division, 2012-2016

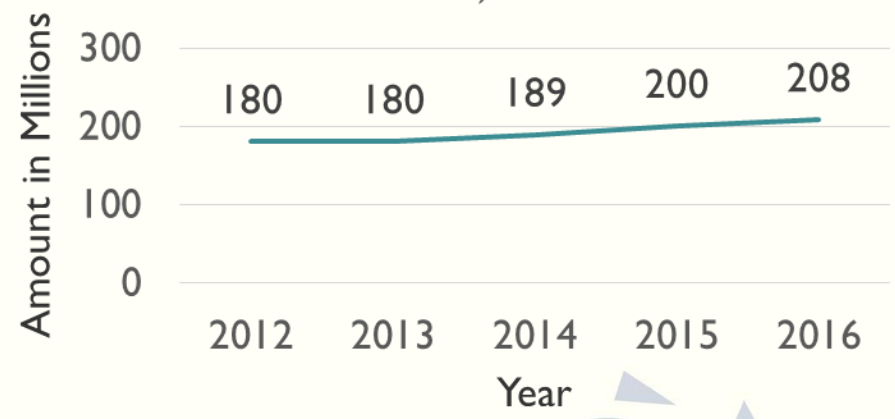


Table I-09 - Individual data - Economic dependency profile of individuals, 2012-2016



Average Amount of Employment Insurance (EI) Received Recipients Annually in Simcoe County Census Division, 2012-2016

Year	Average EI Per Recipient (\$)	Minimum Wage Salary* (\$)	Minimum Wage Hourly Rate (\$)
2012	6,180	18,655	10.25
2013	6,360	18,655	10.25
2014	6,590	20,020	11.00
2015	6,810	20,475	11.25
2016	6,940	20,748	11.40

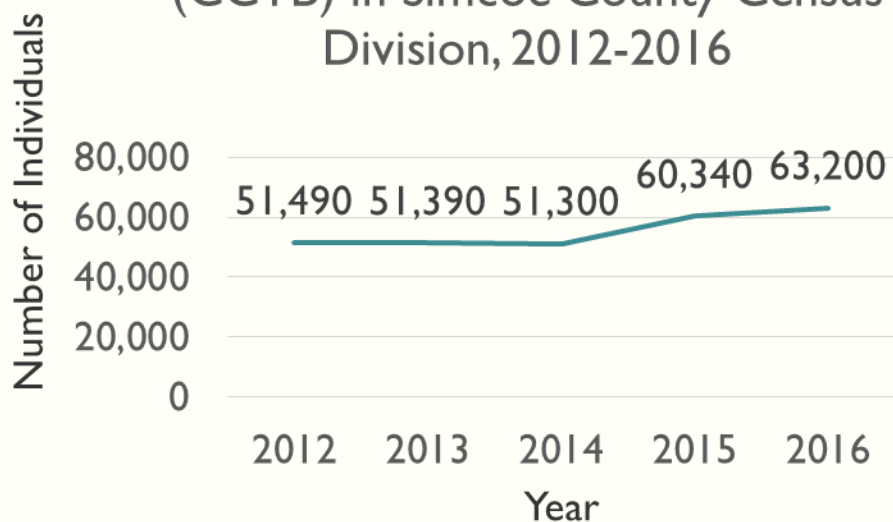
* The minimum wage salaries were calculated using an online salary calculator with the assumption of a 35 hour work week and an individuals working 52 weeks in a year.



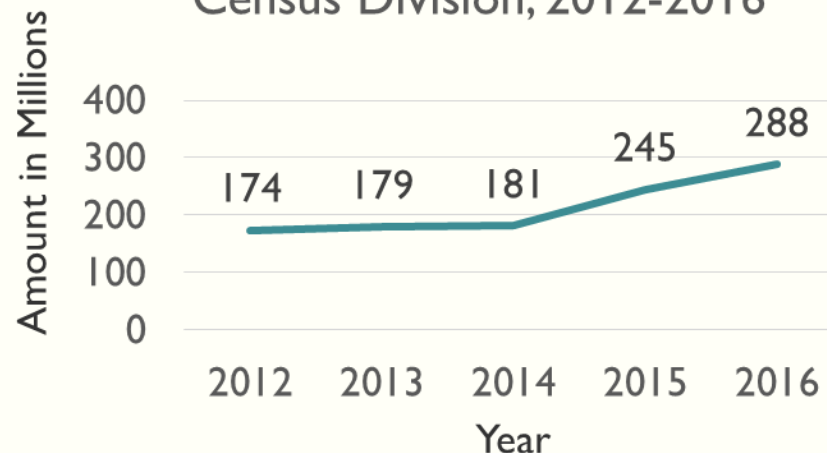
Table I-09 - Individual data - Economic dependency profile of individuals, 2012-2016



Number of Individuals who Received Canada Child Tax Benefit (CCTB) in Simcoe County Census Division, 2012-2016



Total Amount of Canada Child Tax Benefit (CCTB) Received by All Recipients in Simcoe County Census Division, 2012-2016



Note: Effective July 1, 2016, the Universal Child Care Benefit (UCCB) and the Canada Child Tax Benefit (CCTB) were replaced by the monthly Canada Child Benefit (CCB). Therefore some of the money in 2016 that would have been counted as CCTB was counted as CCB due to the change.



Table I-09 - Individual data - Economic dependency profile of individuals, 2012-2016

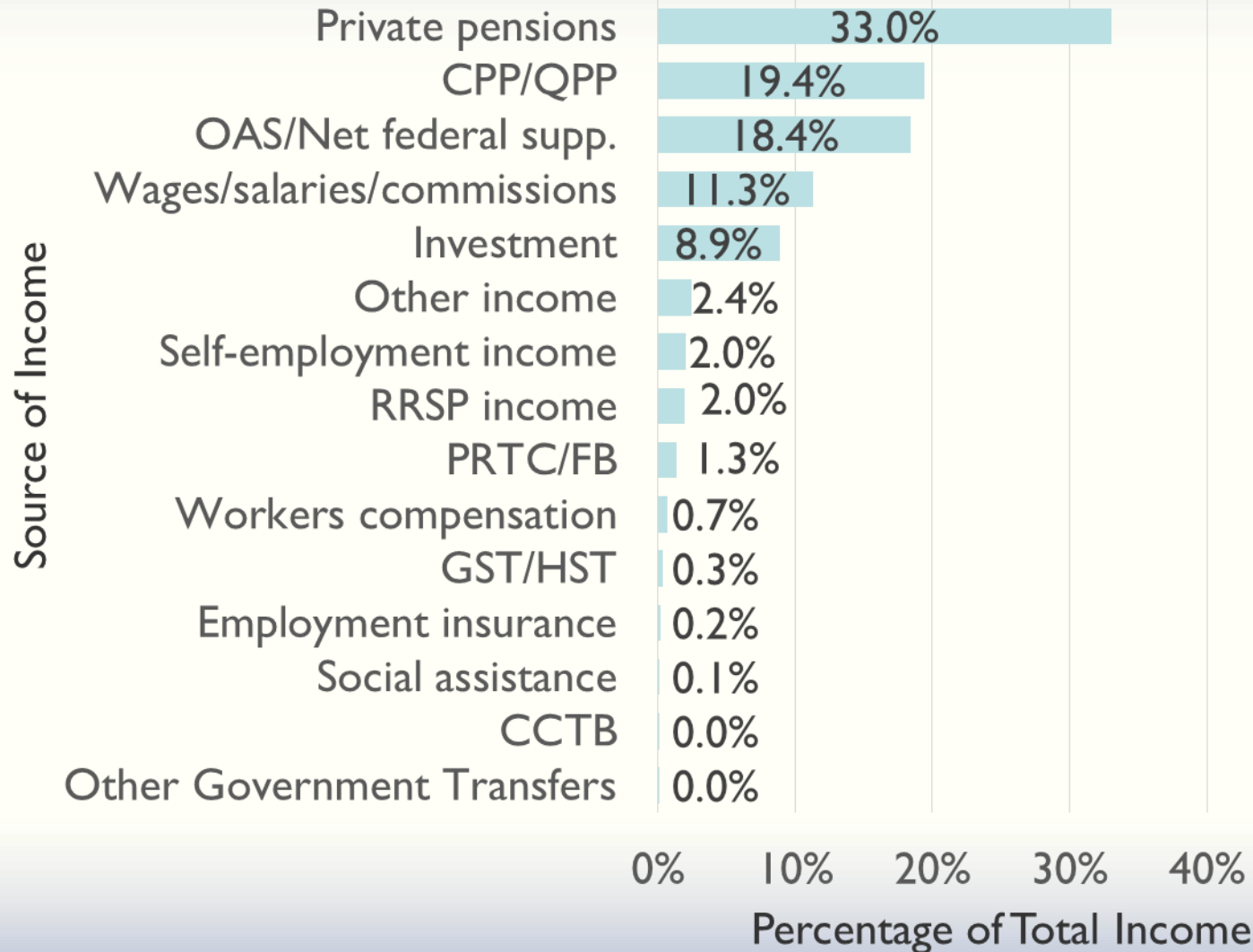


Average amount of Canada Child Tax Benefit (CCTB) Received by Recipients Annually in Simcoe County Census Division, 2012-2016

Year	Average CCTB Per Recipient(\$)
2012	3,390
2013	3,480
2014	3,530
2015	4,060
2016	4,550



Percentage of Total Income by Source of Income for Seniors in Simcoe County Census Division, 2016



**Table-05
Seniors data
- Taxfilers
and
dependents,
seniors with
income by
source of
income and
age
groups,
2016**



Technical Reference Guide for the Annual Income Estimates for Census Families, Individuals and Seniors (Stats Can)

- <https://www150.statcan.gc.ca/n1/pub/72-212-x/72-212-x2017001-eng.htm>

Using/Understanding Taxfiler Data (CDP)

- <https://communitydata.ca/content/product-profile-22-taxfiler-data-2010>



Discussion



- Has anyone used Taxfiler data before, if so, what tables did you use?
- What data tables would you be interested in using?



New Business

2018 Annual Meeting Update



- Annual meeting held on May 23-25, 2018 in Guelph, Ontario.
- Feel free to download the 2018 Annual Meeting Report, agenda, presentations and data workshops from the CDP website:
 - <http://communitydata.ca/content/cdp-annual-meeting-2018>



New Business

Share what we've done



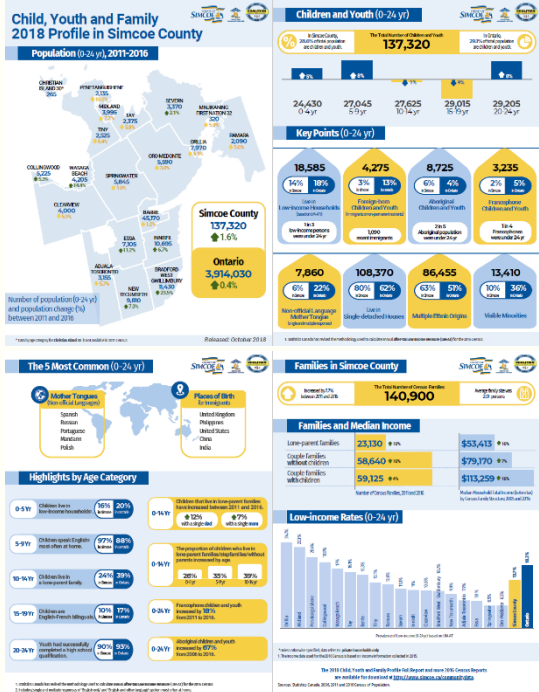
Child, Youth and Family Profile

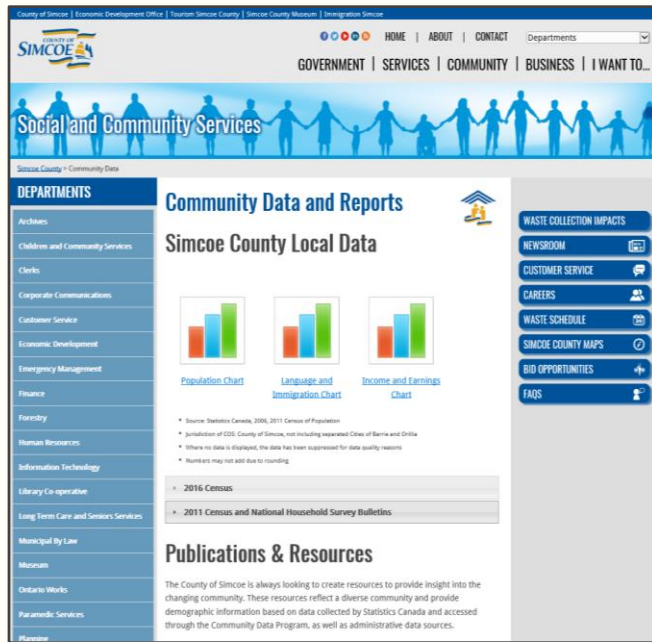
Thematic maps:

- Population Changes for Children and Youth, 2011-2016;
- Proportion of Aboriginal Children and Youth, 2006-2016;
- Proportion of Immigrant Children and Youth, 2006-2016;
- Prevalence of Low Income (LIM-AT) for Children and Youth, 2015.

Infographic:

- Child, Youth and Family Profile - Infographic





■ Target Population Profiles:

- Immigrants and Recent Immigrants Profile
- Children 0-6 Years Old Profile
- Children 7-12 Years Old Profile

simcoe.ca/communitydata



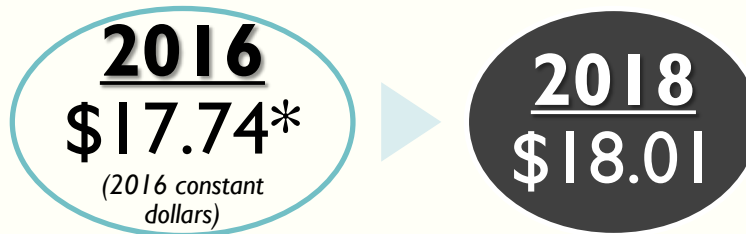


Local Updates: 2018 Living Wage Rate



Updated Methodology in Ontario

- **35-hour** work week
- Weighted average for rural/urban transportation
 - Urban: 1 vehicle + 1 public transit pass
 - Rural: 2 vehicles
- Data sourced at provincial level
 - Cost of clothing and footwear
 - Cost of car ownership
 - Other expense
- Hydro



Living Wage by Region		
Community	Living Wage	Date Last Calculated
London	\$15.53	May-2016
Muskoka	\$15.84	Nov-2016
Hamilton	\$15.85	Nov-2016
Thunder Bay	\$16.05	Nov-2018
Waterloo Region	\$16.15	Nov-2018
Sudbury	\$16.18	Oct-2015
Chatham-Kent	\$16.33	Nov-2018
St. Thomas Elgin	\$16.57	Nov-2018
Guelph	\$16.90	Nov-2018
Durham Region	\$17.00	N/A
Leeds, Grenville, Lanark Counties	\$17.07	Nov-2018
Kingston	\$17.29	Nov-2018
Perth and Huron	\$17.44	Nov-2018
Peterborough	\$17.65	May-2018
Halton	\$17.95	Apr-2017
Norththumberland County	\$17.95	Nov-2018
Niagara Region	\$17.99	Nov-2018
Simcoe County	\$18.01	Nov-2018
Ottawa	\$18.21	Nov-2018
Kawartha Lakes	\$18.42	Nov-2018
Haliburton	\$19.42	Nov-2018
Toronto	\$21.75	Nov-2018





Next meeting

Winter 2019– Date TBD





For more information contact:

Michelle Henderson, Program Supervisor, at michelle.henderson@simcoe.ca

Victoria Chapman, Research Analyst, at victoria.chapman@simcoe.ca

