

Intergovernmental Action Plan for Simcoe, Barrie and Orillia

Appendix X - Graphical Representation of Wastewater Treatment Capacity Gap Analysis

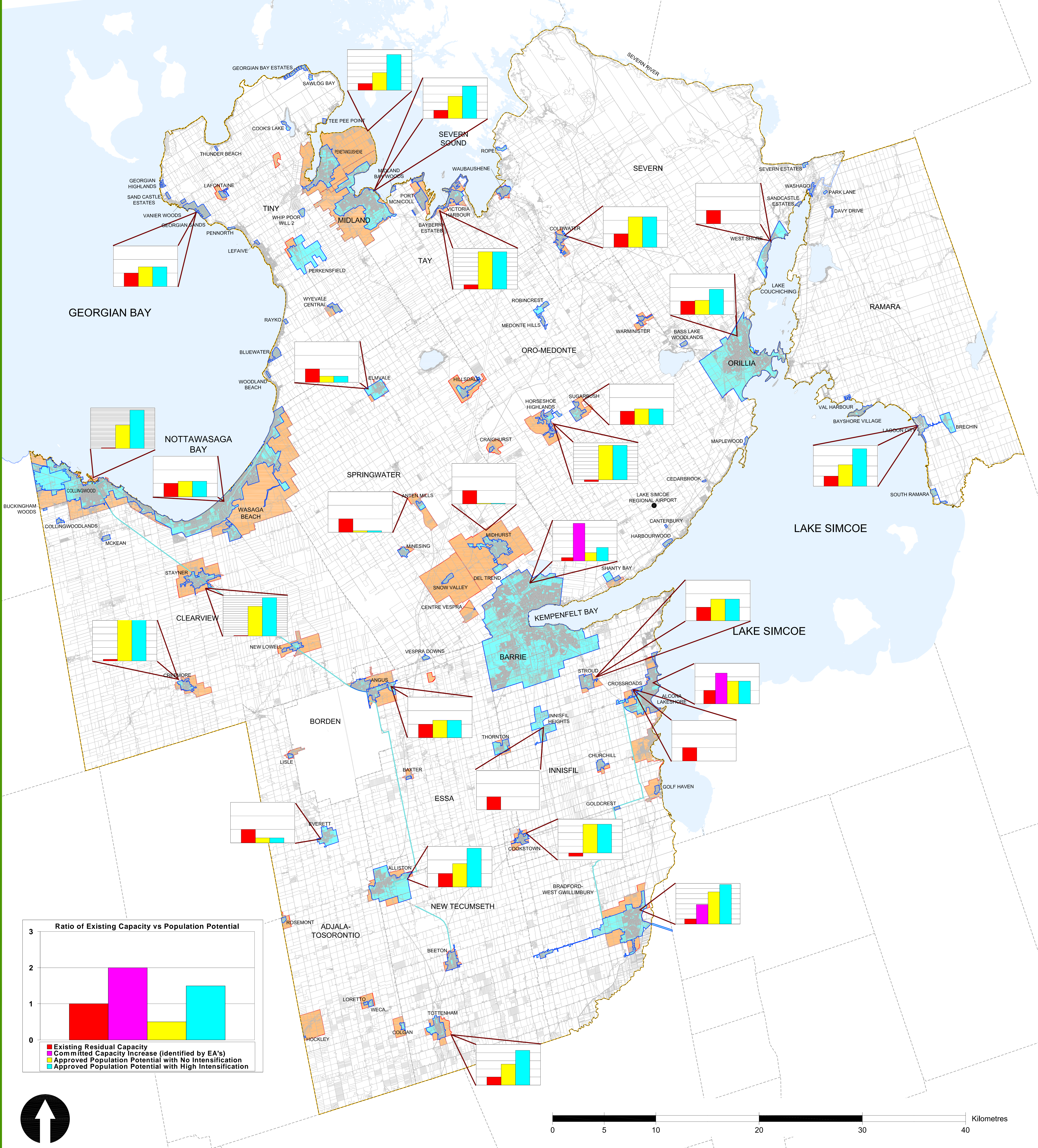


Projection: UTM zone 17N NAD83
 Data Sources: 1. Ontario Ministry of Natural Resources,
 2. Ontario Ministry of Municipal Affairs and Housing,
 3. Simcoe County 4. Infrastructure Area Boundaries,
 provided by Municipalities 5. Local Municipal Official Plans

Created by: JDC
 Checked by: JAM



Dillon Consulting
Clara Consulting
Bourrie & Associates



Intergovernmental Action Plan for Simcoe, Barrie and Orillia

Appendix Y - Graphical Representation of Water Supply Capacity Gap Analysis (Major Systems Only)

LEGEND

- IGAP Study Boundary²
- Area Municipalities²
- Ponds and Lakes¹
- Transmission Mains
- Water Service Area Boundary⁴
- Settlement Boundary⁵
(Not all settlement areas have municipal water servicing)



**Dillon Consulting
Clara Consulting
Bourrie & Associates**



Projection: UTM zone 17N NAD83
Data Sources: 1. Ontario Ministry of Natural Resources,
2. Ontario Ministry of Municipal Affairs and Housing,
3. Simcoe County 4. Infrastructure Area Boundaries
provided by Municipalities 5. Local Municipal Official Plans

Created by: JDC
Checked by: JAM