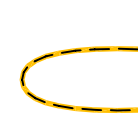

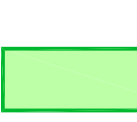



Intergovernmental Action Plan for Simcoe, Barrie and Orillia

Appendix D - Existing Wastewater Serviced Areas

LEGEND

-  IGAP Study Boundary²
-  Area Municipalities²
-  Ponds and Lakes¹
-  Wastewater Treatment Plant
-  Wastewater Service Area Boundary⁴
-  Settlement Boundary⁵
(Not all settlement areas have municipal wastewater servicing)

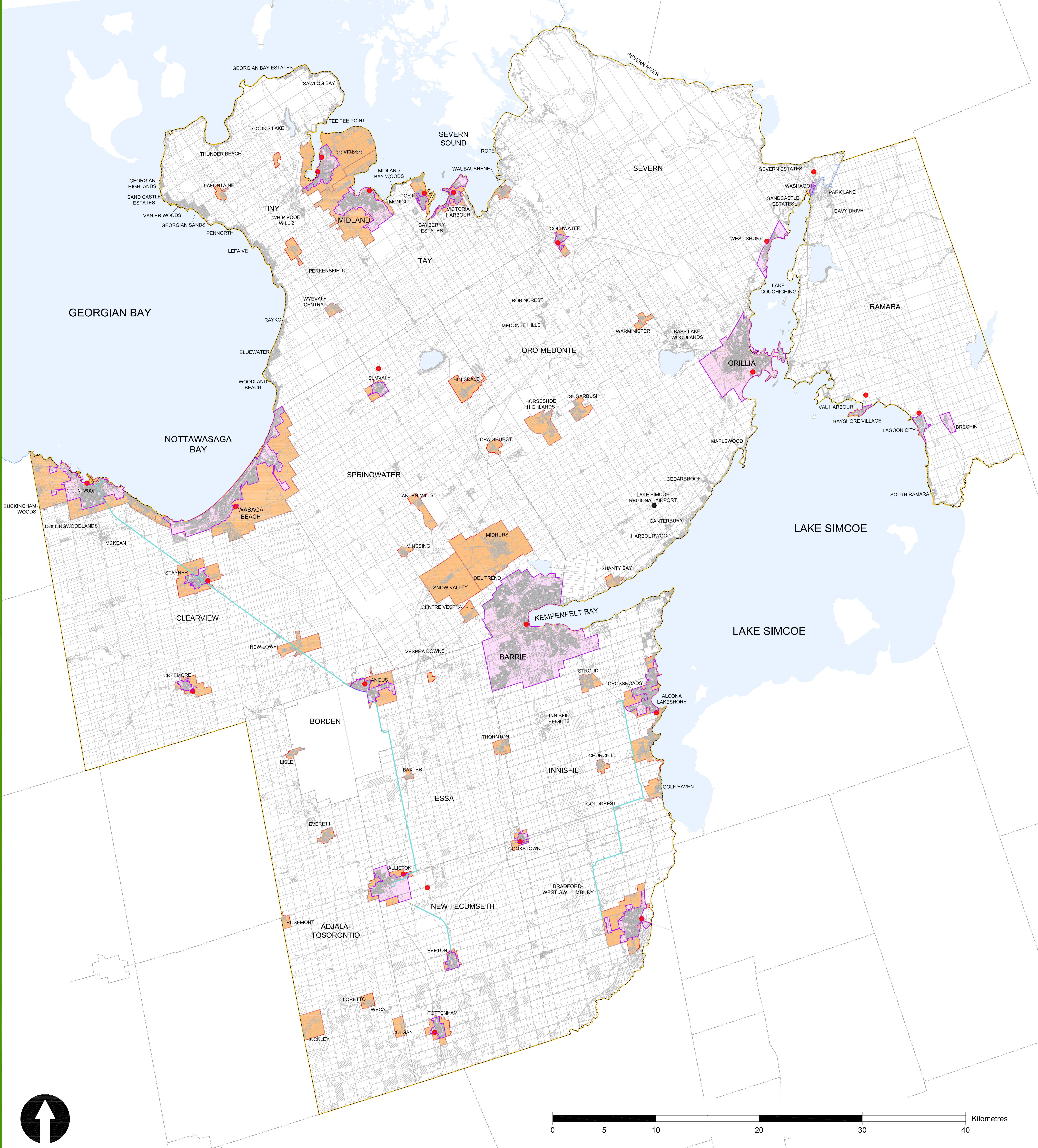


**Dillon Consulting
Clara Consulting
Bourrie & Associates**



Projection: UTM zone 17N NAD83
Data Sources: 1. Ontario Ministry of Natural Resources,
2. Ontario Ministry of Municipal Affairs and Housing,
3. Simcoe County 4. Infrastructure Area Boundaries
provided by Municipalities 5. Local Municipal Official Plans

Created by: JDC
Checked by: JAM



Intergovernmental Action Plan for Simcoe, Barrie and Orillia

Appendix E - Existing Fully Serviced Areas

LEGEND

- IGAP Study Boundary²
- Area Municipalities²
- Ponds and Lakes¹
- Transmission Mains
- Wastewater Treatment Plant
- Fully Serviced Area Boundary⁴
- Settlement Boundary⁵
(Not all settlement areas have municipal servicing)

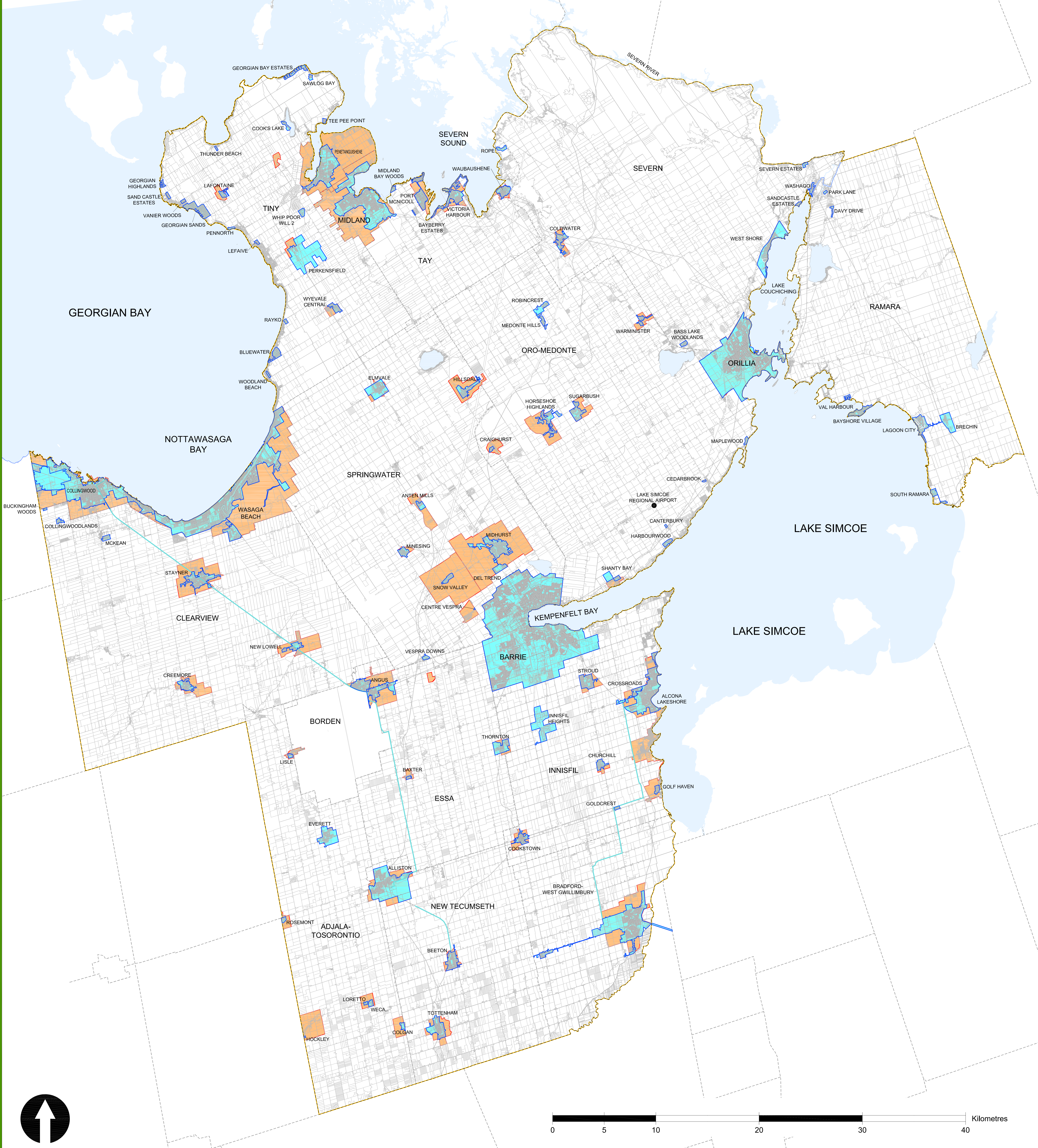


Projection: UTM zone 17N NAD83
 Data Sources: 1. Ontario Ministry of Natural Resources,
 2. Ontario Ministry of Municipal Affairs and Housing,
 3. Simcoe County 4. Infrastructure Area Boundaries,
 provided by Municipalities 5. Local Municipal Official Plans

Created by: JDC
 Checked by: JAM





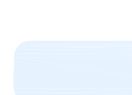

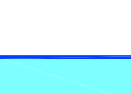

Dillon Consulting
Clara Consulting
Bourrie & Associates



Intergovernmental Action Plan for Simcoe, Barrie and Orillia

Appendix F - Existing Water Serviced Boundaries

LEGEND

-  IGAP Study Boundary²
-  Area Municipalities²
-  Ponds and Lakes¹
-  Transmission Mains
-  Water Service Area Boundary⁴
-  Settlement Boundary⁵
(Not all settlement areas have municipal water servicing)



Projection: UTM zone 17N NAD83
 Data Sources: 1. Ontario Ministry of Natural Resources,
 2. Ontario Ministry of Municipal Affairs and Housing,
 3. Simcoe County 4. Infrastructure Area Boundaries,
 provided by Municipalities 5. Local Municipal Official Plans

Created by: JDC
 Checked by: JAM



Dillon Consulting
Clara Consulting
Bourrie & Associates