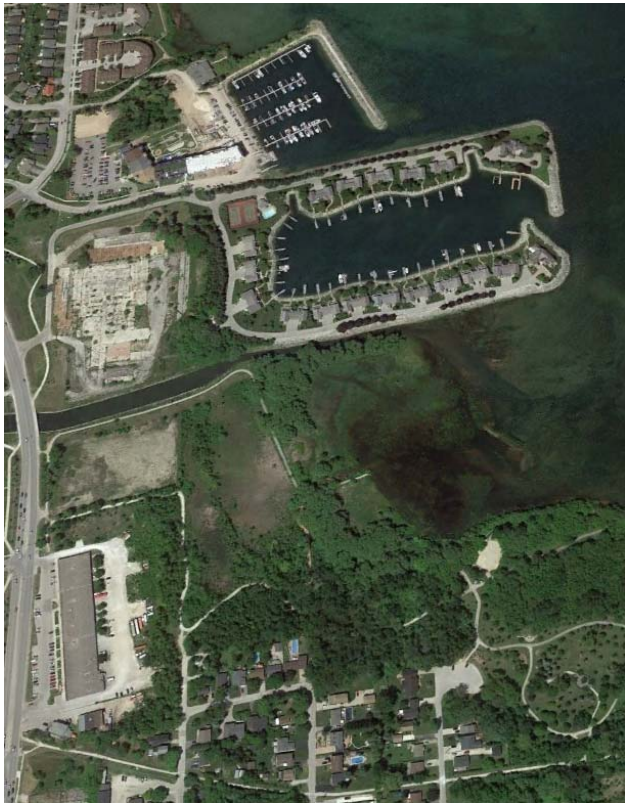




COUNTY OF SIMCOE

MUNICIPAL COMPREHENSIVE REVIEW

Special Meeting of County Council



COUNTY OF SIMCOE
Tuesday, June 8, 2021



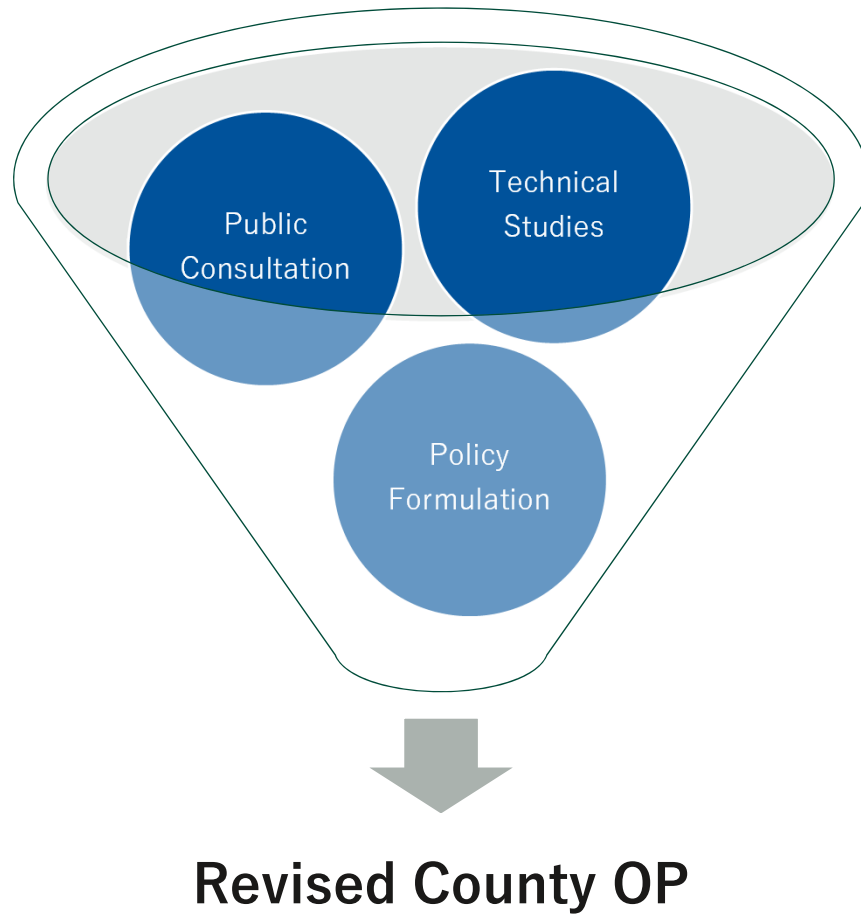
Today we will discuss...

- Purpose and effect of s.26 Special Meeting of Council
- What is a Municipal Comprehensive Review?
- Provincial Policy Framework
- Technical Studies
- Engagement Strategy
- Work Program
- Next Steps

What is a Municipal Comprehensive Review (MCR)?

- Official plans (OPs) must be brought into conformity with Provincial plans within specific timeframes
 - Current requirement for upper-tiers is July 2022
- Many Growth Plan policies can be implemented through Official Plan Amendments (OPAs) at any time
- Some policies require implementation through an MCR
 - New OP or OPA initiated by upper or single tier under s.26 of *Planning Act* that comprehensively applies Growth Plan policies and schedules

Main Features of an MCR

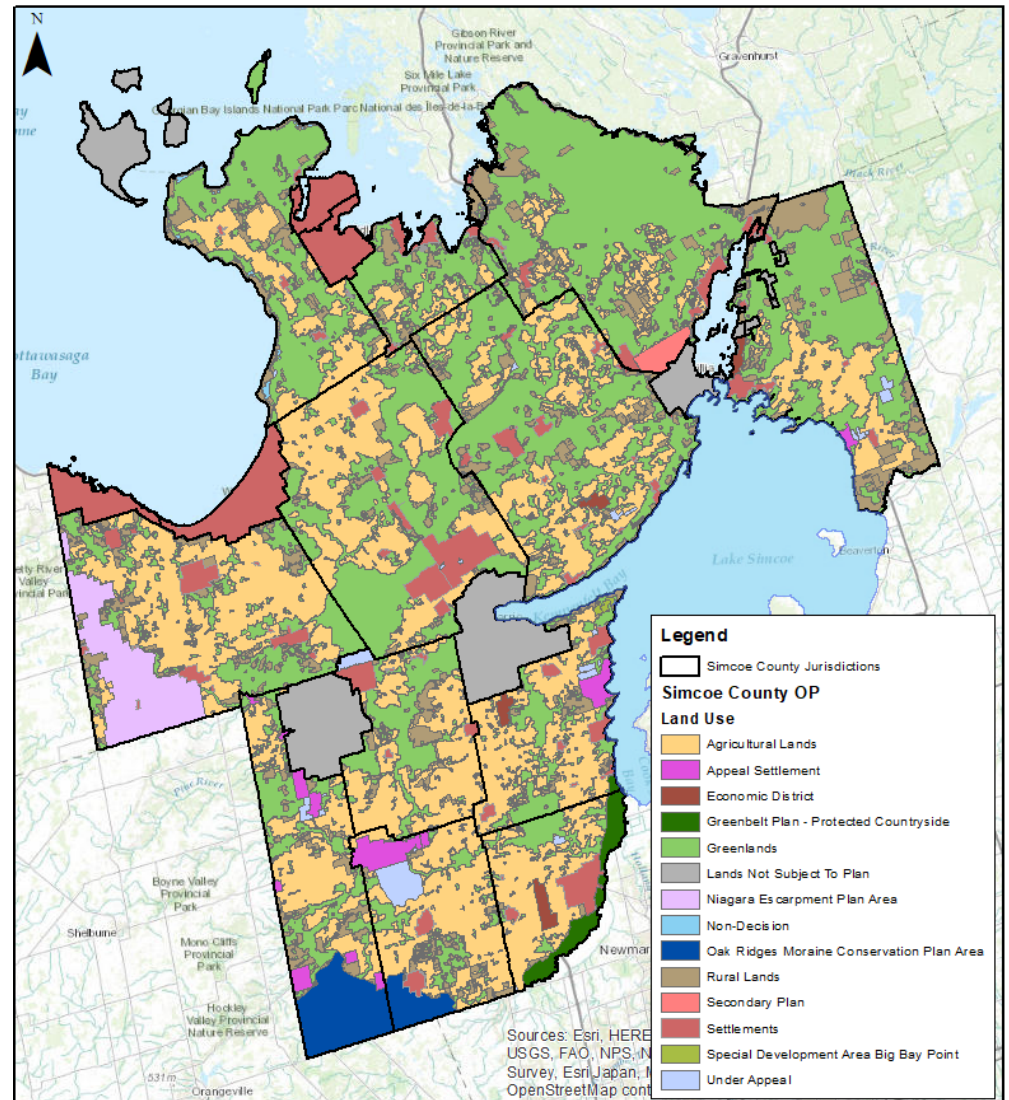


Key Requirements:

- Submit to Province
- Conformity after approval
- Approval non-appealable

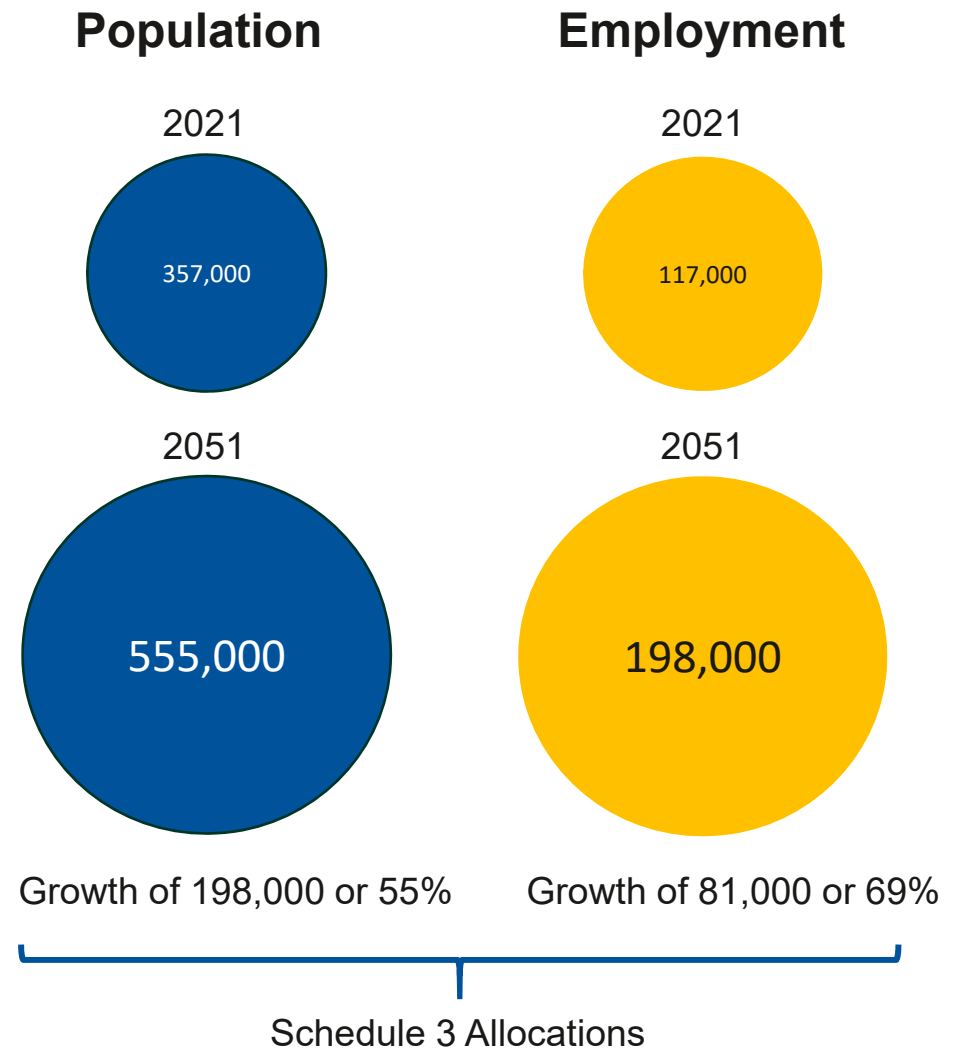
Key Growth Plan Policies — Protecting What is Valuable

- Implement Provincial Natural Heritage System (NHS)
- Watershed planning informs protection of watershed resource systems and planning decisions
- Protect Provincial Agricultural System
- Climate change mitigation and adaptation



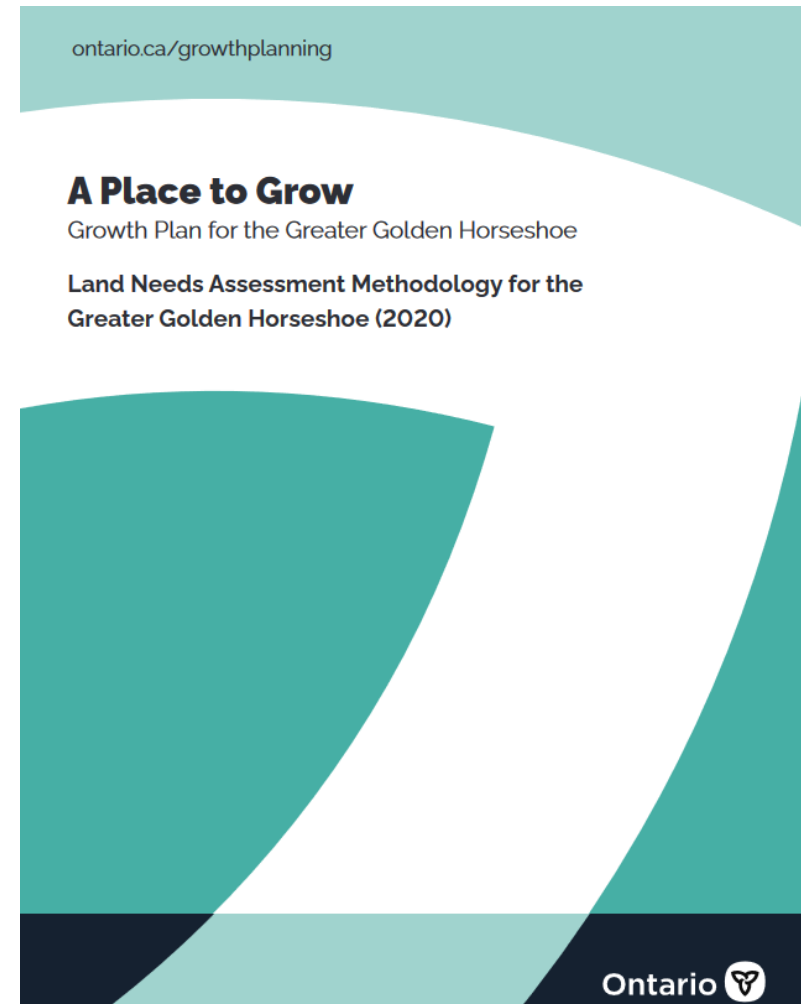
Key Growth Plan Policies — Schedule 3

- Growth forecasts extended to 2051
- Forecasts are minimums but are deemed appropriate for Simcoe County
- Schedule 7 — growth allocations for Simcoe lower-tier municipalities to 2031 no longer in effect



Key Growth Plan Policies — LNA

- Provincial LNA Methodology released in August 2020
- County must allocate growth to lower-tiers
- Two types of land
 - Community area
 - Employment area
- New methodology for assessing land needs
 - Housing by type
 - Market contingency factors
 - Consider “market demand”



Key Growth Plan Policies — Section 6

- Growth management policies for Simcoe Sub-Area
- Direct significant portion of growth to
 - primary settlement areas
 - key employment areas

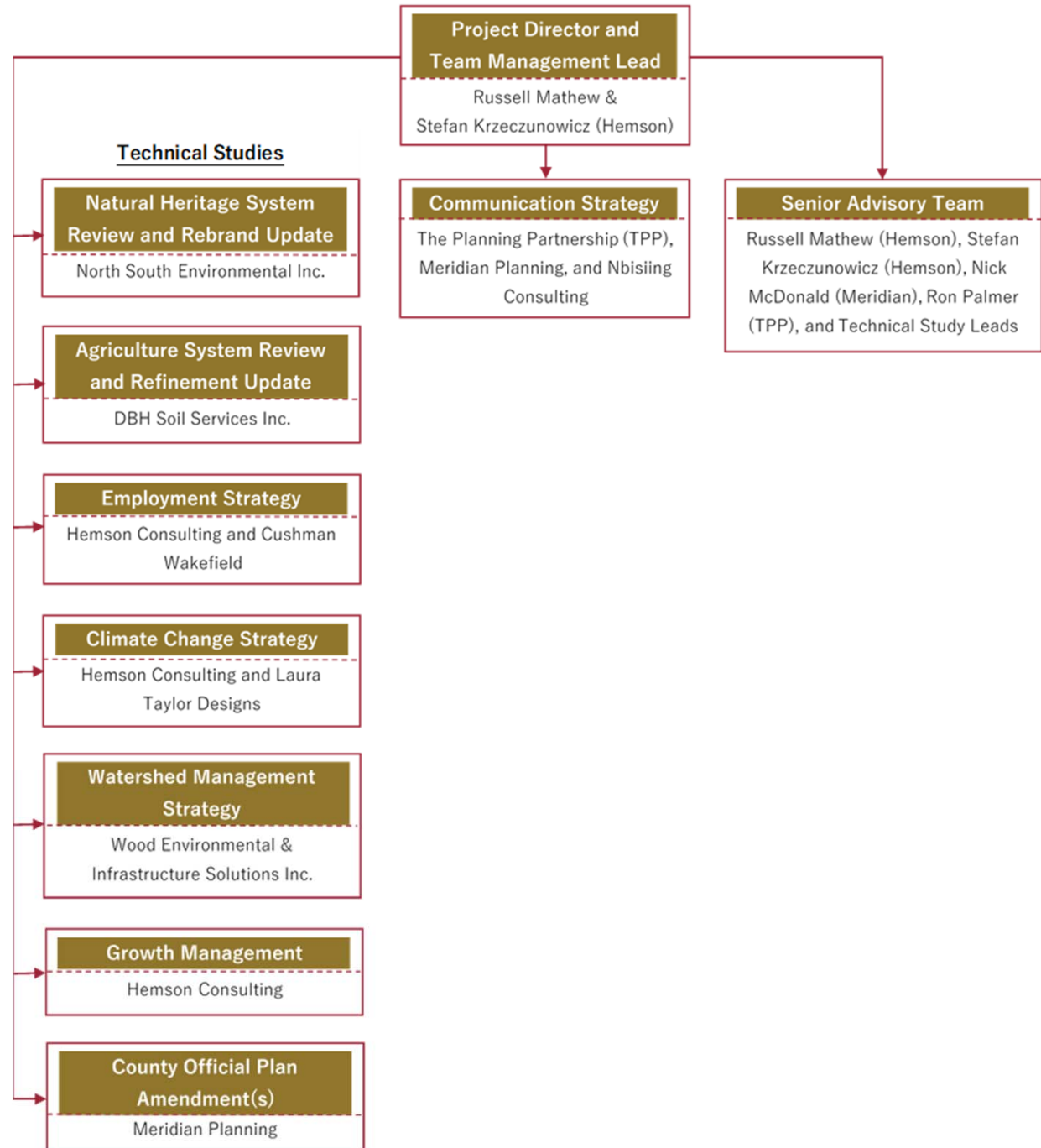
Growth Plan – Schedule 8



Key Growth Plan Policies — Settlement Area Boundary Expansion

- Important process to determine appropriate location(s) for additional urban lands
- Evidence-based review through technical studies
- Close co-ordination with lower-tiers
- Work done at County scale
 - Sets stage for local plans and master servicing studies
 - Not intended to assess individual development proposals

Consulting Team Roles & Responsibilities

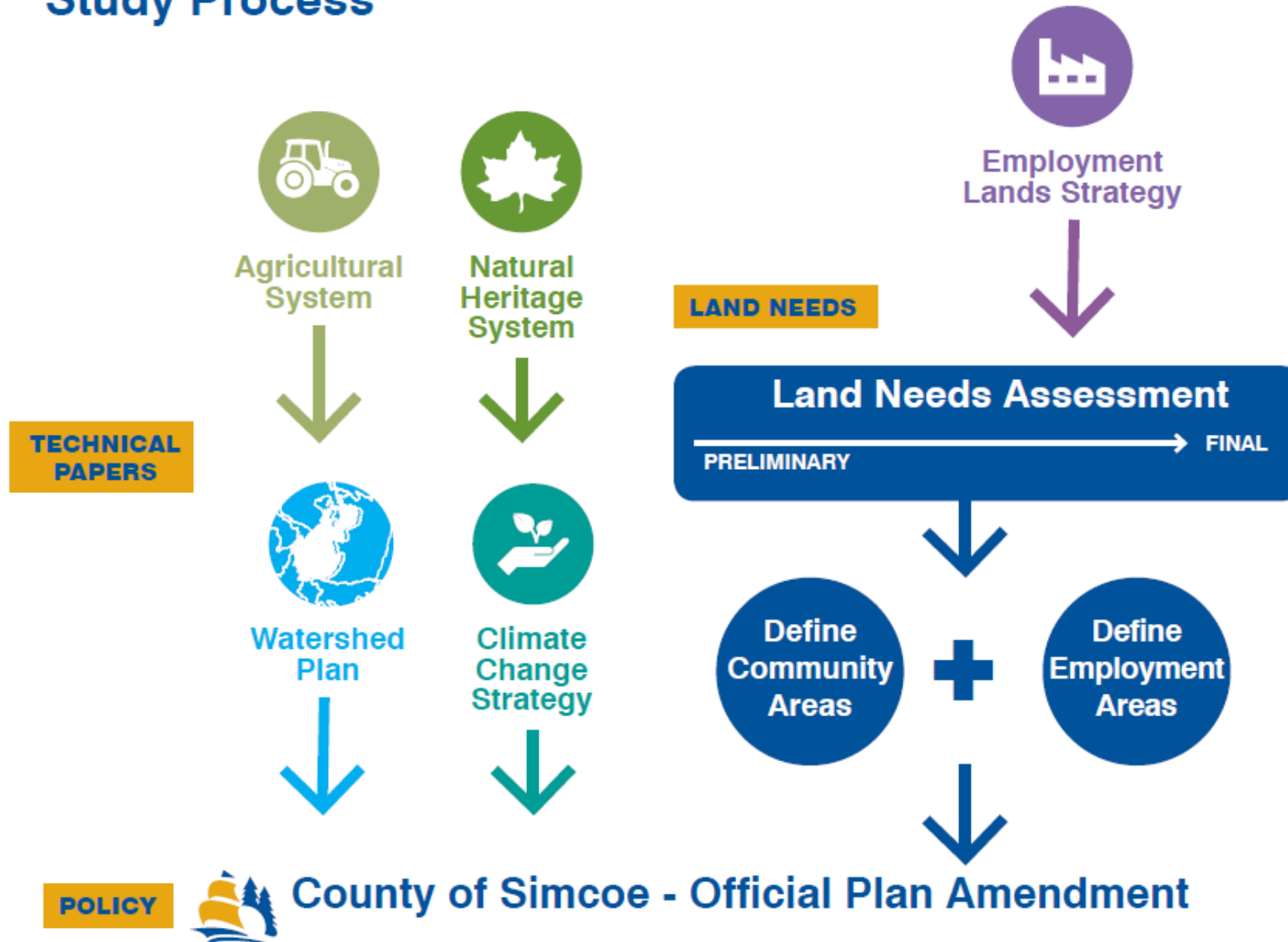




COUNTY OF SIMCOE

MUNICIPAL COMPREHENSIVE REVIEW

Study Process



MCR is a Collaborative Exercise with Lower-Tiers

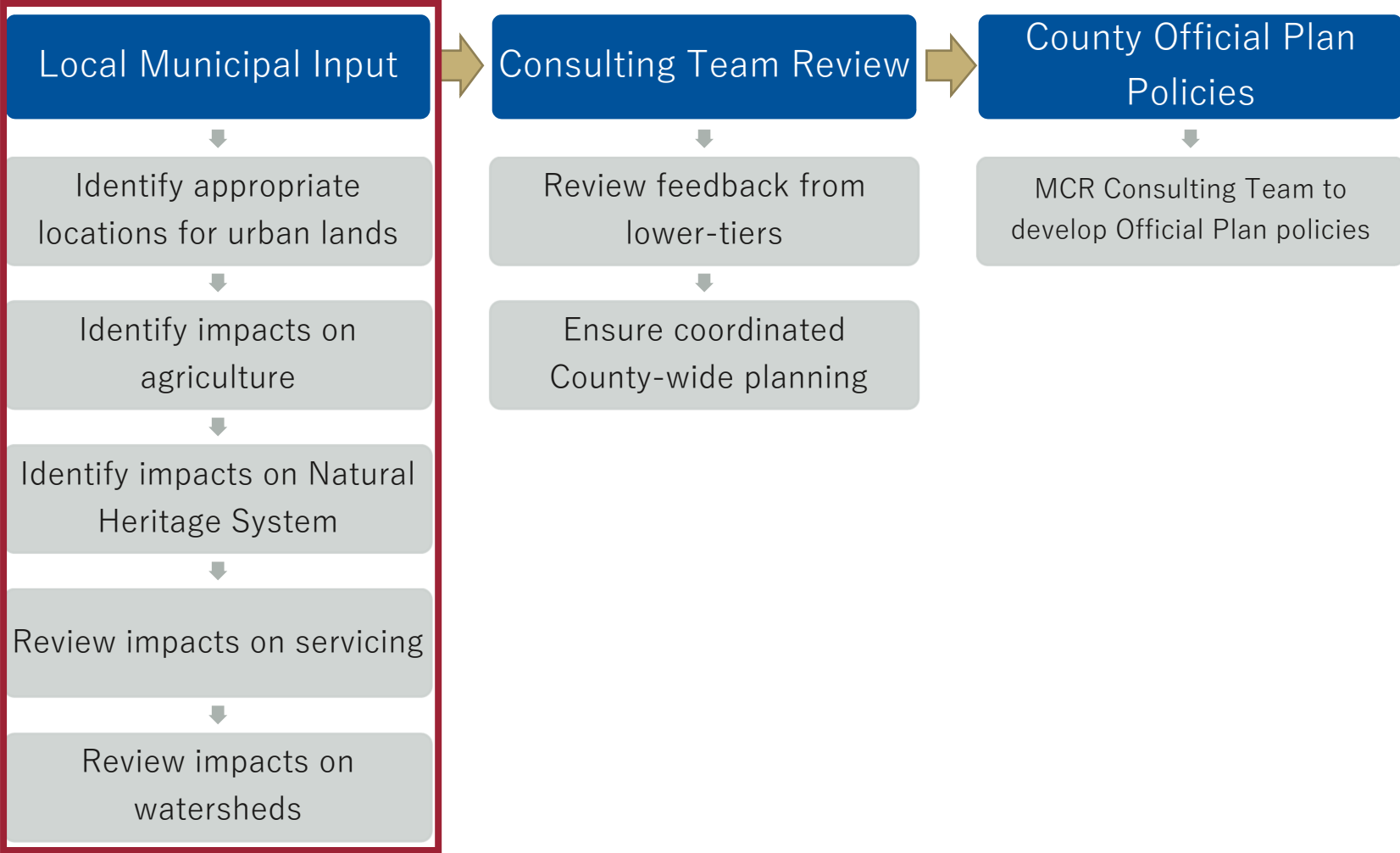
Simcoe Lower-Tiers



Role of lower-tiers:

- **Advise** consulting team of background information and technical analysis
- **Provide** local data and mapping
- **Comment** on draft analysis and technical studies
- **Prepare** justification for location of urban expansions
- **Participate** in meetings and workshops to provide timely input

Local Municipal Input Needed to Determine Location of Future Urban Lands



Engagement Plan – Goals

- Build awareness and understanding—MCR mainly a technical conformity exercise
- Effectively engage full range of stakeholders
- Foster relationships to generate broad-based support
- Encourage participation and input
- Demonstrate transparency

Phase 1: Data & Gathering Analysis

Timeline: January-June 2021

Key Tasks:

- Kick-off meeting with local municipalities
- Initiation of technical studies

Phase 2: Draft Reports, Draft Technical Recommendations, Land Need Assessment

Timeline: July-October 2021

Key Tasks:

- Preliminary mapping
- Draft technical recommendations
- Draft and final lands needs assessment

Phase 3: Prepare Technical Reports, Final Mapping & Final Technical Recommendations, Official Plan

Timeline: November 2021 - July 2022

Key Tasks:

- Final technical recommendations
- Draft Official Plan
- Final Official Plan

Engagement Plan – Stakeholders

- County Council
- Municipal staff
(County/lower-tier)
- Indigenous communities
- Provincial staff
- Public agencies
 - Conservation Authorities/SSEA
 - School Boards
- Residents (seasonal & permanent)
- Environmental groups
- Agricultural community
- Major landowners/developers
- Community/business groups and associations

Engagement Plan – Tools and Tactics

- Dedicated MCR webpage (<https://Simcoe.ca/mcr>)
- Online meetings
- Face-to-face depending on direction from Public Health
- Posts on social media to encourage engagement and feedback
- Project updates in County's regular communications tools
- Updates shared in local media briefs
- Email blasts to study's list of interested parties and circulated through network of social media contacts

Next Steps

- Data gathering and review (near completion)
- Technical studies (underway)
- Circulate material to lower-tiers for review/comment (Q2/Q3 2021)
- Further opportunities for public review and input into the MCR and updated County Official Plan through postings to the MCR webpage, a future Open House and Statutory Public Meeting(s) under s.17 of the *Planning Act*
- Provide draft technical studies, growth allocations, and official plan amendments to Council for consideration (Q3 2021 and Q1 2022)