



October 13, 2016

SUPPLEMENTARY DOCUMENTS

STAGE 2 ARCHAEOLOGICAL ASSESSMENT

Burls Creek Event Grounds, Part of Lot 23, Concession 9, Geographic Township of Oro, County of Simcoe, Ontario

Submitted to:

Ryan Howes
Burls Creek Event Grounds Inc.
366 Bay Street, Suite 1100
Toronto, ON
M5H 4B2

License: Jamie Lemon, Golder Associates Ltd.

License Number: P1056

PIF: P1056-0068-2016

Report Number: 1534044-5000-R02

Distribution:

Burls Creek Event Grounds Inc - 1 hard copy
County of Simcoe - 14 hard Copies
Township of Oro-Medonte - 6 hard copies
IPS - 1 hard copy
Black, Sutherland LLP - 1 hard copy
MTCS - 1 PDF
Golder Associates Ltd. - 1 Hard Copy





Table of Contents

1.0 SUPPLEMENT A – HUNTER 1903 MAP FRAGMENT1

2.0 SUPPLEMENT B – MAPPING OF HUNTER’S SITES PROVIDED BY THE HURON-WENDAT NATION.....3

FIGURES

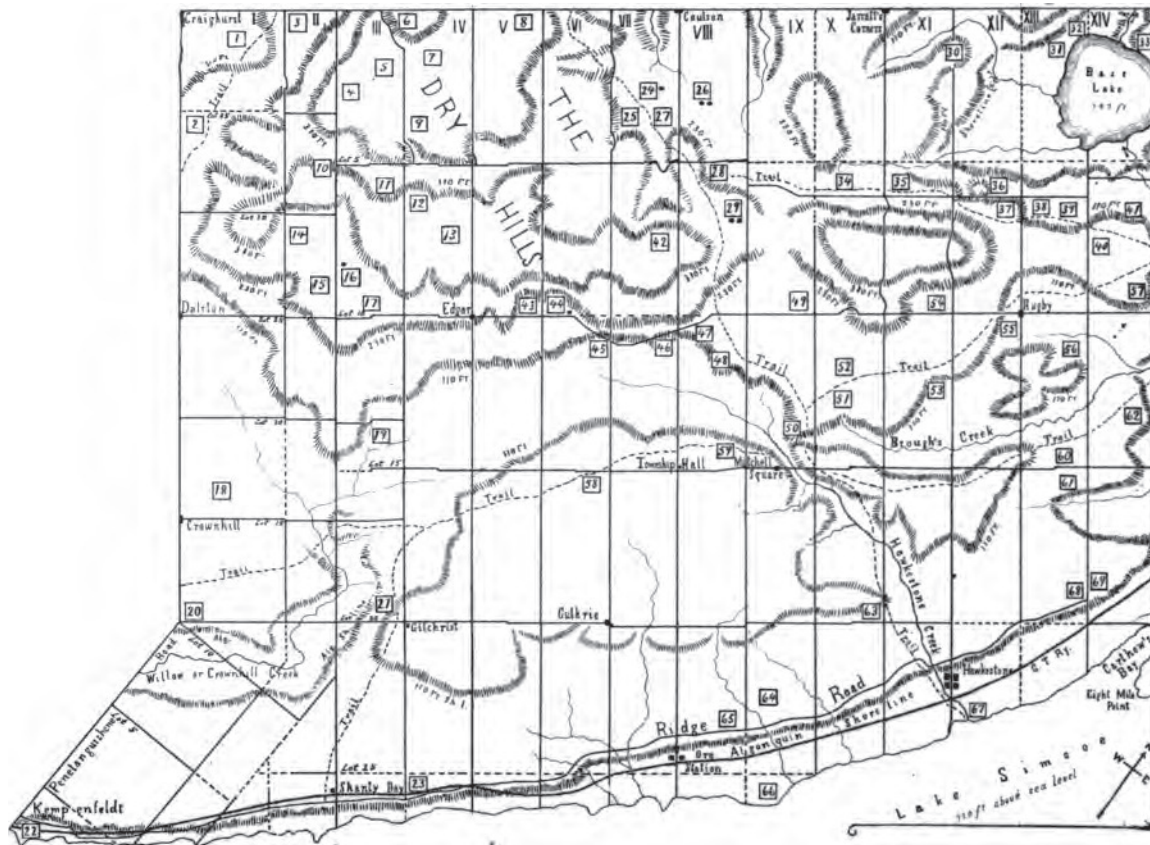
Supplement A: A Portion of Andrew Hunter's 1903 Map of Huron Sites in Simcoe County2

Supplement B: Mapping provided by the Huron-Wendat Nation4



1.0 SUPPLEMENT A – HUNTER 1903 MAP FRAGMENT

Supplement A, a portion of Andrew Hunter's 1903 map of Huron sites in Simcoe County, follows on the succeeding page.



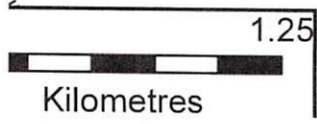
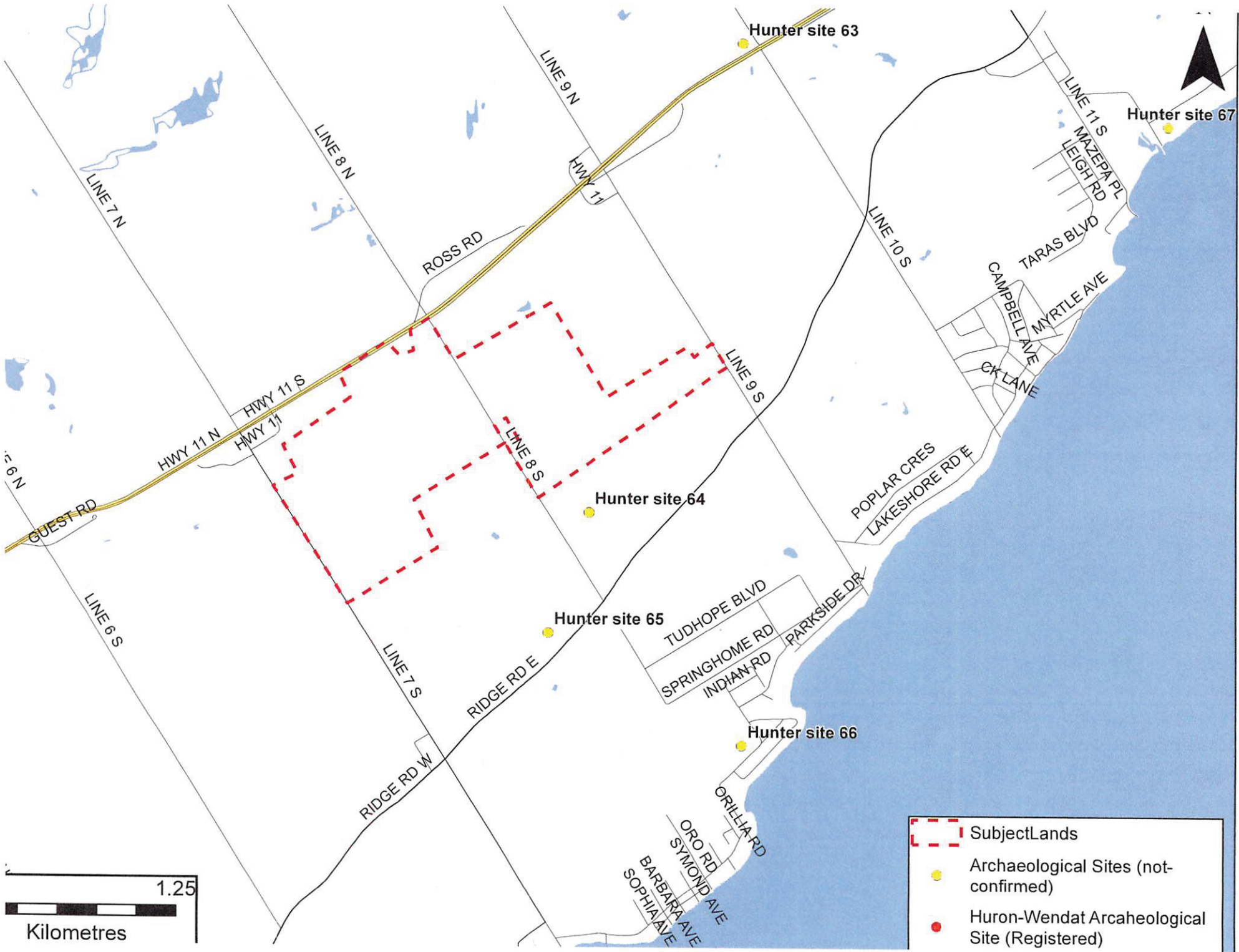
MAP OF THE TOWNSHIP OF ORO (SIMCOE COUNTY).

Explanations.—The small squares indicate the position of the different village sites, and the enclosed number in each refers, etc., etc.



2.0 SUPPLEMENT B – MAPPING OF HUNTER’S SITES PROVIDED BY THE HURON-WENDAT NATION

Supplement B, mapping of Hunter’s site in a portion of Simcoe County provided by the Huron-Wendat Nation, follows on the succeeding page.



-  Subject Lands
-  Archaeological Sites (not-confirmed)
-  Huron-Wendat Archaeological Site (Registered)



Report Signature Page

GOLDER ASSOCIATES LTD.

Jamie Lemon, M.A.
Project Archaeologist

Hugh Daechsel, M.A.
Principal, Senior Archaeologist

CWL/JLL

Golder, Golder Associates and the GA globe design are trademarks of Golder Associates Corporation.

\\golder.gds\gal\whitby\active\2015\3 proj\1534044 st 1 burl's crk_oro-medonte_burl's creek event grounds\03 reporting\stage 2\r02\final\p1056-0068-2016_13oct2016_sd.docx

As a global, employee-owned organisation with over 50 years of experience, Golder Associates is driven by our purpose to engineer earth's development while preserving earth's integrity. We deliver solutions that help our clients achieve their sustainable development goals by providing a wide range of independent consulting, design and construction services in our specialist areas of earth, environment and energy.

For more information, visit golder.com

Africa	+ 27 11 254 4800
Asia	+ 86 21 6258 5522
Australasia	+ 61 3 8862 3500
Europe	+ 44 1628 851851
North America	+ 1 800 275 3281
South America	+ 56 2 2616 2000

solutions@golder.com
www.golder.com

Golder Associates Ltd.
100, Scotia Court
Whitby, Ontario, L1N 8Y6
Canada
T: +1 (905) 723 2727

