

SOCIAL COMPETENCE

SCHOOL READINESS AS ASSESSED BY THE EDI, SIMCOE COUNTY 2010

Description of Domain and Sub-Domains

Sub Domain	Indication of Readiness	Related EDI Questions	
Overall social competence	Children with excellent or good overall social development, very good ability to get along with other children and play with various children, usually cooperative and self-confident.	Would you say this child: <ul style="list-style-type: none"> Plays and works cooperatively with other children at the level appropriate for his/her age Is able to play with various children Shows self-confidence 	How would you rate this child's: <ul style="list-style-type: none"> Overall social/emotional development Ability to get along with peers
Responsibility and respect	Children who always or most of the time show respect for others, and for property, follow rules and take care of materials, accept responsibility for actions, and show self-control.	Would you say this child: <ul style="list-style-type: none"> Follows rules and instructions Respects the property of others Demonstrates self-control Demonstrates respect for adults Demonstrates respect for other children 	<ul style="list-style-type: none"> Accepts responsibility for actions Takes care of school materials Shows tolerance to someone who made a mistake (e.g. when a child gives a wrong answer to teacher's question)
Approaches to learning	Children who always or most of the time work neatly, independently, and solve problems, follow instructions and class routines, easily adjust to changes.	Would you say this child: <ul style="list-style-type: none"> Listens attentively Follows directions Completes work on time Works independently Works neatly and carefully 	<ul style="list-style-type: none"> Is able to solve day-to-day problems by him/herself Is able to follow one-step instructions Is able to follow class routines without reminders
Readiness to explore new things	Children who are curious about the surrounding world, and are eager to explore new books, toys and games.	Would you say this child is: <ul style="list-style-type: none"> Curious about the world Eager to play with a new toy 	<ul style="list-style-type: none"> Eager to play a new game Eager to play with/read a new book

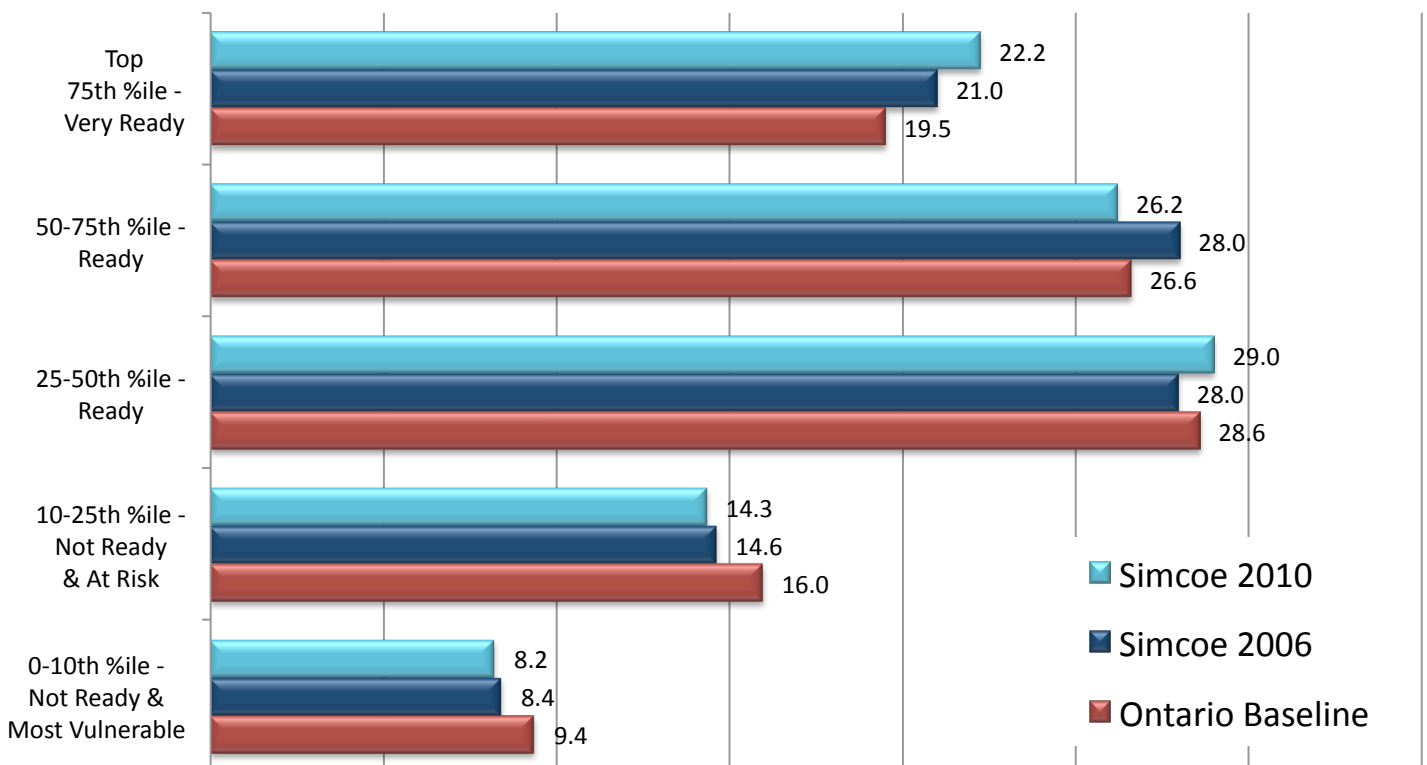
Domain Results

The mean score out of 10 is significantly **higher** in Simcoe County than in Ontario. Our score has stayed exactly the same as it was in 2006.

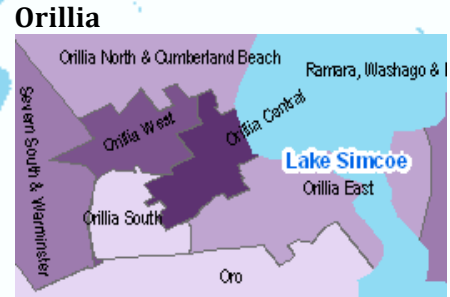
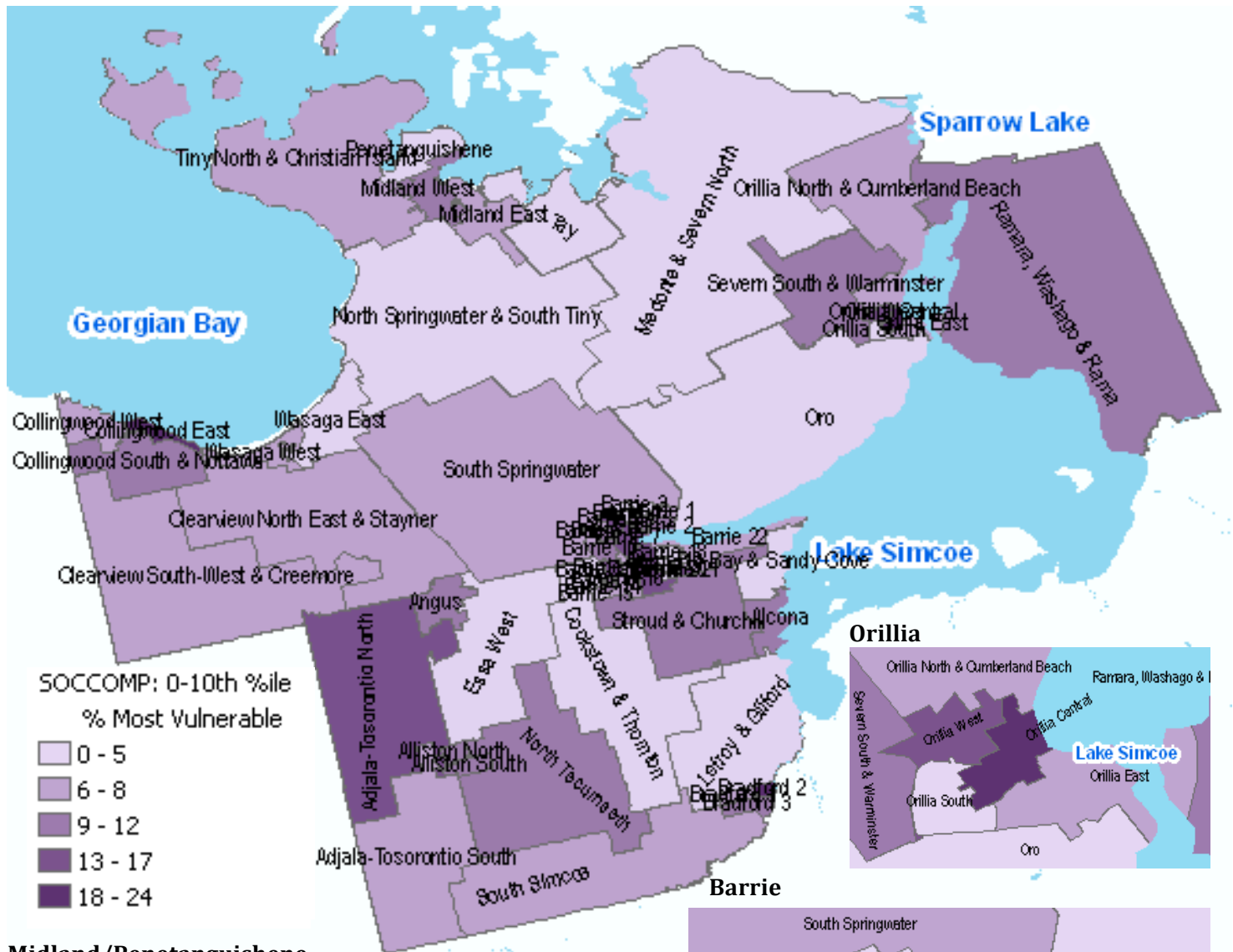
Simcoe 2010	Simcoe 2006	Ontario
8.45 ✓	8.45 ✓	8.34

Distribution within the Domain

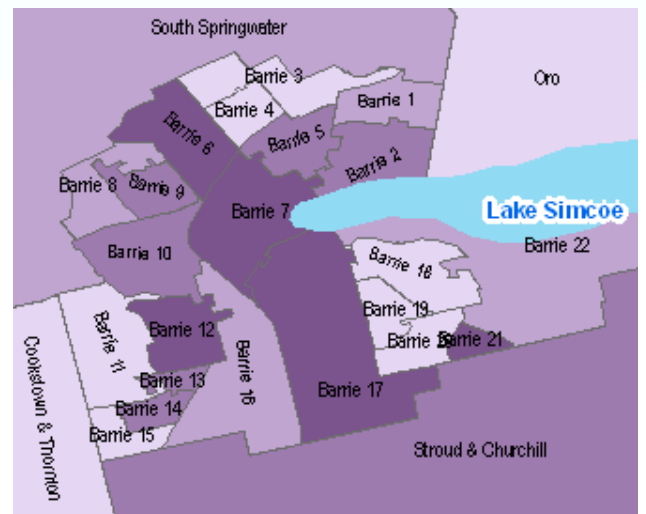
Comparison of the Distribution of Children in Social Competence



SOCIAL COMPETENCE: CHILDREN MOST VULNERABLE (IN THE LOWEST 10TH PERCENTILE)



Midland/Penetanguishene



Collingwood/Wasaga Beach



Alliston



Bradford

