

LANGUAGE & COGNITIVE DEVELOPMENT

SCHOOL READINESS AS ASSESSED BY THE EDI, SIMCOE COUNTY 2010

Description of Domain and Sub-Domains

Sub Domain	Indication of Readiness	Indication of not being Ready
Basic literacy	<ul style="list-style-type: none"> Children who have all the basic literacy skills: know how to handle a book, can identify some letters and attach sounds to some letters, show awareness of rhyming words, know the writing directions, and are able to write their own name. 	<ul style="list-style-type: none"> Children who do not have most of the basic literacy skills; they have problems with identifying letters or attaching sounds to them, rhyming, may not know the writing directions and even how to write own name.
Interest in literacy/ numeracy and memory	<ul style="list-style-type: none"> Children who show interest in books and reading, math and numbers, and have no difficulty with remembering things. 	<ul style="list-style-type: none"> Children who may not show interest in books and reading, or math and number games, or both, and may have difficulty remembering things.
Advanced literacy	<ul style="list-style-type: none"> Children who have at least half of the advanced literacy skills: reading simple, complex words or sentences, writing voluntarily, writing simple words or sentences. 	<ul style="list-style-type: none"> Children who have only up to one of the advanced literacy skills; who cannot read or write simple words, or sentences and rarely write voluntarily.
Basic numeracy	<ul style="list-style-type: none"> Children who have all the basic numeracy skills: can count to 20 and recognize shapes and numbers, compare numbers, sort and classify, use one-to-one correspondence, and understand simple time concepts. 	<ul style="list-style-type: none"> Children who have marked difficulty with numbers, cannot count, compare or recognize numbers, may not be able to name all the shapes and may have difficulty with time concepts.

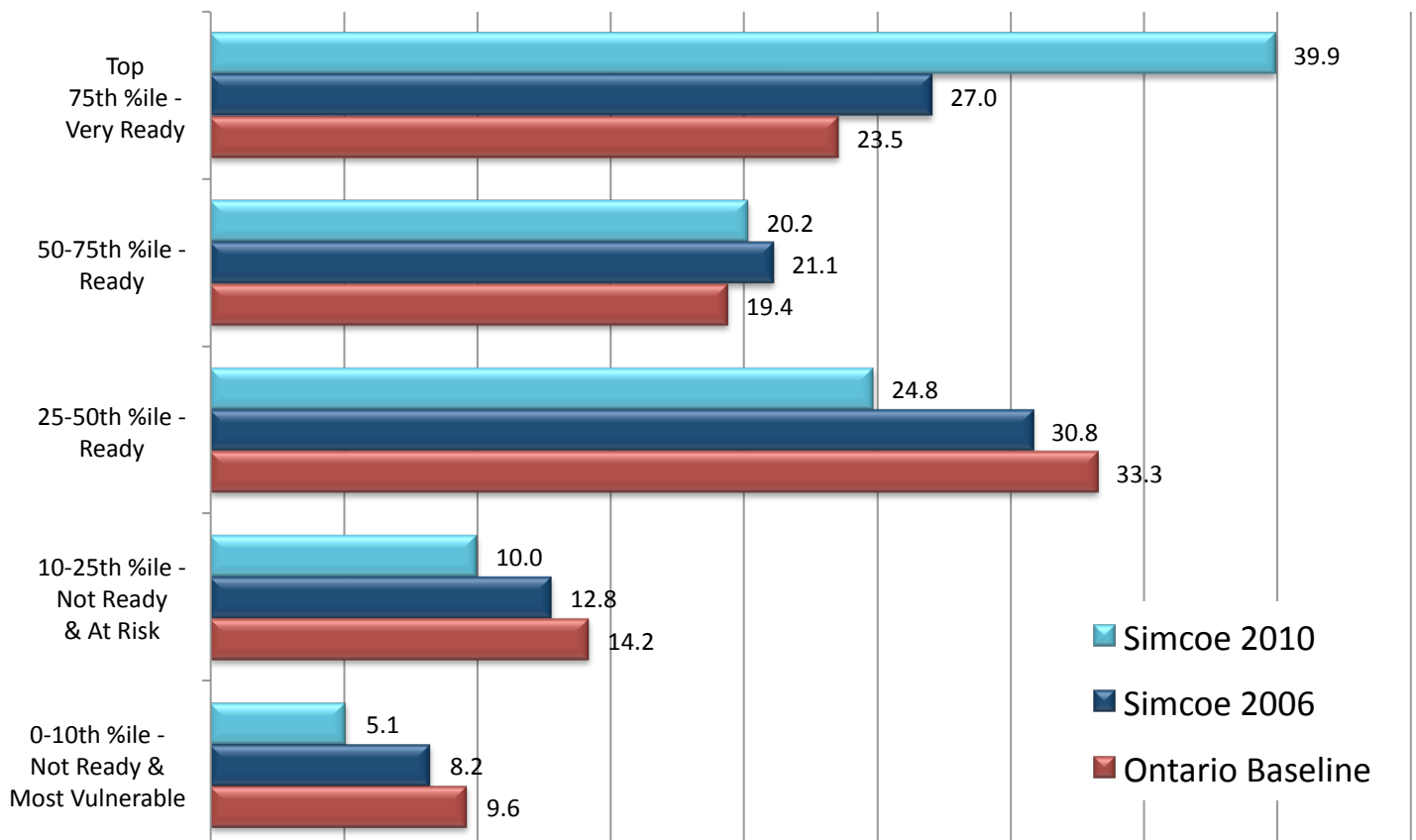
Domain Results

The mean score out of 10 is significantly *higher* in Simcoe County than in Ontario. This domain has even further improved since 2006.

Simcoe 2010	Simcoe 2006	Ontario
9.07 ✓	8.73 ✓	8.57

Distribution within the Domain

Comparison of the Distribution of Children in Language & Cognition



LANGUAGE & COGNITION: CHILDREN MOST VULNERABLE (IN THE LOWEST 10TH PERCENTILE)

