

Simcoe County Data Consortium

October 27, 2017 Updates

Simcoe County Administration Building

New Tecumseth Ramara Boardroom

Overview

- CDP Updates
- New Business
- Local Updates
- Next Meeting



CDP Updates

Working Groups

- Leads Teleconference meeting updates
- Data Purchase and Access Working Group Meeting
 - *Age groups*
 - *Circulate list of Target Group Profile requests*
 - *Basics costs for tables: Semi-custom (TGP) = \$245; Basic custom = \$509+*
 - *Variables missing that you need, get back to us and we'll look into getting a table that meets this need*

Training and Capacity Building Working Group

- *Approved Training and Capacity Building Strategy and Working Plan 2017-2018*
- *Trainings in Simcoe County Administration Building*



CDP Updates

Data Releases

New tables/profiles

Census 2016 data Tables:

Age and Sex

Language

Type of Dwelling

Family, Household and Marital Status

Income

Immigration and Ethnocultural Diversity

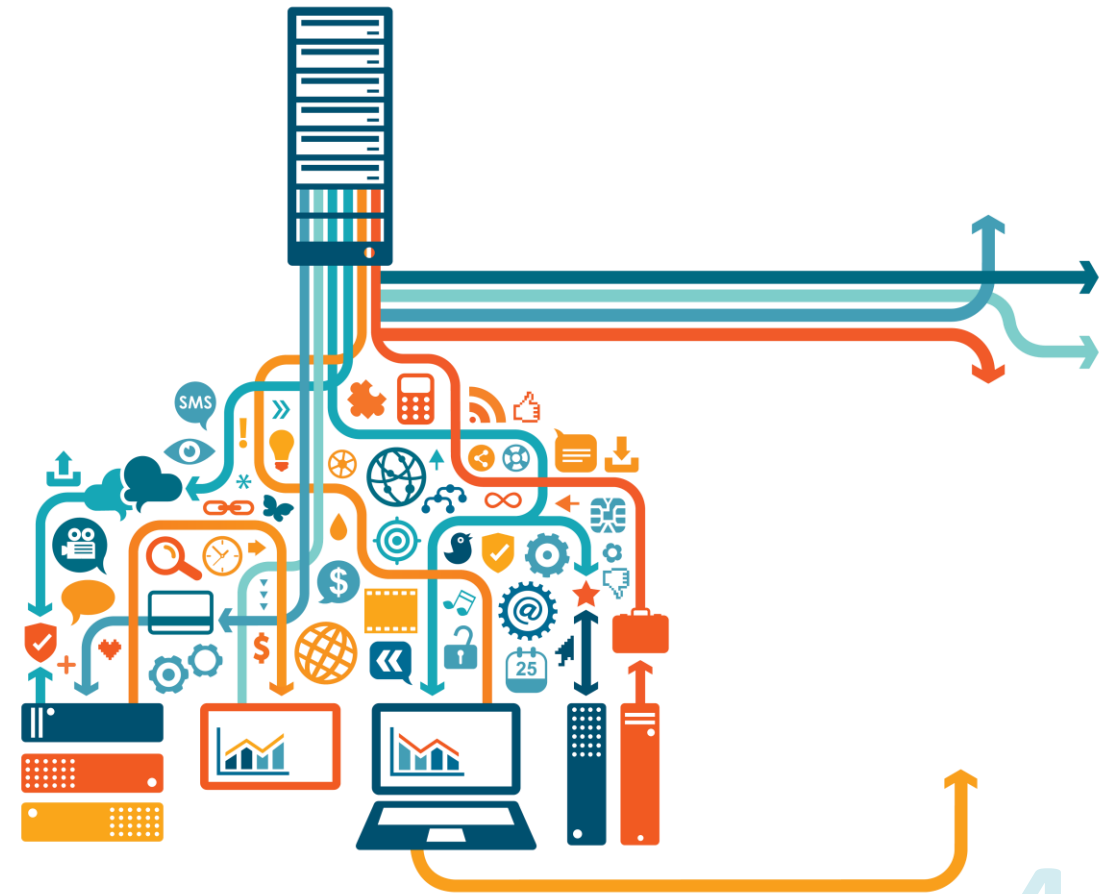
Income Inequality tables 2014 and 2015 (based on Tax Filer data)

Working Poverty tables for 2014 and 2015 (based on Tax Filer data)

MIG: Migration Estimates, Table E, 2014

Upcoming data

November, 2017 – The final Census Data Release: Education, Labour, Journey to Work, Language of Work, Mobility and Migration



CDP Updates

2021 Census Content Consultations

Statistics Canada is conducting a public consultation on the 2021 Census of Population from September to December 2017.

Statistics Canada is seeking ideas for new or modified census content, as well as data sources that could be used to supplement or replace current content, to ensure that census information remains relevant for the people and organizations that use it:

- assess census data users' needs and identify data gaps
- understand how census data are used
- identify other data sources that could supplement or replace current census content.

Click on the link below or copy this link to your browser to take part in the consultation and to complete the consultation questionnaire

<http://www12.statcan.gc.ca/census-recensement/2021/consultation/index-eng.cfm>.

Comments collected during the consultation may be published anonymously in the 2021 Census of Population Content Consultation Report, which will be available on the Statistics Canada website in the fall of 2019.



CDP Updates

Chronic Low Income Among Immigrants

Chronic Low Income Among Immigrants in Canada and its Communities

The study *Chronic Low Income Among Immigrants in Canada and its Communities* provides new evidence on the incidence of chronic low income among immigrants aged 25 or older during the 2000s as well as variations across 29 Canadian cities and regions. Chronic low income is defined as having a family income under a low-income cut-off for five or more consecutive years.

This paper employs data from the Longitudinal Immigration Database (IMDB) for the period from 1993 to 2012.

Read the full study
here: <http://www.statcan.gc.ca/pub/11f0019m/11f0019m2017397-eng.htm>



CDP Updates

Webinars



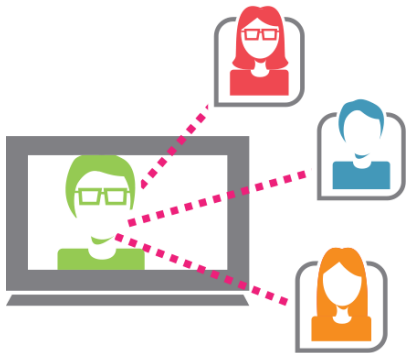
- Regular webinars related to Census Data findings, and other data related issues
- Next Webinar:

*Statistics Canada is offering a webinar on November 8th and 9th on **Immigration, ethnocultural diversity and Housing.***

- **Please note:** Advanced registration is required.
This webinar will provide you with an overview of the:
 - Census long-form immigration, ethnocultural diversity and housing concepts
 - Data products and resources available from the fifth 2016 Census of Population release

- To register for the **English** session, click [HERE](#).
- You are welcome to come to listen to the webinar at Simcoe County administration building!

Send an Email at Olga.Belanovskaya@Simcoe.ca



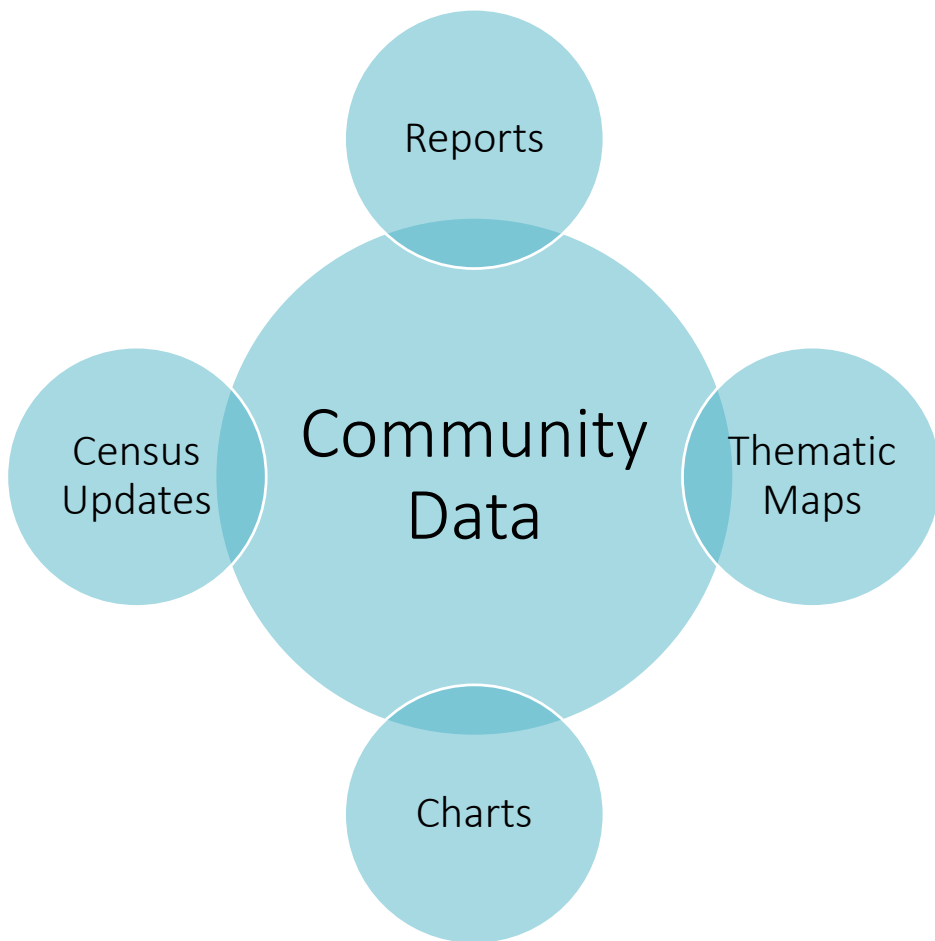
New Business Membership



Simcoe County Local Data Consortium membership
update from the 2017-2022 agreement



New Business: Community Data Web Page



Population by Age Groups
The table below provides Percent of Total Population by age groups for Simcoe County Census Division and its Municipalities (Census Subdivisions)

Percent of the Total Population by Age groups for Simcoe County and Municipalities 2016

Geographic Names	0-14 years	15-24 years	25-34 years	35-44 years	45-54 years	55-64 years	65+ years
Adjala-Tosoronto	16%	13%	9%	11%	19%	16%	15%
Barnes	18%	14%	13%	13%	15%	12%	14%
Bradford West Gwillimbury	20%	12%	14%	15%	15%	12%	11%
Christian Island	16%	12%	10%	11%	14%	16%	15%
Cleanview	14%	10%	10%	11%	16%	16%	15%
Collingwood	19%	15%	14%	13%	16%	16%	12%
Essa	17%	12%	11%	13%	16%	12%	12%
Innisfil	14%	10%	10%	10%	13%	16%	15%
Midland	17%	12%	11%	13%	16%	12%	12%
Mnjikaning First Nation 32	23%	14%	13%	14%	14%	14%	14%
New Tecumseth	14%	11%	12%	12%	15%	13%	13%
Orillia	15%	11%	9%	11%	17%	18%	18%
Oro-Medonte	12%	10%	8%	9%	15%	17%	17%
Panetanguishene	14%	11%	9%	11%	17%	18%	18%
Ramara	12%	10%	8%	9%	15%	17%	17%
Severn	14%	11%	9%	11%	17%	18%	18%
Springwater	18%	13%	9%	11%	16%	17%	17%
Tay	13%	10%	10%	11%	16%	17%	17%
Tiny	12%	10%	8%	9%	15%	17%	17%
Wasaga Beach	12%	8%	7%	9%	15%	20%	18%
Simcoe County	12%	12%	12%	12%	15%	14%	18%

Source: Census Profile - Age, Sex and Type of Dwelling for Canada, Provinces and Territories, Census Divisions and Census Subdivisions, 2016 Census, Catalogue No. 98-401-X2016001-Community Data Program

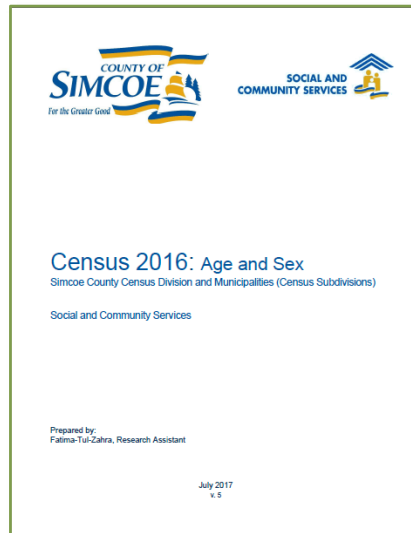
Note: *Christian Island 30 and Christian Island 30A data are combined for 2016



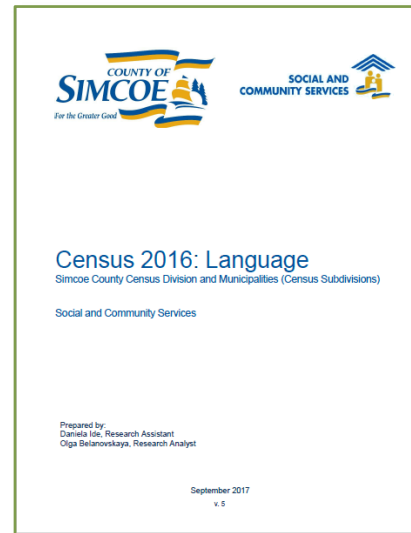
New Business: 2016 Census Update Reports



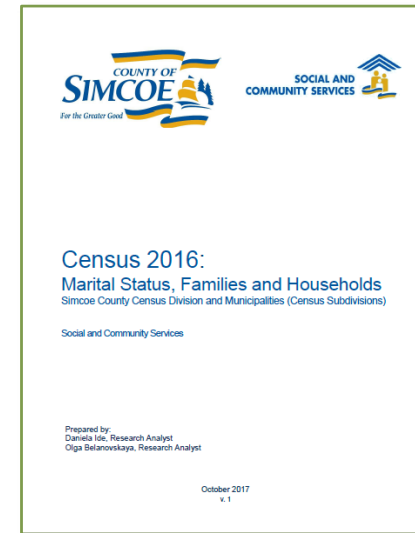
simcoe.ca/communitydata



July 2017



September 2017



October 2017



Local Updates

Living Wage 2016

The Simcoe County Living Wage Calculation complete for 2016!

Living Wage Calculation for a family of four living in Simcoe County is 17.74 per hour.

Hypothetical family includes two working parents with two children (three and seven years old). One parent takes courses in Georgian College. Both parents have cars to meet their needs.

Final report to be launched in November 2017.



New Business





Next meeting

Spring 2018 – Date TBD

For more information contact:

Irena Pozgaj-Jones, Program Supervisor, at irena.pozgaj-jones@simcoe.ca

Olga Belanovskaya, Research Analyst, at olga.belanovskaya@simcoe.ca