

**STAGE 3 SITE SPECIFIC ASSESSMENT
SIMCOE ENVIRONMENTAL RESOURCE RECOVERY CENTRE
GRIBBIN SITE (BdGw-49)
PART OF LOT 2, CONCESSION I, FORMER FLOS TOWNSHIP
NOW SPRINGWATER TOWNSHIP, COUNTY OF SIMCOE, ONTARIO**

ORIGINAL REPORT

Prepared for:

GHD (Toronto)
c/o Brian Dermody
184 Front Street East, Suite 302
Toronto, Ontario M5A 4N3
Tel: (416) 866-2361

Archaeological Licence P128 (K Hull)
MTCS PIF P128-0150-2016
ASI File 16EA-249

11 November 2016



**STAGE 3 SITE SPECIFIC ASSESSMENT
SIMCOE ENVIRONMENTAL RESOURCE RECOVERY CENTRE
GRIBBIN SITE (BdGw-49)
PART OF LOT 2, CONCESSION I, FORMER FLOS TOWNSHIP
NOW SPRINGWATER TOWNSHIP, COUNTY OF SIMCOE, ONTARIO**

EXECUTIVE SUMMARY

Archaeological Services Inc. (ASI) was contracted by GHD to conduct a Stage 3 Site-Specific Assessment of the Gribbin site (BdGw-49). This site was identified by ASI during a Stage 1-2 Archaeological Assessment which was part of the proposed Simcoe Environmental Resource Recovery Centre, housing a Materials Management Facility and an Organics Processing Facility, on Horseshoe Valley Road West, in the Township of Springwater, County of Simcoe, Ontario.

The Stage 3 Archaeological Assessment of the Gribbin site was conducted in accordance with the *Ontario Heritage Act* and the *Standards and Guidelines for Consultant Archaeologists (S & G)*. The site was subject to the excavation of one meter square test units over the locations of positive Stage 2 test pits. Test unit excavation began September 12, 2016 and continued until September 16, 2016. Thirty-two one-metre test units were excavated over an area approximately 40 m E-W by 40 m N-S. A total of 1,726 Euro-Canadian historical artifacts was recovered during the Stage 3 assessment of this site. One potential feature was documented.

Archival research supported by the recovered artifact assemblage and excavation indicates that the Gribbin site represents a mid-nineteenth century Euro-Canadian archaeological resource with cultural heritage value or interest. Discussions with the County of Simcoe demonstrate that they are willing to protect the Gribbin site from further impacts. The proponent's engineering team has created a new alternative impact footprint for the Simcoe Environmental Resource Recovery Centre that avoids the Gribbin site altogether. Given the relatively compact size and location of the site, and the fact that the County already owns the property, the Gribbin site (BdGw-49) is an excellent candidate to be subject to a Stage 4 Avoidance and Protection strategy. ASI therefore recommends the Gribbin site (BdGw-49) be subjected to Stage 4 Avoidance and Protection, in accordance with the S & G, using the long term protection mechanisms available to Simcoe County.



PROJECT PERSONNEL

<i>Senior Project Manager:</i>	Lisa Merritt, MSc. (P094) <i>Partner / Director</i> <i>Environmental Assessment Division</i>
<i>Project Manager and Licensee:</i>	Katherine Hull, PhD. (P128) <i>Partner / Director</i> <i>Cultural Heritage Division</i>
<i>Project Coordinator:</i>	Sarah Jagelewski, Hon. BA (R405), <i>Staff Archaeologist, Assistant Manager</i> <i>Environmental Assessment Division</i>
<i>Project Administrator:</i>	Carol Bella, BA, <i>Research Archaeologist</i>
<i>Field Director:</i>	Rachael Johnston, MA (R1008) Alexis Dunlop, MSc (R377)
<i>Field Archaeologists:</i>	Poorya Kashani (R1133) Mandy McGonigle Alisa Mahrova Rob Wojtowicz, BSc (R291) Nelson Cifuentes, Hon. BA Erika Johannsen Bruce Welsh, PhD (PO47) Ella Boswell
<i>Report Preparation:</i>	Katherine Hull
<i>Archival Research:</i>	Eliza Brandy, MA (R1109) Katherine Hull
<i>Graphics:</i>	Jonas Fernandez, MSc. (R281), <i>Geomatics Specialist</i>
<i>Artifact Processing:</i>	Johanna Brouwers
<i>Artifact Photography:</i>	Katherine Hull
<i>Historical Artifact Analysis:</i>	Katherine Hull
<i>Report Reviewer:</i>	Lisa Merritt



TABLE OF CONTENTS

EXECUTIVE SUMMARY	i
PROJECT PERSONNEL	ii
TABLE OF CONTENTS	iii
1.0 PROJECT CONTEXT	1
1.1 Development Context	1
1.2 Historical Context	2
1.3 Archaeological Context	3
1.3.1 Summary of the Combined Stage 1-2 Archaeological Assessment	3
1.3.2 Stage 3 Archaeological Assessment	4
2.0 FIELD METHODS	5
2.1 Stratigraphy	5
3.0 RECORD OF FINDS	5
3.1 Artifact Distributions and Frequencies	5
3.2 Potential Features	6
3.3 Artifact Analysis	6
3.3.2 Architectural Class	9
3.3.3 Organic Class	9
3.3.4 Tools and Equipment	9
3.3.5 Personal Artifacts	9
3.3.6 Indeterminate Class	10
3.4 Documentary Record	10
4.0 ANALYSIS AND CONCLUSIONS	11
5.0 RECOMMENDATIONS	12
6.0 LEGISLATION COMPLIANCE ADVICE	14
7.0 BIBLIOGRAPHY	15
8.0 IMAGES	17
9.0 MAP	20
APPENDIX A	24

LIST OF TABLES

Table 1: Sites Registered Within 1 km of the Gribbin Site (BdGw-49)	3
Table 2: Gribbin Site (BdGw-49) Historical Artifact Counts by Functional Class	6
Table 3: Gribbin Site (BdGw-49) Historical Ceramic Counts by Ware Type	7
Table 4: Gribbin Site (BdGw-49) Historical Ceramic Counts by Datable Decorative Style	8
Table 5: Buttons, Gribbin Site (BdGw-49)	10
Table 6: White Ball Clay Smoking Pipes, Gribbin Site (BdGw-49)	10
Table 7: Inventory of Documentary and Material Record	11



LIST OF PLATES

Plate 1: Setting in the grid over the site area, looking northwest.	17
Plate 2: Recording GPS coordinates, looking east.	17
Plate 3: Text unit excavation, looking north.	17
Plate 4: Test unit excavation, looking west.	17
Plate 5: Typical test unit soil profile, 510N-195E, south wall.	17
Plate 6: Miscellaneous decorated RWE sherds.	17
Plate 7: Stamped and sponged RWE sherds.	18
Plate 8: Printed RWE sherds.	18
Plate 9: Miscellaneous kitchenware.	18
Plate 10: Miscellaneous glass.	18
Plate 11: Ferrous metal artifacts.	19
Plate 12: Partial felling axe (Cat.#760).	19
Plate 10: Personal class artifacts.	19

LIST OF FIGURES

Figure 1: Location of Simcoe Environmental Resource Recovery Centre Project Area	21
Figure 2: Results of the Stage 3 Assessment and the Location of Positive Stage 2 Test Pits.	22
Figure 3: Plan View of Feature, Gribbin Site (BdGw-49).	23



1.0 PROJECT CONTEXT

Archaeological Services Inc. (ASI) was contracted by GHD to conduct a Stage 3 site-specific archaeological assessment of the Gribbin site (BdGw-49) located on part of Lot 2, Concession I, in the historical Township of Flos, now in the Township of Springwater, County of Simcoe, Ontario (Figure 1; Supplementary Documentation Figure 1). This assessment occurred in advance of the development of the Simcoe Environmental Resource Recovery Centre (ERRC) which will house a Materials Management Facility and an Organics Processing Facility on Horseshoe Valley Road West.

This report summarizes the results of the Stage 1-2 Archaeological Assessment (ASI 2016) and presents the results of the Stage 3 Site-Specific Archaeological Assessment.

All activities carried out during this assessment were completed in accordance with the terms of the *Ontario Heritage Act* and the *Standards and Guidelines for Consultant Archaeologists (S & G)*, administered by the Ministry of Tourism, Culture and Sport (MTCS).

Following the S & G, the objectives of this report are:

- To determine the extent of the archaeological sites and the characteristics of the artifacts;
- To collect a representative sample of artifacts;
- To assess the cultural heritage value or interest of the archaeological sites; and
- To determine the need for mitigation of development impacts and recommend appropriate strategies for mitigation and future conservation.

1.1 Development Context

The project is regulated under the Environmental Protection Act and will require Environmental Compliance Approvals (ECAs) issued by the Ministry of the Environment and Climate Change (MOECC). The approvals process will require submission of environmental and technical reports and assurances that First Nations, public, and stakeholder consultation has been undertaken. Although an EA is not required, due to the operational scale of the proposed ERRC, the County of Simcoe (2015) has approached the project with this framework in mind. All work has been undertaken as required by Simcoe County and Township of Springwater for OP/zoning by-law amendments.

All activities carried out during this assessment were completed in accordance with the *Ontario Heritage Act* (2005), and the *S & G* and fulfills previous recommendations made for this site (ASI 2016) in advance of any project impacts.

The Stage 3 archaeological assessment is being conducted to satisfy recommendations made in the Stage 1 & 2 archaeological assessment which was undertaken in 2016 by ASI (ASI 2016).

Authorization to carry out the activities necessary for the completion of the Stage 3 archaeological assessment was granted to ASI by GHD on September 9, 2016.



1.2 Historical Context

The research presented below can be used to place the historical site on Lot 2, Concession I, Former Township of Flos.

In April 1821, legislation passed by the government of Upper Canada provided for the creation of Simcoe County, which could be declared a separate county “by proclamation.” Another later act of the legislative assembly provided that Simcoe County would be elevated to independent County status when a jail and a court house were completed in the county town of Barrie.

The land within Flos Township was first settled along the Penetanguishene Road in 1811, and the first permanent settlers were escaped slaves named Benjamin and William Davenport. They had purchased a remote lot in Flos instead of settling one of the free land grants in Oro Township, which was known to be poor farm land given to black settlers (Hunter 1909:118). The formal township survey occurred in 1822, which was later than neighboring townships due to the dense forests and the lack of transportation routes. The first school was opened along Penetanguishene Road in Hillsdale, which bordered Medonte Township. By 1842, the population of the township was around 200 inhabitants. Flos was incorporated in January of 1854 and divided into five wards. Mid-nineteenth century industry consisted primarily of farming and lumbering, where goods were sent largely via Penetanguishene Road to Barrie, or later by rail when the North Simcoe Branch of the Northern Railway was opened in 1879 (Archives Association of Ontario n.d.; Mika and Mika 1981). By 1881, Flos had a population of approximately 2,500 (McDonald 1881:4). In 1994, the Township of Flos amalgamated with the Village of Elmvalle and Township of Vespra to form the Township of Springwater.

According to the Ontario Land Records Index, the Crown Patent for all 200 acres of Lot 2 Concession I was granted to John McAvoy in 1839, which was previously clergy reserve. In 1847, John’s son James McAvoy, along with James Gribbin of Barrie, claimed to the District of Simcoe that the northern half of the lot had occupied since 1844 (Township Papers MS 658 reel 149). In 1849, the southern 100 acres were granted by the crown to John’s brother Henry McAvoy, who in 1856 sold the first four acres of his parcel, and in 1859 sold the entire 100 acres, to the Roman Catholic Church Corporation.

The northern 100 acres of the lot continued to be occupied by the Gribbin family (alternatively spelled Gribbon, Gribban, and Gribben). Richard Gribbin, possibly the brother of the aforementioned James, appears on the lot in the 1861 Census of Canada. In that year he was listed as a 65 year old Irish Roman Catholic farmer living with his wife Bridget (50), and their children Michael, Henry, Andrew, John, and Ellen in a one storey log house. The agricultural census return for that same year described their farm as consisting of 20 acres in crops (wheat, peas, oats, potatoes, and hay), 30 acres of pasture, and 50 acres of woodlot. A map created by the enumerator of the 1861 census indicates two houses in the north part of the lot, and one house in the south along the road (SD Figure 3). It was not until 1866 that the Crown patent was granted to Richard Gribbin for the north 100 acres of the lot. It is within this 100-acre parcel that the Gribbin site was found. Sometime before 1868, Richard sold his 100 acres to his son Andrew Gribbin. By the time of the 1871 census, Richard had died, and only Bridget, Andrew, and Michael are listed as living on the lot. Records indicate that Andrew Gribbin retained possession of the land (SD Figures 4, 5), however, it was mortgaged numerous times for a period of 15 years. Eventually, the North British Canadian Investment Company had taken ownership of the land and later sold it to James Robertson in 1884, who lived there until his death in 1913 when the land was willed to his son Frederick (Land Registry Office Abstract Index to Deed Titles, reels GSU 178957 and GSU178801; Township Papers MS 658 reel 149; Census Rolls 1861:5, 73, 1871:15).



In summary, the original occupants of the northern half of Lot 2, Concession I were likely James McAvoy and James Gribbin *circa* 1844. The Gribbin family continued to own the northern 100 acres of the lot, and Richard Gribbin and his family were using the land for agricultural practices by 1861. After Richard died prior to 1871, the family continued to live on the lot. However, Andrew Gribbin had to mortgage it numerous times during a period of at least 15 years. It was eventually claimed by the North British Canadian Investment Company. It was then sold in 1884 to James Robertson, who later willed it in 1913 to his son Frederick.

1.3 Archaeological Context

1.3.1 Summary of the Combined Stage 1-2 Archaeological Assessment

According to a review of the Ontario Archaeological Sites Database (OASD) conducted in 2016, one archaeological site has been registered within a one kilometre radius of the Gribbin site (Table 1). No sites are located within 50 metres of the Gribbin site.

Table 1: Sites Registered Within 1 km of the Gribbin Site (BdGw-49)

Borden	Site Name	Cultural Affiliation	Site type	Researcher
BdGw-39	Johnson	Post-Contact	Homestead (1870-1910)	ARA* 1994

*ARA – Archaeological Research Associates Limited

The Stage 1-2 archaeological assessment of the Simcoe Environmental Resource Recovery Centre, of which the Gribbin site is a part, was conducted by ASI in 2016. A report summarizing the results, *Stage 1 & 2 Archaeological Assessment, Simcoe Environmental Resource Recovery Centre, 2976 Horseshoe Valley Road West, Part of Lot 2, Concession 1, Former Township of Flos, County of Simcoe Township of Springwater, Ontario* (PIF P094-0198-2016) was prepared in November 2016.

The report included a review of the historical and archaeological context of the study corridor which discussed the Aboriginal and Euro-Canadian settlement history, review of historical mapping, the identification of designated, listed heritage properties and conservation districts within 300 metres, a review of commemorative markers within 300 metres, a review of registered archaeological sites within a one kilometre radius, and a search for previous assessments conducted within 50 metres of the subject area. The Stage 1 background research indicated that there was elevated potential to locate both Aboriginal and Euro-Canadian archaeological sites within the subject area.

The Stage 2 property assessment was conducted by Rachael Johnston (R1008) and Alexis Dunlop (R377), both of ASI, on August 9, 15, 17-19, 22-24, and September 2, 2016 in accordance with the *Ontario Heritage Act* and the *Standards and Guidelines for Consultant Archaeologists* (S & G). The total Stage 2 study area was approximately 10.9 ha and included both the original and the revised ERRC facility footprint and access road. ASI began the Stage 2 property survey in August and assessed the original facility footprint and access road which measured approximately 4.5 ha. Approximately 0.3 hectares were found to have no potential due to deep and pervasive disturbance while the remainder of the project study corridor (7.2 ha) was assessed by test pit survey at five metre intervals.



ASI returned to the property in October when the facility footprint design and access road were revised and shifted to the south and east. The revised facility footprint measures approximately 4.5 ha, of which 1.2 ha overlaps with the previous footprint location. The access road is approximately 3 ha and it makes use of part of an existing trail with a 10 m buffer on either side. While the whole trail was examined by ASI only about 750 m of the trail will be used for the main access road connecting the ERRC facility to Horseshoe Valley Road via a slight jog in the south end.

The Stage 2 assessment identified one Euro-Canadian archaeological site (H2), one Euro-Canadian findspot (H1), and one isolated Indigenous findspot (P1). It was determined that Site H2 (later named the Gribbin site) corresponds to an occupation *circa* 1840-1880 and, as such, required Stage 3 assessment in order to clarify the nature and extent of the cultural deposits. The H1 and P1 findspots did not exhibit sufficient cultural heritage value or interest to require further archaeological assessment.

The Gribbin Site (BdGw-49)

The Gribbin site was identified by ASI during the Stage 2 test pit during the survey of the subject property. The site area is located within a woodlot within the Simcoe Uplands physiographic region and contains gently undulating to level topography. In total, 76 Euro-Canadian artifacts were recovered from 20 positive test pits. The Stage 2 results indicated that the site measured approximately 30 metres long and 30 metres wide (Figure 2). The major artifact categories noted in the field were architectural items and domestic ceramics. The material found at the Gribbin site is consistent with an occupation dating from between *circa* 1840 and 1880. All artifacts encountered during the excavation of test pits were collected. The site was assigned Borden number BdGw-49 by MTCS.

Due to the potential cultural heritage value or interest (CHVI) of the site, it was recommended that the Gribbin site (BdGw-49) be subject to a Stage 3 archaeological assessment in accordance with the S & G in order to clarify the nature and extent of the cultural deposits (ASI 2014).

1.3.2 Stage 3 Archaeological Assessment

The Stage 3 archaeological assessment employs fieldwork to gather additional data pertaining to the cultural heritage value or interest of an archaeological site. In unploughed areas, one-metre-square test unit excavation is the typical field method utilized to conduct the investigation (see Section 2.0).

The Gribbin site is located within a wooded area northwest of Horseshoe Valley Road and southeast of Rainbow Valley Road. The site was previously located during a Stage 2 test pit survey undertaken by ASI (2016). The centre of the site is located in a small semi-open area surrounded by a wood lot. The Stage 3 assessment was not limited by any topographic features or property limits, as the entire parcel is owned by the Proponent. However, the proponent is limiting their impacts to a preferred Project Footprint (Supplementary Documentation Figures 2, 3).

The PIF for the Stage 3 assessment (PIF P128-0150-2016) is dated September 12, 2016. The Stage 3 assessment of the site consisted of test unit excavation initiated on September 12, 2016 and continuing until September 16, 2016 under the field direction of Rachael Johnston (R1008). The field conditions were similar to those found during the Stage 2 assessment.



2.0 FIELD METHODS

The Stage 3 archaeological assessment of the Gribbin site was conducted in accordance with the *Ontario Heritage Act* (1990) and the S & G. The site-specific assessment uses fieldwork to gather additional data pertaining to the cultural heritage value or interest of an archaeological site. During all periods of field assessment, weather and lighting conditions were sunny with seasonal temperatures which permitted good visibility and were in accordance with the S & G, Section 3.2.2. The excavation results and field conditions are mapped and presented in Section 9.0 (Figures 2, 3) and associated photography is presented in Section 8.0 (Plates 1-5; Figure 2).

The site was relocated using mapping and GPS coordinates recorded during the Stage 2 assessment (ASI 2016). A ten metre grid oriented to magnetic north was laid out by total station to overlap the positive test pits identified during the Stage 2 survey. The datum established for the Stage 2 assessment was used for recording test unit excavation (500N-200E). A series of one-metre-square test units were excavated to determine the nature and extent of cultural deposits in the topsoil within the site area, as indicated by the distribution of the positive Stage 2 test pits (Figure 2). The GPS coordinates for the site (including the central datum point and multiple points taken at various landmarks and at the edges of the site) were recorded and are presented in the Supplementary Documentation, Table 1.

The following standards for test unit strategy were applied, according to S & G Table 3.1: 22 test units were excavated across a 10 metre grid over the site area and an additional ten test units (>40%) were excavated in areas of higher artifact concentrations to help define midden deposits (Figure 2).

The site limits were established when the artifact yields in test units were 30 or less and when the entire area of positive Stage 2 test pits was assessed. All test units were hand-excavated to a minimum of five centimetres into sterile subsoil. Soil fills were screened through six millimetre wire mesh to facilitate artifact recovery. The subsoil was trowelled, and all wall profiles were examined for undisturbed cultural deposits. All test units were backfilled at the conclusion of excavation.

2.1 Stratigraphy

Test units exhibited a basic soil sequence of dark brown (10YR3/3) sandy loam topsoil directly above a dark yellowish brown (10YR4/4) sandy subsoil. Test unit depths in this area ranged from 18 cm (505N-210E and 495N-195E) to 33 cm (500N-184E).

3.0 RECORD OF FINDS

3.1 Artifact Distributions and Frequencies

Thirty-two test units were excavated over an area of 40 m E-W by 40 m N-S (Figure 2). Artifact yields ranged from 275 artifacts in unit 495N-207E to zero artifacts in 470N-215E. A total of 1,726 Euro-Canadian historical artifacts was recovered during the Stage 3 assessment of this site.

On historical sites, the kitchen/food-related and organic classes are best represented when middens form through regular discard of food bone and broken dishes during the occupation of a house. During the early-to-mid nineteenth century, these middens formed close to the house as per the pattern of refuse disposal described by Stanley South (1977) and documented on archaeological sites in rural southern



Ontario (MacDonald 1997). The pattern of refuse disposal changed during the late nineteenth and early twentieth centuries as people began to carry refuse away and dump it in discrete places away from their house. At the Gribbin site, 62.3% (n=1,075) of the total historical artifact assemblage was assigned to the kitchen and food-related class, and 1.5% (n=25) of the total artifact assemblage to the organic class. This is consistent with the formation of a mid nineteenth century midden and likely represents the presence of a former homestead.

3.2 Potential Features

One potential feature was identified during the Stage 3 assessment of the Gribbin site. Excavation of the unit stopped when the potential feature was identified. The feature was then covered with geotextile and backfilled.

The feature was identified within the southeast corner of unit 484N-210E. The fill is described as a greyish brown clay (10YR5/2) deposit with clear, defined limits. It may represent the clay cap to a deeper feature (Figure 3).

3.3 Artifact Analysis

The Stage 3 assessment of the Gribbin site yielded 1,726 Euro-Canadian historical artifacts. Detailed historical artifact catalogues are located in Appendix A-1 (non-ceramic) and Appendix A-2 (ceramic). The “Classification System for Historical Collections” (Canadian Parks Service 1992) was used to organize these historical artifacts. The category of “Organic” was added to account for floral and faunal remains commonly found on historical sites (Table 2).

Table 2: Gribbin Site (BdGw-49) Historical Artifact Counts by Functional Class

Class	Total	Percentage
Architectural	431	25.0
Indeterminate	120	7.0
Kitchen/Food	1,075	62.3
Organic	25	1.5
Personal	39	2.3
Tools/Equipment	36	2.1
Total	1,726	100.2

3.3.1 Kitchen/ Food-Related Class

The kitchen/food-related artifacts account for 62.3% (n=1,075) of the total artifacts collected. These artifacts are related to the consumption, preparation, service, and storage of food and of beverages. The artifacts included items of metal, ceramic, and glass composition.



Ceramic

The artifact assemblage at the site contains 1,042 ceramic sherds (Plates 5-9). A complete catalogue of all collected ceramics from this site can be found in Appendix A-2. Some identifiable ware types (Table 3) and decorative motifs (Table 4) recorded in this assemblage are useful in providing temporal information as they correspond to the evolution of industrial-era ceramic production and trends in consumer preference over time.

Table 3: Gribbin Site (BdGw-49) Historical Ceramic Counts by Ware Type

Ware Type	Date Range*	Total	Percentage
Buff earthenware	1830s-1900	75	7.2
Ironstone	Late 1840s-1890	78	7.5
Red earthenware, coarse	1830s-1900	105	10.1
Red earthenware, refined	1700s-1900s	5	0.5
Refined white earthenware (RWE)	1830s-1900s	758	72.7
Stoneware (Ontario made)	1850s-present	2	0.2
Unidentifiable	n/a	1	0.1
Yellow ware	1840s-1900s	18	1.7
Total		1,042	100.0

**date of availability in Southern Ontario*

The most strongly represented ceramic ware type in this assemblage is refined white earthenware (RWE) (n=758). In the 1830s, refined white earthenware (or whiteware) was first produced and represented a change in glaze composition as ceramics went from a lead-based to a lead-free glaze (I. Kenyon 1980). Being whiter in colour in comparison to its predecessor pearlware, the various colours used to decorate the refined earthenware vessels tended to look brighter and as such, refined white earthenware became the most popular ware type of the mid-nineteenth century (Majewski and O'Brien 1987). Ironstone, a later refined white earthenware type, is also represented (n=78). This ceramic is a very durable ware type produced in England for the overseas market, *circa* 1840-1890. It was most popular in southern Ontario from the 1860s until the end of the century. Eighteen sherds of yellowware were also recovered.

A small amount of kitchenware was recovered from the site. The collection contains 105 sherds of coarse red earthenware and 75 sherds of buff earthenware. Coarse red earthenware, also known as redware from the reddish colour of the clay after firing, has a soft, porous body and is often glazed in order to prevent water leakage through the body of the ceramic. The pottery has a smooth, glassy glaze although it is often gritty and flecked. This earthenware crockery was produced in Ontario throughout the nineteenth century, although the popularity of redware waned as stoneware grew in the latter part of the century (OMCR 1986). Five sherds of refined red earthenware, usually used in teaware, were also recovered. This ware type has a broad range of production. Two fragments of stoneware were also recovered. Stoneware was both manufactured in Ontario and imported from England and the United States. Ontario stoneware potteries began production in the late 1840s, such as the Brantford kiln which began operation in 1849 (Webster 1968).



Overall, the ceramic assemblage largely consists of small fragments (less than 30 mm wide), of which 99 exhibit evidence of being burned. A single sherd of an unidentifiable ware type was recovered.

The absence of creamware and pearlware, the predominance of RWE, and the absence of semi-porcelain suggest a site occupation of *circa* 1830-1890.

As ceramic ware types changed through time, so did ceramic decorative styles. An examination of decorative motifs present among the refined wares allows for a finer focus of the Gribbin site ceramic assemblage (Table 4; Plates 5-8). Over half (n=583, or 56.0%) of the ceramic sherds are undecorated, and another 45 sherds exhibit decorative types that could not be identified due to the fragmentary nature of the sherd, thermal alteration, or deterioration of the glaze. Taken together, the ceramic ware types and decorative motifs present suggest an occupation date of *circa* 1830-1890 for the site.

Table 4: Gribbin Site (BdGw-49) Historical Ceramic Counts by Datable Decorative Style

Decorative Style		Date Range*	Total	Percentage
Edgeware	Chicken claw (blue)	1840s-1850s	14	1.3
	Scalloped (blue)	1830s-1850s	2	0.2
	General (blue)	1830s-1870s	3	0.3
Factory slipped	Banded	1830s-1890s	8	0.8
Hand-painted	Late palette	1830s-1870s	41	3.9
Jet ware		1860s-1900s	2	0.2
Moulded	General	1860s-1880s	8	0.8
Rockingham		1855-1890s	2	0.2
Sponged		1840s-1870s	74	7.1
Stamped		1850s-1880s	54	5.2
Transfer printed	Blue	1830s-1870s	33	3.2
	Black	1830s-1850s	1	0.1
	Purple	1830s-1850s	1	0.1
	Teal	1870s-1900s	1	0.1
	Grey (dove)	1850s	2	0.2
	Blue Willow	1830s-1900s	16	1.5
Total (datable decorative styles only)			262	25.2

**In some cases, the dates of the type in Ontario are undefined. In these cases, the manufacture date is given, and marked with an asterisk.*

Glass

Few glass artifacts (n=31) are identified as belonging to the kitchen/food class (Plate 10). Thirty of these sherds are dark olive green liquor container glass, including a fragment exhibiting an oil finish (Cat.#640) and a flat body sherd that is likely part of a case bottle (Cat.#647). A single fragment of an aqua square or rectangular bottle base (Cat.#605) is also present. The base exhibits large bubbles in the glass, reflecting non-machine manufacture.



Metal

No utensil fragments, common on mid-century historical sites, were recovered. However, two fragments of a cast iron cauldron or cooking pot were identified (Plate 11). One fragment exhibits a broad, slightly angled rim (Cat.#765) while the other exhibits a typical bulbous body shape (Cat.#825).

3.3.2 Architectural Class

The architectural class contains 24.5% (n=431) of the total artifacts recovered from the site. Nails account for 23.7% (n=102) of the architectural class. Three types of nails were recovered: hand-wrought (n=3), machine-cut (n=98; Plate 11), and wire (n=1). A single nail of indeterminate manufacture was also identified. In Ontario, machine cut nails were most commonly used from 1830-1900. They replaced hand-wrought nails which were common prior to 1830 (Wells 1998). Wire nails replaced machine cut nails in popularity after 1900. Window glass accounts for 76.3% (n=329) of the architectural remains.

3.3.3 Organic Class

The organic class of artifacts contains 25 mammalian faunal fragments. One faunal element showed evidence of complete and incomplete cuts (Cat. #893). Fourteen of the faunal elements demonstrated evidence of exposure to high heat.

3.3.4 Tools and Equipment

Thirty-six items belonging to the tools/equipment class were recovered at the site—one nearly complete felling axe (Plate 12), one harness buckle, one horseshoe nail, one large stone marble, two screws, five pieces of ferrous strapping, and 25 pieces of iron scrap. This is a fairly typical tools/equipment assemblage and largely reflects activities that were performed in the farm yard rather than inside the home.

3.3.5 Personal Artifacts

The site assemblage contains 39 personal artifacts including items associated with clothing and personal gear (Plate 13). A summary of the buttons collected is presented in Table 5. Table 6 contains a summary of smoking pipe fragments in the assemblage.

The remaining items in the personal artifacts class include a single fragment of aqua glass that was likely part of a medicine container (Cat.#620), a single ferrous shoe eyelet (Cat.#786), and a stamped and gilt brass suspender grip guide (Cat.#719).



Table 5: Buttons, Gribbin Site (BdGw-49)

Cat. #	Qty.	Provenience	Material	Diameter	Description
716	1	495N-200E	Ceramic	16 mm	Prosser
740	1	502N-195E	Ceramic	11 mm	Prosser
704	1	490N-205E	Ceramic	11 mm	Prosser
900	1	495N-200E	Shell	11 mm	
715	1	495N-200E	Ceramic	11 mm	Prosser
735	2	500N-205E	Bone	13 mm	Mending fragment

Table 6: White Ball Clay Smoking Pipes, Gribbin Site (BdGw-49)

Portion	Cat.	Qty.	Provenience	Description	
Bowl	701	1	490N-205E	Fragment. Undecorated.	
	702	1	490N-205E	Spur and bowl base. Undecorated.	
	717	4	495N-200E	Miscellaneous undecorated bowl fragments.	
	727	6	495N-207E	Miscellaneous undecorated bowl fragments.	
	736	2	500N-205E	Miscellaneous undecorated bowl fragments.	
	737	1	500N-205E	Spur and bowl fragment. Linear moulded decoration. Overall motif unidentifiable.	
	746	1	505N-200E	Bowl fragment with moulded large anchor motif	
	750	1	518N-195E	Bowl/stem juncture fragment exhibiting raised and impressed moulded design.	
	Stem	690	1	485N-205E	Impressed mark. "BANNERMAN MONTREAL" (1888-1907)
		691	1	485N-205E	Impressed mark "HENDERSON MONTREAL" (1847-1876)
695		1	484N-210E	Impressed partial mark "GLASGOW"	
703		2	490N-205E	Unmarked	
710		1	490N-195E	Unmarked	
718		2	495N-200E	Undecorated and unmarked.	
726		2	495N-207E	Undecorated and unmarked stem fragments.	
728		1	495N-207E	Impressed mark "GLASGOW"	
745		1	505N-200E	Undecorated and unmarked.	

3.3.6 Indeterminate Class

The indeterminate class artifacts accounts for 4.4% (n=37) of the historical artifact assemblage. This class consists of artifacts that could not be confidently placed in any of the other classes.

3.4 Documentary Record

The documentation and materials related to this project will be curated by ASI until such a time that arrangements for their ultimate transfer to Her Majesty the Queen in right of Ontario, or other public institution, can be made to the satisfaction of the project owner(s), the Ontario Ministry of Tourism and Culture and Sport, and any other legitimate interest groups (Table 5).



Table 7: Inventory of Documentary and Material Record

Project:	Stage 3 Archaeological Assessment, Gribbin Site (BdGw-49)		
ASI File:	16EA-249	MTCS PIF:	P128-0150-2016
Document/Material	Location	Comments	
Written Field Notes, Annotated Field Maps, GPS Logs, etc.	ASI, 528 Bathurst Street, Toronto, ON M5S 2P9	Stored on ASI network servers	
Field Photography (Digital)	ASI, 528 Bathurst Street, Toronto, ON M5S 2P9	Stored on ASI network servers	
Research/Analysis/Reporting Materials (Various Formats)	ASI, 528 Bathurst Street, Toronto, ON M5S 2P9	Hard copy and/or digital files stored on ASI network servers	
Artifacts	ASI, 528 Bathurst Street, Toronto, ON M5S 2P9	See report and accompanying artifact catalogue(s) for details. All material stored in one standard banker box by class and provenience. Collection will be transferred to one of ASI's secure, off-site storage facilities if deemed necessary.	

4.0 ANALYSIS AND CONCLUSIONS

The interpretation of the significance of the Gribbin site relies in part on the archival research regarding the northern portion of Lot 2, Concession I. The original occupants of this portion of the lot were likely James McAvoy and James Gribbin *circa* 1844. The Gribbin family continued to own the northern 100 acres of the lot, and Richard Gribbin and his family are enumerated as actively farming those 100 acres in 1861. In that year he was listed as a 65 year old Irish Roman Catholic farmer living with his wife Bridget (50), and their children Michael, Henry, Andrew, John, and Ellen in a one storey log house. Sometime before 1868, Richard sold his 100 acres to his son Andrew Gribbin. By the time of the 1871 census, Richard had died, and only Bridget, Andrew, and Michael are listed as living on the lot. Records indicate that Andrew Gribbin retained possession of the land, however it was mortgaged numerous times for a period of 15 years. It was eventually claimed by the North British Canadian Investment Company. It was then sold in 1884 to James Robertson, who later willed it in 1913 to his son Frederick. Therefore, the archival research suggests that the site was likely the homestead of James Gribbin, and later occupied by his brother Richard and Richard's son Andrew until the parcel was claimed due to unpaid mortgages in the early 1880s.

The Stage 3 artifact assemblage recovered from the Gribbin site exhibits a pattern that is common to mid nineteenth-century Euro-Canadian sites in southern Ontario. The assemblage is dominated by kitchen/food artifacts, with significant amounts of architectural items (reflecting the construction and maintenance of the domestic structure), and smaller amounts of personal items, tools/equipment, and organic remains. Taken together, the ceramic ware types and decorative motifs present suggest an occupation date of *circa* 1830-1890 for the Gribbin site. The predominance of machine-cut nails also supports this conclusion. While not particularly temporally precise, artifacts such as white ball clay smoking pipes also suggest a mid-to-late-century occupation. This occupation range is consistent with the archival record and supports the conclusion that the occupation of the site may have begun in the 1840s and continued until the 1880s, when the parcel left the possession of the Gribbin family.

The Gribbin site has cultural heritage value in accordance with Sub-section 3.4, Standard 1(g) of the S & G. This site must therefore be subject to Stage 4 Mitigation of Development Impacts. It is understood that avoidance and protection is the preferred option for the mitigation of impacts to an archaeological site. Discussions with the County of Simcoe demonstrate that they are willing to protect the site from further impacts. The proponent's engineering team has created a new alternative impact footprint for the Simcoe Environmental Resource Recovery Centre that avoids the Gribbin site



altogether. Given the relatively compact size and location of the site, and the fact that the County already owns the property, the Gribbin site (BdGw-49) is an excellent candidate to be subject to a Stage 4 Avoidance and Protection strategy.

The County of Simcoe is actively participating in the process to protect the site permanently. The County is working with the Township of Springwater to determine an appropriate Condition of Site Plan Approval relating to the protection of the Gribbin site and its protective buffer to ensure that the archaeological site is protected on a long-term basis.

5.0 RECOMMENDATIONS

In light of these results, ASI makes the following recommendations:

1. The Gribbin site (BdGw-49) represents a mid-nineteenth century Euro-Canadian archaeological resource with cultural heritage value or interest. Given that this site is located on a section of the County of Simcoe's property that will not be impacted by the Environmental Resource Recovery Centre, it has been determined that avoidance and long-term protection is the preferred approach to the Stage 4 mitigation of impacts.

We offer the following strategy to ensure that the site is avoided and protected during construction of the Environmental Resource Recovery Centre.

- a. *The proponent's engineer must provide a letter and documentation detailing their support of the long term protection and avoidance strategy.*

A letter from Simcoe County addressing their support for long term protection and avoidance of the Gribbin Site is included in the Supplementary Documentation Report.

- b. *Appropriate avoidance and protection measures must be established to protect the site from any impacts related to the construction and installation of the Environmental Resource Recovery Centre.*

A conceptual site plan showing the location and extent of the Gribbin site (BdGw-49) and 10 metre buffer area or no-go zone as defined in S & G Section 4.1 Standard 2 b is included in the Supplementary Documentation report.

A buffer of 10 m has been established around the Gribbin site (BdGw-49) as a no-go zone for any construction activity.

No construction activity is anticipated to occur within approximately 85 metres of the protected site area. To ensure that the site is protected from any inadvertent impacts, the following detailed avoidance strategy has been committed to by the Proponent (see letter provided in Supplementary Documentation report) and will remain in place until the project construction is finished and the required Stage 4 avoidance and protection process for the Gribbin site (BdGw-49) has been completed:

- i. Prior to any construction activity in the vicinity, temporary fencing or a similar barrier will be erected around the site and its 10 m protective buffer within the Project lands to define the no-go area.



- ii. written and verbal instructions will be provided to all on site construction personnel working within the Project lands to avoid the location of the site and its protective 10 m buffer;
 - iii. the location of the area to be avoided will be included on all relevant contract drawings, including explicit instructions to avoid that area, when applicable;
 - iv. any construction activity that is undertaken adjacent to the Gribbin site and the 10 m buffer, including the installation of fencing, will be monitored by a licensed archaeologist who will be empowered to stop construction if there is concern the archaeological site is being impacted.
 - v. Once the project construction is complete ASI will inspect and report to MTCS on the effectiveness of the above strategy to avoid and protect the Gribbin site (BdGw-49).
2. To support the long-term protection of the Gribbin site (BdGw-49) and its 10 m protective buffer we recommend that Simcoe County put in place a condition of site plan approval to ensure the archaeological site is protected on a long-term basis. Further, Simcoe County must ensure that the following conditions will be met:
 - a. The condition of site plan approval put in place by Simcoe County must clearly set out how the protection of the Gribbin site is to be addressed in the future, including the definition of steps for further protection or excavation by a licensed archaeologist;
 - b. The allowable uses for the protected site area must be defined and shall not include any activities that involve even minor forms of soil disturbance, such as minor landscaping, and tree removal;
 - c. Simcoe County must provide documentation confirming their awareness of their obligations for the protection of the Gribbin site and their willingness and capacity to fulfill those obligations.

Documents from Simcoe County supporting the long-term protection of the Gribbin site are located in Supplementary Documentation - Site Location & Avoidance and Protection Strategy, Appendix B;

NOTWITHSTANDING the results and recommendations presented in this study, ASI notes that no archaeological assessment, no matter how thorough or carefully completed, can necessarily predict, account for, or identify every form of isolated or deeply buried archaeological deposit. In the event that archaeological remains are found during subsequent construction activities, the consultant archaeologist, approval authority, and the Cultural Programs Unit of the Ministry of Tourism Culture and Sport should be immediately notified.

The above recommendations are subject to Ministry approval and it is an offence to alter any archaeological site without Ministry of Tourism, Culture and Sport concurrence. No grading or other activities that may result in the destruction or disturbance of any archaeological sites are permitted until notice of MTCS approval has been received.



6.0 LEGISLATION COMPLIANCE ADVICE

ASI advises compliance with the following legislation:

- This report is submitted to the Minister of Tourism and Culture and Sport as a condition of licensing in accordance with Part VI of the Ontario Heritage Act, RSO 2005, c 0.18. The report is reviewed to ensure that it complies with the standards and guidelines that are issued by the Minister, and that the archaeological field work and report recommendations ensure the conservation, preservation and protection of the cultural heritage of Ontario. When all matters relating to archaeological sites within the project area of a development proposal have been addressed to the satisfaction of the Ministry of Tourism and Culture and Sport, a letter will be issued by the ministry stating that there are no further concerns with regard to alterations to archaeological sites by the proposed development.
- It is an offence under Sections 48 and 69 of the Ontario Heritage Act for any party other than a licensed archaeologist to make any alteration to a known archaeological site or to remove any artifact or other physical evidence of past human use or activity from the site, until such time as a licensed archaeologist has completed archaeological field work on the site, submitted a report to the Minister stating that the site has no further cultural heritage value or interest, and the report has been filed in the Ontario Public Register of Archaeology Reports referred to in Section 65.1 of the Ontario Heritage Act.
- Should previously undocumented archaeological resources be discovered, they may be a new archaeological site and therefore subject to Section 48 (1) of the Ontario Heritage Act. The proponent or person discovering the archaeological resources must cease alteration of the site immediately and engage a licensed consultant archaeologist to carry out archaeological fieldwork, in compliance with sec. 48 (1) of the Ontario Heritage Act.
- The Cemeteries Act, R.S.O 1990 c. C.4 and the Funeral, Burial and Cremation Services Act, 2002, S.O. 2002. c.33 (when proclaimed in force) require that any person discovering human remains must immediately notify the police or coroner and the Registrar of Cemeteries, Ministry of Consumer Services.
- Archaeological sites recommended for further archaeological field work or protection remain subject to Section 48(1) of the Ontario Heritage Act and may not be altered, nor may artifacts be removed from them, except by a person holding an archaeological license.



7.0 BIBLIOGRAPHY

ASI

- 2016 Stage 1 & 2 Archaeological Assessment. Simcoe Environmental Resource Recovery Centre, 2976 Horseshoe Valley Road West, Part of Lot 2, Concession 1, Former Township of Flos, County of Simcoe, Township of Springwater, Ontario. [MTCS P094-0198-2016]. Report on file at MTCS, Toronto.

Canadian Parks Service

- 1992 *Classification System for Historical Collections*. National Historic Sites, Canadian Parks Service, Environment Canada, Ottawa.

Kenyon, Ian

- 1980 Some General Notes on 19th Century Ceramics. *Kewa: Newsletter of the London Chapter of the Ontario Archaeological Society* (3).
1995 A History of Ceramic Tableware in Ontario: 1780-1910. Paper presented at Table Talks Lecture Series, Montgomery's Inn, Toronto.

MacDonald, E.

- 1997 The Root of the Scatter: Nineteenth Century Artifact and Settlement Patterns in Rural Ontario. *Ontario Archaeology* 64:56-80.

Majewski, T. and M. J. O'Brien

- 1987 The Use and Misuse of Nineteenth-Century English and American Ceramics. In *Archaeological Analysis: Advances in Archaeological Method and Theory*, Volume II, edited by M. B. Schiffer, pp. 97–209. Academic Press, New York.

Mika, N., and H. Mika, eds.

- 1983 *Places in Ontario: Their Name Origins and History, Part III*. (Mika Publishing Co., Belleville, Ontario).

MCL (Ministry of Culture)

- 2005 *Ontario Heritage Act*.

MTC (Ministry of Tourism and Culture)

- 2011 *Standards and Guidelines for Consultant Archaeologists*. Cultural Programs Branch, Ontario Ministry of Tourism and Culture, Toronto.

Ontario Ministry of Culture and Recreation, Archaeology Unit (OMCR)

- 1986 The Consulting Archaeologist and the Analysis of 19th Century Ceramic Tablewares. Paper distributed by the Ministry of Culture and Recreation. Manuscript on file at ASI, Toronto.

South, S.

- 1977 *Method and Theory in Historical Archaeology*. Academic Press, New York.



Walton, G.

1837 *The City of Toronto and Home District Commercial Directory*. Dalton and Coates,
Toronto.

Wells, T.

1998 Nail Chronology: The Use of Technologically Derived Features. *Historical Archaeology*
32(2): 78-99.



8.0 IMAGES



Plate 1: Setting in the grid over the site area, looking northwest.



Plate 2: Recording GPS coordinates, looking east.



Plate 3: Text unit excavation, looking north.

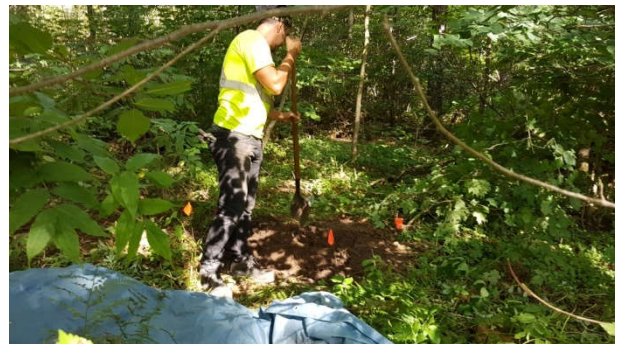


Plate 4: Test unit excavation, looking west.



Plate 5: Typical test unit soil profile, 510N-195E, south wall.



Plate 6: Miscellaneous decorated RWE sherds.

From left: factory slipped (Cat.#331); hand painted, late palette (Cat.#315); chicken claw edgeware (Cat.#332).



Plate 7: Stamped and sponged RWE sherds.
From left: dark blue sponged saucer rim sherd (Cat.#318); light blue sponged rim sherd (Cat.#327); red and blue sponged hollowware (Cat.#235); stamped sherds (Cat.#234).



Plate 8: Printed RWE sherds.
From left: Unidentified light blue prints (Cat.#319); blue Willow pattern sherds (Cat.#222).



Plate 9: Miscellaneous kitchenware.
From left: Grey glazed buff earthenware rim sherd (Cat.#309); tan glazed redware (Cat.#314); blue slipped refind redware (Cat.#313); yellowware sherd (Cat.#307).



Plate 10: Miscellaneous glass.
From left: Aqua glass, wide applied finish (Cat.#569); aqua blown case bottle base fragment (Cat.#605); oil finish olive green liquor container glass (Cat.#640).



Plate 11: Ferrous metal artifacts.
From left: Burned machine cut nails (Cat.#842);
cooking pot fragment (Cat.#765); large, complete
machine cut nail (Cat.#862).



Plate 12: Partial felling axe (Cat.#760).

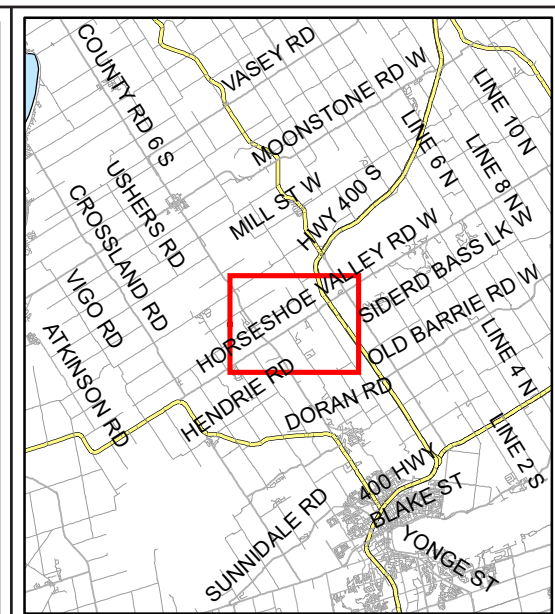
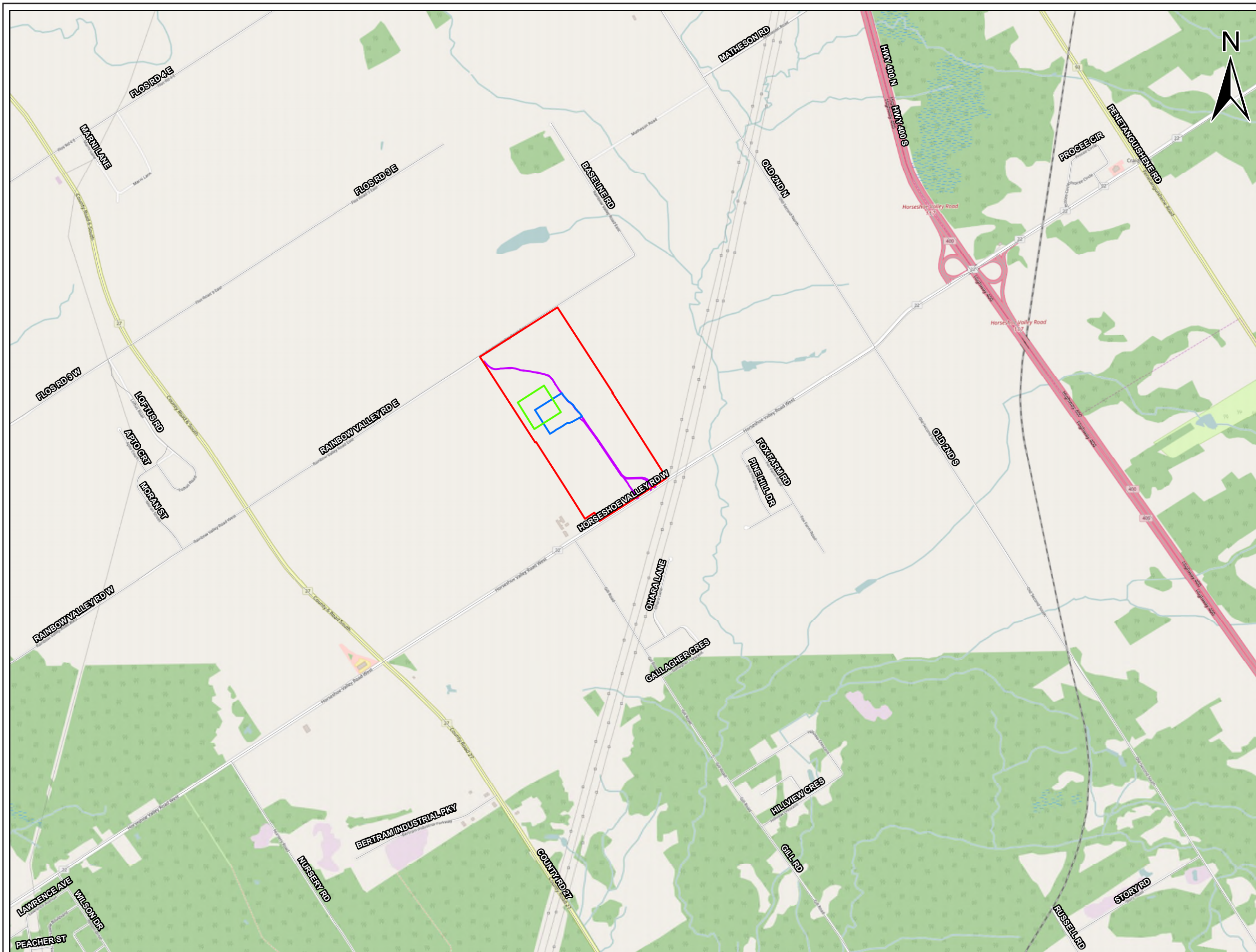


Plate 13: Personal class artifacts.
Top (from left): stone marble (Cat.#700); 16 mm
Prosser button (Cat.#716). Bottom (from left): gilt
brass suspender grip guide (Cat.#719); 11 mm
Prosser button (Cat.#715); BANNERMAN pipe stem
(Cat.#690).

9.0 MAP

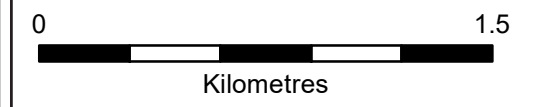
See following page for detailed assessment maps.






- Property Boundary
- Original Facility Footprint
- Revised Facility Footprint
- Access Road

BASE:
 (c) OpenStreetMap and contributors,
 Creative Commons-Share Alike
 License (CC-BY-SA)

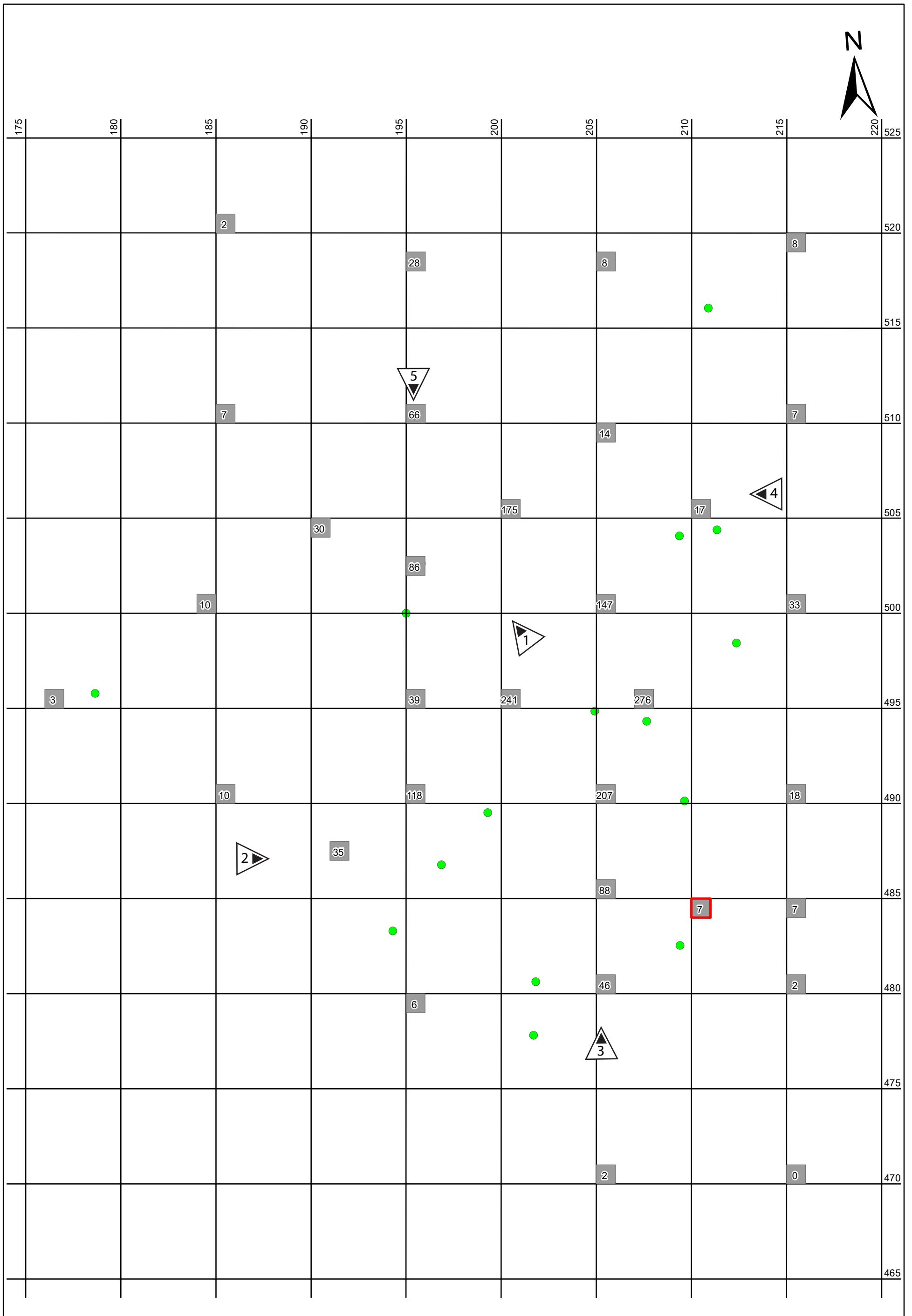


ASI PROJECT NO.: 16TS-025 DRAWN BY: JF
 DATE: 11/10/2016 FILE: 16EA136_fig1_v3



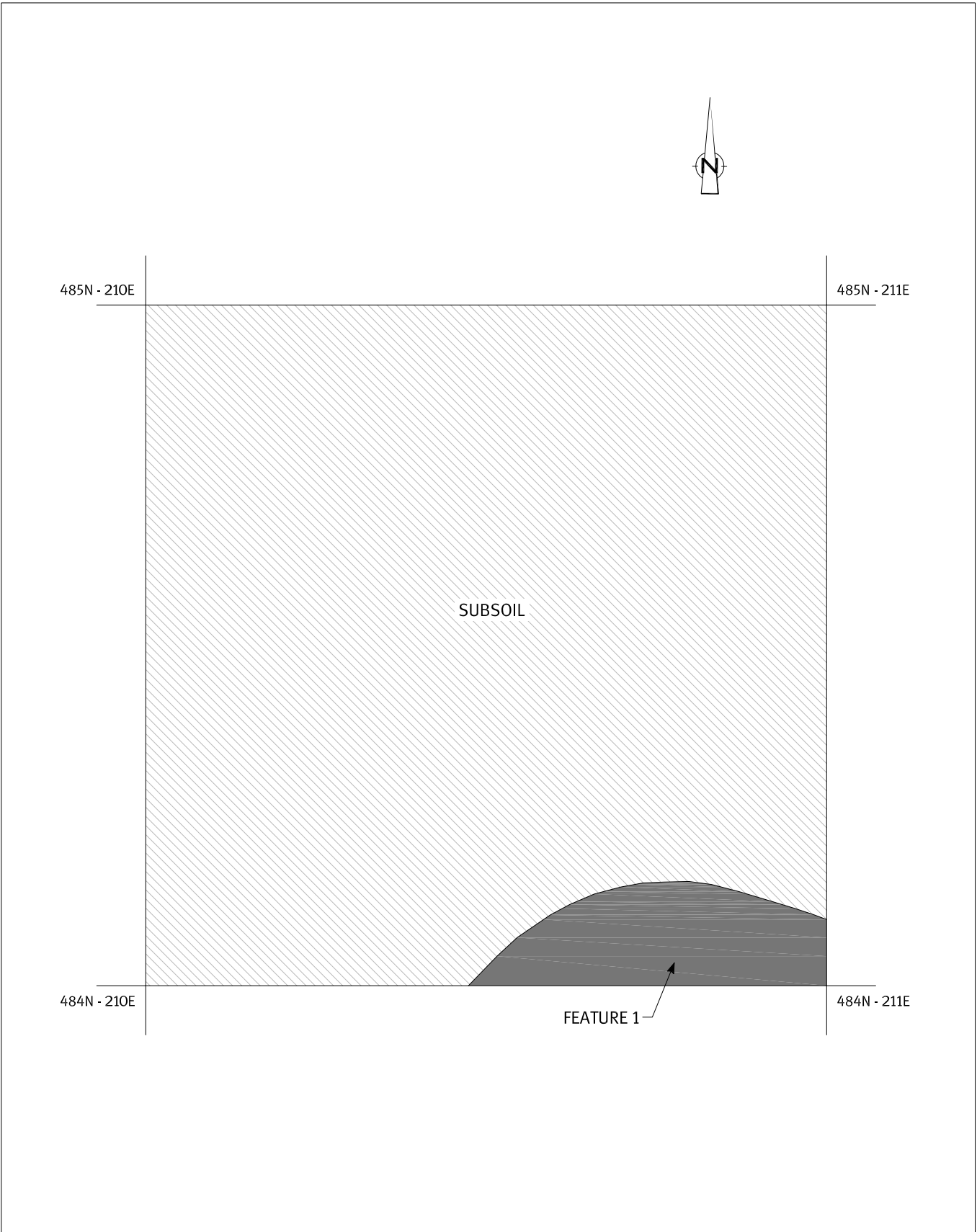
Archaeological & Cultural Heritage Services
 528 Bathurst Street Toronto, ONTARIO M5S 2P9
 416-966-1069 | F416-966-9723 | asiheritage.ca

Figure 1: Study Area Location

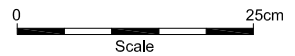


- Stage 3 Unit and Yield
- Positive Stage 2 Test Pit
- Stage 3 Unit and Yield, Feature Present
- Photo number and location

Figure 2: Results of the Stage 3 Assessment and Location of Positive Stage 2 Test Pits.



Archaeological & Cultural Heritage Services
 528 Bathurst Street Toronto, ONTARIO M5S 2P9
 416-966-1069 | F 416-966-9723 | asiheritage.ca



ASI PROJECT NO.: 16EA-249
 DATE: October 11, 2016

DRAWN BY: A.C.
 FILE: 16EA-249 Feature 1

Figure 3: Plan view of Feature, Gribbin Site (BdGw-49)

APPENDIX A



APPENDIX A1: Stage 3 Non-Ceramic Inventory
The Gribbin Site (BdGw-49)

Cat#	Qty	Type	Material	Comments
Unit 479N-195E				
Topsoil				
520	1	Window Glass	Glass	
<i>Topsoil Sub-Total: 1</i>				
<i>Unit Sub-Total: 1</i>				
Unit 480N-205E				
Topsoil				
525	1	Container - Unidentifiable	Glass	Colour: Aqua
526	8	Window Glass	Glass	Colour: Aqua
527	15	Window Glass	Glass	Colour: Colourless
775	1	Nail - Machine Cut	Metal - Ferrous	
776	1	Scrap	Metal - Ferrous	
<i>Topsoil Sub-Total: 26</i>				
<i>Unit Sub-Total: 26</i>				
Unit 480N-215E				
Topsoil				
780	1	Strapping	Metal - Ferrous	
781	1	Unidentified	Metal - Ferrous	Shoe heel-shaped piece of cast iron. No attachment points present. Heavy. Seems unlikely to be part of a shoe.
<i>Topsoil Sub-Total: 2</i>				
<i>Unit Sub-Total: 2</i>				
Unit 484N-210E				
Topsoil				
530	4	Unidentified	Glass	Colour: Colourless
695	1	Smoking Pipe	White Ball Clay	Impressed partial mark "GLASGOW"
890	1	Faunal - Mammal	Bone	Tooth fragment
<i>Topsoil Sub-Total: 6</i>				
<i>Unit Sub-Total: 6</i>				
Unit 485N-205E				
Topsoil				
535	1	Container - Unidentifiable	Glass	Wide prescription finish; small diameter; Colour: Aqua; Lip: Prescription Lip

APPENDIX A1: Stage 3 Non-Ceramic Inventory
The Gribbin Site (BdGw-49)

Cat#	Qty	Type	Material	Comments
536	1	Container - Unidentifiable	Glass	Colour: Aqua
537	1	Container - Liquor	Glass	Colour: Dark Olive Green
538	1	Unidentified	Glass	Thin walled vessel.; Colour: Colourless
539	1	Container - Unidentifiable	Glass	Colour: Green
540	9	Window Glass	Glass	Colour: Colourless
541	1	Unidentified	Glass	Colour: Aqua
542	3	Container - Unidentifiable	Glass	Colour: Aqua
690	1	Smoking Pipe	White Ball Clay	Impressed mark. Bannerman Montreal
691	1	Smoking Pipe	White Ball Clay	Henderson; Montreal
785	1	Scrap	Metal - Ferrous	
786	1	eyelet	Metal - Ferrous	
787	3	Nail - Machine Cut	Metal - Ferrous	
788	2	Nail - Machine Cut	Metal - Ferrous	
789	1	Nail - Machine Cut	Metal - Ferrous	
885	1	Faunal - Mammal	Bone	
886	1	Faunal - Mammal	Bone	

Topsoil Sub-Total: 30

Unit Sub-Total: 30

Unit 487N-191E

Topsoil

545	3	Window Glass	Glass	Colour: Colourless
795	1	Nail - Machine Cut	Metal - Ferrous	
895	1	Faunal - Mammal	Bone	Tooth fragment

Topsoil Sub-Total: 5

Unit Sub-Total: 5

Unit 490N-185E

Topsoil

550	2	Window Glass	Glass	Colour: Colourless
800	1	Nail - Machine Cut	Metal - Ferrous	
801	1	Unidentified	Metal - Ferrous	Possibly sheared-off top of a bolt or other similar fastener.

Topsoil Sub-Total: 4

Unit Sub-Total: 4

APPENDIX A1: Stage 3 Non-Ceramic Inventory
The Gribbin Site (BdGw-49)

Cat#	Qty	Type	Material	Comments
Unit 490N-195E				
Topsoil				
555	1	Container - Unidentifiable	Glass	Small diameter.; Colour: Aqua
556	1	Unidentified	Glass	Thick; heavy. May be portion of tumbler or table vessel.; Colour: Colourless
557	7	Window Glass	Glass	Colour: Colourless
558	1	Unidentified	Glass	Colour: Aqua
559	1	Unidentified	Glass	Curved.; Colour: Colourless
710	1	Smoking Pipe	White Ball Clay	Unmarked.
805	2	Nail - Machine Cut	Metal - Ferrous	
806	1	Nail - Machine Cut	Metal - Ferrous	
807	2	Nail - Machine Cut	Metal - Ferrous	
808	1	Nail - Machine Cut	Metal - Ferrous	
<i>Topsoil Sub-Total: 18</i>				
<i>Unit Sub-Total: 18</i>				
Unit 490N-205E				
Topsoil				
565	1	Container - Unidentifiable	Glass	Colour: Amber
566	11	Window Glass	Glass	Colour: Colourless
567	14	Container - Unidentifiable	Glass	Colour: Aqua
568	2	Container - Liquor	Glass	Colour: Dark Olive Green
569	1	Container - Unidentifiable	Glass	Lip is similar to a capseat; but does not have the internal ledge. Wide and flat; but not deep. Notrolled or folded; it is applied.; Colour: Colourless; Lip: Flat
570	2	Unidentified	Glass	Colour: Aqua
571	1	Container - Unidentifiable	Glass	Colour: Aqua
700	1	Marble	Stone	Large; not a perfect sphere.
701	1	Smoking Pipe	White Ball Clay	Fragment. Undecorated.
702	1	Smoking Pipe	White Ball Clay	Spur and bowl base. Undecorated.
703	2	Smoking Pipe	White Ball Clay	unmarked.
704	1	Button	Ceramic	Prosser.; Flat Disks; Ceramic; Diameter: 11 mm
810	1	Horse Shoe Nail	Metal - Ferrous	End clipped.
811	1	Unidentified	Metal - Ferrous	Cast iron; curved.
812	2	Scrap	Metal - Ferrous	
813	6	Nail - Machine Cut	Metal - Ferrous	
814	1	Nail - Machine Cut	Metal - Ferrous	
815	5	Nail - Machine Cut	Metal - Ferrous	
816	2	Nail - Machine Cut	Metal - Ferrous	

APPENDIX A1: Stage 3 Non-Ceramic Inventory
The Gribbin Site (BdGw-49)

Cat#	Qty	Type	Material	Comments
890	4	Faunal - Mammal	Bone	Calcined fragments
891	3	Faunal - Mammal	Bone	
892	1	Faunal - Mammal	Bone	Tooth fragment
893	1	Faunal - Mammal	Bone	
894	1	Faunal - Mammal	Bone	
<i>Topsoil Sub-Total: 66</i>				
<i>Unit Sub-Total: 66</i>				
Unit 490N-215E				
Topsoil				
575	2	Window Glass	Glass	Colour: Colourless
820	3	Scrap	Metal - Ferrous	
<i>Topsoil Sub-Total: 5</i>				
<i>Unit Sub-Total: 5</i>				
Unit 495N-195E				
Topsoil				
580	2	Container - Liquor	Glass	Colour: Dark Olive Green
581	1	Container - Unidentifiable	Glass	Colour: Aqua
582	8	Window Glass	Glass	Colour: Colourless
825	1	cooking pot	Metal - Ferrous	Likely another portion of the cast iron cooking pot
826	1	Nail - Machine Cut	Metal - Ferrous	
827	1	Nail - Machine Cut	Metal - Ferrous	Heavily corroded.
<i>Topsoil Sub-Total: 14</i>				
<i>Unit Sub-Total: 14</i>				
Unit 495N-200E				
Topsoil				
297	1	Unidentified	Porcelain	
585	2	Container - Liquor	Glass	Colour: Dark Olive Green
586	1	Container - Liquor	Glass	Colour: Dark Olive Green
587	1	Unidentified	Glass	Glass appears to be coated in a metal wash of some sort. Too heavy to be patination.
588	1	Unidentified	Glass	Colour: Colourless
589	1	Unidentified	Glass	Slightly curved; Colour: Aqua
590	2	Container - Liquor	Glass	Colour: Dark Olive Green
591	1	Unidentified	Glass	Colour: Colourless
592	7	Container - Unidentifiable	Glass	Colour: Aqua

APPENDIX A1: Stage 3 Non-Ceramic Inventory
The Gribbin Site (BdGw-49)

Cat#	Qty	Type	Material	Comments
593	6	Container - Unidentifiable	Glass	Thin-walled vessel; Colour: Light Aqua
594	64	Window Glass	Glass	Colour: Aqua
595	1	Unidentified	Glass	Colour: Green
715	1	Button	Ceramic	Prosser.; Flat Disks; Ceramic; Diameter: 11 mm
716	1	Button	Ceramic	Prosser.; Flat Disks; Ceramic; Diameter: 16 mm
717	4	Smoking Pipe	White Ball Clay	Miscellaneous undecorated bowl fragments.
718	2	Smoking Pipe	White Ball Clay	Undecorated and unmarked.
719	1	suspender grip guide	Brass	Decorated gilt brass buckle with stamped design
830	1	Unidentified	Metal - Ferrous	Round vessel; flat base. Unidentified function. Cast iron.
831	4	Scrap	Metal - Ferrous	
832	1	Screw	Metal - Ferrous	
833	1	Harness Component	Metal - Ferrous	
834	1	Nail - Hand-Wrought	Metal - Ferrous	
835	9	Nail - Machine Cut	Metal - Ferrous	
836	8	Nail - Machine Cut	Metal - Ferrous	
837	4	Nail - Machine Cut	Metal - Ferrous	
900	1	Button	Shell	Flat Disks; Shell; Diameter: 11 mm
901	1	Faunal - Mammal	Bone	Tooth fragment
902	1	Faunal - Mammal	Bone	Small fragment
903	1	Faunal - Mammal	Bone	

Topsoil Sub-Total: 130

Unit Sub-Total: 130

Unit 495N-207E

Topsoil

600	1	Container - Liquor	Glass	Colour: Dark Olive Green
601	1	Container - Unidentifiable	Glass	May be moulded. Seems to have a raised ridge along one portion; Colour: Colourless
602	1	Unidentified	Glass	Thick; Colour: Colourless
603	5	Container - Liquor	Glass	Colour: Dark Olive Green
604	1	Unidentified	Glass	Thick; amethyst tint.; Colour: Solarized
605	1	Container - unidentified	Glass	Square or rectangular bottle; blown in the mold (no seams present; mold type unidentifiable); largebubbles in glass. No pontil (further evidence of mold). Small dome at base (kick).; Colour: Aqua; Manufacture: Mouth Blown
606	2	Unidentified	Glass	Light green; flat sided; thick walled. Possibly parts of a case bottle.; Colour: Aqua
607	26	Window Glass	Glass	
608	1	Container - Unidentifiable	Glass	Patinated. Possible mold seam.; Colour: Aqua
609	3	Container - Unidentifiable	Glass	Dark aqua; Colour: Aqua

APPENDIX A1: Stage 3 Non-Ceramic Inventory
The Gribbin Site (BdGw-49)

Cat#	Qty	Type	Material	Comments
610	1	Container - Unidentifiable	Glass	Likely molded; no air bubbles in glass. Small diameter bottle with significant kickup on base.; Colour: Amber
611	3	Container - Unidentifiable	Glass	Colour: Aqua
612	2	window glass	Glass	Colour: Colourless
613	4	Container - Unidentifiable	Glass	Thin bodied; Colour: Aqua
725	1	Unidentified	Unidentifiable	Unidentifiable black material of unknown function
726	2	Smoking Pipe	White Ball Clay	Undecorated and unmarked stem fragments.
727	6	Smoking Pipe	White Ball Clay	Miscellaneous undecorated bowl fragments.
728	1	Smoking Pipe	White Ball Clay	Marked "GLASGOW"
840	1	Screw	Metal - Ferrous	
841	3	Scrap	Metal - Ferrous	
842	4	Nail - Machine Cut	Metal - Ferrous	
843	4	Nail - Machine Cut	Metal - Ferrous	
844	4	Nail - Machine Cut	Metal - Ferrous	
905	2	Faunal - Mammal	Bone	Small calcined fragments
906	3	Faunal - Mammal	Bone	
910	1	Faunal - Mammal	Bone	Small calcined fragment

Topsoil Sub-Total: 84

Unit Sub-Total: 84

Unit 500N-184E

Topsoil

615	4	Window Glass	Glass	Colour: Aqua
850	1	Nail - Machine Cut	Metal - Ferrous	
851	1	Nail - Machine Cut	Metal - Ferrous	

Topsoil Sub-Total: 6

Unit Sub-Total: 6

Unit 500N-205E

Topsoil

620	1	Container - Medicine	Glass	Colour: Aqua; Lip: Patent Lip
621	4	Container - Unidentifiable	Glass	Patinated.; Colour: Aqua
622	16	Window Glass	Glass	Colour: Aqua
623	3	Container - Liquor	Glass	Colour: Dark Olive Green
624	5	Container - Unidentifiable	Glass	Colour: Light Aqua
625	1	Unidentified	Glass	Colour: Aqua
626	1	Container - Unidentifiable	Glass	Colour: Aqua

APPENDIX A1: Stage 3 Non-Ceramic Inventory

The Gribbin Site (BdGw-49)

Cat#	Qty	Type	Material	Comments
735	2	Button	Bone	Two fragments that mend to form a complete button.; Flat Disks; Bone; Diameter: 13 mm
736	2	Smoking Pipe	White Ball Clay	Miscellaneous undecorated bowl fragments.
737	1	Smoking Pipe	White Ball Clay	Spur and bowl fragment. Linear moulded decoration. Overall motif unidentifiable.
860	4	Strapping	Metal - Ferrous	
861	2	Nail - Machine Cut	Metal - Ferrous	
862	1	Nail - Machine Cut	Metal - Ferrous	Unusually complete and long nail.
863	8	Nail - Machine Cut	Metal - Ferrous	
864	2	Nail - Machine Cut	Metal - Ferrous	
<i>Topsoil Sub-Total: 53</i>				
<i>Unit Sub-Total: 53</i>				
Unit 500N-215E				
Topsoil				
630	2	Window Glass	Glass	Colour: Aqua
631	1	Container - Unidentifiable	Glass	Colour: Amber
632	1	Unidentified	Glass	Colour: Colourless
855	4	Scrap	Metal - Ferrous	
856	1	Nail - Machine Cut	Metal - Ferrous	
857	1	Nail - Machine Cut	Metal - Ferrous	
<i>Topsoil Sub-Total: 10</i>				
<i>Unit Sub-Total: 10</i>				
Unit 502N-195E				
Topsoil				
635	6	Container - Unidentifiable	Glass	Colour: Aqua
636	8	Container - Liquor	Glass	Colour: Dark Olive Green
637	51	Window Glass	Glass	Colour: Colourless
740	1	Button	Ceramic	Prosser.; Flat Disk Convex Backs; Ceramic; Diameter: 11 mm
760	1	axe head	Metal - Ferrous	Single bit axe head. Blade (cheek) and most of the hafting portion of a felling axe.
761	1	Nail - Machine Cut	Metal - Ferrous	
762	1	Nail - Wire	Metal - Ferrous	
<i>Topsoil Sub-Total: 69</i>				
<i>Unit Sub-Total: 69</i>				
Unit 504N-190E				
Topsoil				
640	1	Container - Liquor	Glass	Oil/ring finish common to wine bottles; Colour: Dark Olive Green

APPENDIX A1: Stage 3 Non-Ceramic Inventory
The Gribbin Site (BdGw-49)

Cat#	Qty	Type	Material	Comments
641	7	Window Glass	Glass	Colour: Colourless
642	2	Container - Unidentifiable	Glass	Colour: Aqua

Topsoil Sub-Total: 10

Unit Sub-Total: 10

Unit 505N-200E

Topsoil

645	54	Window Glass	Glass	Colour: Colourless
646	1	Container - Unidentifiable	Glass	Heavily patinated; thick glass; Colour: Aqua
647	1	Container - Liquor	Glass	Flat fragment; likely from a case bottle; Colour: Dark Olive Green
648	1	Unidentified	Glass	Colour: Aqua
649	8	Container - Unidentifiable	Glass	Colour: Aqua
745	1	Smoking Pipe	White Ball Clay	Undecorated and unmarked.
746	1	Smoking Pipe	White Ball Clay	Bowl fragment with moulded large anchor motif
765	1	cooking pot	Metal - Ferrous	Rim and body of cauldron-like vessel; bulbous body. Cast iron.
766	7	Scrap	Metal - Ferrous	Miscellaneous pieces
767	5	Nail - Machine Cut	Metal - Ferrous	
768	2	Nail - Machine Cut	Metal - Ferrous	
769	2	Nail - Hand-Wrought	Metal - Ferrous	
915	1	Faunal - Mammal	Bone	Tooth fragment

Topsoil Sub-Total: 85

Unit Sub-Total: 85

Unit 505N-210E

Topsoil

655	1	Container - Unidentifiable	Glass	Colour: Aqua
656	1	Container - Unidentifiable	Glass	Colour: Colourless
920	1	Faunal - Mammal	Bone	Tooth fragment.

Topsoil Sub-Total: 3

Unit Sub-Total: 3

Unit 509N-205E

Topsoil

660	1	Container - Unidentifiable	Glass	Colour: Aqua
661	1	Window Glass	Glass	Colour: Colourless
870	1	Nail - Machine Cut	Metal - Ferrous	

APPENDIX A1: Stage 3 Non-Ceramic Inventory
The Gribbin Site (BdGw-49)

Cat#	Qty	Type	Material	Comments
<i>Topsoil Sub-Total: 3</i>				
<i>Unit Sub-Total: 3</i>				
Unit 510N-185E				
Topsoil				
665	1	Container - Unidentifiable	Glass	Not modern green.; Colour: Green
666	1	Window Glass	Glass	Colour: Aqua
667	1	Window Glass	Glass	Colour: Colourless
<i>Topsoil Sub-Total: 3</i>				
<i>Unit Sub-Total: 3</i>				
Unit 510N-195E				
Topsoil				
670	1	Container - Unidentifiable	Glass	Not modern green. Thin.; Colour: Green
671	28	Window Glass	Glass	Colour: Colourless
672	1	Container - Unidentifiable	Glass	Flat-bodied vessel; chamfered corners.; Colour: Aqua
673	1	Container - Unidentifiable	Glass	Round bottle; small diameter. Circular; flat pontil scar on base.; Colour: Aqua
875	1	Unidentified	Metal - Ferrous	Heavy; likely cast.
876	1	Nail - Machine Cut	Metal - Ferrous	
877	5	Nail - Machine Cut	Metal - Ferrous	
<i>Topsoil Sub-Total: 38</i>				
<i>Unit Sub-Total: 38</i>				
Unit 510N-215E				
Topsoil				
675	1	Container - Unidentifiable	Glass	Colour: Aqua
<i>Topsoil Sub-Total: 1</i>				
<i>Unit Sub-Total: 1</i>				
Unit 518N-195E				
Topsoil				
680	5	Window Glass	Glass	Colour: Colourless
681	1	Container - Unidentifiable	Glass	Light green; not modern green; Colour: Green
682	1	Container - Unidentifiable	Glass	Light green; not modern green. Very pronounced vertical seam. Thick glass.; Colour: Green
750	1	Smoking Pipe	White Ball Clay	Bowl/stem juncture fragment exhibiting raised and impressed mouded design.
880	2	Nail - Machine Cut	Metal - Ferrous	

APPENDIX A1: Stage 3 Non-Ceramic Inventory

The Gribbin Site (BdGw-49)

Cat#	Qty	Type	Material	Comments
<i>Topsoil Sub-Total: 10</i>				
<i>Unit Sub-Total: 10</i>				
Unit 519N-215E				
Topsoil				
685	1	Window Glass	Glass	Colour: Colourless
686	1	Container - Liquor	Glass	Colour: Dark Olive Green
<i>Topsoil Sub-Total: 2</i>				
<i>Unit Sub-Total: 2</i>				
<hr/> Grand Total : 684 artifacts <hr/>				

APPENDIX A-2: Stage 3 Ceramic Inventory
The Gribbin Site (BdGw-49)

Cat#	Qty	Ware	Motif	Form	Comments
Unit 470N-205E					
Topsoil					
100	3	RWE	Undecorated	Unidentifiable	Portion: Body
<i>Topsoil Sub-Total: 3</i>					
<i>Unit Sub-Total: 3</i>					
Unit 479N-195E					
Topsoil					
105	2	RWE	Transfer Print - General	Flatware	Portion: Body; Colour: Blue
106	1	RWE	Spongeware	Flatware	Portion: Body; Colour: Dark blue
107	1	RWE	Undecorated	Flatware	
108	1	Ironstone	Undecorated	Flatware	Portion: Body
<i>Topsoil Sub-Total: 5</i>					
<i>Unit Sub-Total: 5</i>					
Unit 480N-205E					
Topsoil					
110	1	Red Earthenware - Coarse	Glazed	Hollowware	Portion: Body; Colour: Dark Brown
111	1	Stoneware	Glazed	Hollowware	Portion: Body; Colour: Grey
112	1	RWE	Factory Slip - Banded	Hollowware	Portion: Body; Colour: Blue
113	3	RWE	Spongeware	Hollowware	Portion: Body; Colour: Blue
114	1	Ironstone	Undecorated	Flatware	
115	10	RWE	Undecorated	Unidentifiable	Portion: Body
116	1	Buff Earthenware	Undecorated	Hollowware	Portion: Base
<i>Topsoil Sub-Total: 18</i>					
<i>Unit Sub-Total: 18</i>					
Unit 484N-210E					
Topsoil					
120	1	RWE	Transfer Print - General	Unidentifiable	Portion: Body; Colour: Blue; Portion of a floral motif
121	1	RWE	Undecorated	Unidentifiable	Portion: Body

APPENDIX A-2: Stage 3 Ceramic Inventory
The Gribbin Site (BdGw-49)

Cat#	Qty	Ware	Motif	Form	Comments
<i>Topsoil Sub-Total: 2</i>					
<i>Unit Sub-Total: 2</i>					
Unit 485N-205E					
Topsoil					
125	1	Yellow Ware	Undecorated	Hollowware	Portion: Body
126	2	Red Earthenware - Coarse	Undecorated	Hollowware	Portion: Body
127	1	Red Earthenware - Coarse	Glazed	Hollowware	Portion: Body; Colour: Dark Brown
128	4	Red Earthenware - Coarse	Glazed	Hollowware	Portion: body; Colour: Brown
129	1	RWE	Edgeware - Evenly Scalloped	Flatware	Portion: Rim; Colour: Blue
130	1	RWE	Stamped	Hollowware	Portion: Rim; Colour: Purple; Purple band below rim with unidentified stamped motif under the band.
131	1	RWE	Transfer Print - General	Unidentifiable	Portion: Body; Colour: Blue
132	1	RWE	Factory Slip - Banded	Hollowware	Portion: Body; Colour: Blue, Brown; Brown annular lines alternating with white; blue field below
133	1	RWE	Spongeware	Hollowware	Portion: Body; Colour: Red, Blue
134	1	RWE	Spongeware	Flatware	Portion: Body; Colour: Blue
135	1	RWE	Hand Painted - Late Palette	Flatware	Portion: Rim; Colour: Red, Green; Red annular line at rim; hint of green floral pattern below
136	1	RWE	Hand Painted - Late Palette	Unidentifiable	Portion: green; Portion of faint; dainty floral pattern
137	1	RWE	Factory Slip - Banded	Hollowware	Portion: Body; Colour: Brown; Brown annular band; narrow.
138	1	Yellow Ware	Rockingham	Unidentifiable	Portion: Body; Colour: Brown
139	1	RWE	Spongeware	Hollowware	Portion: Rim; Colour: Blue
140	2	RWE	Hand Painted - Late Palette	Hollowware	Portion: Body; Colour: Red
141	1	RWE	Factory Slip - Banded	Unidentifiable	Portion: Rim; Colour: Blue
142	2	RWE	Spongeware	Unidentifiable	Portion: Body; Colour: Blue; Coarse blue sponged.
143	1	RWE	Transfer Print - General	Unidentifiable	Portion: Body; Colour: Blue
144	4	RWE	Unidentified	Unidentifiable	Portion: Body; Colour: Blue; Miscellaneous blue decorated sherds.
145	1	RWE	Unidentified	Flatware	Portion: Rim; Colour: Blue
146	1	Ironstone	Undecorated	Hollowware	Portion: Base; Heavy and tall foot ring.
147	1	Ironstone	Undecorated	Flatware	Portion: Body

APPENDIX A-2: Stage 3 Ceramic Inventory
The Gribbin Site (BdGw-49)

Cat#	Qty	Ware	Motif	Form	Comments
148	24	RWE	Undecorated	Unidentifiable	Portion: Body; Miscellaneous undecorated sherds.

Topsoil Sub-Total: 56

Unit Sub-Total: 56

Unit 487N-191E

Topsoil

150	4	Red Earthenware - Coarse	Undecorated	Hollowware	Portion: Body
151	1	Ironstone	Undecorated	Unidentifiable	
152	1	RWE	Undecorated	Unidentifiable	Portion: Base
153	1	RWE	Undecorated	Flatware	Portion: Rim
154	6	RWE	Undecorated	Unidentifiable	Portion: Body; Miscellaneous sherds.
155	1	RWE	Stamped	Unidentifiable	Portion: Body; Colour: Blue; Unidentifiable design motif
156	2	RWE	Unidentified	Unidentifiable	Portion: Body; Colour: Blue; Miscellaneous blue decorated sherds
157	1	RWE	Transfer Print - General	Hollowware	Portion: Body
158	4	RWE	Transfer Print - General	Unidentifiable	Portion: Body; Colour: Blue
159	1	RWE	Transfer Print - Willow Pattern	Unidentifiable	Portion: Body; Colour: Blue
160	1	RWE	Unidentified	Flatware	Portion: Body; Colour: Blue
161	6	Red Earthenware - Coarse	Glazed	Hollowware	Portion: Body; Colour: Brown

Topsoil Sub-Total: 29

Unit Sub-Total: 29

Unit 490N-185E

Topsoil

165	1	RWE	Undecorated	Flatware	Portion: Body
166	1	RWE	Unidentified	Flatware	Portion: Rim; Colour: Blue
167	1	RWE	Edgeware - Evenly Scalloped	Flatware	Portion: Rim; Colour: Blue
168	1	RWE	Unidentified	Unidentifiable	Portion: Body; Colour: Blue
169	1	RWE	Unidentified	Flatware	Portion: Rim; Colour: Blue

Topsoil Sub-Total: 5

APPENDIX A-2: Stage 3 Ceramic Inventory
The Gribbin Site (BdGw-49)

Cat#	Qty	Ware	Motif	Form	Comments
<i>Unit Sub-Total: 5</i>					
Unit 490N-195E					
Topsoil					
170	1	Stoneware	Glazed	Hollowware	Portion: Body; Colour: Grey
171	6	Red Earthenware - Coarse	Glazed	Hollowware	Portion: Body; Colour: Brown
172	1	Red Earthenware - Coarse	Glazed	Hollowware	Portion: Brown; Colour: Dark Brown; Mottled glaze.
173	1	Red Earthenware - Coarse	Glazed	Hollowware	Portion: Body; Colour: Dark Brown
174	1	Red Earthenware - Refined	Slipped	Hollowware	Portion: Body; Colour: Blue, White; White interior slip; blue exterior with possible handle attachment. Likely tea service vessel.
175	1	Red Earthenware - Coarse	Undecorated	Hollowware	Portion: Body
176	2	RWE	Transfer Print - General	Unidentifiable	Portion: Body; Colour: Light Blue
177	1	RWE	Transfer Print - General	Hollowware	Portion: Rim; Colour: Purple
178	1	RWE	Transfer Print - General	Unidentifiable	Portion: Body; Colour: Purple
179	1	RWE	Transfer Print - General	Hollowware	Portion: Rim; Colour: Blue
180	3	RWE	Spongeware	Flatware	Portion: Body; Colour: Blue, Red
181	3	RWE	Spongeware	Hollowware	Portion: Rim; Colour: Red, Blue
182	1	RWE	Spongeware	Unidentifiable	Portion: Base; Colour: Red, Blue
183	1	RWE	Stamped	Hollowware	Portion: Rim; Colour: Purple, Red; Purple stamped motif with red annular band at rim.
184	2	RWE	Edgeware - General	Flatware	Portion: Rim; Colour: Blue
185	1	RWE	Spongeware	Hollowware	Portion: Rim; Colour: Light Blue
186	1	RWE	Spongeware	Flatware	Portion: Rim; Colour: Light Blue
187	1	RWE	Spongeware	Unidentifiable	Portion: Rim; Colour: Red
188	1	RWE	Spongeware	Flatware	Portion: Rim; Colour: Blue; Coarse; open sponging
189	1	RWE	Spongeware	Flatware	Portion: Body; Colour: Blue; Densely sponged
190	1	RWE	Edgeware - Chicken Claw	Flatware	Portion: Rim; Colour: Blue
191	1	RWE	Transfer Print - Willow Pattern	Unidentifiable	Portion: Body; Colour: Blue
192	1	RWE	Spongeware	Flatware	Portion: Body; Colour: Blue
193	1	RWE	Hand Painted - Late Palette	Unidentifiable	Portion: Body; Colour: Red

APPENDIX A-2: Stage 3 Ceramic Inventory

The Gribbin Site (BdGw-49)

Cat#	Qty	Ware	Motif	Form	Comments
194	1	RWE	Stamped	Unidentifiable	Portion: Body; Colour: Blue, Red; Floral motif in stamped; with red hand-painting (just strokes of colour) over the top
195	1	RWE	Spongeware	Hollowware	Portion: Rim; Colour: Blue; Blue annular line at rim with coarse; open sponging motif.
196	2	RWE	Hand Painted - General	Unidentifiable	Portion: Body; Colour: Blue; Possibly the hand-painted portion of a sponged vessel. Blue is similar to blue used in sponging.
197	2	RWE	Spongeware	Unidentifiable	Portion: Body; Colour: Dark Blue
198	1	RWE	Spongeware	Unidentifiable	Portion: Body; Colour: Blue
199	6	RWE	Unidentified	Unidentifiable	Portion: Body; Colour: Blue; Miscellaneous unidentified blue decorated sherds.
200	1	RWE	Unidentified	Flatware	Portion: Rim; Colour: Blue
201	46	RWE	Undecorated	Unidentifiable	Portion: Body; Miscellaneous sherds
202	1	RWE	Spongeware	Unidentifiable	Portion: Base; Colour: Blue, Red

Topsoil Sub-Total: 96

Unit Sub-Total: 96

Unit 490N-205E

Topsoil

205	1	Yellow Ware	Rockingham	Hollowware	Portion: Body; Colour: Brown
206	2	Yellow Ware	Undecorated	Hollowware	Portion: Rim
207	4	Yellow Ware	Undecorated	Hollowware	Portion: Body
208	1	Yellow Ware	Undecorated	Unidentifiable	Portion: Body
209	1	Yellow Ware	Undecorated	Unidentifiable	Portion: Body; Exfoliated.
210	9	Red Earthenware - Coarse	Undecorated	Hollowware	Portion: Body
211	6	RWE	Undecorated	Unidentifiable	Portion: Body
212	2	RWE	Stamped	Flatware	Portion: Body; Colour: Blue
213	4	RWE	Undecorated	Unidentifiable	Portion: Body; Exfoliated
214	1	Red Earthenware - Coarse	Glazed	Hollowware	Portion: Base; Colour: Dark Brown
215	1	Red Earthenware - Refined	Jet Ware	Hollowware	Portion: Body; Colour: Black
216	1	Red Earthenware - Coarse	Glazed	Hollowware	Portion: Body; Colour: Brown
217	1	Red Earthenware - Coarse	Glazed	Hollowware	Portion: Rim; Colour: Dark Brown

APPENDIX A-2: Stage 3 Ceramic Inventory
The Gribbin Site (BdGw-49)

Cat#	Qty	Ware	Motif	Form	Comments
218	5	Red Earthenware - Coarse	Glazed	Hollowware	Portion: Body; Colour: Dark Brown
219	1	RWE	Stamped	Flatware	Portion: Body; Colour: Red; Red stamped circular motif
220	1	RWE	Slipped	Unidentifiable	Portion: Body; Colour: Blue
221	3	RWE	Edgeware - Chicken Claw	Flatware	Portion: Rim; Colour: Blue
222	2	RWE	Transfer Print - Willow Pattern	Flatware	Portion: Body; Colour: Blue
223	1	RWE	Hand Painted - General	Hollowware	Portion: Body; Colour: Blue
224	3	RWE	Spongeware	Hollowware	Portion: Body; Colour: Blue
225	4	RWE	Transfer Print - General	Flatware	Portion: Body; Colour: Blue; Miscellaneous printed sherds.
226	1	RWE	Transfer Print - General	Flatware	Portion: Rim; Colour: Blue
227	3	RWE	Spongeware	Hollowware	Portion: Rim; Colour: Blue
228	1	RWE	Unidentified	Unidentifiable	Portion: Rim; Colour: Blue
229	2	RWE	Unidentified	Unidentifiable	Portion: Body; Colour: Blue
230	1	RWE	Spongeware	Flatware	Portion: Body; Colour: Dark Blue
231	1	RWE	Hand Painted - Late Palette	Hollowware	Portion: Rim; Colour: Brown; Annular brown band at rim
232	1	RWE	Stamped	Hollowware	Portion: Rim; Colour: Red, Purple; Interior exhibits red annular line at rim; exterior exhibits purple stamped motif
233	1	RWE	Stamped	Unidentifiable	Portion: Body; Colour: Purple
234	5	RWE	Stamped	Unidentifiable	Portion: Body; Colour: Purple; Stamped leaf pattern
235	2	RWE	Spongeware	Hollowware	Portion: Body; Colour: Red, Blue
236	1	RWE	Spongeware	Hollowware	Portion: Rim; Colour: Blue; Blue annular line at rim with sponging below
237	1	Ironstone	Moulded - General	Hollowware	Portion: Base
238	1	Ironstone	Moulded - General	Flatware	Portion: Rim
239	6	RWE	Undecorated	Unidentifiable	Portion: Base
240	1	RWE	Undecorated	Unidentifiable	Portion: Body
241	66	RWE	Undecorated	Unidentifiable	Portion: Body
242	1	RWE	Unidentified	Flatware	Portion: Rim; Colour: Blue
243	3	RWE	Spongeware	Unidentifiable	Portion: Body; Colour: Blue; Coarse; open sponge.

Topsoil Sub-Total: 152

Unit Sub-Total: 152

APPENDIX A-2: Stage 3 Ceramic Inventory

The Gribbin Site (BdGw-49)

Cat#	Qty	Ware	Motif	Form	Comments
Unit 490N-215E					
Topsoil					
245	1	Red Earthenware - Coarse	Glazed	Hollowware	Portion: Body; Colour: Dark Brown
246	7	RWE	Undecorated	Unidentifiable	Portion: Body
247	1	RWE	Transfer Print - Willow Pattern	Flatware	Portion: body; Colour: Blue
248	1	RWE	Transfer Print - Willow Pattern	Flatware	Portion: Rim; Colour: Blue
249	3	RWE	Hand Painted - Late Palette	Unidentifiable	Portion: Body; Colour: Red, Green, Blue; Miscellaneous floral motif sherds
250	1	RWE	Spongeware	Hollowware	Portion: Body; Colour: Blue
<i>Topsoil Sub-Total: 14</i>					
<i>Unit Sub-Total: 14</i>					
Unit 495N-176E					
Topsoil					
255	1	RWE	Undecorated	Unidentifiable	Portion: Body; Very small sherd.
256	1	RWE	Spongeware	Flatware	Portion: Rim; Colour: Blue; Heavily sponged with blue annular band at rim.
257	1	RWE	Hand Painted - General	Unidentifiable	Portion: Body; Colour: Blue
<i>Topsoil Sub-Total: 3</i>					
<i>Unit Sub-Total: 3</i>					
Unit 495N-195E					
Topsoil					
260	2	Buff Earthenware	Glazed	Hollowware	Portion: Body; Colour: Grey
261	1	Buff Earthenware	Glazed	Hollowware	Portion: Rim; Colour: Grey
262	12	RWE	Undecorated	Unidentifiable	Portion: Body; Miscellaneous
263	1	Red Earthenware - Coarse	Glazed	Hollowware	Portion: Body; Colour: Dark Brown
264	8	RWE	Spongeware	Hollowware	Portion: Body; Colour: Blue
265	1	RWE	Unidentified	Unidentifiable	Portion: Body; Colour: Red
<i>Topsoil Sub-Total: 25</i>					

APPENDIX A-2: Stage 3 Ceramic Inventory
The Gribbin Site (BdGw-49)

Cat#	Qty	Ware	Motif	Form	Comments
<i>Unit Sub-Total: 25</i>					
Unit 495N-200E					
Topsoil					
270	1	Red Earthenware - Coarse	Glazed	Hollowware	Portion: Rim; Colour: Brown
271	1	Red Earthenware - Refined	Jet Ware	Hollowware	Portion: Body; Colour: Black
272	1	Red Earthenware - Coarse	Glazed	Hollowware	Portion: Body; Colour: Brown
273	1	Red Earthenware - Coarse	Glazed	Hollowware	Portion: Body; Colour: Tan
274	4	Buff Earthenware	Glazed	Hollowware	Portion: Body; Colour: Brown
275	8	Red Earthenware - Coarse	Undecorated	Hollowware	Portion: Body
276	1	RWE	Edgeware - Chicken Claw	Flatware	Portion: Rim; Colour: Blue
277	1	RWE	Stamped	Flatware	Portion: Rim; Colour: Purple, Red; Red annular line with purple stamped motif
278	2	RWE	Transfer Print - General	Flatware	Portion: Body; Colour: Blue
279	3	RWE	Spongeware	Unidentifiable	Portion: Body; Colour: Blue
280	1	RWE	Hand Painted - Late Palette	Unidentifiable	Portion: Body; Colour: Green, Red; Floral pattern; large.
281	1	RWE	Spongeware	Hollowware	Portion: Rim; Colour: Blue
282	1	RWE	Stamped	Flatware	Portion: Rim; Colour: Blue
283	1	RWE	Hand Painted - General	Hollowware	Portion: Body; Colour: Blue; Blue annular bands
284	1	RWE	Stamped	Hollowware	Portion: Rim; Colour: Red, Purple; Red interior annular line at rim; exterior exhibits purple stamped motif
285	5	RWE	Stamped	Hollowware	Portion: Body; Colour: Purple; Leaf motif.
286	1	RWE	Hand Painted - Late Palette	Hollowware	Portion: Body; Colour: Red, Green
287	1	RWE	Hand Painted - Late Palette	Flatware	Portion: Rim; Colour: Green; Delicate floral pattern
288	1	RWE	Transfer Print - Willow Pattern	Flatware	Portion: Body; Colour: Blue
289	3	RWE	Unidentified	Unidentifiable	Portion: Body; Colour: Blue; Miscellaneous blue decoration.
290	1	RWE	Spongeware	Flatware	Portion: Body; Colour: Red, Blue
291	1	RWE	Stamped	Unidentifiable	Portion: Rim; Colour: Purple
292	2	RWE	Spongeware	Unidentifiable	Portion: Body; Colour: Blue; Coarse; open sponging.
293	4	Ironstone	Undecorated	Unidentifiable	Miscellaneous sherds.

APPENDIX A-2: Stage 3 Ceramic Inventory
The Gribbin Site (BdGw-49)

Cat#	Qty	Ware	Motif	Form	Comments
294	1	Ironstone	Moulded - General	Flatware	Portion: Rim
295	1	Ironstone	Undecorated	Flatware	Portion: Rim
296	1	Ironstone	Undecorated	Flatware	Portion: Base
298	1	RWE	Unidentified	Unidentifiable	Portion: Rim; Colour: Blue
299	4	RWE	Undecorated	Flatware	Portion: Body
300	52	RWE	Undecorated	Unidentifiable	Portion: Body

Topsoil Sub-Total: 107

Unit Sub-Total: 107

Unit 495N-207E

Topsoil

305	1	Ironstone	Undecorated	Hollowware	Portion: Body
306	15	Buff Earthenware	Undecorated	Hollowware	Portion: Body
307	3	Yellow Ware	Glazed	Unidentifiable	Portion: Body
308	1	Buff Earthenware	Glazed	Hollowware	Portion: Body; Colour: Brown
309	2	Buff Earthenware	Glazed	Hollowware	Portion: Rim
310	6	Buff Earthenware	Undecorated	Hollowware	Portion: Body
311	8	Red Earthenware - Coarse	Undecorated	Hollowware	Portion: Body
312	4	Red Earthenware - Coarse	Glazed	Hollowware	Portion: Body; Colour: Dark Brown
313	1	Red Earthenware - Refined	Slipped	Hollowware	Portion: Body; Colour: White, Blue; White interior slip; blue exterior slip
314	11	Red Earthenware - Coarse	Glazed	Hollowware	Portion: Body; Colour: Tan
315	8	RWE	Hand Painted - Late Palette	Hollowware	Portion: Body; Colour: Red, Green, Black; Large floral motif
316	2	RWE	Hand Painted - Late Palette	Hollowware	Portion: Base; Colour: Green, Black, Red; Large floral motif
317	1	RWE	Hand Painted - General	Hollowware	Portion: Body; Colour: Brown; Brown annular band
318	1	RWE	Spongeware	Flatware	Portion: Rim; Colour: blue; Very heavily sponged; dark blue.
319	3	RWE	Transfer Print - General	Unidentifiable	Portion: Body; Colour: Blue; Miscellaneous prints.
320	1	RWE	Stamped	Unidentifiable	Portion: Body; Colour: Red; Miscellaneous prints.
321	2	RWE	Hand Painted - Late Palette	Saucer	Portion: Rim; Colour: Red, Blue
322	6	RWE	Stamped	Unidentifiable	Portion: Body; Colour: Purple; Leaf motif
323	1	RWE	Unidentified	Hollowware	Portion: Base; Colour: Blue

APPENDIX A-2: Stage 3 Ceramic Inventory

The Gribbin Site (BdGw-49)

Cat#	Qty	Ware	Motif	Form	Comments
324	4	RWE	Hand Painted - Late Palette	Hollowware	Portion: Rim; Colour: Red, Green; Floral pattern
325	2	RWE	Spongeware	Unidentifiable	Portion: Body; Colour: Blue
326	1	RWE	Spongeware	Hollowware	Portion: Rim; Colour: Light Blue
328	1	RWE	Transfer Print - General	Unidentifiable	Portion: Base; Partial maker's mark present. Blue printed cartouche with ribbons and flowers. Name of maker and pattern absent.
329	1	RWE	Spongeware	Hollowware	Portion: Rim; Colour: Blue; Coarse; open sponging.
330	1	RWE	Hand Painted - Late Palette	Unidentifiable	Portion: Base; Colour: Green; Large floral pattern.
331	2	RWE	Factory Slip - Banded	Hollowware	Portion: Body; Colour: Blue, Brown
332	5	RWE	Edgeware - Chicken Claw	Flatware	Portion: Rim; Colour: Blue
333	2	RWE	Hand Painted - General	Unidentifiable	Portion: Body; Colour: Blue; Blue annular lines
334	8	RWE	Unidentified	Unidentifiable	Portion: Body; Colour: Blue; Miscellaneous blue decoration
335	1	RWE	Transfer Print - General	Flatware	Portion: Rim; Colour: Grey; Dove grey transfer printed motif
336	1	RWE	Unidentified	Hollowware	Portion: Body; Colour: Red
337	1	RWE	Stamped	Unidentifiable	Portion: Rim; Colour: Blue
338	6	RWE	Stamped	Unidentifiable	Portion: Body; Colour: Blue
339	1	Ironstone	Undecorated	Flatware	Portion: Rim
340	1	Ironstone	Undecorated	Unidentifiable	Portion: Base
341	3	Ironstone	Undecorated	Flatware	Portion: Body
342	72	RWE	Undecorated	Unidentifiable	Portion: Body; Miscellaneous undecorated sherds
343	1	RWE	Transfer Print - Willow Pattern	Unidentifiable	Portion: Body; Colour: Blue

Topsoil Sub-Total: 191

Unit Sub-Total: 191

Unit 500N-184E

Topsoil

345	1	RWE	Undecorated	Unidentifiable	Portion: Body
346	1	RWE	Spongeware	Flatware	Portion: Rim; Colour: Blue; Heavy dark blue sponging
347	1	RWE	Stamped	Hollowware	Portion: Rim; Colour: Purple
348	1	RWE	Stamped	Unidentifiable	Portion: Body; Colour: Purple; leaf motif

Topsoil Sub-Total: 4

Unit Sub-Total: 4

APPENDIX A-2: Stage 3 Ceramic Inventory
The Gribbin Site (BdGw-49)

Cat#	Qty	Ware	Motif	Form	Comments
Unit 500N-205E					
Topsoil					
350	1	Ironstone	Moulded - General	Hollowware	Portion: Body
351	2	Red Earthenware - Coarse	Glazed	Hollowware	Portion: Body; Colour: Tan
352	5	Red Earthenware - Coarse	Glazed	Hollowware	Portion: Body; Colour: Dark Brown
353	1	Red Earthenware - Coarse	Undecorated	Hollowware	Portion: Body
354	3	Yellow Ware	Glazed	Unidentifiable	Portion: Body
355	7	Buff Earthenware	Glazed	Hollowware	Portion: Body; Colour: Clear
356	1	RWE	Undecorated	Hollowware	Portion: Footring; Tall and heavy footring
357	4	RWE	Undecorated	Flatware	Portion: Body
358	2	RWE	Spongeware	Unidentifiable	Portion: Body; Colour: Blue, Red
359	1	RWE	Edgeware - Chicken Claw	Flatware	Portion: Rim; Colour: Blue
360	1	RWE	Stamped	Unidentifiable	Portion: Body; Colour: Purple; Leaf motif
361	1	RWE	Stamped	Hollowware	Portion: Body; Colour: Purple
362	1	Unidentifiable	Unidentified	Flatware	Portion: Body
363	1	RWE	Transfer Print - General	Flatware	Portion: Rim; Colour: Grey; Dove grey printed.
364	3	RWE	Transfer Print - Willow Pattern	Flatware	Portion: Body; Colour: Dark Blue
365	2	RWE	Transfer Print - General	Flatware	Portion: Body; Colour: Light Blue
366	5	RWE	Hand Painted - Late Palette	Flatware	Portion: Body; Colour: Green, Red; Large floral motif
367	1	RWE	Stamped	Flatware	Portion: Rim; Colour: Purple
368	1	RWE	Spongeware	Unidentifiable	Portion: Body; Colour: Blue; Coarse sponged.
369	1	RWE	Unidentified	Flatware	Portion: Rim; Colour: Purple
370	1	RWE	Edgeware - Chicken Claw	Flatware	Portion: Rim; Colour: Blue
371	2	Ironstone	Undecorated	Hollowware	Portion: Base
372	3	Ironstone	Undecorated	Flatware	Portion: Rim
373	8	Ironstone	Undecorated	Flatware	Portion: Body
374	34	RWE	Undecorated	Unidentifiable	Portion: Body

Topsoil Sub-Total: 92

Unit Sub-Total: 92

APPENDIX A-2: Stage 3 Ceramic Inventory
The Gribbin Site (BdGw-49)

Cat#	Qty	Ware	Motif	Form	Comments
Unit 500N-215E					
Topsoil					
380	1	Red Earthenware - Coarse	Undecorated	Hollowware	Portion: Body
381	2	RWE	Undecorated	Flatware	Portion: Base
382	2	Buff Earthenware	Glazed	Hollowware	Portion: Body; Colour: Clear
383	2	RWE	Stamped	Unidentifiable	Portion: Body; Colour: Purple
384	1	RWE	Transfer Print - General	Unidentifiable	Portion: Body; Colour: Teal
385	1	RWE	Hand Painted - Late Palette	Hollowware	Portion: Rim; Colour: Red; red annular line at rim.
386	9	RWE	Undecorated	Unidentifiable	Portion: Body
387	2	Ironstone	Undecorated	Flatware	Portion: Rim
388	3	Ironstone	Undecorated	Unidentifiable	Portion: Body; Miscellaneous body sherds.
<i>Topsoil Sub-Total: 23</i>					
<i>Unit Sub-Total: 23</i>					
Unit 502N-195E					
Topsoil					
390	3	Red Earthenware - Coarse	Glazed	Hollowware	Portion: Body; Colour: Dark Brown
391	1	RWE	Factory Slip - Banded	Hollowware	Portion: Body; Colour: Brown, Blue; Carinated vessel. Thin annular brown bands above a blue field
392	1	RWE	Transfer Print - Willow Pattern	Flatware	Portion: Body; Colour: Dark Blue
393	1	RWE	Stamped	Hollowware	Portion: Rim; Colour: Purple, Red; Red annular line at rim. Purple stamped below.
394	1	RWE	Spongeware	Hollowware	Portion: Body; Colour: Blue; Dark blue; heavily sponged.
395	3	RWE	Unidentified	Unidentifiable	Portion: Body; Colour: Grey
396	1	RWE	Spongeware	Unidentifiable	Portion: Body; Colour: Blue; Coarse; open sponged.
397	5	Ironstone	Undecorated	Unidentifiable	Portion: Body
398	1	RWE	Undecorated	Unidentifiable	Portion: Body
399	2	Ironstone	Undecorated	Unidentifiable	Portion: Rim
<i>Topsoil Sub-Total: 19</i>					
<i>Unit Sub-Total: 19</i>					

APPENDIX A-2: Stage 3 Ceramic Inventory
The Gribbin Site (BdGw-49)

Cat#	Qty	Ware	Motif	Form	Comments
Unit 504N-190E					
Topsoil					
405	2	Red Earthenware - Coarse	Glazed	Hollowware	Portion: Body; Colour: Dark Brown
406	4	RWE	Transfer Print - Willow Pattern	Flatware	Portion: Body; Colour: Dark Blue
407	1	RWE	Spongeware	Hollowware	Portion: Rim; Colour: Light Blue
408	1	RWE	Spongeware	Hollowware	Portion: Body; Colour: Blue; Coarse; open sponge.
409	1	RWE	Spongeware	Unidentifiable	Portion: Body; Colour: Red, Blue
410	11	RWE	Undecorated	Unidentifiable	Portion: Body
411	1	Ironstone	Undecorated	Unidentifiable	Portion: Base
412	1	Ironstone	Undecorated	Hollowware	Portion: Rim
413	1	Buff Earthenware	Glazed	Hollowware	Portion: Body; Colour: Tan
414	1	RWE	Undecorated	Plate - General	Portion: Body
415	1	RWE	Undecorated	Hollowware	Portion: Footring; Heavy and substantial footring
<i>Topsoil Sub-Total: 25</i>					
<i>Unit Sub-Total: 25</i>					
Unit 505N-200E					
Topsoil					
420	1	Red Earthenware - Coarse	Undecorated	Hollowware	Portion: Body
421	1	RWE	Transfer Print - General	Flatware	Portion: Body; Colour: Black
422	1	RWE	Transfer Print - General	Flatware	Portion: Rim; Colour: Blue
423	1	RWE	Transfer Print - General	Hollowware	Portion: Body; Colour: Blue
424	1	RWE	Hand Painted - Late Palette	Saucer	Portion: Rim; Colour: Red
425	2	RWE	Edgeware - Chicken Claw	Flatware	Portion: Rim; Colour: Blue
426	2	RWE	Hand Painted - Late Palette	Unidentifiable	Portion: Body; Colour: Blue, Green
427	7	RWE	Hand Painted - General	Unidentifiable	Portion: Body; Colour: Blue; Miscellaneous sherds.
428	1	RWE	Stamped	Hollowware	Portion: Rim; Colour: Red, Purple; red annular line at rim; purple stamped motif below
429	3	RWE	Stamped	Unidentifiable	Portion: Body; Colour: Purple, Red
430	2	RWE	Stamped	Hollowware	Portion: Body; Colour: Purple, Green; Purple stamping with green hand painted motif
431	23	Buff Earthenware	Glazed	Hollowware	Portion: Body; Colour: Tan

APPENDIX A-2: Stage 3 Ceramic Inventory
The Gribbin Site (BdGw-49)

Cat#	Qty	Ware	Motif	Form	Comments
432	4	Ironstone	Undecorated	Flatware	Portion: Body
433	4	Ironstone	Undecorated	Flatware	Portion: Rim
434	25	RWE	Undecorated	Unidentifiable	Portion: Body
435	3	Ironstone	Undecorated	Unidentifiable	Portion: Body

Topsoil Sub-Total: 81

Unit Sub-Total: 81

Unit 505N-210E

Topsoil

440	1	RWE	Stamped	Unidentifiable	Portion: Body; Colour: Purple
441	1	RWE	Edgeware - General	Flatware	Portion: Rim; Colour: Blue
442	1	Buff Earthenware	Unidentified	Unidentifiable	Portion: Body
443	2	RWE	Moulded - General	Unidentifiable	Portion: Body
444	1	RWE	Undecorated	Flatware	Portion: Base
445	2	RWE	Undecorated	Unidentifiable	Portion: Body
446	2	Red Earthenware - Coarse	Undecorated	Hollowware	Portion: Body
447	3	Red Earthenware - Coarse	Glazed	Hollowware	Portion: Body; Colour: Dark Brown

Topsoil Sub-Total: 13

Unit Sub-Total: 13

Unit 509N-205E

Topsoil

450	1	RWE	Stamped	Flatware	Portion: Body; Colour: Purple
451	1	RWE	Hand Painted - Late Palette	Hollowware	Portion: Rim; Colour: Red; Red annular band on interior and exterior.
452	1	RWE	Hand Painted - Late Palette	Unidentifiable	Portion: Body; Colour: Red
453	7	Ironstone	Undecorated	Unidentifiable	Portion: Body; Miscellaneous sherds.
454	1	Ironstone	Undecorated	Flatware	Portion: Rim

Topsoil Sub-Total: 11

Unit Sub-Total: 11

APPENDIX A-2: Stage 3 Ceramic Inventory
The Gribbin Site (BdGw-49)

Cat#	Qty	Ware	Motif	Form	Comments
Unit 510N-185E					
Topsoil					
460	1	RWE	Spongeware	Saucer	Portion: Rim; Colour: Blue; Heavy sponging; medium blue.
461	1	Red Earthenware - Coarse	Glazed	Hollowware	Portion: Rim; Colour: Dark Brown; May be portion of a teapot lid.
462	2	Red Earthenware - Coarse	Glazed	Hollowware	Portion: Body; Colour: Brown
<i>Topsoil Sub-Total: 4</i>					
<i>Unit Sub-Total: 4</i>					
Unit 510N-195E					
Topsoil					
465	1	Ironstone	Moulded - General	Hollowware	Portion: Base
466	1	RWE	Transfer Print - General	Unidentifiable	Portion: Body; Colour: Blue
467	1	RWE	Stamped	Flatware	Portion: Rim; Colour: Purple
468	1	RWE	Spongeware	Unidentifiable	Portion: Body; Colour: Blue; Coarse; open sponged.
469	2	Buff Earthenware	Glazed	Hollowware	Portion: Body; Colour: Brown
470	7	Buff Earthenware	Glazed	Hollowware	Portion: Body; Colour: Clear
471	1	Ironstone	Moulded - General	Hollowware	Portion: Base
472	3	Ironstone	Undecorated	Unidentifiable	Portion: Body
473	11	RWE	Undecorated	Unidentifiable	Portion: Body; Miscellaneous sherds.
<i>Topsoil Sub-Total: 28</i>					
<i>Unit Sub-Total: 28</i>					
Unit 510N-215E					
Topsoil					
475	1	Yellow Ware	Glazed	Unidentifiable	Portion: Body
476	3	RWE	Undecorated	Unidentifiable	Portion: Base
477	1	RWE	Undecorated	Unidentifiable	Portion: Body
<i>Topsoil Sub-Total: 5</i>					
<i>Unit Sub-Total: 5</i>					

APPENDIX A-2: Stage 3 Ceramic Inventory
The Gribbin Site (BdGw-49)

Cat#	Qty	Ware	Motif	Form	Comments
Unit 518N-195E					
Topsoil					
481	1	Red Earthenware - Coarse	Undecorated	Hollowware	Portion: Body
482	1	Red Earthenware - Coarse	Glazed	Hollowware	Portion: Body; Colour: Brown
483	1	RWE	Factory Slip - Banded	Hollowware	Portion: Rim; Colour: Blue; Three annular blue bands below rim
484	1	RWE	Hand Painted - General	Hollowware	Portion: Rim; Colour: Blue
485	1	RWE	Transfer Print - General	Unidentifiable	Portion: Body; Colour: Blue
486	1	RWE	Hand Painted - Late Palette	Flatware	Portion: Rim; Colour: Red; Large floral motif
487	1	RWE	Spongeware	Hollowware	Portion: Body; Colour: Light Blue; Fine; dense sponged
488	5	Ironstone	Undecorated	Unidentifiable	Portion: Body; Miscellaneous sherds.
489	1	Ironstone	Undecorated	Unidentifiable	Portion: Rim
490	4	RWE	Undecorated	Unidentifiable	Portion: Body

Topsoil Sub-Total: 17

Unit Sub-Total: 17

Unit 518N-205E

Topsoil

495	1	Red Earthenware - Refined	Slipped	Hollowware	Portion: Body; Colour: White; Interior white slip is identifiable. Exterior treatment is too burned to identify
496	3	RWE	Transfer Print - General	Unidentifiable	Portion: Body; Colour: Blue
497	1	RWE	Transfer Print - General	Flatware	Portion: Rim; Colour: Blue
498	1	RWE	Hand Painted - General	Hollowware	Portion: Body; Colour: Green; Large floral motif
499	1	RWE	Unidentified	Flatware	Portion: Body; Stamped or sponged.
500	1	RWE	Unidentified	Hollowware	Portion: Body; Colour: Blue; Indeterminate decoration.

Topsoil Sub-Total: 8

Unit Sub-Total: 8

Unit 519N-215E

Topsoil

505	1	RWE	Transfer Print - General	Flatware	Portion: Body; Colour: Blue
-----	---	-----	--------------------------	----------	-----------------------------

APPENDIX A-2: Stage 3 Ceramic Inventory
The Gribbin Site (BdGw-49)

Cat#	Qty	Ware	Motif	Form	Comments
506	3	RWE	Undecorated	Unidentifiable	Portion: Body
<i>Topsoil Sub-Total: 4</i>					
<i>Unit Sub-Total: 4</i>					
Unit 520N-185E					
Topsoil					
510	2	RWE	Undecorated	Flatware	Portion: Body
<i>Topsoil Sub-Total: 2</i>					
<i>Unit Sub-Total: 2</i>					
<hr/> Grand Total : 1042 artifacts <hr/>					