



Simcoe County Data Consortium

November 18th ,2021



Agenda

- **Welcome and Introductions**
- **CDP Updates**
 - Leads update
 - Data Purchasing and Access Working group meeting updates
 - New tables
 - Training and Capacity Building
 - Update on the Solutions Lab



Agenda

- **Local Updates**
 - Roundtable – any other updates to share?
- **New Business**
 - Canada Emergency Response Benefit (CERB) Introduction
- **Next Meeting**
 - TBD



Welcome and Introductions

- Name, title, company and current data projects



Source: <https://marketmentors.com/content-marketing/super-power-of-a-blog/>

CDP Leads Update

Meeting September 23rd

- Creation of a Leads Discussion Group
- Prioritizing 2021 Census Data Acquisition
- Exploring better PCCF
- Updating the Community Recovery Dashboard
- Verify data quality of CD-level CMHC data
- Reminder to submit custom geographies and metadata
- Ottawa, Peel and Calgary will be creating local versions of a National Equity Atlas
- Strategic Plan survey was distributed to all registered users



New Tables

50 new data items were added to the CDP website between July 30, 2021 and October 26, 2021 including:

2019 Taxfiler Data:

- Individual, Family and Senior Tables
- Demographic and Income Profile
- RRSP Contributors
- Charitable Donations
- Migration Estimates, 2019-2020

Tableau Dashboards:

- Mobility In and Out of Local Immigration Partnerships
- Liquid Assets

Canada Emergency Response Benefit Statistics

Real-Time Local Business Conditions Index

Building Permits - detailed, 2016-2020

Canadian Business Counts June 2021

Employment insurance (EI) beneficiaries, monthly, unadjusted for seasonality

Labour Force Survey Supplemental tables, monthly



Source: <https://towardsdatascience.com/data-preprocessing-concepts-fa946d11c825>

Data Purchase and Access Working Group Meetings

- Since the last meeting in August, there has been one meeting on Oct 7th, 2021
- **Updates:**
 - Work to improve PCCF
 - Possibility of purchase 2019 Canadian Health Survey on Children and Youth data at the LHIN and LHIN subregion geographies
 - More Taxfiler data is available at CSD level although there are still data quality issues with CSD level data
 - Note: publicly released tables are produced using the preliminary estimates database, while any custom order would be produced using the final estimates database.
- Prioritizing 2021 Census Data Acquisition
 - Consider new variables and concepts
 - **gender vs sex**
 - military service
 - schooling in minority language
 - updated Indigenous population categories
 - religion
- Canadian Housing Survey data purchasing is in the works.
- E-mail Victoria.chapman@simcoe.ca if you have any questions or suggestions related to DPAWG

More data is coming, please see [DPAWG meeting notes](#) for more information



Discussion

1. Has anyone used any of the Tableau Dashboards for their work?
2. Has anyone used the data on CERB recipients?
3. Is anyone interested in 2019 Canadian Health Survey on Children and Youth data?
4. Does anyone have any experiences they would like to share about data they have accessed from the CDP?



Source: <http://blog.eendorsements.com/perform-an-online-reputation-analysis-on-the-famous-platforms-to-know-your-brands-impression/>

Training and Capacity Building

Since the last meeting in August, there have not been any meetings

- **Past:**
 - **October 26, 2021:** Orientation to the Community Data Program and the Catalogue
 - **September 28, 2021:** Statistics Canada work towards linked databases using building footprints and property parcels
- **Has anyone attended any good training and capacity building they would like to share about?**
- [Recordings of past webinars are available on the CDP website](#)
- **ACTION:** E-mail webinar ideas of datasets or topics you would be interested in to Victoria.chapman@simcoe.ca



Solutions Lab: Developing easy-to-use community decision-making tools to help achieve National Housing Strategy goals

Funded by the National Housing Strategy Solutions Labs, the Community Data Program (CDP) has teamed up with Canada Mortgage and Housing Corporation (CMHC) on a Solutions Lab.

The goal of this Solutions Lab is to help municipalities and community sector organizations find the best way to measure and respond to local housing and housing-related issues through relevant data, visualization, and reporting tools.

The project is currently in the prototype stage. The last Solutions Lab session was on Tuesday November 16 and collected feedback from participants on the prototype.

More information can be found on the Housing Solutions Lab Portal:

<https://communitydata.ca/content/solutions-lab-community-decision-making-tools-housing-issues>



Source: <https://www.cleanpng.com/png-housing-information-data-hub-diagram-2237472/preview.html>



Solutions Lab Update

Wheelhouse Model for Organizing Data



Source: <https://www.cmhc-schl.gc.ca/en/blog/2019-housing-observer/wheelhouse-new-way-looking-housing-needs>



Solutions Lab Update

Ownership Housing

How are NHS priority groups affected by core housing need?

What are the physical characteristics of ownership market housing affected by core housing need?

How does the ownership housing stock change from year-to-year?

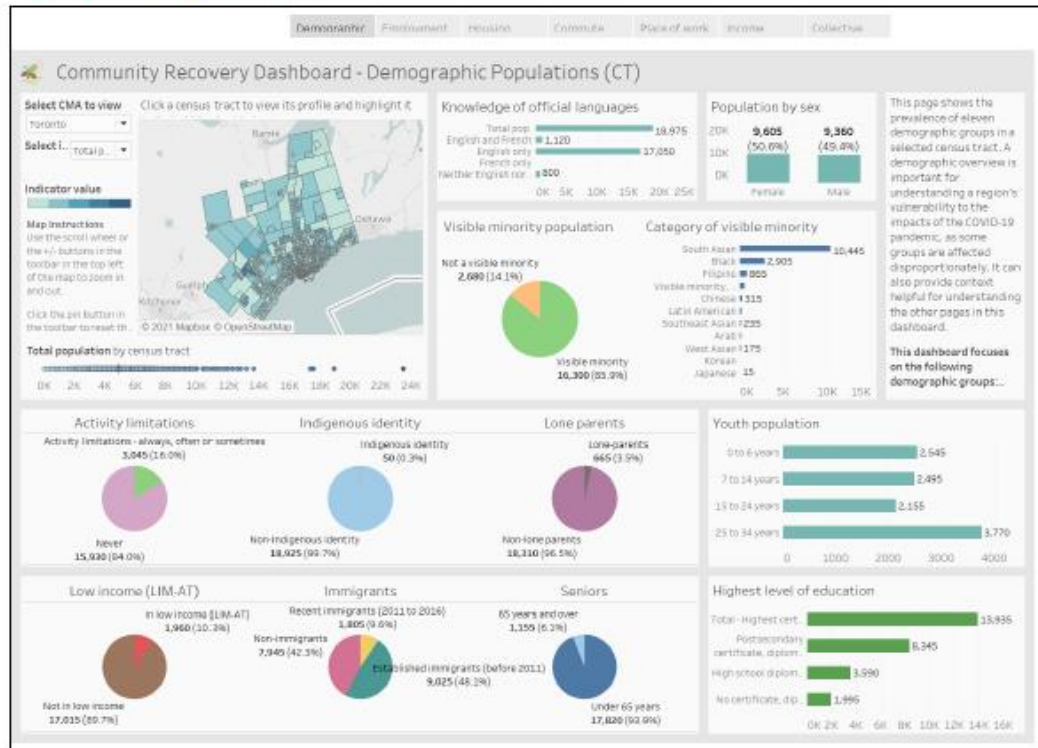
Variable	Source	Year	Description
Ownership Housing - Core Housing Need	Census	2016	By Priority groups in/not in core housing need (low income, indigenous, racialized (disaggregated), seniors, recent immigrants, activity limitations)
Ownership Housing - Change in stock	CMHC	2020	# of starts, # of completions, # of absorptions by dwelling type
	Building permits	2016-2020	# of units by new construction, conversions, demolition, renovations



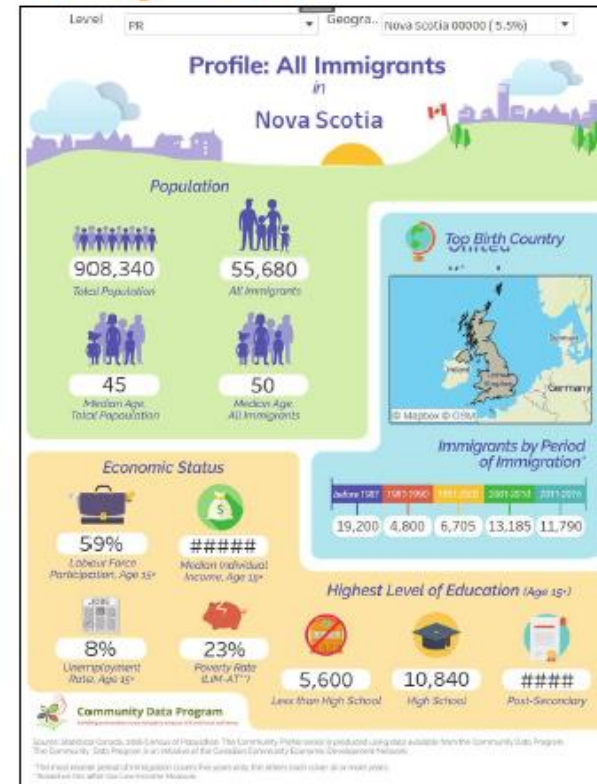
Solutions Lab Update

Data Visualization

Dashboard



Storyboard



Local Updates

- Round Table



New Business

- **Canada Emergency Response Benefit (CERB) Introduction**





Next Meeting:
TBD

