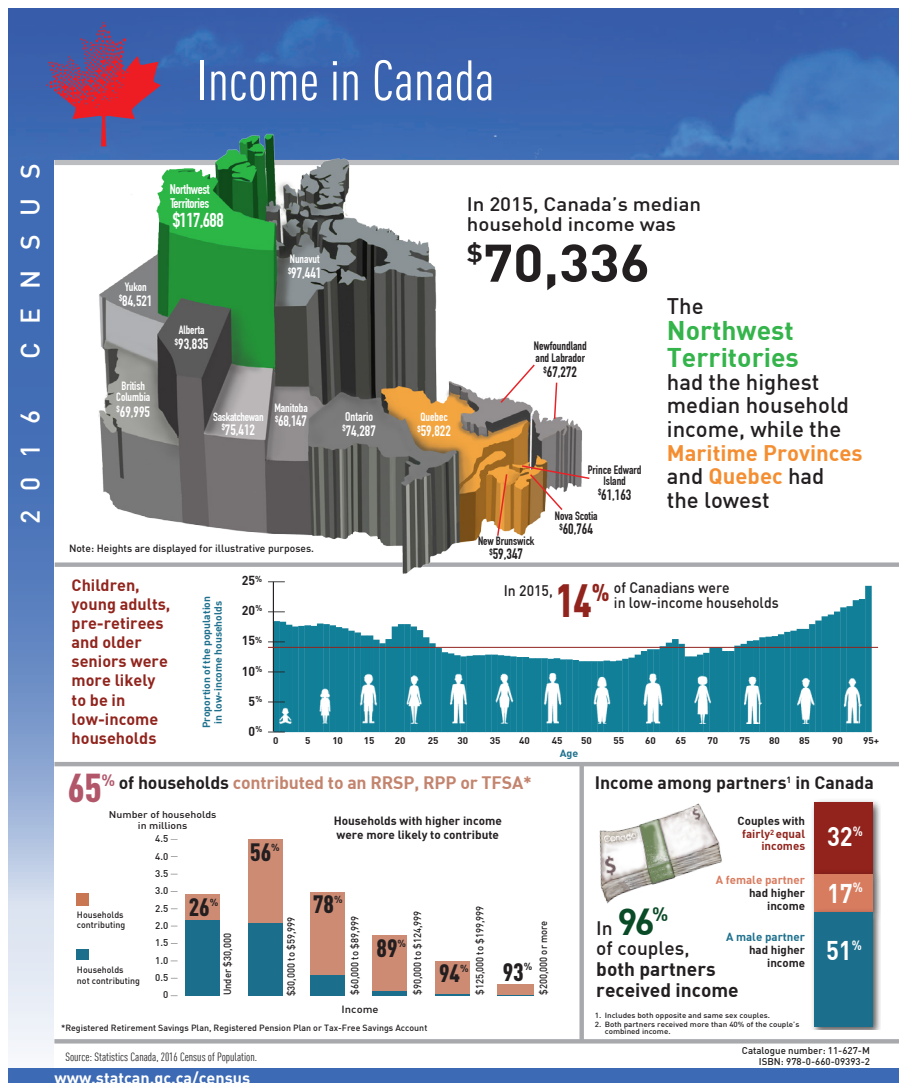


Simcoe County Data Consortium UPDATE

Community Data Program | Autumn 2017

2016 Census

On September 13, 2017, Statistics Canada released data from the 2016 Census on the incomes of Canadians as measured in 2015, which looks at trends over the 2005-to-2015 period. The median total income of Canadian households reached \$70,336 in 2015, a 10.8% increase from \$63,457 in 2005. Ontario and Quebec saw the slowest increases, 3.8% and 8.9% respectively. The census showed the income gap between men and women narrowing over the 10 years. Based on the data from the 2016 Census, the following infographic looks at income in Canada, including median household income, people living in low-income households, incomes of couples, and use of tax assisted savings accounts.



What's New...

There's plenty of new data in the communitydata.ca catalogue:

- **Census Profile 2016 – Data Tables**
This series of tables present a portrait of Canada based on the various census topics. They range in complexity and are available for various levels of geography.
- **Age and sex, Census, 2016**
- **Families, Households and Marital Status, Census 2016**
- **Language, Census 2016**
- **Type of Dwelling, Census 2016**
- **Income, Census 2016**
- **Canadian business counts, establishment and location counts, employment size and North American Industry Classification System (NAICS), June 2017**
Canadian business patterns data provide counts of active establishments by industry classification and employment size categories. The data are compiled from the Business Register, which is a repository of information on the Canadian business population.
- **Canadian Capital Gains, 2015**
- **Charitable Donations, 2015**
- **Canadian Investors, 2015**



facebook.com/CanadianCouncilonSocialDevelopment



@the_CCSD

Chronic Low Income Among Immigrants in Canada and its Communities

The study Chronic Low Income Among Immigrants in Canada and its Communities provides new evidence on the incidence of chronic low income among immigrants aged 25 or older during the 2000s as well as variations across 29 Canadian cities and regions. Chronic low income is defined as having a family income under a low-income cut-off for five or more consecutive years.

About one-half of all immigrants in Canada who were below the low-income cut-off in 2012 had been so for five years or more, compared to 43% among persons born in Canada. These shares were quite stable over the 2000s.

Read the full study here:
<http://www.statcan.gc.ca/pub/11f0019m/11f0019m2017397-eng.htm>



2021 Census of Population Content Consultation

Statistics Canada is conducting a public consultation on the 2021 Census of Population from September to December 2017. We encourage you to participate in this online consultation and to forward information about the consultation to other census data users.

Click on the link below or copy this link to your browser to take part in the consultation and to complete the consultation questionnaire

<https://www68.statcan.gc.ca/ecp-pce/en/load-init/CPCC>.

Comments collected during the consultation may be published anonymously in the 2021 Census of Population Content Consultation Report, which will be available on the Statistics Canada website in the fall of 2019.

Simcoe County Community Data

The Social Policy and Planning team at the County of Simcoe has launched the new Community Data webpage www.simcoe.ca/communitydata, which includes data charts, community reports and thematic maps, including 2006, 2011 and 2016 Statistics Canada Census reports, updates and data! More to come!

Simcoe County Local Data Consortium will remain at www.simcoe.ca/dataconsortium

What Have You Been Up To?

Have you created something using data from the CCSD Community Data Program? If so, you can show off your work to the network and drive traffic to your website!

Find what others have done with CDP data at <http://communitydata.ca/resources> under **Community Reporting**.

For more information on the Simcoe County Data Consortium, contact:

Irena Pozgaj-Jones, Program Supervisor
Children and Community Services, County of Simcoe
705-722-3132 Ext. 1039 | irena.pozgaj-jones@simcoe.ca

Olga Belanovskaya, Research Analyst
Children and Community Services, County of Simcoe
705-722-3132 Ext. 1076 | olga.belanovskaya@simcoe.ca

