



COUNTY OF SIMCOE SOCIAL AND COMMUNITY SERVICES AND HOUSING DEVELOPMENT IN BRADFORD WEST GWILLIMBURY

NOVEMBER 2021



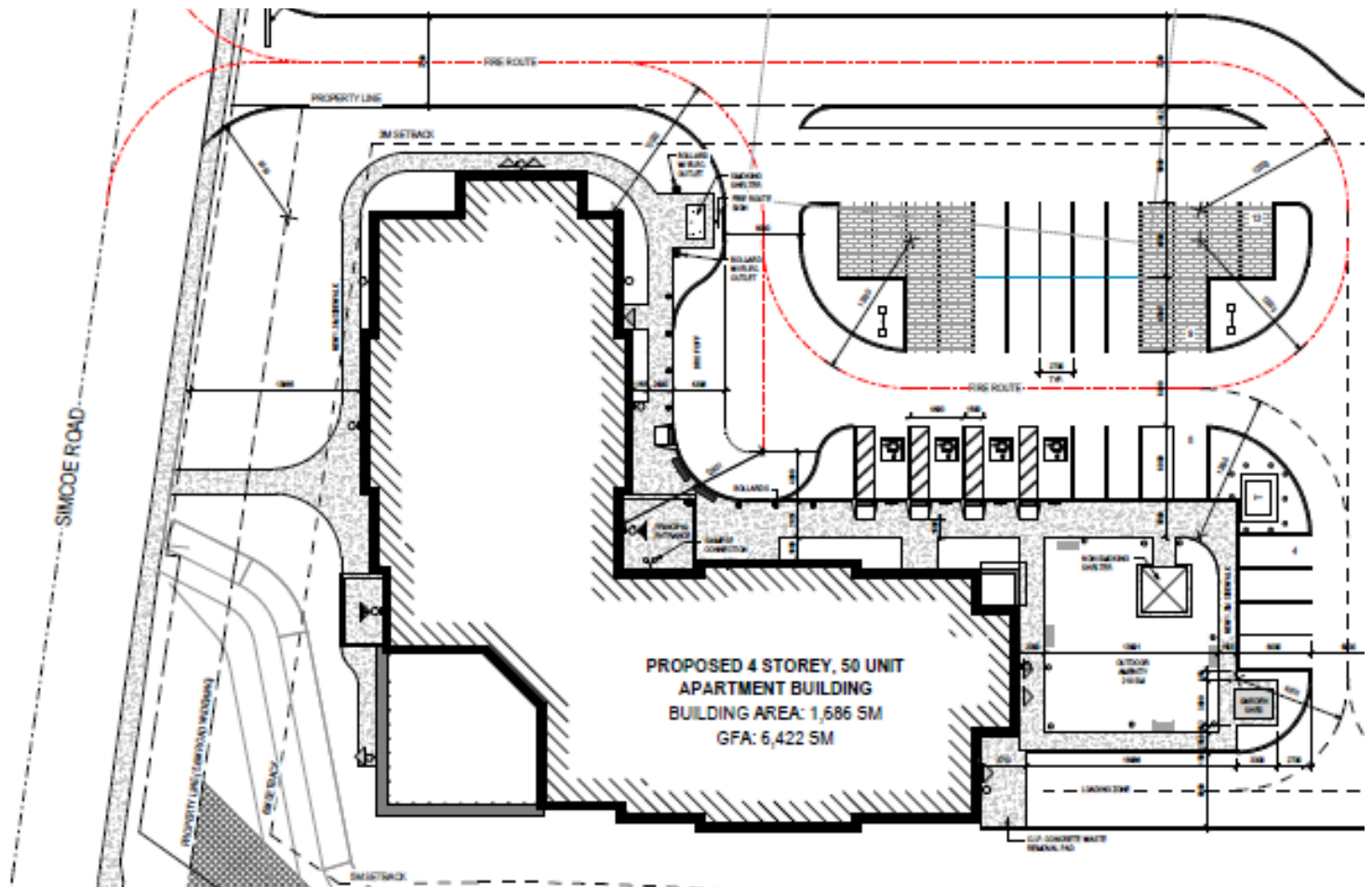


BACKGROUND

The Simcoe County Housing Corporation with the Town of Bradford West Gwillimbury are working together to provide affordable housing. Located on approximately 2 acres at the corner of Simcoe Road and Marshview Boulevard, in Bradford, the County plans to construct a low-rise apartment building beginning the spring of 2022 which is expected to be available for occupancy December 2023.

The proposed development, referenced as the Simcoe County Housing Corporation Development in Bradford West Gwillimbury, directly supports Our Community 10-Year Affordable Housing and Homelessness Prevention Strategy, and will contribute to the diversity of housing options in the community, as well as provide ground level agency space and program rooms for community and social services.

PROPOSED SITE PLAN



PROPOSED DEVELOPMENT

The building is designed as one building with 2 four storey 'wings', and a tiered central common area. The proposed development includes 50 affordable mixed residential units designed for seniors, families, and individuals. This includes approximately 7 three-bedroom units, 12 two-bedroom units targeted to families and 31 one-bedroom units designed for seniors. All of the apartment units and community rooms will be barrier-free and utilize universal design practices and can accommodate persons with disabilities. The residential tenants will have access to a tenant common room with a kitchen that can be used for programs, and an adjacent outdoor patio amenity area.

The Site will include an outdoor amenity area with garden boxes, playground and connectivity to walking paths. The landscaping will also include seating areas, accent plantings, and appropriate tree planting to enhance the Site and compatibility with adjacent recreational uses.

The development also proposes to include non-residential uses on the ground level. Ground floor resources and supports through County of Simcoe services include Ontario Works, Children and Community Services, and Social Housing services. In addition, a community program room and community kitchen are included in the proposed design. The on-site services and community rooms present partnership opportunities with community agencies to work directly with building residents, as well as community residents. Additional leasable agency space is included on the ground floor which will be made available to compatible community partner(s).

LANDSCAPE PLAN



BUILDING RENDERINGS

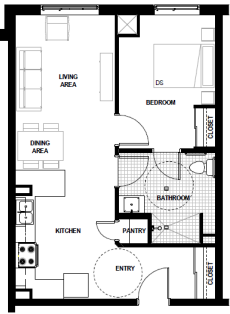
SOUTH WEST



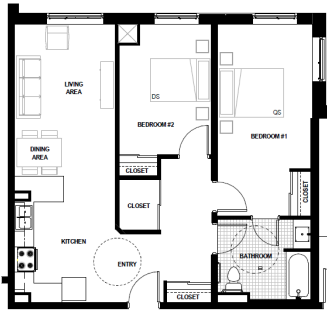
NORTH EAST



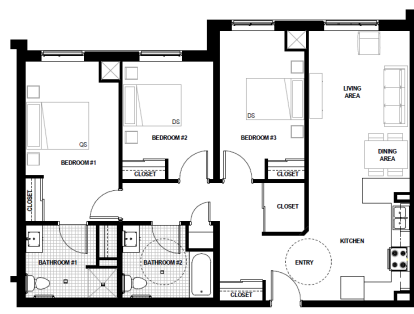
SUITE DESIGN



One Bedroom Suite



Two Bedroom Suite



Three Bedroom Suite

GROUND FLOOR PLAN



The County plans to construct the multi-use apartment building starting in the Spring of 2022 and it is expected to be available for occupancy late fall of 2023.

WHERE CAN I FIND MORE INFORMATION?

Information on the site plan approval process can be received by contacting the Town of Bradford West Gwillimbury Planning Department, Thomas Dysart, Planner by emailing tdysart@townofbwg.com or calling at 905-778-2055 ext. 1403.

Feedback or questions can be submitted by email to BWGdevelopment@simcoe.ca or by calling the Social Housing Department at 705-726-9300 ext. 1485.