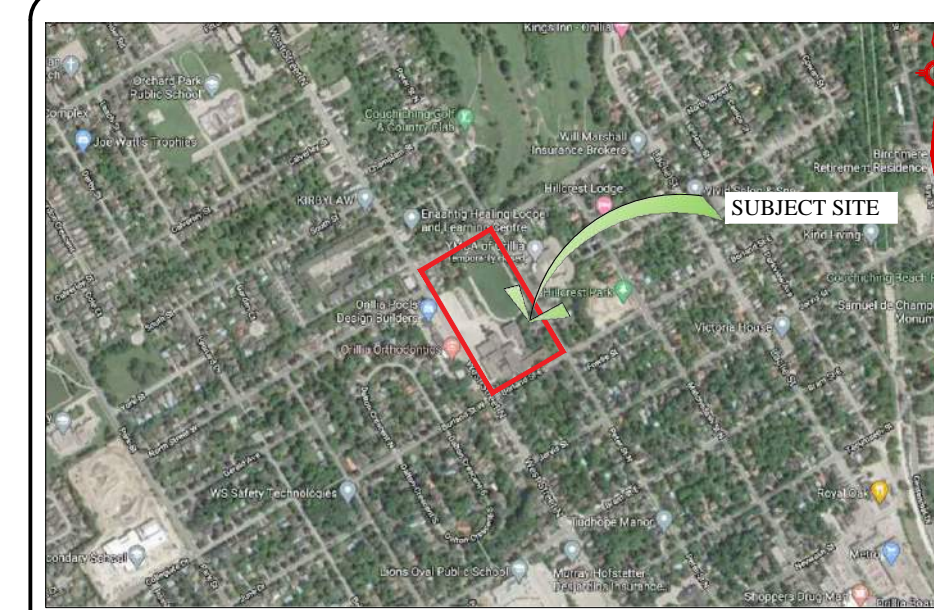


LANDSCAPE CONCEPT PLAN

1:500

- LEGEND**
- TREES TO BE PRESERVED
  - DECIDUOUS TREES
  - CONIFEROUS TREES
  - SHRUBS
  - PLANT BED EDGING
  - GARDEN BOX
  - BIKE RACK ON CONCRETE PAD
  - BENCHES ON CONCRETE PAD
  - LITTER RECEPTACLE ON CONCRETE PAD
  - LIMESTONE SCREENING PATH (LP-2)
  - PRIVACY BOARD FENCE
  - ORNAMENTAL FENCE
  - TREE PRESERVATION FENCE
  - LIGHTING BOLLARDS
  - SOD
  - NATIVE SEED MIX
  - RETAINING WALL

NOTE: PROPOSED TREES ARE SHOWN AT 50% CANOPY SPREAD. SHRUBS ARE SHOWN AT THE MATURITY SPREAD



KEY MAP N.T.S.

**GENERAL NOTES**

CONTRACTOR IS RESPONSIBLE FOR ALL LOCATES INCLUDING ALL UNDERGROUND SERVICES PRIOR TO ANY EXCAVATION OR INSTALLATIONS. THE CONTRACTOR IS REQUIRED TO NOTIFY THE VARIOUS UTILITY COMPANIES 48 HOURS PRIOR TO THE COMMENCEMENT OF ANY WORK.

ANY ACCOMPANYING DOCUMENTATION RELATING TO THE LANDSCAPE PLAN AND/OR PRESERVATION PLAN SUCH AS TENDER DOCUMENTS AND CHANGE NOTICES ARE TO BE ENDORSED BY J.D.B. ASSOCIATES LIMITED PRIOR TO THE BEGINNING OF ANY SITE WORKS. IN THE EVENT THAT A DISCREPANCY THE DRAWING SHALL BE ASSUMED CORRECT.

IT IS THE RESPONSIBILITY OF THE PERSON OR PERSONS RESPONSIBLE FOR THE CONSTRUCTED WORKS TO NOTIFY THE LANDSCAPE ARCHITECT WHEN PREPARED FOR ANY REQUIRED INSPECTIONS AND SIGN OFFS.

SCHEDULED MEETINGS SHALL TAKE PLACE AT THE CLOSEST MUTUALLY CONVENIENT TIME.

No.	REVISION	DATE	APRVD.
1.	SUBMITTED FOR SPA	November 13, 2020	SJT

ALL DRAWINGS AND SPECIFICATIONS ARE INSTRUMENTS OF SERVICE AND ARE THE PROPERTY OF J. D. B. ASSOCIATES LIMITED. DRAWINGS ARE NOT TO BE MODIFIED AND/OR REPRODUCED WITHOUT THE WRITTEN CONSENT OF J.D.B. ASSOCIATES LIMITED. REPRODUCTION OF DRAWINGS IN ANY FORM WITHOUT THE CONSENT OF J.D.B. ASSOCIATES LIMITED VOIDS THE DRAWING AT WHICH TIME J.D.B. ASSOCIATES LIMITED ACCEPTS NO LIABILITY FOR THE DRAWING CONTENT OR WORKS RESULTING FROM SAID REPRODUCTION. DRAWINGS MAY BE REPRODUCED BY MUNICIPAL AND GOVERNMENT AGENCIES RESPONSIBLE FOR APPROVALS FOR THEIR OWN USE. J. D. B. ASSOCIATES RESERVES THE RIGHT TO WITHDRAW ANY DRAWING(S) FROM GOVERNMENT OR MUNICIPAL AGENCIES WHETHER APPROVED OR NOT IN THE EVENT THAT ACCOUNTS ARE NOT SETTLED OR REMAIN OUTSTANDING.

IT IS THE RESPONSIBILITY OF THE CONTRACTOR TO VERIFY ALL DIMENSIONS ON THE SITE AND REPORT ANY DISCREPANCIES OR VARIATIONS FROM THE SUPPLIED INFORMATION TO THE LANDSCAPE ARCHITECT WITH THE PROJECT. J. D. B. ASSOCIATES LIMITED IS NOT RESPONSIBLE FOR THE ACCURACY OF SURVEY, ARCHITECTURAL, MECHANICAL, ENGINEERING OR ELECTRICAL INFORMATION SHOWN ON THE DRAWING. FOR FURTHER INFORMATION REFER TO APPROPRIATE SURVEY, ARCHITECTURAL, MECHANICAL, ENGINEERING OR ELECTRICAL DRAWINGS PRIOR TO PROCEEDING WITH ANY WORKS.

THIS DRAWING IS NOT TO BE SCALED.

BASE INFORMATION PROVIDED BY:  
MCLARCHITECTS  
48 ALLIANCE BLVD, UNIT 110 BARRIE, ONTARIO  
L4M 5K3 WWW.MCLARCHITECTS.CA

BASE PLAN REVISED: September 2020

LANDSCAPE ARCHITECTS STAMP  
2020-09-01 09:00:00 AM

**JDB ASSOCIATES LTD.**

Urban Designers  
Landscape Architects  
Arborists

274 Burton Ave., Suite 1201  
Barrie, Ontario  
L4N 5W4

Fax: 705-722-5660  
Tel: 705-722-6278

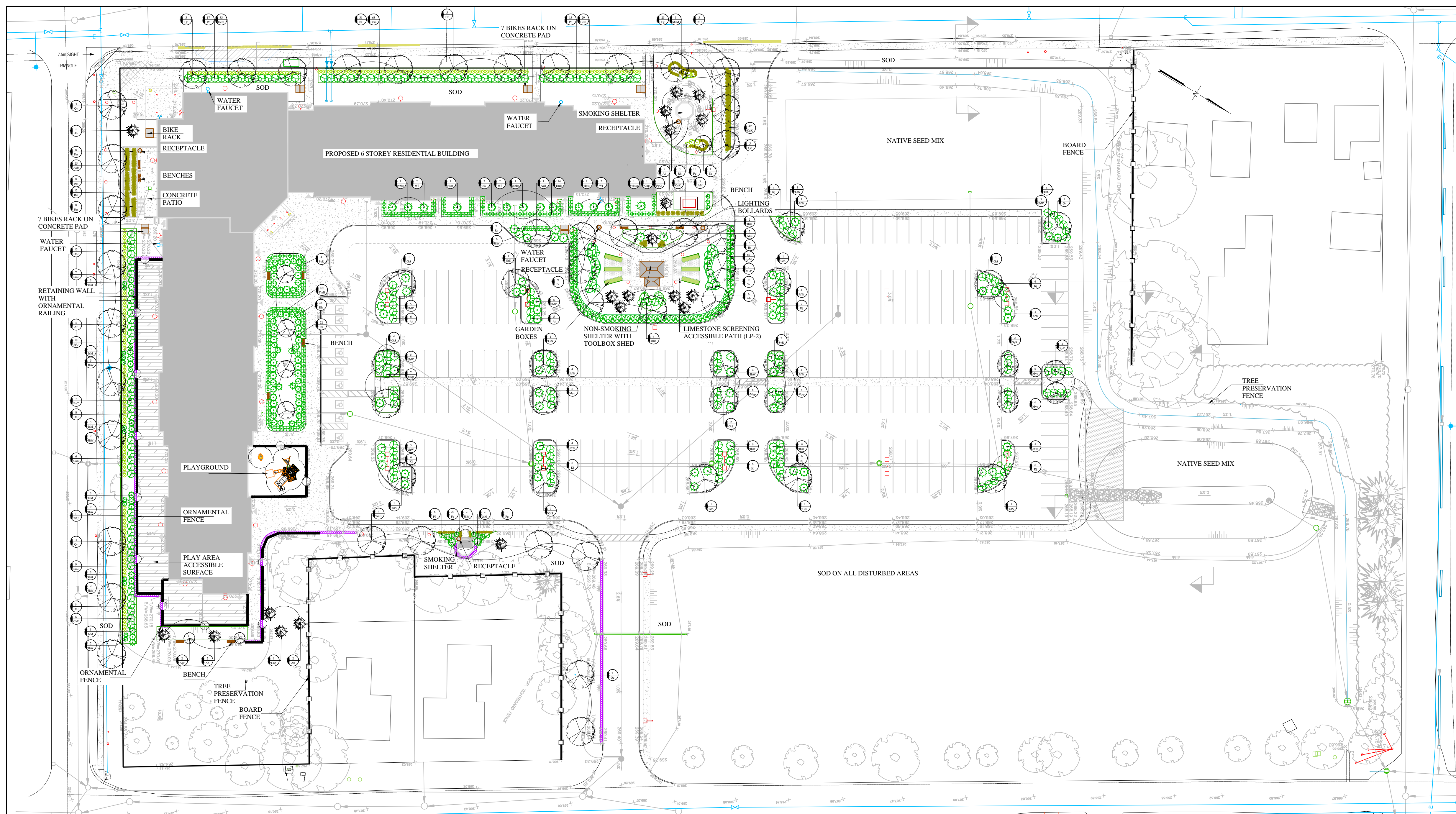
**SIMCOE COUNTY SERVICE CAMPUS - ORILLIA**

2 BORLAND STREET EAST, ORILLIA, ON

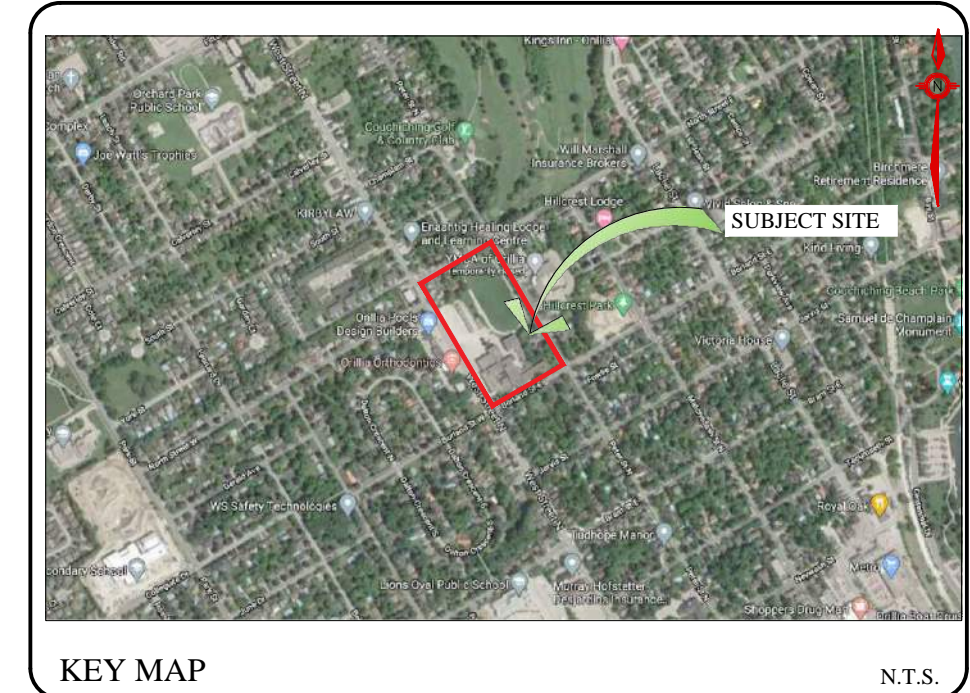
**LANDSCAPE CONCEPT PLAN**

SCALE:	DATE:	DESIGNED BY:	REVIEWED BY:
1:500	October 7, 2020	SJT	NB
CITY FILE No.	OUR FILE REF. #	DRAWN BY:	
	24-20	SJT	LP-1





NOTE: PROPOSED TREES ARE SHOWN AT 50% CANOPY SPREAD. SHRUBS ARE SHOWN AT THE MATURITY SPREAD.



KEY MAP N.T.S.

**GENERAL NOTES**

CONTRACTOR IS RESPONSIBLE FOR ALL LOCATES INCLUDING ALL UNDERGROUND SERVICES PRIOR TO ANY EXCAVATION OR INSTALLATIONS. THE CONTRACTOR IS REQUIRED TO NOTIFY THE VARIOUS UTILITY COMPANIES 48 HOURS PRIOR TO THE COMMENCEMENT OF ANY WORK.

ANY ACCOMPANYING DOCUMENTATION RELATING TO THE LANDSCAPE PLAN AND/OR PRESERVATION PLAN SUCH AS TENDER DOCUMENTS AND CHANGE NOTICES ARE TO BE ENDORSED BY J.D.B. ASSOCIATES LIMITED PRIOR TO THE BEGINNING OF ANY SITE WORKS. IN THE EVENT THAT A DISCREPANCY THE DRAWING SHALL BE ASSUMED CORRECT.

IT IS THE RESPONSIBILITY OF THE PERSON OR PERSONS RESPONSIBLE FOR THE CONSTRUCTED WORKS TO NOTIFY THE LANDSCAPE ARCHITECT WHEN PREPARED FOR ANY REQUIRED INSPECTIONS AND SIGN OFFS.

SCHEDULED MEETINGS SHALL TAKE PLACE AT THE CLOSEST MUTUALLY CONVENIENT TIME.

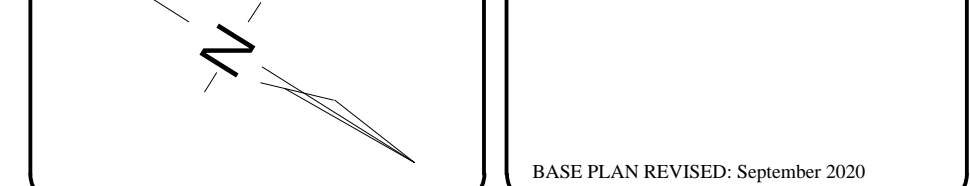
No.	REVISION	DATE	APRVD.
1.	SUBMITTED FOR SPA	November 13, 2020	SJT

ALL DRAWINGS AND SPECIFICATIONS ARE INSTRUMENTS OF SERVICE AND ARE THE PROPERTY OF J. D. B. ASSOCIATES LIMITED. DRAWINGS ARE NOT TO BE MODIFIED AND/OR REPRODUCED WITHOUT THE WRITTEN CONSENT OF J.D.B. ASSOCIATES LIMITED. REPRODUCTION OF DRAWINGS IN ANY FORM WITHOUT THE CONSENT OF J.D.B. ASSOCIATES LIMITED VOIDS THE DRAWING AT WHICH TIME J.D.B. ASSOCIATES LIMITED ACCEPTS NO LIABILITY FOR THE DRAWING CONTENT OR WORKS RESULTING FROM SAID REPRODUCTION. DRAWINGS MAY BE REPRODUCED BY MUNICIPAL AND GOVERNMENT AGENCIES RESPONSIBLE FOR APPROVALS FOR THEIR OWN USE. J. D. B. ASSOCIATES RESERVES THE RIGHT TO WITHDRAW ANY DRAWING(S) FROM GOVERNMENT OR MUNICIPAL AGENCIES WHETHER APPROVED OR NOT IN THE EVENT THAT ACCOUNTS ARE NOT SETTLED OR REMAIN OUTSTANDING.

IT IS THE RESPONSIBILITY OF THE CONTRACTOR TO VERIFY ALL DIMENSIONS ON THE SITE AND REPORT ANY DISCREPANCIES OR VARIATIONS FROM THE SUPPLIED INFORMATION TO THE LANDSCAPE ARCHITECT WITH THE PROJECT. J. D. B. ASSOCIATES LIMITED IS NOT RESPONSIBLE FOR THE ACCURACY OF SURVEY, ARCHITECTURAL, MECHANICAL, ENGINEERING OR ELECTRICAL INFORMATION SHOWN ON THE DRAWING. FOR FURTHER INFORMATION REFER TO APPROPRIATE SURVEY, ARCHITECTURAL, MECHANICAL, ENGINEERING OR ELECTRICAL DRAWINGS PRIOR TO PROCEEDING WITH ANY WORKS.

THIS DRAWING IS NOT TO BE SCALED.

BASE INFORMATION PROVIDED BY:  
MCLARCHITECTS  
48 ALLIANCE BLVD, UNIT 110 BARRIE, ONTARIO  
L4M 5K3 WWW.MCLARCHITECTS.CA

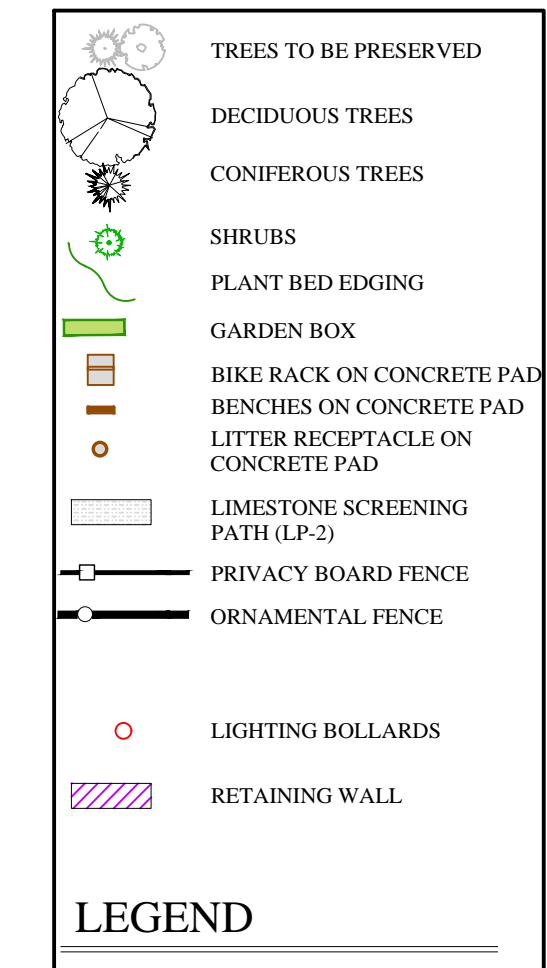


BASE PLAN REVISED: September 2020



**LANDSCAPING PLAN**

1:500



CODE	QNTY	COMMON NAME	BOTANICAL NAME	SIZE	FORM	SPACING	DETAIL	NOTES
<b>CONIFEROUS TREES</b>								
Ab	16	BALSAM FIR	Abies balsamea	200cm	w.b.	6m o/c	D-2	Full form / Do not cut leader
Cnp	2	WEeping FALSE CYPRESS	Chamaecyparis nootkatensis 'Pendula'	200cm	w.b.	As Per Drawing	D-2	Full form / Do not cut leader
Pg	1	WHITE SPRUCE	Picea glauca	200cm	w.b.	5m o/c	D-2	Full form / Do not cut leader
PpG	1	COLORADO BLUE SPRUCE	Picea pungens 'Glauca'	200cm	w.b.	As Per Drawing	D-2	Full form / Do not cut leader
<b>DECIDUOUS TREES</b>								
AeB	6	BAUMAN HORSECHESTNUT	Aesculus hippocastanum 'Baumannii'	50 mm	w.b.	as shown	D-1	Full Form/sterile double flowers
Af	4	ARMSTRONG MAPLE	Acer x freemianii 'Armstrong'	50 mm	W.B.	7.0 m o/c	D-1	Full Form
Ag	2	PAPERBARK MAPLE	Acer griseum	50 mm	W.B.	6.0 m o/c	D-1	Full Form
Gs	15	SHADEMASTER HONEYLOCUST	Gleditsia triacanthos var. inermis 'Shademaster'	50 mm	W.B.	9.0 m o/c	D-1	Full Form
MxP	7	RED SPLENDOR CRABAPPLE	Malus 'Red Splendor'	50 mm	W.B.	7.0 m o/c	D-1	Full Form
PxR	4	CHANTICLEER ORNAMENTAL PEAR	Pyrus calleryana 'Chanticleer'	50 mm	W.B.	5.0 m o/c	D-1	Full Form
Qc	16	SCARLET OAK	Quercus coccinea	50 mm	W.B.	9.0 m o/c	D-1	Full Form/Acidic soil
Qr	1	RED OAK	Quercus rubra	50 mm	W.B.	9.0 m o/c	D-1	Spring planting/ Soil pH<7.5
Sa	1	EUROPEAN MOUNTAIN ASH	Sorbus aucuparia	50 mm	W.B.	6.0 m o/c	D-1	Full Form
SyR	6	IVORY SILK TREE LILAC	Syringa reticulata 'Ivory Silk'	50 mm	W.B.	6.0 m o/c	D-1	Full Form
Ti	5	STERLING SILVER LINDEN	Tilia tomentosa 'Sterling Silver'	50 mm	W.B.	9.0 m o/c	D-1	Full Form

CODE	QNTY	COMMON NAME	BOTANICAL NAME	SIZE	FORM	SPACING	DETAIL	NOTES
<b>STANDARD TREES</b>								
Hyst	2	PEEGEE HYDRANGEA (standard)	Hydrangea paniculata 'Grandiflora'	150 cm stem	7 gal	As Per Drawing	D-3	Tree form / Container grown
SyMst	3	MISS KIM LILAC (standard)	Syringa patula 'Miss Kim'	150 cm stem	7 gal	As Per Drawing	D-3	Tree form / Container grown

CODE	QNTY	COMMON NAME	BOTANICAL NAME	SIZE	FORM	SPACING	DETAIL	NOTES
<b>BROADLEAF EVERGREENS</b>								
Im	22	BLUE PRINCE HOLLY	Ilex x meserveae 'Blue Prince'	40 cm	2 gal.	0.80 m o/c	D-3	Full form / Container grown
Rh	39	HAAGA RHODODENDRON	Rhododendron x marjatta 'Haaga'	40 cm	2 gal.	1.30 m o/c	D-3	Full form / Container grown

CODE	QNTY	COMMON NAME	BOTANICAL NAME	SIZE	FORM	SPACING	DETAIL	NOTES
<b>SPREADING EVERGREENS</b>								
JhB	2	BLUE CHIP JUNIPER	Juniperus horizontalis 'Blue Chip'	40 cm	2 gal	0.90 m o/c	D-3	Full form / Container grown
JhW	88	BLUE RUG JUNIPER	Juniperus horizontalis 'Wiltoni'	40 cm	2 gal.	0.90 m o/c	D-3	Full form / Container grown
JmM	23	MOFFETT JUNIPER	Juniperus scopulorum 'Moffettii'	150 cm	w.b.	0.90 m o/c	D-3	Full form / Container grown
TmB	234	BROWN'S YEW	Taxus x media 'Brownii'	40 cm	2 gal	1.0m o/c	D-3	Full form / Container grown

PLANT LIST REFER TO PLANTING NOTES AND DETAILS ON LP-2

**DECIDUOUS SHRUBS**

Bt	31	ROSE GLOW BARBERRY	Berberis thunbergii 'Rose Glow'	40 cm	2 gal	0.80 m o/c	D-3	Full form / Container grown
CaE	19	SILVER EDGE DOGWOOD	Cornus alternifolia 'Silver Edge'	40 cm	2 gal	1.10m o/c	D-3	Full form / Container grown
EaC	37	DWARF WINGED BURNING BUSH	Cornus alba 'Elegans'	40 cm	2 gal.	1.60 m o/c	D-3	Full form / Container grown
Hj	2	TWIST-N-SHOUT HYDRANGEA	Hydrangea macrophylla 'Twist-n-Shout'	40 cm	2 gal	1.2m o/c	D-3	Full form / Container grown
Kj	56	DOUBLE FLOWED KERRIA	Kerria japonica 'Pleinflora'	40 cm	2 gal	1.6m o/c	D-3	Full form / Container grown
My	33	BAYBERRY	Myrica pensylvanica	40 cm	2 gal	1.75m o/c	D-3	Full form / Container grown
Pc	41	PURPLE LEAF SAND CHERRY	Prunella x vanhouttei 'Purple Leaf'	40 cm	2 gal	0.90m o/c	D-3	Full form / Container grown
Pf	6	PINK BEAUTY POTENTILLA	Potentilla fruticosa 'Pink Beauty'	40 cm	2 gal	0.60m o/c	D-3	Full form / Container grown
PIU	89	MANGO TANGO POTENTILLA	Potentilla fruticosa 'Uman'	40 cm	2 gal	0.60m o/c	D-3	Full form / Container grown
Rht	6	TIGER EYES CUTLEAF SUMAC	Rhus typhina 'Tiger Eyes'	40 cm	2 gal	2.0m o/c	D-3	Full form / Container grown
Rr	7	NEARLY WILD ROSE	Rosa rugosa 'Nearly Wild'	50 cm	2 gal	0.90m o/c	D-3	Full form / Container grown
Sv	9	RENAISSANCE SPIRAEA	Spiraea x vanhouttei 'Renaissance'	40 cm	2 gal	As Per Drawing	D-3	Full form / Container grown
SyM	69	MISS KIM LILAC	Syringa patula 'Miss Kim'	40 cm	2 gal	1.0m o/c	D-3	Full form / Container grown
WV	6	MY MONET WEIGELA	Weigela florida 'My Monet' (Verweig)	40 cm	2 gal	0.6m o/c	D-3	Full form / Container grown

**GROUND COVER**

Aub	25	ROCK CRESS	Aubrieta cultorum 'Cascade Blue'	9cm	pot	0.6 m o/c	n/a	Full form / Container grown
IbS	12	CANDYTUFT	Iberis sempervirens 'Snowflake'	9cm	1 gal	0.4 m o/c	n/a	Full form / Container grown
Phs	24	MOSS PHLOX	Phlox subulata 'Emerald Pink'	18 cm	pan	0.45 m o/c	n/a	Full form / Container grown

**ORNAMENTAL GRASSES**

CaK	59	KARL FOERSTER FEATHER REED GRASS	Calamagrostis arundinacea 'Karl Foerster'	1 gal	pot	0.60 m o/c	n/a	Full form / Container grown
Fg	58	ELIJAH'S BLUE FESCUE	Festuca glauca 'Elijah Blue'	1 gal	pot	0.30 m o/c	n/a	Full form / Container grown
Hs	6	SAPPHIRE FOUNTAIN BLUE OAT GRASS	Helictotrichon sempervirens 'Saphiresprude'	1 gal	pot	0.60 m o/c	n/a	Full form / Container grown
MxM	3	MALEPARTUS MAIDEN GRASS	Miscanthus sinensis 'Malepartus'	1 gal	pot	0.60 m o/c	n/a	Full form / Container grown

**PERENNIALS**

Hem	125	STELLA D'ORO DAYLILY	Hemerocallis x 'Stella D'Oro'	1 gal	pot	0.60 m o/c	n/a	Full form / Container grown
-----	-----	----------------------	-------------------------------	-------	-----	------------	-----	-----------------------------

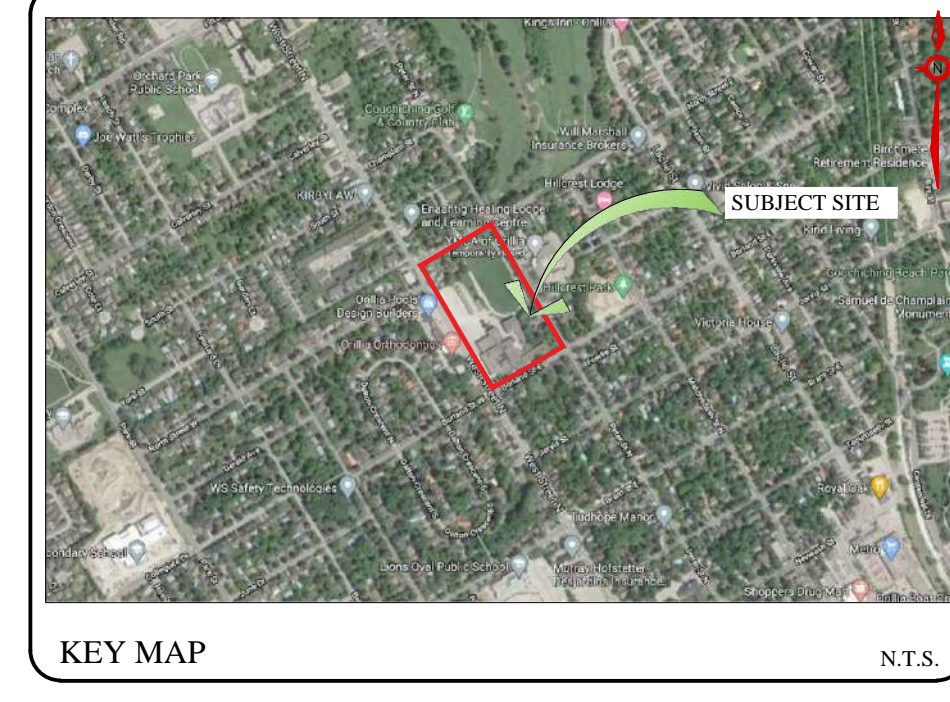
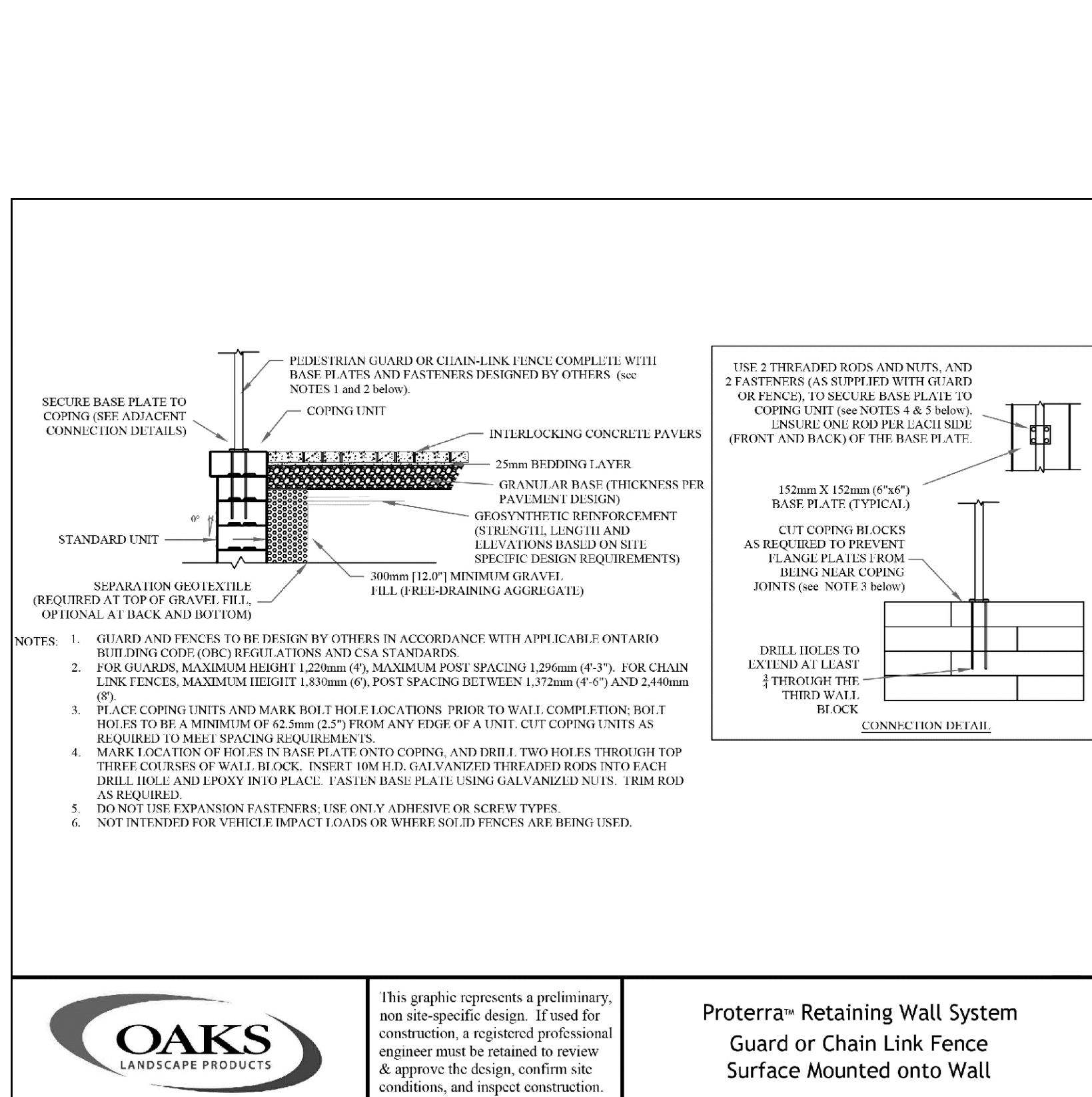
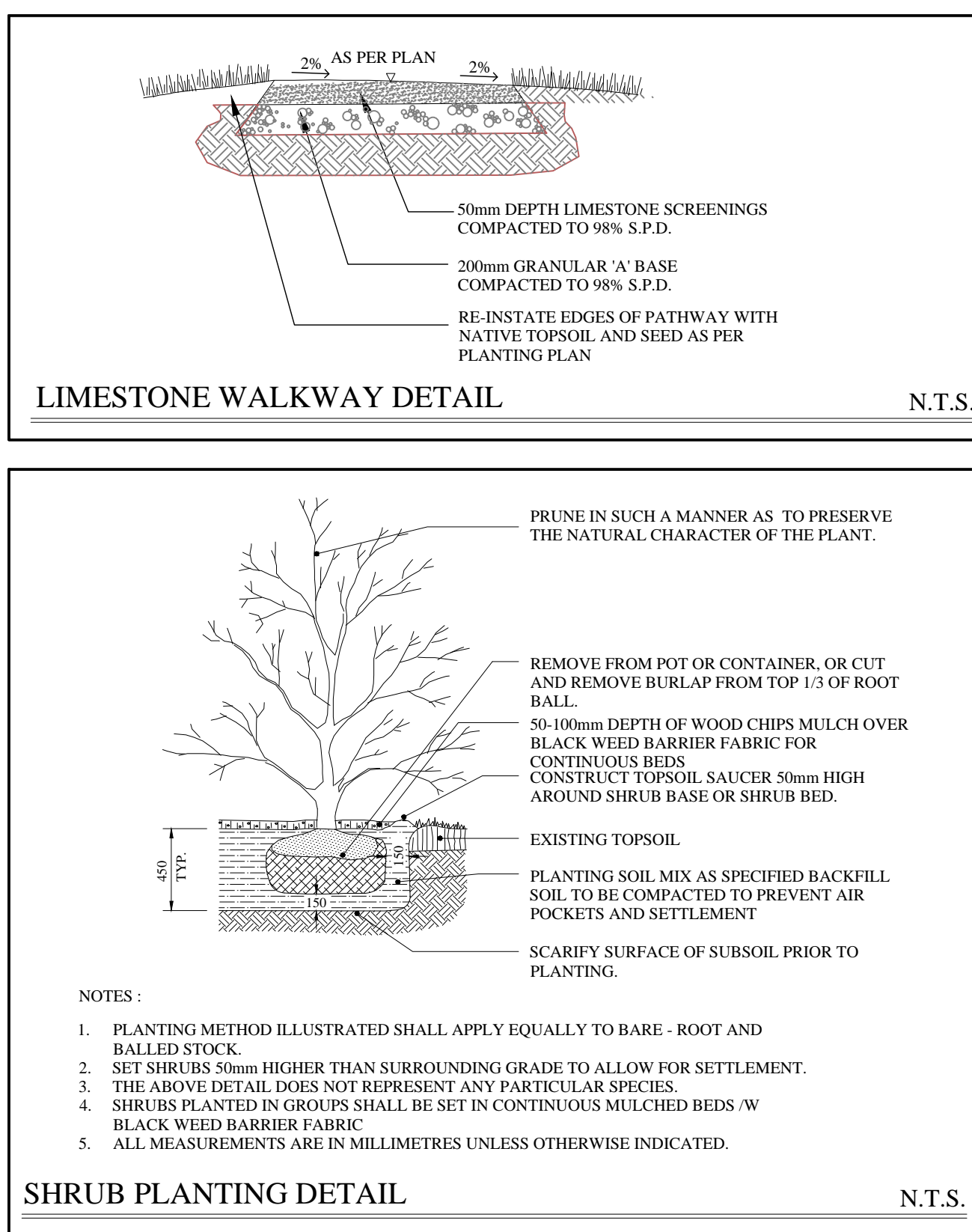
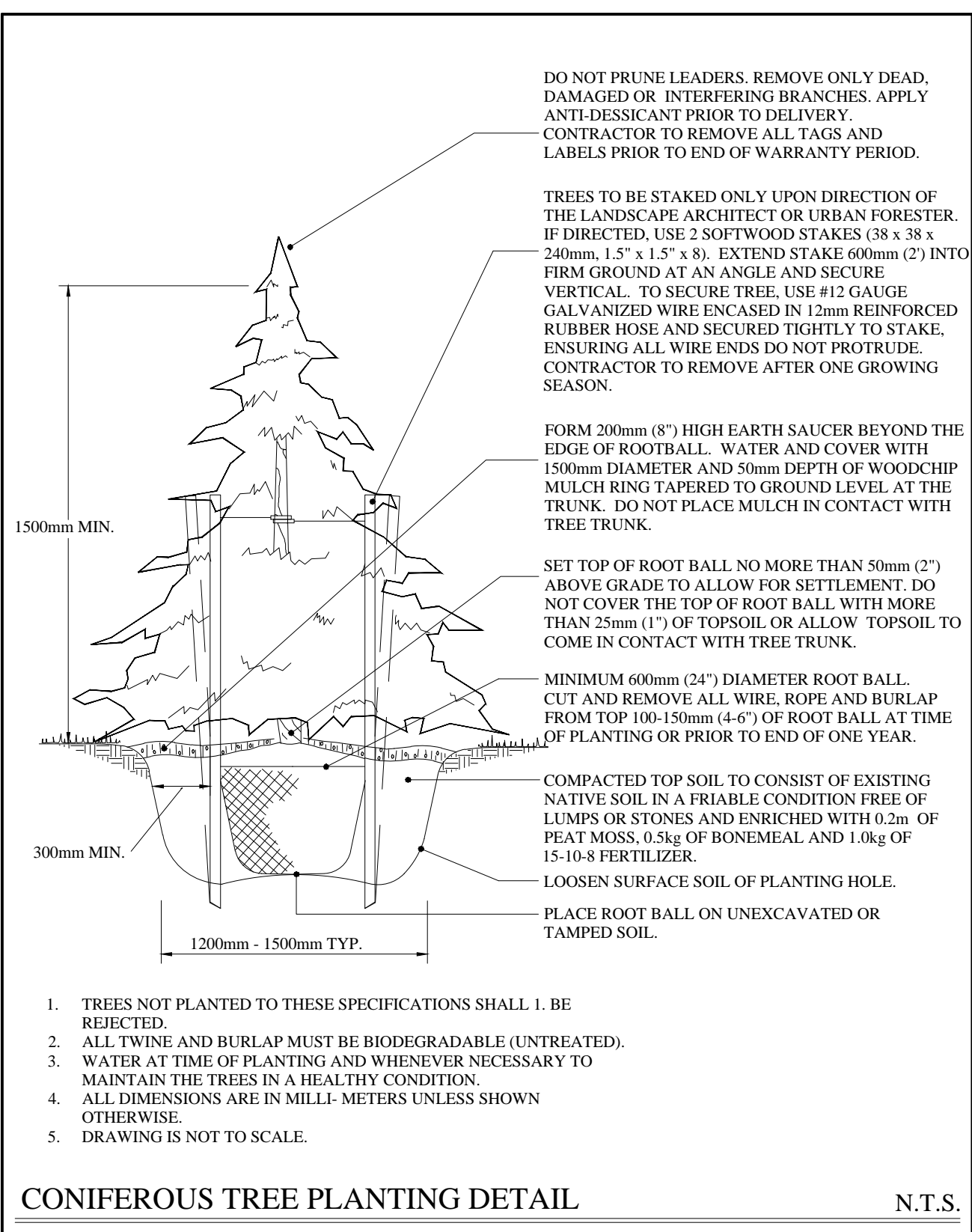
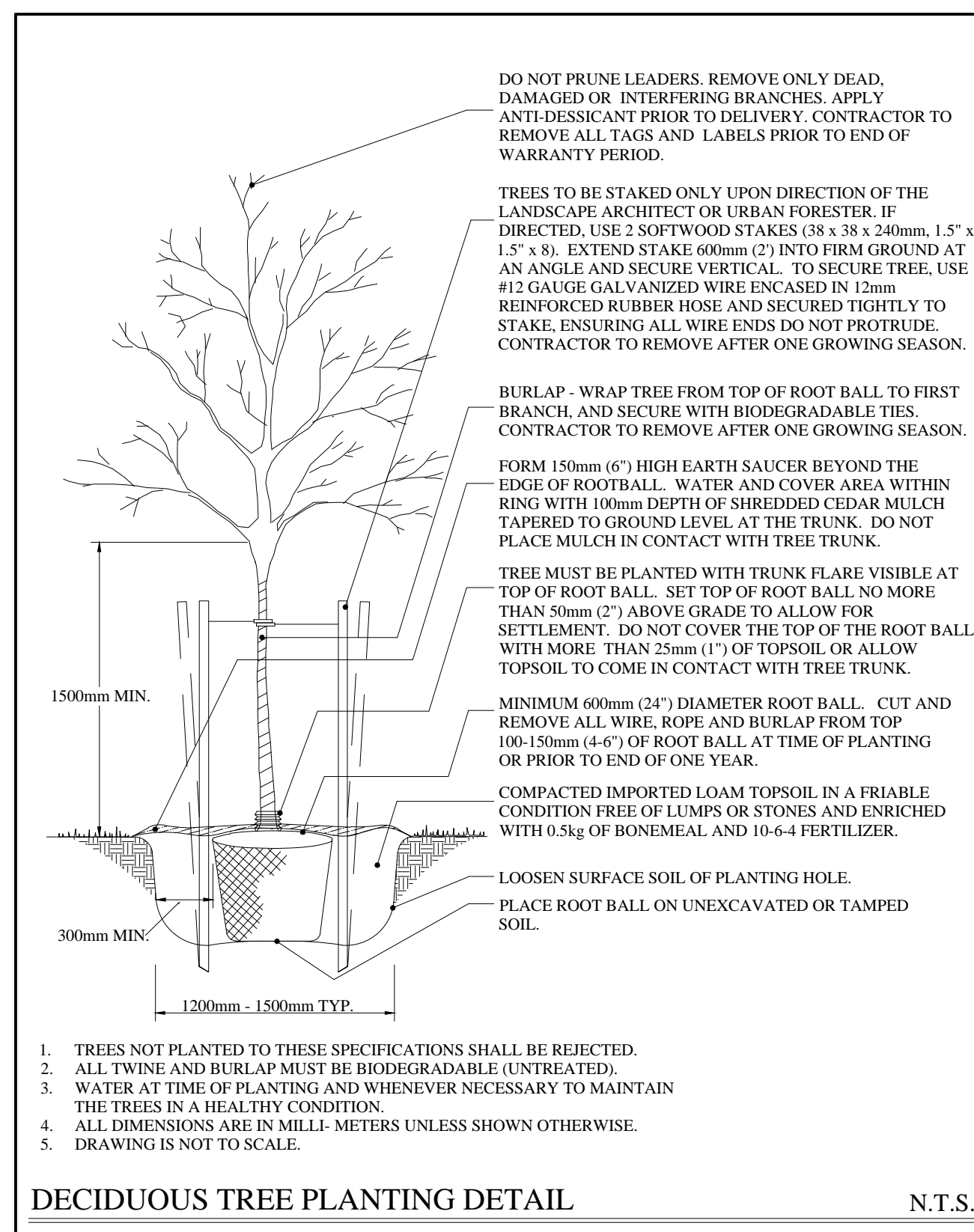
**JDB ASSOCIATES LTD.**  
Urban Designers  
Landscape Architects  
Arborists  
274 Burton Ave., Suite 1201  
Barrie, Ontario  
L4N 5W4  
Fax: 705-722-5660  
Tel: 705-722-6278

**SIMCOE COUNTY SERVICE CAMPUS - ORILLIA**  
2 BORLAND STREET EAST, ORILLIA, ON

**LANDSCAPE PLANTING PLAN**

SCALE:	DATE:	DESIGNED BY:	REVIEWED BY:
1:500	October 7, 2020	SJT	NB
CITY FILE No.	OUR FILE REF. #	DRAWN BY:	
	24-20	SJT	LP-2





GENERAL NOTES

CONTRACTOR IS RESPONSIBLE FOR ALL LOCATES INCLUDING ALL UNDERGROUND SERVICES PRIOR TO ANY EXCAVATION OR INSTALLATIONS. THE CONTRACTOR IS REQUIRED TO NOTIFY THE VARIOUS UTILITY COMPANIES 48 HOURS PRIOR TO THE COMMENCEMENT OF ANY WORK.

ANY ACCOMPANYING DOCUMENTATION RELATING TO THE LANDSCAPE PLAN AND/OR PRESERVATION PLAN SUCH AS TENDER DOCUMENTS AND CHANGE NOTICES ARE TO BE ENDORSED BY J.D.B. ASSOCIATES LIMITED PRIOR TO THE BEGINNING OF ANY SITE WORKS. IN THE EVENT THAT A DISCREPANCY THE DRAWING SHALL BE ASSUMED CORRECT.

IT IS THE RESPONSIBILITY OF THE PERSON OR PERSONS RESPONSIBLE FOR THE CONSTRUCTED WORKS TO NOTIFY THE LANDSCAPE ARCHITECT WHEN PREPARED FOR ANY REQUIRED INSPECTIONS AND SIGN OFFS.

SCHEDULED MEETINGS SHALL TAKE PLACE AT THE CLOSEST MUTUALLY CONVENIENT TIME.

No.	REVISION	DATE	APRVD.
1.	SUBMITTED FOR SPA	November 13, 2020	SKT

SITE CONDITIONS

- VERIFY ALL EXISTING SITE CONDITIONS AND REPORT ANY DISCREPANCIES BEFORE COMMENCING WORK.
- THE CONTRACTOR SHALL VERIFY THE LOCATION OF ALL UTILITIES AND IS RESPONSIBLE FOR ANY DAMAGE TO SERVICES, EXISTING VEGETATION OR ANY OTHER FEATURES TO BE RETAINED.
- FOR ALL AREAS OF DISTURBANCE: NATIVE TOPSOIL IS TO BE STRIPPED, STOCK PILED AND REPLACED TO A MINIMUM DEPTH OF 300mm.

PLANT MATERIAL REQUIREMENTS

- PLANT MATERIAL LISTED IN THE PLANT SCHEDULE ARE MINIMUM SPECIES +/- NURSERY GROWN AND UNIFORM SPECIMENS. NO SUBSTITUTIONS WILL BE PERMITTED WITHOUT WRITTEN APPROVAL FROM THE LANDSCAPE ARCHITECTS.
- DECIDUOUS TREES SHALL HAVE A STRAIGHT CENTRAL LEADER AND WELL BRANCHED 1.5M ABOVE GRADE UNLESS OTHERWISE STATED.
- CONIFEROUS TREES SHALL HAVE A STRAIGHT CENTRAL LEADER AND DENSELY BRANCHED TO WITHIN 0.3m OF THE GROUND.
- ALL PLANTING MATERIAL AND OPERATIONS TO MEET OR EXCEED THE HORTICULTURAL STANDARDS OF THE CANADIAN NURSERY LANDSCAPE ASSOCIATION AND THE HORTICULTURAL TRADES ASSOCIATION. ALL PLANT MATERIAL TO BE NO.1 GRADE NURSERY STOCK. UNSATISFACTORY STOCK WILL BE REFUSED ON THE SITE.
- SOD TO BE CANADA NO.1 NURSERY SOD, MEETING ONTARIO SOD GROWERS ASSOCIATION STANDARDS. ALL SOD AREAS TO RECEIVE 200MM DEPTH OF TOPSOIL UNLESS OTHERWISE INDICATED.

PLANTING NOTES

- LOCATIONS FOR PLANT MATERIAL AND PLANTING BEDS ARE TO BE MARKED OR STAKED OUT BY THE CONTRACTOR AND APPROVED BY THE LANDSCAPE ARCHITECT AND MUNICIPAL STAFF PRIOR TO INSTALLATION.
- ALL PLANT MATERIAL WHICH ARE SPECIFIED BY O.C. (ON CENTER SPACING) ARE TO BE PLANTED AS NOTED IN THE PLANT SCHEDULE.
- IN THE EVENT OF A DISCREPANCY BETWEEN THE PLANT LIST AND DRAWING, THE DRAWING WILL BE ASSUMED TO BE CORRECT.
- ALL MASS PLANTINGS OF SHRUBS SHALL BE IN CONTINUOUS BEDS AND MULCHED AS SPECIFIED.
- ALL TREE PITS SHALL INCLUDE TREATMENT WITH MICROHIZAL FUNGI OF THE WALLS BEFORE PLANTING (2L OF "MIKE" OR SIMILAR PRODUCT SHALL BE USED FOR EACH 60MM CALIPER TREE)
- ALL TREES ARE TO BE STAKED OR GUY WIRED ACCORDING TO DETAILS PROVIDED. NO ACCESSIBLE OPEN HOLE TREE PITS SHALL BE PERMITTED OVERNIGHT.
- REMOVE BURLAP AND ROPE FROM THE TOP 1/3 OF ROOT BALLS.
- WATER AT TIME OF PLANTING AND WHENEVER DEEMED NECESSARY TO MAINTAIN THE TREES IN A HEALTHY CONDITION.
- ALL PLANT MATERIALS WHICH CAN NOT BE PLANTED IMMEDIATELY UPON ARRIVAL ON SITE SHALL BE PROPERLY HEeled IN OR WELL PROTECTED WITH SOIL OR SIMILAR MATERIALS TO PREVENT DRYING OUT AND SHALL BE KEPT MOIST UNTIL COMMENCEMENT OF PLANTING.
- NO ACCESSIBLE OPEN HOLE TREE PITS SHALL BE PERMITTED OVERNIGHT. ALL OPEN PITS SHALL BE ADEQUATELY PROTECTED BY BARRIERS OR FILLED IN WITH SOIL PRIOR TO THE END OF EACH PLANTING DAY.
- ALL NEW WORK TO BLEND NEATLY AND SMOOTHLY WITH EXISTING CONDITIONS.

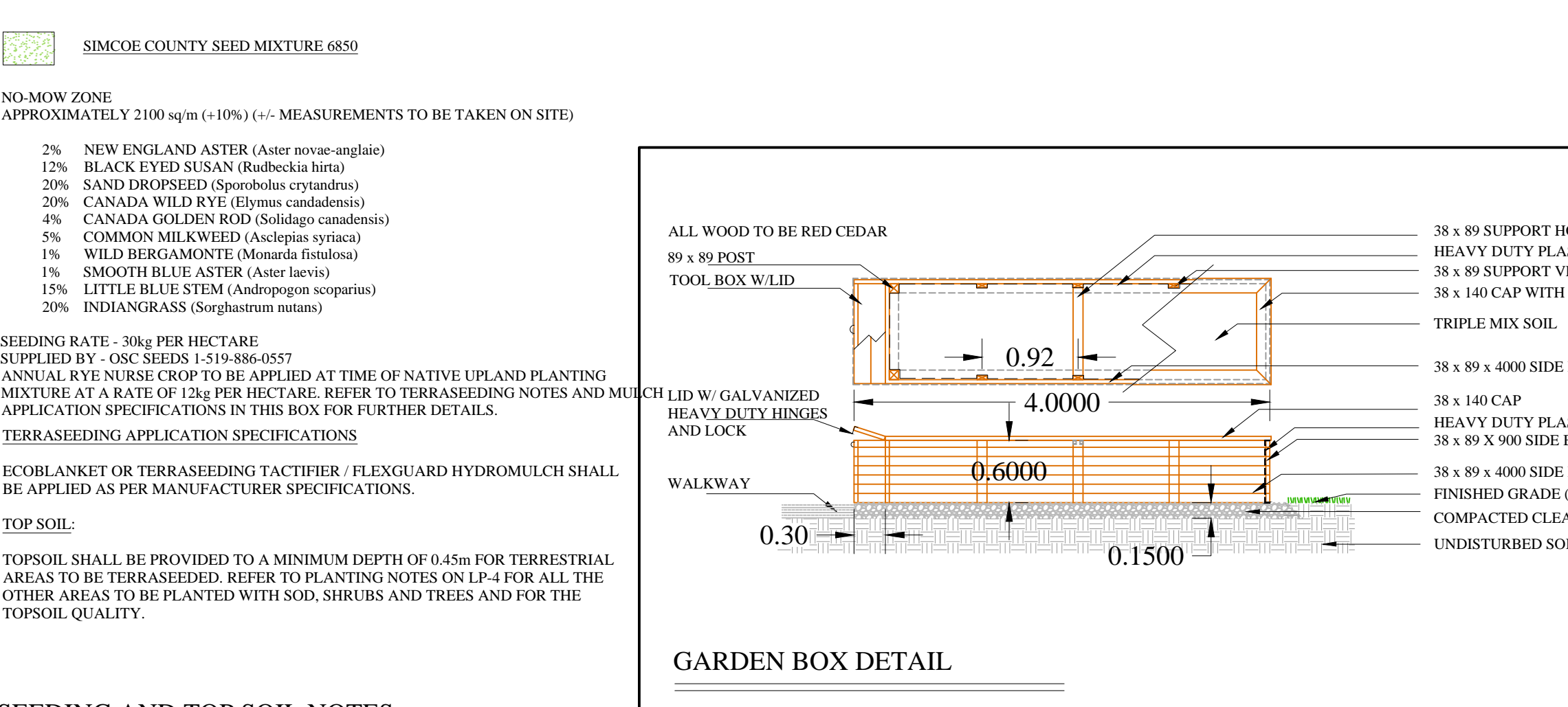
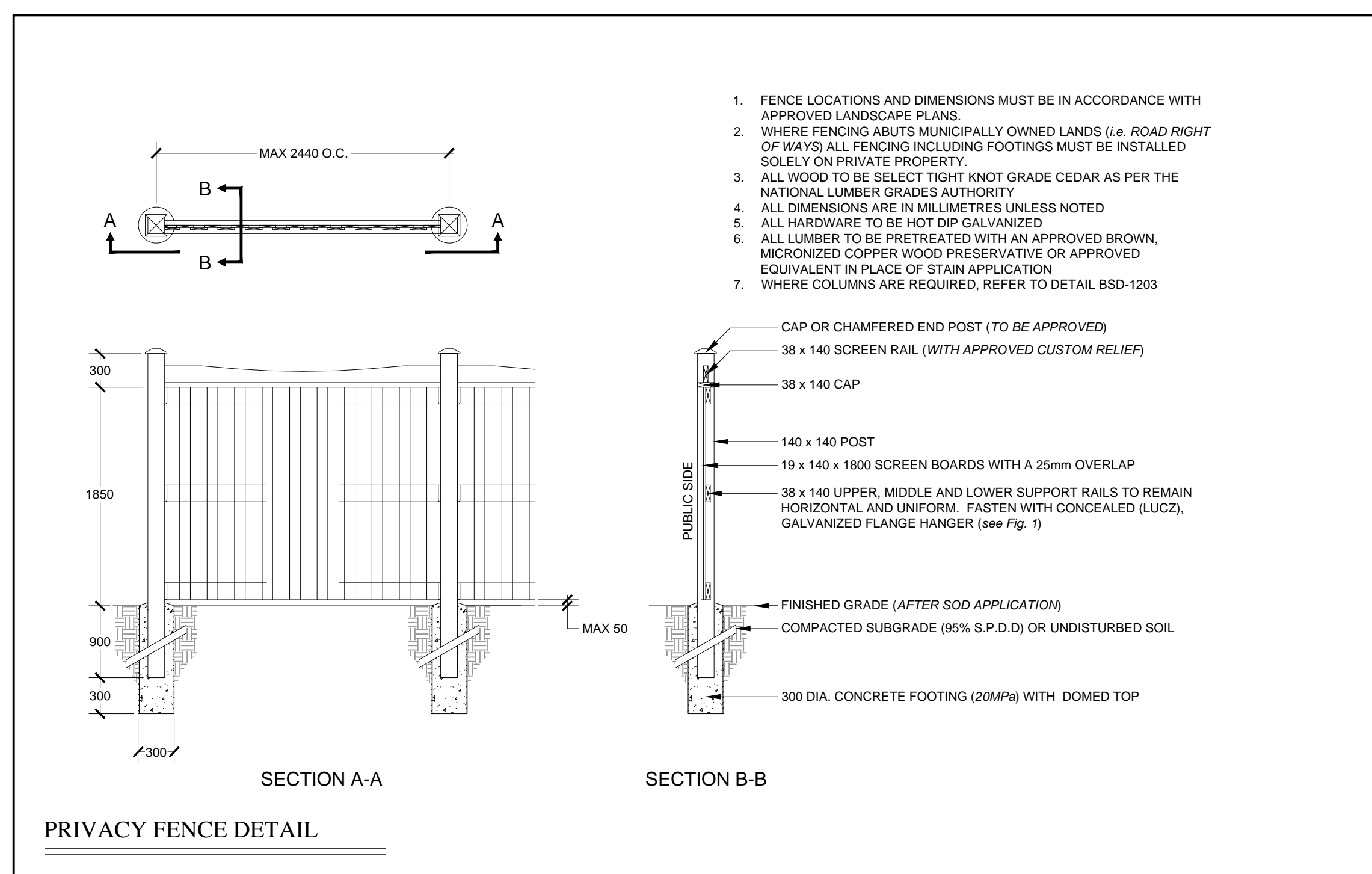
INSPECTION AND WARRANTY

- GIVE TIMELY NOTICE TO THE LANDSCAPE ARCHITECT FOR THE REQUIRED START UP SITE INSPECTION TO REVIEW SITE CONDITIONS AND SCHEDULE FOLLOW UP INSTALLATIONS.
- INSTALLATION OF PLANT MATERIAL PRIOR TO INSPECTION BY THE LANDSCAPE ARCHITECT WILL BE THE CONTRACTORS RESPONSIBILITY.
- THE LANDSCAPE ARCHITECT RESERVES THE RIGHT TO REJECT ANY PLANTS, WHETHER INSTALLED OR NOT, WHICH DO NOT CONFORM TO THE SPECIFICATIONS AND/OR SITE DRAWING. REMOVE ALL REJECTED PLANTS FROM THE SITE IMMEDIATELY. DO NOT REMOVE ANY LABELS FROM PLANTS UNTIL PLANTS HAVE BEEN INSPECTED AND APPROVED BY THE LANDSCAPE ARCHITECT.
- ALL PLANT MATERIAL AND WORKMANSHIP WILL BE INSPECTED AND IS UNDER WARRANTY FOR A MINIMUM OF TWO YEAR FROM DATE OF WRITTEN ACCEPTANCE. ALL PLANT MATERIAL MUST BE IN A HEALTHY, VIGOROUS GROWING CONDITION SATISFACTORY TO THE CONTRACT ADMINISTRATOR AT THE END OF THE WARRANTY PERIOD OR BE REPLACED AT THE CONTRACTORS EXPENSE.
- FINAL ACCEPTANCE OF THE PROJECT WILL BE CARRIED OUT UPON COMPLETION OF ALL WORK INCLUDED IN THE CONTRACT.

TOPSOIL REQUIREMENTS

- PROVIDE MINIMUM SOIL VOLUME PER TREE AT 0.45m DEPTH FOR STREET TREES (OR ABOVE UTILITIES) AND MAX. 0.9m IN OTHER AREAS:
  - 18 m<sup>3</sup> FOR LARGE TREES
  - 12 m<sup>3</sup> FOR SMALL TREES
- PREPARED SOIL MIXTURE FOR EACH TREE PITS AND SHRUBS SHALL CONSIST OF HIGH QUALITY SOIL:
  - SIX PARTS OF SANDY LOAM SOIL (50-60% SAND, 20-40% SILT, 6-10% CLAY, 2-5% ORGANIC), WITH A pH OF 7.5+ OR LESS, FREE OF CLAY LUMPS, DEBRIS, TOXIC SUBSTANCES, STONES, WOODY MATERIAL, WEED SEEDS AND GRASS ROOTS
  - ONE PART COARSE PULVERIZED CANADIAN PEAT MOSS
  - ONE PART OF WELL-ROTTED FARM MANURE
- \*ACIDIC SOIL IF REQUIRED (REFER TO PLANT LIST) SHALL CONSIST OF:
  - ONE PART OF SANDY LOAM SOIL WITH A pH OF MAX 5.5 IF REQUIRED REDUCE THE pH WITH +2kg/10m<sup>3</sup> AGRICULTURE SULPHUR OR +3kg/10m<sup>3</sup> IRON SULPHATE)
  - ONE PART COARSE SAND
  - ONE PART COARSE PULVERIZED SPHAGNUM PEAT MOSS
  - ONE PART PINE BARK OR PARTLY DECOMPOSED OAK LEAVES
- PREPARED SOIL MIXTURE FOR SOD AREAS SHALL CONSIST OF MIN. 20cm HIGH QUALITY SOIL:
  - SIX PARTS OF SANDY LOAM SOIL (50-60% SAND, 20-40% SILT, 6-10% CLAY, 2-5% ORGANIC), WITH A pH OF 7.5+ OR LESS, FREE OF CLAY LUMPS, DEBRIS, TOXIC SUBSTANCES, STONES, WOODY MATERIAL, WEED SEEDS AND GRASS ROOTS

NOTES



NUVO IRON  
13371 COLERAINE DR  
CALEDON, ON L7E 3B6  
PHONE: (905) 857-1010  
FAX: (905) 857-9356  
www.nuvoiron.com

SELECT DESIRED POST CAP

OPTIONS:  
 SPEAR  
 PYRAMID

SELECT DESIRED GATE OPTIONS:  
 GATE OPENING  
 LOCK BOX

SELECT DESIRED COLOUR:  
 HIGH GLOSS BLACK  
 WHITE  
 BROWN  
 GREEN  
 FLAT BLACK  
 TEXTURED BLACK

\*CUSTOM COLORS AVAILABLE UPON REQUEST

97 1/4" (2470 MM) CENTER TO CENTER

90 3/4" (2305 MM)

3 3/4" (95 MM) BETWEEN PICKETS

10 1/8" (257 MM)

41 7/8" (1064 MM)

60" (1524 MM)

LEVEL GROUND

CONCRETE FOOTINGS BELOW FROST LINE

8" (203 MM)

FRONT VIEW

PRE-CONCRETE RAILS

48" (1220 MM)

30" (762 MM)

8" (203 MM)

8" (203 MM)

SPECIFICATIONS:

POST RAILS AND PICKETS:  
- EXTRUDED MARINE ALUMINUM.  
- CHROMATE CONVERSION COATING.  
- ELECTROSTATICALLY APPLIED.  
- THERMALLY BONDED POLYESTER POWDER COATING.  
- MINIMUM FILM THICKNESS 2.5 mm.  
- E. COATING AVAILABLE.

PICKETS: 12 GAUGE STAMPED MARINE ALUMINUM.

WELDS: ALUMINUM

STANDARD PANEL WIDTH: 90 3/4" (2305 mm)

STANDARD PANEL HEIGHTS REFER TO NUVO IRON CATALOG.

STANDARD GATE OPENINGS INSIDE POSTS: - REFER TO NUVO IRON CATALOG.

WARRANTY 5 YEARS: - UPON REQUEST.

- EXTENDED WARRANTY AVAILABLE.

POSTS:  
- 3" X 3" (76 mm X 76 mm) 7 GAUGE.  
- STANDARD POST SPACING 97 1/4" (2470 mm)

O.C.  
RAILS:  
2 1/2" X 1 1/2" (63 mm X 38 mm) 11 GAUGE.

NOTES:

- INSTALLATION TO BE COMPLETED IN ACCORDANCE WITH MANUFACTURER'S SPECIFICATIONS.
- DO NOT SCALE DRAWING.
- THIS DRAWING IS INTENDED FOR USE BY ARCHITECTS, ENGINEERS, CONTRACTORS, CONSULTANTS AND DESIGN PROFESSIONALS. FOR PLANNING PURPOSES ONLY. THIS DRAWING MAY NOT BE USED FOR CONSTRUCTION.
- ALL INFORMATION CONTAINED HEREIN WAS CURRENT AT THE TIME OF DEVELOPMENT BUT MUST BE REVIEWED AND APPROVED BY THE PRODUCT MANUFACTURER TO BE CONSIDERED ACCURATE.
- CONTRACTOR'S NOTE: FOR PRODUCT AND COMPANY INFORMATION VISIT [www.CADdetails.com/info](http://www.CADdetails.com/info) AND ENTER REFERENCE NUMBER.

MEMORIAL COLLECTION - ALUMINUM

MEMORIAL COLLECTION: NUVO™ XXV ALUMINUM

COMMERCIAL PLASTIC LANDSCAPE EDGE MIN. 5" DEPTH

Prof. Edging w/Stake & Connector FROM "GRAVENHURST PLASTICS"; "GREENSTAR PLANT PRODUCT" (1888-747-4769) OR APPROVED EQUAL.

J.D.B. ASSOCIATES LTD.

Urban Designers  
Landscape Architects  
Arborsits

274 BURLTON AVE., SUITE 1201  
BARRIE, ONTARIO  
L4N 5W4

Fax: 705-722-5660  
Tel: 705-722-6278

SIMCOE COUNTY SERVICE CAMPUS - ORILLIA

2 BORLAND STREET EAST, ORILLIA, ON

LANDSCAPE PLAN DETAILS

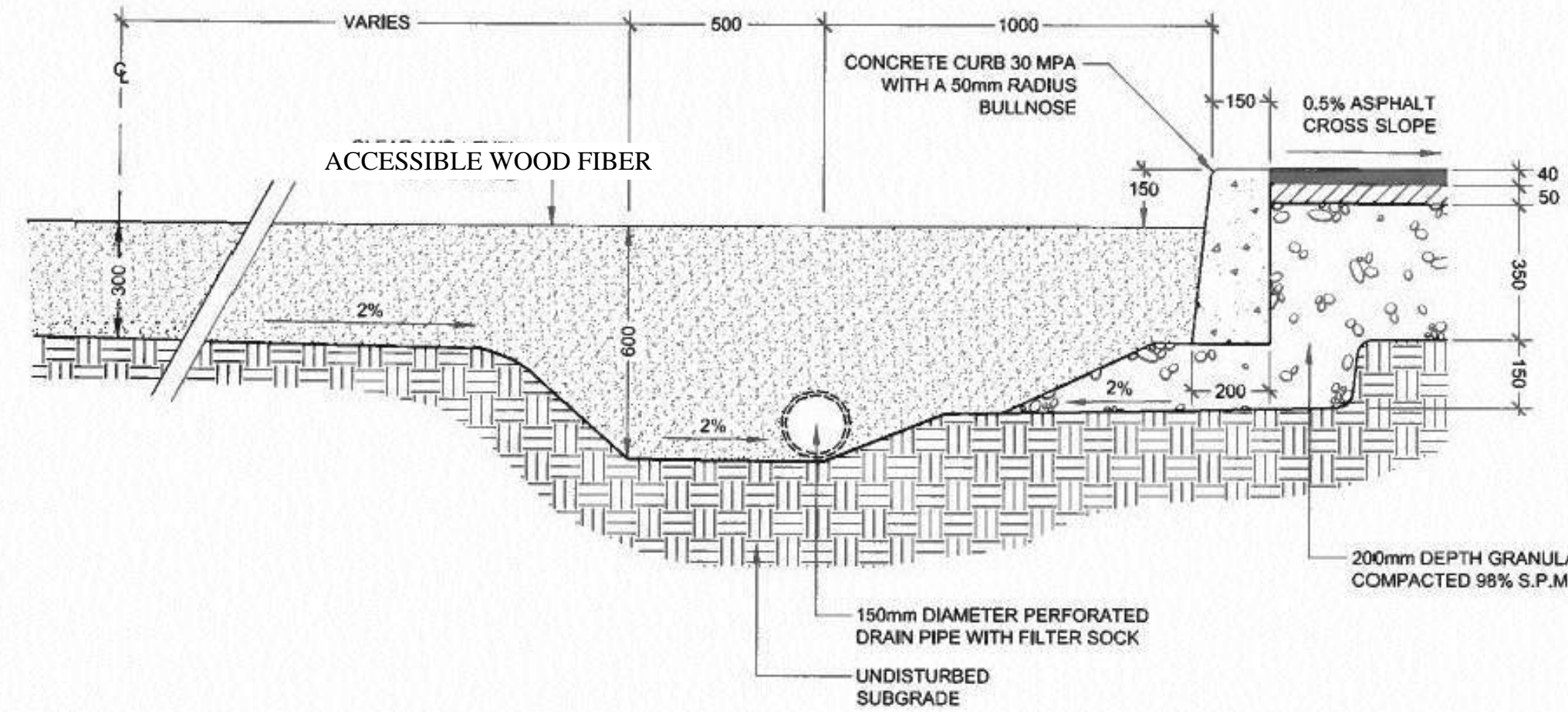
SCALE:	DATE:	DESIGNED BY:	REVIEWED BY:
1:500	October 7, 2020	SKT	NB
CITY FILE No.	OUR FILE REF. #	DRAWN BY:	LP-3
	24-20	SKT	





NOTE:  
ALL TOYS AND EQUIPMENTS TO BE INSTALLED ON CONCRETE FOOTINGS UNDER THE SUPERVISION OF THE LANDSCAPE ARCHITECT. REFER TO THE MANUFACTURER'S SPECIFICATIONS.

**PLAYGROUND DETAILS**



1. REFER TO BSD-1270 FOR LAYOUT AND RADIUS DIMENSIONS FROM CENTRE LINE TO FACE OF CURB.
2. SEE RELATED PLANS FOR SOLID DRAIN PIPE WITH A LEAD MINIMUM 150mm DIAMETER AND A MINIMUM 1% FALL TO CATCH BASIN / SWALE.
3. CURB CONTROL JOINTS 800mm O.C.
4. SLOPE SUB-GRADE RADIALLY FROM CENTRE LINE.

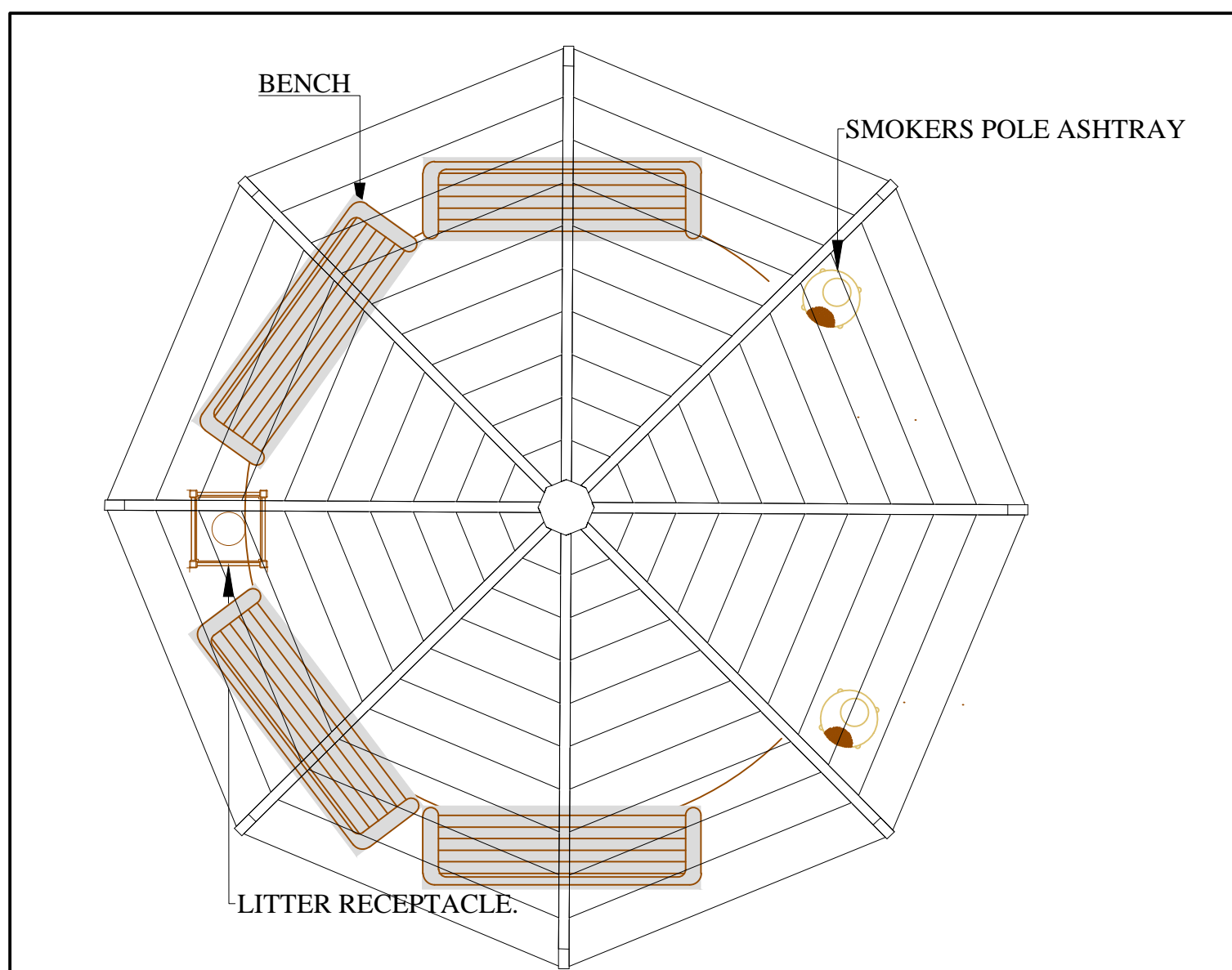
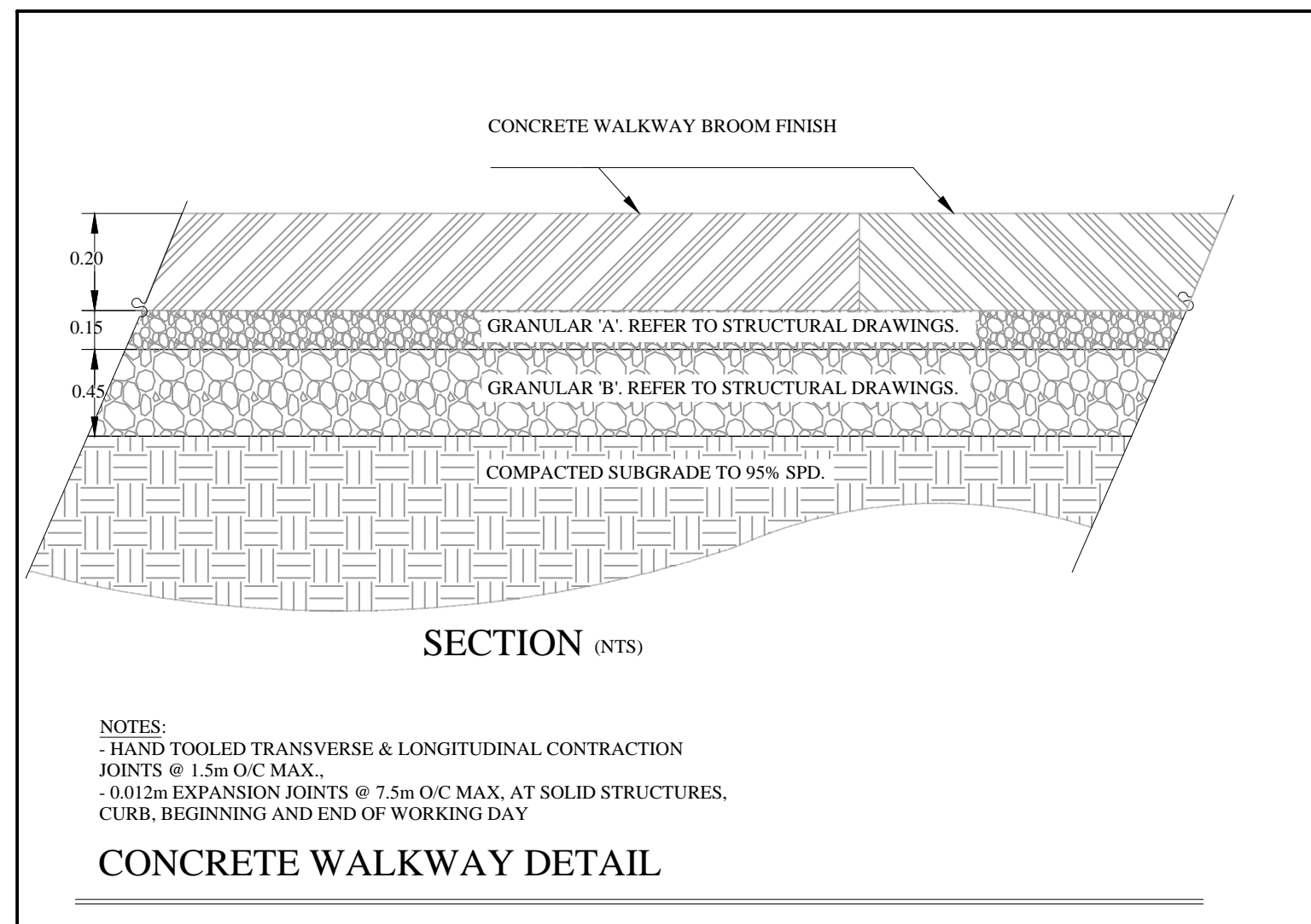
**Rubbermaid® Smoker's Pole - Black**

Streamlined space-saver controls smoker's litter.

- Fire-safe, weather resistant, powder-coated aluminum.
- Weighted base for stability.
- Self-extinguishing. No sand or water needed.
- Quick release for easy emptying.

SMOKERS POLE ASHTRAY BY ULINE OR SIMILAR.  
3333 JAMES SNOW PKWY NORTH MILTON, ON L9T 8L1

NOTE:  
GAZEBOS AND SMOKERS POLE ARE TO BE SUPPLIED AND INSTALLED BY OWNER. CONCRETE PAD TO BE PROVIDED.



**SMOKING AREA**



**GAZEBO WITH ATTACHED UTILITY SHED**

**Courtyard Bench with Back - 6'**

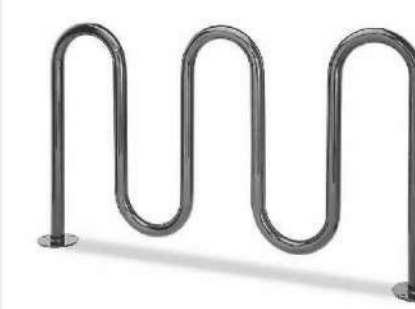


An elegant choice for hotels and shopping centers.

- Smooth, comfortable sloped seat and armrests. Pre-drilled for surface mounting.
- Glossy, weather resistant powder-coated finish.
- Durable, heavy-duty steel bar construction.
- Bench mounting hardware sold separately.

**BENCH DETAILS " U-LINE "**

**5-Loop Wave Style Bike Rack - 7 Bike Capacity, Black**



- Upscale stylish look for downtown shopping and business districts.
- For stadiums, parks and athletic fields.
  - 10-gauge steel with attractive powder coating.
  - 2 3/8" diameter bar.
  - Bike rack mounting hardware included.

More Images

SPECIFY COLOR:  BLACK

MODEL NO.	DESCRIPTION	SIZE L x W x H	BIKE CAP.	WT. (LBS.)	PRICE EACH	COLOR	IN STOCK SHIPS TODAY
H-2544BL	5-Loop	68 x 2 1/2 x 39"	7	80	\$590 \$563	Black	(1) ADD

SHIPS VIA MOTOR FREIGHT

**7 BIKE RACK DETAIL- ULINE.ca, MODEL H-2544BL**

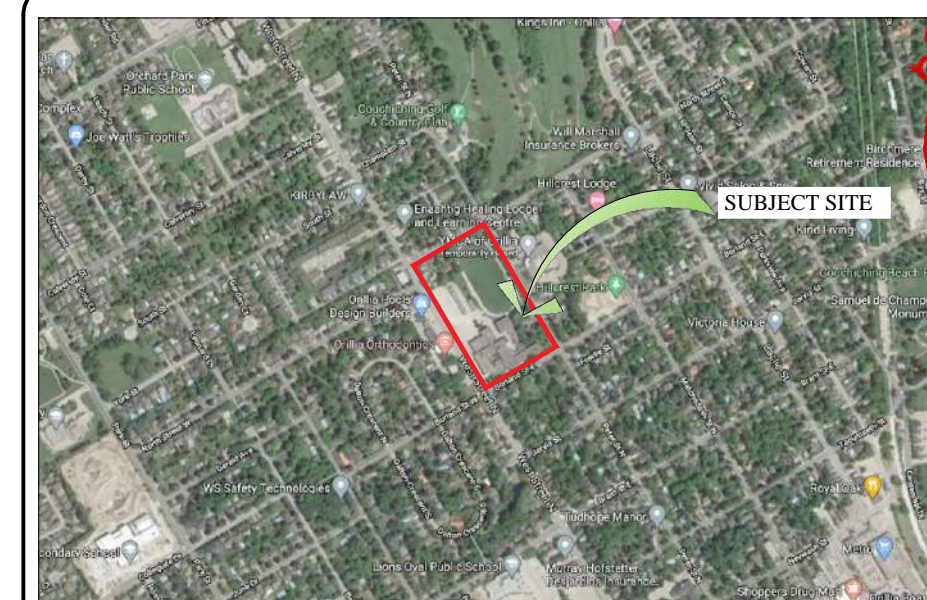
**Courtyard Trash Can - 32 Gallon**



Elegant trash can for patios, gardens or walkways. Recommended for hotels and shopping centers.

- Glossy, premium powder-coated finish is weather resistant and long lasting.
- Durable, heavy-duty steel bar construction.
- Reusable rigid plastic liner. Easy to empty and clean.
- Flat metal lid with 13" opening.
- Coordinating Courtyard Furniture available.
- Recommended trash liners: Use S-5103 or S-2053.

**LITTER RECEPTACLE- ULINE.ca, MODEL H-3022**



KEY MAP

N.T.S.

**GENERAL NOTES**

CONTRACTOR IS RESPONSIBLE FOR ALL LOCATES INCLUDING ALL UNDERGROUND SERVICES PRIOR TO ANY EXCAVATION OR INSTALLATIONS. THE CONTRACTOR IS REQUIRED TO NOTIFY THE VARIOUS UTILITY COMPANIES 48 HOURS PRIOR TO THE COMMENCEMENT OF ANY WORK.

ANY ACCOMPANYING DOCUMENTATION RELATING TO THE LANDSCAPE PLAN AND/OR PRESERVATION PLAN SUCH AS TENDER DOCUMENTS AND CHANGE NOTICES ARE TO BE ENDORSED BY J.D.B. ASSOCIATES LIMITED PRIOR TO THE BEGINNING OF ANY SITE WORKS. IN THE EVENT THAT A DISCREPANCY THE DRAWING SHALL BE ASSUMED CORRECT.

IT IS THE RESPONSIBILITY OF THE PERSON OR PERSONS RESPONSIBLE FOR THE CONSTRUCTED WORKS TO NOTIFY THE LANDSCAPE ARCHITECT WHEN PREPARED FOR ANY REQUIRED INSPECTIONS AND SIGN OFFS.

SCHEDULED MEETINGS SHALL TAKE PLACE AT THE CLOSEST MUTUALLY CONVENIENT TIME.

No.	REVISION	DATE	APRVD.
1.	SUBMITTED FOR SPA	November 13, 2020	SJT

ALL DRAWINGS AND SPECIFICATIONS ARE INSTRUMENTS OF SERVICE AND ARE THE PROPERTY OF J. D. B. ASSOCIATES LIMITED. DRAWINGS ARE NOT TO BE MODIFIED AND/OR REPRODUCED WITHOUT THE WRITTEN CONSENT OF J.D.B. ASSOCIATES LIMITED. REPRODUCTION OF DRAWINGS IN ANY FORM WITHOUT THE CONSENT OF J.D.B. ASSOCIATES LIMITED VOIDS THE DRAWING AT WHICH TIME J.D.B. ASSOCIATES LIMITED ACCEPTS NO LIABILITY FOR THE DRAWING CONTENT OR WORKS RESULTING FROM SAID REPRODUCTION. DRAWINGS MAY BE REPRODUCED BY MUNICIPAL AND GOVERNMENT AGENCIES RESPONSIBLE FOR APPROVALS FOR THEIR OWN USE. J. D. B. ASSOCIATES RESERVES THE RIGHT TO WITHDRAW ANY DRAWING(S) FROM GOVERNMENT OR MUNICIPAL AGENCIES WHETHER APPROVED OR NOT IN THE EVENT THAT ACCOUNTS ARE NOT SETTLED OR REMAIN OUTSTANDING.

IT IS THE RESPONSIBILITY OF THE CONTRACTOR TO VERIFY ALL DIMENSIONS ON THE SITE AND REPORT ANY DISCREPANCIES OR VARIATIONS FROM THE SUPPLIED INFORMATION TO THE LANDSCAPE ARCHITECT WITH THE PROJECT. J. D. B. ASSOCIATES LIMITED IS NOT RESPONSIBLE FOR THE ACCURACY OF SURVEY, ARCHITECTURAL, MECHANICAL, ENGINEERING OR ELECTRICAL INFORMATION SHOWN ON THE DRAWING. FOR FURTHER INFORMATION REFER TO APPROPRIATE SURVEY, ARCHITECTURAL, MECHANICAL, ENGINEERING OR ELECTRICAL DRAWINGS PRIOR TO PROCEEDING WITH ANY WORKS.

THIS DRAWING IS NOT TO BE SCALED.

BASE INFORMATION PROVIDED BY:  
MCLARCHITECTS  
48 ALLIANCE BLVD, UNIT 110 BARRE, ONTARIO  
L4M 5K3 WWW.MCLARCHITECTS.CA

BASE PLAN REVISED: September 2020

LANDSCAPE ARCHITECTS STAMP  
J.D.B. ASSOCIATES LTD.

**JDB ASSOCIATES LTD.**  
Urban Designers  
Landscape Architects  
Arborists  
274 Burton Ave., Suite 1201  
Barrie, Ontario  
L4N 5W4  
Fax: 705-722-5660  
Tel: 705-722-6278

**SIMCOE COUNTY SERVICE CAMPUS - ORILLIA**  
2 BORLAND STREET EAST, ORILLIA, ON

**SITE FURNITURE DETAILS**

SCALE:	DATE:	DESIGNED BY:	REVIEWED BY:
1:500	October 7, 2020	SJT	NB
CITY FILE No.	OUR FILE REF. #	DRAWN BY:	
	24-20	SJT	LP-4

NOTE:  
ALL SITE FURNITURE WILL BE SUPPLIED AND INSTALLED BY THE OWNER.



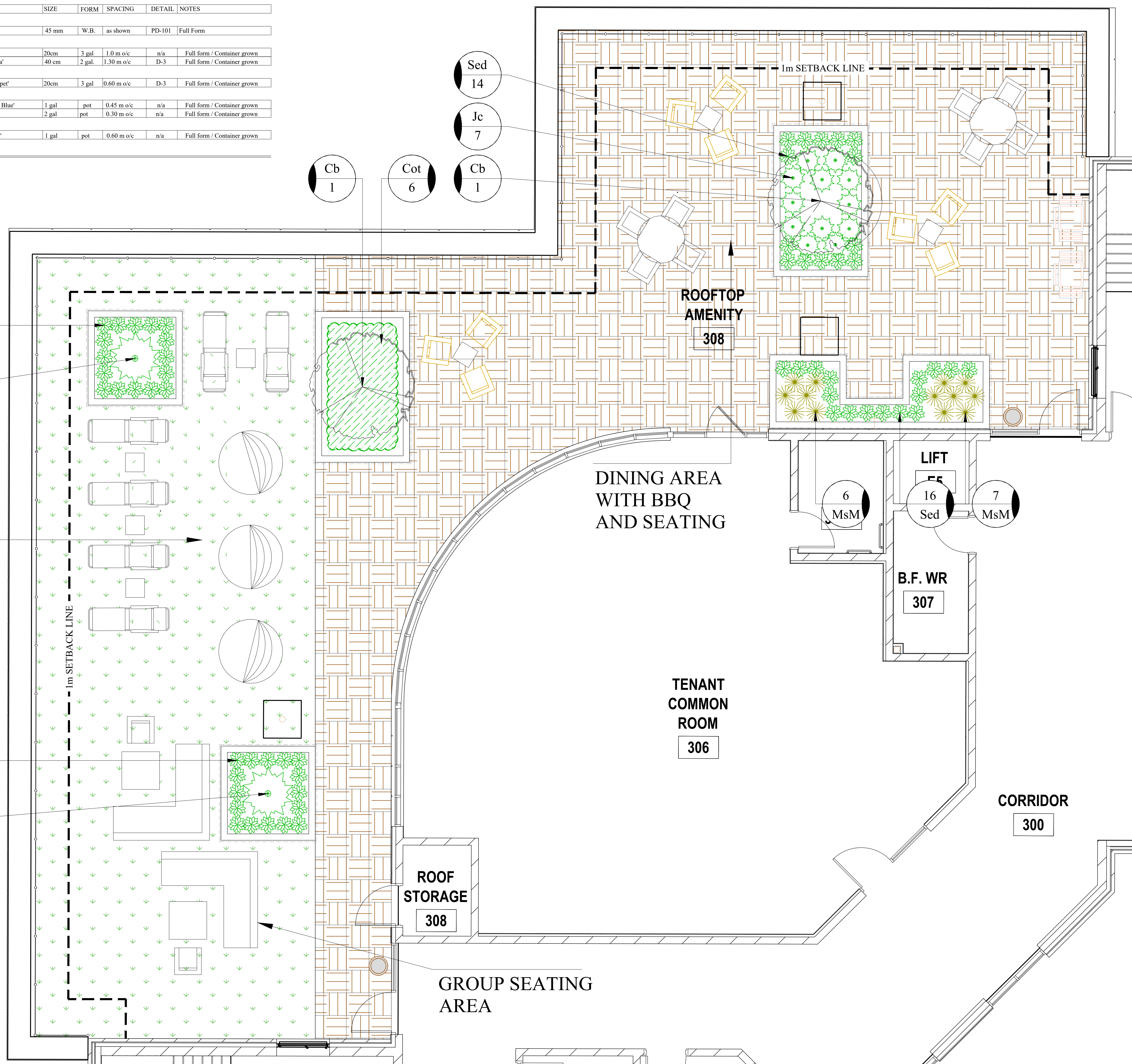
CODE	QNTY	COMMON NAME	BOTANICAL NAME	SIZE	FORM	SPACING	DETAIL	NOTES
<b>TREES</b>								
Cb	2	BLUE BEECH	Carpinus caroliniana	45 mm	W.B.	as shown	PD-101	Full Form
<b>BROADLEAF EVERGREENS</b>								
Cot	6	BEARBERRY COTONEASTER	Cotoneaster dammeri	20cm	3 gal	1.0 m o/c	n/a	Full form / Container grown
Rh	2	HAAGA RHODODENDRON	Rhododendron x marjatta 'Haaga'	40 cm	2 gal.	1.30 m o/c	n/a	Full form / Container grown
<b>SPREADING EVERGREENS</b>								
Jc	7	GREEN CARPET JUNIPER	Juniperus communis 'Green Carpet'	20cm	3 gal	0.60 m o/c	D-3	Full form / Container grown
<b>PERENNIALS</b>								
La	32	HIDCOTE BLUE ENGLISH LAVENDER	Lavandula angustifolia 'Hidcote Blue'	1 gal	pot	0.45 m o/c	n/a	Full form / Container grown
Sed	30	BIRTHDAY PARTY STONECROP	Sedum x 'Birthday Party'	2 gal	pot	0.30 m o/c	n/a	Full form / Container grown
<b>GRASSES</b>								
MsM	13	MALEPARTUS MAIDEN GRASS	Miscanthus sinensis 'Malepartus'	1 gal	pot	0.60 m o/c	n/a	Full form / Container grown

**PLANT LIST** REFER TO PLANTING NOTES AND DETAILS ON LP-2

**LEGEND**

- DECIDUOUS TREES
- EVERGREEN SHRUBS
- PERENNIAL PLANTINGS
- ORNAMENTAL GRASSES
- TANNING CHAIRS
- DAY BEDS
- COUCH STYLE GROUP SEATING
- DINING SEATING
- BBQ
- WOODEN RAISED PLANTER
- TRASH RECEPTACLE

**TANNING / LOUNGING AREA WITH CHAIRS AND DAYBEDS**



**KEY MAP** N.T.S.

**GENERAL NOTES**

CONTRACTOR IS RESPONSIBLE FOR ALL LOCATES INCLUDING ALL UNDERGROUND SERVICES PRIOR TO ANY EXCAVATION OR INSTALLATIONS. THE CONTRACTOR IS REQUIRED TO NOTIFY THE VARIOUS UTILITY COMPANIES 48 HOURS PRIOR TO THE COMMENCEMENT OF ANY WORK.

ANY ACCOMPANYING DOCUMENTATION RELATING TO THE LANDSCAPE PLAN AND/OR PRESERVATION PLAN SUCH AS TENDER DOCUMENTS AND CHANGE NOTICES ARE TO BE ENDORSED BY J.D.B. ASSOCIATES LIMITED PRIOR TO THE BEGINNING OF ANY SITE WORKS. IN THE EVENT THAT OF A DISCREPANCY THE DRAWING SHALL BE ASSUMED CORRECT.

IT IS THE RESPONSIBILITY OF THE PERSON OR PERSONS RESPONSIBLE FOR THE CONSTRUCTED WORKS TO NOTIFY THE LANDSCAPE ARCHITECT WHEN PREPARED FOR ANY REQUIRED INSPECTIONS AND SIGN OFFS.

SCHEDULED MEETINGS SHALL TAKE PLACE AT THE CLOSEST MUTUALLY CONVENIENT TIME.

No.	REVISION	DATE	APRVD.
1.	SUBMITTED FOR SPA	November 13, 2020	SJT

ALL DRAWINGS AND SPECIFICATIONS ARE INSTRUMENTS OF SERVICE AND ARE THE PROPERTY OF J. D. B. ASSOCIATES LIMITED. DRAWINGS ARE NOT TO BE MODIFIED AND/OR REPRODUCED WITHOUT THE WRITTEN CONSENT OF J.D.B. ASSOCIATES LIMITED. REPRODUCTION OF DRAWINGS IN ANY FORM WITHOUT THE CONSENT OF J.D.B. ASSOCIATES LIMITED VOIDS THE DRAWING AT WHICH TIME J.D.B. ASSOCIATES LIMITED ACCEPTS NO LIABILITY FOR THE DRAWING CONTENT OR WORKS RESULTING FROM SAID REPRODUCTION. DRAWINGS MAY BE REPRODUCED BY MUNICIPAL AND GOVERNMENT AGENCIES RESPONSIBLE FOR APPROVALS FOR THEIR OWN USE. J. D. B. ASSOCIATES RESERVES THE RIGHT TO WITHDRAW ANY DRAWING(S) FROM GOVERNMENT OR MUNICIPAL AGENCIES WHETHER APPROVED OR NOT IN THE EVENT THAT ACCOUNTS ARE NOT SETTLED OR REMAIN OUTSTANDING.

IT IS THE RESPONSIBILITY OF THE CONTRACTOR TO VERIFY ALL DIMENSIONS ON THE SITE AND REPORT ANY DISCREPANCIES OR VARIATIONS FROM THE SUPPLIED INFORMATION TO THE LANDSCAPE ARCHITECT WITH THE PROJECT. J. D. B. ASSOCIATES LIMITED IS NOT RESPONSIBLE FOR THE ACCURACY OF SURVEY, ARCHITECTURAL, MECHANICAL, ENGINEERING OR ELECTRICAL INFORMATION SHOWN ON THE DRAWING. FOR FURTHER INFORMATION REFER TO APPROPRIATE SURVEY, ARCHITECTURAL, MECHANICAL, ENGINEERING OR ELECTRICAL DRAWINGS PRIOR TO PROCEEDING WITH ANY WORKS.

THIS DRAWING IS NOT TO BE SCALED.

BASE INFORMATION PROVIDED BY:  
MCLARCHITECTS  
48 ALLIANCE BLVD, UNIT 110 BARRIE, ONTARIO  
L4M 5K3 WWW.MCLARCHITECTS.CA

BASE PLAN REVISED: September 2020

LANDSCAPE ARCHITECTS STAMP

**JDB ASSOCIATES LTD.**

Urban Designers  
Landscape Architects  
Arborists

274 Burton Ave., Suite 1201  
Barrie, Ontario  
L4N 5W4

Fax: 705-722-5660  
Tel: 705-722-6278

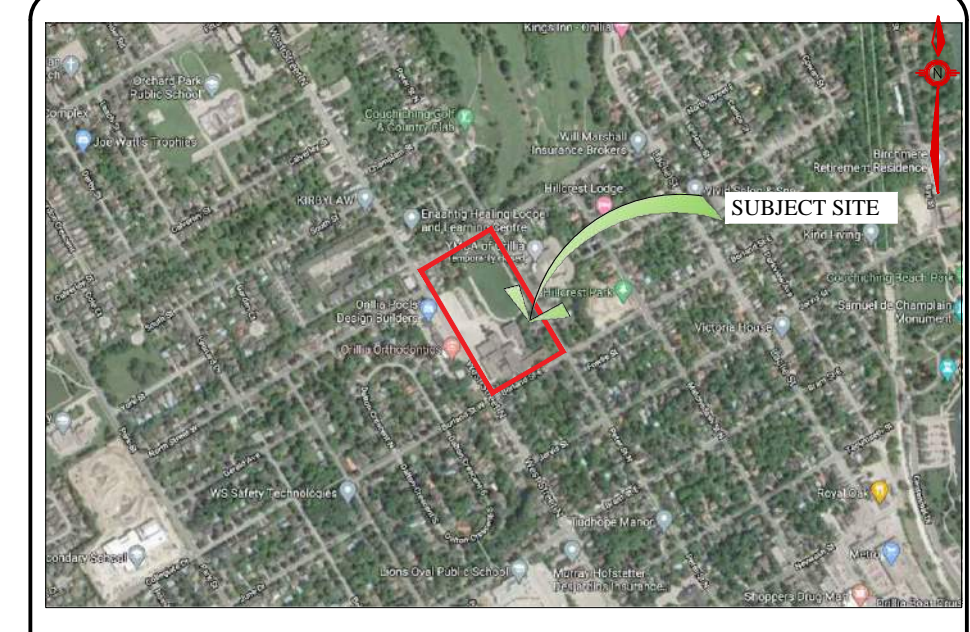
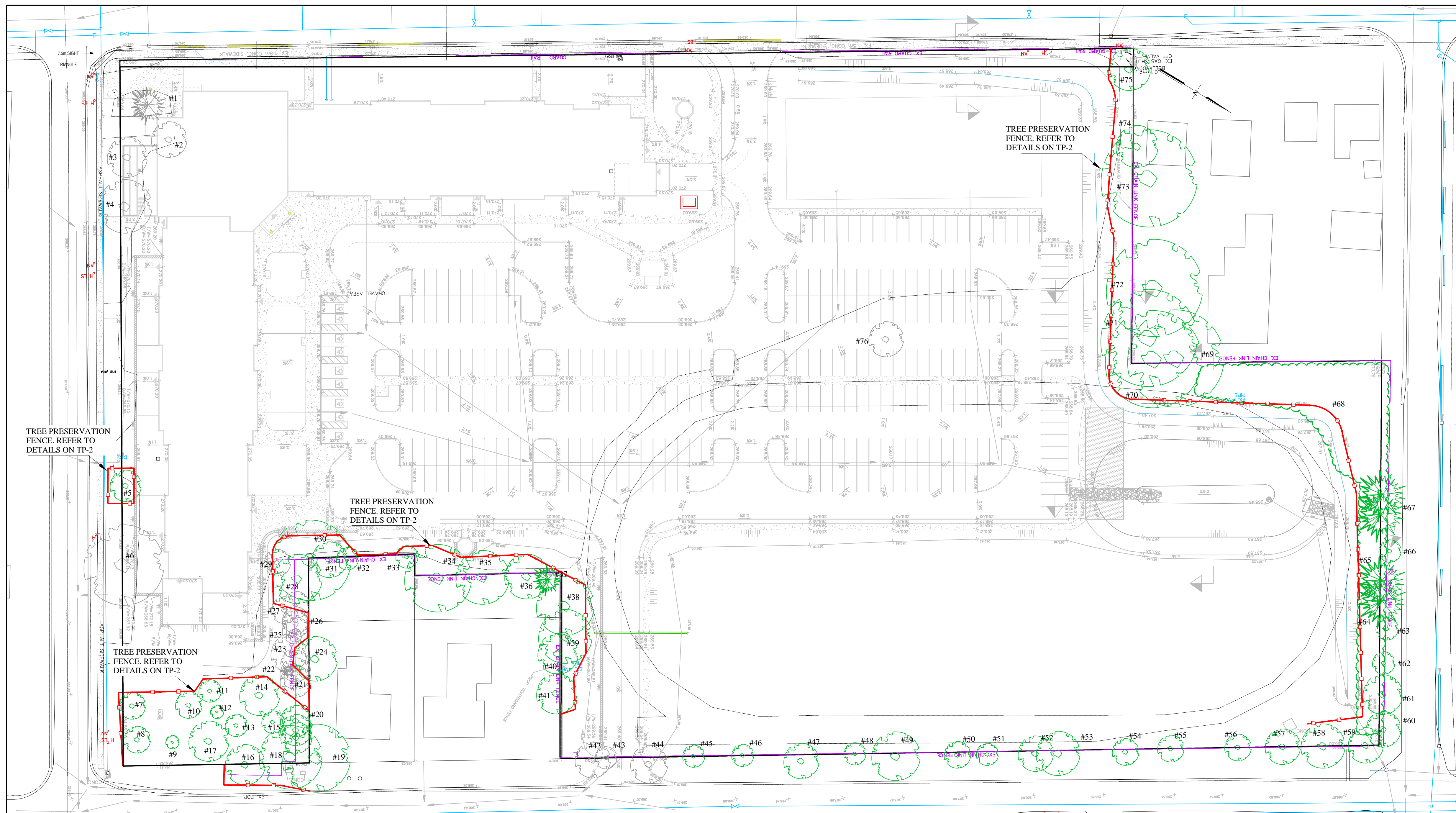
**SIMCOE COUNTY SERVICE CAMPUS - ORILLIA**

2 BORLAND STREET EAST, ORILLIA, ON

**THIRD FLOOR AMENITY ROOFTOP PLAN**

SCALE:	DATE:	DESIGNED BY:	REVIEWED BY:
1:50	October 7, 2020	MC	NB
CITY FILE No.	OUR FILE REF. #	DRAWN BY:	
	24-20	MC	LP-5





KEY MAP N.T.S.

GENERAL NOTES

CONTRACTOR IS RESPONSIBLE FOR ALL LOCATES INCLUDING ALL UNDERGROUND SERVICES PRIOR TO ANY EXCAVATION OR INSTALLATIONS. THE CONTRACTOR IS REQUIRED TO NOTIFY THE VARIOUS UTILITY COMPANIES 48 HOURS PRIOR TO THE COMMENCEMENT OF ANY WORK.

ANY ACCOMPANYING DOCUMENTATION RELATING TO THE LANDSCAPE PLAN AND/OR PRESERVATION PLAN SUCH AS TENDER DOCUMENTS AND CHANGE NOTICES ARE TO BE ENDORSED BY J.D.B. ASSOCIATES LIMITED PRIOR TO THE BEGINNING OF ANY SITE WORKS. IN THE EVENT THAT OF A DISCREPANCY THE DRAWING SHALL BE ASSUMED CORRECT.

IT IS THE RESPONSIBILITY OF THE PERSON OR PERSONS RESPONSIBLE FOR THE CONSTRUCTED WORKS TO NOTIFY THE LANDSCAPE ARCHITECT WHEN PREPARED FOR ANY REQUIRED INSPECTIONS AND SIGN OFFS.

SCHEDULED MEETINGS SHALL TAKE PLACE AT THE CLOSEST MUTUALLY CONVENIENT TIME.

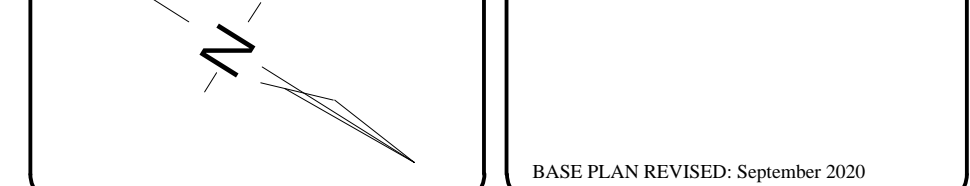
No.	REVISION	DATE	APRVD.
1.	SUBMITTED FOR SPA	November 13, 2020	SJT

ALL DRAWINGS AND SPECIFICATIONS ARE INSTRUMENTS OF SERVICE AND ARE THE PROPERTY OF J. D. B. ASSOCIATES LIMITED. DRAWINGS ARE NOT TO BE MODIFIED AND/OR REPRODUCED WITHOUT THE WRITTEN CONSENT OF J.D.B. ASSOCIATES LIMITED. REPRODUCTION OF DRAWINGS IN ANY FORM WITHOUT THE CONSENT OF J.D.B. ASSOCIATES LIMITED VOIDS THE DRAWING AT WHICH TIME J.D.B. ASSOCIATES LIMITED ACCEPTS NO LIABILITY FOR THE DRAWING CONTENT OR WORKS RESULTING FROM SAID REPRODUCTION. DRAWINGS MAY BE REPRODUCED BY MUNICIPAL AND GOVERNMENT AGENCIES RESPONSIBLE FOR APPROVALS FOR THEIR OWN USE. J. D. B. ASSOCIATES RESERVES THE RIGHT TO WITHDRAW ANY DRAWING(S) FROM GOVERNMENT OR MUNICIPAL AGENCIES WHETHER APPROVED OR NOT IN THE EVENT THAT ACCOUNTS ARE NOT SETTLED OR REMAIN OUTSTANDING.

IT IS THE RESPONSIBILITY OF THE CONTRACTOR TO VERIFY ALL DIMENSIONS ON THE SITE AND REPORT ANY DISCREPANCIES OR VARIATIONS FROM THE SUPPLIED INFORMATION TO THE LANDSCAPE ARCHITECT WITH THE PROJECT. J. D. B. ASSOCIATES LIMITED IS NOT RESPONSIBLE FOR THE ACCURACY OF SURVEY, ARCHITECTURAL, MECHANICAL, ENGINEERING OR ELECTRICAL INFORMATION SHOWN ON THE DRAWING. FOR FURTHER INFORMATION REFER TO APPROPRIATE SURVEY, ARCHITECTURAL, MECHANICAL, ENGINEERING OR ELECTRICAL DRAWINGS PRIOR TO PROCEEDING WITH ANY WORKS.

THIS DRAWING IS NOT TO BE SCALED.

BASE INFORMATION PROVIDED BY:  
MCLARCHITECTS  
48 ALLIANCE BLVD., UNIT 110 BARRE, ONTARIO  
L4M 5K3 WWW.MCLARCHITECTS.CA



BASE PLAN REVISED: September 2020

TREE INVENTORY PLAN

1:500

**LEGEND**

- TREES TO BE PRESERVED (Green circle with cross)
- TREES TO BE REMOVED (Red circle with cross)
- TREE PRESERVATION FENCE (Red line)

Orillia Simcoe County October 2020

Tree #	No of trees	Botanical Name	Common name	DBH (cm)	Height (m)	Crown Ø (m)	Maturity	Health condition	Location	Preservation
1	1	<i>Pinus nigra</i>	Autian Pine	53	12	8	Mature	good	on site	removed
2	1	<i>Acer platanoides</i>	Norway Maple	38	10	8	Mature	good	on site	removed
3	1	<i>Quercus rubra</i>	Red Oak	36	12	9	Mature	good	on site	removed
4	1	<i>Acer saccharum</i>	Sugar maple	80	14	12	Mature	good	on site	removed
5	1	<i>Acer saccharum</i>	Sugar maple	30	12	7	Mature	good	on site	preserved
6	1	<i>Acer saccharum</i>	Sugar maple	85	14	18	Mature	good	on site	removed
7	1	<i>Acer platanoides</i>	Krismon King Norway Maple	25	12	6	Mature	fair-good	exposed roots	on site preserved
8	1	<i>Acer platanoides</i>	Krismon King Norway Maple	23	12	6	Mature	good	on site	preserved
9	1	<i>Acer rubrum</i>	Red Maple	9	5	3	Immature	good	on site	preserved
10	1	<i>Tilia americana</i>	Basewood	33	8	6	Mature	fair	remove adjacent Manitoba Maple seedling	on site preserved
11	1	<i>Malus sp.</i>	Crab Apple	20	8	5	Mature	fair	prune opt ornamental	on site preserved
12	1	<i>Ambrosia arbores</i>	Servicetree	5	4	2	Immature	good	on site	preserved
13	1	<i>Acer platanoides</i>	Krismon King Norway Maple	14	7	5	Immature	fair	base bark injuries	on site preserved
14	1	<i>Tilia americana</i>	Basewood	44	14	9	Mature	good	on site	preserved
15	1	<i>Acer platanoides</i>	Norway Maple	13	10	5	Immature	good	on site	preserved
16	1	<i>Acer platanoides</i>	Krismon King Norway Maple	35	14	9	Mature	fair-poor	base bark injuries	on site preserved
17	1	<i>Tilia americana</i>	Basewood	27	12	7	Mature	good	on site	preserved
18	1	<i>Acer saccharum</i>	Sugar maple	65	20	14	Mature	good	remove vines	on site preserved
19	1	<i>Acer saccharum</i>	Sugar maple	80	20	15	Mature	good	1.5m on adjacent land	preserved
20	2	<i>Prunus americana</i>	American Ash	16	12	7	Immature	fair	on fence line	preserved
21	1	<i>Ulmus americana</i>	American Elm	18	12	7	Immature	fair	on fence line	preserved
22	1	<i>Prunus americana</i>	American Ash	18, 16, 16	12	7	Immature	2 poor, 1 dead	vines	on fence line removed
23	1	<i>Ulmus americana</i>	American Elm	23	12	7	Mature	poor	vines	on fence line removed

22	1	<i>Pinus resinosa</i>	Red Pine	12	3	16	Immature	poor	vines	1.8m to fence	removed	
23	1	<i>Morus alba</i>	White Mulberry	21	10	8	Mature	poor	vines	1.5m to fence	removed	
24	1	<i>Acer saccharum</i>	Sugar maple	70	18	10	Mature	good	on site	1.5m on adjacent land	preserved	
25	1	<i>Prunus americana</i>	American Ash	35	-	-	Mature	± dead	on fence line	removed		
26	4	<i>Acer platanoides</i>	Norway Maple	25	10	6	Mature	fair	on fence line	removed		
27	1	<i>Acer platanoides</i>	Norway Maple	12	10	6	Immature	good	on site	2.6m to fence	removed	
28	1	<i>Quercus alba</i>	White Oak	38	14	11	Mature	good	on fence line	preserved		
29	1	<i>Acer platanoides</i>	Norway Maple	3+9	8	6	Mature	fair	clump	on site	removed	
30	1	<i>Acer platanoides</i>	Norway Maple	70	16	18	Mature	good	on site	0.5m on adjacent land	preserved	
31	1	<i>Acer saccharum</i>	Sugar maple	29	12	8	Mature	good	on site	0.5m on adjacent land	preserved	
32	1	<i>Acer platanoides</i>	Norway Maple	-10	8	5	Immature	fair	on site	0.5m on adjacent land	preserved	
33	1	<i>Prunus americana</i>	American Ash	11	8	5	Immature	fair	on site	0.5m on adjacent land	preserved	
34	1	<i>Acer saccharum</i>	Sugar maple	60	14	15	Mature	good	on site	0.5m on adjacent land	preserved	
35	1	<i>Acer saccharum</i>	Sugar maple	70	12	15	Mature	fair	dead branches	on site	0.5m on adjacent land	preserved
36	1	<i>Acer saccharum</i>	Sugar maple	60	12	15	Mature	fair	on site	0.5m on adjacent land	preserved	
37	1	<i>Pinus strobus</i>	White Pine	37	8	7	Mature	fair	on site	1.5m on adjacent land	preserved	
38	1	<i>Acer saccharum</i>	Sugar maple	60	12	13	Mature	good	on site	0.5m to fence	preserved	
39	1	<i>Acer saccharum</i>	Sugar maple	70	12	12	Mature	good	on site	0.5m to fence	preserved	
40	1	<i>Acer platanoides</i>	Norway Maple	30	12	9	Mature	good	on site	0.5m on adjacent land	preserved	
41	1	<i>Acer platanoides</i>	Norway Maple	30	8	9	Mature	good	on site	0.5m on adjacent land	preserved	
42	1	<i>Acer platanoides</i>	Norway Maple	20	10	8	Mature	fair	on site	0.5m on adjacent land	removed	
43	1	<i>Acer saccharum</i>	Sugar maple	10	8	5	Immature	fair	on fence line	removed		
44	1	<i>Acer platanoides</i>	Norway Maple	20	10	9	Mature	fair	on site	1.4m on adjacent land	removed	
45	1	<i>Prunus americana</i>	American Ash	12	8	5	Immature	fair	clump	on fence line	removed	
46	1	<i>Prunus americana</i>	American Ash	20	10	4	Mature	fair	clump	0.3m on adjacent land	preserved	
47	1	<i>Acer saccharum</i>	Sugar maple	35	12	8	Mature	good	on site	1.5m on adjacent land	preserved	
48	1	<i>Acer platanoides</i>	Norway Maple	10	7	5	Immature	fair	on fence line	preserved		
49	3	<i>Prunus americana</i>	American Ash	30, 20, 20	12	11	Mature	fair	clump	0.6m on adjacent land	preserved	
50	1	<i>Acer saccharum</i>	Sugar maple	10	10	6	Immature	fair	on site	0.6m on adjacent land	preserved	
51	1	<i>Prunus americana</i>	American Ash	13	10	5	Immature	fair-poor	on fence line	preserved		
52	1	<i>Prunus americana</i>	American Ash	15-15	10	8	Immature	fair	forked at base	on fence line	preserved	
53	1	<i>Acer saccharum</i>	Sugar maple	10	10	6	Immature	fair	on site	1.0m on adjacent land	preserved	
54	3	<i>Prunus americana</i>	American Ash	12	12	6	Immature	fair	on site	1.0m on adjacent land	preserved	
55	1	<i>Prunus americana</i>	American Ash	24	10	7	Mature	poor	on site	0.5m on adjacent land	preserved	
56	1	<i>Prunus americana</i>	American Ash	20	12	6	Mature	poor	vines	on site	0.5m on adjacent land	preserved
56	1	<i>Juglans nigra</i>	Black Walnut	22	12	6	Mature	poor	vines	on fence line	preserved	
57	1	<i>Acer saccharum</i>	Sugar maple	25	12	8	Mature	fair	on site	1.3m on adjacent land	preserved	
58	1	<i>Acer platanoides</i>	Norway Maple	30	12	10	Mature	fair	on site	1.3m on adjacent land	preserved	
59-60	1	<i>Acer negundo</i>	Manitoba Maple	7+15	12	8	Immature	poor	on site	0.5m on adjacent land	preserved	
61	group	<i>Acer platanoides</i>	Norway Maple	15	10	9	Immature	fair	on site	0.5m on adjacent land	preserved	
62	1	<i>Acer platanoides</i>	Norway Maple	27	8	5	Mature	fair	on fence line	preserved		
63	1	<i>Acer negundo</i>	Manitoba Maple	22	10	12	Mature	poor	on site	0.5m on adjacent land	preserved	
64	1	<i>Pinus resinosa</i>	Red Pine	42	12	12	Mature	fair	on site	1.2m to fence	preserved	
65	1	<i>Pinus resinosa</i>	Red Pine	42	12	12	Mature	fair	on site	1.2m to fence	preserved	
66	1	<i>Acer platanoides</i>	Norway Maple	27	8	5	Mature	fair	on fence line	preserved		
67	4	<i>Pinus sylvatica</i>	Scots Pine	28, 20, 27, 30	12	12	Mature	fair	on site	1.2m to fence	preserved	
68	group	<i>Acer platanoides</i>	Norway Maple	-10	12	12	Immature	fair	on site	0.5m on adjacent land	preserved	
69	1	<i>Quercus rubra</i>	Red Oak	50	18	20	Mature	good	on site	1.2m on adjacent land	preserved	
70	1	<i>Acer saccharum</i>	Sugar maple	50	18	20	Mature	good	on site	0.7m on adjacent land	preserved	
71	1	<i>Acer saccharum</i>	Sugar maple	18	10	6	Immature	good	on site	1.2m on adjacent land	preserved	
72	1	<i>Acer saccharum</i>	Sugar maple	70	12	12	Mature	good	on site	3.0m on adjacent land	preserved	
73	1	<i>Acer saccharum</i>	Sugar maple	70	12	19	Mature	good	on site	2.5m on adjacent land	preserved	
74	1	<i>Juglans nigra</i>	Black Walnut	25	12	9	Mature	fair	on site	0.2m on adjacent land	preserved	
75	1	<i>Acer negundo</i>	Manitoba Maple	18	10	9	Immature	poor	on site	0.2m on adjacent land	preserved	
76	1	<i>Acer saccharum</i>	Sugar maple	40	12	8	Mature	fair	on site	0.2m on adjacent land	removed	

JDB ASSOCIATES LTD.

Urban Designers  
Landscape Architects  
Arborists

274 Burton Ave., Suite 1201  
Barrie, Ontario  
L4N 5W4

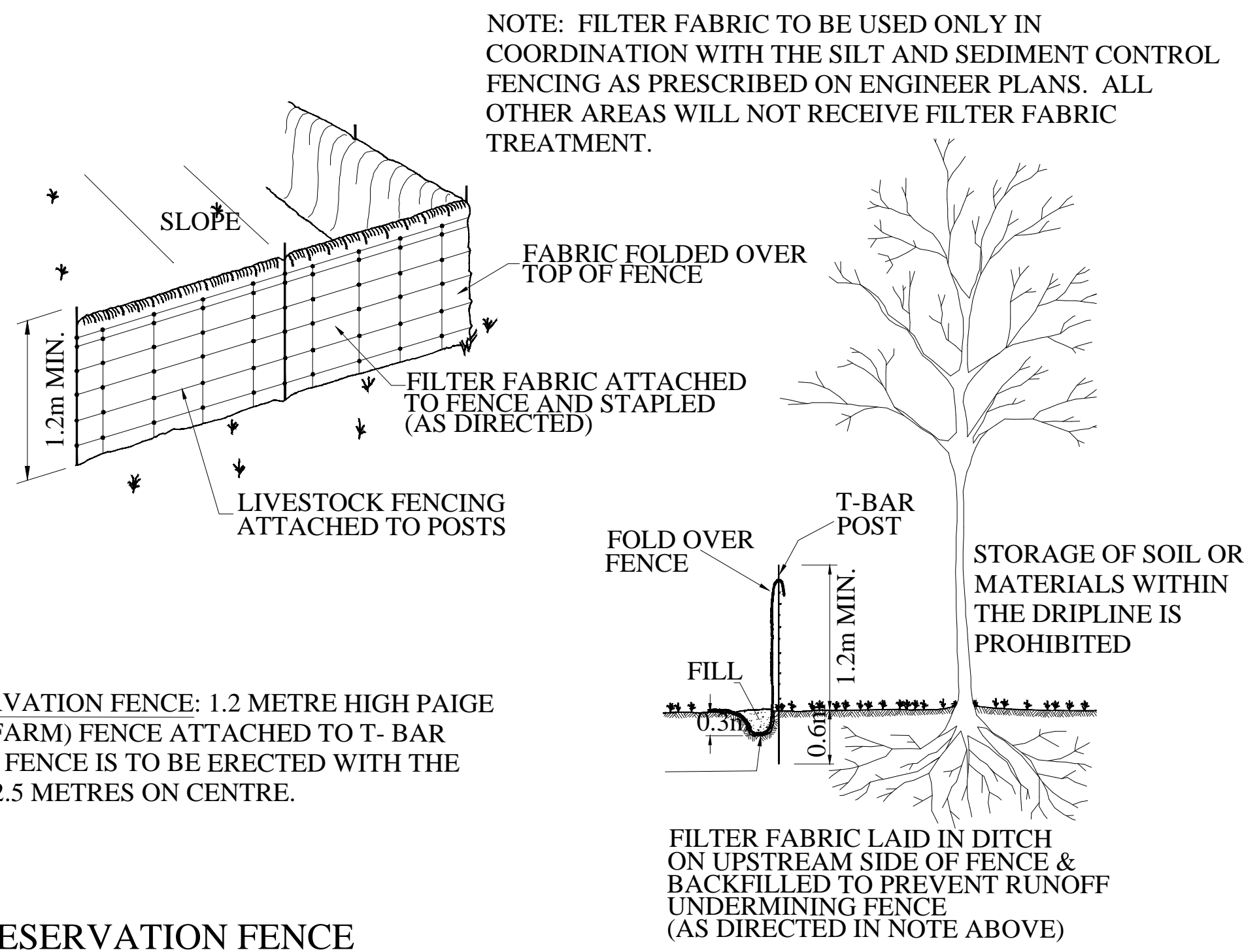
Fax: 705-722-5660  
Tel: 705-722-6278

SIMCOE COUNTY SERVICE CAMPUS - ORILLIA  
2 BORLAND STREET EAST, ORILLIA, ON

TREE INVENTORY/PRESERVATION PLAN

SCALE:	DATE:	DESIGNED BY:	REVIEWED BY:
1:500	October 7, 2020	SJT	NB
CITY FILE No.	OUR FILE REF. #	DRAWN BY:	TP-1
	24-20	SJT	





D1 - PRESERVATION FENCE

1. PROTECTION AREA IS INITIALLY IDENTIFIED IN THE FIELD BY A LICENSED ONTARIO SURVEYOR. THIS LINE APPROXIMATELY ESTABLISHES THE LIMITS OF TREE PRESERVATION SUBJECT TO AN ON-SITE MEETING WITH TOWNSHIP OF TAY PARKS PLANNING & DEVELOPMENT STAFF AND THE LANDSCAPE ARCHITECT/ARBORIST.
2. THE LANDSCAPE ARCHITECT/ARBORIST AND THE TOWNSHIP OF TAY PARKS PLANNING & DEVELOPMENT STAFF MEET TO REVIEW THE SURVEYED LINE PRIOR TO ANY TREE REMOVAL OCCURRING, AND TO ADJUST THE LINE WHERE APPROPRIATE TO REFLECT THE ACTUAL NATURE OF A TREED AREA AS OPPOSED TO A STRAIGHT CUT LINE.
3. TREES THAT ARE SUSCEPTIBLE TO FALLING ONTO PRIVATE PROPERTY OR MUNICIPAL PROPERTY FROM WITHIN THE TREE PRESERVATION ZONE WILL BE IDENTIFIED FOR REMOVAL. REMOVAL WILL TAKE PLACE AS PRESCRIBED IN ITEM #6 BELOW.
4. ONCE THE SITE VISIT HAS CONCLUDED, THEN TREE PRESERVATION FENCING WILL BE ERECTED ALONG THE AGREED TREE PRESERVATION LINE.
5. FULL TREE REMOVAL OUTSIDE OF THE TREED AREAS MAY OCCUR ONCE THE PRESERVATION FENCING HAS BEEN ERECTED, TREE REMOVAL PERMIT ISSUED, AND SIGNAGE POSTED A MINIMUM OF 7 DAYS PRIOR TO COMMENCING TREE REMOVAL ACTIVITIES ON SITE (AS PER BY-LAW 2014-115).
6. TREES ARE TO BE FELLED IN SUCH A MANNER AS TO NOT DISTURB VEGETATION TO REMAIN. NO MACHINERY OR EQUIPMENT SHALL BE OPERATED OR STORED WITHIN THE DRIPLINE OF PROTECTED TREES.
7. STUMP REMOVALS ARE TO BE IMPLEMENTED AS TO NOT TO DISTURB THE GROUND WITHIN THE TREE PRESERVATION ZONE.
8. ONCE TREE REMOVAL HAS OCCURRED, AND PRIOR TO THE ISSUANCE OF THE UNDERGROUND CERTIFICATE, A RE-INSPECTION OF THE TREE PRESERVATION AREAS MUST OCCUR WITH TOWNSHIP OF TAY STAFF AND THE LANDSCAPE ARCHITECT/ARBORIST. ANY ADDITIONAL TREES TO BE REMOVED WILL BE NOTED BY THE TOWNSHIP OF TAY PARKS PLANNING & DEVELOPMENT STAFF AND LANDSCAPE ARCHITECT/ ARBORIST.
9. ALL TREES ON ADJACENT PRIVATE LAND SHALL RECEIVE DRIPLINE PROTECTION.

TREE PRESERVATION PROCESS

THE INTENT OF TREE PRESERVATION AND PROTECTION IS TO PROVIDE AN INVENTORY OF EXISTING TREES ON SITE. IT IS NOT A SURVEY AND THEREFORE THE EXACT LOCATION OF EXISTING TREES MUST BE VERIFIED ON SITE PRIOR TO THE COMMENCEMENT OF ANY CONSTRUCTION WORKS.

ALL TREES TO BE PRESERVED SHALL BE INDICATED AND MARKED AS SUCH ON SITE BY THE LANDSCAPE ARCHITECT PRIOR TO THE COMMENCING OF THE CLEARING AND GRUBBING CONTRACT.

AS PART OF THE CLEARING AND GRUBBING CONTRACTUAL WORK, TREES LOCATED AT THE EDGES OF ALL PRESERVATION AREAS REGARDLESS OF SIZE, ARE TO BE PRUNED OF DEAD AND DISEASED LIMBS AND INDIVIDUAL SPECIMENS AND ARE TO BE REMOVED IN ACCORDANCE WITH ACCEPTED HORTICULTURAL PRACTICES AND TO THE SATISFACTION OF THE TOWNSHIP OF TAY UNDER THE DIRECT SUPERVISION OF THE LANDSCAPE ARCHITECT.

IN THE EVENT THAT A TREE THAT HAS BEEN DESIGNATED FOR PRESERVATION IS DAMAGED OR REMOVED WITHOUT PRIOR WRITTEN PERMISSION FROM THE LANDSCAPE ARCHITECT AND TOWNSHIP OF TAY, THE LAND OWNER SHALL BE RESPONSIBLE FOR THE REMOVAL AND OR DAMAGE AS OUTLINED IN BYLAW 2005-120, SECTION 15.

SPECIFICATIONS FOR PRESERVATION & PROTECTION

PRIOR TO THE COMMENCEMENT OF ANY CONSTRUCTION WORKS, ALL TREES OR BLOCKS OF TREES THAT HAVE BEEN DESIGNATED FOR PRESERVATION, AS INDICATED ON THE ACCOMPANYING PLAN SHALL BE FULLY PROTECTED BY THE ERECTION OF HOARDING OUTSIDE OF OR AT THE DRIPLINE (SEE DETAIL D2).

EQUIPMENT OR VEHICLES SHALL NOT BE PARKED, REPAIRED OR REFUELED WITHIN TREE PROTECTION ZONE, CONSTRUCTION MATERIALS SHALL NOT BE STORED AND EARTH MATERIALS SHALL NOT BE STOCKPILED WITHIN THE DRIP LINE AREA OF ANY TREE NOT DESIGNATED FOR REMOVAL.

ANY TREES NOT DESIGNATED FOR REMOVAL SHALL NOT HAVE RIGGING CABLES ATTACHED OR WRAPPED AROUND THEM. NOR SHALL ANY CONTAMINANTS BE DUMPED WITHIN THE PROTECTIVE AREAS. FURTHER, NO CONTAMINANTS SHALL BE DUMPED OR FLUSHED WHERE THEY MAY COME INTO CONTACT WITH THE FEEDER ROOTS OF THE TREES TO BE PRESERVED.

THE CONTRACTOR OR LAND OWNER SHALL TAKE EVERY PRECAUTION TO PREVENT DAMAGE TO TREES OR SHRUBS THAT ARE NOT DESIGNATED FOR REMOVAL AS PER THE ACCOMPANYING PLAN.

UNLESS THE CONTRACT WORK SPECIFICALLY REQUIRES WORK WITHIN THE DRIPLINE OF TREES NOT DESIGNATED FOR REMOVAL, EQUIPMENT SHALL NOT BE OPERATED WITHIN THAT DRIPLINE AREA. WHEN CONTRACT WORK MUST BE COMPLETED WITHIN THE DRIPLINE OF TREES NOT DESIGNATED FOR REMOVAL, OPERATION OF EQUIPMENT WITHIN THAT DRIPLINE SHALL BE KEPT TO THE MINIMUM AMOUNT REQUIRED TO COMPLETE THE WORKS. PRIOR TO THE COMMENCEMENT OF SUCH WORKS THE LANDSCAPE ARCHITECT AND TOWNSHIP OF TAY MUST BE GIVEN WRITTEN NOTIFICATION AND WILL SUBSEQUENTLY BE REQUIRED TO INSPECT SAID WORKS.

THE CONTRACTOR'S OPERATION SHALL IN NO WAY CAUSE DAMAGE TO THE TRUNK OR BRANCHES OF TREES NOT DESIGNATED FOR REMOVAL.

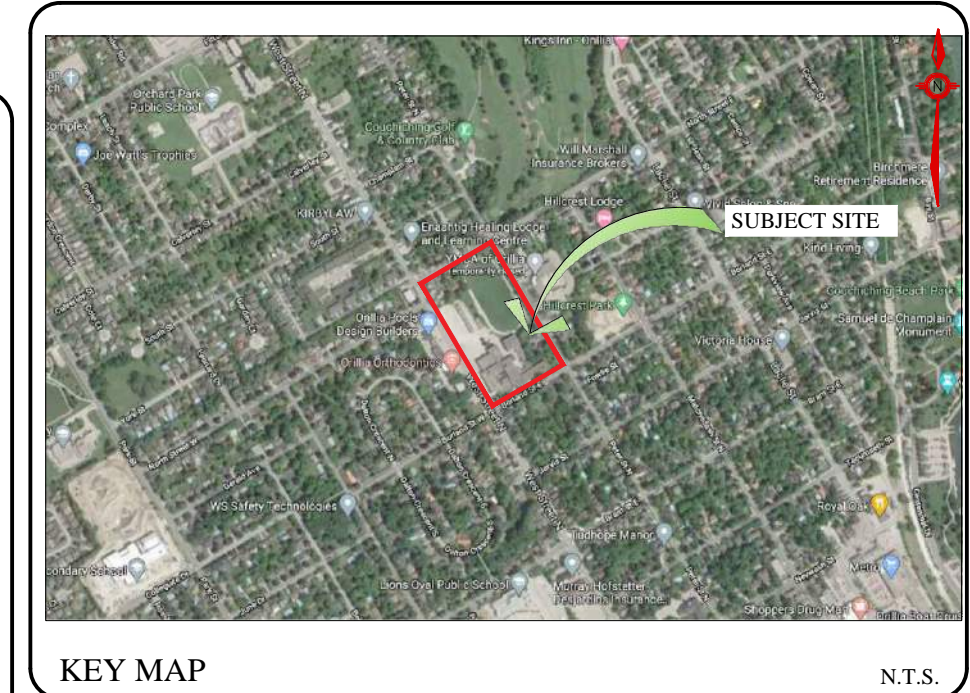
THE CONTRACTOR'S OPERATION SHALL NOT CAUSE FLOODING OR SEDIMENT DEPOSITS IN AREAS WHERE TREES ARE NOT DESIGNATED FOR REMOVAL.

IN THE EVENT THAT IT IS NECESSARY TO REMOVE LIMBS OR PORTIONS OF TREES NOT DESIGNATED FOR REMOVAL, WRITTEN APPROVAL AND DIRECTION MUST BE GIVEN BY THE LANDSCAPE ARCHITECT AND TOWNSHIP OF TAY PRIOR TO ANY WORKS. THE REMOVALS MUST BE EXECUTED CAREFULLY AND IN ACCORDANCE WITH STANDARD HORTICULTURAL PRACTICES AND TECHNIQUES.

IN THE EVENT THAT GRADES AROUND A TREE DESIGNATED FOR PRESERVATION ARE TO BE CHANGED, THE DEVELOPER, AGENT OR LAND OWNER SHALL BE REQUIRED TO TAKE PRECAUTIONS TO PRESERVE THE TREE, SUCH AS DRY WELLING AND ROOT FEEDING. THE PROTECTION MEASURES MUST BE DONE TO THE SATISFACTION OF THE LANDSCAPE ARCHITECT AND TOWNSHIP OF TAY.

THE DEVELOPER SHALL BE RESPONSIBLE FOR THE MAINTENANCE AND/OR REMOVAL OF DEAD, DYING, DISEASED TREES WITHIN THE LIMIT OF THIS PLAN UNTIL END OF GENERAL MAINTENANCE.

NOTES FOR TREE PRESERVATION AND PROTECTION



GENERAL NOTES

CONTRACTOR IS RESPONSIBLE FOR ALL LOCATES INCLUDING ALL UNDERGROUND SERVICES PRIOR TO ANY EXCAVATION OR INSTALLATIONS. THE CONTRACTOR IS REQUIRED TO NOTIFY THE VARIOUS UTILITY COMPANIES 48 HOURS PRIOR TO THE COMMENCEMENT OF ANY WORK.

ANY ACCOMPANYING DOCUMENTATION RELATING TO THE LANDSCAPE PLAN AND/OR PRESERVATION PLAN SUCH AS TENDER DOCUMENTS AND CHANGE NOTICES ARE TO BE ENDORSED BY J.D.B. ASSOCIATES LIMITED PRIOR TO THE BEGINNING OF ANY SITE WORKS. IN THE EVENT THAT A DISCREPANCY THE DRAWING SHALL BE ASSUMED CORRECT.

IT IS THE RESPONSIBILITY OF THE PERSON OR PERSONS RESPONSIBLE FOR THE CONSTRUCTED WORKS TO NOTIFY THE LANDSCAPE ARCHITECT WHEN PREPARED FOR ANY REQUIRED INSPECTIONS AND SIGN OFFS.

SCHEDULED MEETINGS SHALL TAKE PLACE AT THE CLOSEST MUTUALLY CONVENIENT TIME.

No.	REVISION	DATE	APRVD.
1.	SUBMITTED FOR SPA	November 13, 2020	SJT

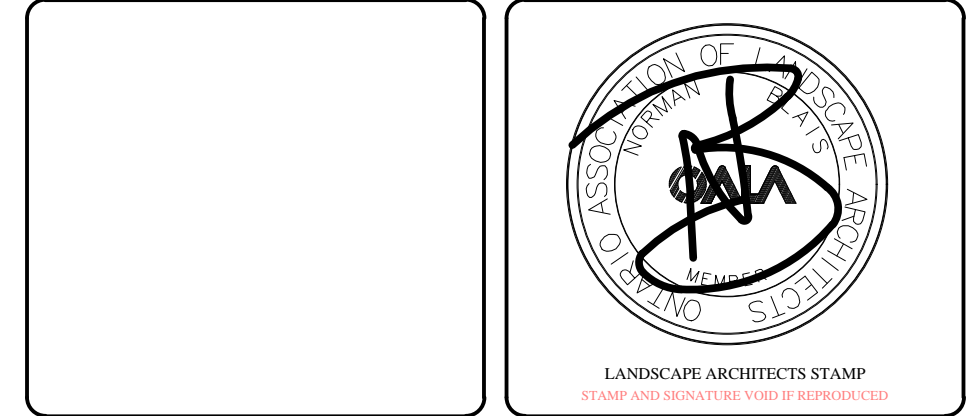
ALL DRAWINGS AND SPECIFICATIONS ARE INSTRUMENTS OF SERVICE AND ARE THE PROPERTY OF J. D. B. ASSOCIATES LIMITED. DRAWINGS ARE NOT TO BE MODIFIED AND/OR REPRODUCED WITHOUT THE WRITTEN CONSENT OF J.D.B. ASSOCIATES LIMITED. REPRODUCTION OF DRAWINGS IN ANY FORM WITHOUT THE CONSENT OF J.D.B. ASSOCIATES LIMITED VOIDS THE DRAWING AT WHICH TIME J.D.B. ASSOCIATES LIMITED ACCEPTS NO LIABILITY FOR THE DRAWING CONTENT OR WORKS RESULTING FROM SAID REPRODUCTION. DRAWINGS MAY BE REPRODUCED BY MUNICIPAL AND GOVERNMENT AGENCIES RESPONSIBLE FOR APPROVALS FOR THEIR OWN USE. J. D. B. ASSOCIATES RESERVES THE RIGHT TO WITHDRAW ANY DRAWING(S) FROM GOVERNMENT OR MUNICIPAL AGENCIES WHETHER APPROVED OR NOT IN THE EVENT THAT ACCOUNTS ARE NOT SETTLED OR REMAIN OUTSTANDING.

IT IS THE RESPONSIBILITY OF THE CONTRACTOR TO VERIFY ALL DIMENSIONS ON THE SITE AND REPORT ANY DISCREPANCIES OR VARIATIONS FROM THE SUPPLIED INFORMATION TO THE LANDSCAPE ARCHITECT WITH THE PROJECT. J. D. B. ASSOCIATES LIMITED IS NOT RESPONSIBLE FOR THE ACCURACY OF SURVEY, ARCHITECTURAL, MECHANICAL, ENGINEERING OR ELECTRICAL INFORMATION SHOWN ON THE DRAWING. FOR FURTHER INFORMATION REFER TO APPROPRIATE SURVEY, ARCHITECTURAL, MECHANICAL, ENGINEERING OR ELECTRICAL DRAWINGS PRIOR TO PROCEEDING WITH ANY WORKS.

THIS DRAWING IS NOT TO BE SCALED.

BASE INFORMATION PROVIDED BY:  
MCLARCHITECTS  
48 ALLIANCE BLVD., UNIT 110 BARRIE, ONTARIO  
L4M 5K3 WWW.MCLARCHITECTS.CA

BASE PLAN REVISED: September 2020



JDB ASSOCIATES LTD.

Urban Designers  
Landscape Architects  
Arborists

274 Burton Ave., Suite 1201  
Barrie, Ontario  
L4N 5W4

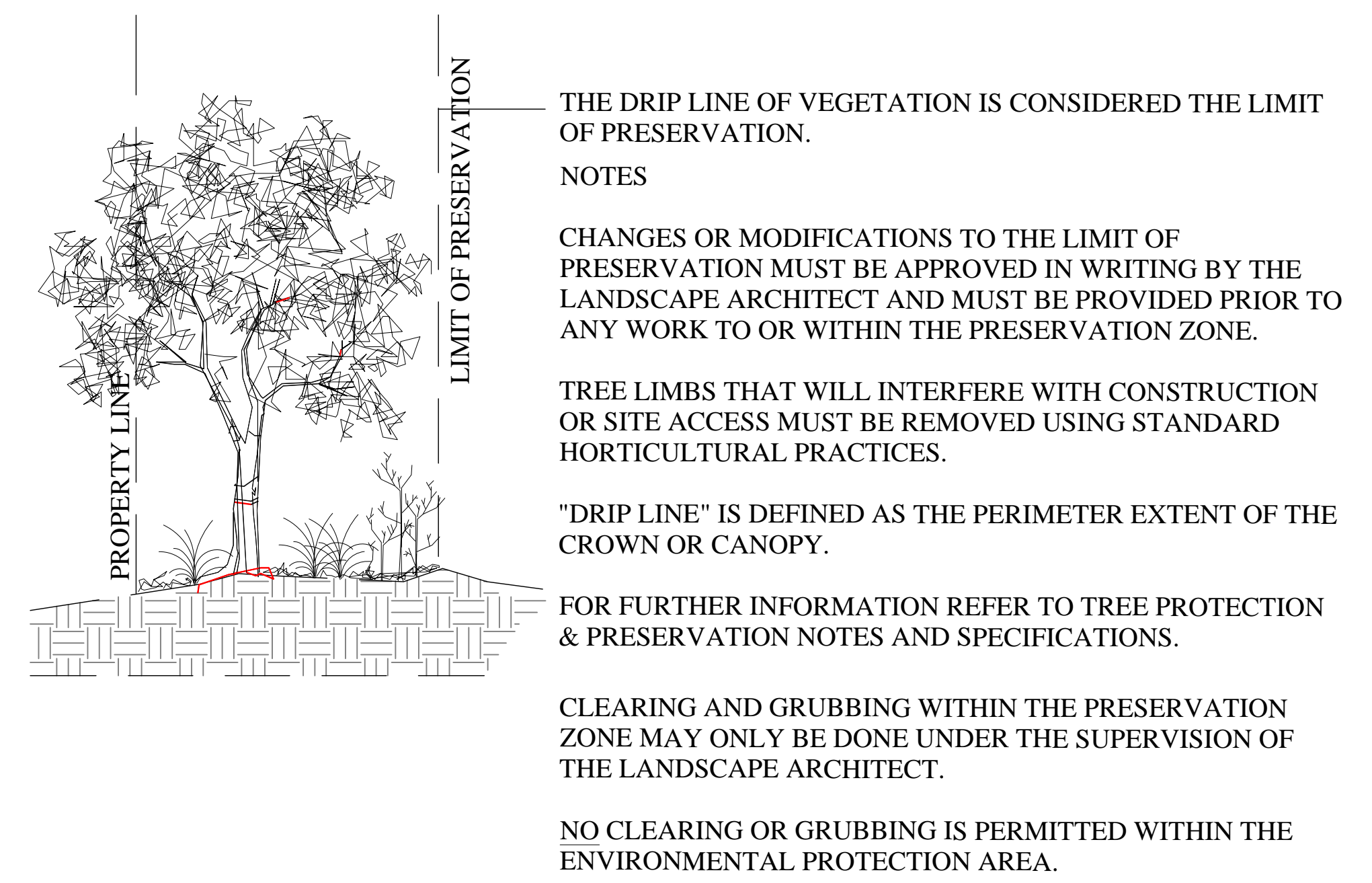
Fax: 705-722-5660  
Tel: 705-722-6278

SIMCOE COUNTY SERVICE CAMPUS - ORILLIA

2 BORLAND STREET EAST, ORILLIA, ON

TREE INVENTORY/PRESERVATION PLAN

SCALE:	DATE:	DESIGNED BY:	REVIEWED BY:
1:500	October 7, 2020	SJT	NB
CITY FILE No.	OUR FILE REF. #	DRAWN BY:	
	24-20	SJT	TP-2



D2 - LIMIT OF TREE PRESERVATION DETAIL