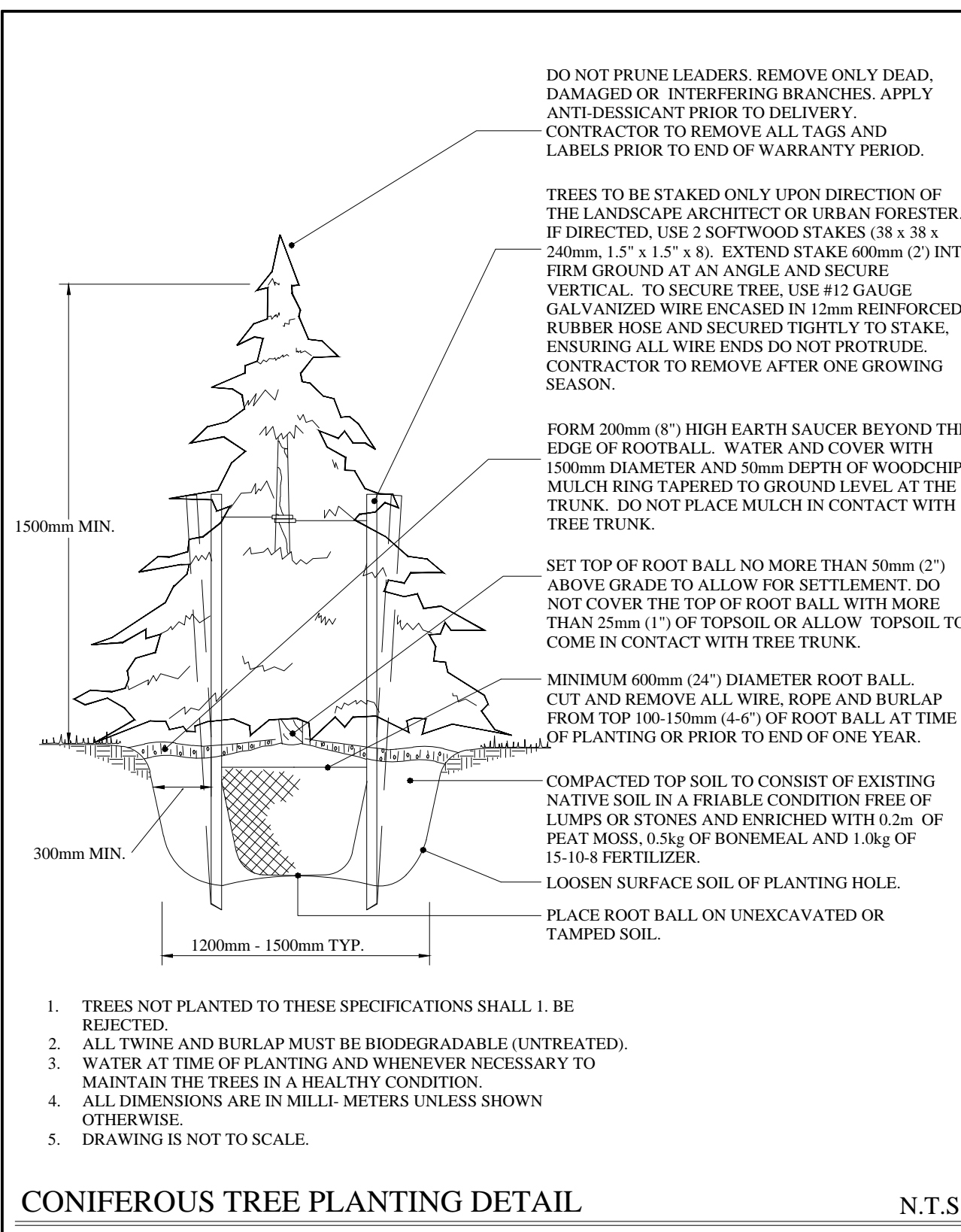
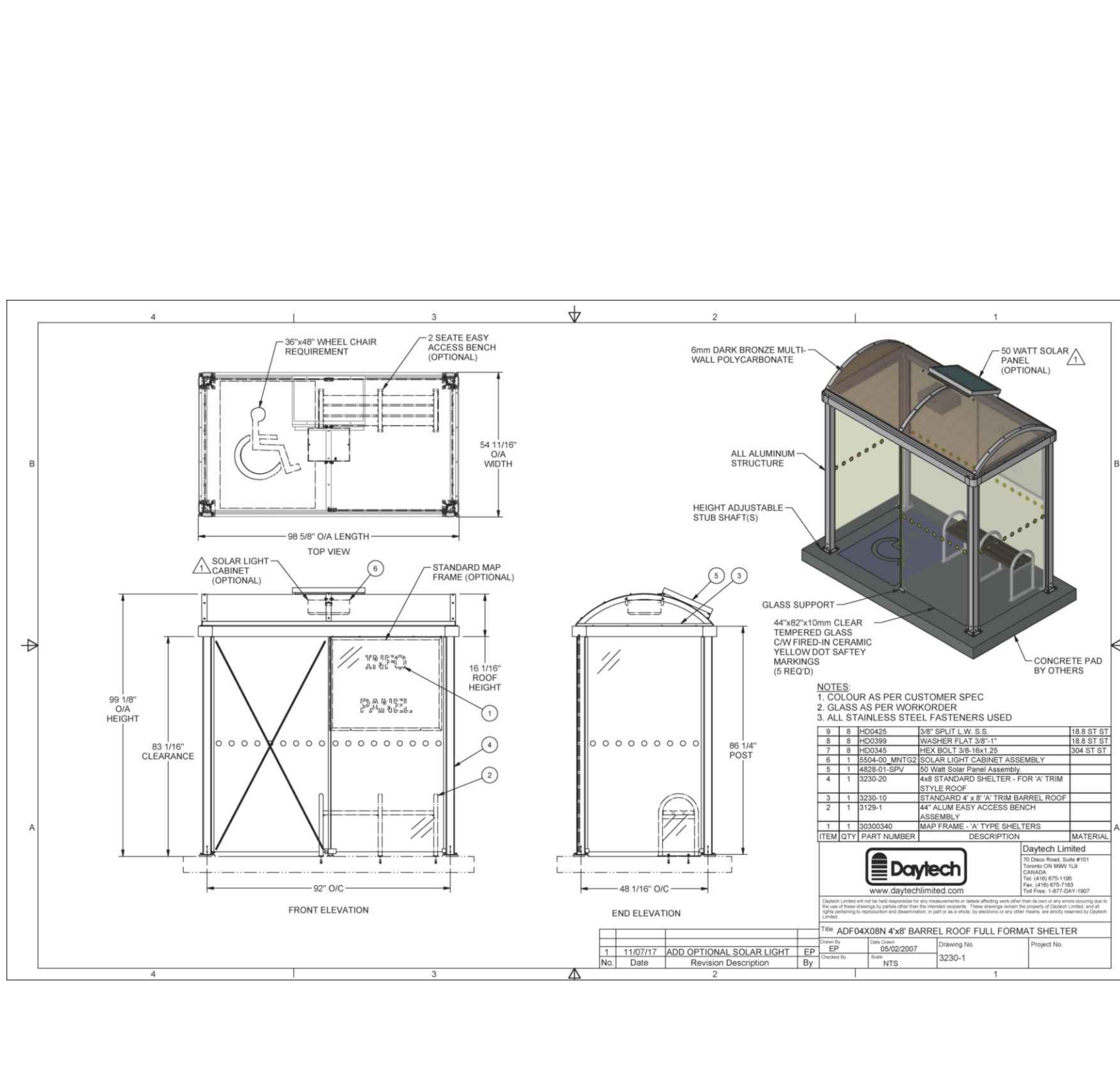
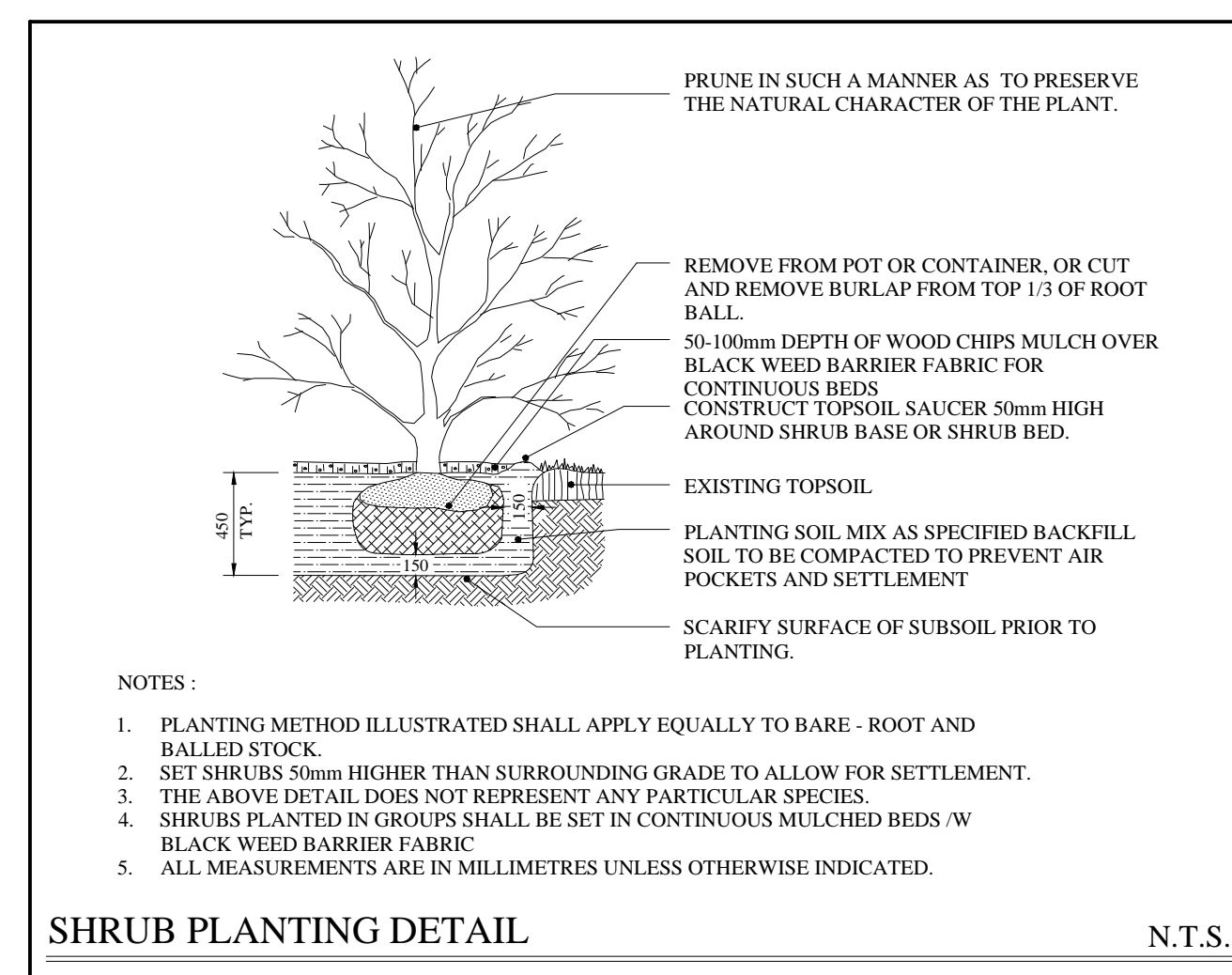
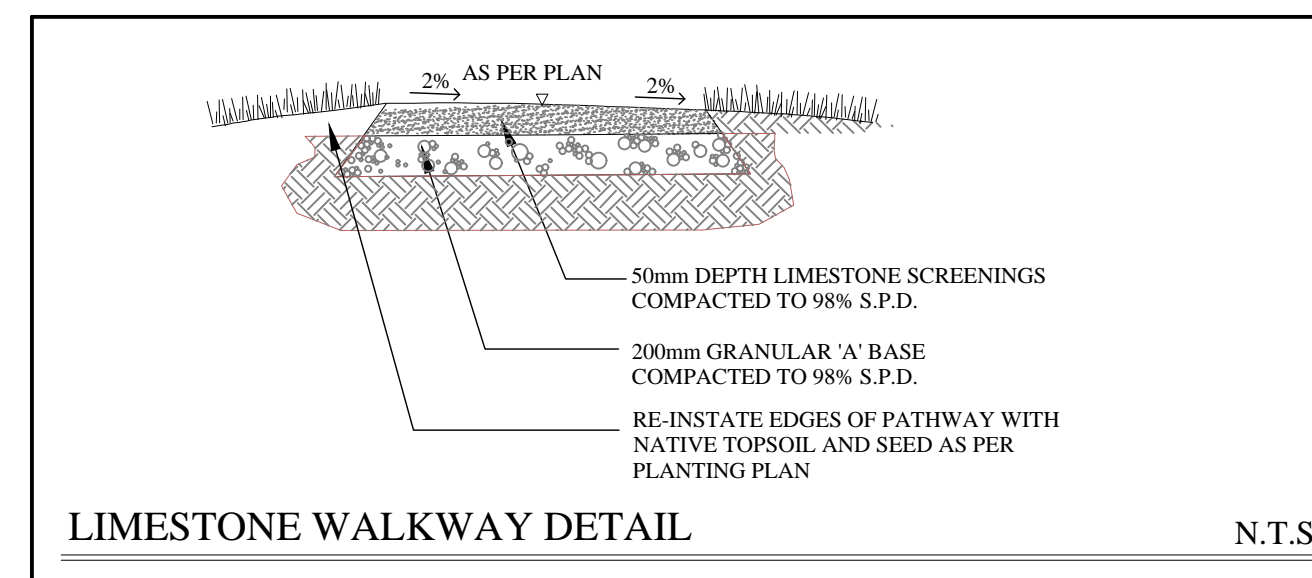


**DECIDUOUS TREE PLANTING DETAIL** N.T.S.



**CONIFEROUS TREE PLANTING DETAIL** N.T.S.



**GENERAL NOTES**

CONTRACTOR IS RESPONSIBLE FOR ALL LOCATES INCLUDING ALL UNDERGROUND SERVICES PRIOR TO ANY EXCAVATION OR INSTALLATIONS. THE CONTRACTOR IS REQUIRED TO NOTIFY THE VARIOUS UTILITY COMPANIES 48 HOURS PRIOR TO THE COMMENCEMENT OF ANY WORK.

ANY ACCOMPANYING DOCUMENTATION RELATING TO THE LANDSCAPE PLAN AND/OR PRESERVATION PLAN SUCH AS TENDER DOCUMENTS AND CHANGE NOTICES ARE TO BE ENDORSED BY J.D.B. ASSOCIATES LIMITED PRIOR TO THE BEGINNING OF ANY SITE WORKS. IN THE EVENT THAT A DISCREPANCY THE DRAWING SHALL BE ASSUMED CORRECT.

IT IS THE RESPONSIBILITY OF THE PERSON OR PERSONS RESPONSIBLE FOR THE CONSTRUCTED WORKS TO NOTIFY THE LANDSCAPE ARCHITECT WHEN PREPARED FOR ANY REQUIRED INSPECTIONS AND SIGN OFFS.

SCHEDULED MEETINGS SHALL TAKE PLACE AT THE CLOSEST MUTUALLY CONVENIENT TIME.

No.	REVISION	DATE	APRVD.
1.	SUBMITTED FOR SPA	November 13, 2020	SJT
2.	AS PER CITY COMMENTS	January 29, 2021	SJT
3.	SUBMITTED FOR SPA	April 28, 2021	SJT

**SITE CONDITIONS**

1. VERIFY ALL EXISTING SITE CONDITIONS AND REPORT ANY DISCREPANCIES BEFORE COMMENCING WORK.
2. THE CONTRACTOR SHALL VERIFY THE LOCATION OF ALL UTILITIES AND IS RESPONSIBLE FOR ANY DAMAGE TO SERVICES, EXISTING VEGETATION OR ANY OTHER FEATURES TO BE RETAINED.
3. FOR ALL AREAS OF DISTURBANCE: NATIVE TOPSOIL IS TO BE STRIPPED, STOCK PILED AND REPLACED TO A MINIMUM DEPTH OF 300mm.

**PLANT MATERIAL REQUIREMENTS**

4. PLANT MATERIAL LISTED IN THE PLANT SCHEDULE ARE MINIMUM SIZES +/- NURSERY GROWN AND UNIFORM SPECIMENS. NO SUBSTITUTIONS WILL BE PERMITTED WITHOUT WRITTEN APPROVAL FROM THE LANDSCAPE ARCHITECTS.
5. DECIDUOUS TREES SHALL HAVE A STRAIGHT CENTRAL LEADER AND WELL BRANCHED 1.5M ABOVE GRADE UNLESS OTHERWISE STATED.
6. CONIFEROUS TREES SHALL HAVE A STRAIGHT CENTRAL LEADER AND DENSELY BRANCHED TO WITHIN 0.3m OF THE GROUND.
7. ALL PLANTING MATERIAL AND OPERATIONS TO MEET OR EXCEED THE HORTICULTURAL STANDARDS OF THE CANADIAN NURSERY LANDSCAPE ASSOCIATION AND THE HORTICULTURAL TRADES ASSOCIATION. ALL PLANT MATERIAL TO BE NO.1 GRADE NURSERY STOCK. UNSATISFACTORY STOCK WILL BE REFUSED ON THE SITE.
8. SOD TO BE CANADA NO.1 NURSERY SOD, MEETING ONTARIO SOD GROWERS ASSOCIATION STANDARDS. ALL SOD AREAS TO RECEIVE 200MM DEPTH OF TOPSOIL UNLESS OTHERWISE INDICATED.

**PLANTING NOTES**

9. LOCATIONS FOR PLANT MATERIAL AND PLANTING BEDS ARE TO BE MARKED OR STAKED OUT BY THE CONTRACTOR AND APPROVED BY THE LANDSCAPE ARCHITECT AND MUNICIPAL STAFF PRIOR TO INSTALLATION.
10. ALL PLANT MATERIAL WHICH ARE SPECIFIED BY O.C. (ON CENTER SPACING) ARE TO BE PLANTED AS NOTED IN THE PLANT SCHEDULE.
11. IN THE EVENT OF A DISCREPANCY BETWEEN THE PLANT LIST AND DRAWING, THE DRAWING WILL BE ASSUMED TO BE CORRECT.
12. ALL MASS PLANTINGS OF SHRUBS SHALL BE IN CONTINUOUS BEDS AND MULCHED AS SPECIFIED.
13. ALL TREE PITS SHALL INCLUDE TREATMENT WITH MICORRHIZAL FUNGI OF THE WALLS BEFORE PLANTING (2L OF "MIKE" OR SIMILAR PRODUCT SHALL BE USED FOR EACH 60MM CALIPER TREE)
14. ALL TREES ARE TO BE STAKED OR GUY WIRED ACCORDING TO DETAILS PROVIDED. NO ACCESSIBLE OPEN HOLE TREE PITS SHALL BE PERMITTED OVERNIGHT.
15. REMOVE BURLAP AND ROPE FROM THE TOP 1/3 OF ROOT BALLS.
16. WATER AT TIME OF PLANTING AND WHENEVER DEEMED NECESSARY TO MAINTAIN THE TREES IN A HEALTHY CONDITION.
17. ALL PLANT MATERIALS WHICH CAN NOT BE PLANTED IMMEDIATELY UPON ARRIVAL ON SITE SHALL BE PROPERLY HEeled IN OR WELL PROTECTED WITH SOIL OR SIMILAR MATERIALS TO PREVENT DRYING OUT AND SHALL BE KEPT MOIST UNTIL COMMENCEMENT OF PLANTING.
18. NO ACCESSIBLE OPEN HOLE TREE PITS SHALL BE PERMITTED OVERNIGHT. ALL OPEN PITS SHALL BE ADEQUATELY PROTECTED BY BARRIERS OR FILLED IN WITH SOIL PRIOR TO THE END OF EACH PLANTING DAY.
19. ALL NEW WORK TO BLEND NEATLY AND SMOOTHLY WITH EXISTING CONDITIONS.

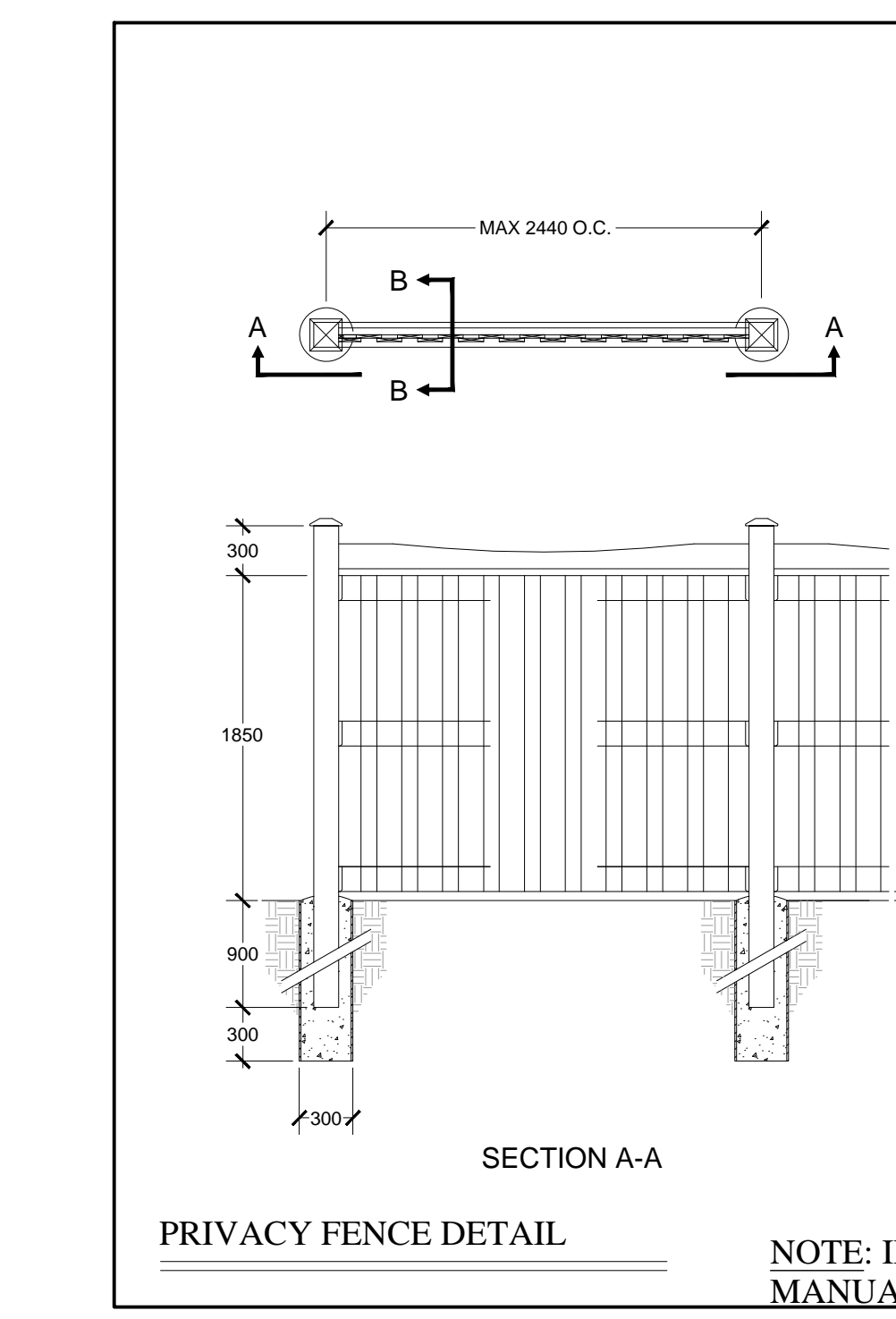
**INSPECTION AND WARRANTY**

20. GIVE TIMELY NOTICE TO THE LANDSCAPE ARCHITECT FOR THE REQUIRED START UP SITE INSPECTION TO REVIEW SITE CONDITIONS AND SCHEDULE FOLLOW UP INSTALLATIONS.
21. INSTALLATION OF PLANT MATERIAL PRIOR TO INSPECTION BY THE LANDSCAPE ARCHITECT WILL BE THE CONTRACTOR'S RESPONSIBILITY.
22. THE LANDSCAPE ARCHITECT RESERVES THE RIGHT TO REJECT ANY PLANTS, WHETHER INSTALLED OR NOT, WHICH DO NOT CONFORM TO THE SPECIFICATIONS AND/OR SITE DRAWING. REMOVE ALL REJECTED PLANTS FROM THE SITE IMMEDIATELY. DO NOT REMOVE ANY LABELS FROM PLANTS UNTIL PLANTS HAVE BEEN INSPECTED AND APPROVED BY THE LANDSCAPE ARCHITECT.
23. ALL PLANT MATERIAL AND WORKMANSHIP WILL BE INSPECTED AND IS UNDER WARRANTY FOR A MINIMUM OF TWO YEAR FROM DATE OF WRITTEN ACCEPTANCE. ALL PLANT MATERIAL MUST BE IN A HEALTHY, VIGOROUS GROWING CONDITION SATISFACTORY TO THE CONTRACT ADMINISTRATOR AT THE END OF THE WARRANTY PERIOD OR BE REPLACED AT THE CONTRACTOR'S EXPENSE.
24. FINAL ACCEPTANCE OF THE PROJECT WILL BE CARRIED OUT UPON COMPLETION OF ALL WORK INCLUDED IN THE CONTRACT.

**TOPSOIL REQUIREMENTS**

25. PROVIDE MINIMUM SOIL VOLUME PER TREE AT 0.45m DEPTH FOR STREET TREES (OR ABOVE UTILITIES) AND MAX. 0.9m IN OTHER AREAS:
  - 18 m<sup>3</sup> FOR LARGE TREES
  - 12 m<sup>3</sup> FOR SMALL TREES
26. PREPARED SOIL MIXTURE FOR EACH TREE PITS AND SHRUBS SHALL CONSIST OF HIGH QUALITY SOIL:
  - SIX PARTS OF SANDY LOAM SOIL (50-60% SAND, 20-40% SILT, 6-10% CLAY, 2-5% ORGANIC), WITH A pH OF 7.5+ OR LESS. FREE OF CLAY LUMPS, DEBRIS, TOXIC SUBSTANCES, STONES, WOODY MATERIAL, WEED SEEDS AND GRASS ROOTS
  - ONE PART COARSE PULVERIZED CANADIAN PEAT MOSS
  - ONE PART OF WELL-ROTTED FARM MANURE
27. \*) ACIDIC SOIL IF REQUIRED (REFER TO PLANT LIST) SHALL CONSIST OF:
  - ONE PART OF SANDY LOAM SOIL WITH A pH OF MAX 5.5 (IF REQUIRED REDUCE THE pH WITH +2kg/10m<sup>3</sup> AGRICULTURE SULPHUR OR +3kg/10m<sup>3</sup> IRON SULPHATE)
  - ONE PART COARSE SAND
  - ONE PART COARSE PULVERIZED SPHAGNUM PEAT MOSS
  - ONE PART PINE BARK OR PARTLY DECOMPOSED OAK LEAVES
28. PREPARED SOIL MIXTURE FOR SOD AREAS SHALL CONSIST OF MIN. 20cm HIGH QUALITY SOIL:
  - SIX PARTS OF SANDY LOAM SOIL (50-60% SAND, 20-40% SILT, 6-10% CLAY, 2-5% ORGANIC), WITH A PH OF 7.5+ OR LESS. FREE OF CLAY LUMPS, DEBRIS, TOXIC SUBSTANCES, STONES, WOODY MATERIAL, WEED SEEDS AND GRASS ROOTS

**NOTES**



1. FENCE LOCATIONS AND DIMENSIONS MUST BE IN ACCORDANCE WITH APPROVED LANDSCAPE PLANS.

2. WHERE FENCING ABUTS MUNICIPALLY OWNED LANDS (i.e. ROAD RIGHT OF WAY) ALL FENCING INCLUDING FOOTINGS MUST BE INSTALLED SOLELY ON PRIVATE PROPERTY.

3. ALL WOOD TO BE SELECT TIGHT KNOT GRADE CEDAR AS PER THE NATIONAL LUMBER GRADES AUTHORITY

4. ALL DIMENSIONS ARE IN MILLIMETRES UNLESS NOTED

5. ALL HARDWARE TO BE HOT DIP GALVANIZED

6. ALL LUMBER TO BE PRE-TREATED WITH AN APPROVED BROWN, MICRONIZED COPPER WOOD PRESERVATIVE OR APPROVED EQUIVALENT IN PLACE OF STAIN APPLICATION

7. WHERE COLUMNS ARE REQUIRED, REFER TO DETAIL BSD-1203

NOTE: IN THE TREE PRESERVATION AREAS, THE FENCE POST HOLES TO BE MANUALLY DUG UNDER THE SUPERVISION OF THE JDB ASSOCIATES ARBORIST.

**SIMCOE COUNTY SEED MIXTURE 689**

NO-MOW ZONE

- 2% NEW ENGLAND ASTER (*Aster novae-angliae*)
- 12% BLACK EYED SUSAN (*Rudbeckia hirta*)
- 20% SAND DROPSSEED (*Sporobolus crytandrus*)
- 20% CANADA WILD RYE (*Elymus canadensis*)
- 4% CANADA GOLDEN ROD (*Solidago canadensis*)
- 5% COMMON MILKWEED (*Asclepias syriaca*)
- 1% WILD BERGAMONTE (*Monaarda fistulosa*)
- 1% SMOOTH BLUE ASTER (*Aster laevis*)
- 15% LITTLE BLUE STEM (*Andropogon scoparius*)
- 20% INDIANGRASS (*Sorghastrum nutans*)

SEEDING RATE - 30kg PER HECTARE SUPPLIED BY - OSC SEEDS 1-519-886-0557

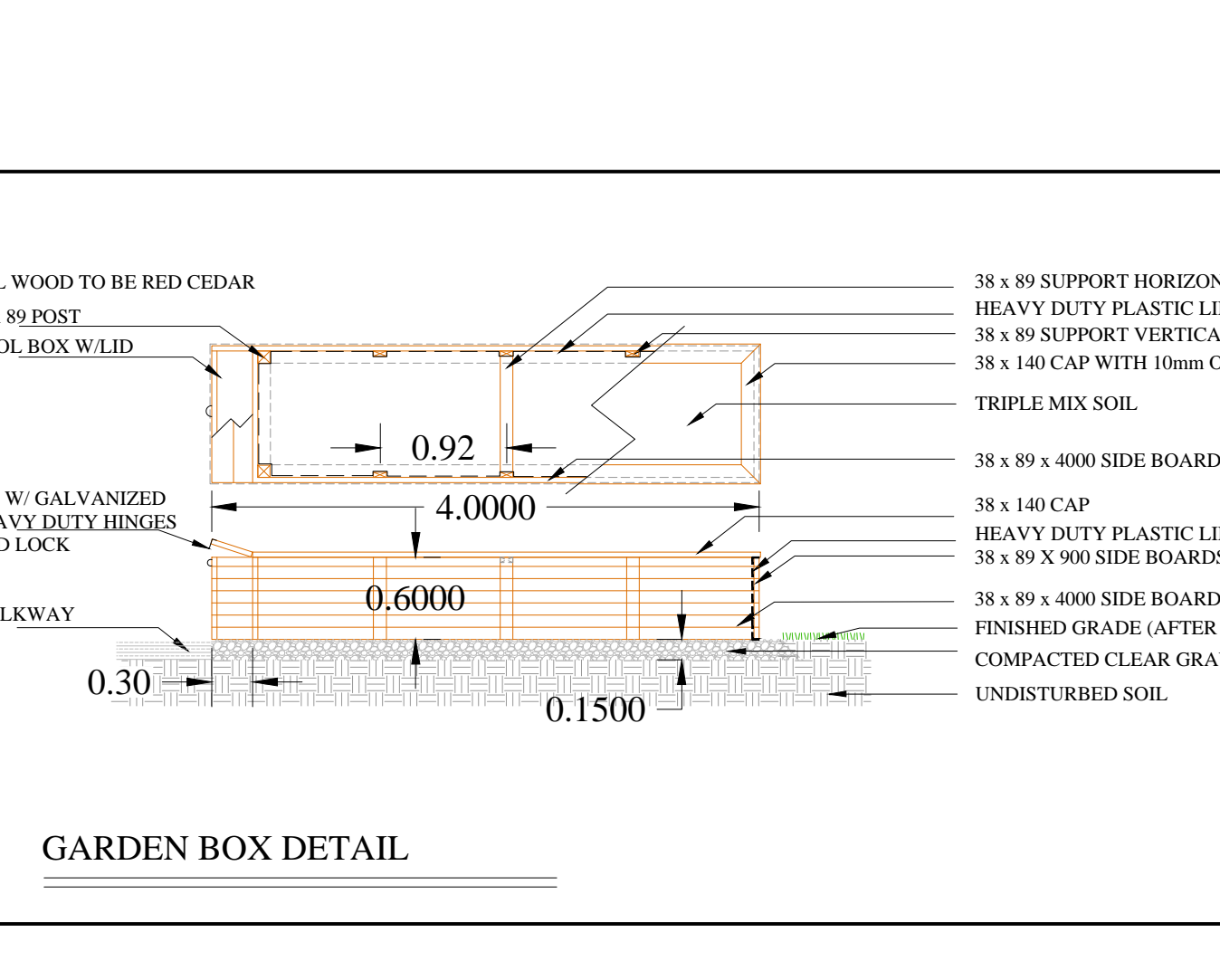
ANNUAL RYE NURSE CROP TO BE APPLIED AT TIME OF NATIVE UPLAND PLANTING MIXTURE AT A RATE OF 12kg PER HECTARE. REFER TO TERRASEEDING NOTES AND MULCH APPLICATION SPECIFICATIONS IN THIS BOX FOR FURTHER DETAILS.

**TERRASEEDING APPLICATION SPECIFICATIONS**

ECORLANKET OR TERRASEEDING TACTIFER / FLEXIGUARD HYDROMULCH SHALL BE APPLIED AS PER MANUFACTURER SPECIFICATIONS.

**TOP SOIL:**

TOPSOIL SHALL BE PROVIDED TO A MINIMUM DEPTH OF 0.45m FOR TERRESTRIAL AREAS TO BE TERRASEED. REFER TO PLANTING NOTES ON LP-4 FOR ALL THE OTHER AREAS TO BE PLANTED WITH SOD, SHRUBS AND TREES AND FOR THE TOPSOIL QUALITY.



**NUVO IRON**  
13771 COLERAINE DR  
CALLEDON, ON L7E 3B6  
PHONE: (905) 857-1010  
FAX: (905) 857-9356  
www.nuvoiron.com

**SELECT DESIRED POST CAP**

OPTIONS:

- SPEAR
- PYRAMID

**SELECT DESIRED GATE OPTIONS:**

- GATE OPENING
- LOCK BOX

**SELECT DESIRED COLOUR:**

- HIGH GLOSS BLACK
- WHITE
- BROWN
- GREEN
- FLAT BLACK
- TEXTURED BLACK

\*CUSTOM COLORS AVAILABLE UPON REQUEST

97 1/4" (2470 MM) CENTER TO CENTER

90 3/4" (2305 MM)

3 3/4" (95 MM) BETWEEN PICKETS

10 1/8" (257 MM)

41 7/8" (1064 MM)

60" (1524 MM)

LEVEL GROUND

NUVO IRON FENCE SURFACE MOUNT ONTO THE REFER TO LP-1 FOR THE RAILINGS' FENCE HEIGHT

**FRONT VIEW**

**SPECIFICATIONS:**

**POST RAILS AND PICKETS:**

- EXTRUDED MARINE ALUMINUM.
- CHROMATE CONVERSION COATING.
- ELECTROSTATICALLY APPLIED.
- THERMALLY BONDED POLYESTER POWDER COATING.
- MINIMUM FILM THICKNESS 2.5 mm.
- E. COATING AVAILABLE.

**PICKETS:** 1 1/2" X 3/4" (38 mm X 19 mm) 14 GAUGE.

**FITTINGS:** 12 GAUGE STAMPED MARINE ALUMINUM.

**WELDS:** ALUMINUM

**STANDARD PANEL WIDTH:** 90 3/4" (2305 mm)

**STANDARD PANEL HEIGHTS:**

- REFER TO NUVO IRON CATALOG.
- OPTIONAL HEIGHTS AVAILABLE UPON REQUEST.

**STANDARD GATE OPENINGS INSIDE POSTS:**

- REFER TO NUVO IRON CATALOG.

**WARRANTY:** 5 YEARS.

- UPON REQUEST.
- EXTENDED WARRANTY AVAILABLE.

**RAILS:** 2 1/2" X 1 1/2" (63 mm X 38 mm) 11 GAUGE.

**NOTES:**

1. INSTALLATION TO BE COMPLETED IN ACCORDANCE WITH MANUFACTURER'S SPECIFICATIONS.
2. DO NOT SCALE DRAWING.
3. THIS DRAWING IS INTENDED FOR USE BY ARCHITECTS, ENGINEERS, CONTRACTORS, CONSULTANTS AND DESIGN PROFESSIONALS. FOR PLANNING PURPOSES ONLY. THIS DRAWING MAY NOT BE USED FOR CONSTRUCTION.
4. ALL INFORMATION CONTAINED HEREIN WAS CURRENT AT THE TIME OF DEVELOPMENT BUT MUST BE REVIEWED AND APPROVED BY THE PRODUCT MANUFACTURER TO BE CONSIDERED ACCURATE.
5. CONTRACTOR'S NOTE: FOR PRODUCT AND COMPANY INFORMATION VISIT www.CADdetails.com/info AND ENTER REFERENCE NUMBER.

**MEMORIAL COLLECTION - ALUMINUM**

MEMORIAL COLLECTION: NUVO™ XXV ALUMINUM

COMMERCIAL PLASTIC LANDSCAPE EDGE MIN. 5" DEPTH: Prof. Edging w/Slake & Concrete FROM "GRAVENHURST PLASTICS", "GREENSTAR PLANT PRODUCT (1888-747-4769) OR APPROVED EQUAL.

ALL DRAWINGS AND SPECIFICATIONS ARE INSTRUMENTS OF SERVICE AND ARE THE PROPERTY OF J. D. B. ASSOCIATES LIMITED. DRAWINGS ARE NOT TO BE MODIFIED AND/OR REPRODUCED WITHOUT THE WRITTEN CONSENT OF J.D.B. ASSOCIATES LIMITED. REPRODUCTION OF DRAWINGS IN ANY FORM WITHOUT THE CONSENT OF J.D.B. ASSOCIATES LIMITED VOIDS THE DRAWING AT WHICH TIME J.D.B. ASSOCIATES LIMITED ACCEPTS NO LIABILITY FOR THE DRAWING CONTENT OR WORKS RESULTING FROM SAID REPRODUCTION. DRAWINGS MAY BE REPRODUCED BY MUNICIPAL AND GOVERNMENT AGENCIES RESPONSIBLE FOR APPROVALS FOR THEIR OWN USE. J. D. B. ASSOCIATES RESERVES THE RIGHT TO WITHDRAW ANY DRAWINGS FROM GOVERNMENT OR MUNICIPAL AGENCIES WHETHER APPROVED OR NOT IN THE EVENT THAT ACCOUNTS ARE NOT SETTLED OR REMAIN OUTSTANDING.

IT IS THE RESPONSIBILITY OF THE CONTRACTOR TO VERIFY ALL DIMENSIONS ON THE SITE AND REPORT ANY DISCREPANCIES OR VARIATIONS FROM THE SUPPLIED INFORMATION TO THE LANDSCAPE ARCHITECT WITH THE PROJECT. J. D. B. ASSOCIATES LIMITED IS NOT RESPONSIBLE FOR THE ACCURACY OF SURVEY, ARCHITECTURAL, MECHANICAL, ENGINEERING OR ELECTRICAL INFORMATION SHOWN ON THE DRAWING. FOR FURTHER INFORMATION REFER TO APPROPRIATE SURVEY, ARCHITECTURAL, MECHANICAL, ENGINEERING OR ELECTRICAL DRAWINGS PRIOR TO PROCEEDING WITH ANY WORKS.

THIS DRAWING IS NOT TO BE SCALED.

BASE INFORMATION PROVIDED BY:  
MC ARCHITECTS  
48 ALLIANCE BLVD., UNIT 110 BARRE, ONTARIO  
L4M 5K3 WWW.MCARCHITECTS.CA

BASE PLAN REVISED: September 2020

LANDSCAPE ARCHITECTS STAMP  
JDB ASSOCIATES LIMITED

**JDB ASSOCIATES LTD.**

Urban Designers  
Landscape Architects  
Arborists

274 Burdon Ave., Suite 1201  
Barrie, Ontario  
L4N 5W4

Fax: 705-722-5660  
Tel: 705-722-6278

**SIMCOE COUNTY SERVICE CAMPUS - ORILLIA**

2 BORLAND STREET EAST, ORILLIA, ON

**LANDSCAPE PLAN DETAILS**

SCALE:	DATE:	DESIGNED BY:	REVIEWED BY:
1:500	October 7, 2020	SJT	NB
CITY FILE No.	OUR FILE REF. #	DRAWN BY:	LP-3
	24-20	SJT	