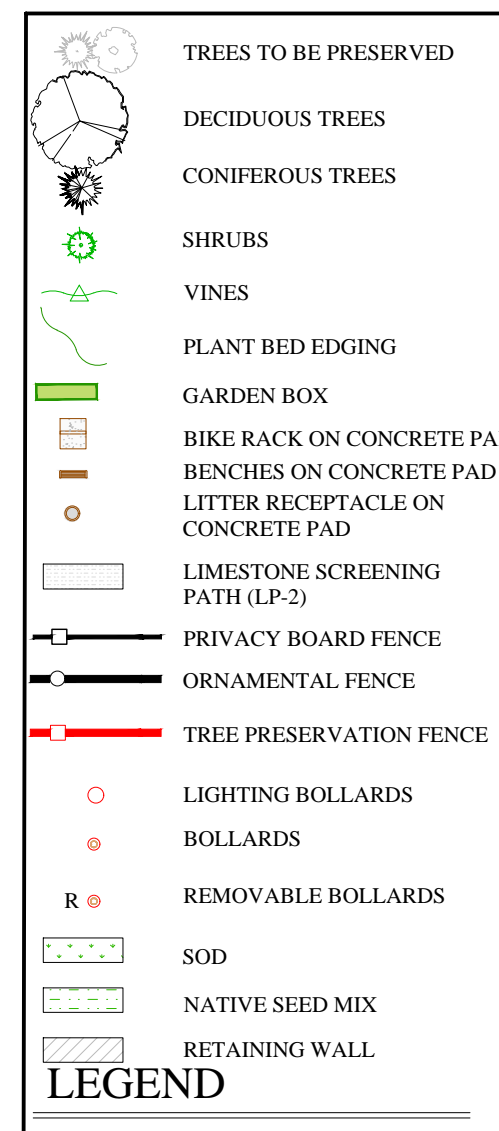


NOTE: PROPOSED TREES ARE SHOWN AT 50% CANOPY SPREAD.
SHRUBS ARE SHOWN AT THE MATURITY SPREAD

LANDSCAPING PLAN



CODE	QNTY	COMMON NAME	BOTANICAL NAME	SIZE	FORM	SPACING	DETAIL	NOTES
------	------	-------------	----------------	------	------	---------	--------	-------

CONIFEROUS TREES

Ab	10	BALSAM FIR	Abies balsamea	200cm	w.b.	6m o/c	D-2	Full form / Do not cut leader
Cnp	3	WEeping FALSE CYPRESS	Chamaecyparis nootkatensis 'Pendula'	200cm	w.b.	As Per Drawing	D-2	Full form / Do not cut leader
PpG	9	COLORADO BLUE SPRUCE	Picea pungens 'Glauca'	200cm	w.b.	As Per Drawing	D-2	Full form / Do not cut leader
Po	10	SERBIAN SPRUCE	Picea omorika	200cm	w.b.	As Per Drawing	D-2	Full form / Do not cut leader

DECIDUOUS TREES

AcB	8	BAUMAN HORSECHESTNUT	Aesculus hippocastanus Baumannii'	50 mm	w.b.	as shown	D-1	Full Form/sterile double flowers
Af	7	ARMSTRONG MAPLE	Acer x freemianii 'Armstrong'	50 mm	W.B.	7.0 m o/c	D-1	Full Form
Ag	3	PAPERBARK MAPLE	Acer griseum	50 mm	W.B.	6.0 m o/c	D-1	Full Form
MsP	15	SHADEMASTER HONEYLOCUST	Gleditsia triacanthos var. inermis 'Shademaster'	50 mm	W.B.	9.0 m o/c	D-1	Full Form
GxP	7	RED SPLENDOR CRABAPPLE	Malus 'Red Splendor'	50 mm	W.B.	7.0 m o/c	D-1	Full Form
PcR	7	CHANTICLEER ORNAMENTAL PEAR	Pyrus calleryana 'Chanticleer'	50 mm	W.B.	5.0 m o/c	D-1	Full Form
Qc	14	SCARLET OAK	Quercus coccinea	50 mm	W.B.	9.0 m o/c	D-1	Full Form/Acidic soil
Qr	1	RED OAK	Quercus rubra	50 mm	W.B.	9.0 m o/c	D-1	Spring planting/ Soil pH<7.5
Sa	1	EUROPEAN MOUNTAIN ASH	Sorbus aucuparia	50 mm	W.B.	6.0 m o/c	D-1	Full Form
SyR	6	IVORY SILK TREE LILAC	Syringa reticulata 'Ivory Silk'	50 mm	W.B.	6.0 m o/c	D-1	Full Form
TsS	5	STERLING SILVER LINDEN	Tilia tomentosa 'Sterling Silver'	50 mm	W.B.	9.0 m o/c	D-1	Full Form

STANDARD TREES

Hyst	2	PEEGEE HYDRANGEA (standard)	Hydrangea paniculata 'Grandiflora'	150 cm stem	7 gal	As Per Drawing	D-3	Tree form / Container grown
SyMst	3	MISS KIM LILAC (standard)	Syringa patula 'Miss Kim'	150 cm stem	7 gal	As Per Drawing	D-3	Tree form / Container grown

BROADLEAF EVERGREENS

Im	22	BLUE PRINCE HOLLY	Ilex x meserveae 'Blue Prince'	40 cm	2 gal.	0.80 m o/c	D-3	Full form / Container grown
Rh	39	HAAGA RHODODENDRON	Rhododendron x marjatta 'Haaga'	40 cm	2 gal.	1.30 m o/c	D-3	Full form / Container grown

SPREADING EVERGREENS

JhB	2	BLUE CHIP JUNIPER	Juniperus horizontalis 'Blue Chip'	40 cm	2 gal	0.90 m o/c	D-3	Full form / Container grown
JhW	103	BLUE RUG JUNIPER	Juniperus horizontalis 'Wiltoni'	40 cm	2 gal.	0.90 m o/c	D-3	Full form / Container grown
JsM	20	MOFFETT JUNIPER	Juniperus scopulorum 'Moffettii'	150 cm	w.b.	0.90 m o/c	D-3	Full form / Container grown
TmB	219	BROWN'S YEW	Taxus x media 'Brownii'	40 cm	2 gal	1.0m o/c	D-3	Full form / Container grown

PLANT LIST

REFER TO PLANTING NOTES AND DETAILS ON LP-2

DECIDUOUS SHRUBS

Bt	31	ROSE GLOW BARBERRY	Berberis thunbergii 'Rose Glow'	40 cm	2 gal	0.80 m o/c	D-3	Full form / Container grown
CaE	19	SILVER EDGE DOGWOOD	Cornus alba 'Elegantissima'	40 cm	2 gal	1.10m o/c	D-3	Full form / Container grown
EaC	15	DWARF WINGED BURNING BUSH	Euonymus alatus 'Compactus'	40 cm	2 gal.	1.60 m o/c	D-3	Full form / Container grown
Hy	2	TWIST-N-SHOUT HYDRANGEA	Hydrangea macrophylla 'Twist-n-Shout'	40 cm	2 gal	1.2m o/c	D-3	Full form / Container grown
Kj	58	DOUBLE FLOWRED KERRIA	Kerria japonica 'Pleniflora'	40 cm	2 gal	1.6m o/c	D-3	Full form / Container grown
Myp	39	BAYBERRY	Myrica pensylvanica	40 cm	2 gal	1.75m o/c	D-3	Full form / Container grown
Pc	43	PURPLE LEAF SAND CHERRY	Prunus x cistena	40 cm	2 gal	0.90m o/c	D-3	Full form / Container grown
Pf	6	PINK BEAUTY POTENTILLA	Potentilla fruticosa 'Pink Beauty'	40 cm	2 gal	0.60m o/c	D-3	Full form / Container grown
PRU	115	MANGO TANGO POTENTILLA	Potentilla fruticosa 'Uman'	40 cm	2 gal	0.60m o/c	D-3	Full form / Container grown
Rht	6	TIGER EYES CUTLEAF SUMAC	Rhus typhina 'Tiger Eyes'	40 cm	2 gal	2.0m o/c	D-3	Full form / Container grown
Rr	7	NEARLY WILD ROSE	Rosa rugosa 'Nearly Wild'	50 cm	2 gal	0.90m o/c	D-3	Full form / Container grown
Sv	18	RENAISSANCE SPIRAEA	Spiraea x vanhouttei 'Renaissance'	40 cm	2 gal	As Per Drawing	D-3	Full form / Container grown
SyM	69	MISS KIM LILAC	Syringa patula 'Miss Kim'	40 cm	2 gal	1.0m o/c	D-3	Full form / Container grown
WVf	6	MY MONET WEIGELA	Weigela florida 'My Monet' (Verweig)	40 cm	2 gal	0.6m o/c	D-3	Full form / Container grown

GROUND COVER

Aub	25	ROCK CRESS	Aubrieta cultorum 'Cascade Blue'	9cm	pot	0.6 m o/c	n/a	Full form / Container grown
IbS	12	CANDYTUFT	Iberis sempervirens 'Snowflake'	9cm	1 gal	0.4 m o/c	n/a	Full form / Container grown
Phs	24	MOSS PHLOX	Phlox subulata 'Emerald Pink'	18 cm	pan	0.45 m o/c	n/a	Full form / Container grown

ORNAMENTAL GRASSES

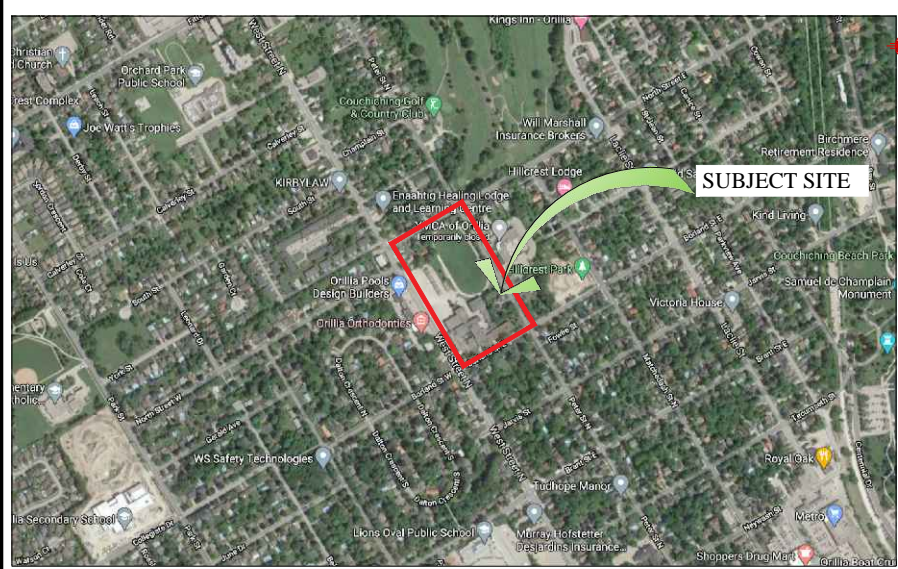
CaK	36	KARL FOERSTER FEATHER REED GRASS	Calamagrostis arundinacea 'Karl Foerster'	1 gal	pot	0.60 m o/c	n/a	Full form / Container grown
Fg	38	ELIJAH'S BLUE FESCUE	Festuca glauca 'Elijah Blue'	1 gal	pot	0.30 m o/c	n/a	Full form / Container grown
Hs	6	SAPPHIRE FOUNTAIN BLUE OAT GRASS	Helictotrichon sempervirens 'Saphirsprudel'	1 gal	pot	0.60 m o/c	n/a	Full form / Container grown
MsM	3	MALEPARTUS MAIDEN GRASS	Miscanthus sinensis 'Malepartus'	1 gal	pot	0.60 m o/c	n/a	Full form / Container grown

PERENNIALS

Hem	63	STELLA D'ORO DAYLILY	Hemerocallis x 'Stella D'Oro'	1 gal	pot	0.60 m o/c	n/a	Full form / Container grown
-----	----	----------------------	-------------------------------	-------	-----	------------	-----	-----------------------------

VINES

Hap	10	CLIMBING HYDRANGEA	Hydrangea anomala petiolaris	40 cm	2 gal	as shown	D-3	Full form / Container grown
-----	----	--------------------	------------------------------	-------	-------	----------	-----	-----------------------------



KEY MAP

N.T.S.

GENERAL NOTES

CONTRACTOR IS RESPONSIBLE FOR ALL LOCATES INCLUDING ALL UNDERGROUND SERVICES PRIOR TO ANY EXCAVATION OR INSTALLATIONS. THE CONTRACTOR IS REQUIRED TO NOTIFY THE VARIOUS UTILITY COMPANIES 48 HOURS PRIOR TO THE COMMENCEMENT OF ANY WORK.

ANY ACCOMPANYING DOCUMENTATION RELATING TO THE LANDSCAPE PLAN AND/OR PRESERVATION PLAN SUCH AS TENDER DOCUMENTS AND CHANGE NOTICES ARE TO BE ENDORSED BY J.D.B. ASSOCIATES LIMITED PRIOR TO THE BEGINNING OF ANY SITE WORKS. IN THE EVENT THAT OF A DISCREPANCY THE DRAWING SHALL BE ASSUMED CORRECT.

IT IS THE RESPONSIBILITY OF THE PERSON OR PERSONS RESPONSIBLE FOR THE CONSTRUCTED WORKS TO NOTIFY THE LANDSCAPE ARCHITECT WHEN PREPARED FOR ANY REQUIRED INSPECTIONS AND SIGN OFFS.

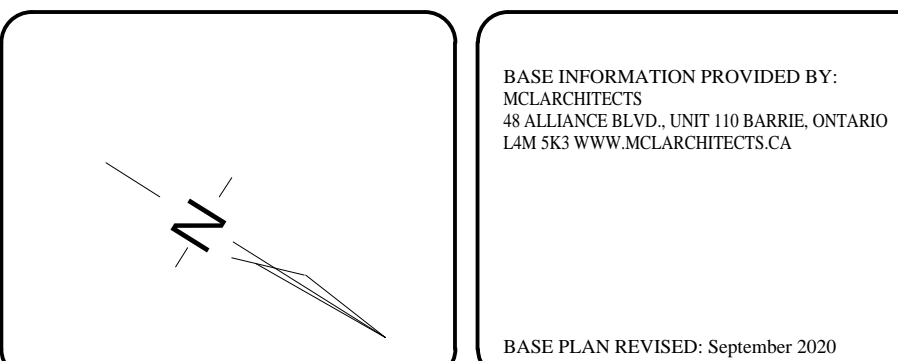
SCHEDULED MEETINGS SHALL TAKE PLACE AT THE CLOSEST MUTUALLY CONVENIENT TIME.

No.	REVISION	DATE	APRVD.
1.	SUBMITTED FOR SPA	November 13, 2020	SJT
2.	AS PER CITY COMMENTS	January 29, 2021	SJT
3.	SUBMITTED FOR SPA	April 28, 2021	SJT

ALL DRAWINGS AND SPECIFICATIONS ARE INSTRUMENTS OF SERVICE AND ARE THE PROPERTY OF J. D. B. ASSOCIATES LIMITED. DRAWINGS ARE NOT TO BE MODIFIED AND/OR REPRODUCED WITHOUT THE WRITTEN CONSENT OF J.D.B. ASSOCIATES LIMITED. REPRODUCTION OF DRAWINGS IN ANY FORM WITHOUT THE CONSENT OF J.D.B. ASSOCIATES LIMITED VOIDS THE DRAWING AT WHICH TIME J.D.B. ASSOCIATES LIMITED ACCEPTS NO LIABILITY FOR THE DRAWING CONTENT OR WORKS RESULTING FROM SAID REPRODUCTION. DRAWINGS MAY BE REPRODUCED BY MUNICIPAL AND GOVERNMENT AGENCIES RESPONSIBLE FOR APPROVALS FOR THEIR OWN USE. J. D. B. ASSOCIATES RESERVES THE RIGHT TO WITHDRAW ANY DRAWING(S) FROM GOVERNMENT OR MUNICIPAL AGENCIES WHETHER APPROVED OR NOT IN THE EVENT THAT ACCOUNTS ARE NOT SETTLED OR REMAIN OUTSTANDING.

IT IS THE RESPONSIBILITY OF THE CONTRACTOR TO VERIFY ALL DIMENSIONS ON THE SITE AND REPORT ANY DISCREPANCIES OR VARIATIONS FROM THE SUPPLIED INFORMATION TO THE LANDSCAPE ARCHITECT WITH THE PROJECT. J. D. B. ASSOCIATES LIMITED IS NOT RESPONSIBLE FOR THE ACCURACY OF SURVEY, ARCHITECTURAL, MECHANICAL, ENGINEERING OR ELECTRICAL INFORMATION SHOWN ON THE DRAWING. FOR FURTHER INFORMATION REFER TO APPROPRIATE SURVEY, ARCHITECTURAL, MECHANICAL, ENGINEERING OR ELECTRICAL DRAWINGS PRIOR TO PROCEEDING WITH ANY WORKS.

THIS DRAWING IS NOT TO BE SCALED.



BASE INFORMATION PROVIDED BY:
McLARCHITECTS
48 ALLIANCE BLVD. UNIT 108 BARRIE, ONTARIO
L4M 5K3 WWW.MCLARCHITECTS.CA

BASE PLAN REVISED: September 2020



JDB ASSOCIATES LTD.

Urban Designers
Landscape Architects
Arborists

274 Burton Ave., Suite 1201
Barrie, Ontario
L4N 5W4

Fax: 705-722-5660
Tel: 705-722-6278

SIMCOE COUNTY SERVICE CAMPUS - ORILLIA

2 BORLAND STREET EAST, ORILLIA, ON

LANDSCAPE PLANTING PLAN

SCALE: 1:500	DATE: October 7, 2020	DESIGNED BY: SJT	REVIEWED BY: NB
CITY FILE No.	OUR FILE REF. # 24-20	DRAWN BY: SJT	LP-2