

KEY MAP N.T.S.

**GENERAL NOTES**

CONTRACTOR IS RESPONSIBLE FOR ALL LOCATES INCLUDING ALL UNDERGROUND SERVICES PRIOR TO ANY EXCAVATION OR INSTALLATIONS. THE CONTRACTOR IS REQUIRED TO NOTIFY THE VARIOUS UTILITY COMPANIES 48 HOURS PRIOR TO THE COMMENCEMENT OF ANY WORK.

ANY ACCOMPANYING DOCUMENTATION RELATING TO THE LANDSCAPE PLAN AND/OR PRESERVATION PLAN SUCH AS TENDER DOCUMENTS AND CHANGE NOTICES ARE TO BE ENDORSED BY J.D.B. ASSOCIATES LIMITED PRIOR TO THE BEGINNING OF ANY SITE WORKS. IN THE EVENT THAT OF A DISCREPANCY THE DRAWING SHALL BE ASSUMED CORRECT.

IT IS THE RESPONSIBILITY OF THE PERSON OR PERSONS RESPONSIBLE FOR THE CONSTRUCTED WORKS TO NOTIFY THE LANDSCAPE ARCHITECT WHEN PREPARED FOR ANY REQUIRED INSPECTIONS AND SIGN OFFS.

SCHEDULED MEETINGS SHALL TAKE PLACE AT THE CLOSEST MUTUALLY CONVENIENT TIME.

| No. | REVISION                       | DATE              | APRVD. |
|-----|--------------------------------|-------------------|--------|
| 1.  | SUBMITTED FOR SPA              | November 13, 2020 | SJT    |
| 2.  | AS PER CITY COMMENTS           | January 29, 2021  | SJT    |
| 3.  | SUBMITTED FOR SPA              | April 28, 2021    | SJT    |
| 4.  | REVISED TREE PRESERVATION PLAN | August 11, 2021   | SJT    |

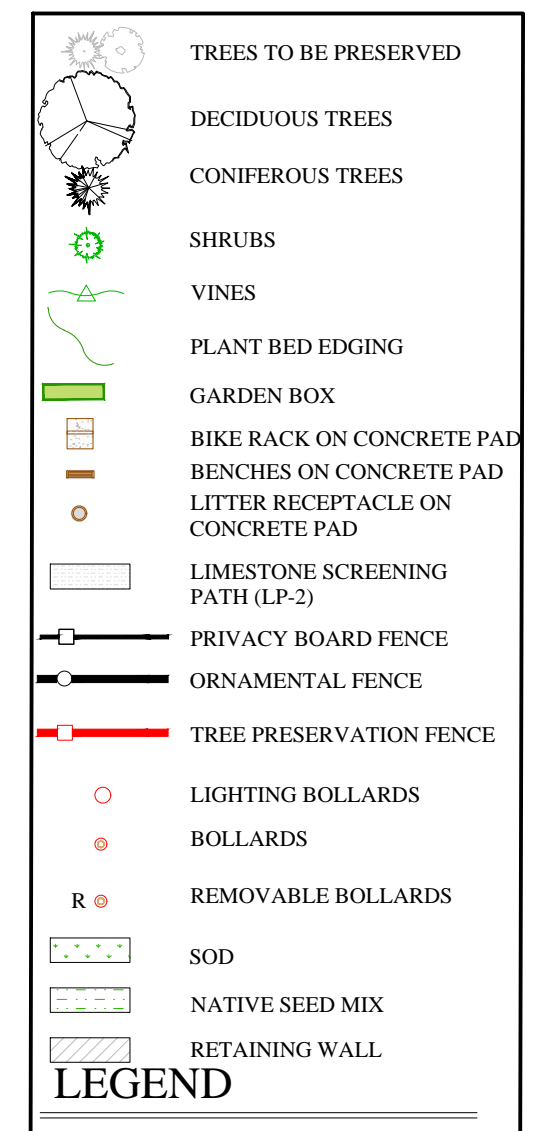
ALL DRAWINGS AND SPECIFICATIONS ARE INSTRUMENTS OF SERVICE AND ARE THE PROPERTY OF J. D. B. ASSOCIATES LIMITED. DRAWINGS ARE NOT TO BE MODIFIED AND/OR REPRODUCED WITHOUT THE WRITTEN CONSENT OF J.D.B. ASSOCIATES LIMITED. REPRODUCTION OF DRAWINGS IN ANY FORM WITHOUT THE CONSENT OF J.D.B. ASSOCIATES LIMITED VOIDS THE DRAWING AT WHICH TIME J.D.B. ASSOCIATES LIMITED ACCEPTS NO LIABILITY FOR THE DRAWING CONTENT OR WORKS RESULTING FROM SAID REPRODUCTION. DRAWINGS MAY BE REPRODUCED BY MUNICIPAL AND GOVERNMENT AGENCIES RESPONSIBLE FOR APPROVALS FOR THEIR OWN USE. J. D. B. ASSOCIATES RESERVES THE RIGHT TO WITHDRAW ANY DRAWING(S) FROM GOVERNMENT OR MUNICIPAL AGENCIES WHETHER APPROVED OR NOT IN THE EVENT THAT ACCOUNTS ARE NOT SETTLED OR REMAIN OUTSTANDING.

IT IS THE RESPONSIBILITY OF THE CONTRACTOR TO VERIFY ALL DIMENSIONS ON THE SITE AND REPORT ANY DISCREPANCIES OR VARIATIONS FROM THE SUPPLIED INFORMATION TO THE LANDSCAPE ARCHITECT WITH THE PROJECT. J. D. B. ASSOCIATES LIMITED IS NOT RESPONSIBLE FOR THE ACCURACY OF SURVEY, ARCHITECTURAL, MECHANICAL, ENGINEERING OR ELECTRICAL INFORMATION SHOWN ON THE DRAWING. FOR FURTHER INFORMATION REFER TO APPROPRIATE SURVEY, ARCHITECTURAL, MECHANICAL, ENGINEERING OR ELECTRICAL DRAWINGS PRIOR TO PROCEEDING WITH ANY WORKS.

THIS DRAWING IS NOT TO BE SCALED.

NOTE: PROPOSED TREES ARE SHOWN AT 50% CANOPY SPREAD. SHRUBS ARE SHOWN AT THE MATURITY SPREAD

**LANDSCAPING PLAN**



| CODE                        | QNTY | COMMON NAME                 | BOTANICAL NAME                                   | SIZE        | FORM   | SPACING        | DETAIL | NOTES                            |
|-----------------------------|------|-----------------------------|--|-------------|--------|----------------|--------|----------------------------------|
| <b>CONIFEROUS TREES</b>     |      |                             |  |             |        |                |        |                                  |
| Ab                          | 10   | BALSAM FIR                  | Abies balsamea                                   | 200cm       | w.b.   | 6m o/c         | D-2    | Full form / Do not cut leader    |
| Cnp                         | 3    | WEeping FALSE CYPRESS       | Chamaecyparis nootkatensis 'Pendula'             | 200cm       | w.b.   | As Per Drawing | D-2    | Full form / Do not cut leader    |
| PpG                         | 9    | COLORADO BLUE SPRUCE        | Picea pungens 'Glauca'                           | 200cm       | w.b.   | As Per Drawing | D-2    | Full form / Do not cut leader    |
| Po                          | 9    | SERBIAN SPRUCE              | Picea omorika                                    | 200cm       | w.b.   | As Per Drawing | D-2    | Full form / Do not cut leader    |
| <b>DECIDUOUS TREES</b>      |      |                             |  |             |        |                |        |                                  |
| AeB                         | 8    | BAUMAN HORSECHESTNUT        | Aesculus hippocastanum 'Baumannii'               | 50 mm       | w.b.   | as shown       | D-1    | Full Form/sterile double flowers |
| Af                          | 7    | ARMSTRONG MAPLE             | Acer x freemanii 'Armstrong'                     | 50 mm       | W.B.   | 7.0 m o/c      | D-1    | Full Form                        |
| Ag                          | 3    | PAPERBARK MAPLE             | Acer griseum                                     | 50 mm       | W.B.   | 6.0 m o/c      | D-1    | Full Form                        |
| Gs                          | 15   | SHADEMASTER HONEYLOCUST     | Gleditsia triacanthos var. inermis 'Shademaster' | 50 mm       | W.B.   | 9.0 m o/c      | D-1    | Full Form                        |
| MxP                         | 7    | RED SPLENDOR CRABAPPLE      | Malus 'Red Splendor'                             | 50 mm       | W.B.   | 7.0 m o/c      | D-1    | Full Form                        |
| PxR                         | 7    | CHANTICLEER ORNAMENTAL PEAR | Pyrus calleryana 'Chanticleer'                   | 50 mm       | W.B.   | 5.0 m o/c      | D-1    | Full Form                        |
| Qc                          | 14   | SCARLET OAK                 | Quercus coccinea                                 | 50 mm       | W.B.   | 9.0 m o/c      | D-1    | Full Form/Acidic soil            |
| Qr                          | 1    | RED OAK                     | Quercus rubra                                    | 50 mm       | W.B.   | 9.0 m o/c      | D-1    | Spring planting/ Soil pH<7.5     |
| Sa                          | 1    | EUROPEAN MOUNTAIN ASH       | Sorbus aucuparia                                 | 50 mm       | W.B.   | 6.0 m o/c      | D-1    | Full Form                        |
| SyR                         | 6    | IVORY SILK TREE LILAC       | Syringa reticulata 'Ivory Silk'                  | 50 mm       | W.B.   | 6.0 m o/c      | D-1    | Full Form                        |
| TsS                         | 5    | STERLING SILVER LINDEN      | Tilia tomentosa 'Sterling Silver'                | 50 mm       | W.B.   | 9.0 m o/c      | D-1    | Full Form                        |
| <b>STANDARD TREES</b>       |      |                             |  |             |        |                |        |                                  |
| Hyst                        | 2    | PEEGEE HYDRANGEA (standard) | Hydrangea paniculata 'Grandiflora'               | 150 cm stem | 7 gal  | As Per Drawing | D-3    | Tree form / Container grown      |
| SyMst                       | 3    | MISS KIM LILAC (standard)   | Syringa patula 'Miss Kim'                        | 150 cm stem | 7 gal  | As Per Drawing | D-3    | Tree form / Container grown      |
| <b>BROADLEAF EVERGREENS</b> |      |                             |  |             |        |                |        |                                  |
| Im                          | 22   | BLUE PRINCE HOLLY           | Ilex x meserveae 'Blue Prince'                   | 40 cm       | 2 gal. | 0.80 m o/c     | D-3    | Full form / Container grown      |
| Rh                          | 39   | HAAGA RHODODENDRON          | Rhododendron x marjatta 'Haaga'                  | 40 cm       | 2 gal. | 1.30 m o/c     | D-3    | Full form / Container grown      |
| <b>SPREADING EVERGREENS</b> |      |                             |  |             |        |                |        |                                  |
| JhB                         | 2    | BLUE CHIP JUNIPER           | Juniperus horizontalis 'Blue Chip'               | 40 cm       | 2 gal  | 0.90 m o/c     | D-3    | Full form / Container grown      |
| JhW                         | 103  | BLUE RUG JUNIPER            | Juniperus horizontalis 'Wiltoni'                 | 40 cm       | 2 gal. | 0.90 m o/c     | D-3    | Full form / Container grown      |
| JmM                         | 20   | MOFFETT JUNIPER             | Juniperus scopulorum 'Moffettii'                 | 150 cm      | w.b.   | 0.90 m o/c     | D-3    | Full form / Container grown      |
| TmB                         | 219  | BROWN 'S YEW                | Taxus x media 'Brownii'                          | 40 cm       | 2 gal  | 1.0m o/c       | D-3    | Full form / Container grown      |

**DECIDUOUS SHRUBS**

|     |     |                           |                                       |       |        |                |     |                             |
|-----|-----|---------------------------|---------------------------------------|-------|--------|----------------|-----|-----------------------------|
| Bt  | 31  | ROSE GLOW BARBERRY        | Berberis thunbergii 'Rose Glow'       | 40 cm | 2 gal  | 0.80 m o/c     | D-3 | Full form / Container grown |
| CaE | 19  | SILVER EDGE DOGWOOD       | Cornus alba 'Elegantissima'           | 40 cm | 2 gal  | 1.10m o/c      | D-3 | Full form / Container grown |
| EaC | 15  | DWARF WINGED BURNING BUSH | Euonymus alatus 'Compactus'           | 40 cm | 2 gal. | 1.60 m o/c     | D-3 | Full form / Container grown |
| Hy  | 2   | TWIST-N-SHOUT HYDRANGEA   | Hydrangea macrophylla 'Twist-n-Shout' | 40 cm | 2 gal  | 1.2m o/c       | D-3 | Full form / Container grown |
| Kj  | 58  | DOUBLE FLOWED KERRIA      | Kerria japonica 'Pleiniflora'         | 40 cm | 2 gal  | 1.6m o/c       | D-3 | Full form / Container grown |
| Myp | 39  | BAYBERRY                  | Myrica pensylvanica                   | 40 cm | 2 gal  | 1.75m o/c      | D-3 | Full form / Container grown |
| Pc  | 43  | PURPLE LEAF SAND CHERRY   | Prunus x cistena                      | 40 cm | 2 gal  | 0.90m o/c      | D-3 | Full form / Container grown |
| Pf  | 6   | PINK BEAUTY POTENTILLA    | Potentilla fruticosa 'Pink Beauty'    | 40 cm | 2 gal  | 0.60m o/c      | D-3 | Full form / Container grown |
| PRU | 115 | MANGO TANGO POTENTILLA    | Potentilla fruticosa 'Uman'           | 40 cm | 2 gal  | 0.60m o/c      | D-3 | Full form / Container grown |
| Rht | 6   | TIGER EYES CUTLEAF SUMAC  | Rhus typhina 'Tiger Eyes'             | 40 cm | 2 gal  | 2.0m o/c       | D-3 | Full form / Container grown |
| Rr  | 7   | NEARLY WILD ROSE          | Rosa rugosa 'Nearly Wild'             | 50 cm | 2 gal  | 0.90m o/c      | D-3 | Full form / Container grown |
| Sv  | 18  | RENAISSANCE SPIRAEA       | Spiraea x vanhouttei 'Renaissance'    | 40 cm | 2 gal  | As Per Drawing | D-3 | Full form / Container grown |
| SyM | 69  | MISS KIM LILAC            | Syringa patula 'Miss Kim'             | 40 cm | 2 gal  | 1.0m o/c       | D-3 | Full form / Container grown |
| WVf | 6   | MY MONET WEIGELA          | Weigela florida 'My Monet' (Verweig)  | 40 cm | 2 gal  | 0.6m o/c       | D-3 | Full form / Container grown |

**GROUND COVER**

|     |    |            |                                  |       |       |            |     |                             |
|-----|----|------------|----------------------------------|-------|-------|------------|-----|-----------------------------|
| Aub | 25 | ROCK CRESS | Aubrieta cultorum 'Cascade Blue' | 9cm   | pot   | 0.6 m o/c  | n/a | Full form / Container grown |
| IbS | 12 | CANDYTUFT  | Iberis sempervirens 'Snowflake'  | 9cm   | 1 gal | 0.4 m o/c  | n/a | Full form / Container grown |
| Phs | 24 | MOSS PHLOX | Phlox subulata 'Emerald Pink'    | 18 cm | pan   | 0.45 m o/c | n/a | Full form / Container grown |

**ORNAMENTAL GRASSES**

|     |    |                                  |   |       |     |            |     |                             |
|-----|----|----------------------------------|---|-------|-----|------------|-----|-----------------------------|
| CaK | 36 | KARL FOERSTER FEATHER REED GRASS | Calamagrostis arundinacea 'Karl Foerster'   | 1 gal | pot | 0.60 m o/c | n/a | Full form / Container grown |
| Fg  | 38 | ELIJAH'S BLUE FESCUE             | Festuca glauca 'Elijah Blue'                | 1 gal | pot | 0.30 m o/c | n/a | Full form / Container grown |
| Hs  | 6  | SAPPHIRE FOUNTAIN BLUE OAT GRASS | Helictotrichon sempervirens 'Saphirsprudel' | 1 gal | pot | 0.60 m o/c | n/a | Full form / Container grown |
| MxM | 3  | MALEPARTUS MAIDEN GRASS          | Miscanthus sinensis 'Malepartus'            | 1 gal | pot | 0.60 m o/c | n/a | Full form / Container grown |

**PERENNIALS**

|     |    |                      |                               |       |     |            |     |                             |
|-----|----|----------------------|-------------------------------|-------|-----|------------|-----|-----------------------------|
| Hem | 63 | STELLA D'ORO DAYLILY | Hemerocallis x 'Stella D'Oro' | 1 gal | pot | 0.60 m o/c | n/a | Full form / Container grown |
|-----|----|----------------------|-------------------------------|-------|-----|------------|-----|-----------------------------|

**VINES**

|     |    |                    |                              |       |       |          |     |                             |
|-----|----|--------------------|------------------------------|-------|-------|----------|-----|-----------------------------|
| Hap | 10 | CLIMBING HYDRANGEA | Hydrangea anomala petiolaris | 40 cm | 2 gal | as shown | D-3 | Full form / Container grown |
|-----|----|--------------------|------------------------------|-------|-------|----------|-----|-----------------------------|

BASE INFORMATION PROVIDED BY:  
MCLARCHITECTS  
48 ALLIANCE BLVD, UNIT 110 BARRIE, ONTARIO  
L4M 5K3 WWW.MCLARCHITECTS.CA

BASE PLAN REVISED: September 2020



**JDB ASSOCIATES LTD.**  
Urban Designers  
Landscape Architects  
Arborsitists

274 Burton Ave., Suite 1201  
Barrie, Ontario  
L4N 5W4

Fax: 705-722-5660  
Tel: 705-722-6278

**SIMCOE COUNTY SERVICE CAMPUS - ORILLIA**  
2 BORLAND STREET EAST, ORILLIA, ON

**LANDSCAPE PLANTING PLAN**

| SCALE:        | DATE:           | DESIGNED BY: | REVIEWED BY: |
|---------------|-----------------|--------------|--------------|
| 1:500         | October 7, 2020 | SJT          | NB           |
| CITY FILE No. | OUR FILE REF. # | DRAWN BY:    |              |
|               | 24-20           | SJT          | LP-2         |